

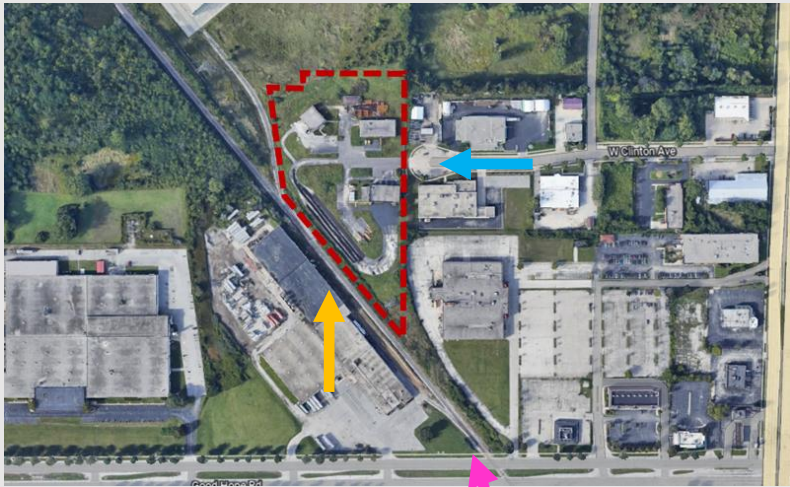
File No. 220878. A substitute ordinance relating to the change in zoning from Industrial Light, IL1, to a Detailed Planned Development known as Wisconsin DOC Juvenile Correctional Facility to allow the development of a juvenile correctional facility located at 7930 West Clinton Avenue, on the north side of West Good Hope Road, west of North 76th Street, in the 9th Aldermanic District.



File No. 220878. Site context.



Aerial view looking north



View from Good Hope Rd looking north



View from W Clinton Ave



Citywide Policy Plan

- “[P]reserve, enhance, and incorporate educational facilities, institutional uses, and services as key neighborhood elements and centers of public activities”
- “[C]onsider reusing underutilized institutional or industrial facilities for new institutional, civic, or other neighborhood-compatible uses or services...” (p. 50)
- “[P]romote community facilities that offer the best quality care to residents.” (p. 164)



Northwest Side Area Plan

- Promotes walking within commercial development areas along 76th St.
- Landscape buffers are encouraged
- Calls for viewing industrial areas as employment centers

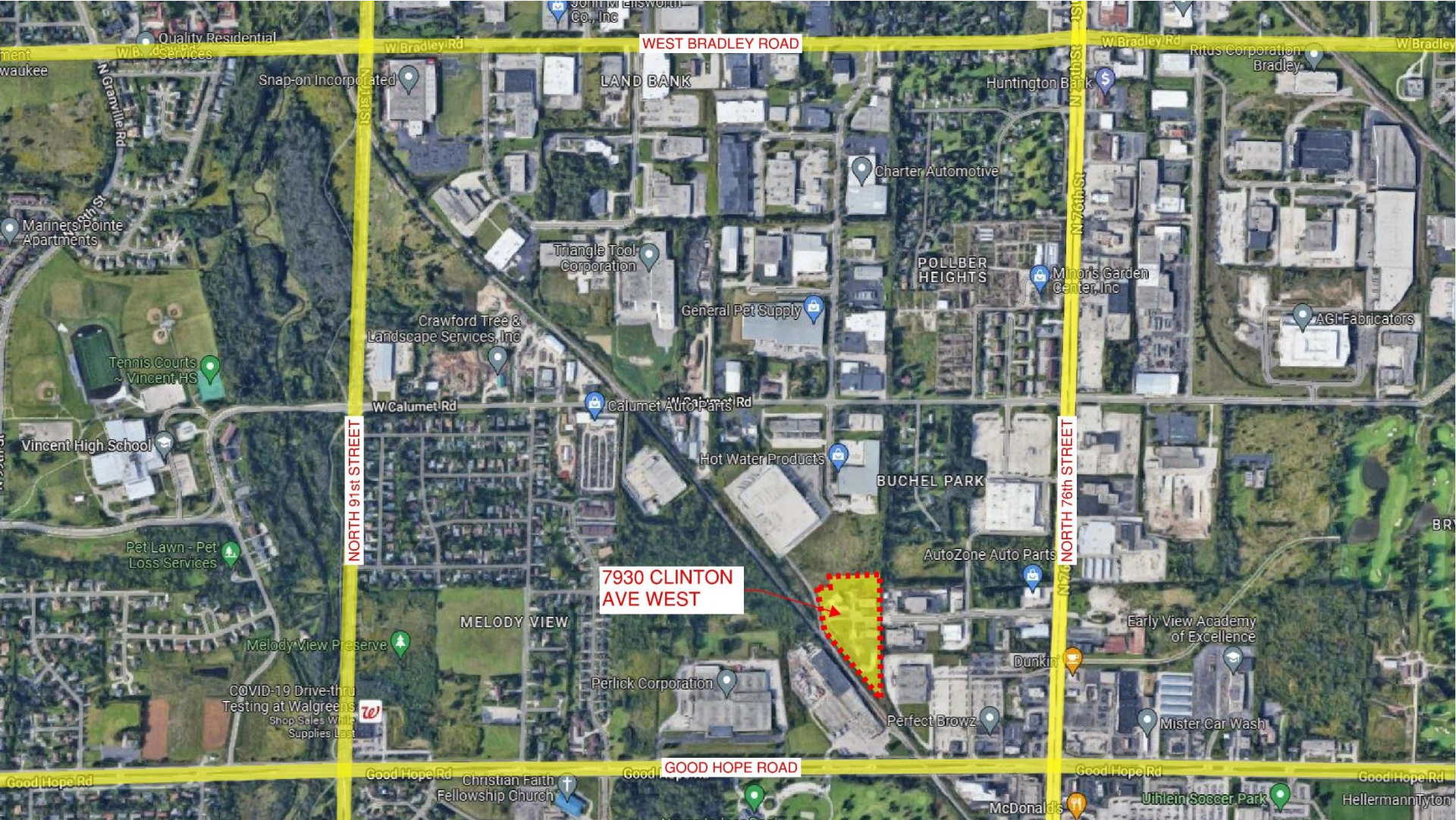
This proposed use, being situated into an existing industrial park with limited visibility by surrounding uses and designed to mitigate potential land use conflicts with adjacent uses, yet with strong vehicular and transit connections from 76th Street and Good Hope Road, is not inconsistent with the Comprehensive Plan.



JUVENILE CORRECTIONAL FACILITY - MILWAUKEE



PROJECT OVERVIEW



SITE LOCATION

PROJECT OVERVIEW



VICINITY MAP



SITE ENTRANCE FROM CUL-DE-SAC ON CLINTON AVE

PROJECT OVERVIEW



FLOOR PLAN

PROJECT OVERVIEW



SITE PLAN



DESIGN APPROACH



AERIAL VIEW FROM SOUTHEAST

OUTDOOR RECREATION



AERIAL VIEW FROM NORTHWEST

PERIMETER SECURITY



AERIAL VIEW FROM NORTHEAST



LANDSCAPE PLAN

SITE PREPARATION

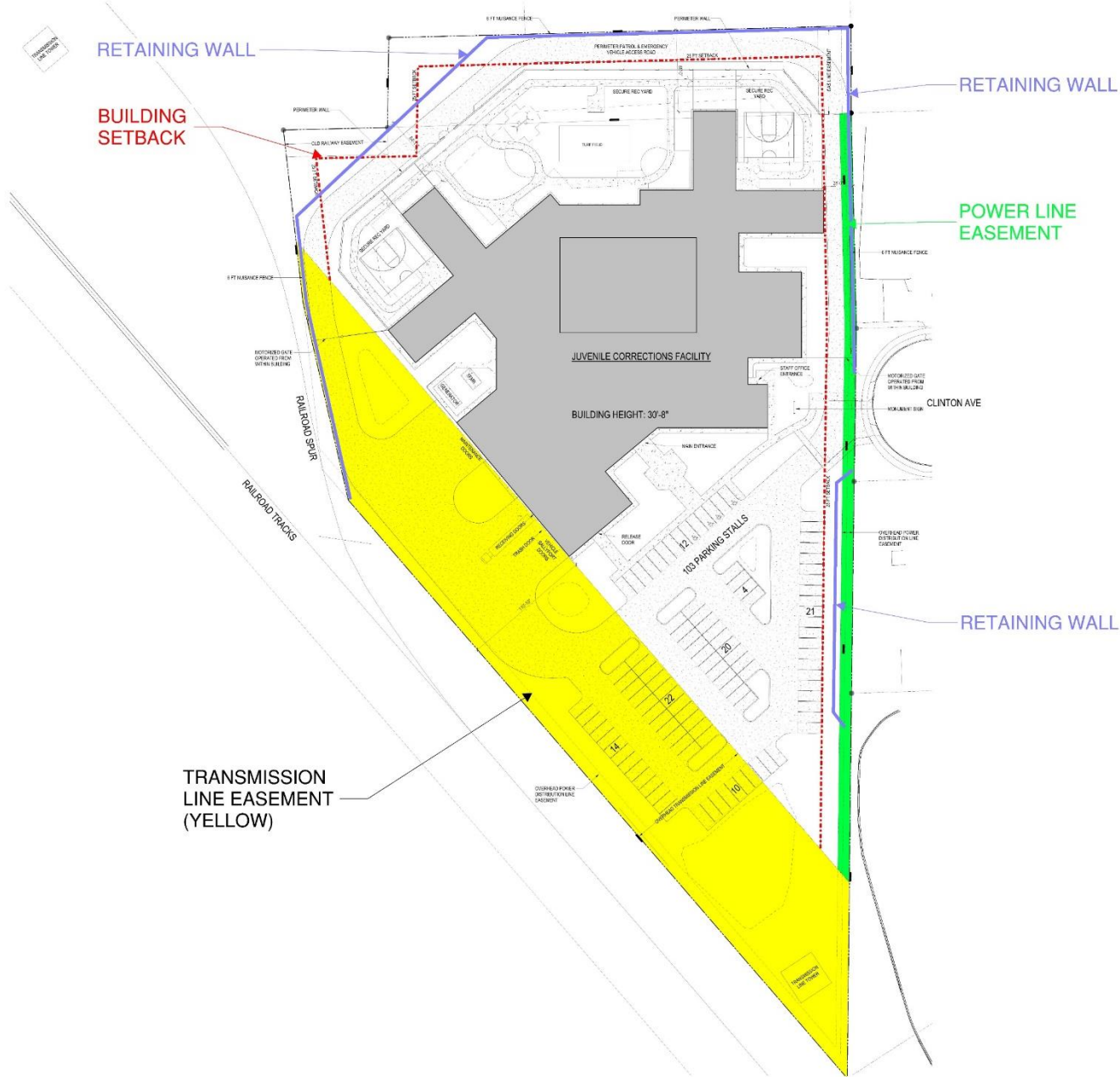


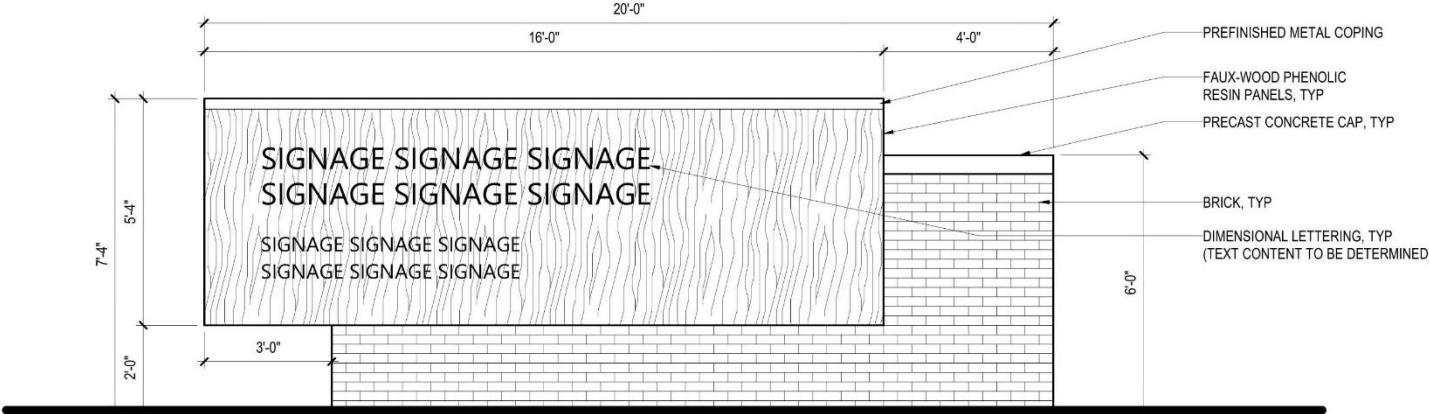
EXISTING BUILDINGS TO BE REMOVED

POWER TRANSMISSION LINE TOWER TO REMAIN

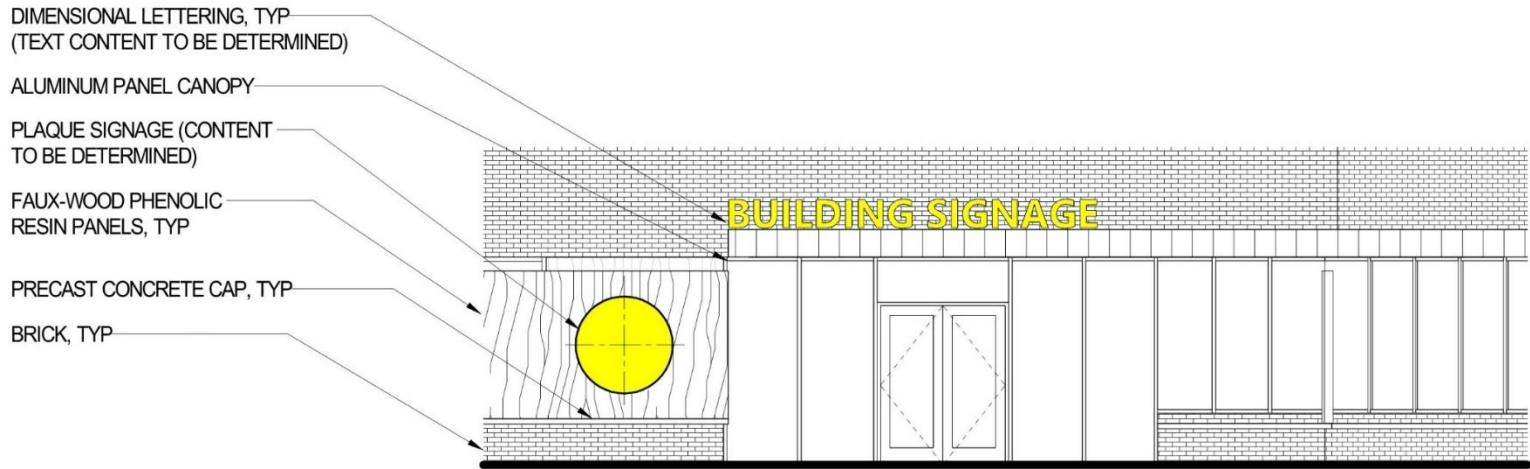
AERIAL OF EXISTING SITE FROM SOUTHWEST

SITE CONSTRAINTS





MONUMENT SIGN

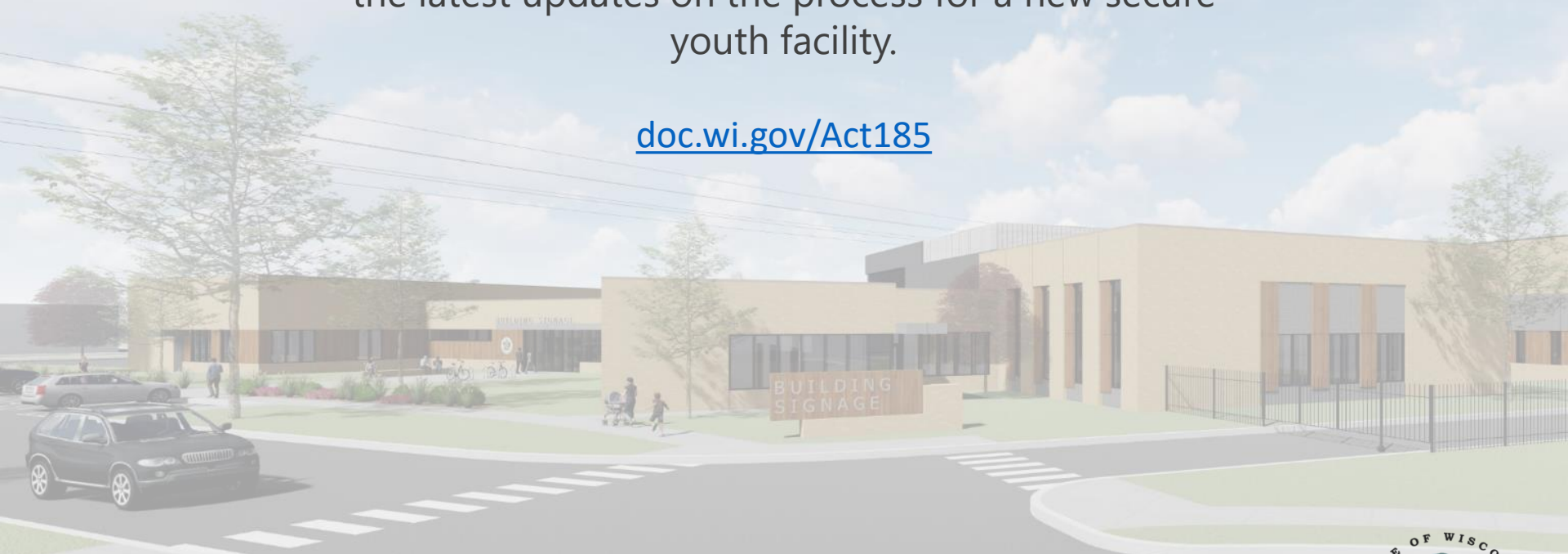


SIGNAGE AT MAIN BUILDING ENTRANCE

THANK YOU

Please visit the DOC website for more information and the latest updates on the process for a new secure youth facility.

doc.wi.gov/Act185



QUESTIONS & ANSWERS

