



Certificate of Appropriateness AMENDED

Milwaukee Historic Preservation Commission/200 E. Wells Street/Milwaukee, WI 53202/phone 414-286-5712/fax 414-286-3004

Property

500 N. WATER ST. East Side Commercial Historic District Button Block

Description of work

Due to revisions required by the National Park Service for this Historic Tax Credit project, the applicant is modifying the signage originally approved with a COA dated 08-22-2016 and later amended on 01-23-2017.

Sign locations previously identified will remain the same.

The signs currently proposed will be changed from internally illuminated to raised halo lit channel letters.

The new blade signs will be thinner and the length of some of the signs has been shortened.

Sign A measures 32'6" long by 3" 6" wide by 8" deep.

Sign B measures 26' long by 2'4" wide by 3" deep

Sign C measures 31 ' long by 1'8" wide by 3" deep

Sign D measures 9 ' long by 3' wide by 8" deep

Date issued

05-31-2017

PTS ID 104957 COA Amend Signage Dimensions

In accordance with the provisions of Section 320-21 (11) and (12) of the Milwaukee Code of Ordinances, the Milwaukee Historic Preservation Commission has issued a certificate of appropriateness for the work listed above. The work was found to be consistent with preservation guidelines. The following conditions apply to this certificate of appropriateness:

All signs will follow the designs and locations and dimensions submitted.

Care should be taken to install signs at mortar joints to the extent possible to avoid damaging the brick. Likewise, care should be taken to avoid the red sandstone and terra cotta trim as these are costly to replace if cracked or damaged in the installation.

All work must be done in a craftsman-like manner, and must be completed within one year of the date this certificate was issued. Staff must approve any changes or additions to this certificate before work begins. Work that is not completed in accordance with this certificate may be subject to correction orders or citations. If you require technical assistance, please contact Carlen Hatala of the Historic Preservation staff as follows: Phone: (414) 286-5722 Fax: (414) 286-3004 E-mail: carlen.hatala@milwaukee.gov.

If permits are required, you are responsible for obtaining them from the Milwaukee Development Center. If you have questions about permit requirements, please consult the Development Center's web site, www.milwaukee.gov/build, or call (414) 286-8210.

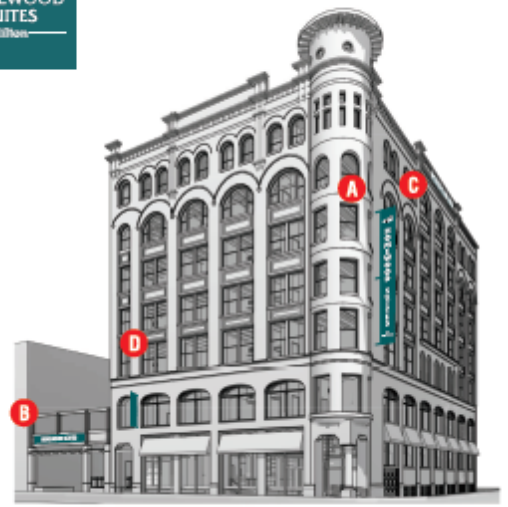


City of Milwaukee Historic Preservation Staff

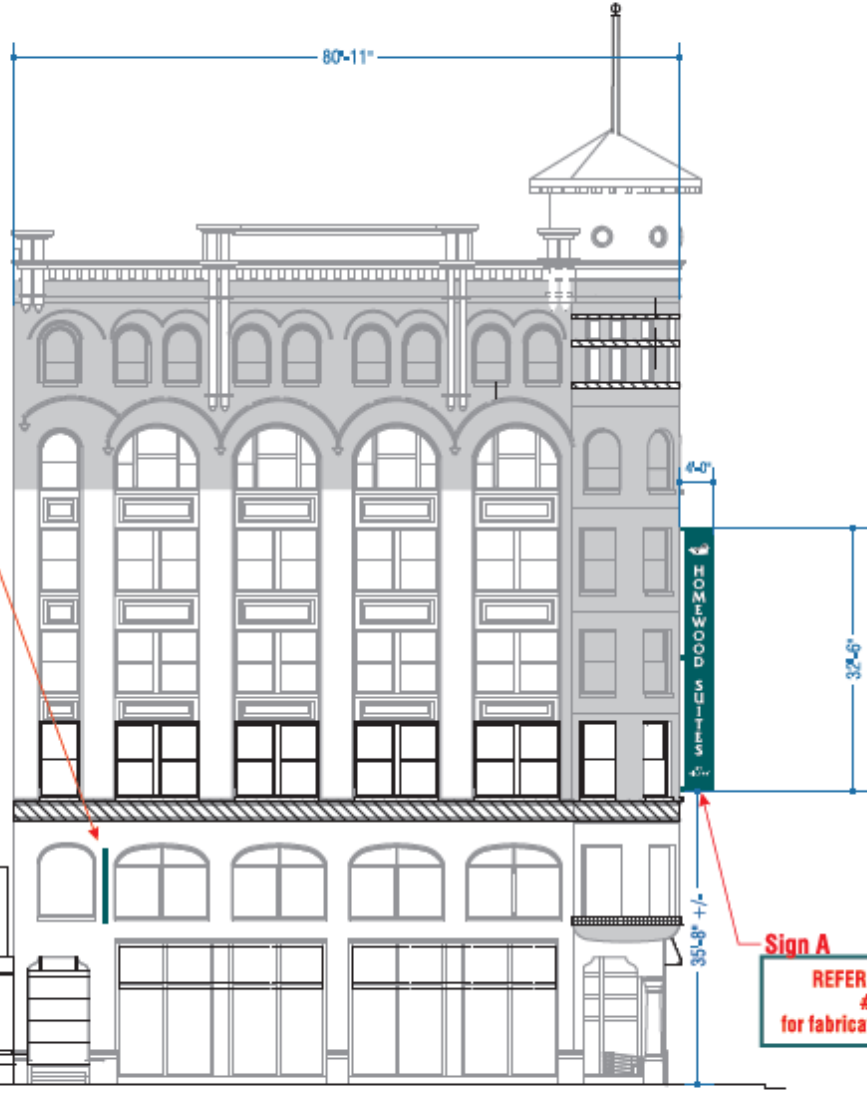
Copies to: Development Center, Ald. Robert Bauman, Contractor , Inspector John Cunningham (286-2538)



SITE IDENTIFICATION



VIEW FACING NORTHEAST



Sign D
REFERENCE DRAWING #B70977F
for fabrication & color details.

Sign A
REFERENCE DRAWING #B70977C
for fabrication & color details.

NOTE: PRELIMINARY ONLY!!
ADDITIONAL DETAILS REQUIRED FOR "DRIVE THRU" STRUCTURE PRIOR TO MFG!!

Sign B
REFERENCE DRAWING #B70977D
for fabrication & color details.

WEST ELEVATION

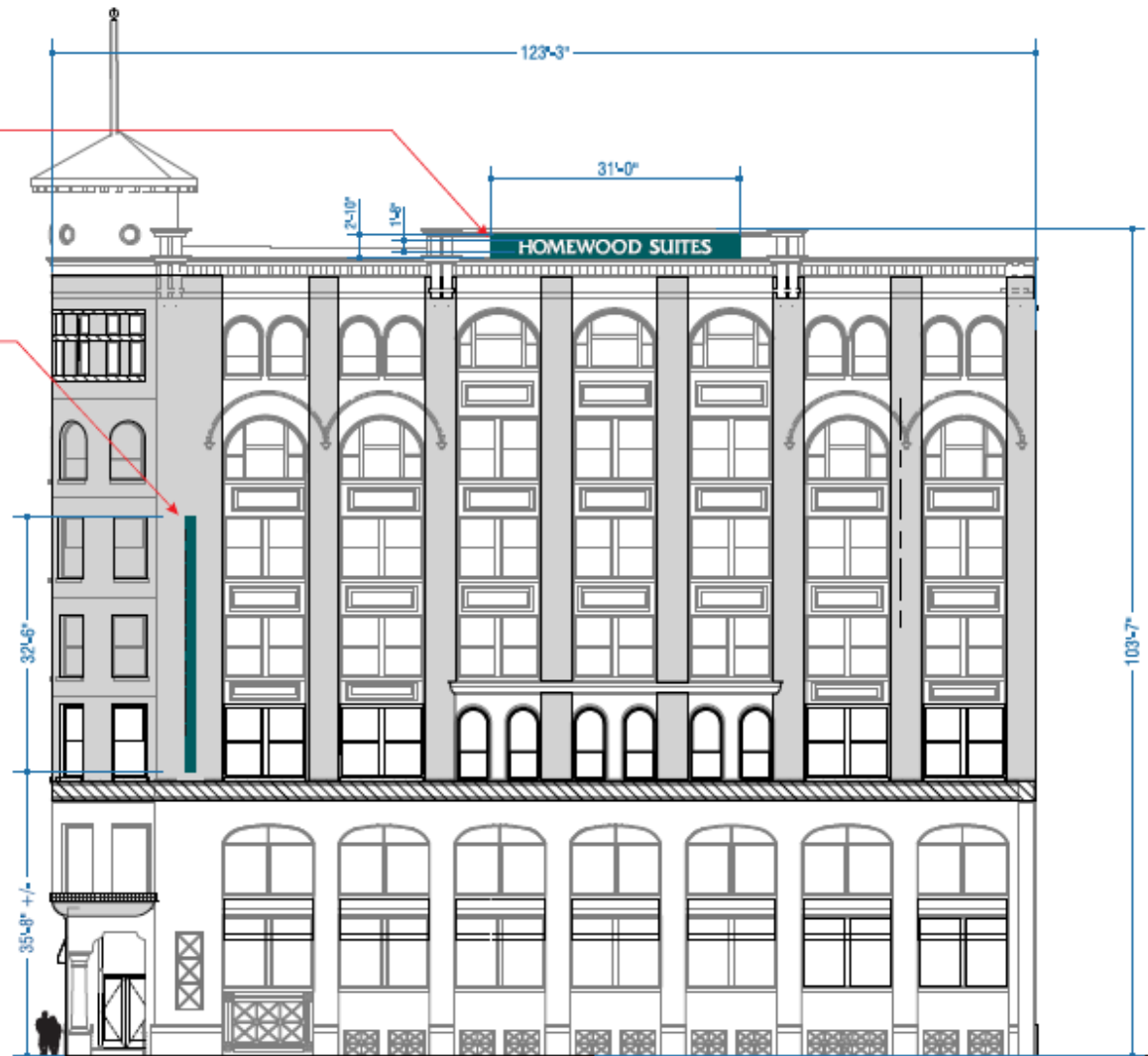
SCALE: 1/16" = 1'-0"



SITE IDENTIFICATION

Sign C
REFERENCE DRAWING
#B70977E
for fabrication & color details.

Sign A
REFERENCE DRAWING
#B70977C
for fabrication & color details.



SOUTH ELEVATION

SCALE: 1/16"=1'-0"

Milwaukee, WI



SITE IDENTIFICATION



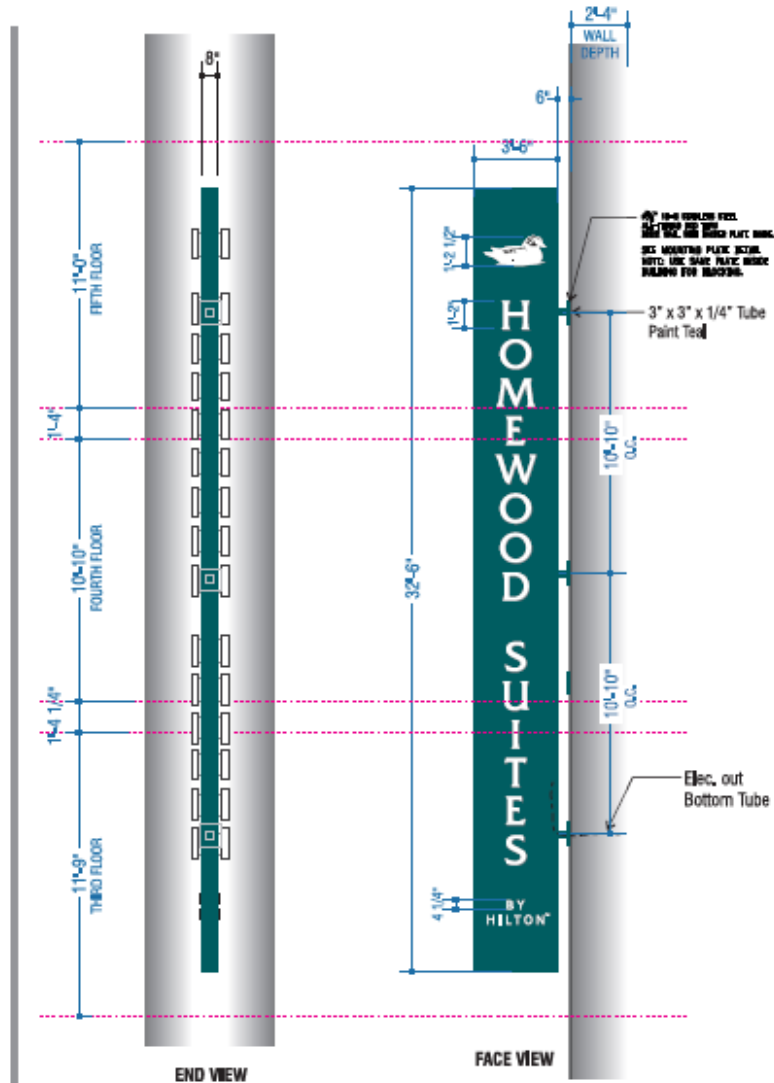
NORTH ELEVATION

SCALE: 1/16"=1'-0"

Milwaukee, WI

CUSTOM D/F Projecting Wall Sign
w/ Halo Lit Channel Letters

Sign A



D/F Projecting Wall Sign w/ Halo Lit Channel Letters

FABRICATED D/F SIGN CABINET, ALUMINUM FACE & FILLER.
PAINTED PMS 323C TEAL (SATIN FINISH).
NOTE: SIGN CABINET TO BE OF MINIMAL DEPTH

HOMWOOD SUITES:
3" Deep Rev. Channel Letters.
White faces & returns
White L.E.D. Halo Illumination

DUCK LOGO:
3" Deep Rev. Channel Letters.
White faces & returns
White L.E.D. Halo Illumination
BLACK VINYL DETAIL FIRST SURFACE

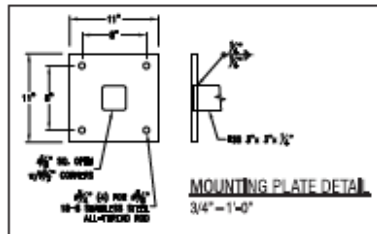
BY HILTON: 1/4" THICK FLAT CUT OUT ALUMINUM LETTERS (NON-ILLUM)
PAINT WHITE

TM: (NON-ILLUM) WHITE VINYL APPLIED TO SIGN FACE

COLOR SPECIFICATIONS

PAINT SPECIFICATIONS

- P1 PMS 323C TEAL (Satin Finish)
- P2 WHITE (Satin Finish)



3/16" = 1'-0"



NIGHT VIEW

Sign A



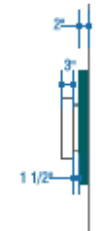
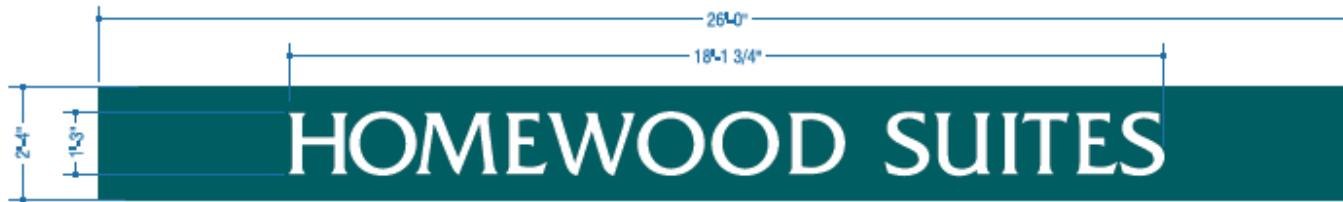
VIEW FACING NORTHEAST

Milwaukee, WI



Background Panel w/ Halo Illuminated Channel Letters

Sign B



PROFILE

Background Panel w/ Halo Illuminated Channel Letters

3/8" = 1'-0"

ALUMINUM SIGN FACES & CABINET.
 PAINT PMS 323C TEAL (SATIN FINISH)
 COPY: REVERSE CHANNEL HALO LIT LETTERS
 WHITE LED ILLUMINATION
 WALL MOUNT FLUSH TO BRICK WALL W/ CONCEALED FASTENERS

COLOR SPECIFICATIONS

PAINT SPECIFICATIONS

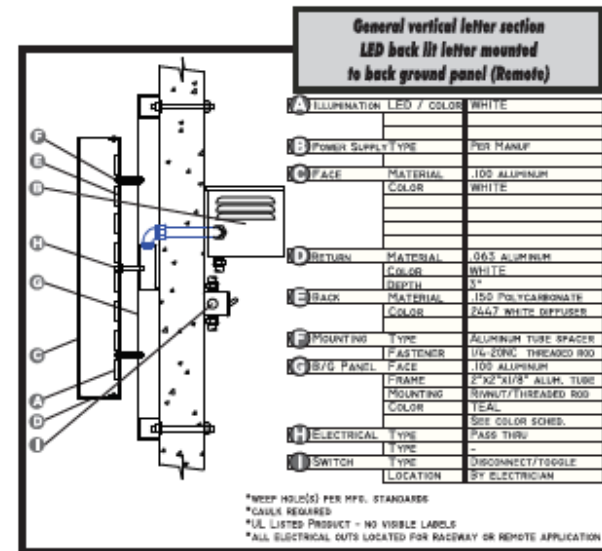
- M** PMS 323C TEAL (Satin Finish)
- PC** WHITE (Satin Finish)

NOTE:
PRELIMINARY ONLY!!

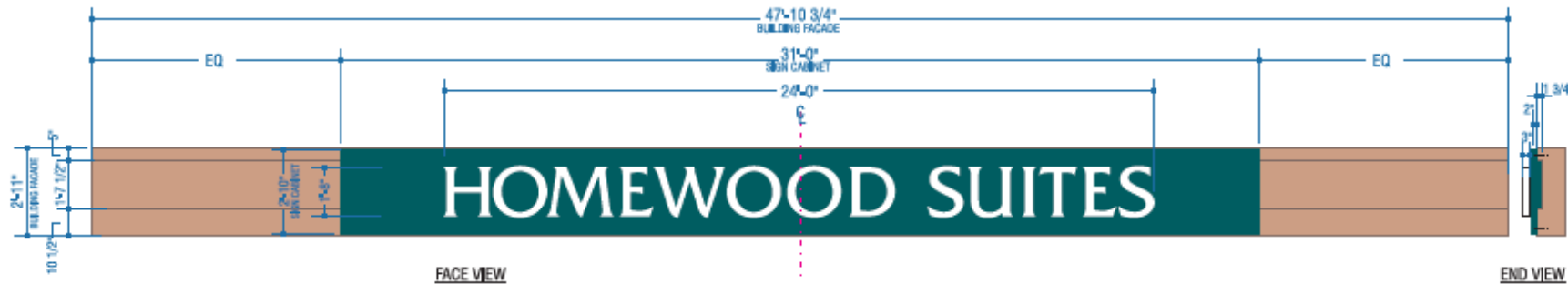
**ADDITIONAL DETAILS
 REQUIRED FOR "DRIVE THRU"
 STRUCTURE PRIOR TO MFG!!**



NIGHT VIEW



Milwaukee, WI



1 3/4" ADDITIONAL FILLER FOR BUILDING INSET BOTH SIDES OF SIGN

Background Panel w/ Halo Illuminated Channel Letters

1/4" = 1'-0"

ALUMINUM SIGN FACES & CABINET.
PAINT PMS 323C TEAL (SATIN FINISH)
COPY: REVERSE CHANNEL HALO LIT LETTERS
WHITE LED ILLUMINATION
WALL MOUNT FLUSH TO BRICK WALL W/ CONCEALED FASTENERS

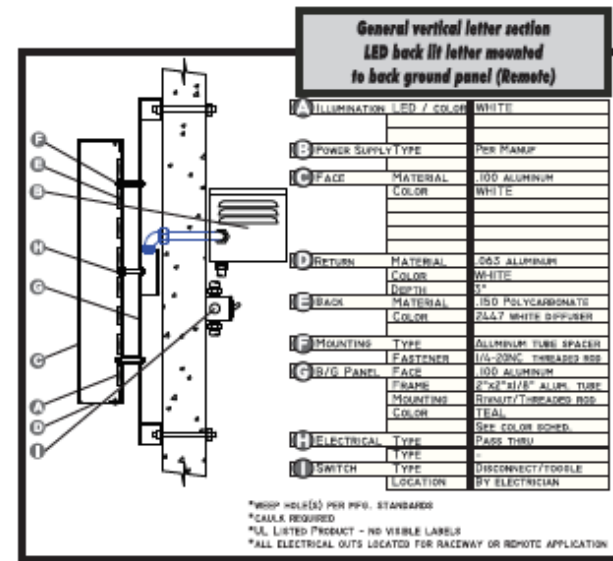
COLOR SPECIFICATIONS

PAINT SPECIFICATIONS

- PM** PMS 323C TEAL (Satin Finish)
- PR** WHITE (Satin Finish)



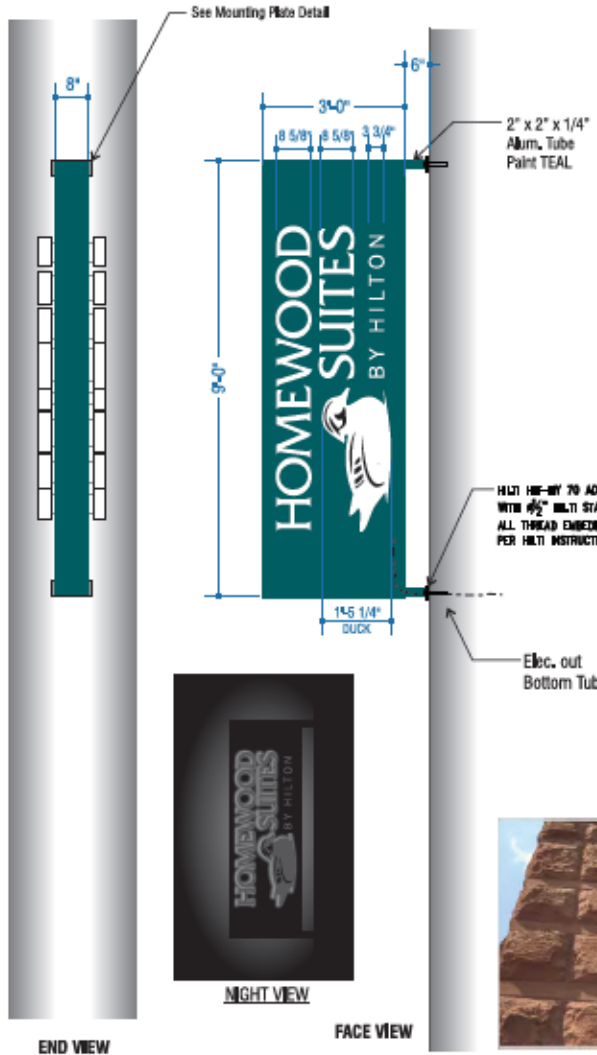
NIGHT VIEW





**CUSTOM D/F Projecting Wall Sign
w/ Halo Lit Channel Letters**

Sign D



D/F Projecting Wall Sign w/ Halo Lit Channel Letters

FABRICATED D/F SIGN CABINET, ALUMINUM FACE & FILLER,
PAINTED TEAL (SATIN FINISH).
NOTE: SIGN CABINET TO BE OF MINIMAL DEPTH

3/8" = 1'-0"

HOMWOOD SUITES:
3" Deep Rev. Channel Letters.
White faces & returns
White L.E.D. Halo Illumination

DUCK LOGO:
3" Deep Rev. Channel Letters.
White faces & returns
White L.E.D. Halo Illumination
BLACK VINYL DETAIL FIRST SURFACE

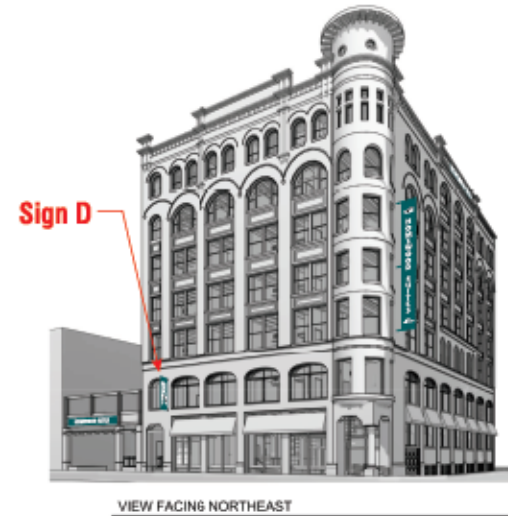
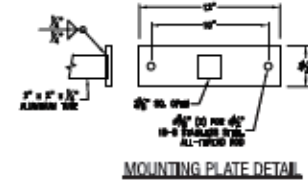
BY HILTON: 1/4" THICK FLAT CUT OUT ALUMINUM LETTERS (NON-ILLUM)
PAINT WHITE

MOUNTING
S/S HILTI & EPOXY FASTENING SYSTEM

COLOR SPECIFICATIONS

PAINT SPECIFICATIONS

- (P1) PMS 323C TEAL (Satin Finish)
- (P2) WHITE (Satin Finish)



Milwaukee, WI