

W. Lapham

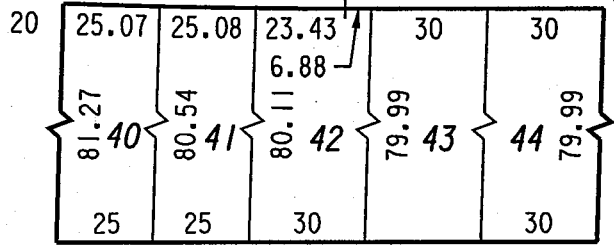
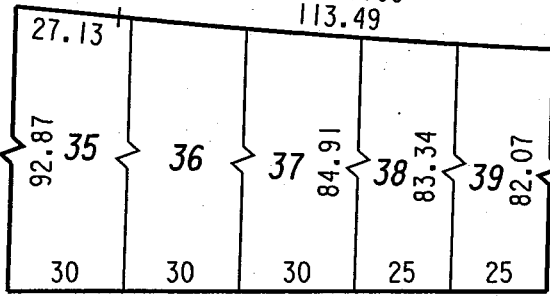
(R.O.W. VARIES)

Blvd.

R=2098.00
113.49

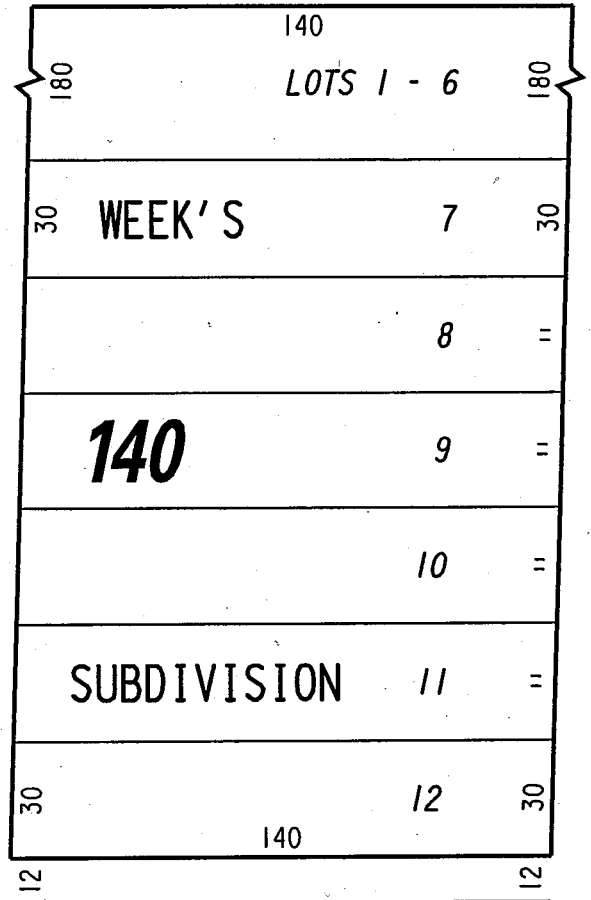
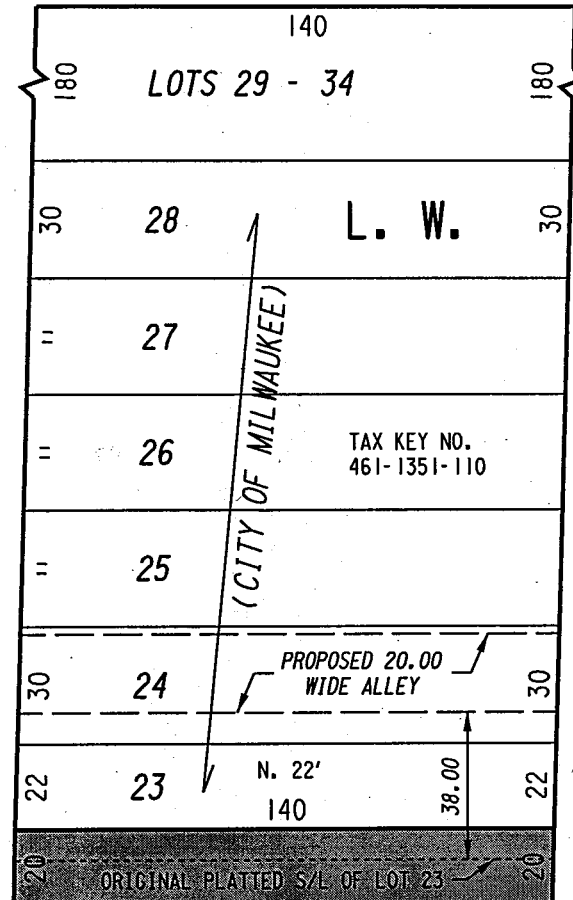
R=2098.00

St.

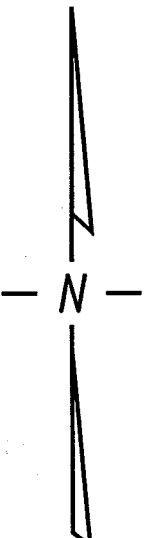


St.

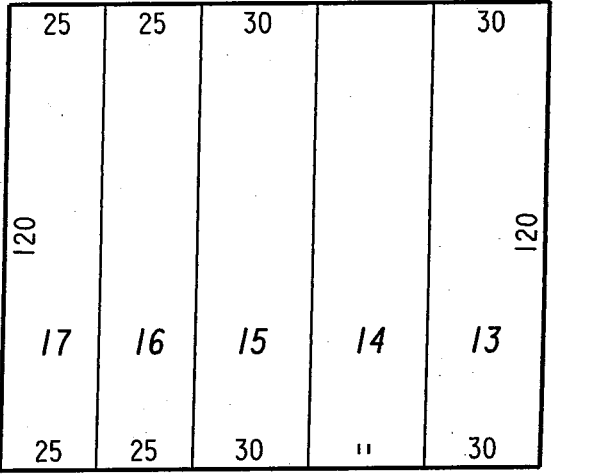
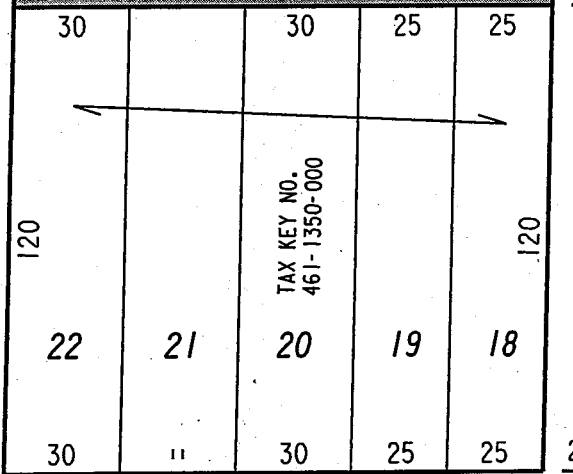
(76' R.O.W.)



(76' R.O.W.)



S. 12th



S. 11th

(70' R.O.W.)

W. Historic Mitchell

St.

EXHIBIT "A"

FILE NO. 011407

INFRASTRUCTURE SERVICES DIVISION

MILWAUKEE, WISCONSIN

ASSIGNED TO: W.E. FUCHS

CH'K'D. BY: M.C. WILLIAMS

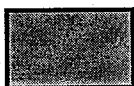
DRAWN BY: W.E.F.

DATE: MARCH 4, 2002

PROJECT/GRANT NO.: WK52337150

SCALE: 1" = 50'

APPROVED BY:



PORTION OF PUBLIC ALLEY PROPOSED TO BE VACATED

Marcia Lindholm
CENTRAL DRAFTING & RECORDS MANAGER

Mary Blundell
CITY ENGINEER