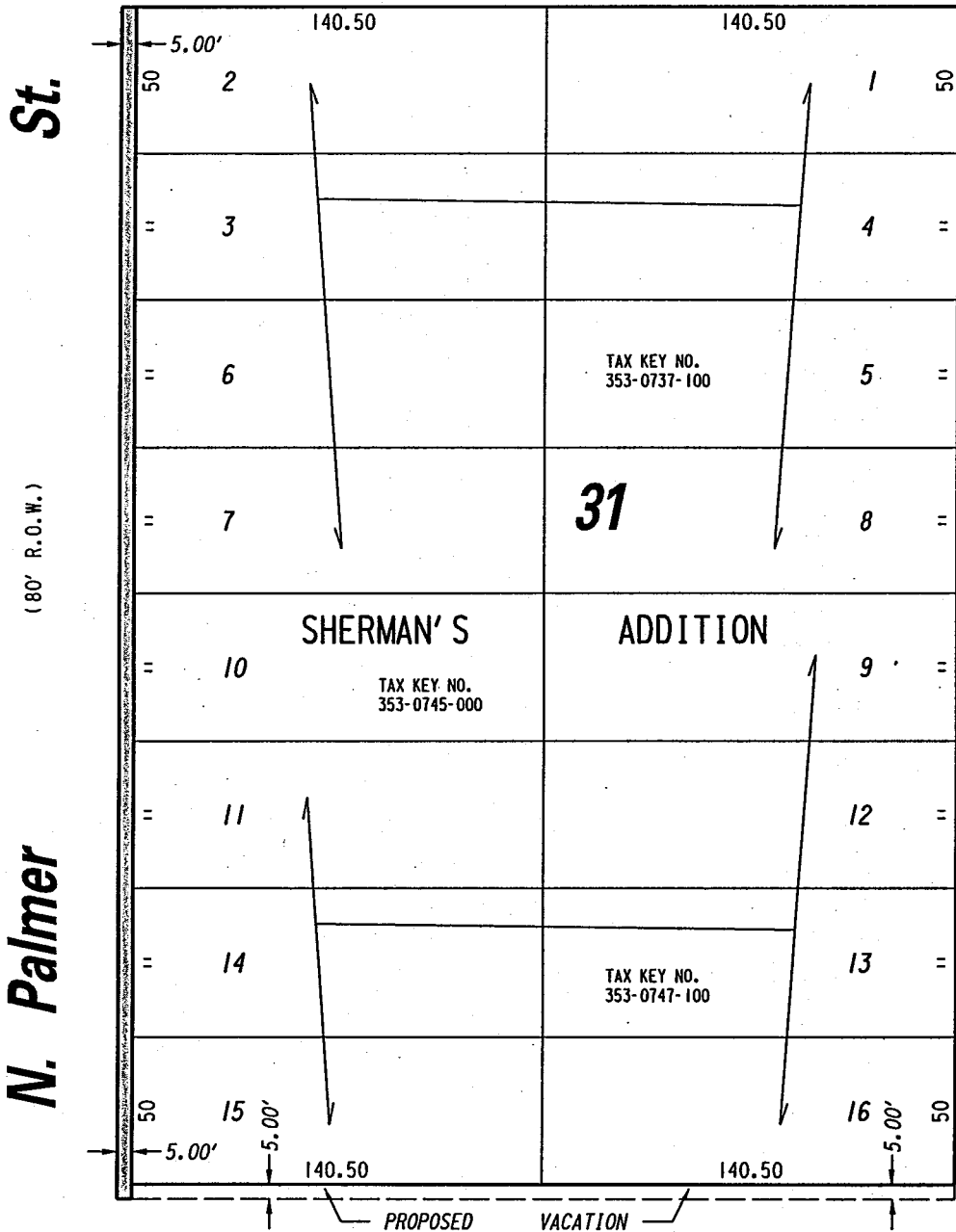


E. Brown

(80' R.O.W.)

St.



St.

(80' R.O.W.)

N. Palmer

St.

(70' R.O.W.)

N. Hubbard

E. Reservoir

(80' R.O.W.)

Ave.

 PORTION OF PUBLIC STREET PROPOSED TO BE VACATED

REVISED: NOV. 29, 2000
PROJECT LIMITS REVISED

REVISED: MARCH 22, 2001
PROJECT LIMITS REVISED

EXHIBIT "A"

FILE NO. 991923

INFRASTRUCTURE SERVICES DIVISION

MILWAUKEE, WISCONSIN

ASSIGNED TO: W.E. FUCHS

CH'K'D. BY: M.C. WILLIAMS

DRAWN BY: W.E.F.

DATE: MAY 8, 2000

PROJECT/GRANT NO.: WK52337095

SCALE: 1" = 50'

APPROVED BY:


CENTRAL DRAFTING & RECORDS MANAGER


CITY ENGINEER