

CHAIR

- PUBLIC WORKS COMMITTEE
- HISTORIC PRESERVATION COMMISSION
- HISTORIC THIRD WARD
ARCHITECTURAL REVIEW BOARD

**MEMBER**

- JUDICIARY & LEGISLATION COMMITTEE
- ZONING, NEIGHBORHOODS
& DEVELOPMENT COMMITTEE
- STEERING & RULES COMMITTEE
- BOARD OF HARBOR COMMISSIONERS

ROBERT J. BAUMAN
ALDERMAN, 4TH DISTRICT

January 11, 2007

Mr. Jeffrey Mantes, P.E.
Commissioner
Department of Public Works
841 N. Broadway St.
Milwaukee, WI. 53202

RE: City Hall Restoration

Dear Mr. Mantes:

Please find another photo of the city hall restoration work that purports to show the mismatched coloration of the new brick and the existing brick. This photo was sent to me anonymously. The photo appears to show that the colors do not match.

These photos continue to feed my concern that this job is not being performed properly despite being performed on time and on budget.

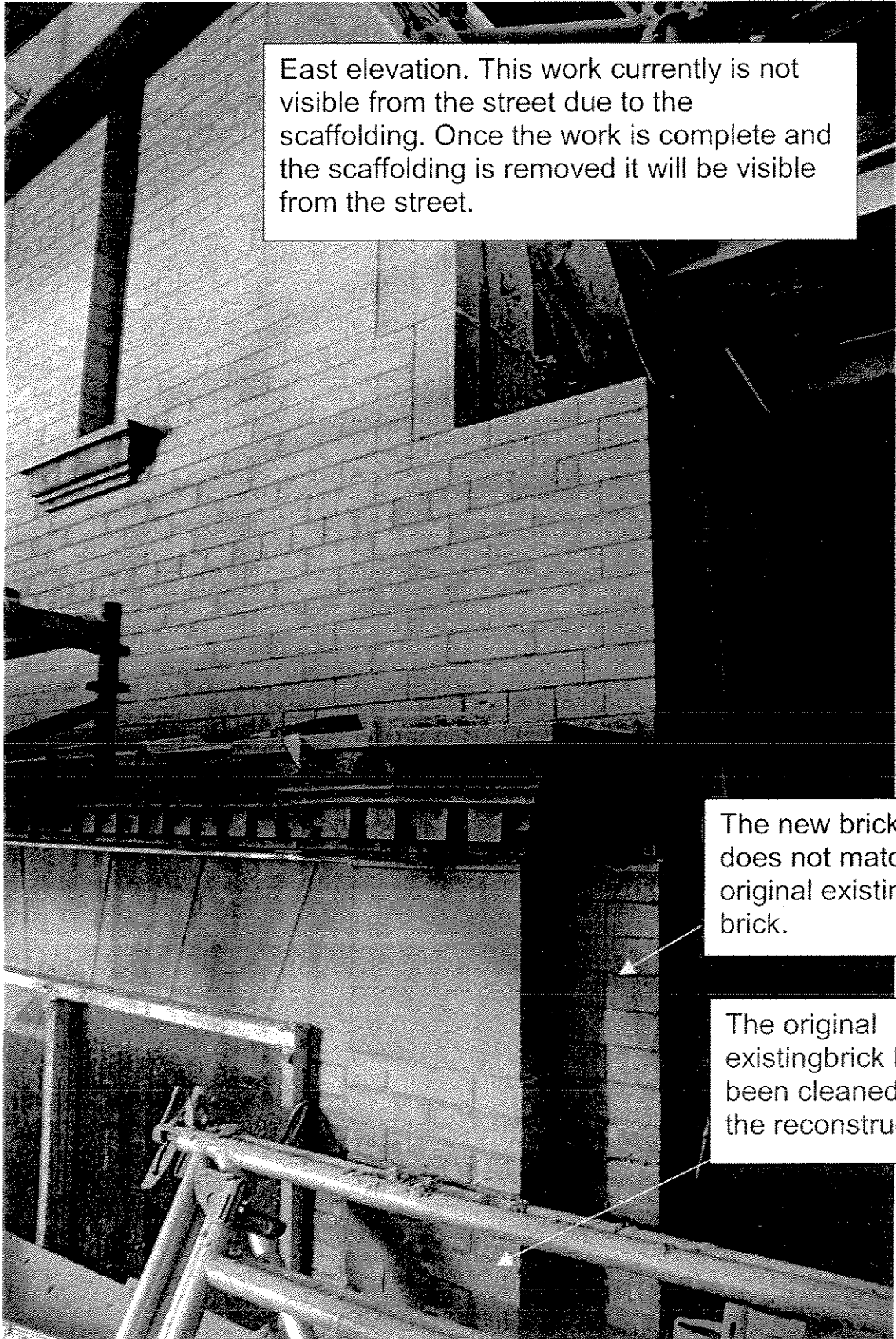
Thank you for your continued attention to this matter.

Sincerely,

A handwritten signature in cursive script that reads "Robert J. Bauman".

Robert J. Bauman
Alderman, 4th District

1/4/07



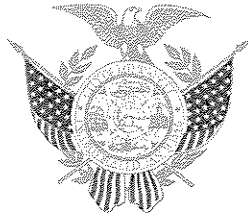
East elevation. This work currently is not visible from the street due to the scaffolding. Once the work is complete and the scaffolding is removed it will be visible from the street.

The new brick does not match original existing brick.

The original existing brick has been cleaned prior to the reconstruction.

CHAIR

- PUBLIC WORKS COMMITTEE
- HISTORIC PRESERVATION COMMISSION
- HISTORIC THIRD WARD
ARCHITECTURAL REVIEW BOARD

**MEMBER**

- JUDICIARY & LEGISLATION COMMITTEE
- ZONING, NEIGHBORHOODS
& DEVELOPMENT COMMITTEE
- STEERING & RULES COMMITTEE
- BOARD OF HARBOR COMMISSIONERS

ROBERT J. BAUMAN

ALDERMAN, 4TH DISTRICT

December 13, 2006

Mr. Jeffrey Mantes
Commissioner
Department of Public Works
841 N. Broadway St.
Milwaukee, WI. 53202

RE: City Hall Restoration

Dear Commissioner Mantes:

I am writing with regard to several concerns about the restoration of City Hall. Your office has reported on several occasions that the job is presently on schedule and on budget and that the contractor has met or exceeded RPP and EBE goals. This is very good news.

However, an equally important measure of success for this project is the quality of the restoration work. As you know, City Hall is Milwaukee's premiere architectural treasure. It is a very complex building and the restoration work is very challenging—factors which no doubt explain the cost of the project and absence of bidders.

Since the inception of the project, I have had concerns about quality and workmanship. These concerns are the product of a steady drumbeat of communications from various people, some anonymous. Most recently, I have received communications and photographs raising questions about the color matching of the brick.

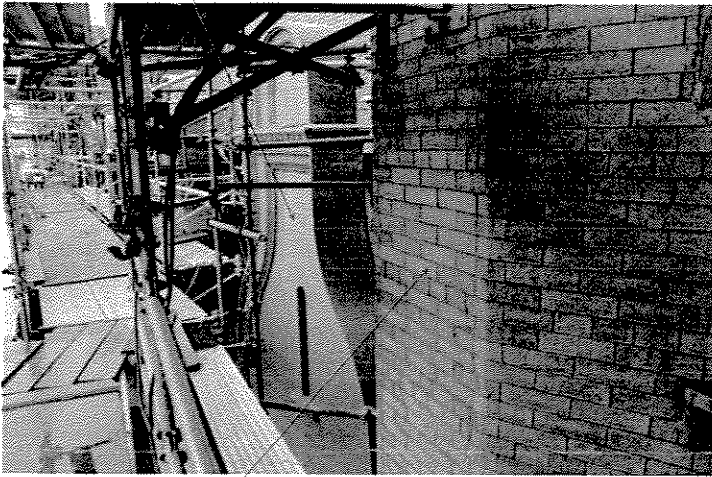
As you know, your office is the project manager. I do not have the authority to direct this project or to accept or reject the work. Nevertheless people continue to communicate their concerns to me. I will be pleased to pass on the latest information, however, I continue to have concerns regarding quality and workmanship.

Sincerely,

A handwritten signature in black ink, appearing to read 'RJB', written over a white background.

Robert J. Bauman
Alderman, 4th District

New Brick



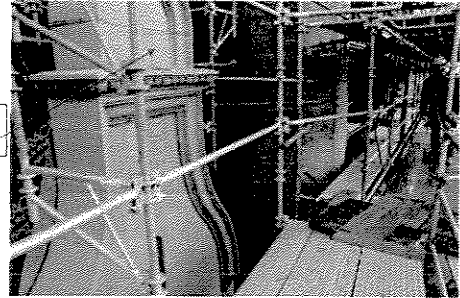
Original Brick

This is a photo taken of the west elevation.

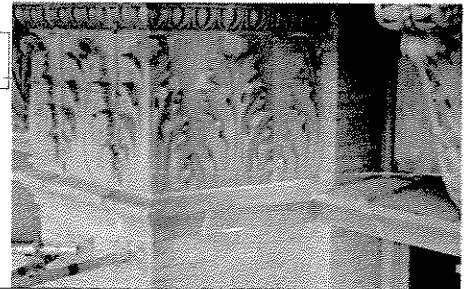
This illustrates the difference in color between the original brick and the new brick.

**THIS CAN NOT BE SEEN FROM THE STREET.
YOU MUST GO UP ON THE SCAFFOLD TO SEE THIS.**

New Terra Cotta

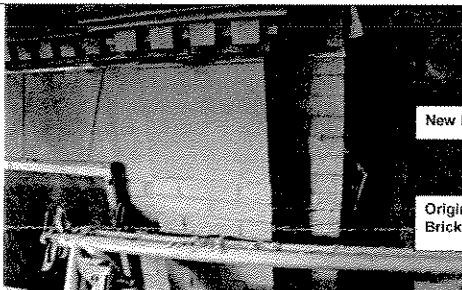


Original Terra Cotta



These previous photos were taken of the west elevation. This photo illustrates the range in colors of the original terra cotta. The new terra cotta is very uniform in color. The scaffolding is in the way and currently this cannot be seen from the street.

These remaining photos are taken of the east elevation. The scaffolding is in the way and currently this cannot be seen from the street.



New Brick

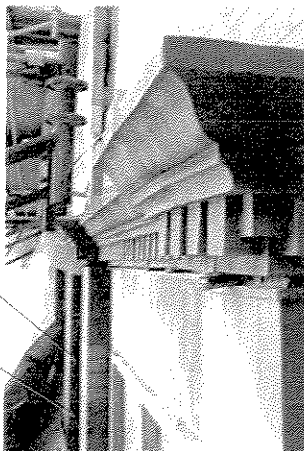
Original Brick

The original brick has already been cleaned prior to the new reconstruction.

The colors do not match.

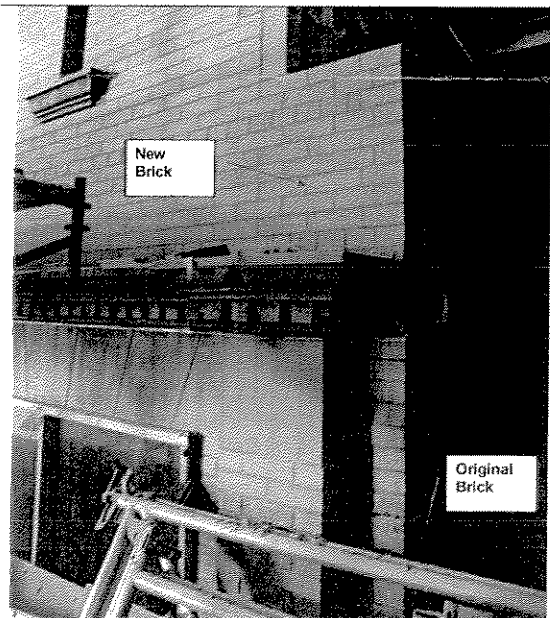
How is it possible that the Architects and contractors in charge of this restoration find this acceptable?

Matching brick is not easy,... but it is not impossible.
If this were your home would you be satisfied?



New Brick

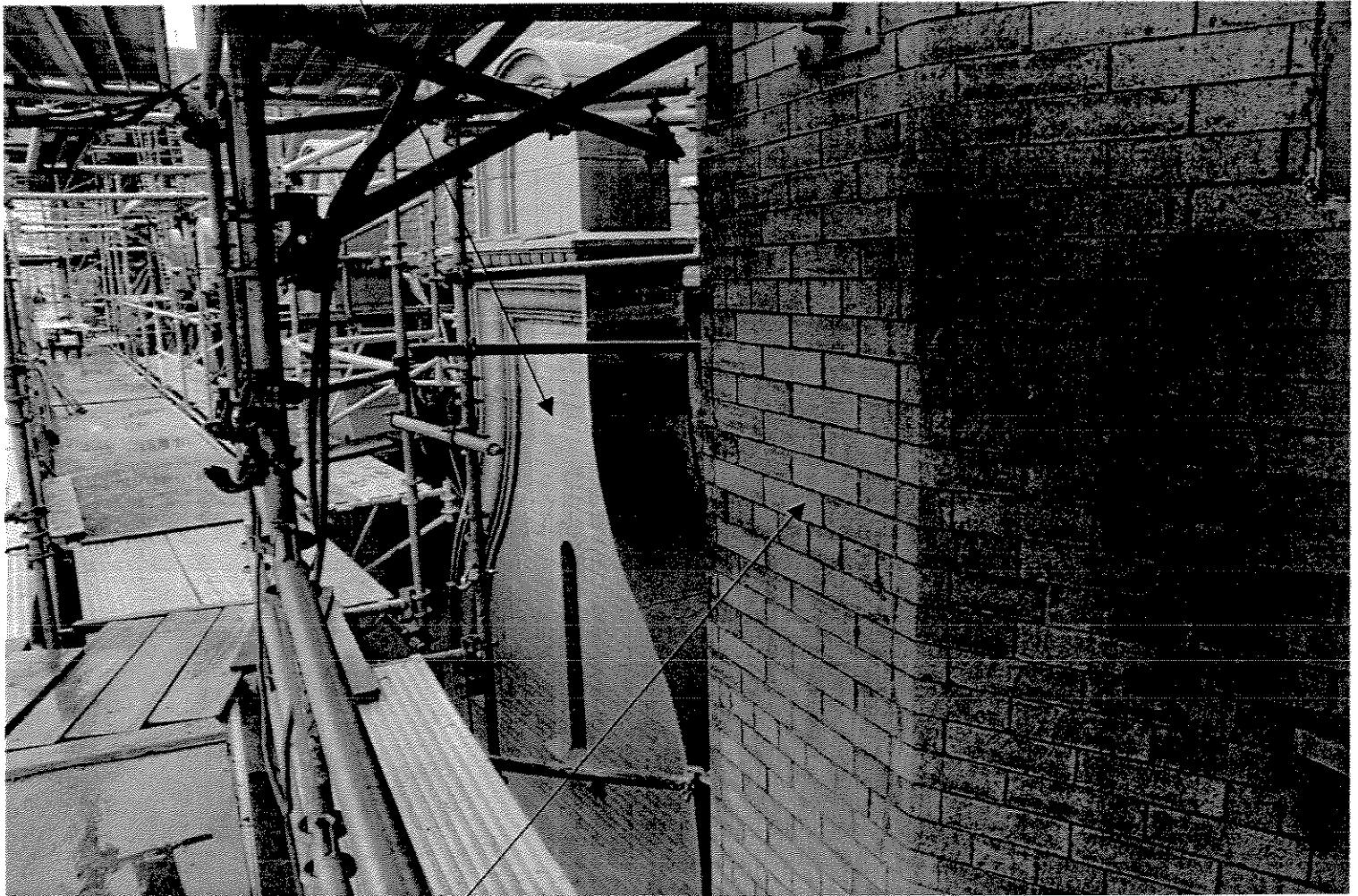
Original Brick



New Brick

Original Brick

New Brick

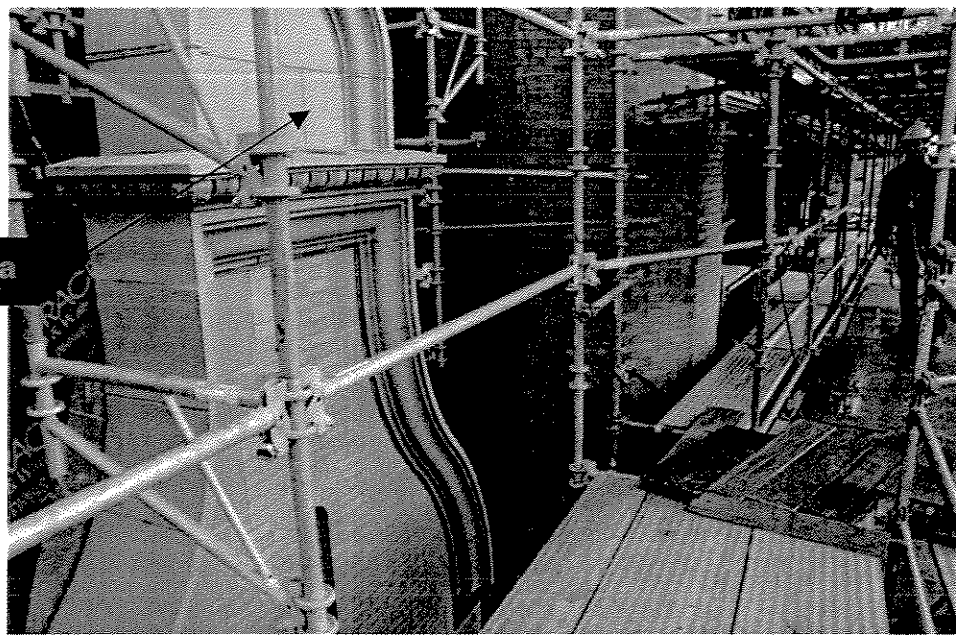


**Existing
Original Brick**

This is a photo taken of the west elevation. The southern most dormer that is nearly complete. This illustrates the difference in color between the original brick and the new brick.

**THIS CAN NOT BE SEEN FROM THE STREET.
YOU MUST GO UP ON THE SCAFFOLD TO SEE THIS.**

New Terra Cotta



**Existing
Original Terra
Cotta**



These are photos taken of the west elevation. This photo illustrates the range in colors of the original terra cotta. The new terra cotta is very uniform in color.

**THIS CAN NOT BE SEEN FROM THE STREET.
YOU MUST GO UP ON THE SCAFFOLD TO SEE THIS.**