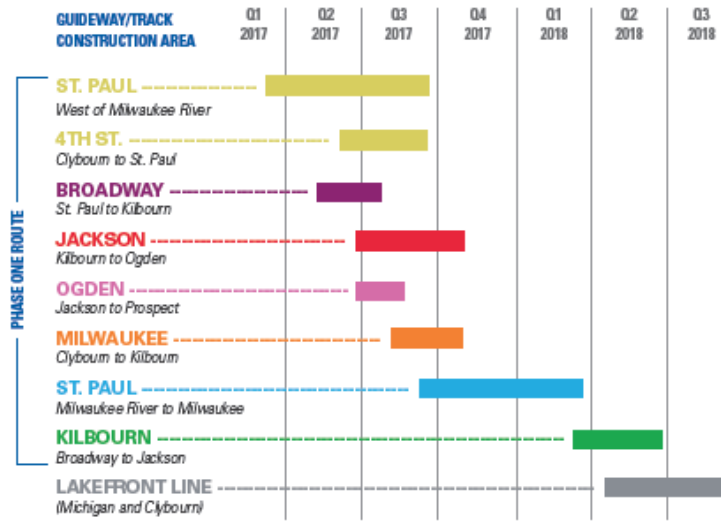




the milwaukee
STREETCAR

www.THEMILWAUKEESTREETCAR.com

THE MILWAUKEE STREETCAR — PRELIMINARY CONSTRUCTION PLANNING



PHASE ONE ROUTE

Note - This preliminary schedule shows guideway/track construction only. There will be other construction activity throughout the route before and after the draft time frame shown here.



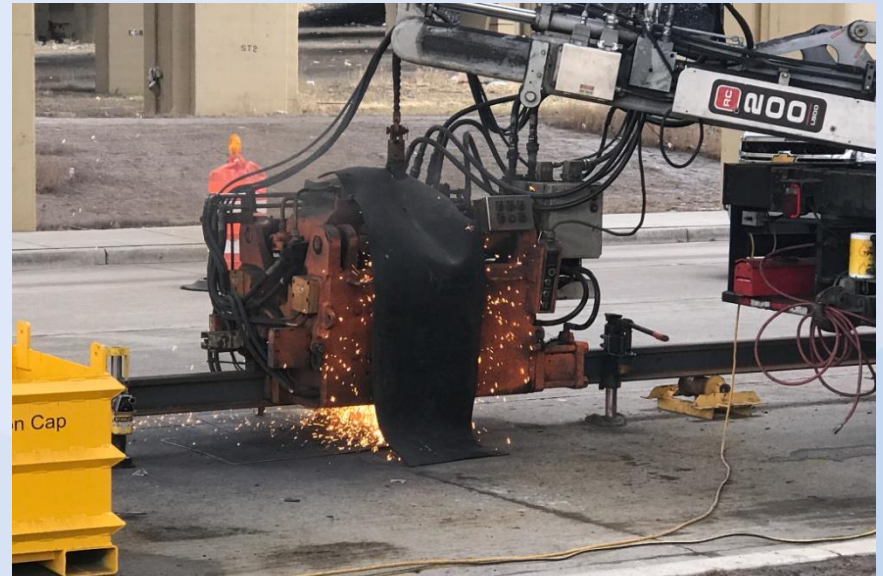
- STREETCAR STOP
- RAIL STORAGE AND WELDING LOCATION (CURB LANE ONLY)

PROJECT CONTACT INFORMATION:
 Streetcar Construction Helpline: 414-388-9418
 Email: comments@themilwaukeestreetcar.com
 Sign up for construction news:
themilwaukeestreetcar.com/on-the-route

PRELIMINARY: SUBJECT TO CHANGE

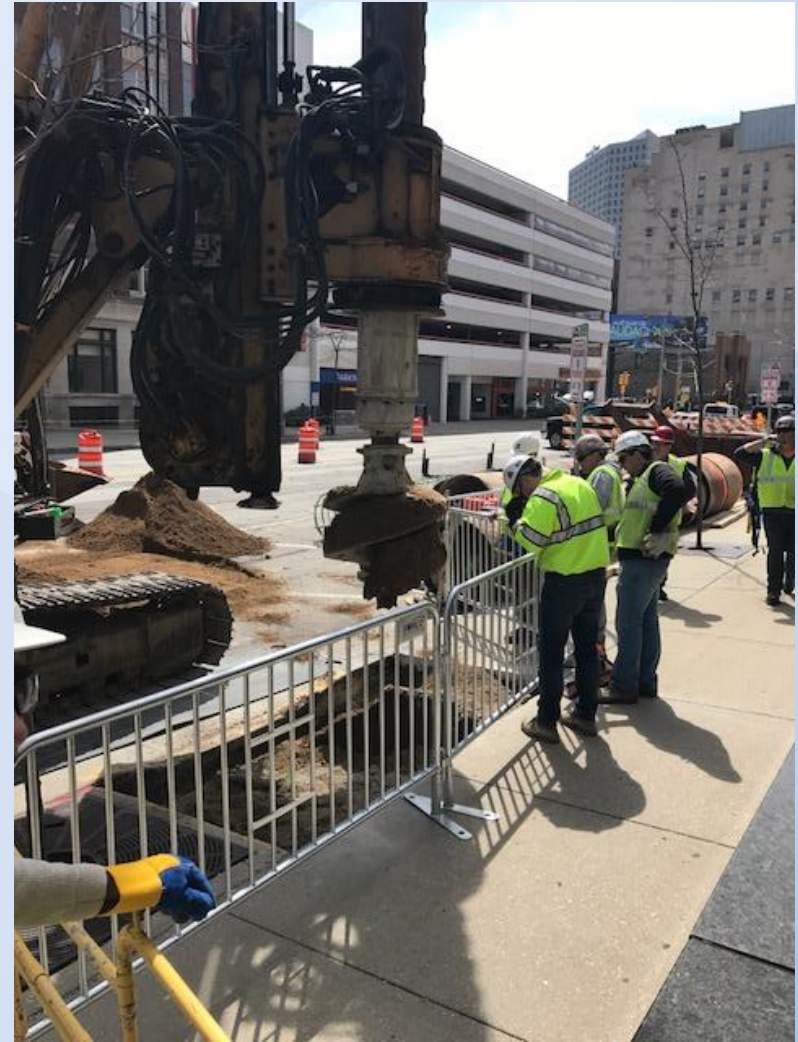
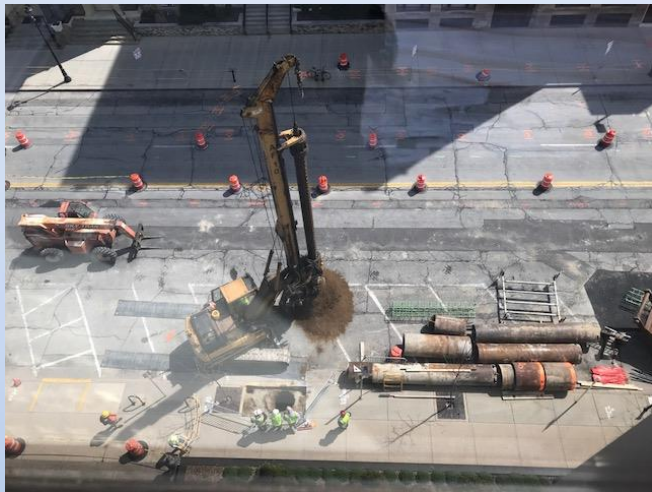
Construction Status

- Flashbutt welding of rail sections completed



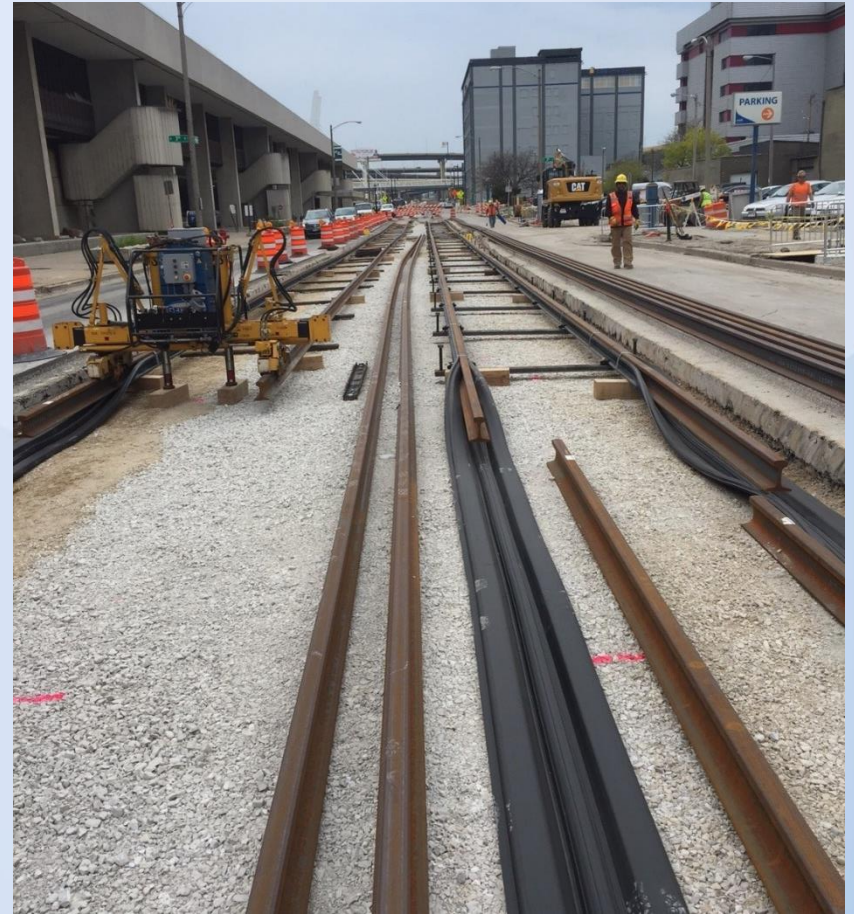
Construction Status

- OCS Pole foundation and footing excavation and construction ongoing



Construction Status

- Track and Guideway demolition/excavation and skeletonization ongoing



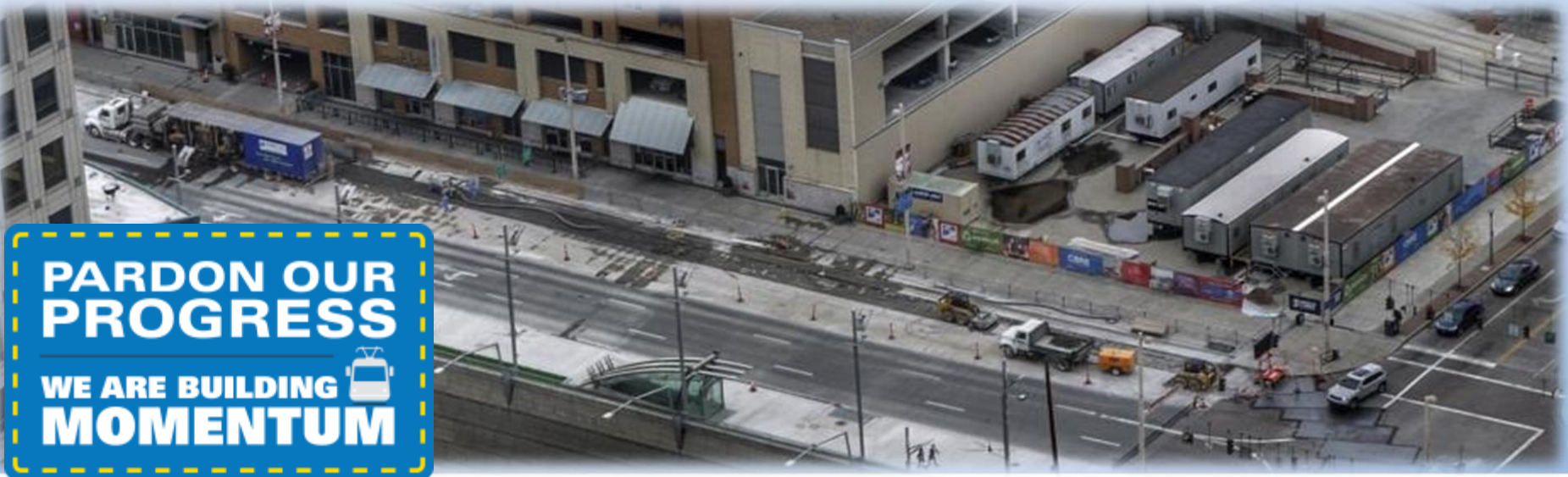
Construction Status

- First guideway section concrete pour completed



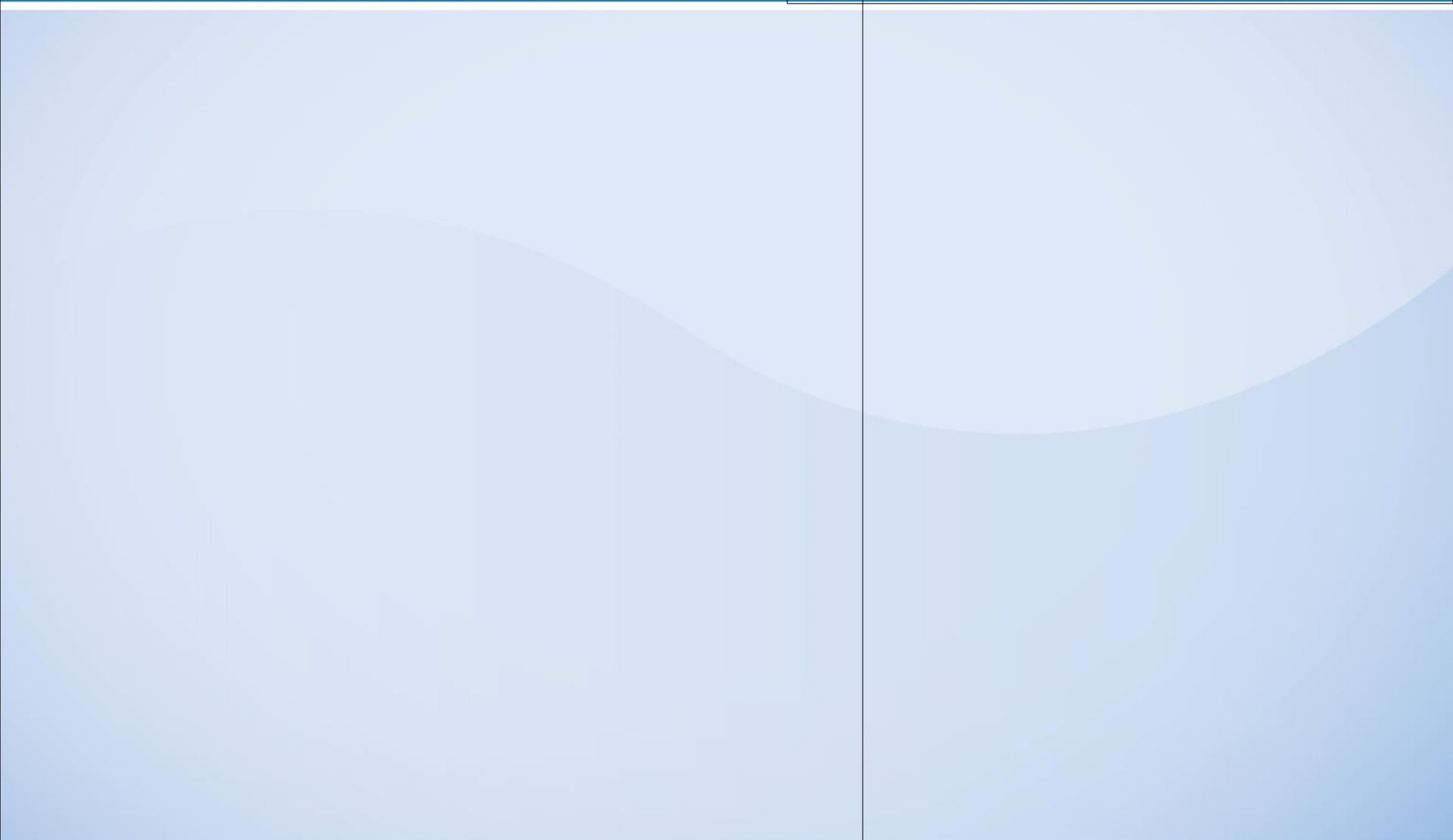
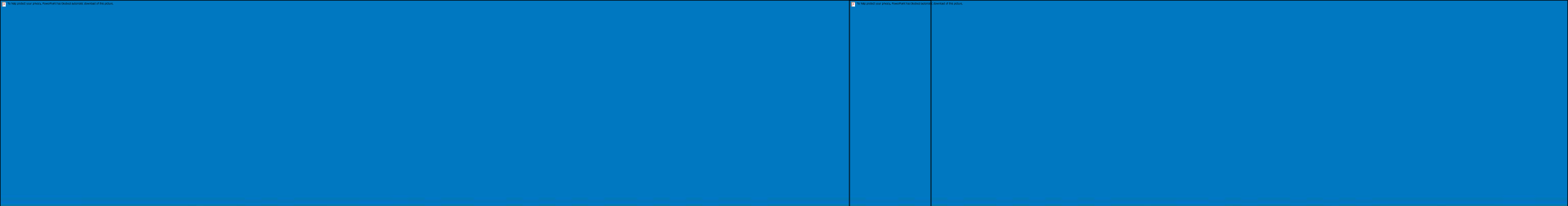
Construction Status: Traffic Control Strategies

- At least one direction of traffic maintained in most areas
- Pedestrian access maintained
- Coordination with major events and traffic generators
 - St. Paul is now opened to bi-directional traffic for Summerfest
- Comprehensive look at business loading zones and driveway access



Construction Status: Public Involvement

- One-on-one meetings to prepare property owners along route
- Website and social media kept up-to-date with construction information
- Localized and broader e-blasts
- Construction team has standing weekly meetings to meet with local stakeholders
- Customized direction sheets, construction updates and business signing



Vehicle Procurement

- Conducting Bi-weekly Vehicle Engineering Meetings
- Vehicle Design is nearing completion
- Anticipated delivery of 1st Vehicle End of 2017



Staying Informed

- ✓ Facebook: [Facebook.com/TheMilwaukeeStreetcar](https://www.facebook.com/TheMilwaukeeStreetcar)
- ✓ Twitter: [@MilwStreetcar](https://twitter.com/MilwStreetcar)
- ✓ Streetcar Construction Helpline: (414)-388-9418
- ✓ Website: www.TheMilwaukeeStreetcar.com
 - Construction News Sign-Up
 - E-Newsletters

