

---

# SEEDS OF HEALTH - HIGH SCHOOL EXTERIOR BUILDING IMPROVEMENTS

918 VEL R. PHILLIPS AVE  
MILWAUKEE, WI 53203



SEEDS OF  
HEALTH, INC.

---

CERTIFICATE OF APPROPRIATENESS - AMENDMENT

EXTERIOR RENOVATION

07/06/2022

PROJECT NUMBER: 319396-02

# ABBREVIATIONS

<b>A</b> air conditioning	<b>C</b> clear	<b>F</b> female	<b>I</b> inside diameter	<b>P</b> panel joint	<b>T</b> time & materials
<b>AE</b> Architect/Engineer	<b>CLR</b> construction management	<b>F</b> fire alarm	<b>INSUL</b> insulation	<b>PLAM</b> glass laminate	<b>TEMP</b> temperature
<b>ACT</b> acoustic	<b>CM</b> construction manager	<b>FA</b> fire alarm	<b>INT</b> interior	<b>PLYWD</b> plywood	<b>TEMP</b> temporary
<b>ADDL</b> additional	<b>CONU</b> concrete unit	<b>FD</b> fire alarm	<b>J</b> janitor sink	<b>PRL</b> panel	<b>TER</b> terrazzo
<b>ADDM</b> addendum	<b>CO</b> cleanout	<b>FAB</b> fabric	<b>JS</b> joint	<b>PREFAB</b> prefabricated	<b>TERR</b> terrazzo base
<b>ADJ</b> adjustable	<b>COLM</b> column	<b>FE</b> fire extinguisher	<b>LAM</b> laminate	<b>PSI</b> pounds per square inch	<b>TFF</b> top of finished floor
<b>AFC</b> above finished	<b>CONC</b> concrete	<b>FEC</b> fire extinguisher cabinet	<b>LAV</b> lavatory	<b>PT</b> partition	<b>TGD</b> top of grade
<b>AF</b> above finished	<b>CORR</b> corrugated	<b>FHC</b> fire hose cabinet	<b>LF</b> linear foot	<b>PTN</b> partition	<b>TOB</b> top of beam
<b>AFG</b> above finished	<b>CSWK</b> casework	<b>FIN</b> finish	<b>LL</b> live load	<b>Q</b> quarry tile	<b>TOC</b> top of concrete
<b>AFS</b> above finished	<b>CT</b> cast	<b>FLR</b> floor	<b>M</b> material	<b>QTY</b> quantity	<b>TOI</b> top of insulation
<b>ALT</b> alternate	<b>CTB</b> ceramic tile base	<b>FM</b> factory mutual	<b>MAX</b> maximum	<b>QTY</b> quantity	<b>TOS</b> top of steel
<b>ALM</b> aluminum	<b>DBL</b> double	<b>FP</b> fireproof	<b>MCH</b> mechanical	<b>QTY</b> quantity	<b>TYP</b> typical
<b>ALUM</b> aluminum	<b>DEM</b> demolition	<b>FR</b> fire retardant	<b>MIC</b> mechanical	<b>QTY</b> quantity	<b>UNO</b> unless noted otherwise
<b>APT</b> apartment	<b>DEPT</b> department	<b>FRP</b> fire retardant plastic	<b>MICRO</b> microwave	<b>QTY</b> quantity	<b>VERT</b> vertical
<b>AP</b> acoustic panel	<b>DI</b> drinking fountain	<b>FRT</b> fire retardant treated	<b>MIN</b> minimum	<b>QTY</b> quantity	<b>VFR</b> vendor furnished, contractor installed
<b>ASC</b> above suspended ceiling	<b>DIA</b> diameter	<b>FTG</b> footing	<b>MISC</b> miscellaneous	<b>QTY</b> quantity	<b>VFI</b> vendor furnished, contractor installed
<b>B</b> baseboard	<b>DR</b> door	<b>GA</b> gauge	<b>MJ</b> movement joint	<b>QTY</b> quantity	<b>VFM</b> vendor furnished, contractor installed
<b>BLDG</b> building	<b>DSL</b> detail	<b>GB</b> galvanized	<b>MO</b> mosaic	<b>QTY</b> quantity	<b>VNR</b> vendor furnished, contractor installed
<b>BLT</b> borrowed tile	<b>DS</b> downspout	<b>GL</b> glass	<b>MS</b> masonry	<b>QTY</b> quantity	<b>VNT</b> vendor furnished, contractor installed
<b>BLW</b> below	<b>DW</b> dishwasher	<b>GLU</b> glue laminated	<b>MTL</b> metal	<b>QTY</b> quantity	<b>VNT</b> vendor furnished, contractor installed
<b>BPL</b> base plate	<b>DWG</b> drawing	<b>GR</b> grade	<b>NA</b> not applicable	<b>QTY</b> quantity	<b>VNT</b> vendor furnished, contractor installed
<b>BS</b> base	<b>E</b> east	<b>GR</b> grade	<b>NIC</b> not in contract	<b>QTY</b> quantity	<b>VNT</b> vendor furnished, contractor installed
<b>BOS</b> bottom of steel	<b>EF</b> exterior finish	<b>GT</b> gully	<b>NO</b> not	<b>QTY</b> quantity	<b>VNT</b> vendor furnished, contractor installed
<b>CB</b> catch basin	<b>EL</b> elevation	<b>GT</b> gully	<b>NS</b> nominal	<b>QTY</b> quantity	<b>VNT</b> vendor furnished, contractor installed
<b>CFD</b> contractor furnished	<b>EJ</b> expansion joint	<b>GT</b> gully	<b>NSC</b> no scale	<b>QTY</b> quantity	<b>VNT</b> vendor furnished, contractor installed
<b>CFD</b> contractor furnished	<b>ELEC</b> electrical	<b>GT</b> gully	<b>NTS</b> not to scale	<b>QTY</b> quantity	<b>VNT</b> vendor furnished, contractor installed
<b>CFD</b> contractor furnished	<b>ELEV</b> elevator	<b>GT</b> gully	<b>O</b> overall	<b>QTY</b> quantity	<b>VNT</b> vendor furnished, contractor installed
<b>CFW</b> contractor furnished	<b>EP</b> epoxy	<b>GT</b> gully	<b>OC</b> on center	<b>QTY</b> quantity	<b>VNT</b> vendor furnished, contractor installed
<b>CG</b> corner guard	<b>EQ</b> equal	<b>GT</b> gully	<b>OD</b> outside diameter	<b>QTY</b> quantity	<b>VNT</b> vendor furnished, contractor installed
<b>CH</b> cast-in-place	<b>EQ</b> equal	<b>GT</b> gully	<b>OH</b> overhead	<b>QTY</b> quantity	<b>VNT</b> vendor furnished, contractor installed
<b>CH</b> cast-in-place	<b>EQ</b> equal	<b>GT</b> gully	<b>OPH</b> opposite hand	<b>QTY</b> quantity	<b>VNT</b> vendor furnished, contractor installed
<b>CH</b> cast-in-place	<b>EQ</b> equal	<b>GT</b> gully	<b>OPNG</b> opening	<b>QTY</b> quantity	<b>VNT</b> vendor furnished, contractor installed
<b>CH</b> cast-in-place	<b>EQ</b> equal	<b>GT</b> gully	<b>OPNG</b> opening	<b>QTY</b> quantity	<b>VNT</b> vendor furnished, contractor installed
<b>CH</b> cast-in-place	<b>EQ</b> equal	<b>GT</b> gully	<b>OPNG</b> opening	<b>QTY</b> quantity	<b>VNT</b> vendor furnished, contractor installed

# PROJECT TEAM

## ARCHITECTURAL EPPSTEIN UHEN ARCHITECTS, INC.

333 East Chicago Street  
Milwaukee, WI 53207  
PHONE: (414) 271-5350  
www.eua.com

PROJECT CONTACT:  
DIRECT PHONE: Maclain Schramm, Project Manager (414) 291-8181  
EMAIL ADDRESS: maclains@eua.com

## GENERAL CONTRACTOR BERGHAMMER CONSTRUCTION CORPORATION

4750 N. 132ND ST.  
BUTLER, WI 53007  
PHONE: (262) 790-4750  
www.berghammer.com

PROJECT CONTACT:  
DIRECT PHONE: Werner Holentunder, Senior VP (262) 790-8152  
EMAIL ADDRESS: WernerH@berghammer.com

# SHEET INDEX

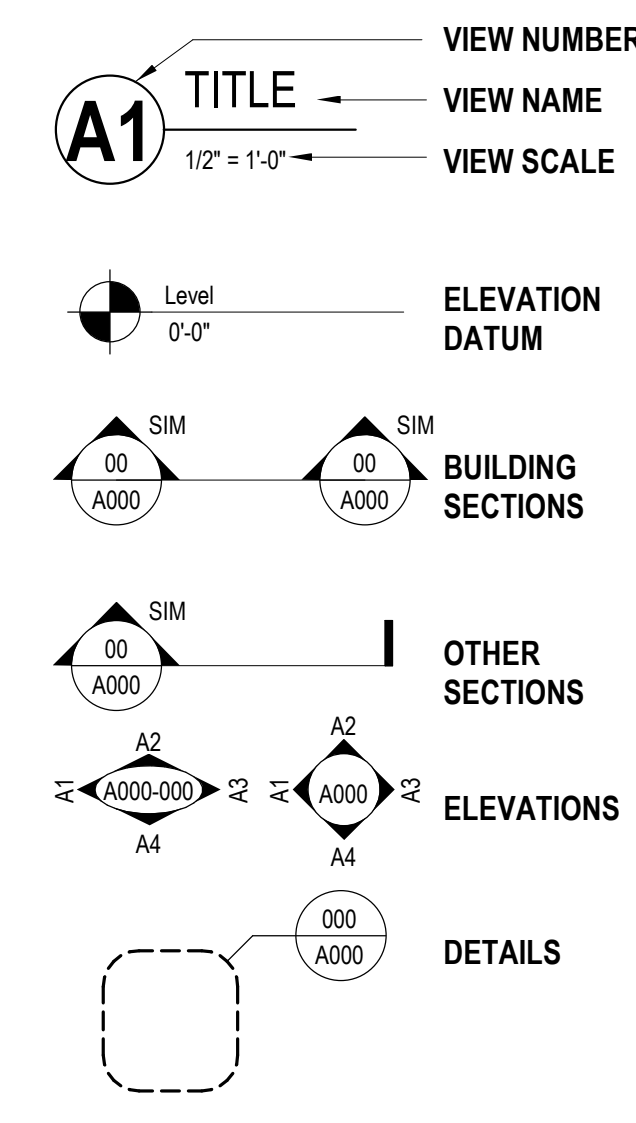
GENERAL	G101 INDEX AND LIFE SAFETY ELEVATIONS
ARCHITECTURAL	A200 EXTERIOR ELEVATIONS
A201	EXTERIOR ELEVATIONS
A202	EXTERIOR ELEVATIONS
A220	EXTERIOR FRAME TYPES & EXTERIOR DETAILS



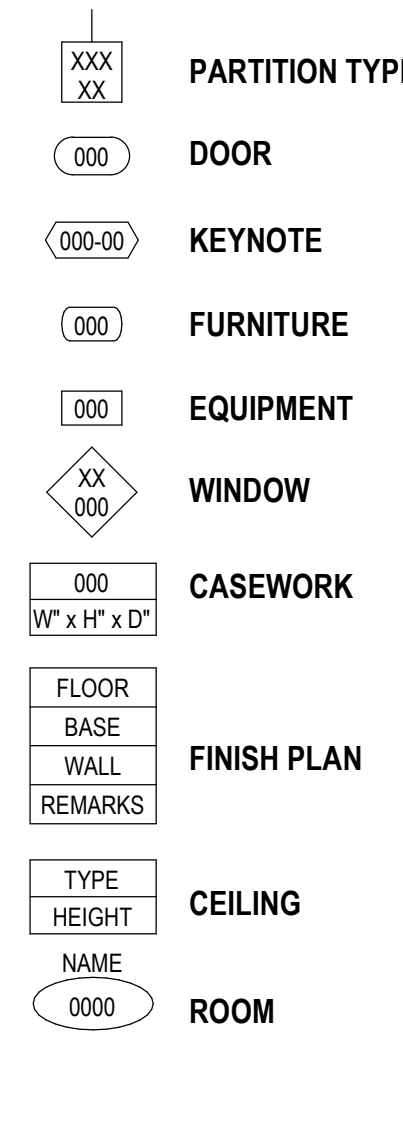
milwaukee | madison | green bay | denver | atlanta

# SYMBOL LEGEND

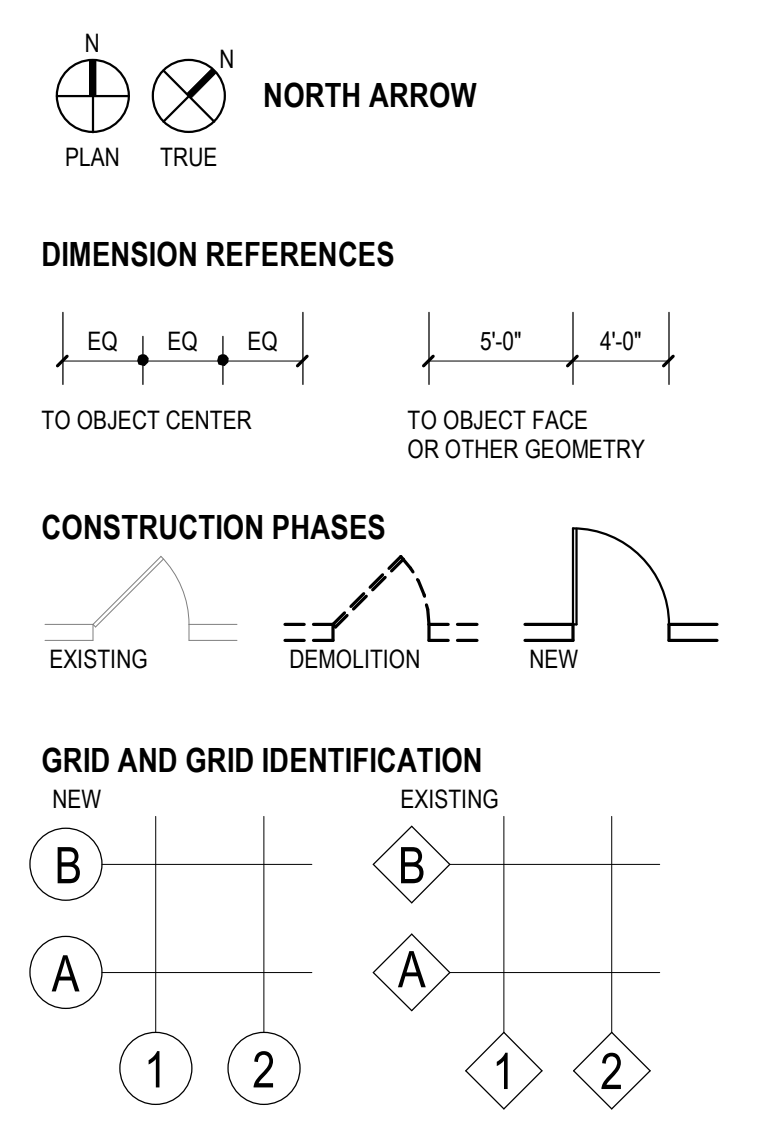
## CALLOUTS



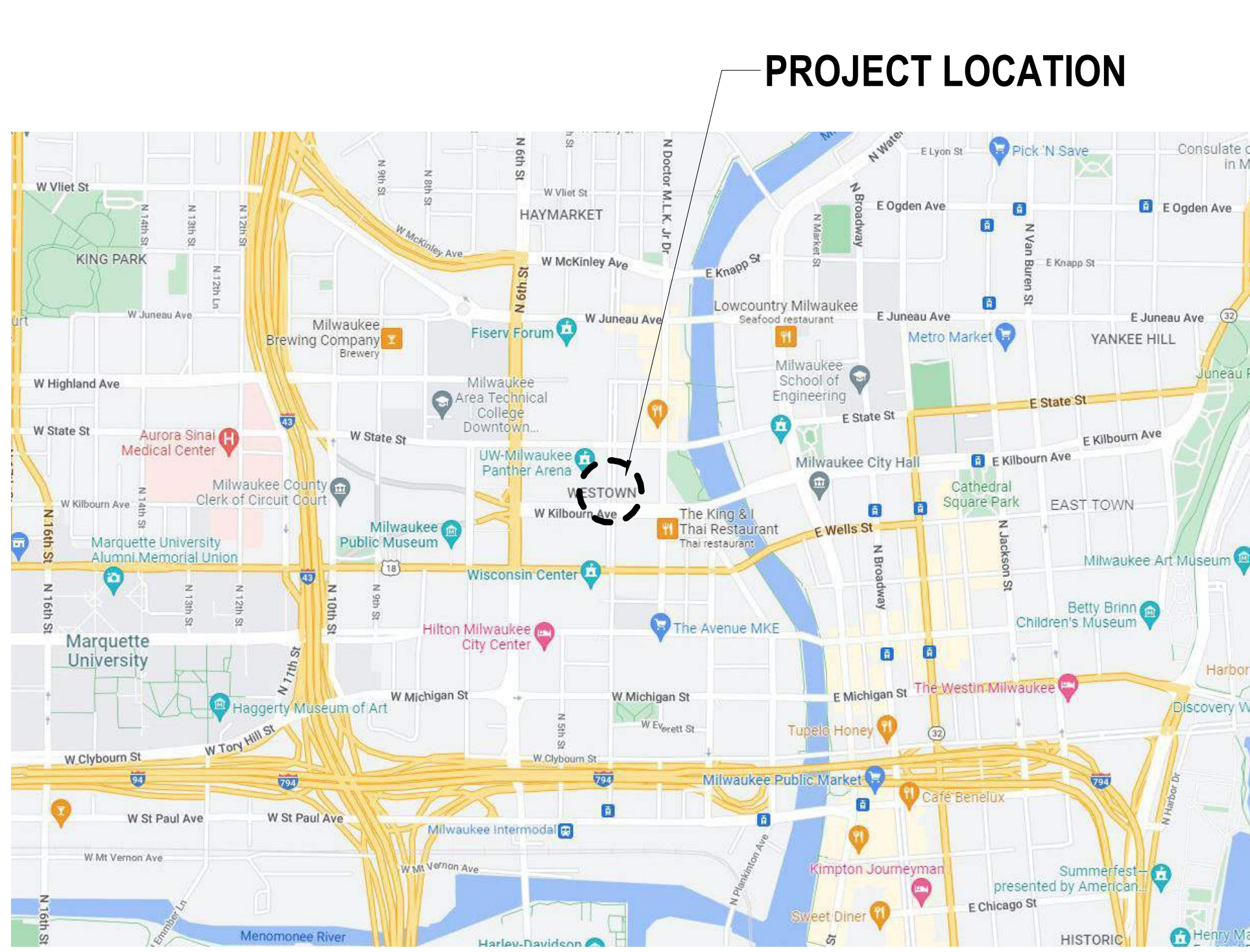
## TAGS



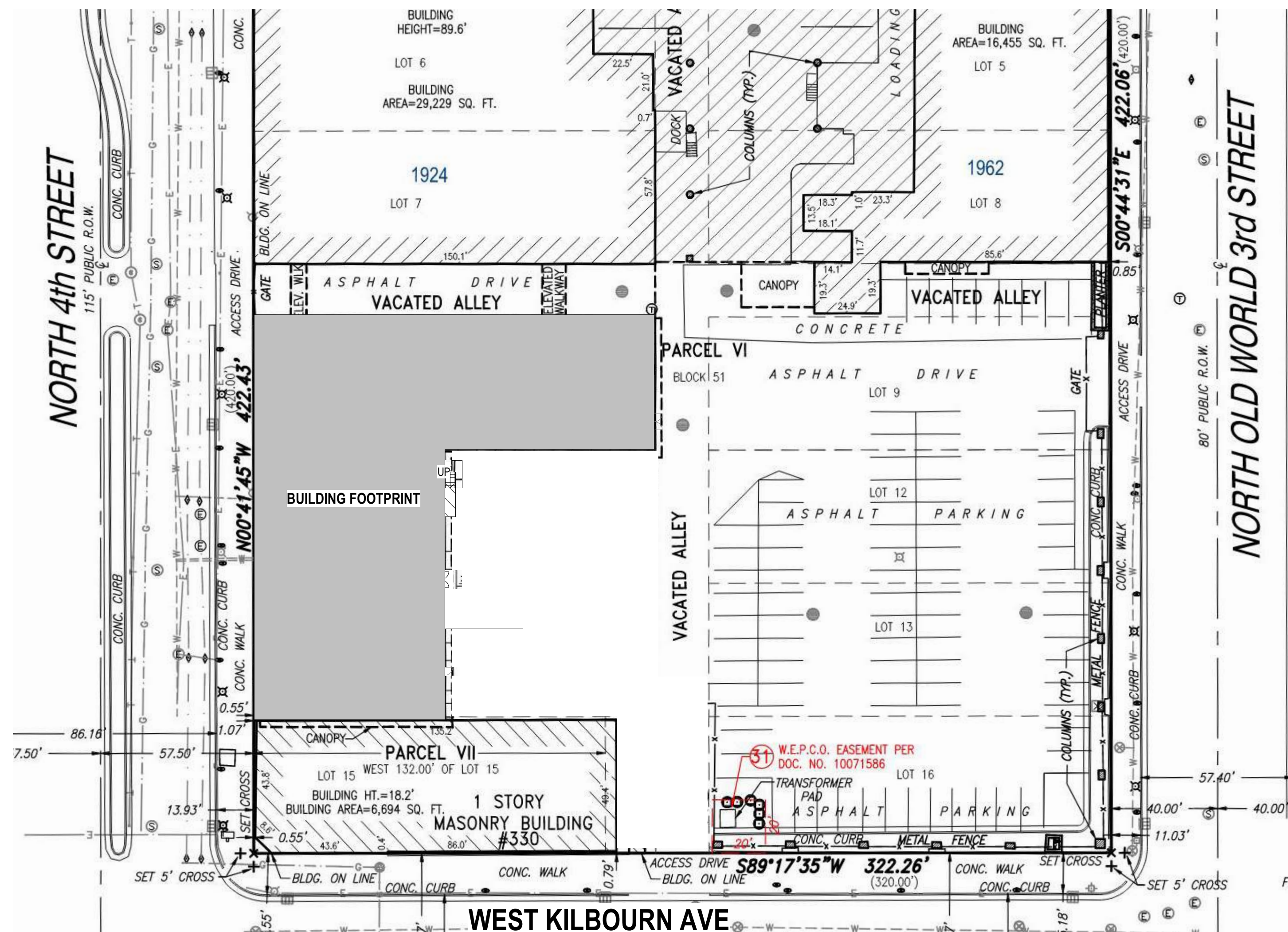
## GRAPHICS



# VICINITY MAP



SITE PLAN  
1/32" = 1'-0"



# PROJECT DATA

<b>OWNER</b>	SEEDS OF HEALTH
<b>LOCATION</b>	MILWAUKEE
<b>COUNTY</b>	MILWAUKEE
<b>STATE</b>	WI
<b>APPLICABLE BUILDING CODES</b>	2015 IBC AS MODIFIED BY CHAPTERS SPS 381-386 MAY 1, 2018
<b>CONSTRUCTION CLASSIFICATION</b>	TYPE (IBC) IIA
<b>OCCUPANCY GROUP</b>	E (EDUCATION)
<b>PRIMARY OCCUPANCIES</b>	A, B, S-1,
<b>ACCESSORY OCCUPANCIES</b>	NONE
<b>INCIDENTAL OCCUPANCIES</b>	NONE
<b>MIXED USE AND OCCUPANCY</b>	NON-SEPARATED OCCUPANCY
<b>PROJECT TYPE</b>	LEVEL ONE ALTERATION
<b>NUMBER OF STORIES</b>	BASEMENT + 4 STORIES
<b>FIRE PROTECTION</b>	COMPLETE
<b>FIRE ALARM</b>	COMPLETE
<b>FIRE SUPPRESSION</b>	COMPLETE
<b>MONITORING TYPE</b>	CENTRAL STATION
<b>NEPA STANDARD USED</b>	NFPA 13

# EXTERIOR LIFE SAFETY NOTES

<b>A</b>	<b>UNPROTECTED OPENING PERCENTAGE IBC 705.8</b> • LOWER LEVEL • TOTAL UNPROTECTED OPENING 188.82 SF • 188.82/77.73 = 24% • FIRE SEPARATION DISTANCE = 10-15 FEET ASSUMED IMAGINARY LOT LINE IN THE MIDDLE OF THE ALLEY • FULLY SPRINKLERED BUILDING • ALLOWABLE UNPROTECTED OPENING = 45%
<b>B</b>	<b>UNPROTECTED OPENING PERCENTAGE IBC 705.8</b> • FIRST FLOOR • TOTAL UNPROTECTED OPENING 575.44 SF • 575.44/180.53 = 32% • FIRE SEPARATION DISTANCE = 10-15 FEET ASSUMED IMAGINARY LOT LINE IN THE MIDDLE OF THE ALLEY • FULLY SPRINKLERED BUILDING • ALLOWABLE UNPROTECTED OPENING = 45%
<b>C</b>	<b>UNPROTECTED OPENING PERCENTAGE IBC 705.8</b> • SECOND LEVEL • TOTAL UNPROTECTED OPENING 566.49 SF • 566.49/180.53 = 31% • FIRE SEPARATION DISTANCE = 10-15 FEET ASSUMED IMAGINARY LOT LINE IN THE MIDDLE OF THE ALLEY • FULLY SPRINKLERED BUILDING • ALLOWABLE UNPROTECTED OPENING = 45%
<b>D</b>	<b>UNPROTECTED OPENING PERCENTAGE IBC 705.8</b> • THIRD LEVEL • TOTAL UNPROTECTED OPENING 566.49 SF • 566.49/180.53 = 31% • FIRE SEPARATION DISTANCE = 10-15 FEET ASSUMED IMAGINARY LOT LINE IN THE MIDDLE OF THE ALLEY • FULLY SPRINKLERED BUILDING • ALLOWABLE UNPROTECTED OPENING = 45%
<b>E</b>	<b>UNPROTECTED OPENING PERCENTAGE IBC 705.8</b> • FOURTH LEVEL • TOTAL UNPROTECTED OPENING 575.44 SF • 575.44/180.53 = 32% • FIRE SEPARATION DISTANCE = 10-15 FEET ASSUMED IMAGINARY LOT LINE IN THE MIDDLE OF THE ALLEY • FULLY SPRINKLERED BUILDING • ALLOWABLE UNPROTECTED OPENING = 45%

# PROJECT INFORMATION

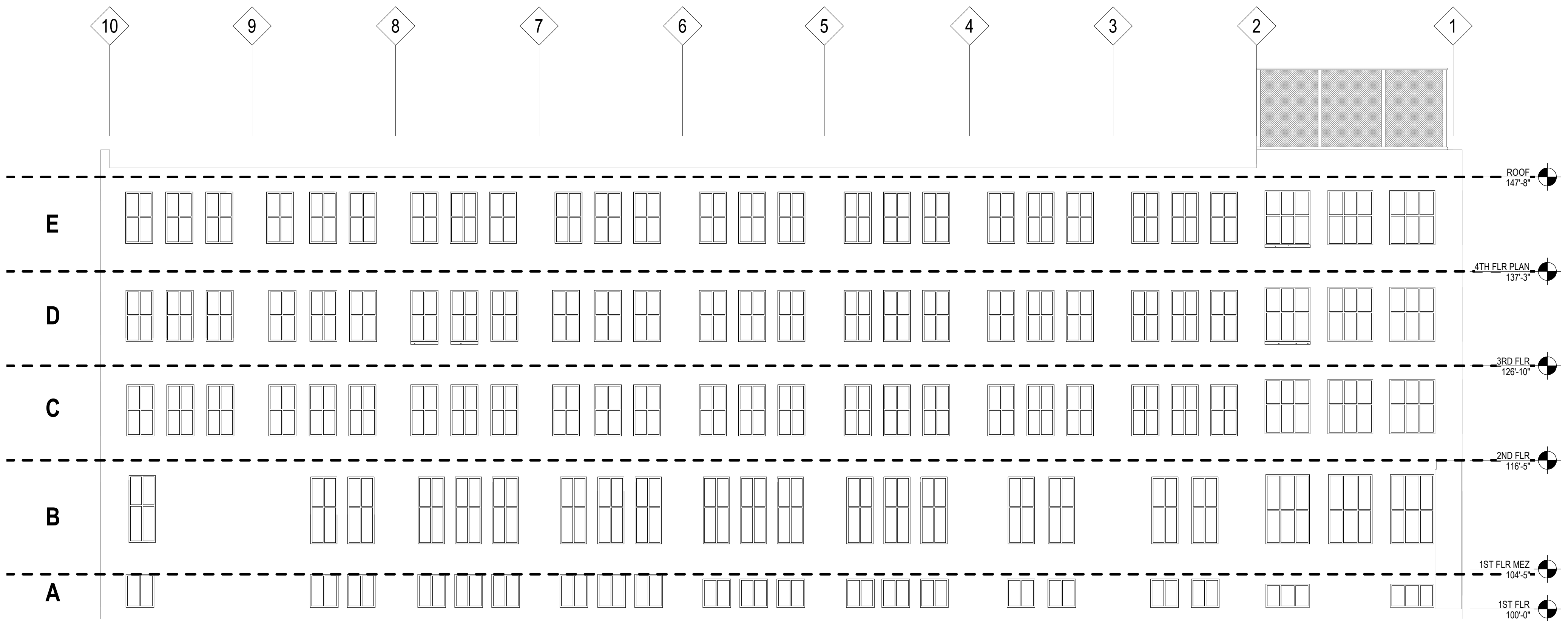
## SEEDS OF HEALTH - HIGH SCHOOL EXTERIOR BUILDING IMPROVEMENTS

918 VEL R. PHILLIPS AVE  
MILWAUKEE, WI 53203

# ISSUANCE AND REVISIONS

DATE	DESCRIPTION
01/10/2021	IFC APPROVAL
05/23/2022	CONSTRUCTION DOCUMENTS
06/17/2022	COA AMENDMENT

# KEY PLAN



NORTH ELEVATION - LIFE SAFETY  
1/8" = 1'-0"

# SHEET INFORMATION

PROJECT MANAGER MS  
PROJECT NUMBER 319396-02

# INDEX AND LIFE SAFETY ELEVATIONS

# G101

1

2

3

4

5

6

7



milwaukee 333 East Chicago Street  
Milwaukee, Wisconsin 53202  
414.271.5350

madison 309 West Johnson Street, Suite 202  
Madison, Wisconsin 53703  
608.442.2550

denver 1899 Wynkoop Street, Suite 300  
Denver, Colorado 80202  
303.595.4500

PROJECT INFORMATION

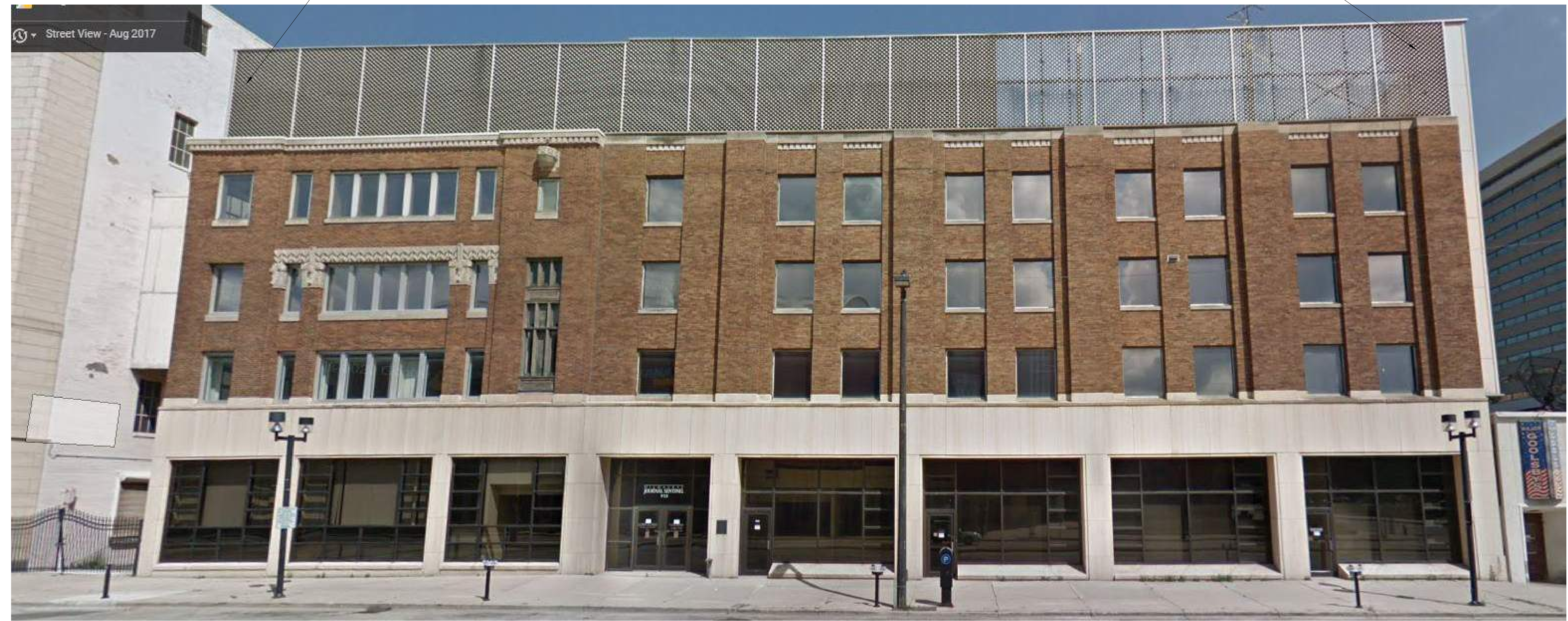
**SEEDS OF HEALTH -  
HIGH SCHOOL  
EXTERIOR BUILDING  
IMPROVEMENTS**

D 918 VEL R. PHILLIPS  
AVE  
MILWAUKEE, WI  
53203

ISSUANCE AND REVISIONS

DATE	DESCRIPTION
01/10/2021	IFC APPROVAL
05/23/2022	CONSTRUCTION DOCUMENTS
06/17/2022	COA AMENDMENT

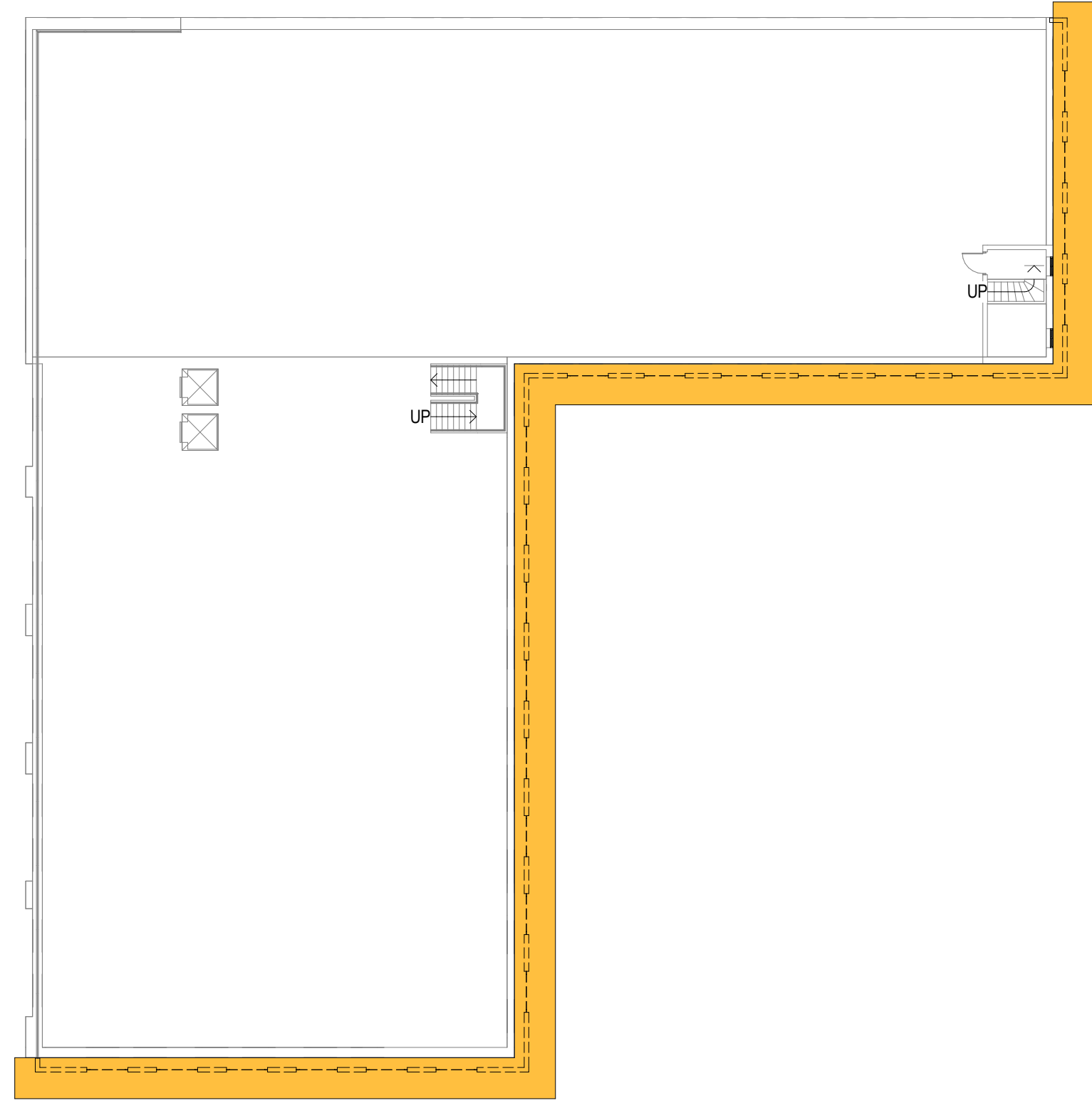
SCREEN TO REMAIN ALONG WEST ELEVATION



CURRENT WEST ELEVATION

E

D



C

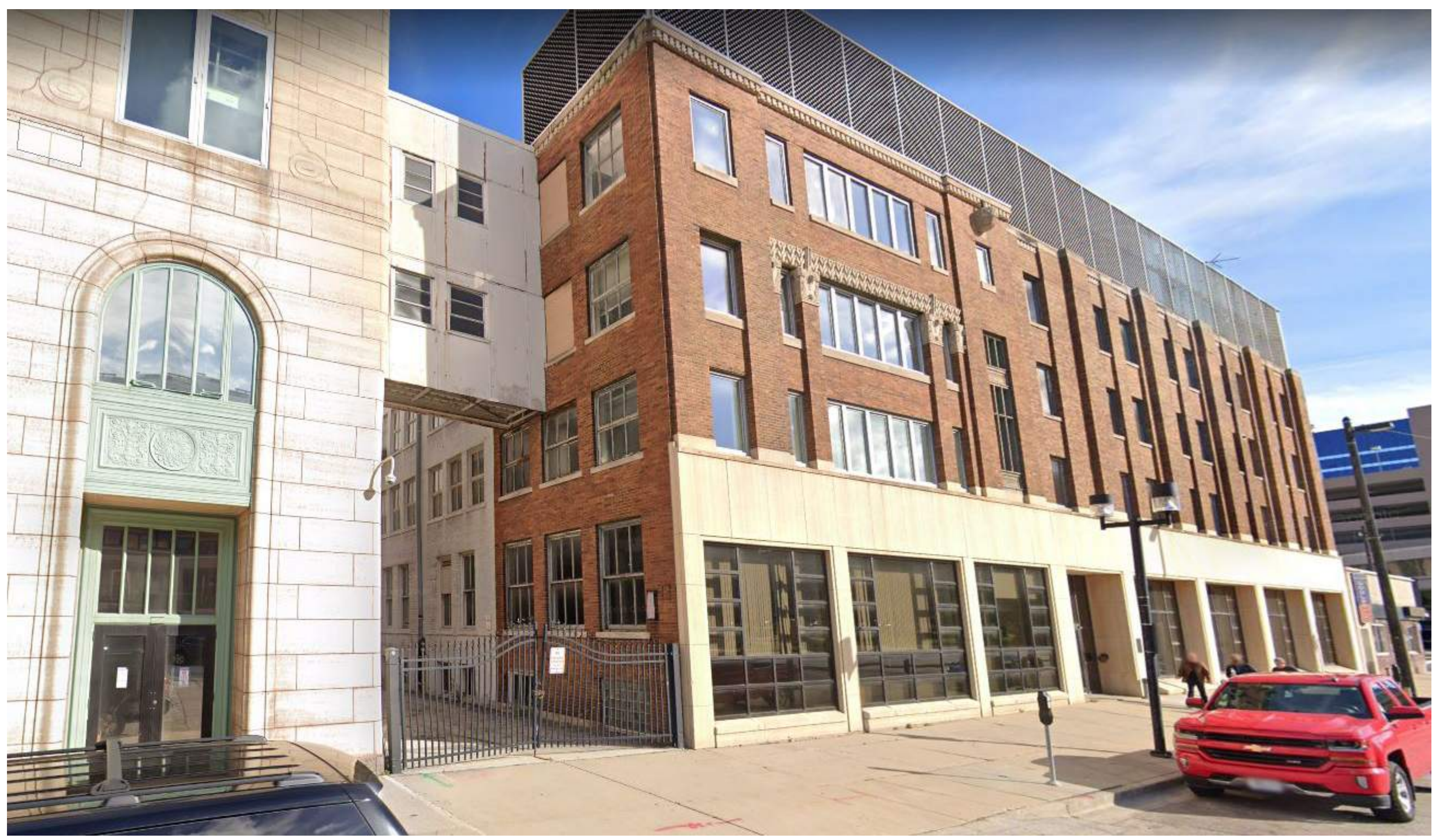
REMOVE METAL SCREEN ALONG  
SOUTH AND EAST ELEVATIONS,  
SEE PLAN ABOVE



CURRENT SOUTH AERIAL

B

A



CURRENT NORTH WEST STREET VIEW

A

C

B

KEY PLAN

SHEET INFORMATION

PROJECT MANAGER MS

PROJECT NUMBER 319396-02

EXTERIOR ELEVATIONS

A200

© 2020 Epstein Uhen Architects, Inc.

1

2

3

4

5

6

7

1

2

3

4

5

6

7



BRICK REPLACEMENT



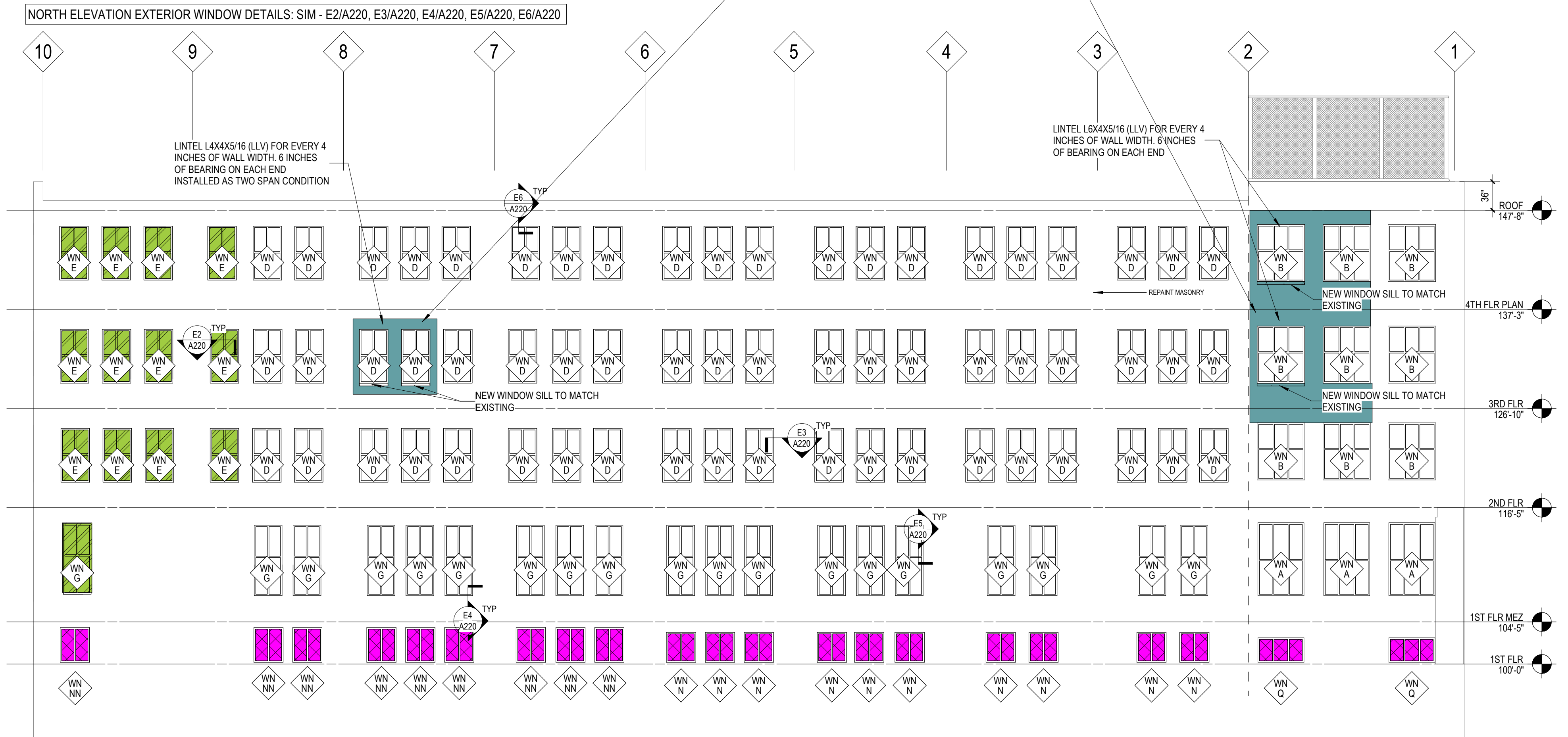
NORTH-EAST SKYBRIDGE INFILL

REPAINT EXISTING BRICK ALONG NORTH, EAST, AND SOUTH ELVATIONS  
COLOR SELECTED:  
SHERWIN WILLIAMS SW 7038, TONY TAUPE

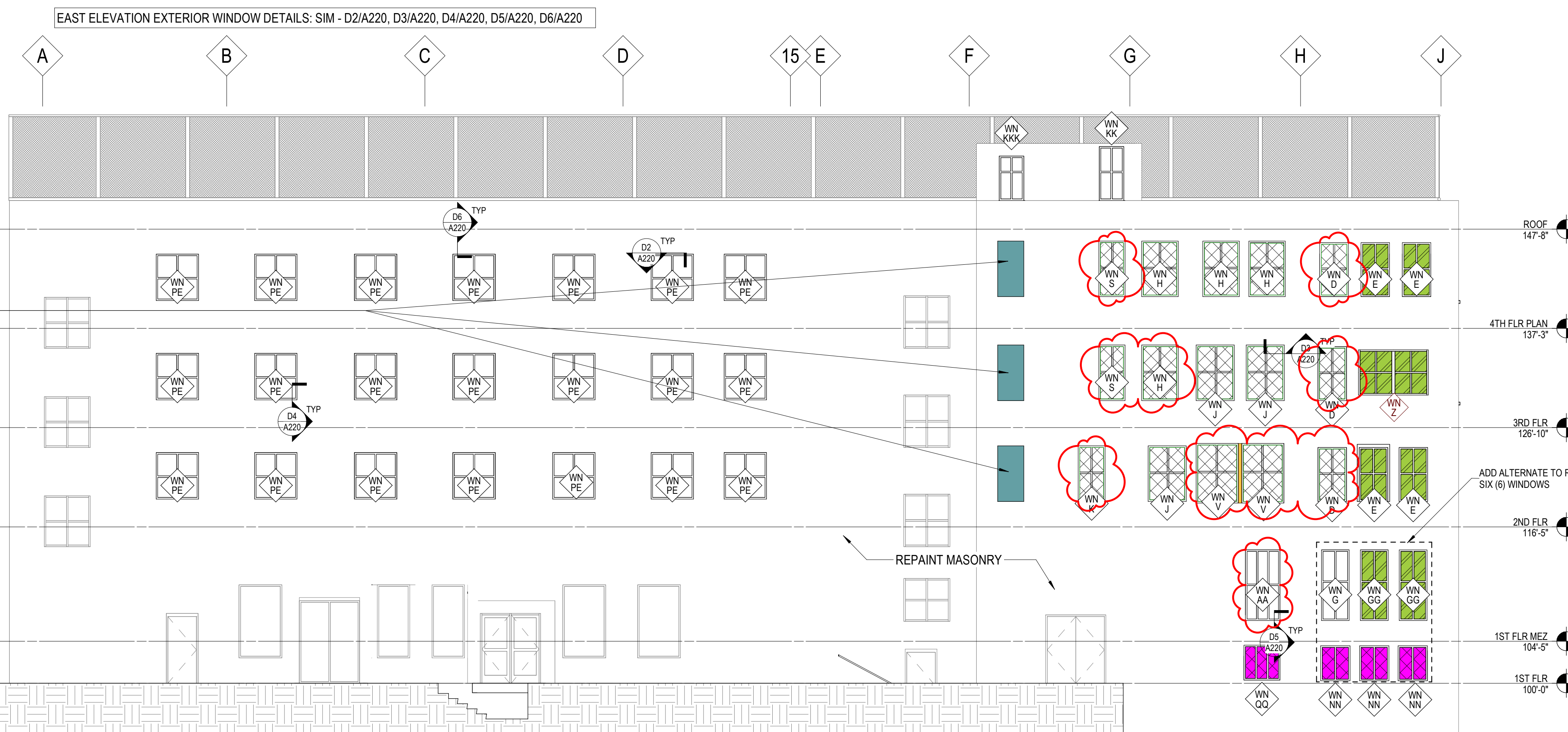
REMOVE FILLED IN NON-MATCHING MASONRY AND INFILL OPENING CONSTRUCTION TO MATCH ADJACENT MATERIALS AND ASSEMBLY

KEY

- HATCH GLASS TYPE IG-6T
- INFILL OPENING CONSTRUCTION TO MATCH ADJACENT MATERIALS AND ASSEMBLY
- METAL COMPOSITE INFILL PANEL, FLAT PROFILE
- ALUMINUM TRIM TO MATCH WINDOW FRAME COLOR
- GLASS TYPE IG-6
- SPANDREL PANEL
- HATCH GLASS TYPE IG-2T
- EXISTING CONCRETE HAUNCHES



C3 NORTH  
1/8" = 1'-0"



A3 EAST  
1/8" = 1'-0"

REMOVE EXISTING WINDOW AND INFILL THE OPENINGS WITH MASONRY TO MATCH THE EXISTING ADJACENT MASONRY

REPAINT MASONRY



EXISTING EAST ELEVATION



milwaukee 333 East Chicago Street  
Milwaukee, Wisconsin 53202  
414.271.5350

madison 309 West Johnson Street, Suite 202  
Madison, Wisconsin 53703  
608.442.2550

denver 1899 Wynkoop Street, Suite 300  
Denver, Colorado 80202  
303.556.4500

PROJECT INFORMATION

**SEEDS OF HEALTH - HIGH SCHOOL EXTERIOR BUILDING IMPROVEMENTS**

918 VEL R. PHILLIPS AVE  
MILWAUKEE, WI 53203

ISSUANCE AND REVISIONS

DATE	DESCRIPTION
01/10/2021	IFPC APPROVAL
05/23/2022	CONSTRUCTION DOCUMENTS
06/08/2022	CB 01
06/17/2022	CB 02
06/17/2022	COA AMENDMENT
06/30/2022	HISTORICAL COA APPLICATION
07/06/2022	COA AMENDMENT

KEY PLAN

SHEET INFORMATION

PROJECT MANAGER MS

PROJECT NUMBER 319396-02

EXTERIOR ELEVATIONS

A201

© 2020 Epstein Uhen Architects, Inc.



milwaukee 333 East Chicago Street  
Milwaukee, Wisconsin 53202  
414.271.5350

madison 309 West Johnson Street, Suite 202  
Madison, Wisconsin 53703  
608.442.5350

denver 1899 Wynkoop Street, Suite 300  
Denver, Colorado 80202  
303.595.4500

PROJECT INFORMATION

**SEEDS OF HEALTH -  
HIGH SCHOOL  
EXTERIOR BUILDING  
IMPROVEMENTS**

D 918 VEL R. PHILLIPS  
AVE  
MILWAUKEE, WI  
53203

ISSUANCE AND REVISIONS

DATE	DESCRIPTION
01/10/2021	HPC APPROVAL
05/23/2022	CONSTRUCTION DOCUMENTS
06/08/2022	CB 01
06/17/2022	CB 02
06/17/2022	COA AMENDMENT
06/30/2022	HISTORICAL COA APPLICATION

KEY PLAN

SHEET INFORMATION

PROJECT MANAGER MS

PROJECT NUMBER 319396-02

EXTERIOR  
ELEVATIONS

**A202**

© 2020 Epstein Uhen Architects, Inc.

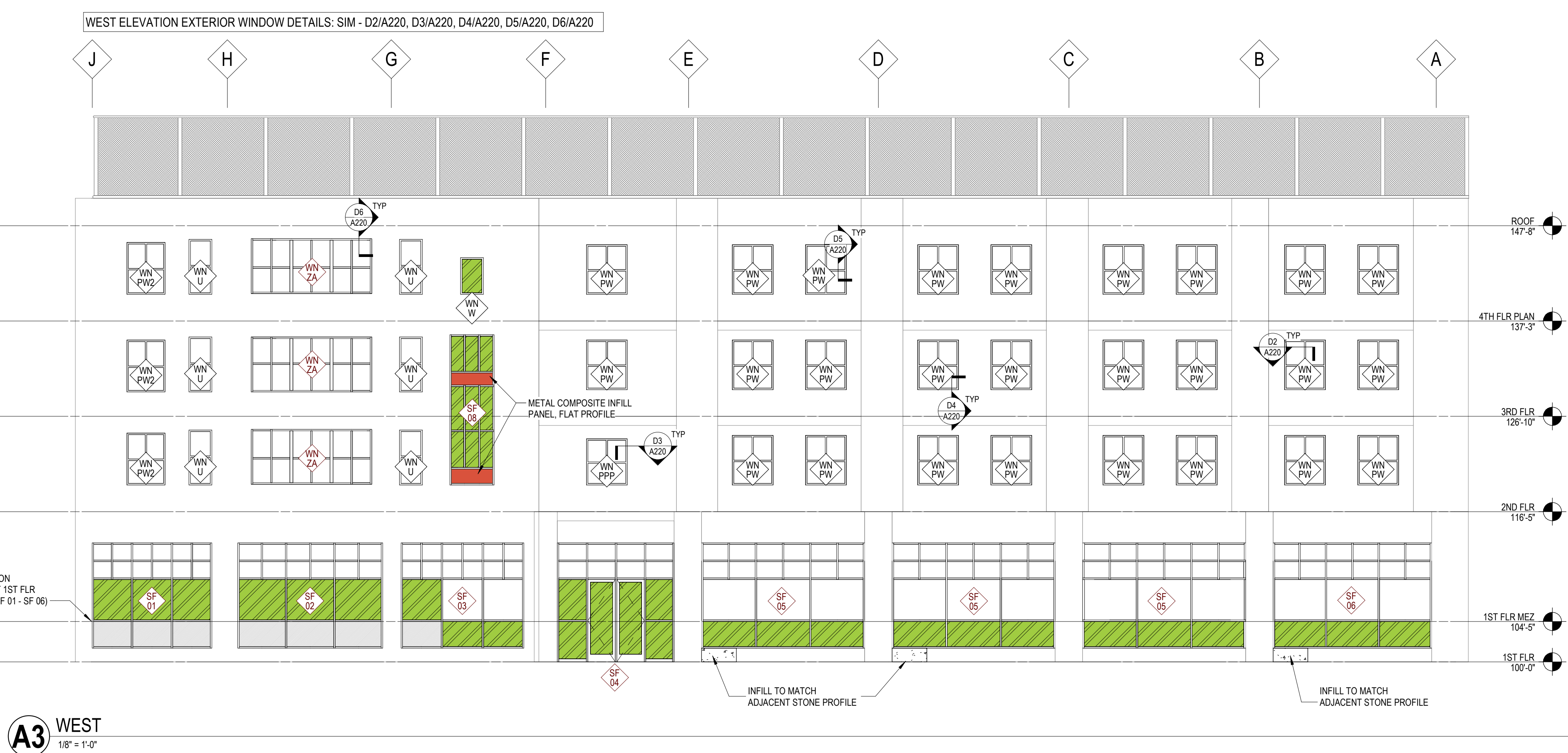
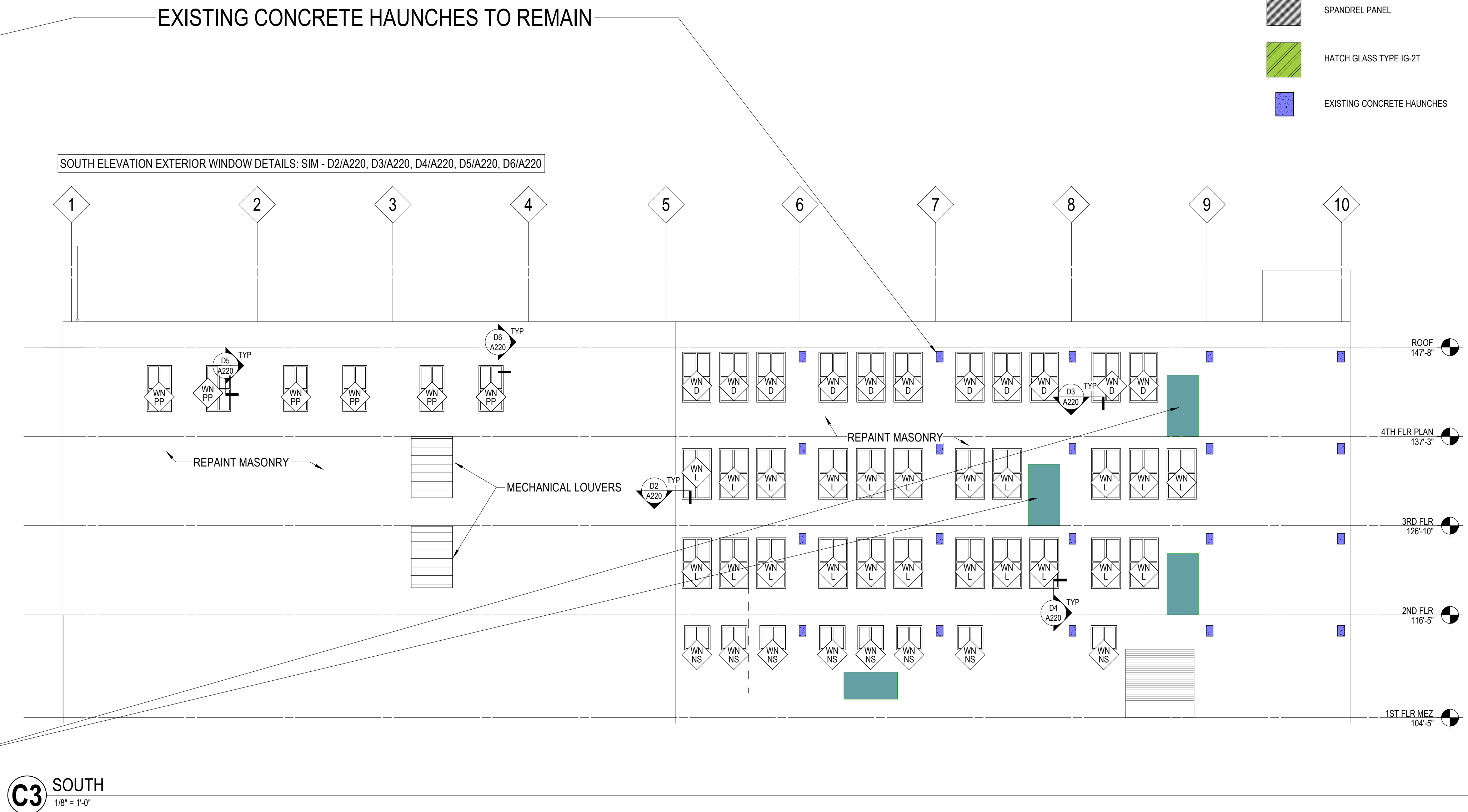


**CONCRETE HAUNCH**

REMOVE EXISTING DOORS AND INFILL THE  
OPENINGS WITH MASONRY TO MATCH THE  
EXISTING ADJACENT MASONRY



**EXISTING SOUTH ELEVATION**





milwaukee 333 East Chicago Street  
Milwaukee, Wisconsin 53202  
414.271.5350

madison 309 West Johnson Street, Suite 202  
Madison, Wisconsin 53703  
608.442.2550

denver 1899 Wynkoop Street, Suite 300  
Denver, Colorado 80202  
303.556.4500

**WINDOW FRAME NOTES**

**1. GENERAL NOTES**  
1A. ALL OPENING DIMENSIONS TO BE FIELD VERIFIED. DIMENSIONS ARE SHOWN FOR INFORMATION ONLY AND MUST BE CONFIRMED PRIOR TO WINDOW FABRICATION.  
1B. PROVIDE NEW ROLLER SHADES AT EACH WINDOW.  
1C. SINGLE HUNG WINDOW BASIS OF DESIGN, QUAKER H650  
1D. STOREFRONT SYSTEM BASIS OF DESIGN, KAWNEER 461T

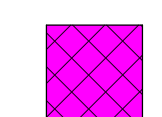
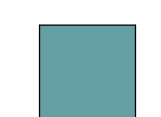
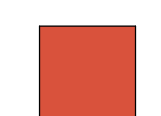
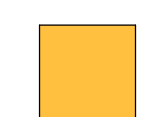
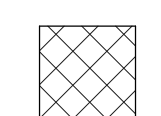
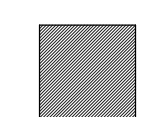
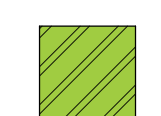
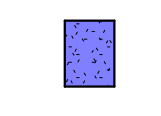
**2. FRAME NOTES**  
2A. DARK BRONZE COLOR FOR ALL NEW EXTERIOR FRAMES  
2B. ALL FRAMES TO BE EXTERIOR ALUMINUM STOREFRONT WINDOW SYSTEM WITH 2" X 4 1/2" MILLION PROFILE UNLESS NOTED OR DIMENSIONED OTHERWISE.

**3. GLAZING NOTES**  
3A. ALL GLAZING IN EXTERIOR FRAMES TO BE IG-1 UNLESS NOTED OTHERWISE.  
3B. WINDOWS IN RESTROOMS TO HAVE GLASS TYPE IG-6

**GLAZING SCHEDULE**

IG-1 INSULATING GLASS, CLEAR, LOW-E, ARGONG FILLED, 1" THICK  
IG-2T INSULATING GLASS, CLEAR, LOW-E, ARGONG FILLED, FULLY TEMPERED, 1" THICK  
IG-6 INSULATING GLASS, TRANSLUCENT FROSTED, LOW-E, ARGONG FILLED, 1" THICK  
IG-6T INSULATING GLASS, TRANSLUCENT FROSTED, LOW-E, ARGONG FILLED, FULLY TEMPERED, 1" THICK

**KEY**

-  HATCH GLASS TYPE IG-6T
-  INFILL OPENING, CONSTRUCTION TO MATCH ADJACENT MATERIALS AND ASSEMBLY
-  METAL COMPOSITE INFILL PANEL, FLAT PROFILE
-  ALUMINUM TRIM TO MATCH WINDOW FRAME COLOR
-  GLASS TYPE IG-6
-  SPANDREL PANEL
-  HATCH GLASS TYPE IG-2T
-  EXISTING CONCRETE HAUNCHES

**PROJECT INFORMATION**

**SEEDS OF HEALTH - HIGH SCHOOL EXTERIOR BUILDING IMPROVEMENTS**

**D 918 VEL R. PHILLIPS AVE MILWAUKEE, WI 53203**

**ISSUANCE AND REVISIONS**

DATE	DESCRIPTION
01/10/2021	IFPC APPROVAL
05/23/2022	CONSTRUCTION DOCUMENTS
06/08/2022	CB 01
06/17/2022	COA AMENDMENT

**KEY PLAN**

**SHEET INFORMATION**

PROJECT MANAGER MS  
PROJECT NUMBER 319396-02

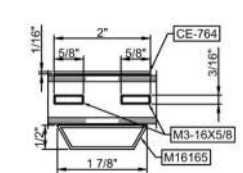
**EXTERIOR FRAME TYPES & EXTERIOR DETAILS**

**A220**

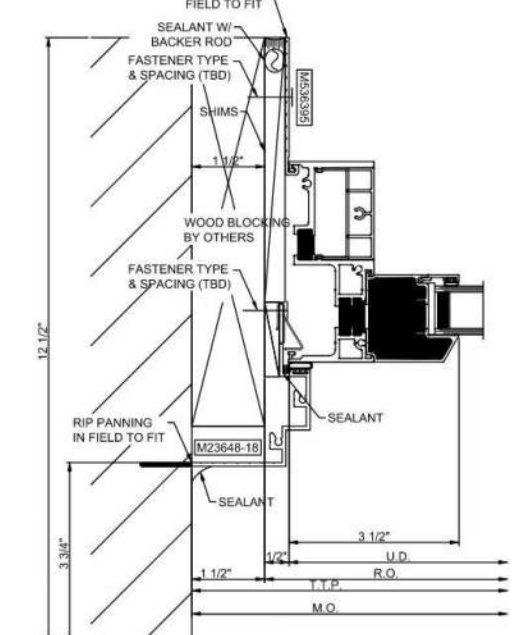
© 2020 Epstein Uhen Architects, Inc.

1 2 3 4 5 6 7

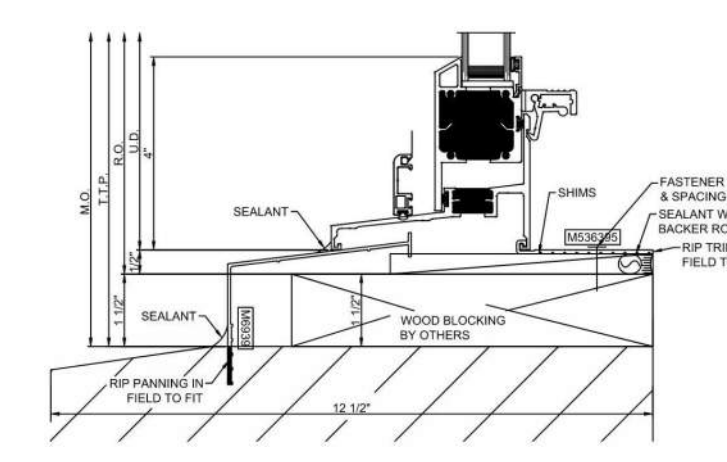
E



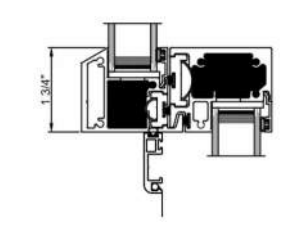
**E2** C1 - WINDOW MULLION (PLAN VIEW)  
3" = 1'-0"



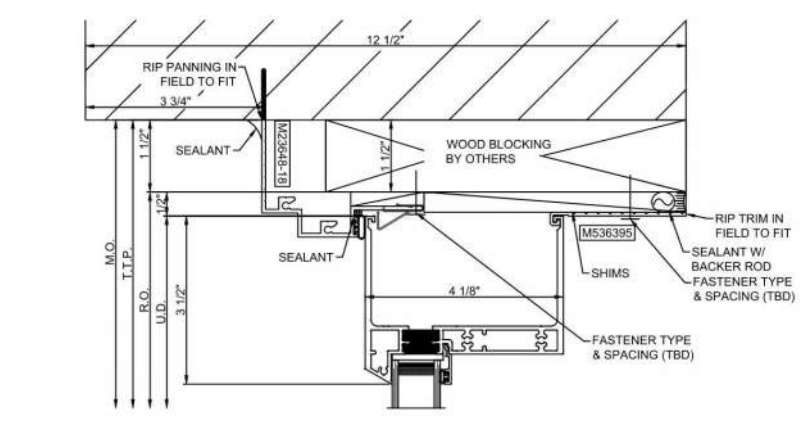
**E3** C1 - WINDOW JAMB  
3" = 1'-0"



**E4** C1 - WINDOW SILL  
3" = 1'-0"

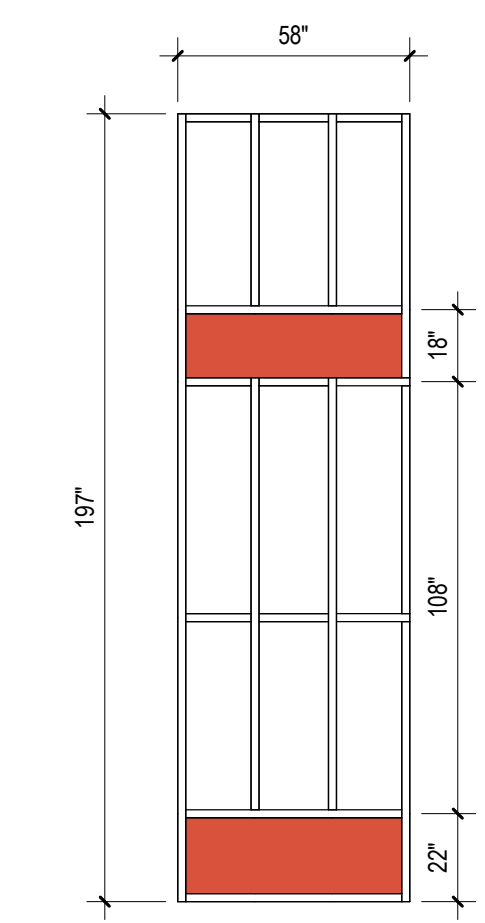


**E5** C1 - WINDOW MULLION (SECTION)  
3" = 1'-0"

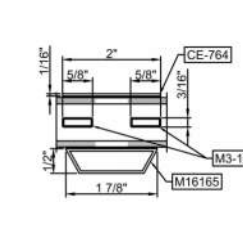


**E6** C1 - WINDOW HEAD  
3" = 1'-0"

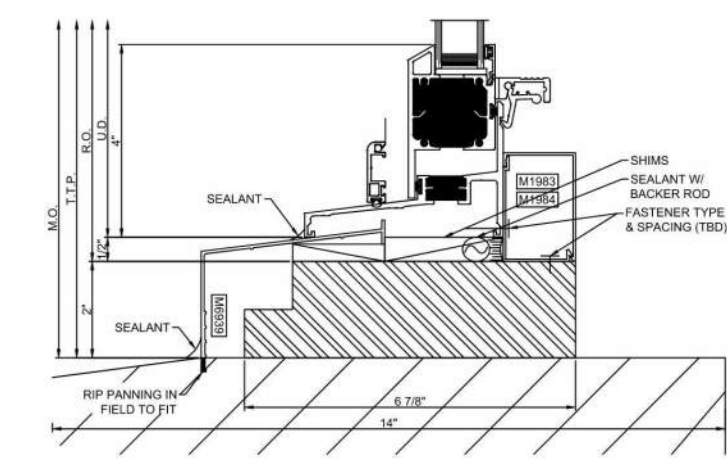
D



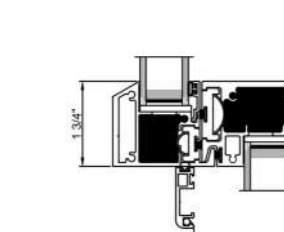
**D2** C2 - WINDOW MULLION (PLAN VIEW)  
3" = 1'-0"



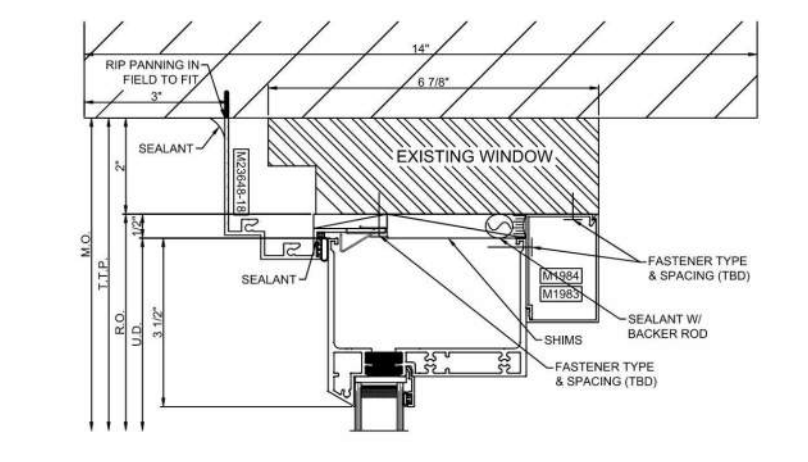
**D3** C2 - WINDOW JAMB  
3" = 1'-0"



**D4** C2 - WINDOW SILL  
3" = 1'-0"



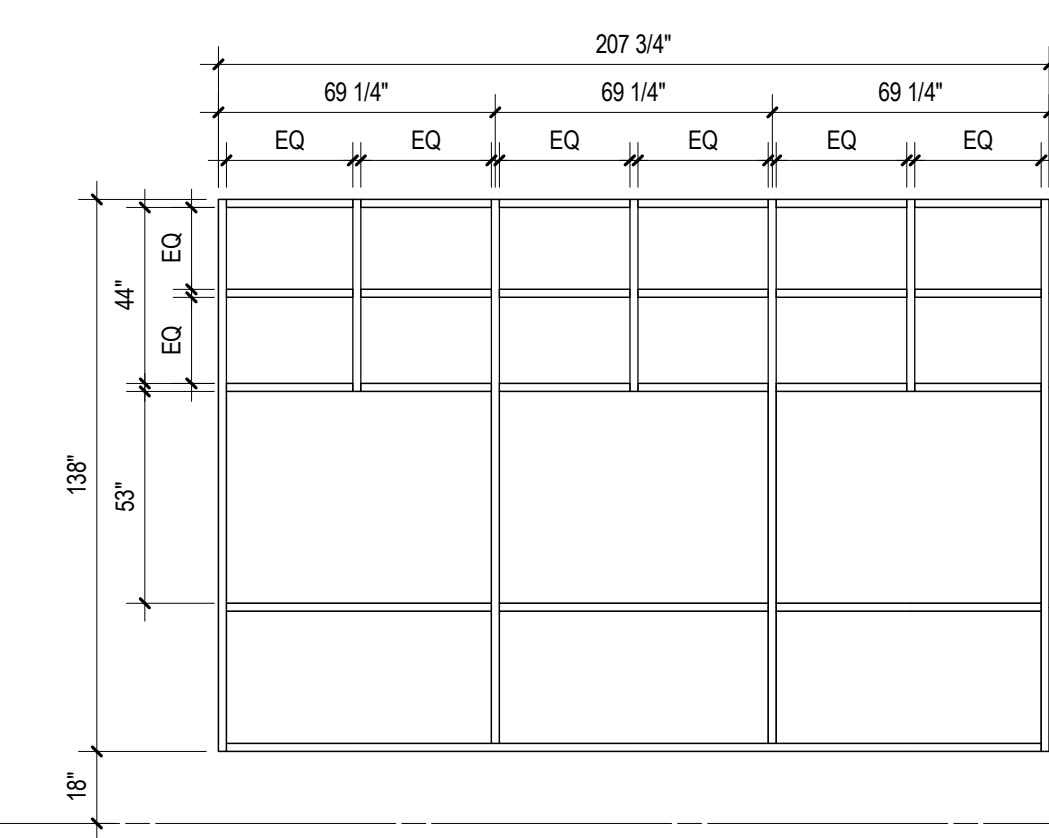
**D5** C2 - WINDOW MULLION (SECTION)  
3" = 1'-0"



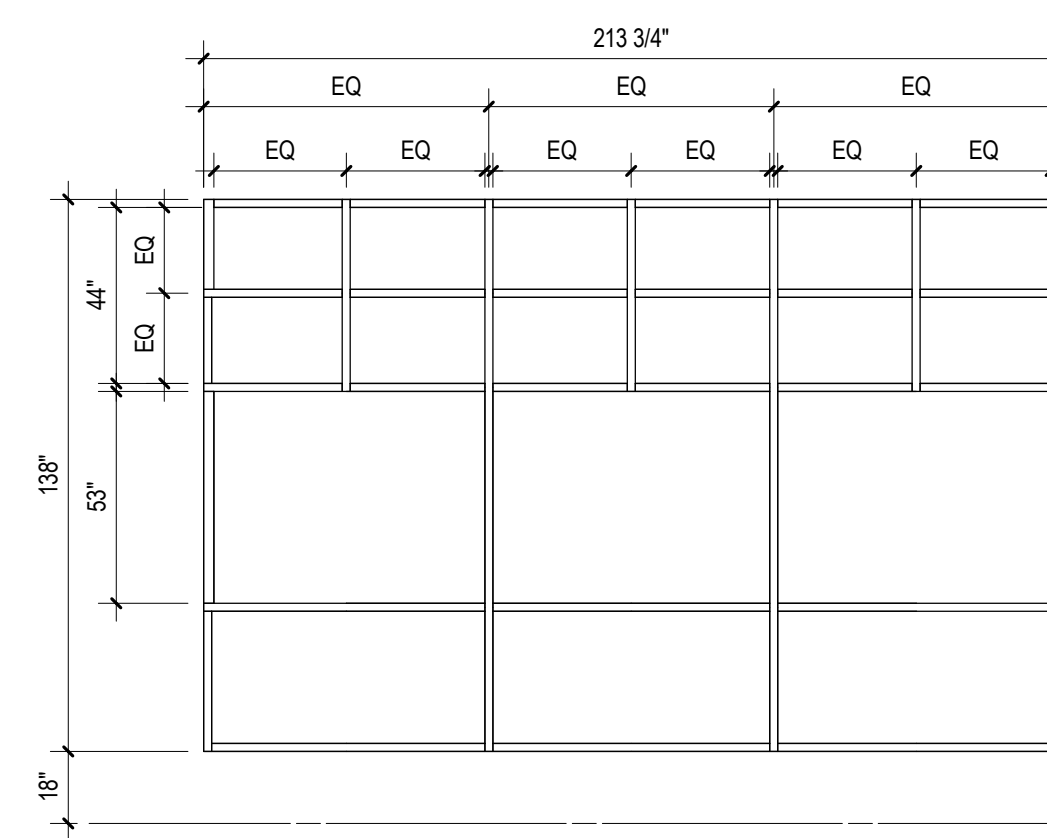
**D6** C2 - WINDOW HEAD  
3" = 1'-0"

**STOREFRONT - 07**

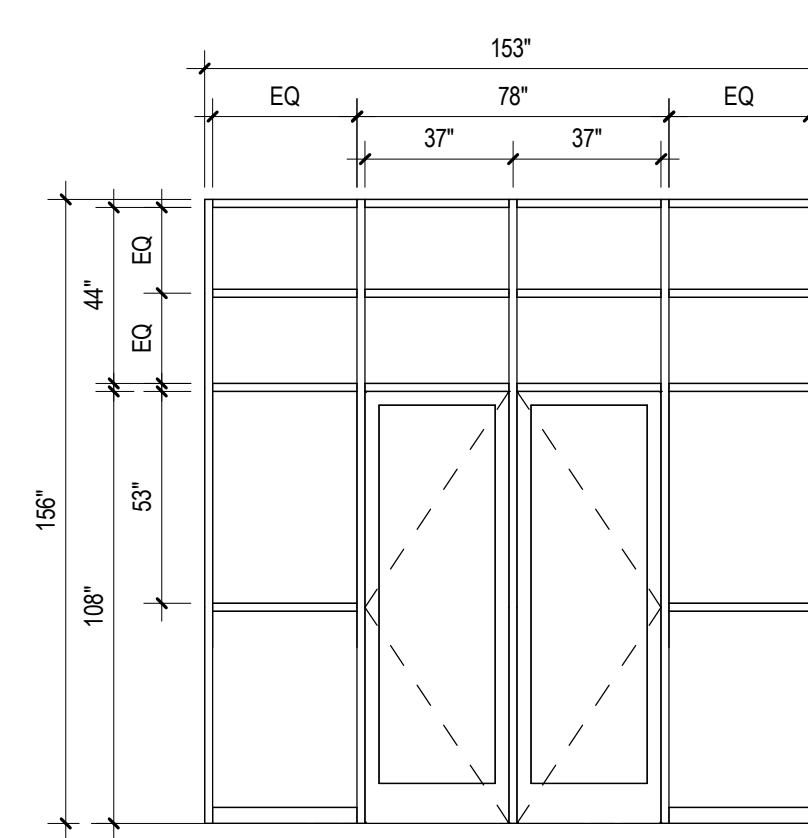
C



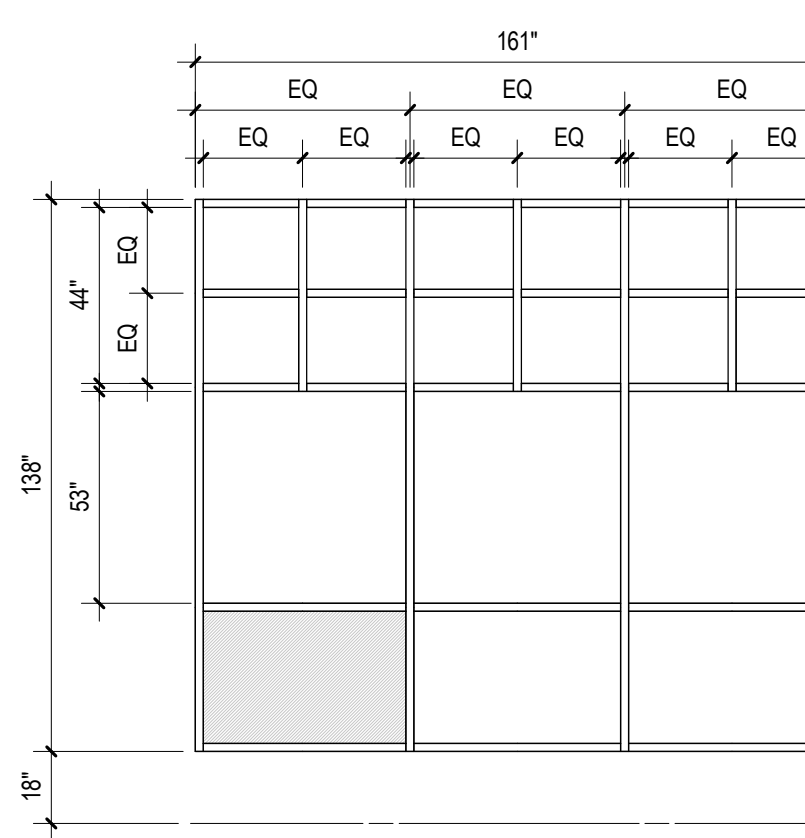
**STOREFRONT - 06**



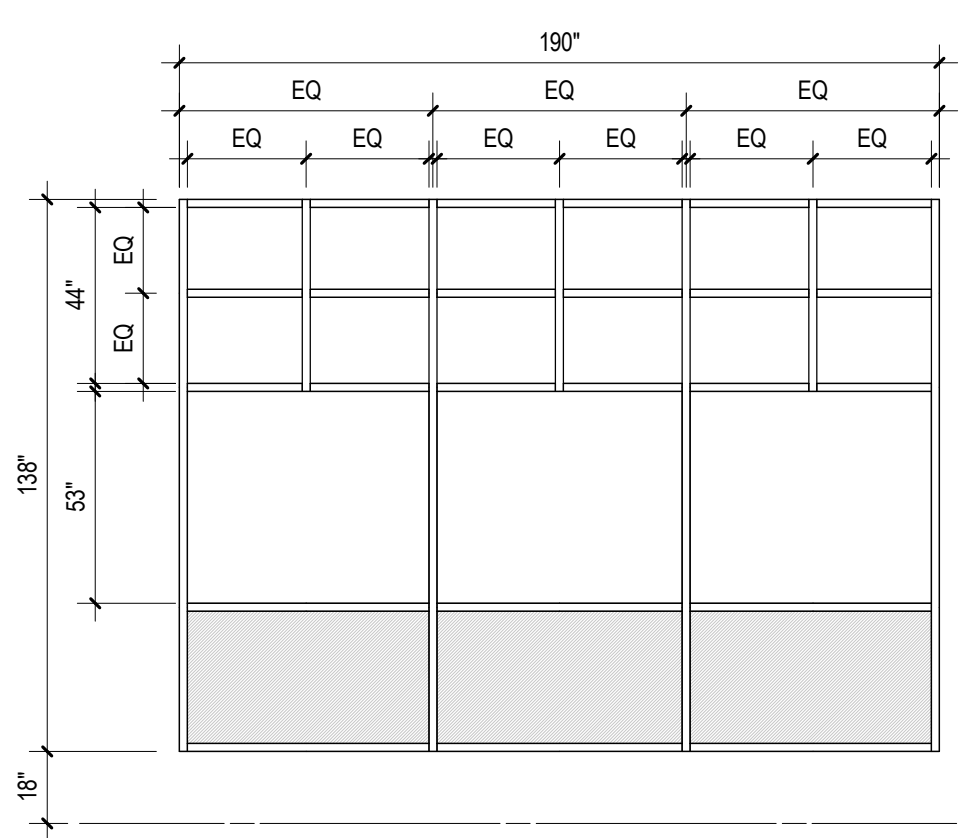
**STOREFRONT - 05**



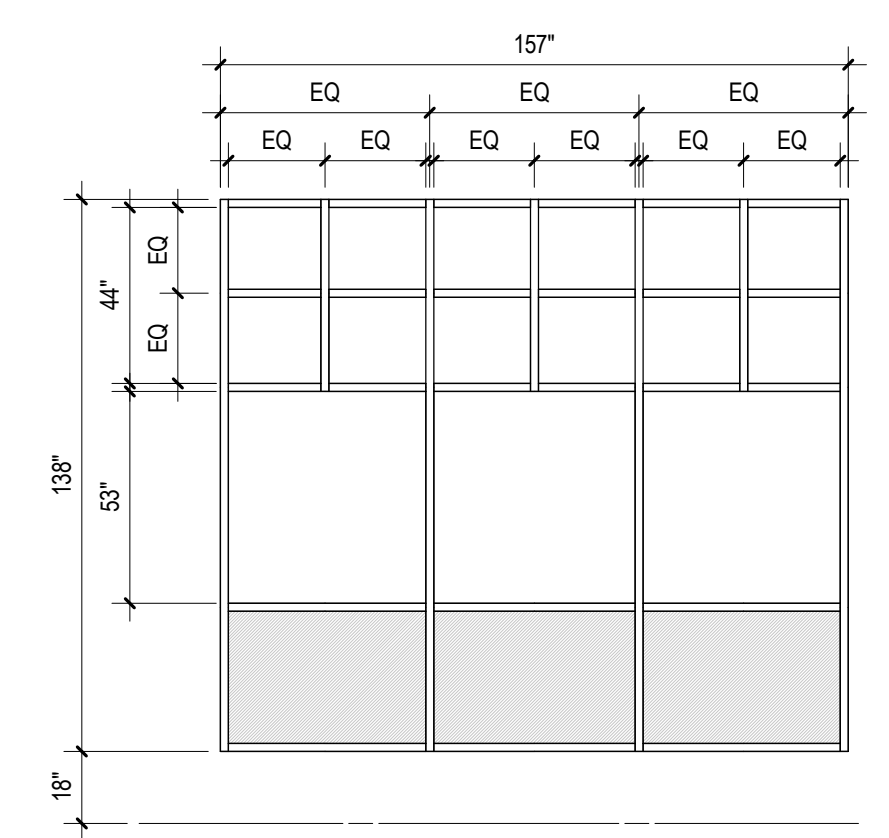
**STOREFRONT - 04**



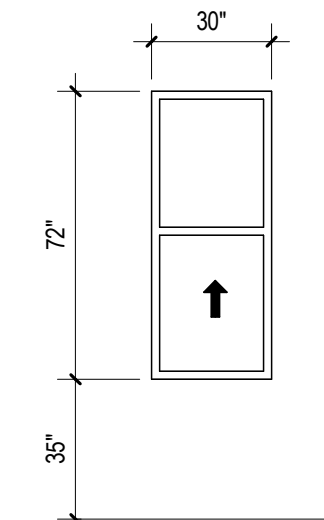
**STOREFRONT - 03**



**STOREFRONT - 02**

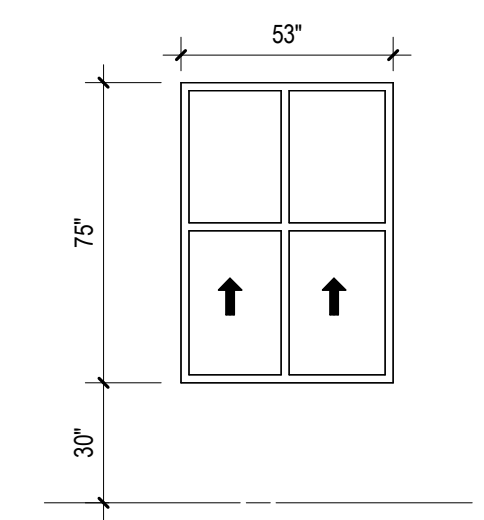


**STOREFRONT - 01**

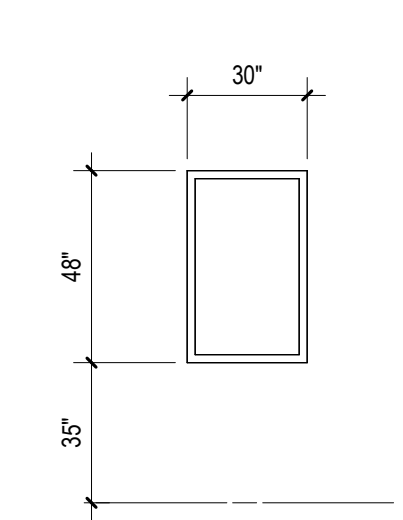


**TYPE U**

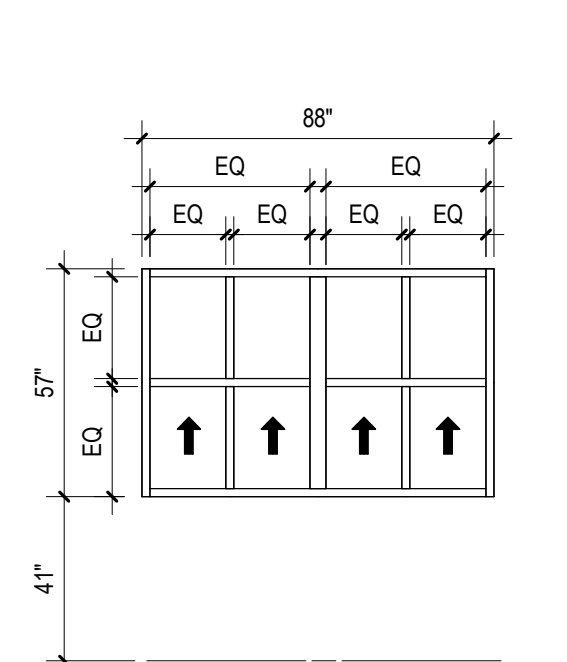
B



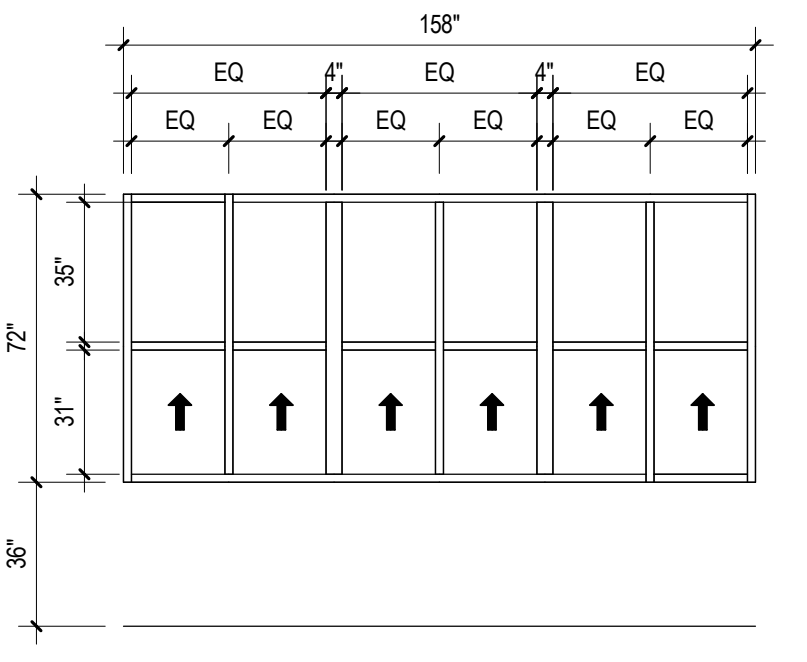
**TYPE V**



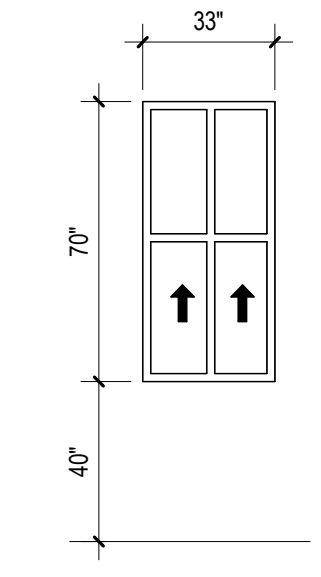
**TYPE W**



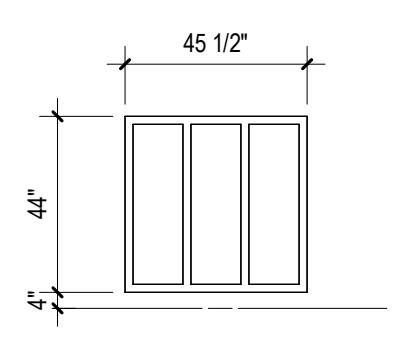
**TYPE Z**



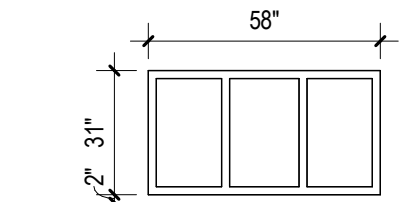
**TYPE ZA**



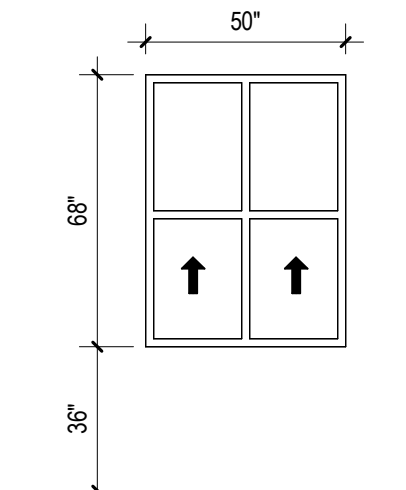
**TYPE S**



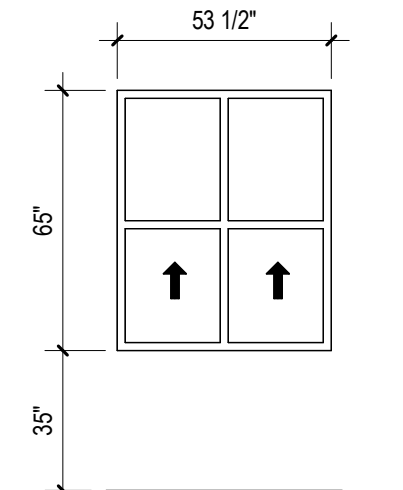
**TYPE QQ**



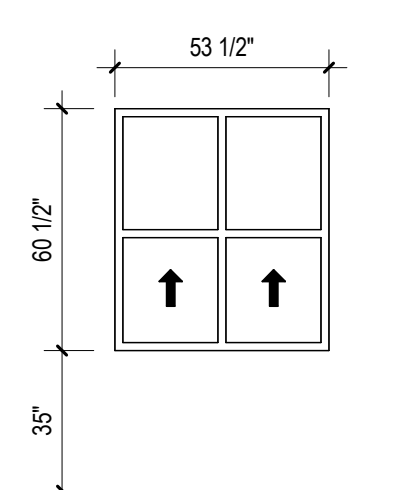
**TYPE Q**



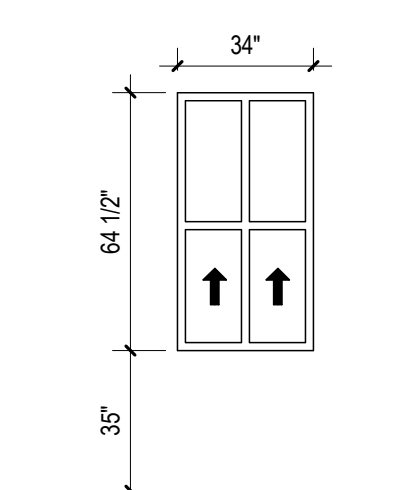
**TYPE PW2**



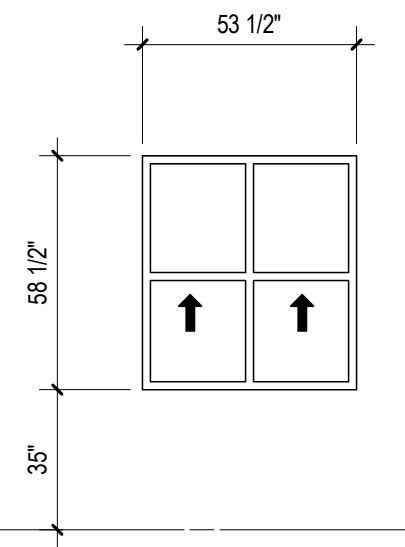
**TYPE PW**



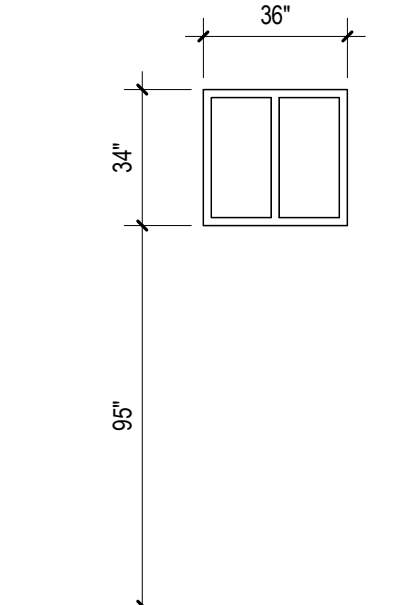
**TYPE PPP**



**TYPE PP**

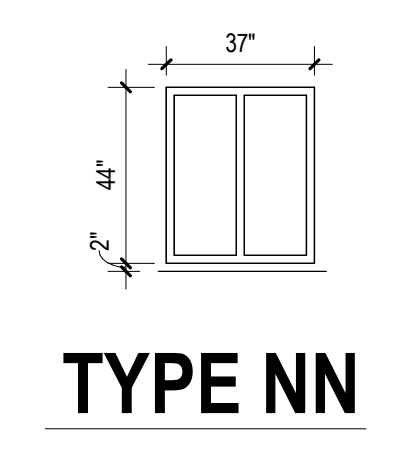


**TYPE PE**

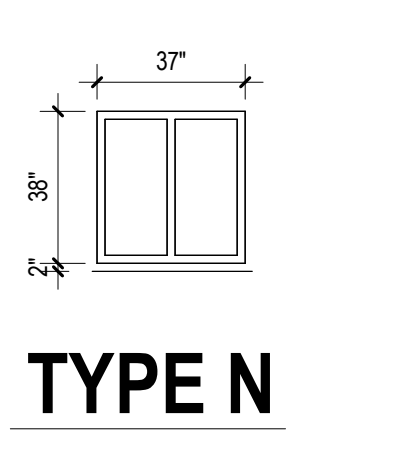


**TYPE NS**

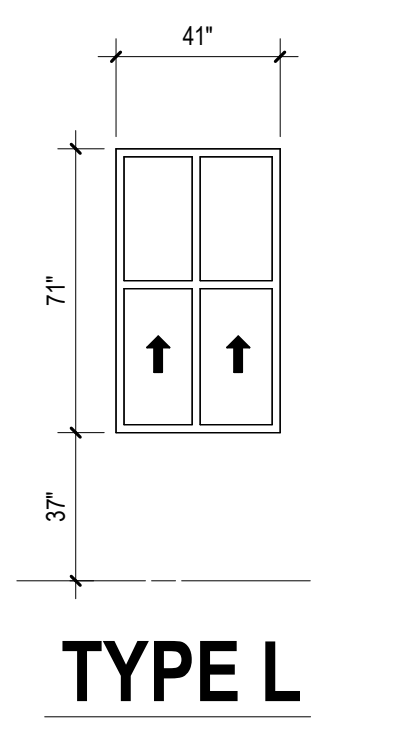
A



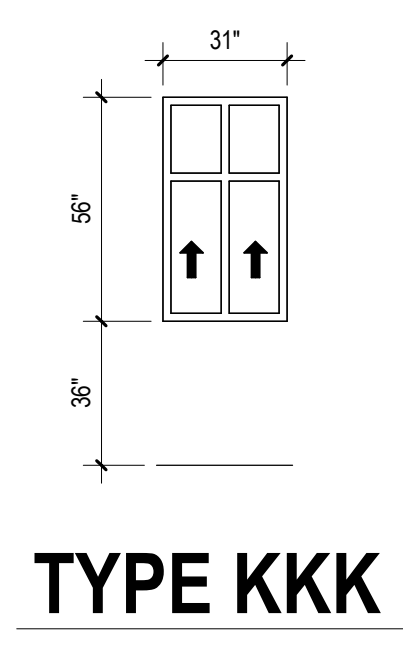
**TYPE NN**



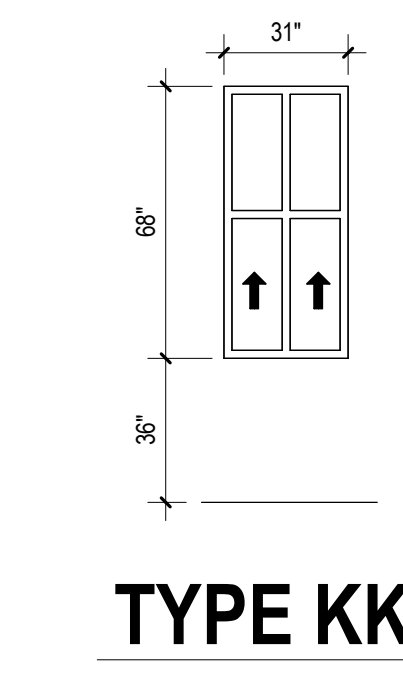
**TYPE N**



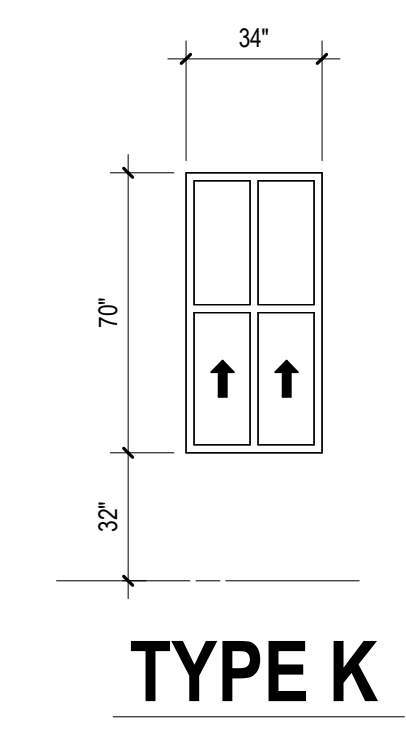
**TYPE L**



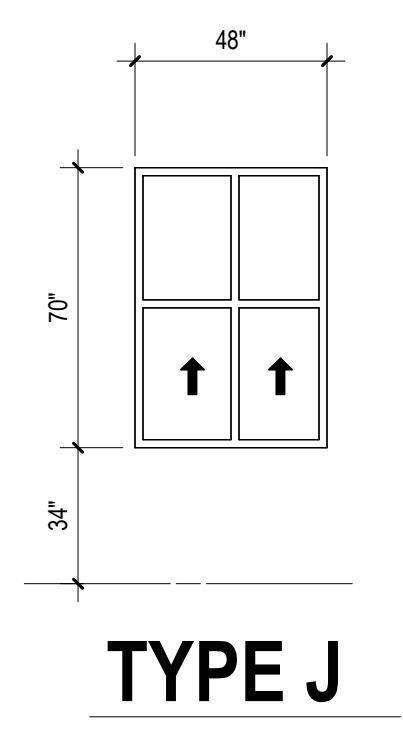
**TYPE KKK**



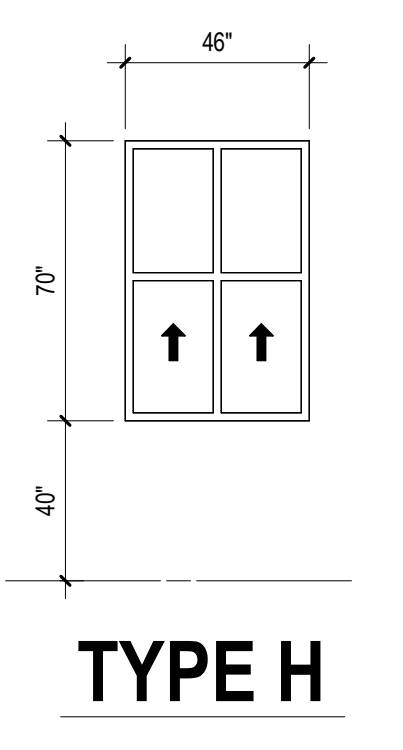
**TYPE KK**



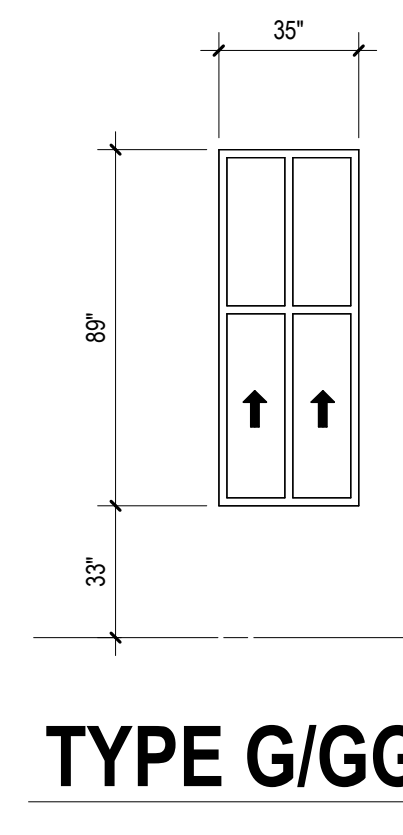
**TYPE K**



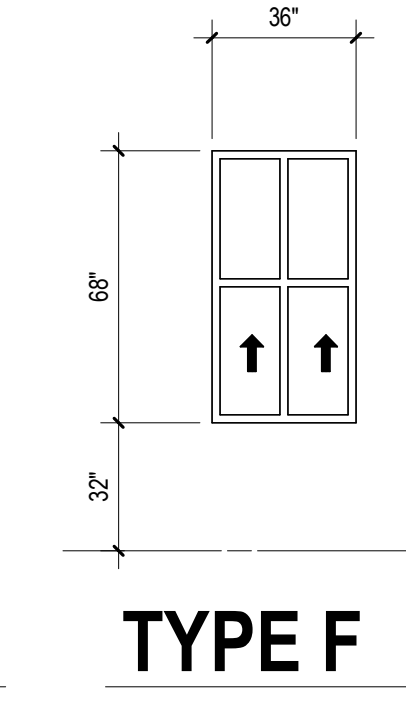
**TYPE J**



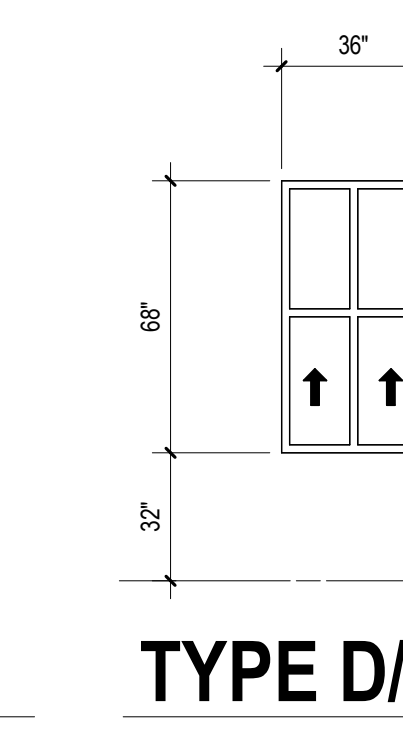
**TYPE H**



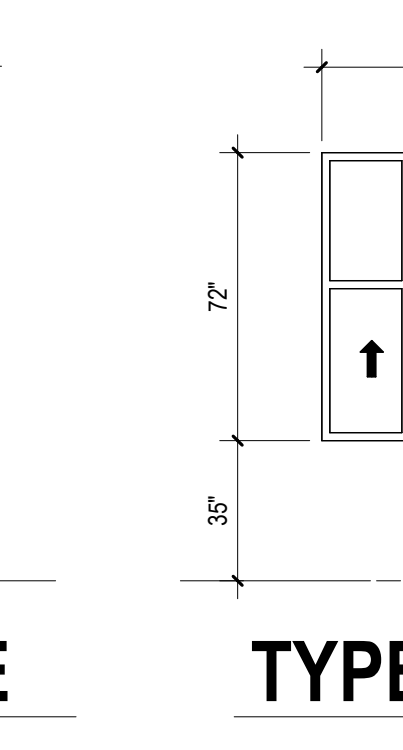
**TYPE G/GG**



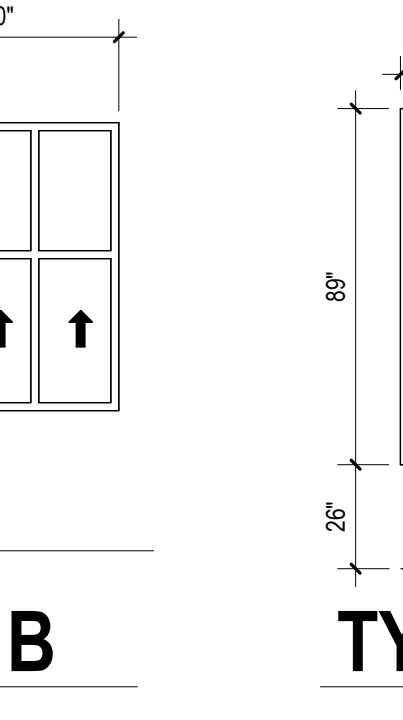
**TYPE F**



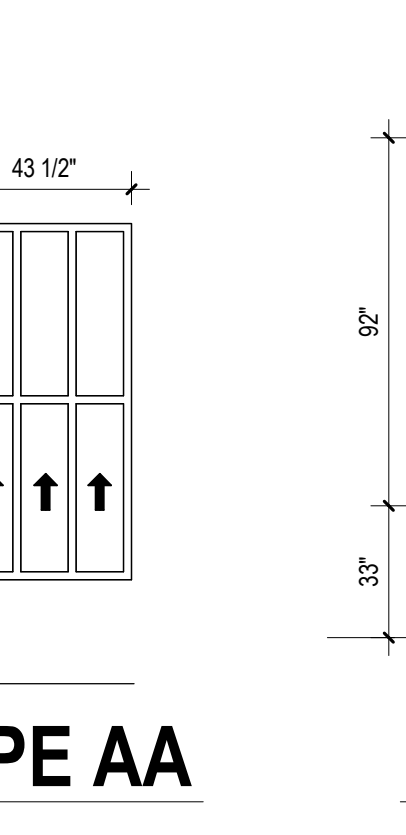
**TYPE D/E**



**TYPE B**



**TYPE AA**



**TYPE A**

1 2 3 4 5 6 7