



CERTIFICATE OF APPROPRIATENESS APPLICATION FORM

Incomplete applications will not be processed for Commission review.
Please print legibly.

1. HISTORIC NAME OF PROPERTY OR HISTORIC DISTRICT: (if known)

ADDRESS OF PROPERTY:

1344 E BRADY STREET

2. NAME AND ADDRESS OF OWNER:

Name(s): JIMMY JOHNS

Address: 1344 EAST BRADY STREET

City: MILWAUKEE

State: WI

ZIP: 53202

Email: _____

Telephone number (area code & number) Daytime: _____ Evening: _____

3. APPLICANT, AGENT OR CONTRACTOR: (if different from owner)

Name(s): SOUTHPORT HEATING AND COOLING

Address: 6919 51ST STREET

City: KENOSHA

State: WI

ZIP Code: 53144

Email: DLEICHT@SOUTHPORTHEATING.COM

Telephone number (area code & number) Daytime: 262-654-6630 Evening: _____

4. ATTACHMENTS: (Because projects can vary in size and scope, please call the HPC Office at 414-286-5712 for submittal requirements)

A. REQUIRED FOR MAJOR PROJECTS:

N/A Photographs of affected areas & all sides of the building (annotated photos recommended)

N/A Sketches and Elevation Drawings (1 full size and 1 reduced to 11" x 17" or 8 1/2" x 11")
A digital copy of the photos and drawings is also requested.

N/A Material and Design Specifications (see next page)

B. NEW CONSTRUCTION ALSO REQUIRES:

_____ Floor Plans (1 full size and 1 reduced to a maximum of 11" x 17")

_____ Site Plan showing location of project and adjoining structures and fences


**PLEASE NOTE: YOUR APPLICATION CANNOT BE PROCESSED UNLESS
BOTH PAGES OF THIS FORM ARE PROPERLY COMPLETED
AND SIGNED.**

5. DESCRIPTION OF PROJECT:

Tell us what you want to do. Describe all proposed work including materials, design, and dimensions. Additional pages may be attached.

HVAC EQUIPMENT REPLACEMENT. NEW UNITS ARE WITHIN INCHES OF EXISTING SIZES, NO OTHER EXTERIOR ALTERATIONS.

6. SIGNATURE OF APPLICANT:


Signature

DAVE LEICHT
Please print or type name

1/4/13
Date

This form and all supporting documentation **MUST** arrive by 12:00 noon on the deadline date established to be considered at the next Historic Preservation Commission Meeting. Any information not provided to staff in advance of the meeting will not be considered by the Commission during their deliberation. Please call if you have any questions and staff will assist you.

Hand Deliver or Mail Form to:
Historic Preservation Commission
City Clerk's Office
200 E. Wells St. Room B-4
Milwaukee, WI 53202

PHONE: (414) 286-5722

FAX: (414) 286-3004

www.milwaukee.gov/hpc



SUBMITTAL

Project

Jimmy John's

Date

Monday, December 10, 2012

Table Of Contents

Project: ~Untitled11
Prepared By:

12/10/2012
10:42AM

6 Ton RTU	3
Unit Report	4
Certified Drawing	5
Performance Summary.....	7
Unit Feature Sheet	10

6 Ton RTU

Project: ~Untitled11
Prepared By:

12/10/2012
10:42AM

6 Ton RTU

**Tag Cover Sheet
Unit Report
Certified Drawing
Performance Report
Spec Sheet
Unit Feature Sheet**

Unit Report For 6 Ton RTU

Project: ~Untitled11
Prepared By:

12/10/2012
10:42AM

Unit Parameters

Unit Model: 48TCEA07A2A5-0A0A0
Unit Size:07 (6 Tons)
Volts-Phase-Hertz: 208-3-60
Heating Type:Gas
Duct Cfg: Vertical Supply / Vertical Return
Medium Heat
Round Tube Plate Fin Coils

Dimensions (ft. in.) & Weight (lb.) ***

Unit Length:6' 2.375"
Unit Width:3' 8"
Unit Height:3' 5.375"
*** Total Operating Weight: 671 lb

*** Weights and Dimensions are approximate. Weight does not include unit packaging. Approximate dimensions are provided primarily for shipping purposes. For exact dimensions and weights, refer to appropriate product data catalog.

Lines and Filters

Gas Line Size: 1/2
Condensate Drain Line Size: 3/4
Return Air Filter Type: Throwaway
Return Air Filter Quantity: 4
Return Air Filter Size:16 x 16 x 2

Unit Configuration

Medium Static Option
Al/Cu - Al/Cu
Base Electromechanical Controls
Standard Packaging

Warranty Information

1-Year parts(std.)
5-Year compressor parts(std.)
10-Year heat exchanger - Aluminized(std.)

No optional warranties were selected.

NOTE: Please see Warranty Catalog 500-089 for explanation of policies and ordering methods.

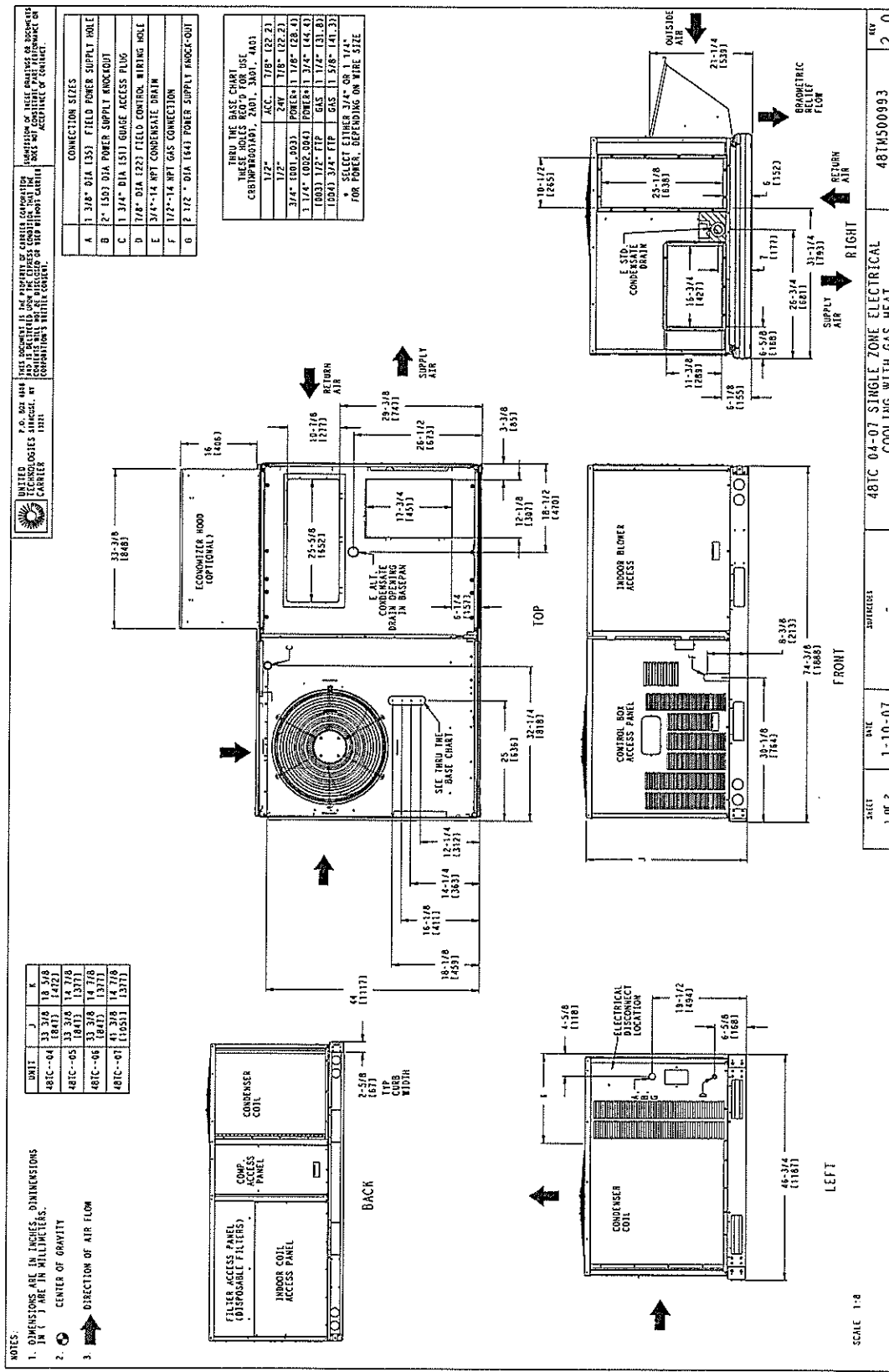
Ordering Information

Part Number	Description	Quantity
48TCEA07A2A5-0A0A0	Rooftop Unit	1

Certified Drawing for 6 Ton RTU

Project: ~Untitled11
 Prepared By:

12/10/2012
 10:42AM



! Qf sgsn bodf !Tvn n bsz!Gps!7!Upo!SUV!
Qspif du!AVojuhe22! ! 2302108123!
Qsf qbsf e!Cz;!! ! 21;53BN!

! Qbsu!Ovn cf s;59UDFB18B3B6.1B1B1!
!

BSJFFS;V////////////////////////////////////22/11! !
JFFS;V////////////////////////////////////22/3! !

Cbt f !VojuEjn f ot jpot !
!!!!VojuM ohu ;V////////////////////////////////////85/5! jo!
!!!!VojuX jeu ;V////////////////////////////////////55/1! jo!
!!!!VojuI f jhi u;V////////////////////////////////////52/5! jo!
Pqf sbujoh!X f jhi u
!!!!Cbt f !VojuX f jhi u;V////////////////////////////////////763! ro!
!!!!Nf ejvn !! f bu;V////////////////////////////////////: ! ro!
!!!!Nf ejvn !Tubjd!Pqjpo;V////////////////////////////////////21! ro!
! !
!!!!UpbrfPqf sbujoh!X f jhi u;V////////////////////////////////////782! ro!
!

Voju
!!!!VojuWpnbhf .Qi bt f .l f s;V////////////////////////////////////B19.4.71! !
!!!!BjsEjt di bshf ;V////////////////////////////////////W sjdbrh !
!!!!GoolEjwf !Uzqf ;V////////////////////////////////////!Cf rd !
!!!!BduvbrfBjsgpx ;V////////////////////////////////////321! DGN!
!!!!Tjuf !Bnjwef ;V////////////////////////////////////! gl
!

Dppjrh!Qf sgsn bodf !
!!!!Dpoef ot f sFouf sgh!BjsEC;V////////////////////////////////////t: 6/1! G
!!!!FwbqpsupsFouf sgh!BjsEC;V////////////////////////////////////9/1! G
!!!!FwbqpsupsFouf sgh!BjsX C;V////////////////////////////////////78/1! G
!!!!Fouf sgh!BjsFou brqz;V////////////////////////////////////42/55! CUV0a!
!!!!FwbqpsupsM bwjoh!BjsEC;V////////////////////////////////////67/1! G
!!!!FwbqpsupsM bwjoh!BjsX C;V////////////////////////////////////66/9! G
!!!!FwbqpsupsM bwjoh!BjsFou brqz;V////////////////////////////////////34/75! CUV0a!
!!!!Hspt t !Dppjrh!Dbqbdjz;V////////////////////////////////////84/79! NCI !
!!!!Hspt t !Tf ot jcrhl!Dbqbdjz;V////////////////////////////////////65/53! NCI !
!!!!Dpn qsf t t ps!Qpx f s!bqv;V////////////////////////////////////6/21! IX !
!!!!DjrtCzqbt t !Cbdps;V////////////////////////////////////1/181! !
!

I f bjoh!Qf sgsn bodf !
!!!!I f bjoh!Bjsgpx ;V////////////////////////////////////321! DGN!
!!!!Fouf sgh!BjsUf n q;V////////////////////////////////////81/1! G
!!!!M bwjoh!BjsUf n q;V////////////////////////////////////222/1! G
!!!!Hbt !.bqv!Dbqbdjz;V////////////////////////////////////226/1! NCI !
!!!!Hbt !I f bjoh!Dbqbdjz;V////////////////////////////////////: 4/11! NCI !
!!!!Uf n qf sbwef !Sjt f ;V////////////////////////////////////52/1! G
!

Tvqqm!Gbo!
!!!!Fyif sobrt!ubjd!Qsf t t vsf ;V////////////////////////////////////1/61! jolx h!
!!!!GoolSQN ;V////////////////////////////////////2345! !
!!!!GoolQpx f s;V////////////////////////////////////2/34! CI Q!
!!!!OPUF;V////////////////////////////////////Tf rdud e!JN !SQN !Sbohf ;!2284! !2629! !
!

Frfidujdbrr!Ebb!)Cf gsf !Kvr!41-!3123*!
!!!!Njojn vn !Wpnbhf ;V////////////////////////////////////298! !
!!!!Nbyjn vn !Wpnbhf ;V////////////////////////////////////364! !
!!!!Dpn qsf t t ps!\$2!SMB;V////////////////////////////////////2: ! !
!!!!Dpn qsf t t ps!\$2!SMB;V////////////////////////////////////234! !
!!!!P vtepps!Goo!N pps!Rz;V////////////////////////////////////2! !
!!!!P vtepps!Goo!GVB!)f b*;V////////////////////////////////////2/6! !
!!!!.bepps!Goo!N pps!Uzqf ;V////////////////////////////////////N FE! !
!!!!.bepps!Goo!N pps!GVB;V////////////////////////////////////8/6! !
!!!!Dpn cvt !pol!Goo!N pps!GVB!)f b*;V////////////////////////////////////1/59! !

!!!!Qpx f sTvqqz!NDB;//////////////////////////////////////44! !
 !!!!Qpx f sTvqqz!NP DQ!)Qvt f !ps! BDS*;//////////////////////////////////////61! !
 !!!!Njo!VojuEjt dpoof duGVB;//////////////////////////////////////43! !
 !!!!Njo!VojuEjt dpoof duMSB;//////////////////////////////////////294! !
 !!!!FrñdujdbrtDpowf ojf od f !Pvufu!//////////////////////////////////////Opof ! !
 !

FrñdujdbrtEbul!)Kvrñ!41-!3123!boe!Cf zpoe*!
 !!!!.bepps!Gbo!N pps!GVB;//////////////////////////////////////9/5! !
 !!!!Qpx f sTvqqz!NDB;//////////////////////////////////////45! !
 !!!!Qpx f sTvqqz!NP DQ;//////////////////////////////////////61! !
 !!!!Ejt dpoof duTj{ f !GVB;//////////////////////////////////////44! !
 !!!!Ejt dpoof duTj{ f !MSB;//////////////////////////////////////2: ! !
 !

!Kvrñ!41ü !boe!cf zpoe!vojt !dbolcf !jef oujg f elcz!t f sjbrtovn cf sl4223YYYYYYYYY!boeli jhi f sl

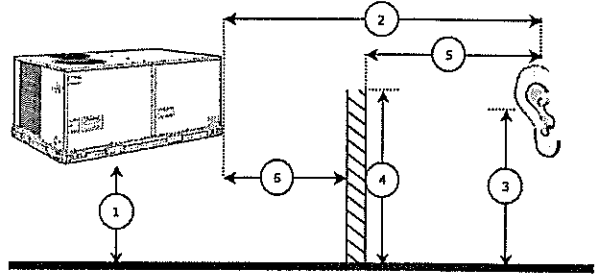
!Dpousprt!Qbof rñ!DDS;!6! B!SNT!bu!Sbuf e!Tzn n f ujdbrt!Wörñbf !

Bdpvt üdt !
 !!!!Tpvoe!Qpx f s!M w f rñ-lec!sf !21F.23!X but !

	Ejt di bshf !	.brñu	Pvuepps!
74!! {!	98/6!	98/2!	99/9!
236!! {!	93/9!	8: /6!	92/9!
361!! {!	86/9!	77/8!	87: !
611!! {!	82/6!	74/: !	85/5!
2111!! {!	79/2!	74/4!	84/4!
3111!! {!	73/4!	68/5!	7: /9!
5111!! {!	75/2!	64/4!	77/4!
9111!! {!	6: /9!	56/: !	73/8!
	!	!	!
B.X f jhi uf el!	85/: !	7: /4!	89/1!

Bewbodf e!Bdpvt üdt !

Bewbodf e!Bddpvt üdt !Qbsn f uf st !
 !!!!2!Voju! f jhi ubcpwf !hspvoe;//////////////////////////////////////41/1! gl
 !!!!3!! ps{ poubrtejt uodf !gn !voju!psf df jw s!//////////////////////////////////////61/1! gl
 !!!!4!!Sf df jw s! f jhi ubcpwf !hspvoe;//////////////////////////////////////6/8! gl
 !!!!5!! f jhi upgpct uvdjpo;//////////////////////////////////////1/1! gl
 !!!!6!! ps{ poubrtejt uodf !gn !pct uvdjpo!psf df jw s!//////////////////////////////////////1/1! gl
 !!!!7!! ps{ poubrtejt uodf !gn !voju!pct uvdjpo;//////////////////////////////////////1/1! gl



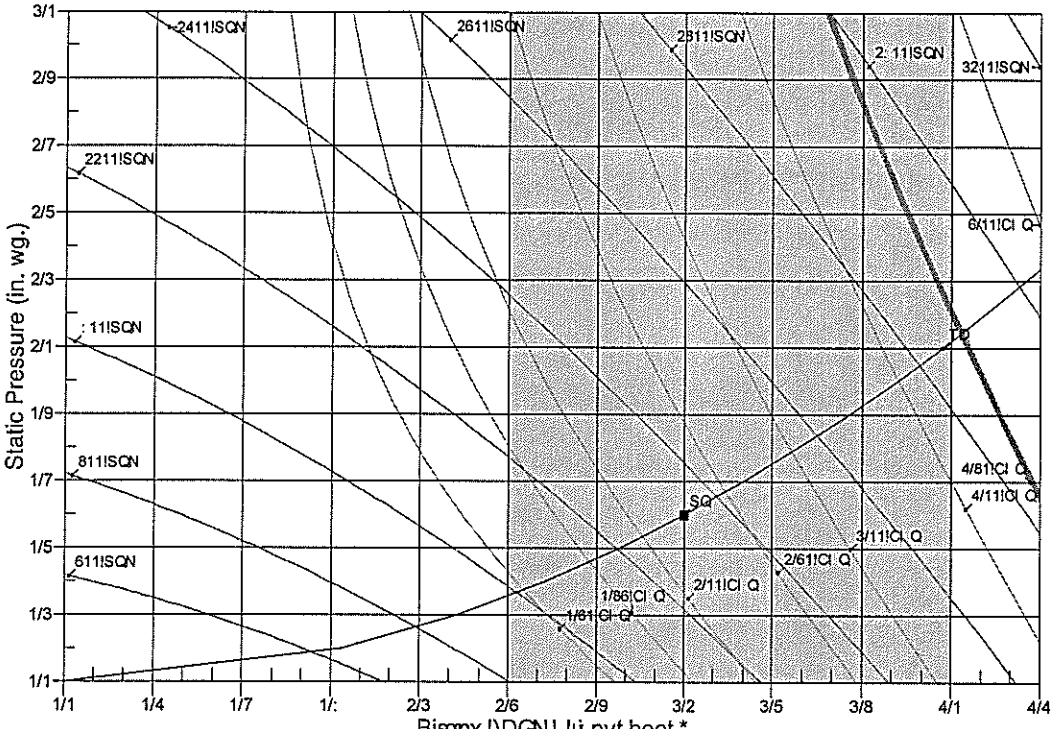
Ef ubrñe!Bdpvt üdt !.bgpsn büjo!

P!dbwf !Cboe!Df ouf s!Gsf r vf odz-!! {!!	74!	236!	361!	611!	2! !	3! !	5! !	9! !	Pwf sbrñh
2!/Tpvoe!Qpx f s!M w f rñ!buVoju! !Bdpvt üdt!Df ouf s!Mk	99/9	92/9	87:	85/5	84/4	7: /9	77/4	73/8:	1/2!Mk !!
3!/B.X f jhi uf el!Tpvoe!Qpx f s!M w f rñ!buVoju! !Bdpvt üdt!Df ouf s!Mk B! !	73/7	76/8	79/4	82/3	84/4	82/1	78/4	72/7	89/3!Mk B!
4!/Tpvoe!Qsf t t vsf !M w f rñ!buTqf djgd!Ejt uodf !gn !Voju!Mj! !	67/5	5: /5	55/6	53/1	51:	48/5	44:	41/4	68/8!Mj! !
5!/B.X f jhi uf el!Tpvoe!Qsf t t vsf !M w f rñ!buTqf djgd!Ejt uodf !gn !Voju!MjB! !	41/3	44/4	46:	49/9	51:	49/7	45:	3: /3	56/9!MjB!

Dbñrvñbüjpoln f ü pet lvt f eljolu jt !qspñsn !bsf !qbuf sof elbgf slü f !BT! SBF!Hvjef 4pu f sBT! SBF!Qvcñebüjpot !boeli f !BI SJBdpvt üdbrñ
 T!boebset !/!X i jñ!blw! sz!t jhojgdbouf gpsli bt lcf f o!n bef !upljot vsf !ü f !f di ojdrñb!ddv!sbdz!pgü jt !qspñsn !-ljüt !bt t vn f elü büü f !vt f sl
 jt !! opx rñehf bcrñ!jolu f !bs!pjt zt uf n !t pvoe!f t ün büjo!boelj! !bx bsf !pgü f !prñs!bodf t !jovpñf eljolsf brñ psñ!bdpvt üdbrñ t ün büjo!!
 Ü jt !qspñsn !n bl f t !df sbjot!bt t vn üjpot !bt !plü f !epn jobout pvoe!t pvadf t !boelt pvoe!qbu t !x i jdi !n bz!opub!rñbz!t !cf !bqqspqsbüf !p!

ú f !sf brtt zt uf n lcf joh!f t yn bú e!! Cf dbvt f !pgú jt -lop!bt t vsòdf t !dbo!cf !pgf sf e!ú bulú jt !t pgx bsf !x jmlbæ bzt !hf of sbuf !bo!bddvòuf !
 t pvoelqsf ejdjpogpn lvt f st vqqrjfi eljoqvleubú/! !.ljolepvcubcpvulú f !f t yn býpo!pgf yqf duf elt pvoelrfw! rnljo!b!t qbdf -!bo!Bdpvt újbrh
 Fohjof f spsblqf st po!x jú !t pvoelqsf ejdjpolf yqf sjt f !t i pvrelcf !dpot vnf e/!

Gbo!Dvsf

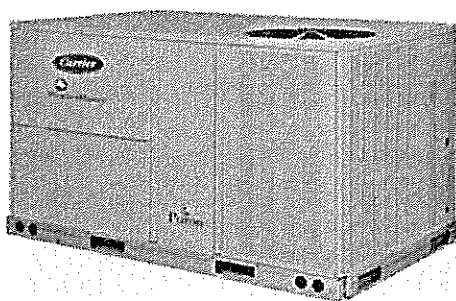


Bjsqpx !DGN!.!ú pvt boet *
 SQN !>12345!!CI Q>!2/34!!N byjn vn !SQN !>12696!!N byjn vn !! Q>!4/81
 Opuf;!Qf!t f !dpou!ubqqrj!bypof ohjof f sch!g!st f rfdjpot !pvú jef !ú f !t i bef els!hjpo/
 TD!.!Tztuf n !Dvsf !!SQ. !Staf elQjou



WeatherMaker® – 48TC

PACKAGED ROOFTOP GAS HEATING/ELECTRIC COOLING UNITS
3, 4, 5, 6, 7.5, 8.5, 10, 12.5, 15 TONS



Optional Louvered Hail Guard Shown



WEATHERMAKER SERIES

WeatherMaker (48TC) units are one-piece gas heating, electric cooling units that are pre-wired and charged with Puron (R-410) refrigerant. They are factory tested in both heating and cooling modes, and rated in accordance with AHRI Standards 210/240 (04-06 sizes) and 340/360 (07-16 sizes). WeatherMaker units are designed in accordance with UL Standard 1995, and listed by the Underwriters' Laboratories.

Approved and certified by:



Use of the AHRI Certified TM Mark indicates a manufacturer's participation in the program for verification of certification for essential products. go to www.ahriinc.org

Certified to ISO 9001

STANDARD FEATURES INCLUDE:

- Puron (R-410A) HFC refrigerant
- ASHRAE 90.1 energy compliant
- Scroll compressors with internal line break and overload protection
- Single-stage cooling capacity control on 04-12 models
- Two-stage cooling capacity control on 08-15 models
- SEER's up to 13.0, EER's up to 11.1 and IEEER's up to 11.8
- Acuroil™ refrigerant metering system
- Exclusive non-corrosive composite condensate pan in accordance with ASHRAE Standard 62, sloping design, side or center drain
- Standard cooling operation up to 115°F (45°C) and down to 40°F (4°C) - down to 25°F (-4°C) with winter start kit.
- Pre-painted exterior panels and primer-coated interior panels tested to 500 hours salt spray protection
- Fully insulated cabinet
- Exclusive IGC solid-state control for on-board diagnostics with LED error code designation, burner control logic and energy saving indoor fan motor delay
- Low NOx models that meet California Air Quality Management
- Induced draft gas heat combustion design
- Redundant gas valves with up to two stages of heating
- Low pressure and high pressure switch protected.

MAINTENANCE FEATURES:

- Access panels with easy grip handles
- Innovative easy starting, no-strip screws on unit access panels
- Two-inch disposable return air filters and Tool-less filter access door
- Belt drive evaporator-fan motor and pulley combinations
- New terminal board facilitating simple safety circuit troubleshooting and simplified control box arrangement
- Exclusive IGC solid-state control for on-board diagnostics with LED error code designation, burner control logic and energy saving indoor fan motor delay.

INSTALLATION FEATURES:

- Thru-the-bottom power entry capability
- Single point gas and electric connections
- Full perimeter base rail with built-in riggering adapters and fork slots
- Field convertible from vertical to horizontal airflow for slab mounting. (16 size models require field installed supply duct cover).

STANDARD WARRANTY:

- 10-year heat exchanger – 16-year stainless steel option
- 5-year compressor
- 1-year parts
- 3-year points on Novation Condenser coils – where available
- Many optional upgrades also available

OPTIONS INCLUDE BUT ARE NOT LIMITED TO:

- PremierLink™ and RTU Open Multi Protocol DDC Controls
- Supply and Return Air Smoke Detectors, high static motors
- Louvered condenser coil guards
- Economizer, disconnect and convenience outlet options
- Stainless Steel heat exchanger option
- Corrosion resistant coil coating
- Humidi-Mizer™ adaptive dehumidification system available on all models with RTPF condenser coils – Motor Master I controller included
- Hinged access panels

For a complete list of options and accessories refer to the Product Data Catalog for this unit.

SUBMITTAL

MicroMelt

FORM NO. 1174-27P

DATE: 1/12

Knocked-down Roofcurbs for Carrier
 48/50TC AIB04-A/B07; 50TCQ A04-A07; 48/50LC HC A04-A06;
 48/50TF, TM, HJ, TFQ 004-007; 48/50HE 003-006; 50HCQ A04-A06 Units

Part Number:

0537 Series

SUBMITTED TO _____
 COMPANY: _____
 DRAWN BY: A.L.L.
 JOB NAME: _____
 EQUIPMENT: _____
 NOTES: _____

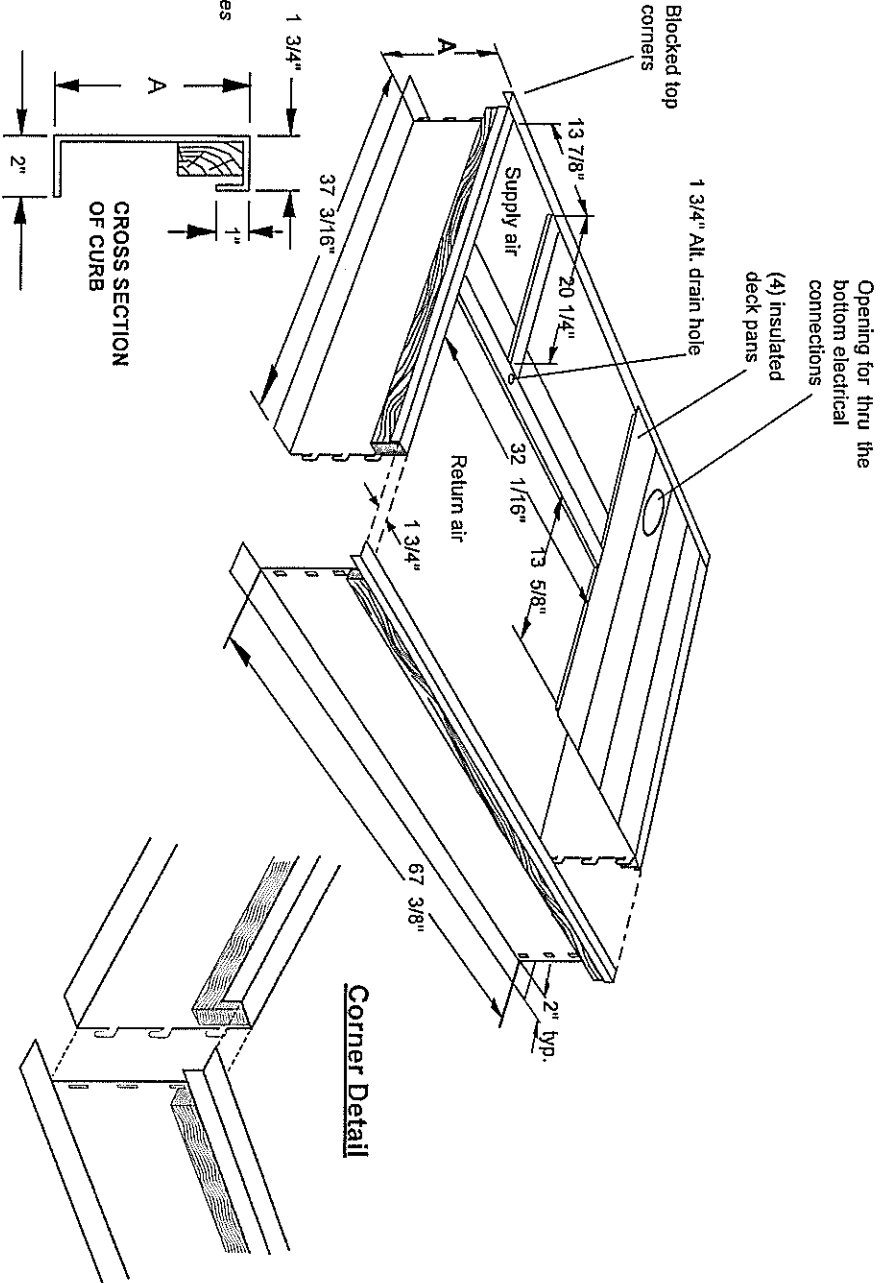
FEATURES

- * Roofcurb sides and ends are 16ga. galvanized steel, (.058 min.)
- * Gasketing package provided.
- * Full perimeter wood nailer.

NOTES:

- 1.) Adjustable pitched/adjustable height curbs and taller curbs are available.
- 2.) Attach ductwork to roofcurb. Flanges of duct rest on top of curb.
- 3.) Roofcurbs are marked with the Carrier part number.
- 4.) The standard MicroMelt curbs do not have service plate holes. If they are required, you must specify on the order.

NOTE: If using through-the-side of the curb gas or electrical connections, you must specify service holes are required. Optional service plates: 0815-0537.



0537 Series Roofcurb Specifications (in inches)			
MicroMelt Part No.	Carrier Part No.	A	Weight
0537-008A	N/A	8	71 lbs
0537-011A	N/A	11	82 lbs
0537-014A	CRRFCURB001A02	14	94 lbs
0537-024A	CRRFCURB002A02	24	131 lbs

THIS DOCUMENT IS THE PROPERTY OF MICROMETL CORPORATION AND IS DELIVERED UPON THE EXPRESS CONDITION THAT THE CONTENTS WILL NOT BE DISCLOSED OR USED WITHOUT MICROMETL'S WRITTEN CONSENT.

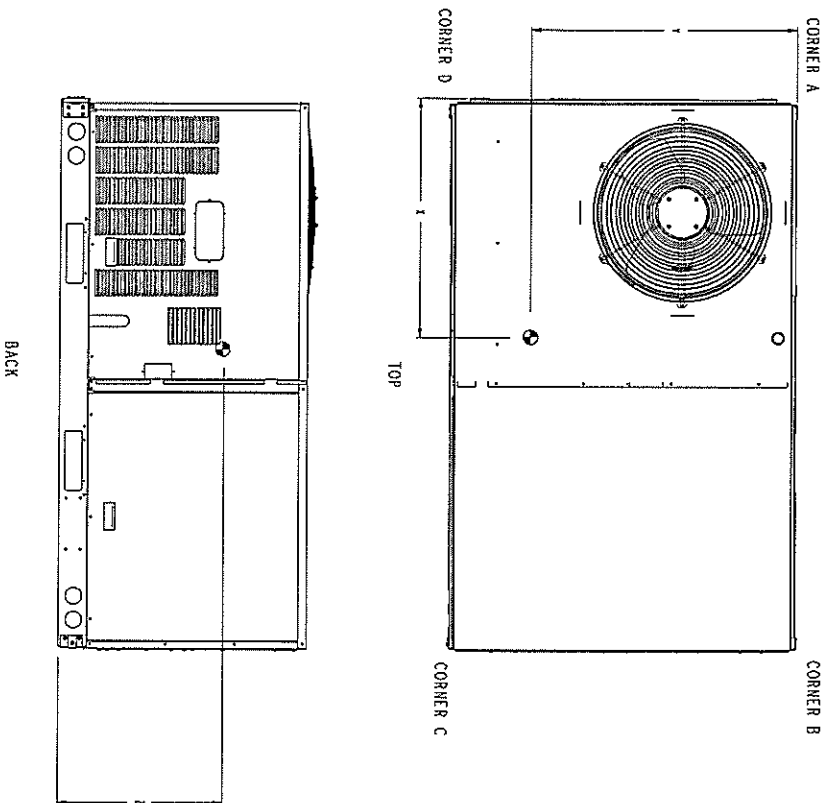
MICROMETL CORP. • 3035 NORTH SHADELAND AVENUE, SUITE 300 • INDIANAPOLIS, IN. 46226 • 1-800-662-4822 *** MICROMETL SPARKS • 202 SOUTH 18TH ST. • SPARKS, NV 89431 • 1-800-864-4662

Project: ~Unlited1
 Prepared By:

Certified Drawing for 6 Ton RTU

12/10/2012
 10:42AM

UNIT	STD. UNIT		CORNER		CORNER		CORNER		CORNER		CORNER		C.G.	HEIGHT			
	WEIGHT	WEIGHT	WEIGHT	WEIGHT	WEIGHT	WEIGHT	WEIGHT	WEIGHT	WEIGHT	WEIGHT	WEIGHT						
48TC-04	483	219	311	50	125	57	131	59	118	53	39	[9913]	23	[5841]	16	3/8	[418]
48TC-05	537	244	324	56	139	63	145	66	129	59	39	[9913]	23	[5841]	17	1/4	[432]
48TC-06	569	259	331	59	147	67	154	70	137	62	39	[9913]	23	[5841]	17	1/4	[438]
48TC-07	652	295	350	63	169	76	176	80	157	71	39	[9913]	23	[5841]	20	1/8	[517]



SCALE	3:32
SHEET	2 OF 2
DATE	1-10-07
SUBJECT	48TC 04-07 SINGLE ZONE ELECTRICAL COOLING WITH GAS HEAT
REV	2.0