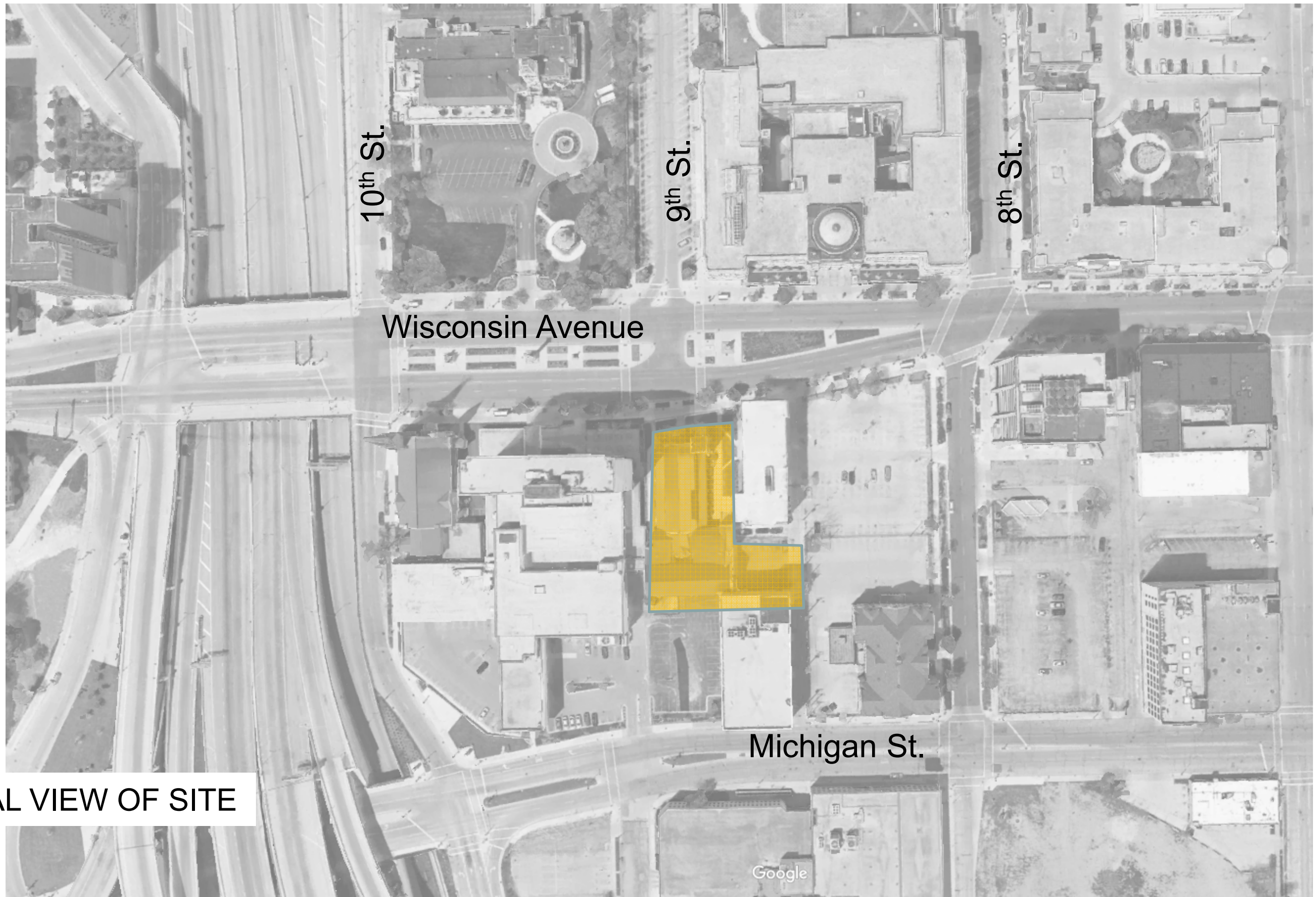


HPC PRESENTATION

**St. James
Event Center / Housing**

NOVEMBER 09, 2017





10th St.

9th St.

8th St.

Wisconsin Avenue

Michigan St.

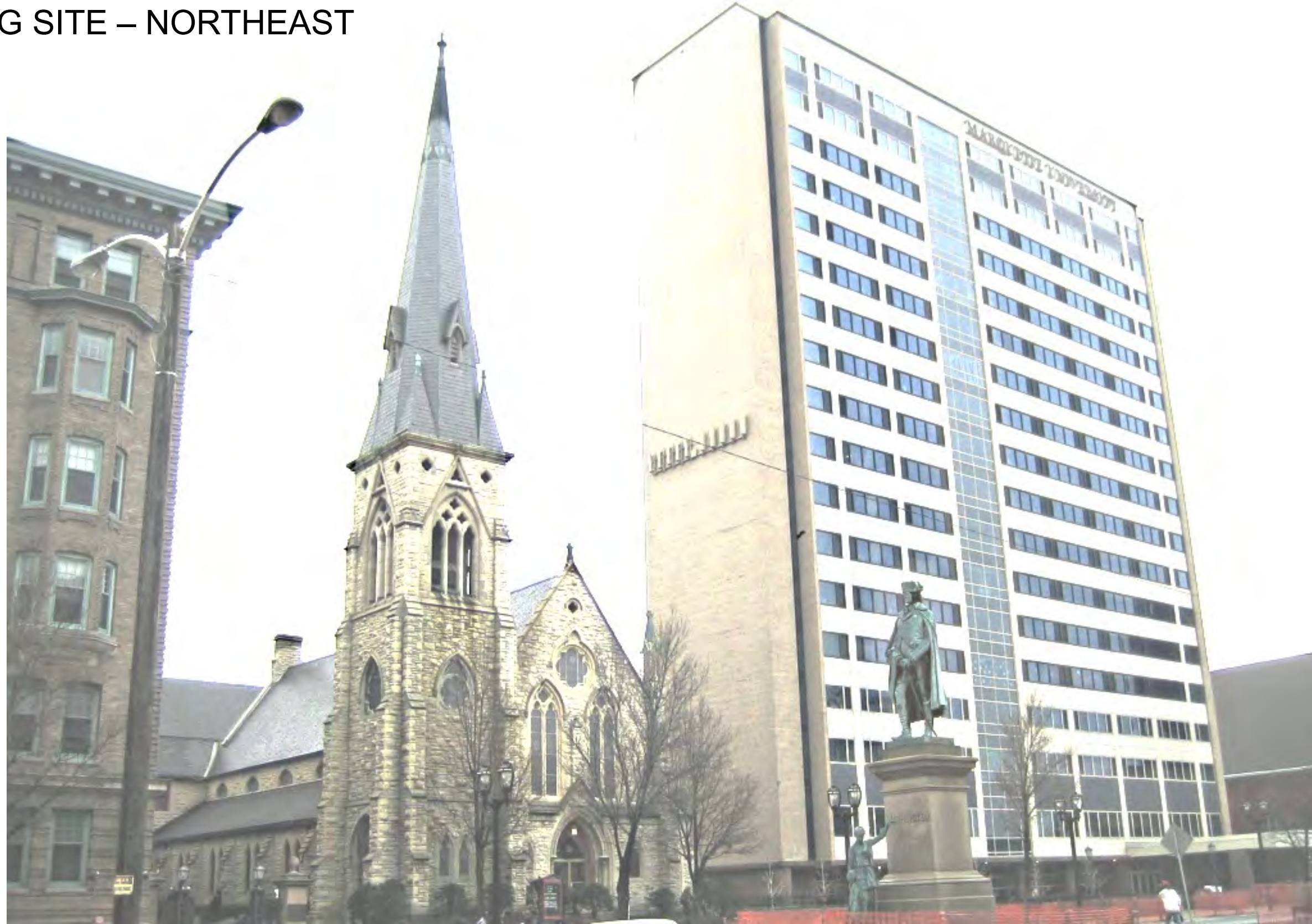
Google

ARIAL VIEW OF SITE

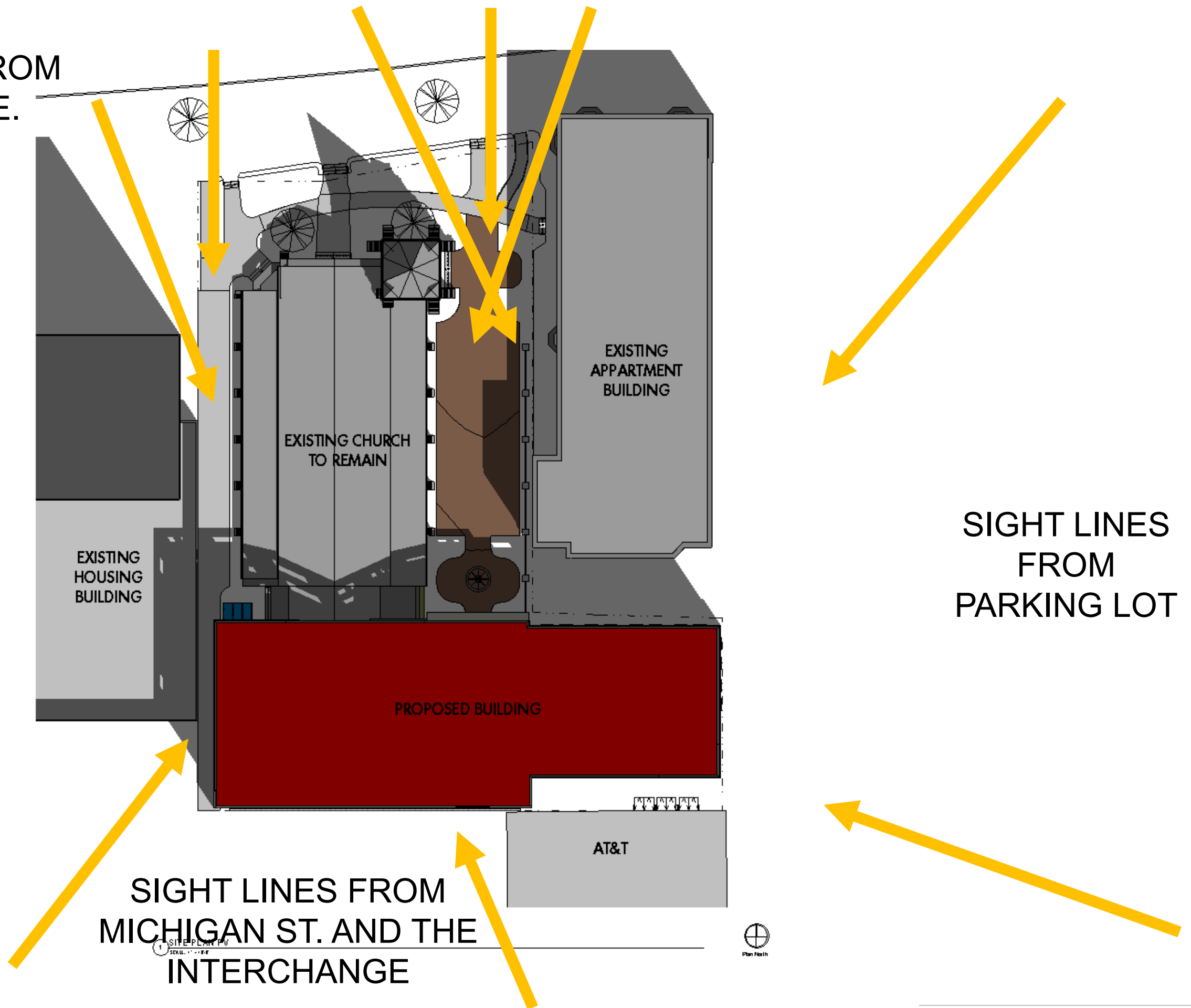


SITE/CONTEXT

EXISTING SITE – NORTHEAST

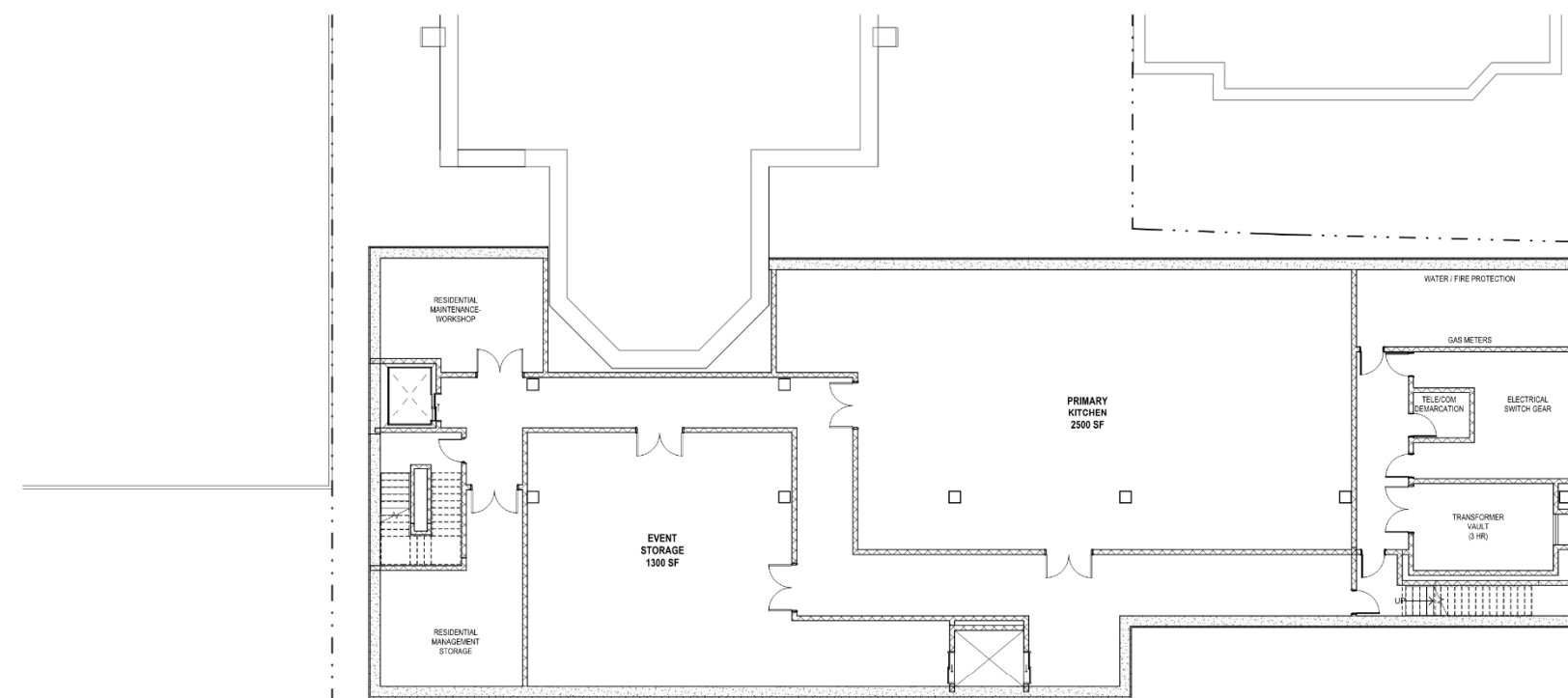


SIGHT LINES FROM
WISCONSIN AVE.



SIGHT LINES FROM
MICHIGAN ST. AND THE
INTERCHANGE

SIGHT LINES
FROM
PARKING LOT



1 BASEMENT PLAN PV
SCALE: 1/8" = 1'-0"



Plan North

A100

**St. James Episcopal
Church**

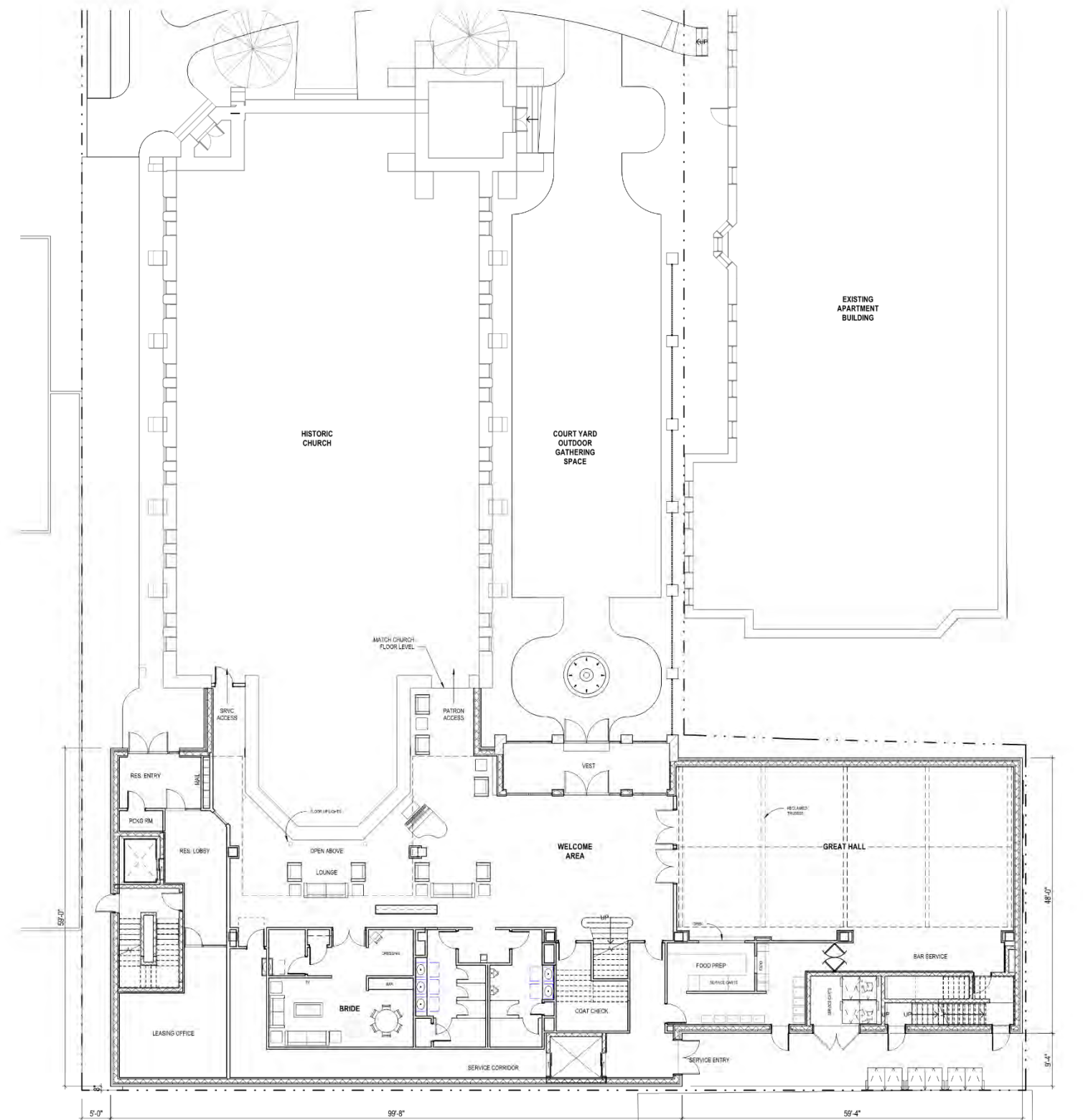
833 W. Wisconsin Avenue

J. Jeffers & Co.
225 E. Michigan St.
Suite 110
Milwaukee, WI 53202

PROJECT NUMBER 172783

ISSUED FOR:
HPC 11-09-2017

REVISION FOR:	NO.	DESCRIPTION	DATE



1 LEVEL 1 PLAN - ADDITION
SCALE: 1/8" = 1'-0"



DRAWN BY	TL
CHECKED BY	JMR
FIRST FLOOR PLAN	

A110

**St. James Episcopal
Church**

833 W. Wisconsin Avenue

J. Jeffers & Co.
225 E. Michigan St.
Suite 110
Milwaukee, WI 53202

PROJECT NUMBER 172783

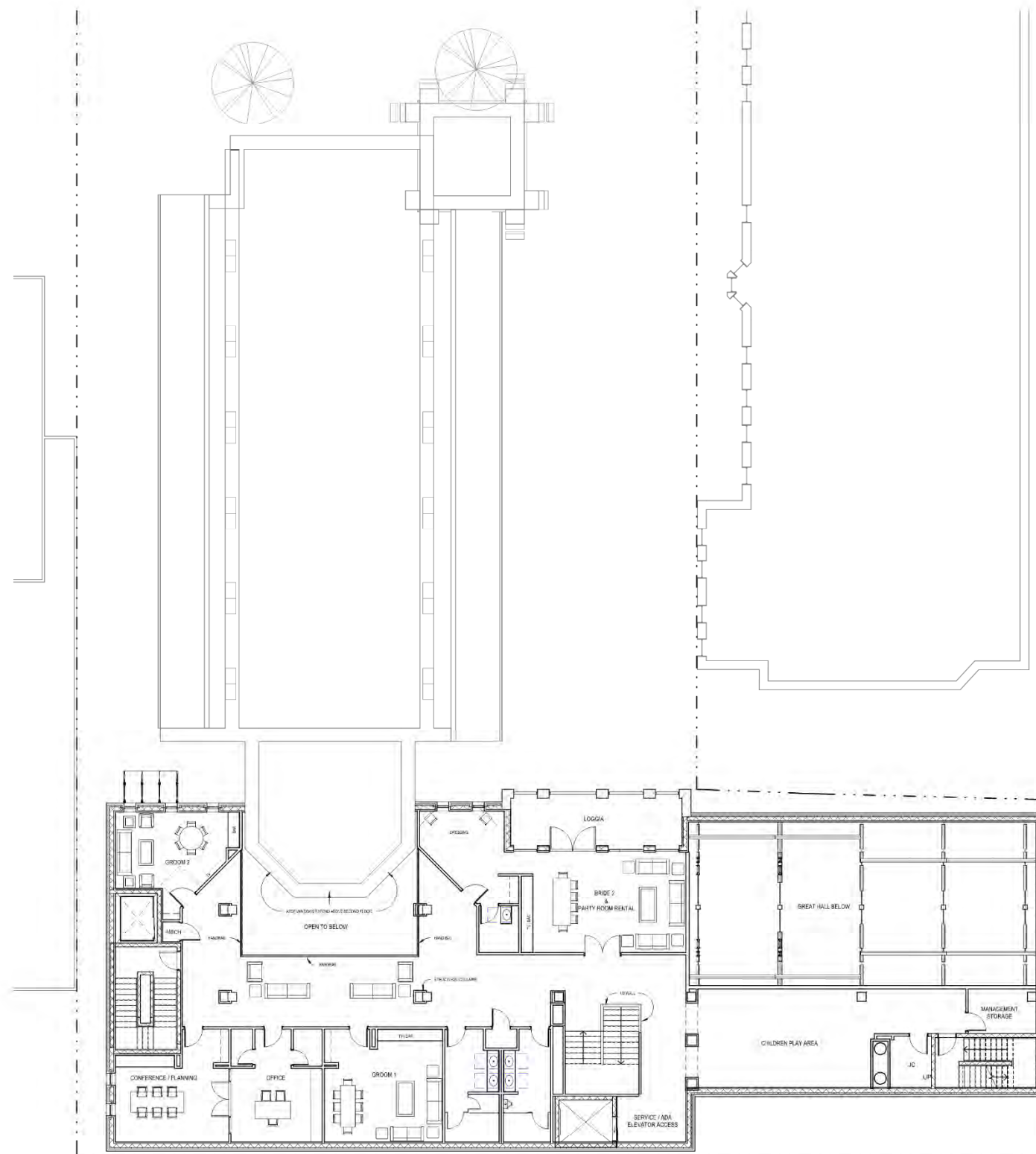
ISSUED FOR:
HPC 11-09-2017

REVISION FOR: NO. DESCRIPTION DATE

DRAWN BY: Author

CHECKED BY: Checker

**SECOND FLOOR
PLAN**



1 SECOND FLOOR PLAN
SCALE: 1/8" = 1'-0"



A120

**St. James Episcopal
Church**

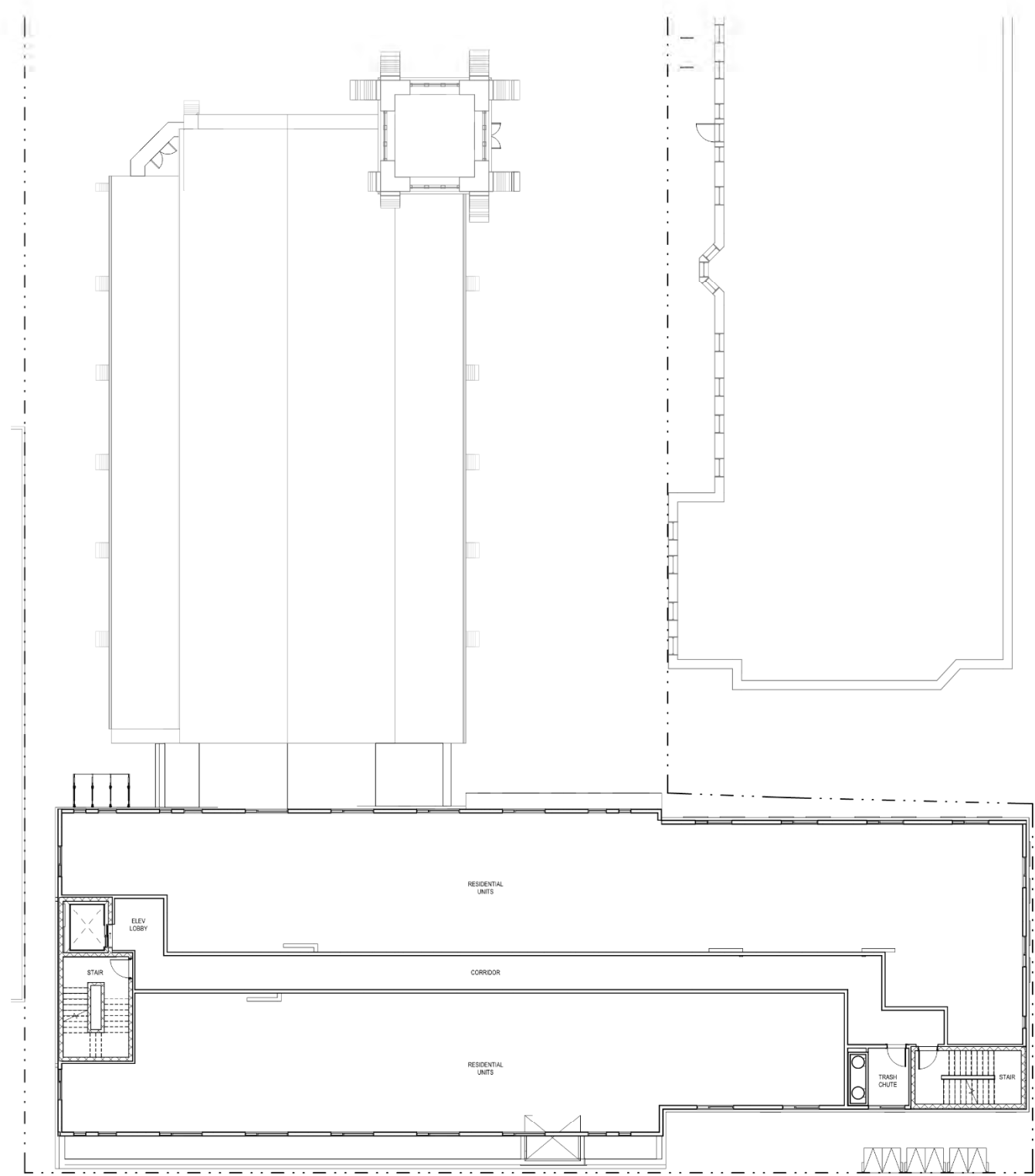
833 W. Wisconsin Avenue

J. Jeffers & Co.
225 E. Michigan St.
Suite 110
Milwaukee, WI 53202

PROJECT NUMBER 172783

ISSUED FOR:
HPC 11-09-2017

REVISION FOR: DATE
NO. DESCRIPTION



① TYPICAL RESIDENTIAL FLOOR
SCALE: 1/8" = 1'-0"



DRAWN BY MT

CHECKED BY JMR

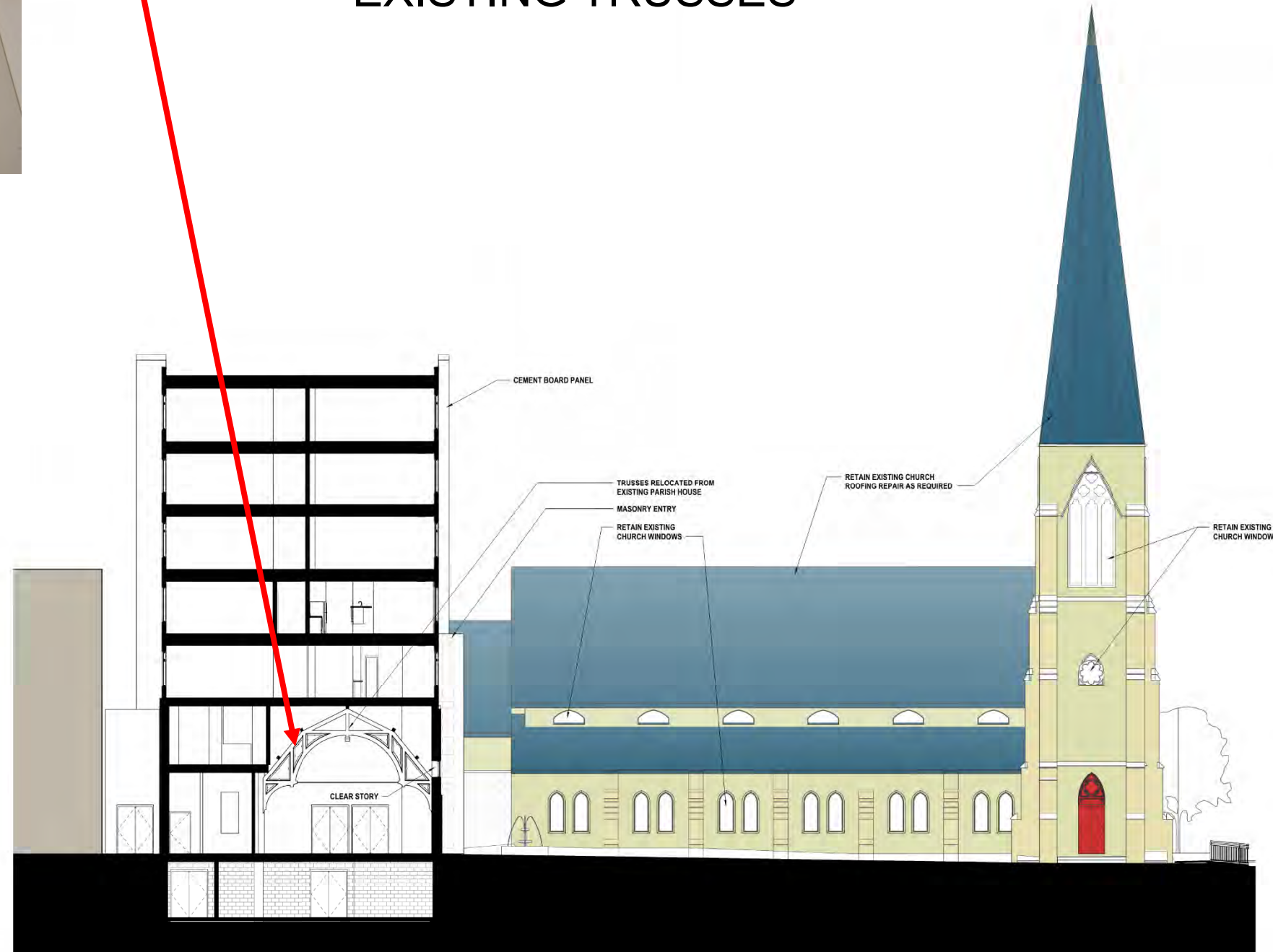
**THIRD -SEVENTH
FLOOR PLAN**

A130



SAVING CHARACTER

REPURPOSING EXISTING TRUSSES



1 BUILDING SECTION LOOKING WEST
SCALE: 1/8" = 1'-0"

St. James

833 W. Wisconsin Avenue

J. Jeffers & Co.
225 E. Michigan St.
Suite 110
Milwaukee, WI 53202

PROJECT NUMBER 172783

ISSUED FOR:		Issue Date
DESCRIPTION		

REVISION FOR:		DATE
NO.	DESCRIPTION	

DRAWN BY	TL
CHECKED BY	JMR

BUILDING SECTIONS

A450

Eclectic Surrounding Architecture



AT&T



Wells
Fargo



Marquette
Housing



Wisconsin
Club



St. James
Apartments



Milwaukee
Central Library

APARTMENTS



VIEW FROM LIBRARY

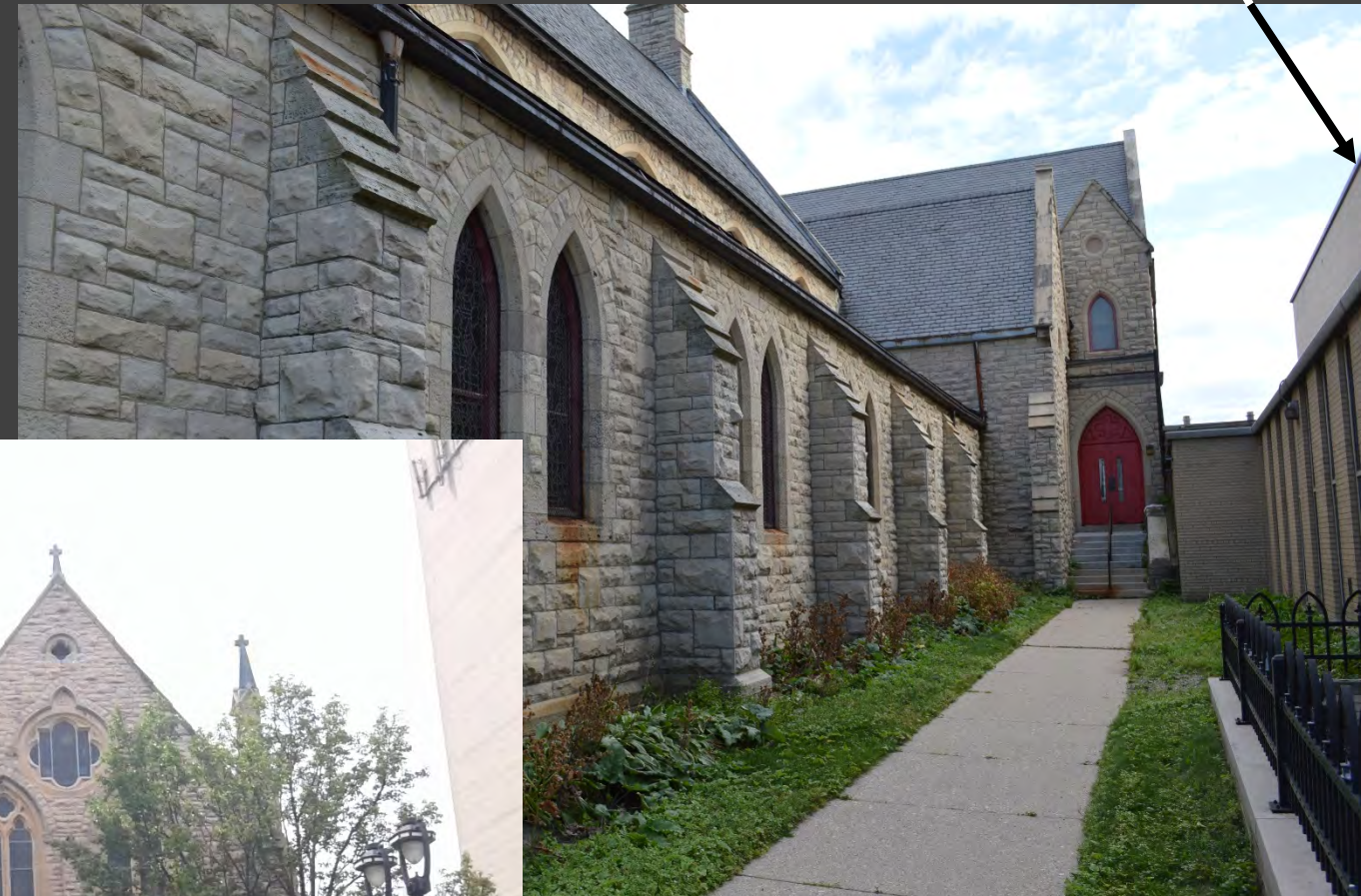
MARQUETTE
HOUSING



NORTH VIEW FROM MEDIAN

ADJACENT APARTMENTS

MARQUETTE HOUSING



NORTH FACADE

PROBLEMATIC BUILDING COLLISION

AT&T

Marquette Housing



PARISH HOUSE FLOOR LEVEL

CHURCH FLOOR

EAST FACADE

PROBLEMATIC BUILDING COLLISION





PARISH HOUSE ADJACENT
TO ANOTHER BUILDING

St. James

833 W. Wisconsin Avenue

J. Jeffers & Co.
225 E. Michigan St.
Suite 110
Milwaukee, WI 53202

PROJECT NUMBER 172783

ISSUED FOR:	DESCRIPTION	Issue Date

REVISION FOR:	NO.	DESCRIPTION	DATE

NORTH FACADE



EAST FACADE



DRAWN BY	Author

CHECKED BY	Checker

ELEVATIONS

A400

St. James

833 W. Wisconsin Avenue

J. Jeffers & Co.
225 E. Michigan St.
Suite 110
Milwaukee, WI 53202

PROJECT NUMBER 172783

ISSUED FOR:	Issue Date
DESCRIPTION	

REVISION FOR:	DATE
NO. DESCRIPTION	

SOUTH FACADE



WEST FACADE



DRAWN BY:	Author
CHECKED BY:	Checker

ELEVATIONS

A401



PERSPECTIVE