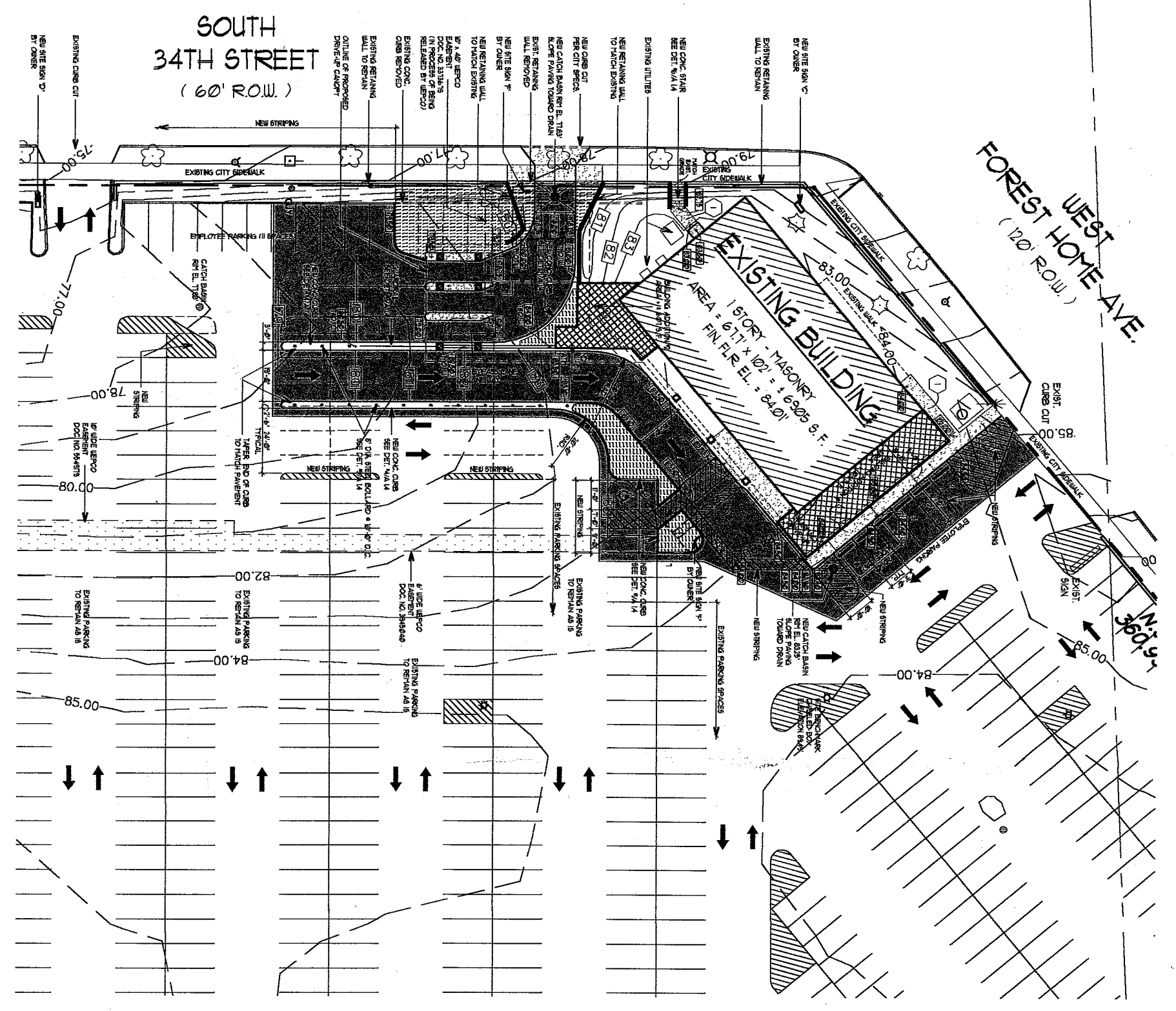


- PLAN NOTES**
- 1 NEW CONCRETE WALLS ON FINAL COMPACTED GRAVEL FILL WHERE ADJACENT TO ASPHALT PAVING. SEE SET 20A & 20B.
- LEGEND**
 (EXISTING UNLESS NOTED OTHERWISE)
- ⊗ STREET LIGHT POLE
 - ⊙ CATCH BASIN
 - ⊕ SPRINKLER "V"
 - MANHOLE
 - ⊖ FIRE HYDRANT
 - ☆ LIGHT POLE
 - POWER POLE
 - ⊘ TELEPHONE POLE
 - ⊙ GUY
 - ⊙ GUY WIRE
 - ⊙ HW
 - ⊙ MONITORING WELL
 - ☆ DECIDUOUS TREE
 - ☆ CONIFEROUS TREE
 - ▨ NEW ASPHALT PAVING
 - ▨ NEW LANDSCAPED AREA
 - ▨ NEW CONCRETE
 - 78- EXISTING CONTOUR
 - 80- PROPOSED CONTOUR
 - +132.2 PROPOSED SPOT ELEVATION
 - 122.1 TOP OF WALL
 - 122.1 TOP OF CURB
 - CONSTRUCTION LIMIT LINE



DETAILED SITE PLAN

SCALE: 1"=30'-0"



DETAILED SITE PLAN
 PROPOSED NEW FACILITY for:
AURORA CREDIT UNION & AURORA PHARMACY
 3355 WEST FOREST HOME AVENUE
 MILWAUKEE, WISCONSIN

haag miller, inc.
 Architects Engineers
 1350 Fourteenth Avenue
 Grandon, WI 53024-1990
 Telephone: (262) 376-7744
 Facsimile: (262) 376-9190
 COPYRIGHT 2002 © A. Miller/haag

REVISIONS	
NO.	DESCRIPTION

DATE: JAN. 4, 2002
 PROJ. NO: Y109191
 DRAWN BY: DSK
 CHECKED BY: DSK
 SHEET: A1.2
 OF 116 SHEETS

KEY	QTY.	BOTANICAL NAME	PLANTING SIZE	PLANTING HEIGHT
B1	X	Berberis Thunbergii	1"	2'-4"
CP	33	Berberis Thunbergii (Red Leaf) Barrier	1"	1"
EA	X	Eunithia Alata	2 1/2"	3'-5"
HA	2	Hesperaloe parviflora	4"	4"
BA	5	Banksia lanata	1 1/2"	2'
AR	X	Artemisia tridentata	1 1/2"	2'-3"
NS	3	Nyssa sylvatica	1 1/2"	3'
RA	X	Rhus typhina	2 GAL.	2'-5"
PA	X	Potentialia fruticosa	1 1/2"	2'
PF	X	Potentialia fruticosa	1 1/2"	2'-3"
PR	X	Potentialia fruticosa	1 1/2"	2'
PR	X	Potentialia fruticosa	1 1/2"	2'-4"
RA	X	Rhus typhina	1 1/2"	2'
VT	X	Viburnum trilobum	1 1/2"	3'
BI	X	Berberis Thunbergii	1 1/2"	3'
CB	80	Cornus bicolor	1 1/2"	6"
TO	X	Thuja occidentalis	1 1/2"	2'
TC	X	Thuja occidentalis	1 1/2"	2'-5"
TS	X	Thuja occidentalis	1 1/2"	3'
TH	X	Thuja occidentalis	1 1/2"	4'
JH	14	Juniperus horizontalis	1 1/2"	1 1/2"
TO	9	Thuja occidentalis	1 1/2"	3'-5"
JB	X	Juniperus scopulorum	1 1/2"	6'-10"
PS	X	Prunella sp.	1 1/2"	4'-6"
TT	X	Thuja occidentalis	1 1/2"	1 1/2"
AH	X	Aster hybridus	1 1/2"	1 1/2"
AS	X	Aster hybridus	1 1/2"	1 1/2"
MC	X	Malva coccinea	1 1/2"	1 1/2"
PH	X	Phlox paniculata	1 1/2"	2 1/2"
MP	1	Malva paniculata	1 1/2"	1 1/2"
HT	1	Hydrangea paniculata	1 1/2"	1 1/2"
GH	X	Gleditsia triacanthos	1 1/2"	3 1/2'-4 1/2'
GT	X	Gleditsia triacanthos	1 1/2"	3 1/2'-4 1/2'
FP	X	Forsythia intermedia	1 1/2"	6'
OR	X	Ornithoglossum fidele	1 1/2"	6'
PT	X	Potentialia fruticosa	1 1/2"	6'
BA	X	Banksia lanata	1 1/2"	6'
E	...	Existing Landscaping to Remain

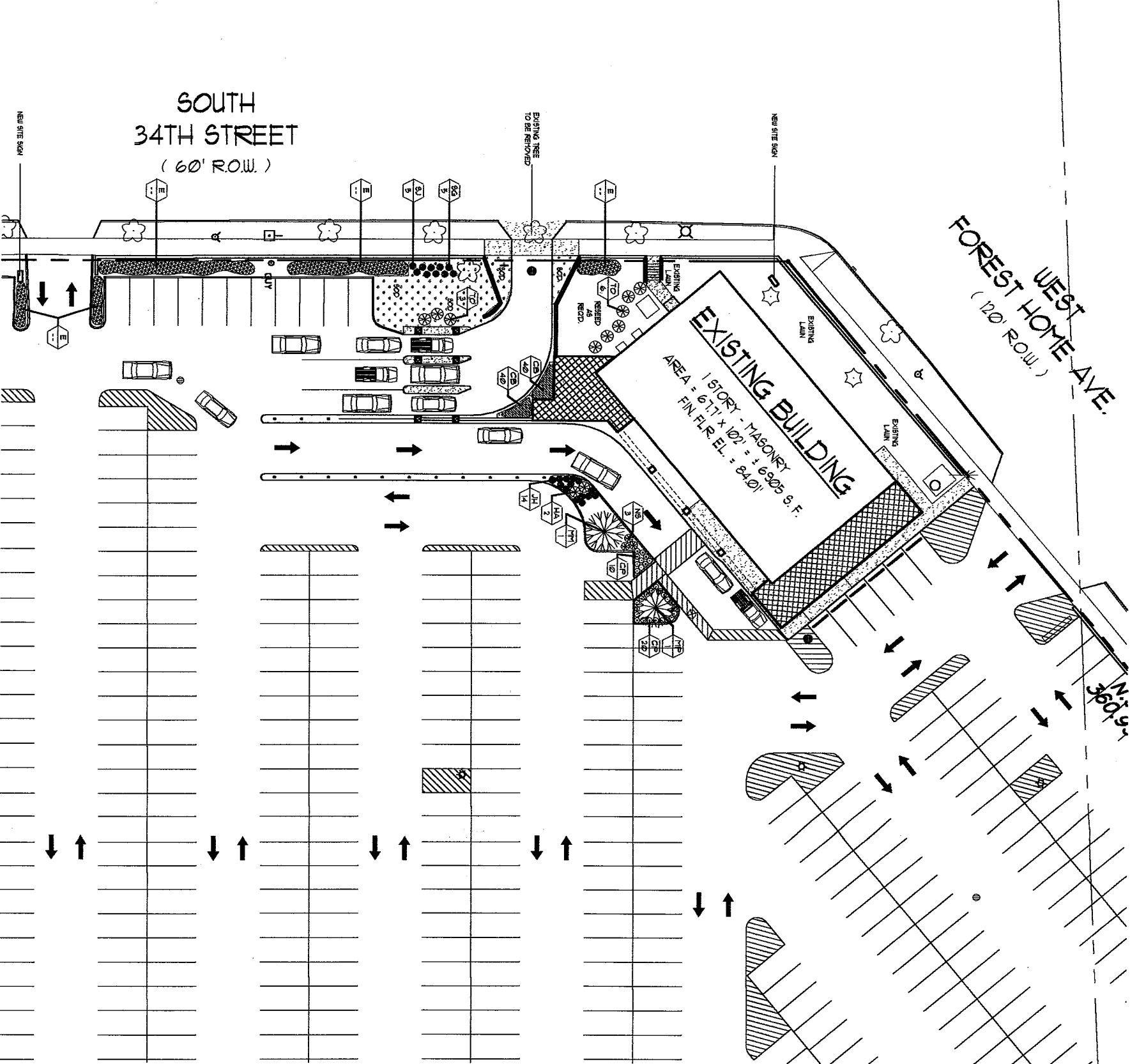
EXISTING DECISION TREES INDICATED THAT APPROX. XXXXX TREES TO REMAIN THROUGHOUT.

EXISTING ENGINEERS INDICATED THAT

EXISTING ENGINEERS INDICATED THAT

PLANT LIST GENERAL NOTES

U LETTER 'C' IN PLANTING SIZE COLUMN INDICATES CALIFORNIA



LANDSCAPE PLAN

SCALE: 1" = 10'-0"



LANDSCAPE PLAN

PROPOSED NEW FACILITY for:

AURORA CREDIT UNION & AURORA PHARMACY

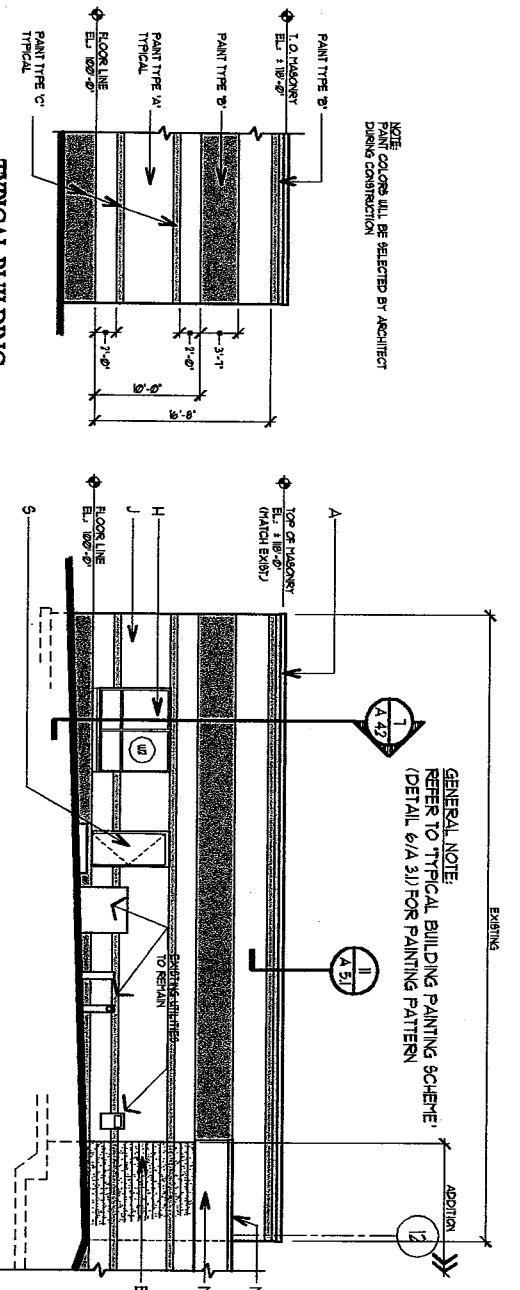
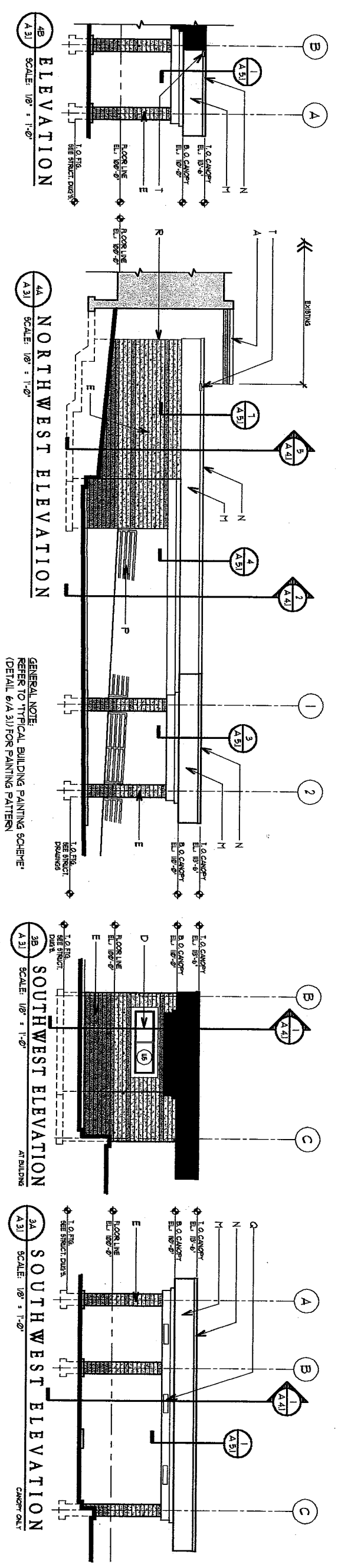
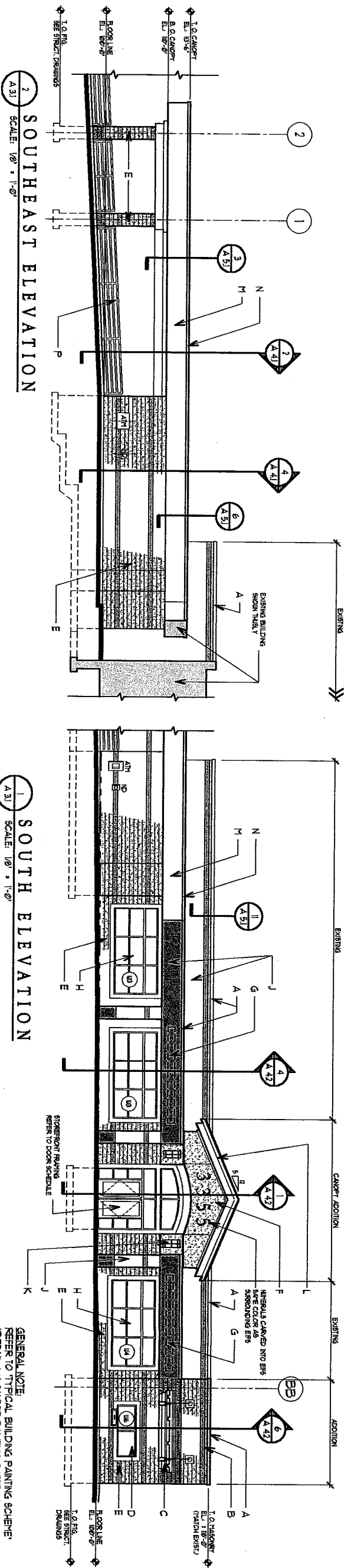
3355 WEST FOREST HOME AVENUE
MILWAUKEE, WISCONSIN

haag miller, inc.
Architects Engineers

1350 Fourteenth Avenue
Oshkosh, WI 53024-1990
Telephone: (920) 376-7144
Facsimile: (920) 376-9190
Copyright 2002 © Haag Miller

NO.	REVISIONS	
	DATE	DESCRIPTION

DATE: JAN. 4, 2002
PROJECT NO: 7109191
DRAWN BY: DSK
CHECKED BY:
SHEET: **A1.3**
OF (16) SHEETS

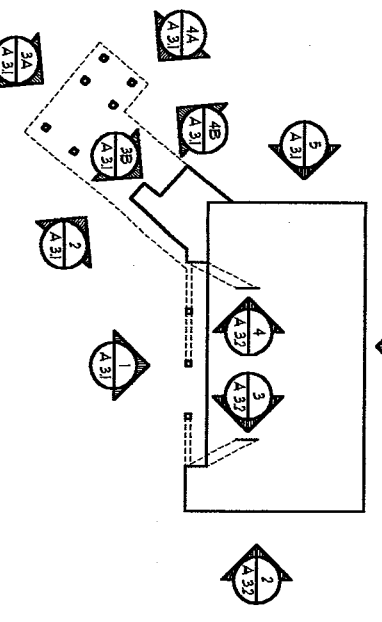


MATERIAL KEY

- A. PREFIN. VERTICAL COPING / LABORAL TEAL (COLOR)
- B. (1) ORAL OF SMOOTH FACE CONC. BLOCK
- C. PREFINISHED METAL GANTRY
- D. PREFIN. ALUM. DRIVE-UP WINDOW
- E. REBBD 9/16" FACE CONC. BLOCK TO MATCH EXISTING (PAINT)
- F. EXTERIOR INSULATION FINISH SYSTEM (EIFS) ON LIGHT GAUGE METAL RAILING
- G. BUILDING BRANDE BY OWNER
- H. PREFIN. ALUM. FRAMING w/ TINTED INSL. GLAZING
- J. EXISTING REBBD 9/16" FACE CONC. BLOCK (PAINT)
- K. DECORATIVE LIGHT FIXTURE - SEE ELEC. DWG'S
- L. PREFIN. STANDING SEAM VERTICAL ROOF FINISH / LABORAL TEAL (COLOR)
- M. PREFIN. VERTICAL PANELS / LABORAL TEAL (COLOR)
- N. PREFIN. VERTICAL FASCIA-COPING SYSTEM / LABORAL TEAL (COLOR)
- P. 3" DIA. VERTICAL TUBE GUARDROIL (PAINT)
- Q. RECESSED OPEN-CLOSED SIGN BY FINANCIAL EQUIPMENT SUPPLIER (ASSEMBLED UNIT - PHARMACY DRIVE-UP GANTRY)
- R. FILL w/ ROD & SEALANT
- S. HOLLOW METAL DOOR FRAME (PAINT)
- T. TRIM-HALL SCOPPER
- U. C.H.U. CONTROL JOINT - FILL w/ ROD & SEALANT

GENERAL NOTES:

- (10) INDICATES WINDOW TYPES - REFER TO SHEET 14.32



EXTERIOR BUILDING ELEVATIONS
PROPOSED NEW FACILITY for:
AURORA CREDIT UNION & AURORA PHARMACY
3355 WEST FOREST HOME AVENUE
MILWAUKEE, WISCONSIN

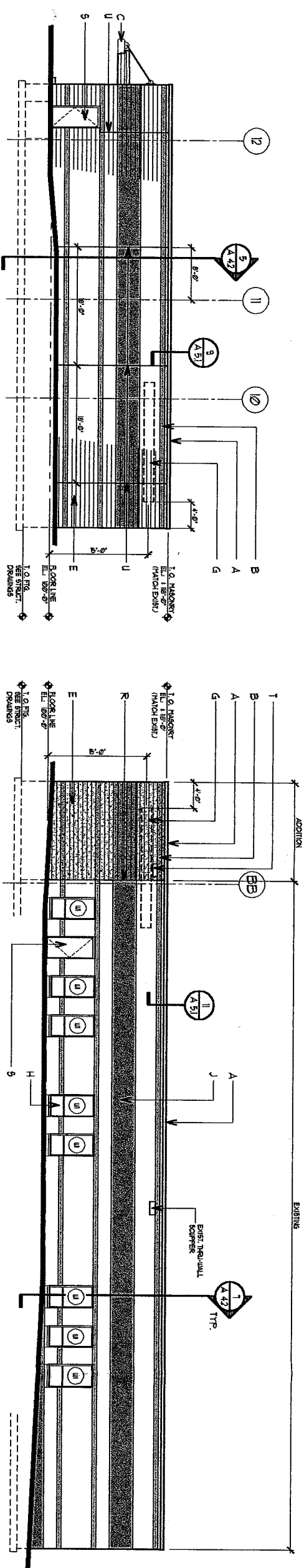
heag miller, inc.
Architects Engineers

1350 Fourteenth Avenue
Oshkosh, WI 53074-1990
Telephone: (920) 376-7744
Facsimile: (920) 376-9190
COPYRIGHT 2002 © All Rights Reserved

REVISIONS	
NO.	DESCRIPTION

DATE: JAN. 4, 2002
PROJ. NO: Y109191
DRAWN BY: DDK
CHECKED BY: DDK

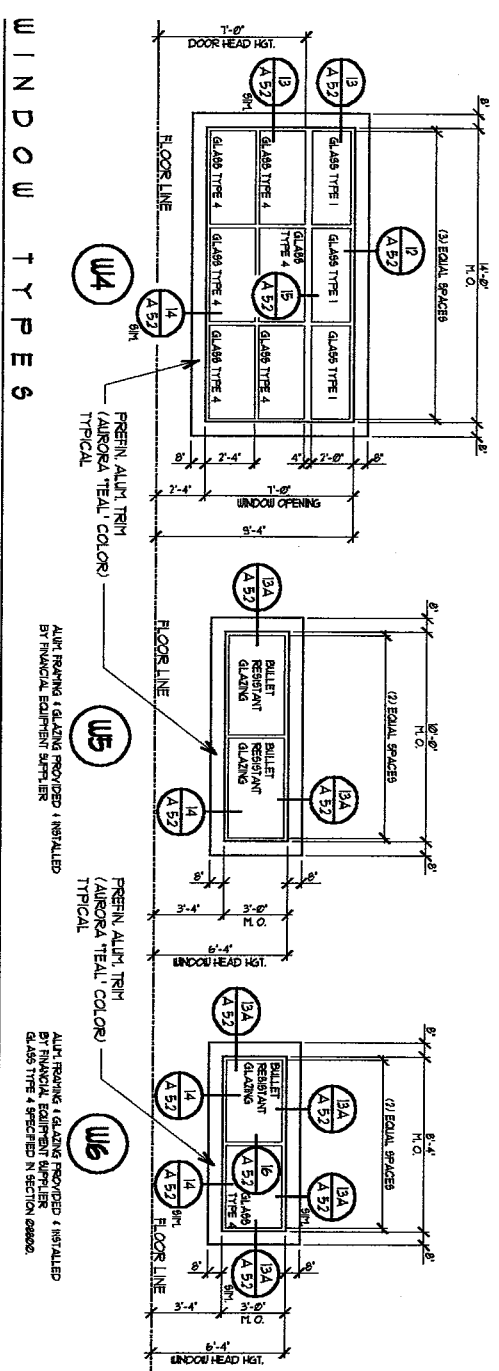
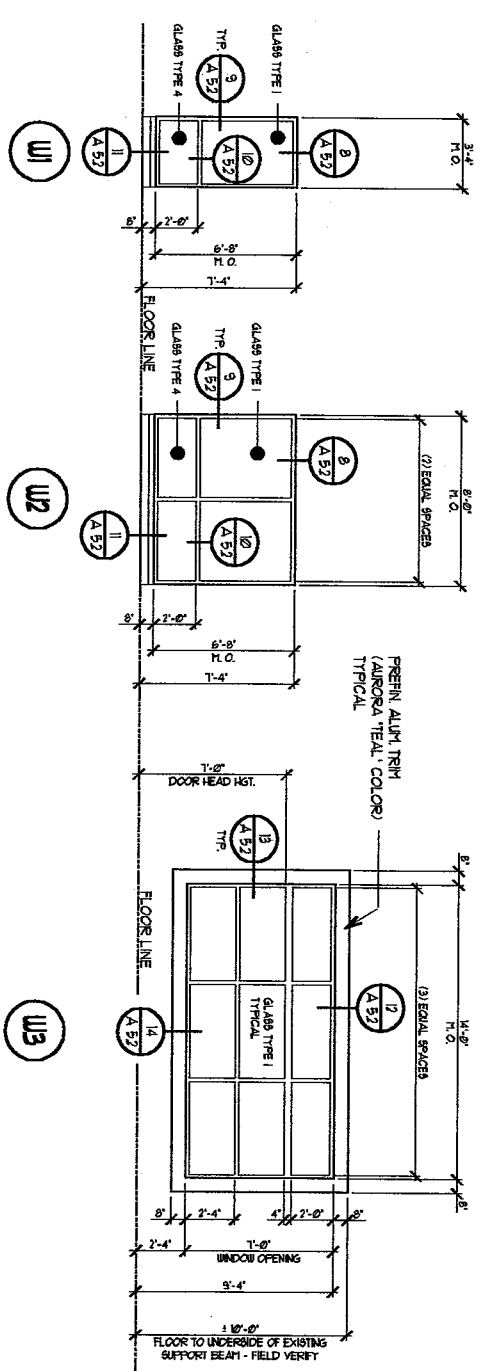
SHEET
A.3.1
OF (16) SHEETS



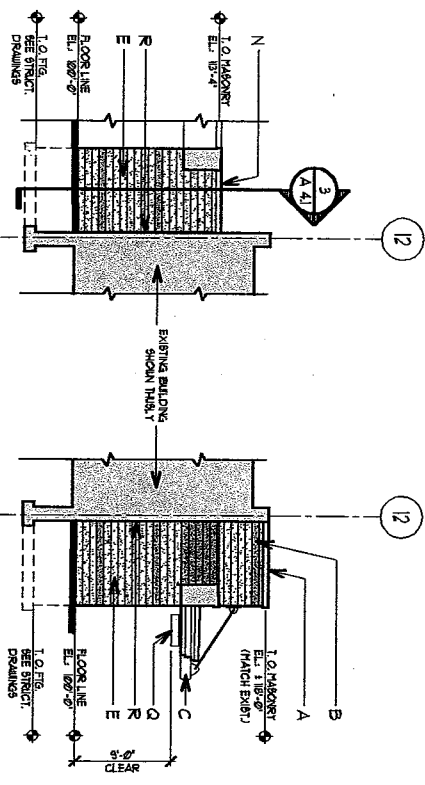
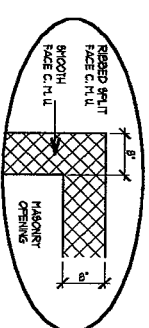
2 EAST ELEVATION
SCALE: 1/8" = 1'-0"

GENERAL NOTE:
REFER TO TYPICAL BUILDING PAINTING SCHEME (DETAIL 6/A.31) FOR PAINTING PATTERN

1 NORTH ELEVATION
SCALE: 1/8" = 1'-0"



- NOTES:
- 1) REFER TO SPECIFICATION SECTION 08400 FOR FINISHING
 - 2) REFER TO SPECIFICATION SECTION 08400 FOR GLAZING
 - 3) TO ALLOW FOR INSTALLATION OF ALUM. TRIM PAINT SURROUNDING WINDOW



4 ELEVATION
SCALE: 1/8" = 1'-0"

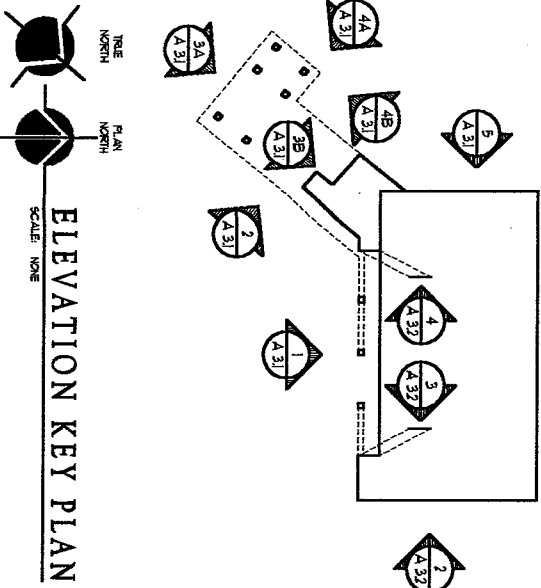
3 ELEVATION
SCALE: 1/8" = 1'-0"

MATERIAL KEY

- A PREEN METAL CORNER (AURORA TEAL COLOR)
- B (1) CRG. OF BRIGHT FACE CONC. BLOCK
- C PREENED METAL CANOPY
- D PREEN ALUM. DRIVE-UP WINDOW
- E RIBBED SPILT FACE CONC. BLOCK TO MATCH EXISTING (PAINT)
- F EXTERIOR INSULATION FINISH SYSTEMS ON LIGHT GAUGE METAL FRAMING
- G BUILDING SQUARE BY CURSER
- H PREEN ALUM. FINISH W/ TINTED NEAL GLAZING
- I EXISTING RIBBED SPILT FACE CONC. BLOCK (PAINT)
- J DECORATIVE LIGHT FINISH - SEE ELEC. DWG'S
- K PREEN STANDING SEAM METAL ROOF (PASA) (AURORA TEAL COLOR)
- L PREEN METAL PANELS (AURORA TEAL COLOR)
- M PREEN METAL SASH/CORNER SYSTEM (AURORA TEAL COLOR)
- N 3" DIA. METAL TUBE GUARDRAIL (PAINT)
- O RECEDED ORNAMENTAL SIGN BY FINANCIAL EQUIPMENT SUPPLIER (RECEDED UNIT + PLASTERED DRIVE-UP CANOPY)
- P FILL W/ ROOF + SEALANT
- Q HOLLOW METAL DOOR + FRAME (PAINT)
- R TRIM-WALL SCREWER
- S C.H.U. CONTROL JOINT - FILL W/ ROOF + SEALANT

GENERAL NOTES:

- (1) INDICATES WINDOW TYPES - REFER TO SHEET 14.32



ELEVATION KEY PLAN
SCALE: 1/8" = 1'-0"

EXTERIOR BUILDING ELEVATIONS
PROPOSED NEW FACILITY for:
AURORA CREDIT UNION & AURORA PHARMACY
3355 WEST FOREST HOME AVENUE
MILWAUKEE, WISCONSIN

haag miller, inc.
Architects Engineers
1350 Fourteenth Avenue
Oshkosh, WI 53024-1990
Telephone: (262) 376-7144
Facsimile: (262) 376-9190
COPYRIGHT 2000 © Haag Miller Inc.

REVISIONS	
NO.	DESCRIPTION

DATE: JAN 4, 2002
 PROJ. NO: Y109191
 DRAWN BY: DSK
 CHECKED BY:
 SHEET: A.3.2
 OF (16) SHEETS

DIVISION 8 - DOORS & WINDOWSSECTION 08800. GLAZINGPART 1 - GENERAL1.01 SCOPE

- A. Applicable provisions of Division 1 shall govern Work of this Section.

1.02 GENERAL

- A. In general, glazing shall consist of providing glass and glazing work for aluminum windows, vestibule glazing, the aluminum entrance system, doors, sidelights, interior hollow metal windows, glass shelving, as shown on drawings and specified herein.
- B. Order glass so irregularities or waves are horizontal. Label glass. Do not remove label until glass has been inspected and approved. Label shall show name of glass manufacturer, quality and nominal thickness of glass.
- C. Provide tempered or laminated glass where required by code and/or where shown on drawings.

1.03 MEASUREMENTS

- A. Responsibility for correctness of glass size shall be assumed by Glazing Contractor. Cooperate with others to determine sizes, clearance and details of openings and order glass as soon as possible!

1.04 GUARANTEE

- A. Warrant work to be waterproof.
- B. In addition to warranty specified above the manufacturer shall warranty the insulating glass units not to develop, under normal conditions, material obstruction of vision as result of dust or film formation on the internal glass surfaces caused by the failure of the hermetic seal other than glass breakage for a period of ten years after date of manufacture.

PART 2 - PRODUCTS2.01 MATERIALS

- A. Grading of glass shall conform to Federal Specification DD-G-451. Each piece of glass shall bear manufacturer's label indicating its quality. Provide glazing quality unless specified otherwise. Cut glass with smooth, straight edges to full sizes required by openings. All tinted glass shall be heat strengthened.
- B. Where noted here and on drawings, glass shall be as follows:
- | | |
|----------|--|
| Type 1 - | Insulated glass, one inch thick, consisting of 1/4 inch gray tint exterior, 1/2 inch air space, and 1/4 inch clear float glass interior. Low-E coating on #3 surface. 40% visible light transmittance. |
| Type 2 - | 1/4 inch gray tint glass. (Same as exterior lite of glass type 1). |

- Type 3 - Clear float glass, 1/4 inch thick.
 Type 4 - Spandrel glass, consisting of 1/4 inch heat treated glass with an opaque ceramic coating on the inside surface color as selected by Architect and factory applied 2 inch fiberglass insulation and aluminum foil vapor barrier with cut-back edges.
- C. Provide glazing accessories such as setting blocks, clips etc., as required to set glass according to manufacturer's directions.
- D. Glazing compound for glazing in metal members shall be sealants. Bed for sealants may be tapes.
- E. Sealants: Non-tack products of Pecora, Inc., Synthacalk GC-9; DAP one part acrylic sealant Tremco Manufacturing Co.'s Mono approved. Color as selected. Use clear silicone sealants at areas of butt glazing.
1. If primer or sealers are required, primer or sealer shall be applied as recommended by manufacturer.
- F. Gasket or tape glazing for metal bead glazing shall be considered for approval of Architect. Manufacturer of tape, methods of installation, shall be submitted for approval. Minnesota Mining and Manufacturing Company 3 MEC-1202, Protective Treatments, Inc., PTI #606 Butyl Tape Sealant, or Tremco Manufacturing Company Tremco 440, Pittsburgh 1082. Others must be submitted for approval. When lights exceed 100 united inches, light shall be shimmed 24 inches o.c. or preshimmed tape may be used.
- G. Contractor shall submit samples and manufacturer's specifications for gaskets, glazing compounds and sealants for Architect's approval not less than 30 days before glazing work is to be started.

PART 3 - EXECUTION

3.01 SETTING

- A. Unless otherwise specified, glass shall be prepared and installed and all glazing shall be installed in accordance with the Glazing Manual prepared by Flat Glass Marketing Association.
- B. Do glazing at job site. Do not set glass until rebates have been primed and priming is dry. Set glass with stops.
- C. Glazing compound and sealants shall be delivered to site in sealed containers. Compounds and sealants shall be used as mixed without additives. Compound may be heated to make it workable.
- D. Set glass so that it does not become load bearing and does not contact other materials except in glazing rabbet. When setting glass with tapes, press glass firmly into tape with slight lateral movement to assure proper adhesion. Except where required by details, tapes may be used only with Architect's approval. Set glass without springing. See that rabbets are clean and dry. Provide spacers at fixed and at removable stops, to hold glass from stops. Spacers shall be 3 inch long, spaced 24 inches o.c. and opposite each other. If tape glazing is used, set spacers not over 18 inches o.c. Compress tapes minimum of 30 percent.
- E. Before glazing members, remove from glazing surface material to which glazing compound will not adhere. Use full number of clips, blocks and wedges as recommended by glazing compound manufacturer.

- F. Cut compound or tapes evenly with frame and stop sections. Carefully make corners, remove excess compound and leave surfaces clean. Fasten movable sash and do not allow painting until glazing compound has set.
- G. Wherever glass occurs in stops or glazing beads, remove stops or glazing beads, set glass with tape on both sides of glass or in full bed of compound with back, bed and face sides well puttied. Then reset and fasten stops of glazing beads securely without damaging or soiling them.

3.02 BREAKAGE REPLACEMENT

- A. Replace cracked, broken or imperfect glass.
- B. Glazing Contractor shall be responsible for breakage due to faulty setting and he shall replace glass at his expense. In general, glass which is merely cracked shall be considered due to faulty setting and shall be replaced at Glazing Contractor's expense.

3.03 CLEANING

- A. At time of final cleaning of building and as directed by Architect, clean glazing compound droppings from window sills, walls, floors and other finished work. Clean compound droppings at completion of glass setting.
- B. General Contractor will remove label, clean and wash glass.

XXXXX