

S.W. 1/4 SEC. 13, T.8N., R.2E.

102

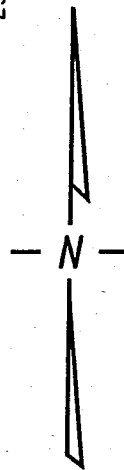
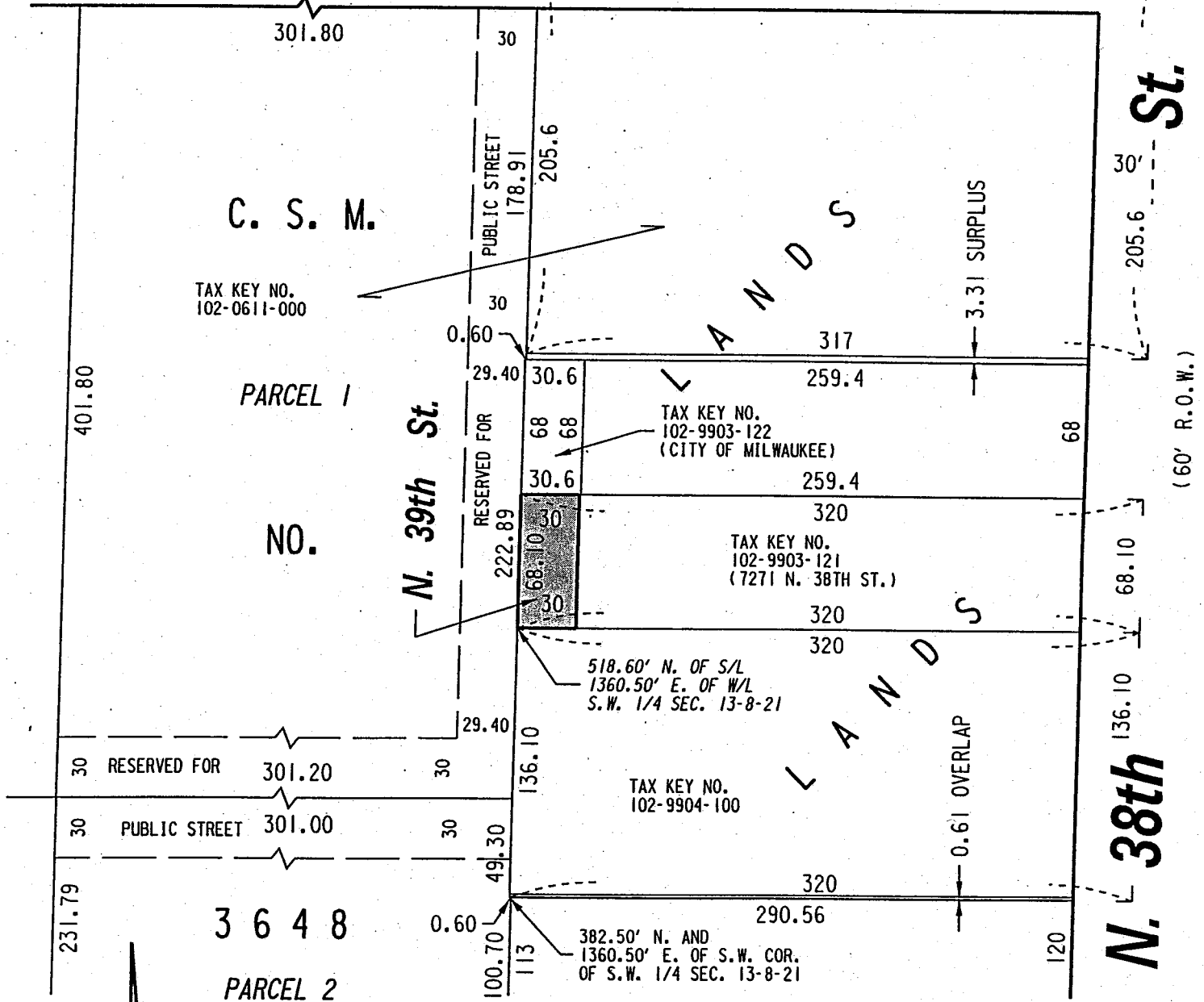
863.61' N. OF AND
1361.1' E. OF S.W. COR.
OF S.W. 1/4 SEC. 13-8-21

(60' R.O.W.)

W. Clinton

317

Ave.




 PORTION OF PUBLIC STREET PROPOSED TO BE VACATED

EXHIBIT "A"
FILE NO. 010061

INFRASTRUCTURE SERVICES DIVISION
MILWAUKEE, WISCONSIN

ASSIGNED TO: W.E. FUCHS

CH'K'D. BY: M.C. WILLIAMS

DRAWN BY: W.E.F.

DATE: MAY 31, 2001

PROJECT/GRANT NO.: WK52337132

SCALE: 1" = 80'

APPROVED BY:

Marcia Lindholm
CENTRAL DRAFTING & RECORDS MANAGER

James Colvoco
CITY ENGINEER