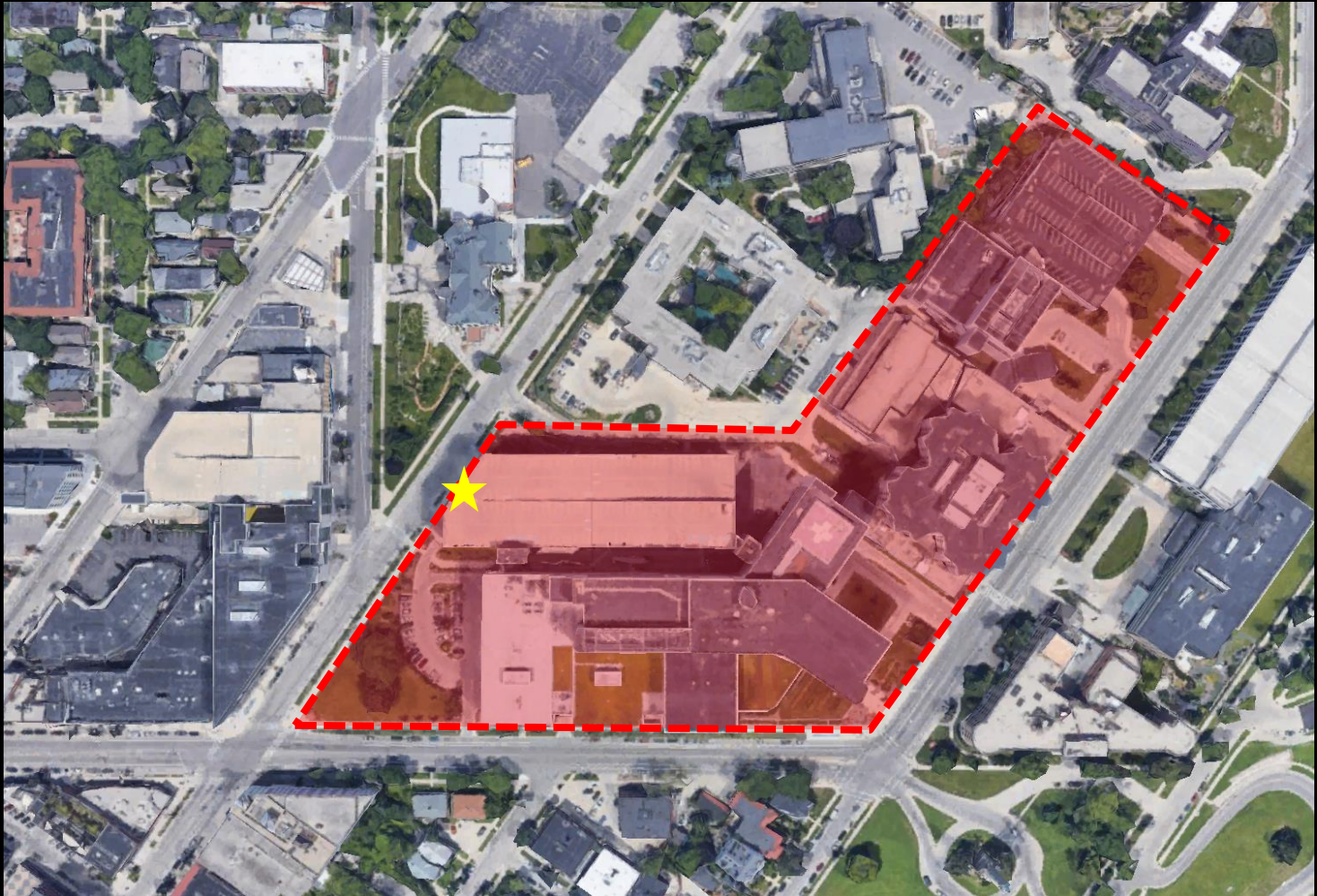
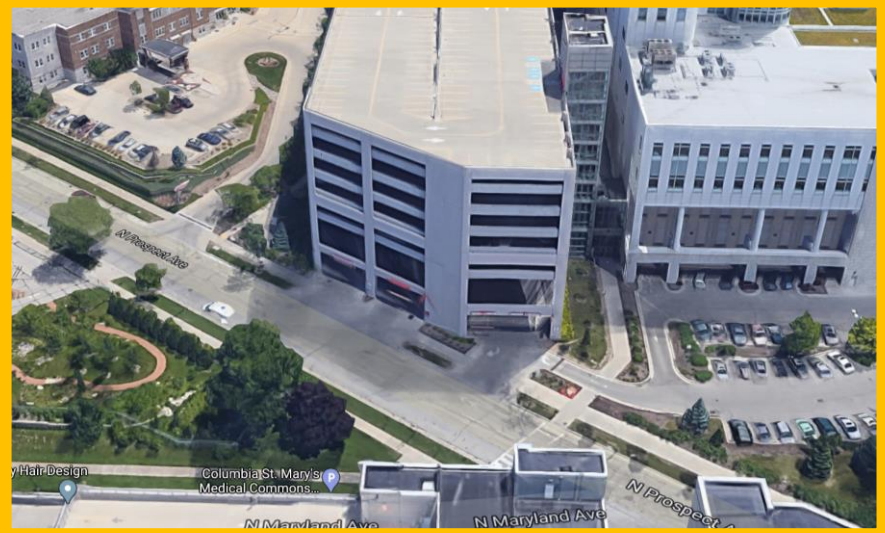


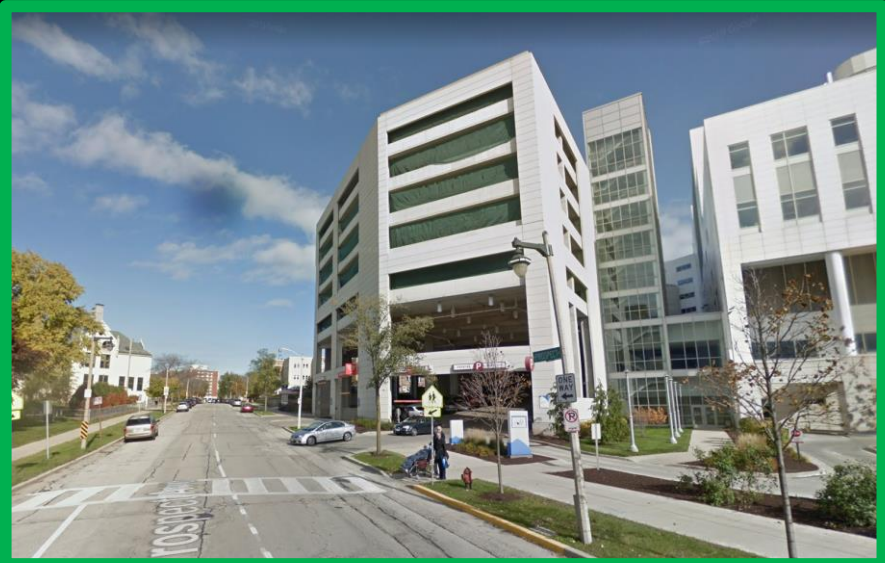
File No. 191822. Substitute resolution relating to a Minor Modification to the Detailed Planned Development known as Columbia St. Mary's Main Hospital to allow exterior changes to the existing parking structure located at 2318 North Prospect Avenue, on the north side of East North Avenue between North Prospect Avenue and North Lake Drive, in the 3rd Aldermanic District.



File No. 191822. Site Context Photos.



Aerial view looking east



Aerial view looking north-east



View from North Maryland Avenue looking east

EXHIBIT B





EXIT ONLY

PARKING P GARAGE A

P


Our Values
Service of the People
Respect
Integrity
Wisdom
Creativity

Parking Garage A
Michigan State University

EXHIBIT C-2



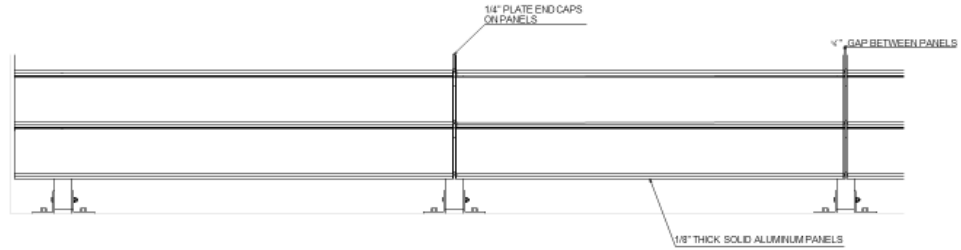
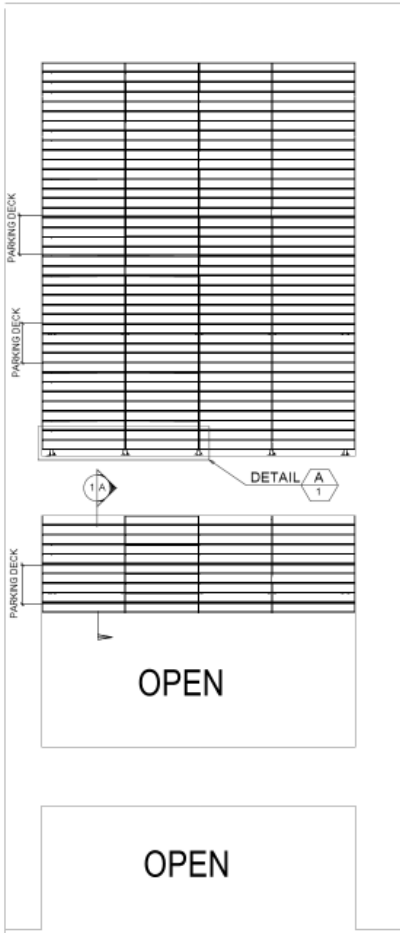
EXHIBIT C-3

SCOPE OF METAL PANEL ADDITION

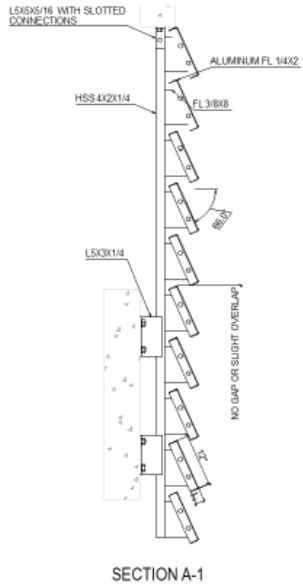


EXHIBIT D

Issue	Date



A DETAIL
1 Scale: 1"=1'-0"



STEEL FINISH	ALUMINUM FINISH (PANELS & BORDER)
HOT DIP GALVANIZED	EPOXY PRIMER
GARNET BLAST	VALSPAR CHAMPAGNE GOLD
EPOXY PRIMER	SHERWIN WILLIAMS CHAMPAGNE BRONZE
VALSPAR CHAMPAGNE GOLD	
SHERWIN WILLIAMS CHAMPAGNE BRONZE	

STATUS: SHOP PRINT

BADGER RAILING
3880 W. MILWAUKEE ROAD
MILWAUKEE, WI 53208
414.672.6090 (PHONE)
414.672.8700 (FAX)



Customer: C/G SCHMIDT
Project: CSM MAIN HOSPITAL PARKING DECK
2301 N. LAKE DR. MILWAUKEE, WI

Job No: 10829
Date: 1/7/2020
Drawn: TJM
Sheet: HORIZ OPTION

EXHIBIT E-1



Columbia St. Mary's Hospital - Perforated Solid Panel



EXHIBIT E-2



Columbia St. Mary's Hospital - Perforated Solid Panel