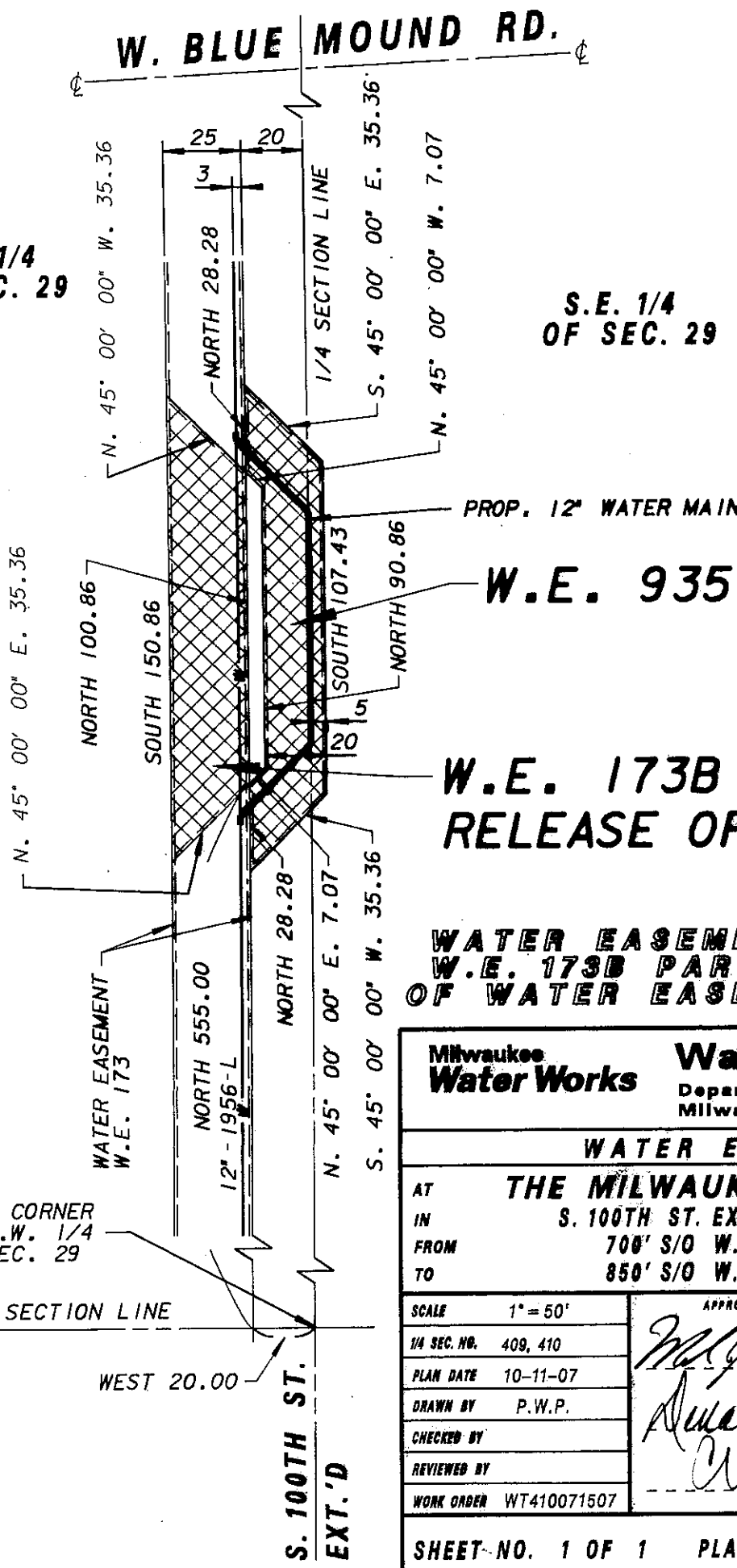


T. 7 N., R. 21 E.

W. BLUE MOUND RD.

S.W. 1/4
OF SEC. 29

S.E. 1/4
OF SEC. 29



PROP. 12" WATER MAIN

W.E. 935

W.E. 173B PARTIAL
RELEASE OF W.E. 173

WATER EASEMENT W.E. 935
W.E. 173B PARTIAL RELEASE
OF WATER EASEMENT W.E. 173

Milwaukee Water Works		Water Engineering	
		Department of Public Works Milwaukee, Wisconsin	
WATER EASEMENT			
AT	THE MILWAUKEE COUNTY ZOO		
IN	S. 100TH ST. EXT'D AND W.E. 173		
FROM	700' S/O W. BLUE MOUND RD.		
TO	850' S/O W. BLUE MOUND RD.		
SCALE	1" = 50'	APPROVED	DATE
1/4 SEC. NO.	409, 410	<i>McPherson</i>	10-18-07
PLAN DATE	10-11-07		MAING DESIGN ENGINEER
DRAWN BY	P.W.P.	<i>Amick</i>	10-18-07
CHECKED BY			CHIEF DESIGN ENGINEER
REVIEWED BY		<i>Mullen</i>	10/19/07
WORK ORDER	WT410071507		SPECIAL DEPUTY COMMISSIONER OF PUBLIC WORKS
SHEET NO. 1 OF 1		PLAN FILE NO. WE935	

S.E. CORNER
OF S.W. 1/4
OF SEC. 29

SECTION LINE

WEST 20.00

S. 100TH ST.
EXT.'D