

PROJECT
 New El Rey Grocery Store
 916 South Cesar Chavez Dr.
 Milwaukee, WI

PROJECT NO. 04-24

DATE 3/21/06

BID SET

REVISIONS

NO.	DESCRIPTION

CHECKED BY L.B.

DRAWN BY M.M.

SCALE as noted

SHEET NO. C1.0

SHEET TITLE
 New Site Plan

S. 16TH ST.

(66' WIDE PUBLIC R-O-W)

BENCHMARK FOR ELEVATIONS
 SEWER MANHOLE
 RIM ELEV. : 54.87'
 NORTH INVERT ELEV. : 41.90'
 CITY OF MILWAUKEE DATUM

SEWER MANHOLE
 RIM ELEV. : 56.22'
 INVERT ELEV. : 42.99'
 CITY OF MILWAUKEE DATUM

SEWER MANHOLE
 RIM ELEV. : 56.05'
 CITY OF MILWAUKEE DATUM

SEWER MANHOLE
 RIM ELEV. : 55.68'
 CITY OF MILWAUKEE DATUM

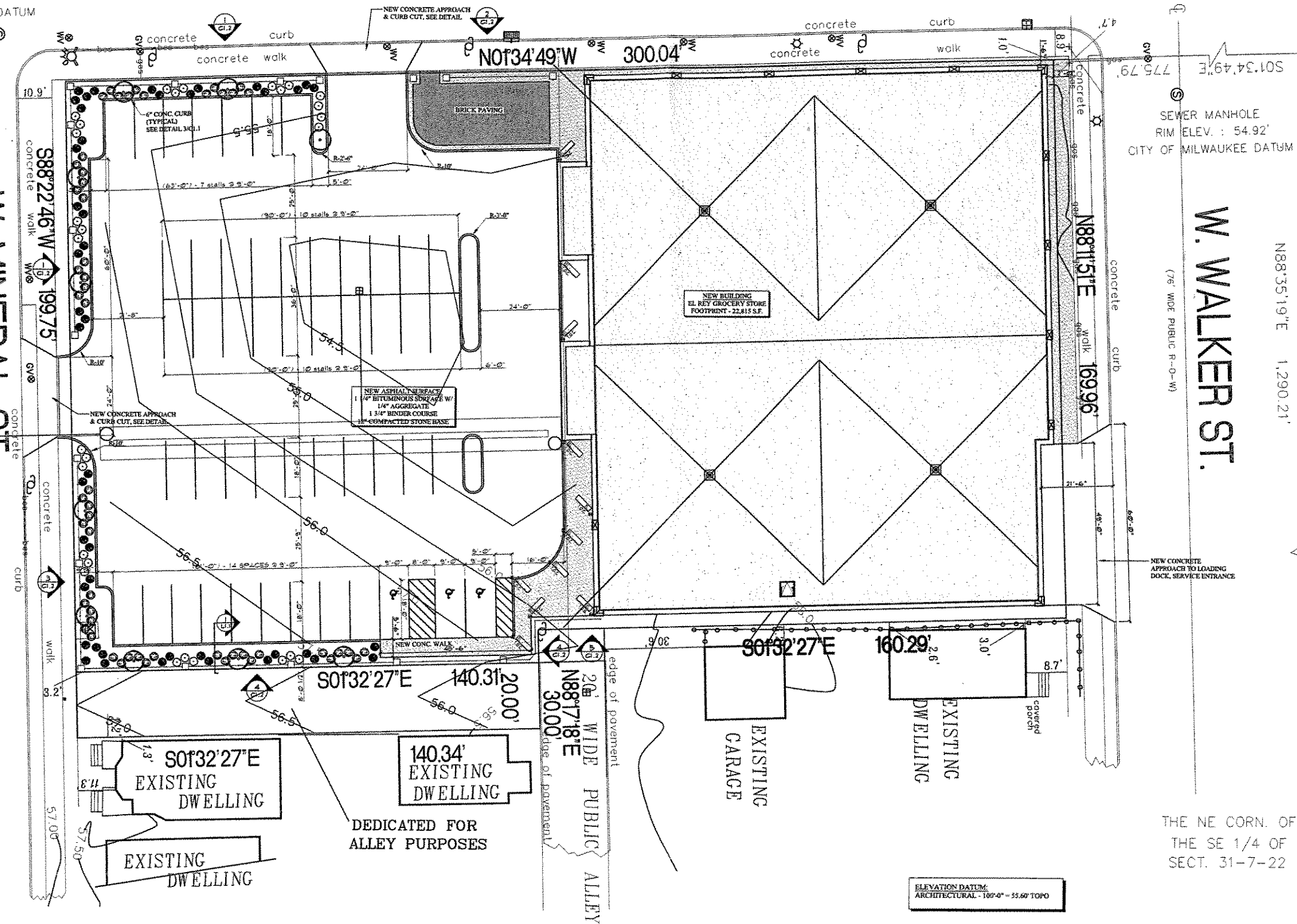
W. MINERAL ST.

(66.47' WIDE PUBLIC R-O-W)

W. WALKER ST.

(76' WIDE PUBLIC R-O-W)

SOUTHEAST 1/4 OF SECTION 31-7-22



THE NE CORN. OF
 THE SE 1/4 OF
 SECT. 31-7-22

ELEVATION DATUM:
 ARCHITECTURAL - 100'-0\"/>

1 New Site Plan
 Scale: 1/16" = 1'-0"

