



# CITYWIDE POLICY PLAN

---

2014  
Annual  
Report

January 2015



## **ACKNOWLEDGEMENTS**

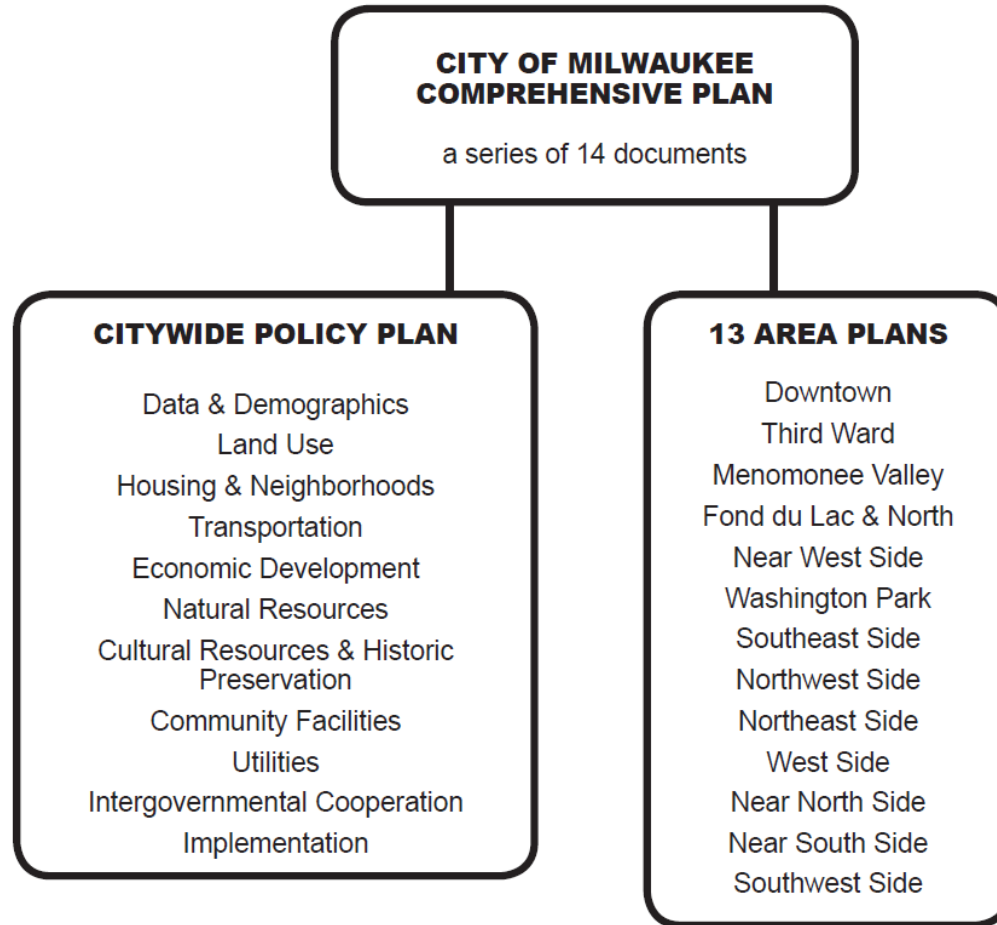
Information was compiled from numerous City departments

Department of City Development  
Department of Public Works  
Milwaukee Water Works  
Milwaukee Public Library  
Port of Milwaukee  
Milwaukee Health Department  
Department of Neighborhood Services  
Neighborhood Investment Development Corporation  
Milwaukee Economic Development Corporation  
Redevelopment Authority of the City of Milwaukee  
Department of Administration  
City of Milwaukee Budget Office  
Office of Environmental Sustainability  
Milwaukee Police Department  
Milwaukee Fire Department

**2014  
Annual  
Report**

January 2015

# Framework



## 2014 Annual Report



**CITYWIDE POLICY PLAN**

January 2015

# Planning Process

- Organized based on State of Wisconsin Smart Growth Required Elements
- Topical Advisory Workgroups met and reviewed each chapter, public open house held to gather input
- General policies to guide future development
- Consistent with City vision and mission
- Elements consistent with one another
- To be used by elected officials and city departments



**CITYWIDE POLICY PLAN**

**2014  
Annual  
Report**

January 2015



# Land Use

## Key Accomplishments

1. **Reed Street Yards development – infrastructure complete and announcement of Water Tech One building**
2. **Menomonee Valley 2.0 update to City's Comprehensive Area Plan is on target to be completed in early 2015.**
3. **Industrial Mixed Zoning change**

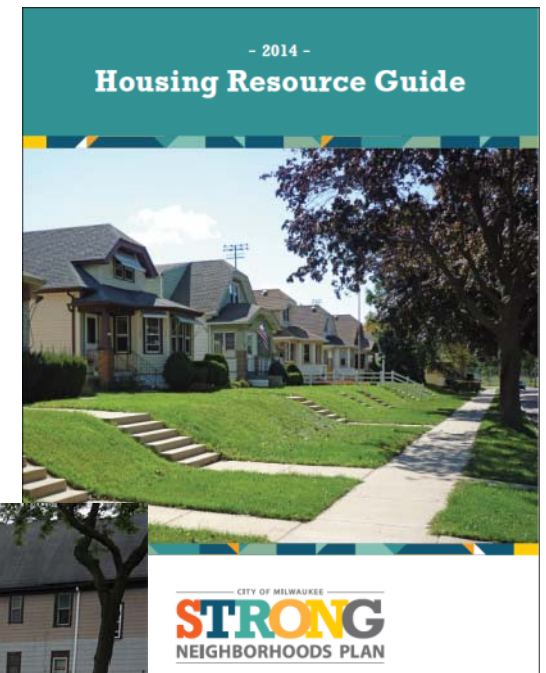




# Housing and Neighborhoods

## Key Accomplishments

1. Strong Neighborhoods Plan
2. Citywide Strong Home Loan prepared for launch in 2015
3. Home Gr/Own – Ezekiel Gillespie Pocket Park (14<sup>th</sup> and Wright)





# Transportation

## Key Accomplishments

1. BikeShare program – significant expansion in 2014 to 10 pilot stations
2. Streetcar
3. Bike & pedestrian improvements and connections



Photo: Dave Schlabowske, [www.wisconsinbikefed.org](http://www.wisconsinbikefed.org)



Photo: Dave Schlabowske, [www.wisconsinbikefed.org](http://www.wisconsinbikefed.org)

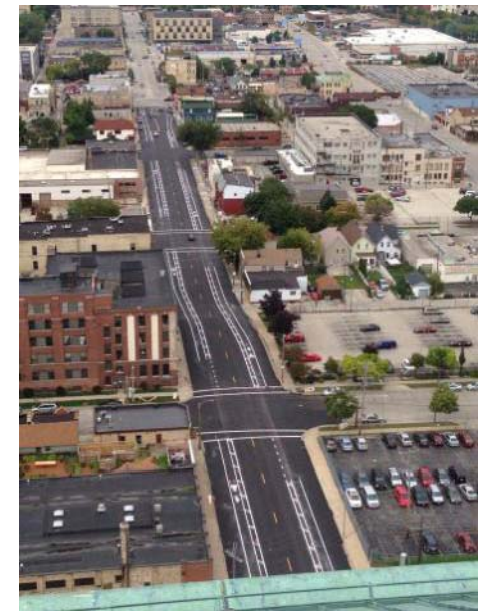


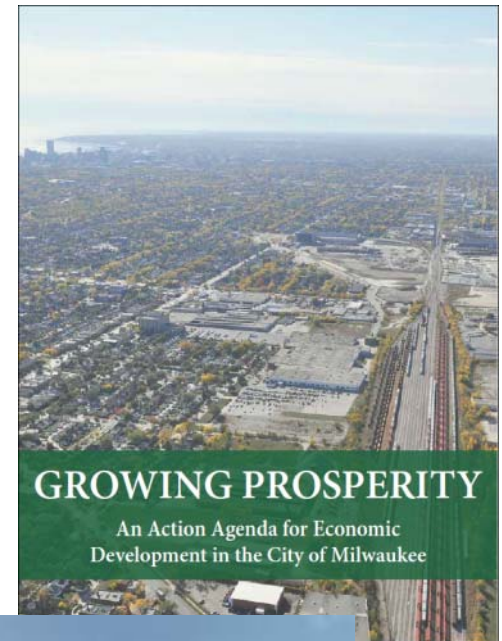
Photo: Barry Mainwood



# Economic Development

## Key Accomplishments

1. **Adoption of City 's Economic Growth Plan to nest within a regional plan**
2. **KIVA initiative**
3. **Establish 'Local Business Action Team' to focus on improving services to businesses**
4. **Century City – First 50,000 sf industrial building ground breaking in 2014**







# Natural Resources

## Key Accomplishments

1. **ReFresh Milwaukee, A Vision for Community Sustainability – first annual report – Progress made on 87% of target recommendations**
2. **Menomonee Valley's Three Bridges Park**
3. **Inclusion of sustainable elements within infrastructure projects**
  - Bioswales
  - 'Pave Drain' in parking areas





# Cultural Resources

## Key Accomplishments

1. **NIDC – Community Improvement Project program**
2. **Reuse of Garfield School – as part of Bronzeville Artist Housing Initiative**
3. **Milwaukee Arts Board – awarded grants totaling \$217,000 to 33 Milwaukee groups. Plus grants of \$22,381 for conservation of public art and new public art in 2014.**





# Community Facilities

## Key Accomplishments

1. Milwaukee Public Library addition of 24-hour express library at Westlawn Gardens along Silver Spring Drive at 64<sup>th</sup> Street.
2. Earn and Learn Program
3. Completion of mixed-use East library on North Avenue. Dedication of funding (\$18Million) to replace four additional branch libraries

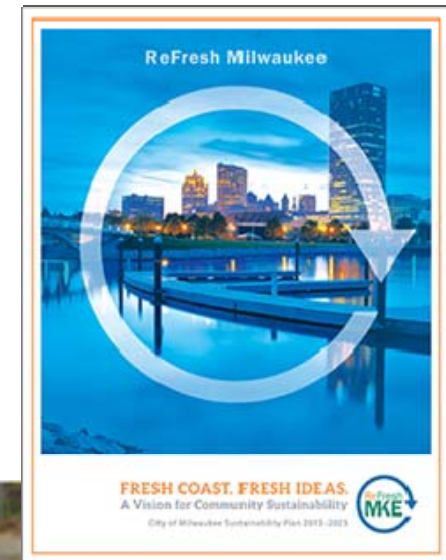




# Utilities

## Key Accomplishments

1. **ReFresh Milwaukee identifies multiple opportunities for improved water and energy usage.**
2. **Increased awareness of the importance of coordination of utility projects for large scale developments.**





# Intergovernmental Cooperation

## Key Accomplishments

1. **Lakefront Gateway project is a collaboration between various City departments, Wisconsin DOT, community partners and stakeholders to create a functional and meaningful gateway to the city that adds value to the City.**
2. **Continued regular work with DNR and other agencies to ensure efficient and best practices for Brownfield cleanup for redevelopment.**



# Questions?



## CITYWIDE POLICY PLAN

2014  
Annual  
Report

January 2015