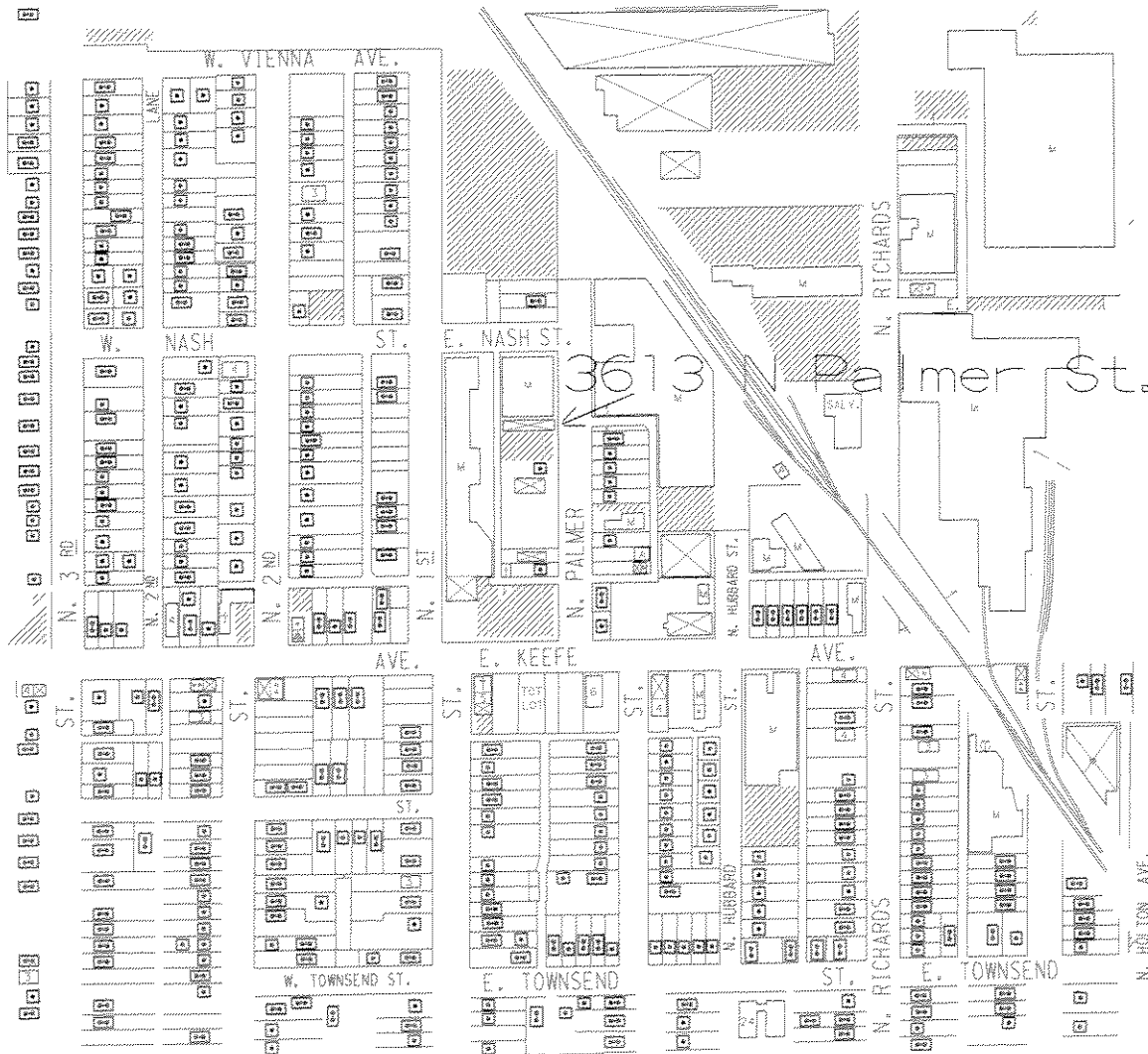


LAND-USE MAP OF THE AREA BOUNDED BY N. 3RD ST., W. VIENNA AVE., N. HOLTON AVE., AND W. TOWNSEND AVE. AS OF MAY 10, 2005



LEGEND

- Single-family dwelling
- Duplex
- Multiple-family dwelling (showing number of units)
- Rooming house
- ▲ Skilled-care group home
- ⊕ Church
- 📖 Non-public education
- ⊗ Commercial
- ⊗ Mixed commercial (more than one tenant)
- ★ Manufacturing
- ▨ Parking