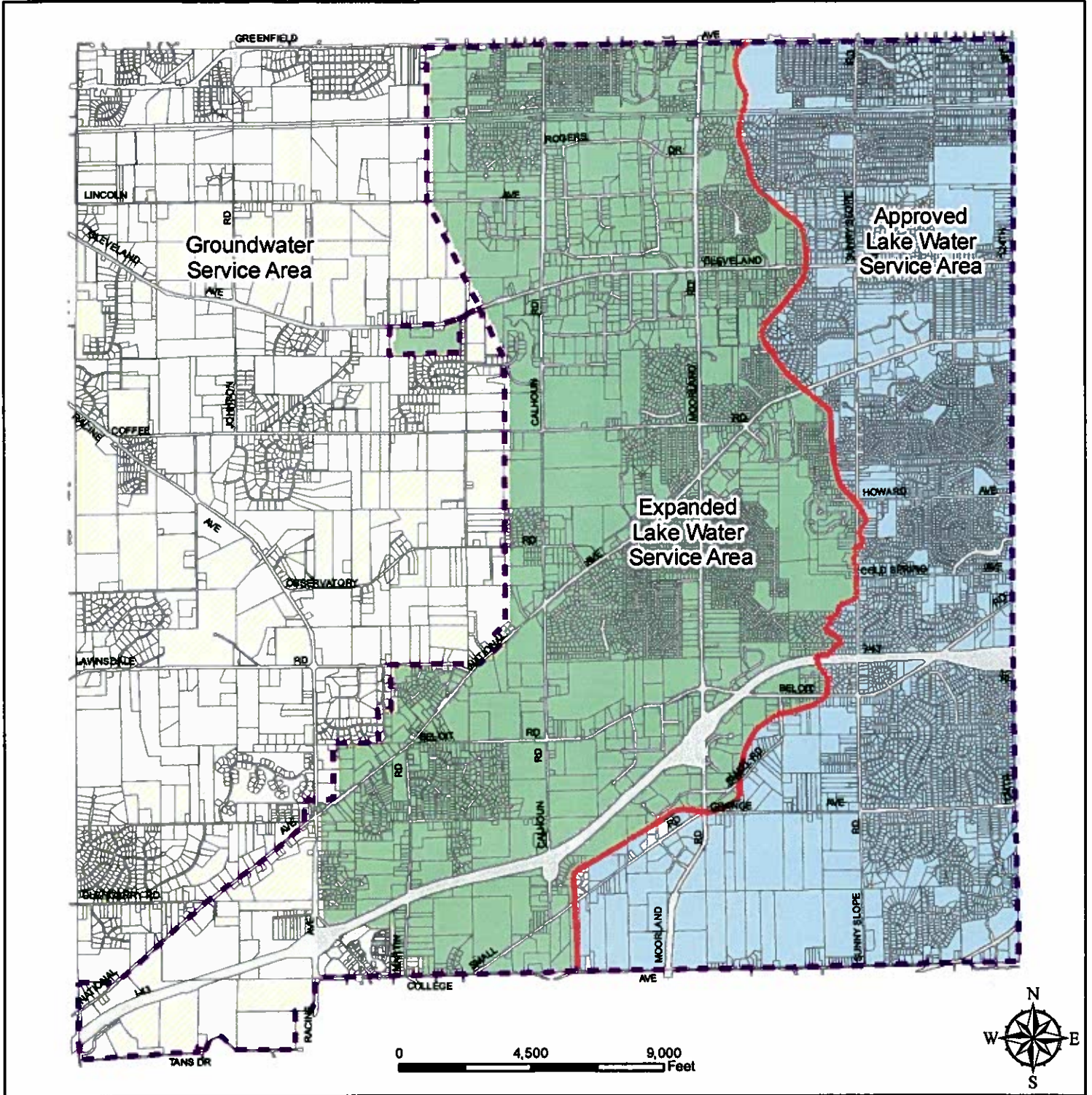






# Appendix A



	Approved Lake Water Service Area		2020 MMSD Planning Area
	Expanded Lake Water Service Area		Subcontinental Divide
Area to Remain on Groundwater			

File 080011



City of New Berlin Community Development  
 3805 S Casper Drive, New Berlin WI 53151  
 (262) 797-2445 www.newberlin.org