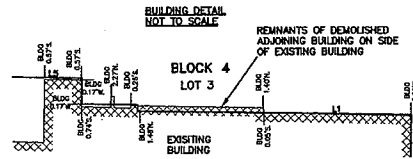


PARK EAST ON THE WEST SIDE OF THE MILWAUKEE RIVER

SITUATED ON WEST MCKINLEY AVENUE, CITY OF MILWAUKEE, MILWAUKEE COUNTY, WISCONSIN

BEING A DIVISION OF PART OF LOTS 6 AND 7 AND LOTS 10 THRU 13 AND ALL OF LOTS 1 THRU 5 AND LOTS 8, 9, 14, 15 AND 16 IN BLOCK 37, ALSO ALL OF LOTS 1 THRU 16 IN BLOCK 38, ALSO PART OF LOT 13 AND ALL OF LOTS 1 THRU 12 AND LOTS 14 AND 15 IN BLOCK 39, ALSO PART OF LOT 5 AND ALL OF LOTS 6 THRU 10 IN BLOCK 40, ALSO PART OF LOTS 1 THRU 14 IN BLOCK 129 AND VACATED ALLEYS AND STREETS ADJACENT IN PLAT OF THE TOWN OF MILWAUKEE ON THE WEST SIDE OF THE RIVER, ALSO PART OF LOTS 1 THRU 13 AND LOT 39 AND ALL OF LOTS 14 THRU 38 IN BLOCK 131 AND VACATED ALLEYS ADJACENT IN PLAT OF BLOCK 131 AND LANDS IN THE SOUTHWEST 1/4 OF THE SOUTHEAST 1/4 AND THE SOUTHEAST 1/4 OF THE SOUTHWEST 1/4 OF SECTION 20, AND THE NORTHWEST 1/4 OF THE NORTHEAST 1/4 OF SECTION 29, ALL IN TOWN 7 NORTH, RANGE 22 EAST, IN THE CITY OF MILWAUKEE, MILWAUKEE COUNTY, WISCONSIN.

Gregory A. Kunz
 May 12, 2005
 REV. 07/07/05

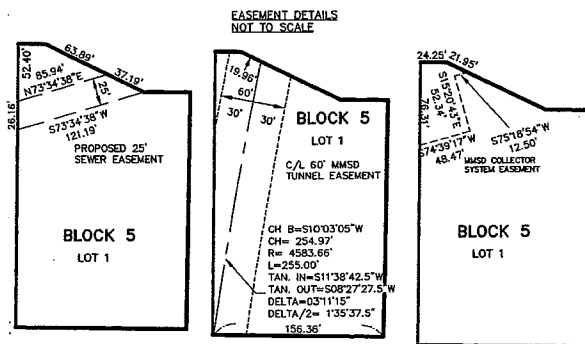


A	269°53'52"
B	90°00'20"
C	269°59'43"
D	90°00'17"
E	269°59'43"
F	270°00'17"
G	90°00'05"
H	127°17'19"
I	142°42'36"
J	146°28'34"
K	124°40'50"
L	158°25'35"
M	110°24'23"
N	180°20'51"
O	109°01'57"
P	102°23'20"
Q	90°28'22"
R	174°00'26"
S	85°31'22"
T	136°52'54"
U	137°28'44"
V	162°33'33"
W	106°24'26"
X	141°31'43"
Y	108°46'57"
Z	180°19'45"
AA	191°22'33"
BB	285°14'13"
CC	184°51'09"
DD	90°05'22"
EE	154°49'20"
FF	205°10'40"
GG	89°24'34"
HH	180°25'48"
II	179°39'47"
JJ	179°54'44"

KK	97°52'03.5"
LL	90°27'32"
MM	181°33'51"
NN	177°36'05.8"
OO	270°24'31.4"
PP	85°19'20"
QQ	142°57'28"
RR	129°40'34"
SS	87°48'07"
TT	92°11'53"
UU	90°30'57"
VV	70°18'40"
WW	89°23'15"

LINE	LENGTH	BEARING
L1	78.548	N89°08'54"W
L2	1.740	N00°49'46"E
L3	15.430	N89°08'57"W
L4	7.200	N00°49'46"E
L5	61.500	N89°08'57"W

CURVE	CHORD BEARING	CHORD LENGTH	RADIUS	DELTA	TANGENT IN	TANGENT OUT	DELTA / 2
C1	N71°50'12.5"W	234.341	1237.203	440.00	305.317	N87°16'36"W	N56°23'39"W
C2	S89°43'20"E	381.253	384.240	888.51	2446.40	S76°20'06"E	N76°53'20"E
C3	N84°52'54"E	134.932	135.178	646.20	1159.08	N78°53'20"E	S89°07'32"E
C4	S78°57'56.5"E	127.285	127.734	440.00	1637.59	N87°16'36"W	N70°38'56"W
C5	S89°16'59"E	20.978	20.978	440.00	243.54	N70°38'56"W	N67°55'02"W
C6	S62°02'20"E	88.342	88.481	440.00	1131.25	N67°55'02"W	N56°23'39"W
C7	S77°34'30.5"E	38.511	38.515	888.51	0229.01	S76°20'06"E	S78°49'01"E
C8	S89°17'50.5"E	343.549	345.725	888.51	2217.59	S78°49'01"E	N78°53'20"E
C9	S70°53'13"E	327.597	330.522	716.20	2626.30	S57°38'58"E	S84°06'28"E
C10	S86°27'28.5"E	58.899	58.916	703.70	0447.49	S84°03'34"E	S88°51'23"E
C11	S87°17'32"E	39.782	39.787	728.70	0307.42	S85°43'41"E	S88°51'23"E



SETBACKS
 SITE IS ZONED - CSR (A)
 FRONT SETBACK - NO REQUIREMENT
 SIDE SETBACK - NO REQUIREMENT
 REAR SETBACK - NO REQUIREMENT

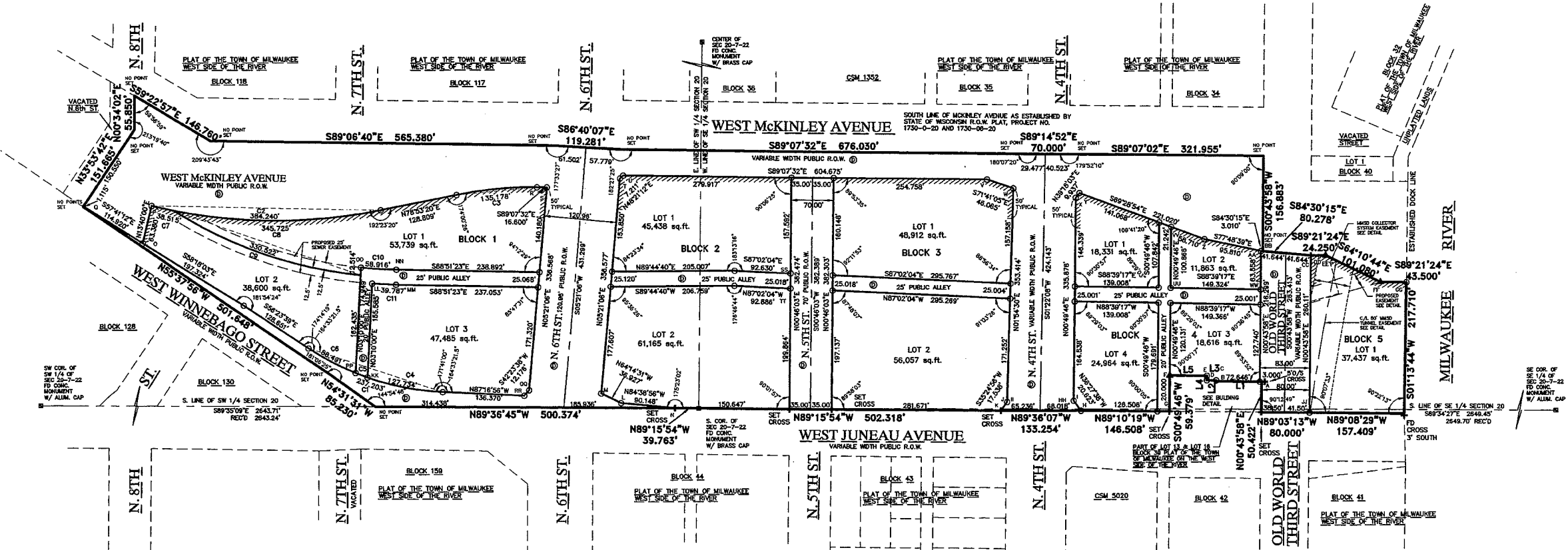
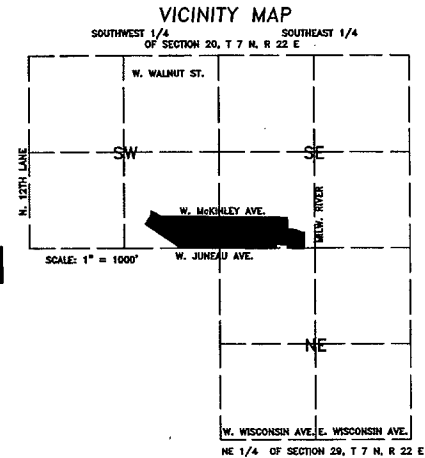
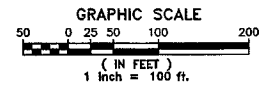
LEGEND

○ INDICATES 1.27" REBAR, WT. 4.303 LBS. PER LINEAL FOOT, 30" IN LENGTH, SET.
 ALL OTHER LOT CORNERS HAVE 1"(1.315" O.D.)x18" IRON PIPES WT. 1.88 LBS. PER LINEAL FOOT. SET
 ALL DIMENSIONS MEASURED AND SHOWN TO THE NEAREST HUNDRETH OF A FOOT
 BEARINGS ARE BASED ON THE SOUTH LINE OF THE SE 1/4 OF SECTION 20, TOWN 7 NORTH, RANGE 21 EAST, WHICH IS ASSUMED TO BEAR SOUTH 89°34'27" EAST.

+ INDICATES CHISELED CROSS
 ▲ INDICATES PK NAIL (FOUND)

Ⓧ INDICATES DEDICATED TO THE CITY OF MILWAUKEE FOR PUBLIC STREET OR ALLEY PURPOSES

/// INDICATES NO RIGHTS OF ACCESS



National Survey & Engineering
 262-781-1000
 Fax 262-797-7373
 16745 W. Bluemound Road
 Suite 200
 Brookfield, WI 53005-5938
 www.nsae.com

S:\5162009\dwg\PF100D1H.dwg
 PF100D1H.dwg\PF100D1H
 SHEET 1 OF 2 SHEETS

PROJECT NO. 162009
 THIS INSTRUMENT WAS DRAFTED BY GREGORY A. KUNZ, RLS 1346