

File No. 211865. A substitute ordinance relating to the change in zoning from Industrial Office, IO2, and Two-Family Residential, RT3, to Parks, PK, for the reconstruction and expansion of an existing totlot on the properties located at 3814 and 3840 North 29th Street, and 2900 and 3010 West Hopkins Street, on the south side of West Melvina Street, north of West Hopkins Street, in the 7th Aldermanic District.



File No. 211865. Site context.



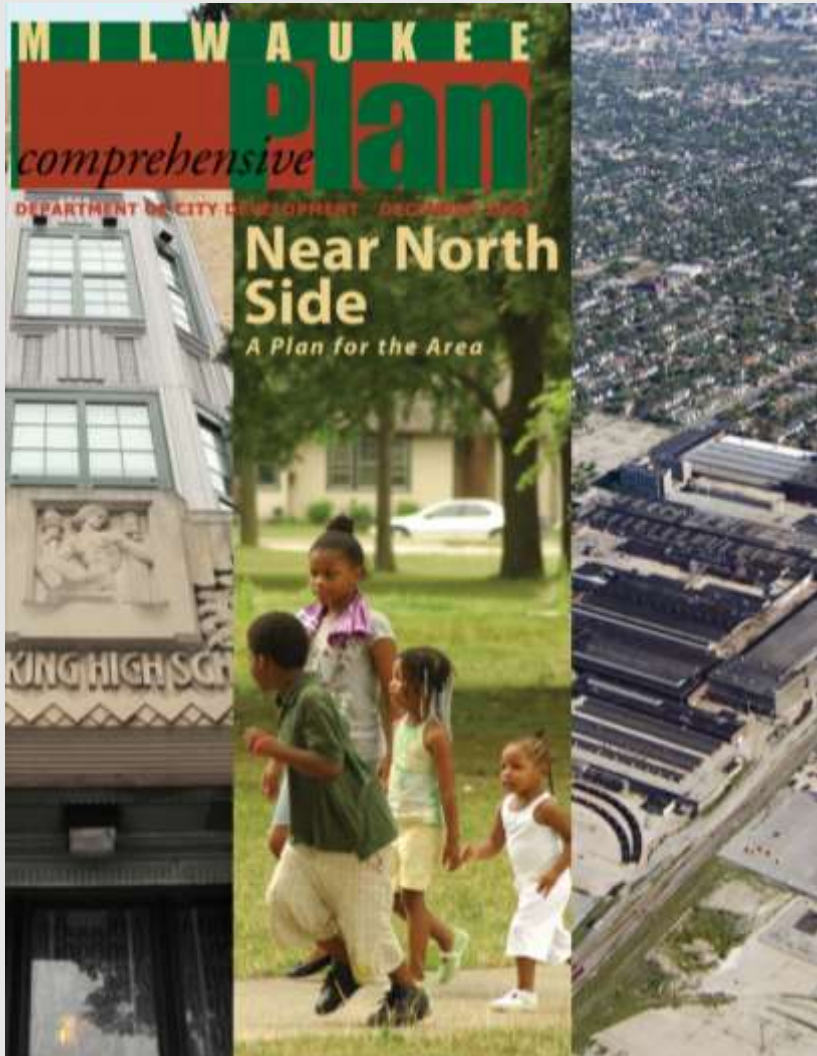
View from W Melvina St looking south



View from W Hopkins St looking east



View from W Hopkins St looking northeast



Near North Side Area Plan

- Adopted in 2009, amended in 2020 with the Connecting the Corridor Strategic Action Plan (CTC).
- The reconstruction and expansion of the 29th and Melvina Park is one of the projects outlined in the CTC Plan.
- The zoning change is directly supported by the Near North Side Area Plan.

The Connecting the Corridor Plan includes 45+ projects. Here are a few of the projects that are likely to be implemented in the near term.

N. 20TH STREET TRAIL

What and Why? The proposed shared use path would follow the existing WE Energies powerline corridor along N. 20th St., beginning near Olive Street at William Ira Gore Park and running north to Villard Ave. Construction of this trail reduce disparities in trail access and allow neighborhood residents to more easily access the parks at both ends of the trail.

Implementation Timing: The City was awarded a grant in September 2020, so the process is just beginning. The trail is expected to be completed by the end of 2024.



"There aren't any safe trails near my neighborhood; a new trail that I don't have to drive to would be nice."

MMSD West Basin

What and Why? This is the third and largest of a system of three dry stormwater basins in the 30th Street Corridor. This basin system is designed to significantly reduce stormwater flooding and accommodate stormwater up to the amount expected in a 100-year storm event.

Implementation Timing: MMSD and community partner NWSCDC will continue to engage with the community in 2020 and 2021 to receive input on features to include at the basin and amenities that could be developed in the green space north of the basin. Construction will take place in 2022-2024 (approx. two year duration)



"At the West Basin green space, I would like to see public art, community gardens, paved and natural trails, and access to waterways."

N. 35TH STREET TRAFFIC SAFETY IMPROVEMENTS & RECONSTRUCTION

What and Why? There are a few projects on N. 35th St. A Traffic Safety Improvements project planned from W. Capitol Dr. to W. Townsend St. will reduce speeds and provide safer accommodations for people walking, biking and taking transit. N. 35th Street from the West Basin project to Capitol Dr. will be fully or partially reconstructed for stormwater management which provides an opportunity for traffic safety improvements.

Implementation Timing: Construction for Traffic Safety Improvements from W. Capitol Dr. - W. Townsend St. is expected in 2021. Reconstruction of N. 35th St. from the West Basin to W. Capitol Dr. is expected between 2022.



"We need to make it safer for people, especially children, to safely cross busy streets."

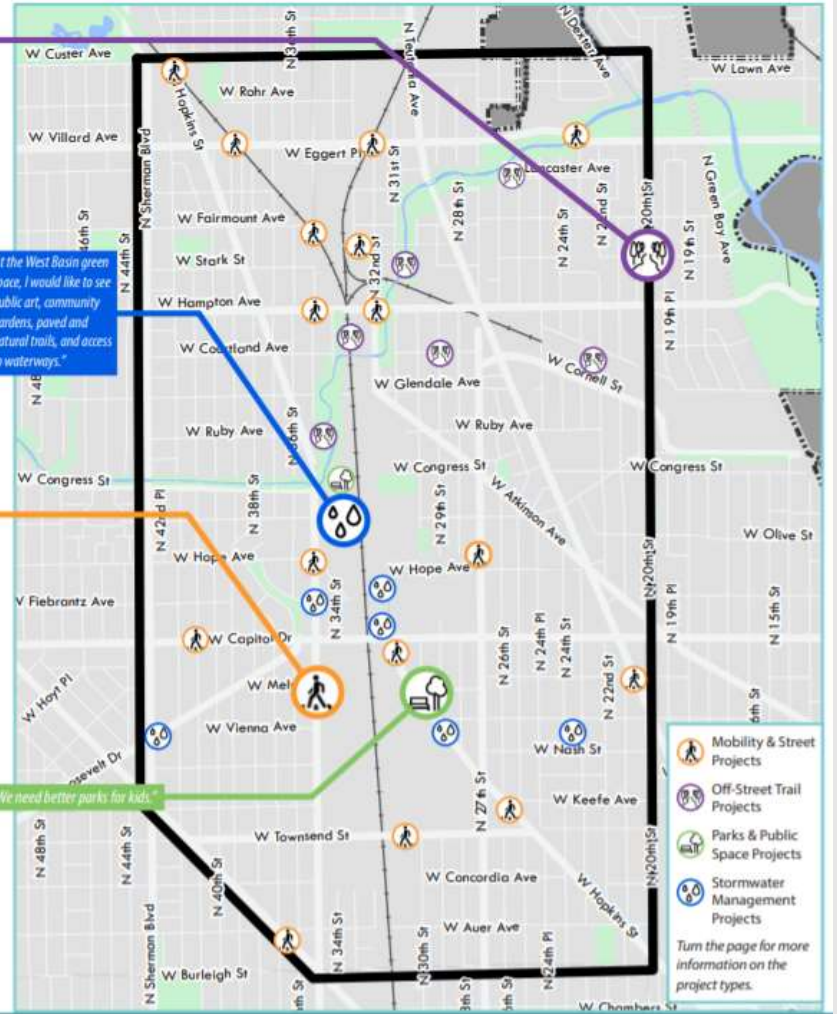
29TH & MELVINA PARK

What and Why? This project will transform an aging neighborhood park and brownfield into a larger park with community-driven design and expanded amenities. Century City Tri-Angle Neighborhood Association was formed in 2010 and has repeatedly demonstrated their commitment to enhancing their community's quality of life. 29th and Melvina Park is the heart of the neighborhood and is being redesigned at the direction of the community and in collaboration with many stakeholder groups.

Implementation Timing: Continued community outreach, design, engineering in 2020. Construction is expected to begin in spring 2021.



"We need better parks for kids."



Mobility & Street Projects

Off-Street Trail Projects

Parks & Public Space Projects

Stormwater Management Projects

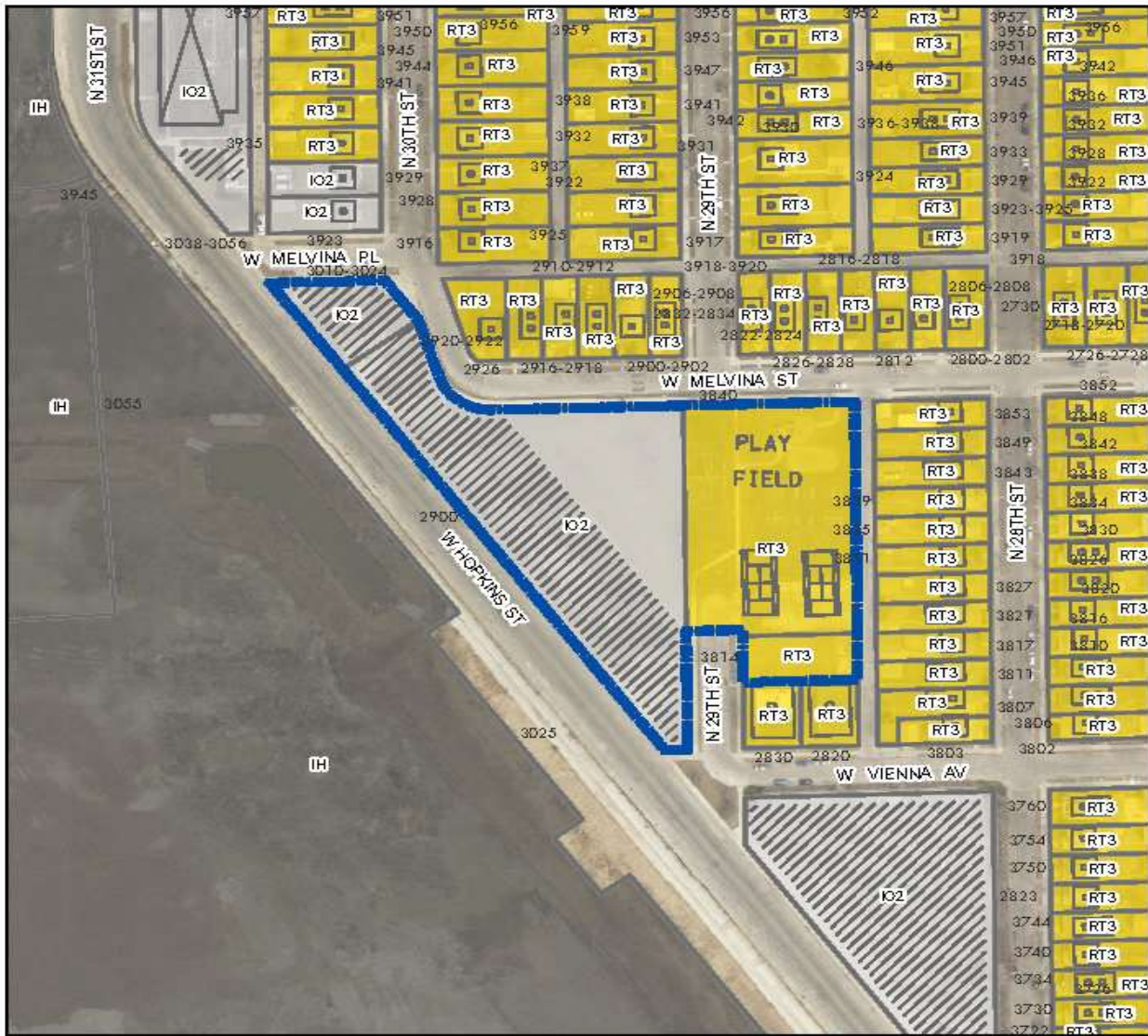
Turn the page for more information on the project types.

File # 211865

A substitute ordinance relating to the change in zoning from Industrial Office (IO2) and Two-Family Residential (RT3) to Parks (PK) for the reconstruction and expansion of an existing totlot on the properties located at 3814 and 3840 North 29th Street, and 2900 and 3010 West Hopkins Street, on the south side of West Melvina Street, north of West Hopkins Street, in the 7th Aldermanic District.



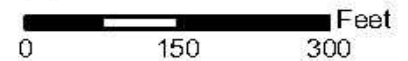
EXPANDED PARK BOUNDARIES



File No. 211865
 3814 and 3840 N. 29th St
 & 2900 and 3010 W. Hopkins St
 IO2 and RT3 to PK

Legend

-  Zoning Change Boundary
-  Unknown or pending zone
- Zoning Category**
-  Residential - single family
-  Residential - two family
-  Residential - multi-family
-  Residential - residence and office
-  Central business district - civic activity
-  Central business district - high-density residential
-  Central business district - major retail
-  Central business district - mixed activity
-  Central business district - neighborhood retail
-  Central business district - office and service
-  Central business district - residential and specialty use
-  Central business district - warehousing and light manufacturing
-  Commercial - neighborhood shopping
-  Commercial - local business
-  Commercial - commercial service
-  Commercial - regional business
-  Industrial - commercial
-  Industrial - office
-  Industrial - light
-  Industrial - mixed
-  Industrial - heavy
-  Special - parks
-  Special - institutional
-  Special - planned development
-  Special - redevelopment district



PROPOSED SITE PLAN MELVINA PARK



CONCEPTUAL RENDERING – MELVINA PARK



CONCEPTUAL RENDERING – MELVINA PARK



Melvina Park Partners and Funding Sources

- **Partners**
 - **City of Milwaukee DPW / MKE Parks**
 - **Redevelopment Authority**
 - **Century City Tri-Angle Neighborhood Association**
 - **Reflo Sustainable Water Solutions**
 - **Clean Wisconsin**

- **Funding Sources**
 - **MMSD Green Infrastructure Partnership Program**
 - **WDNR Urban Nonpoint Source and Stormwater Management Construction Grant**
 - **EPA Great Lakes Restoration Initiative**
 - **Burke Foundation**
 - **Greater Milwaukee Foundation**
 - **MKE Parks and RACM Budget Contributions**