

William G. Robison AIA | PRINCIPAL | ARCHITECT

Bill leads multi-faceted project teams and develops thoughtful design solutions for a variety of projects including medical and design for aging facilities, housing facilities and cultural buildings. He works to engage his clients in all aspects of a project, from programming and design to construction administration and project delivery. EADP is recognized in the industry as utilizing state of the art technology for project design, documentation and management. Bill serves as our advisor for this portion of the business.

Education

University of Wisconsin-Milwaukee School of
Architecture and Urban Planning
Master of Architecture, 1990
Bachelor of Science, 1988

Registrations

State of Registration: Wisconsin

Activities/Affiliations

American Institute of Architects, Member

Awards/Recognition

American Institute of Architects
*Winner, Henry Adams Medal, for Excellence in
Architecture, 1990*

Academic Experience

University of Wisconsin-Milwaukee School of
Architecture and Urban Planning
Adjunct Assistant Professor, 1995 - 1998

Select Project Experience

LIBRARIES

Appleton Public Library, Appleton, WI

Short term 75,000 sf program and a long range
111,000 sf building program to meet the needs of
the community for the next 20 years

Bay County New Central Library, Bay City, MI

New 70,300 sf central library

Bay View Branch Library, Milwaukee, WI

New 16,500 sf neighborhood branch of the
Milwaukee Public Library System

Beloit Public Library, Beloit, WI

Relocation of library to the former JC Penney
store at the Beloit Mall. The space is over 54,000
sf, with all public functions on a single first floor,
and staff spaces in the building's upper level.

Brown County Library System, WI

Weyers-Hilliard Branch Library, Green Bay
New 23,000 sf branch library facility

Kress Family Branch of the Brown County Library,
DePere

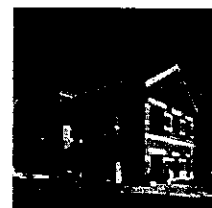
New 21,000 sf branch library located within his-
toric DePere redevelopment

Cedarburg Public Library, Cedarburg, WI

Programming and cost analysis for
new/expanded public library

Evansville-Vanderburgh Central Library, Evansville, IN

New 150,000 sf main library



Select Project Experience | WILLIAM ROBISON

LIBRARIES continued

Frank L. Weyenberg Library of Mequon-Thiensville, Mequon, WI

18,000 sf contextual addition and complete renovation of original 12,000 sf Georgian Colonial building

Iowa City Public Library, Iowa City, IA

A renovation of the current 47,000 sf library and a 33,500 sf expansion, which integrates retail and office space fronting the city's downtown pedestrian mall

Musser Public Library, Muscatine, IA

Planning study and schematic design of multiple sites for 60,000 sf library.

Urbandale Public Library, Urbandale, IA

New 50,000 sf library facility

Weld District, Greeley, CO

Centennial Park Branch Library, Greeley, CO

Renovation and updating of 28,000 sf library in central Greeley

The Farr Library, Greeley, CO

New 38,000 sf library facility

West Bend Community Memorial Library, West Bend, WI

- Interior remodeling of existing library including circulation department
- Facility relocation study

Winfield Public Library, Winfield, IL

Study of a new replacement 34,000 sf library facility on existing site

Winterset Public Library, Winterset, IA

New 13,000 sf library facility

DESIGN FOR AGING

AngelsGrace Hospice, Oconomowoc, WI

New 15-bed 25,000 sf inpatient facility providing rooms with private access to patios, and garden spaces in an interactive natural environment

Featured in *Innovations in Hospice Architecture*, 2005.

Sharon S. Richardson Hospice Home & Palliative Care Retreat, Sheboygan, WI

One story, 29,000 sf facility to provide in-patient hospice care for 16 private and 2 pediatric/family hospice rooms

HEALTHCARE

Froedtert East (formerly known as Milwaukee County Medical Complex), Milwaukee, WI

290,000 sf ambulatory care facility and parking structure for 725 cars

Holy Family Medical Center, Des Plaines, IL

Lobby/coffee kiosks design as well as renderings for design of new 58,000 sf clinic and medical office building which connects to existing hospital.

St. Catherine's Hospital, Kenosha, WI

Emergency Room Department expansion and renovation

Waukesha Memorial Hospital, Waukesha, WI

Southwest Addition; OB/GYN addition and remodeling

HOUSING

Astor Court at East Pointe, Milwaukee, WI

Luxury condominium units set in an historic urban environment

Bailey's Harbor Yacht Club, Bailey's Harbor, WI

Hotel, condominium and retail complex

Dye House Condominiums, Milwaukee, WI

Conversion of Milwaukee warehouse space into 12 unit, 20,000 sf condos

Pabst City Block 2, Milwaukee, WI

Study for a mixed-use development in historic brewery district of Milwaukee which includes a 1,880 car parking structure with 48,000 sf of retail space and 58 condominium units

**Represents experience while with a former firm.*

Select Project Experience | WILLIAM ROBISON

CORPORATE / RETAIL

Alterra Coffee, Milwaukee, WI

Design of new coffee houses and wholesale roastery facilities - multiple locations

Alterra Café/Interpretive Center, Milwaukee, WI

Renovation of historic building that previously housed the city's water flushing station, serves as new café, located in a park setting along the lakeshore

Alterra Past Building Restoration, Milwaukee, WI

Study of 36,000 sf facility to include a cafe and roasting facility. Incorporates sustainable design strategies.

Bank One, Milwaukee, WI

Proposed lobby redesign and public space upgrade, ADA/Life Safety Code analysis of entire building

Bayou, Milwaukee, WI

Design of new 5,700 sf upscale urban restaurant with outdoor deck overlooking Milwaukee River

Breadsmith Stores, nationwide

Architecture, interior and graphic design for European-style bakeries, national environment guide and corporate standards

Continental Properties, Menomonee Falls, WI

New 12,500 sf corporate headquarters facility; the building's unique design incorporates both brick and glass in its facade

Dye House, Milwaukee, WI

Exterior and interior renovation of five-story 160,000 sf historic factory/distribution warehouse, including retail lobby

Engberg Anderson Office Relocation, Milwaukee, WI

Relocation of architecture firm into 18,500 sf of an 85 year-old former manufacturing and warehouse building. The project is LEED®-CI (Leadership in Energy and Environmental Design for Commercial Interiors) registered with certification anticipated

Forest County Potawatomi Executive Building, Crandon, WI

40,000 sf executive government center, community, auditorium and tribal court

Halling & Cayo, S.C., Milwaukee, WI

10,000 sf law firm relocation/expansion

IKON Office Solutions, Milwaukee, WI

Space program for consolidation of three facilities; includes short-term and long-term plans for a 60,000 sf facility

Live Bar & Nightclub, Milwaukee, WI

2,000 sf contemporary tavern and performance space

Nunn Bush Shoe Company, multiple locations

Brass Boot Shoe Stores/Morgan Hayes Shoe Stores in Chicago and Dallas

Open Roads, Milwaukee, WI

3,000 sf advertising agency in the Dye House

Potawatomi Business Development Group, Milwaukee, WI

2,800 sf upscale offices for new financial and development arm of Forest County Potawatomi Tribe

Segway of Milwaukee, Milwaukee, WI

New 900 sf retail segway dealership and accompanying 1,000 sf training and tour center in the Dye House

Village Fair, Wauwatosa, WI

Renovation/facade replacement for retail center

ECCLESIASTIC

Advent Lutheran Church, Cedarburg, WI

Interior Renovation to accommodate new organ

Congregation Beth Israel, Glendale, WI

Exterior and interior renovation of existing synagogue worship and multi-purpose spaces

Congregation Emanu-el B'ne Jeshurun, River Hills, WI

Masterplan and design for a 10-acre second campus with teaching areas and a library

Select Project Experience | WILLIAM ROBISON

ECCLESIASTIC continued

First Unitarian Society of Milwaukee, Milwaukee, WI

Master plan and renovation/restoration to provide accessibility and increase educational areas, office expansions

Humphrey Scottish Rite Masonic Center, Milwaukee, WI

Historic interior renovation project for this landmark building; scope included bringing the building into compliance with ADA standards, remodeling the 400-seat auditorium, dining facility and administrative areas

MUNICIPAL

735 North Water Street Building, Milwaukee, WI

Streetway/Riverwalk

Fox Lake Correctional Institution, Fox Lake, WI*

New Administration, Armory and Gatehouse Facility

South Milwaukee Yacht Club, Milwaukee, WI

Site master plan and overall renovation and redesign of existing harbor facility

Waukesha Metro Transit System, Waukesha, WI

• **Transit Operations Facility Addition**

Includes addition to a bus storage, maintenance and office facility

• **Downtown Transfer Terminal**

Transit terminal including an indoor lobby, waiting area, restrooms, ticket sales/vending area, a satellite transit office and future retail space, along with multiple public art installations

*Represents experience while with a former firm.