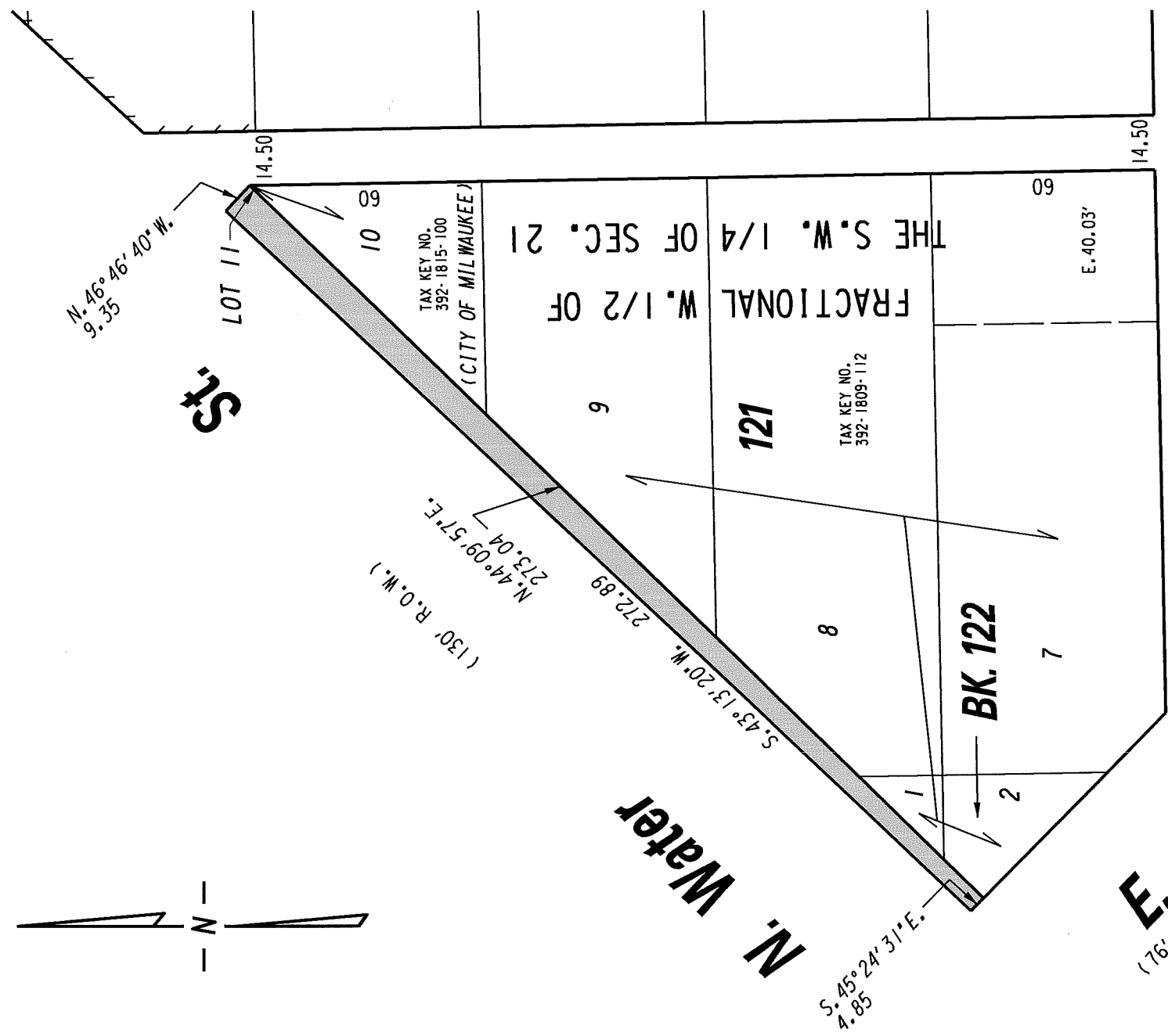


360

S.W. 1/4 SEC. 21, T.7N., R.22E.

(E. Pleasant St.)




 PORTION OF PUBLIC STREET PROPOSED TO BE VACATED

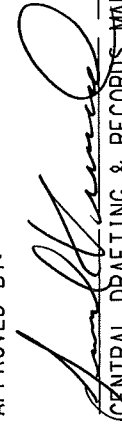
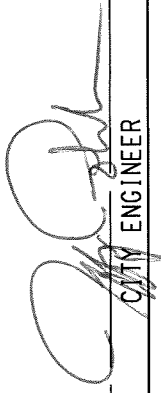
Lyon (80' R.O.W.) **St.**

EXHIBIT "A"
FILE NO. 131497

INFRASTRUCTURE SERVICES DIVISION

MILWAUKEE, WISCONSIN
 ASSIGNED TO: W.E. FUCHS
 DRAWN BY: W.E.F.
 PROJECT/GRANT NO.: WK52337342
 APPROVED BY:

CH'K'D. BY: W.E. FUCHS
 DATE: MAY 27, 2014
 SCALE: 1" = 40'


 CENTRAL DRAFTING & RECORDS-MANAGER

 CITY ENGINEER