



208 S. LaSalle Street, Ste. 1818
Chicago, IL 60604

PROJECT: 070501
DATE: DECEMBER 20, 2007

1218 HIGHLAND RENOVATION

Milwaukee, WI

T 414.220.9640
F 414.220.9595

P.O. BOX 510663
MILWAUKEE, WI 53203

CONTINUUM
ARCHITECTS + PLANNERS, S.C.



208 S. LaSalle Street, Ste. 1818
Chicago, IL 60604

PROJECT: 070501
DATE: DECEMBER 20, 2007

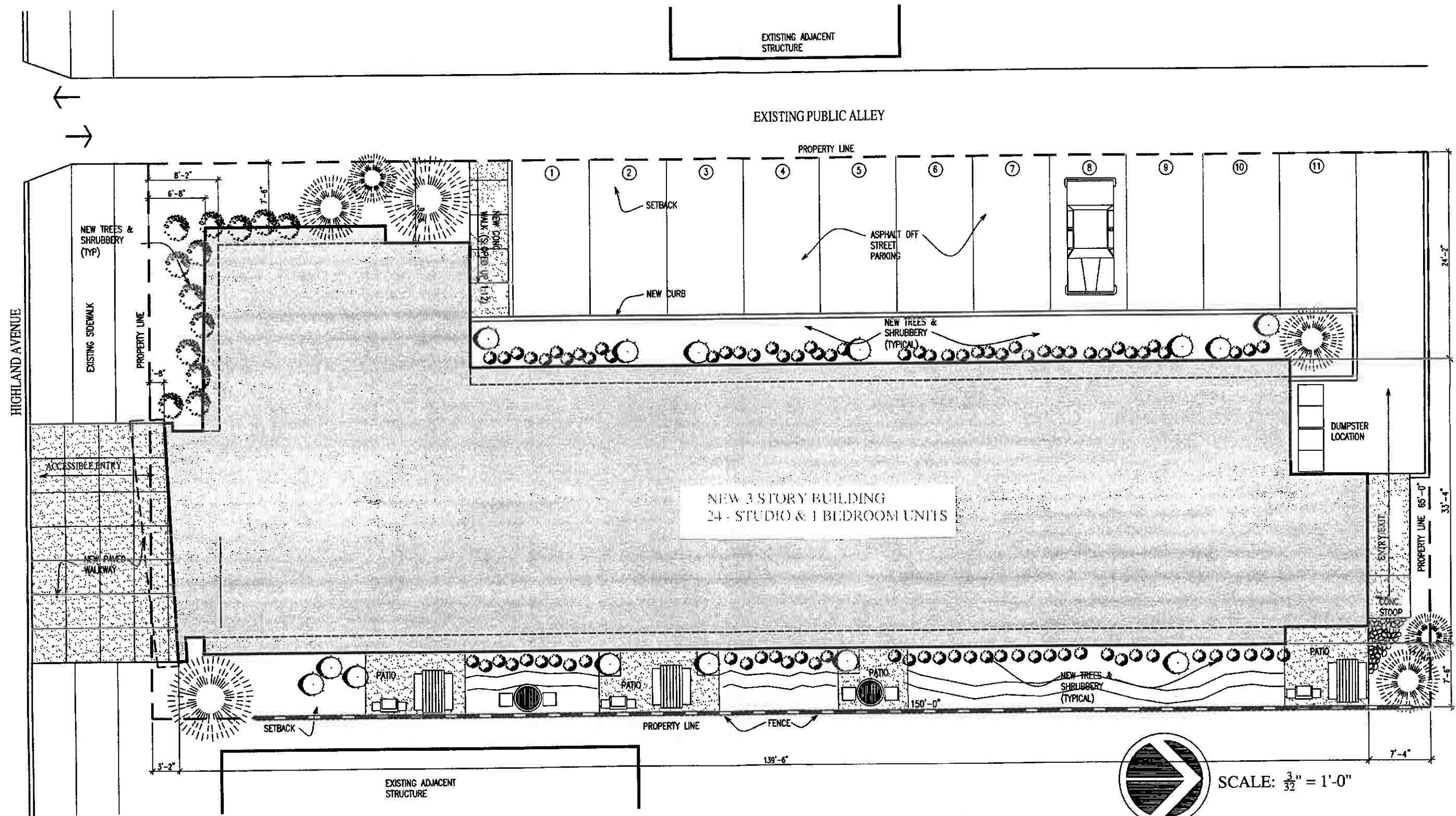
1218 HIGHLAND RENOVATION

Milwaukee, WI

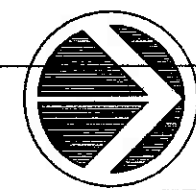
T 414.220.9640
F 414.220.9595

P.O. BOX 510663
MILWAUKEE, WI 53203

CONTINUUM
ARCHITECTS + PLANNERS, S.C.



NEW 3 STORY BUILDING
24 - STUDIO & 1 BEDROOM UNITS



SCALE: $\frac{3}{32}'' = 1'-0''$



208 S. LaSalle Street, Ste. 1818
Chicago, IL 60604

PROJECT: 070501
DATE: DECEMBER 20, 2007

1218 HIGHLAND RENOVATION

Milwaukee, WI

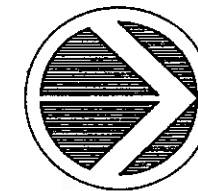
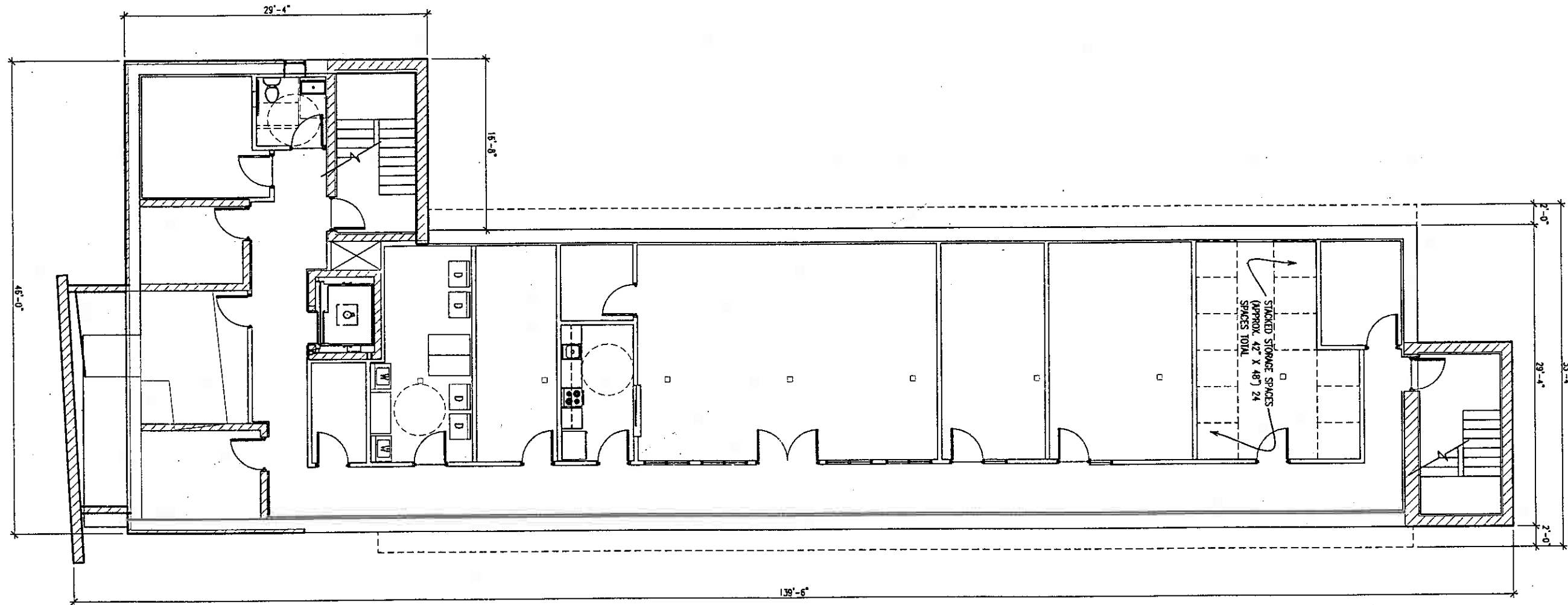
T 414.220.9640
F 414.220.9595

P.O. BOX 510663
MILWAUKEE, WI 53203

CONTINUUM

ARCHITECTS + PLANNERS, S.C.

© COPYRIGHT 2005, CONTINUUM ARCHITECTS + PLANNERS, S.C.



BASEMENT
SCALE: $\frac{3}{32}'' = 1'-0''$



208 S. LaSalle Street, Ste. 1818
Chicago, IL 60604

PROJECT: 070501
DATE: DECEMBER 20, 2007

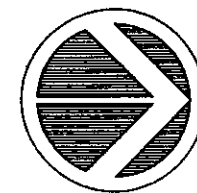
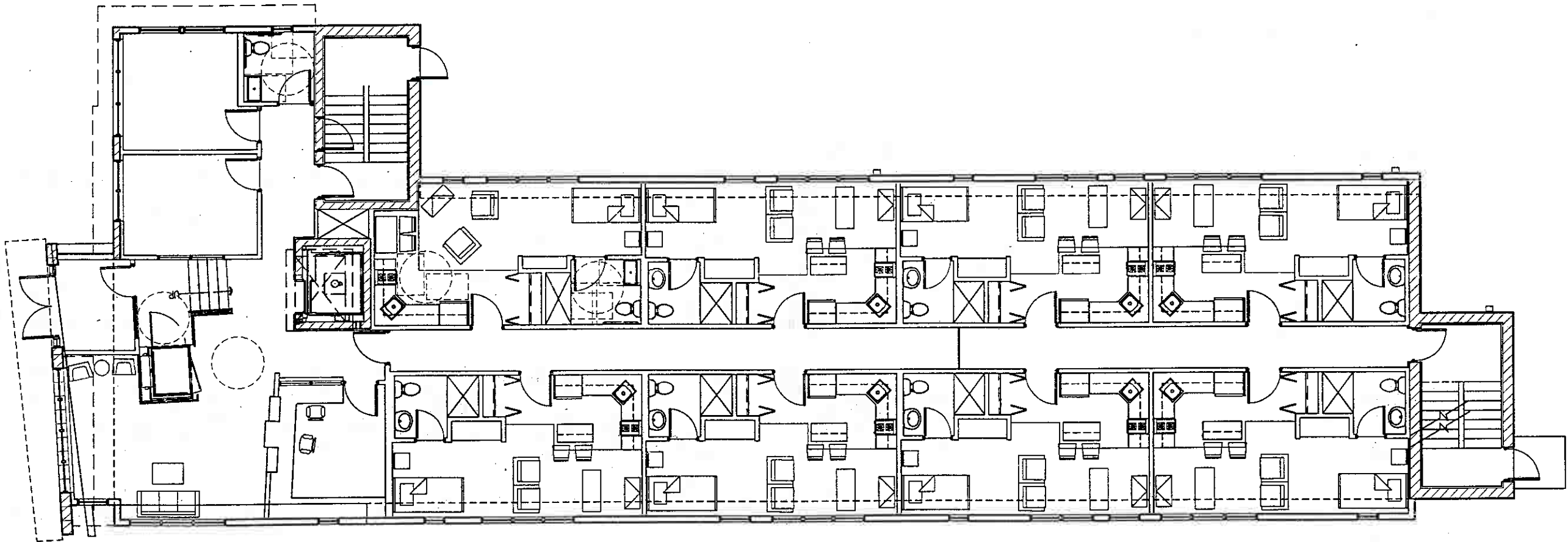
1218 HIGHLAND RENOVATION

Milwaukee, WI

T 414.220.9640
F 414.220.9595

P.O. BOX 510663
MILWAUKEE, WI 53203

CONTINUUM
ARCHITECTS + PLANNERS, S.C.



1st FLOOR
SCALE: $\frac{3}{32}'' = 1'-0''$



208 S. LaSalle Street, Ste. 1818
Chicago, IL 60604

PROJECT: 070501
DATE: DECEMBER 20, 2007

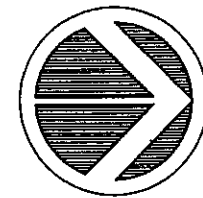
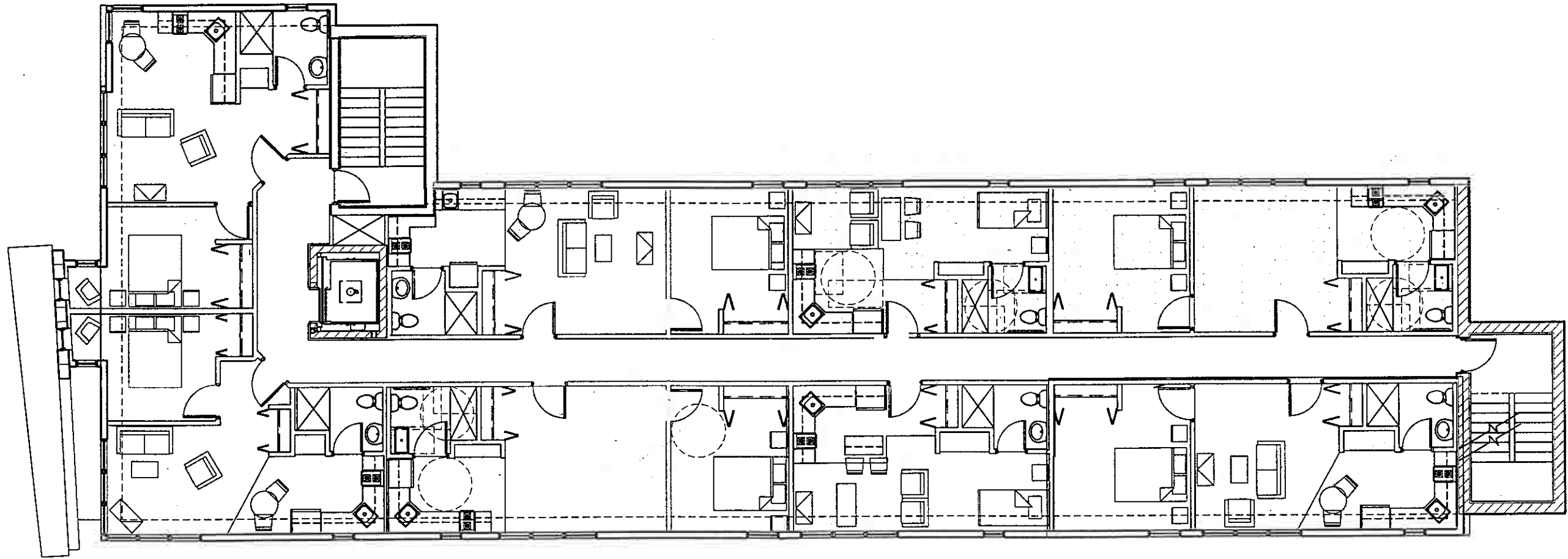
1218 HIGHLAND RENOVATION

Milwaukee, WI

T 414.220.9640
F 414.220.9595

P.O. BOX 510663
MILWAUKEE, WI 53203

CONTINUUM
ARCHITECTS + PLANNERS, S.C.



2nd FLOOR
SCALE: $\frac{3}{32}'' = 1'-0''$



208 S. LaSalle Street, Ste. 1818
Chicago, IL 60604

PROJECT: 070501
DATE: DECEMBER 20, 2007

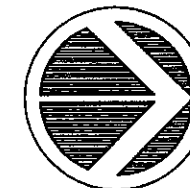
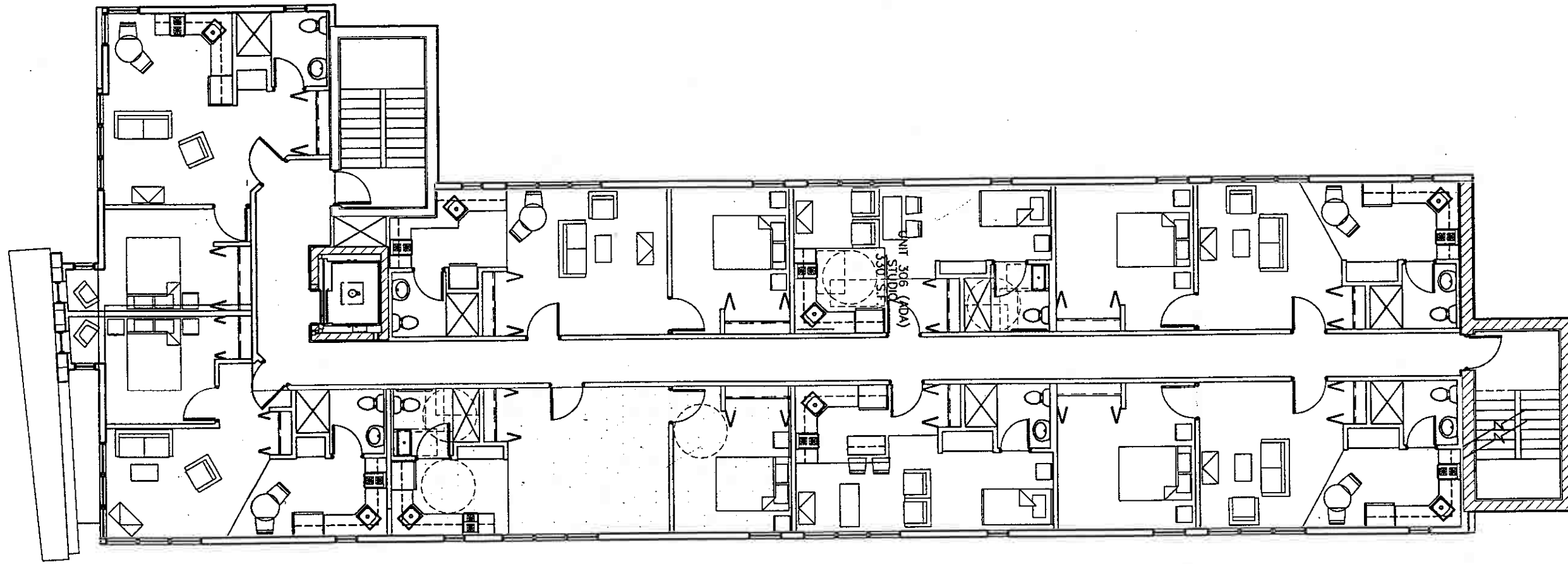
1218 HIGHLAND RENOVATION

Milwaukee, WI

T 414.220.9640
F 414.220.9595

P.O. BOX 510663
MILWAUKEE, WI 53203

CONTINUUM
ARCHITECTS + PLANNERS, S.C.



3rd FLOOR
SCALE: $\frac{3}{32}'' = 1'-0''$



208 S. LaSalle Street, Ste. 1818
Chicago, IL 60604

PROJECT: 070501
DATE: DECEMBER 20, 2007

1218 HIGHLAND RENOVATION

Milwaukee, WI

T 414.220.9640
F 414.220.9595

P.O. BOX 510663
MILWAUKEE, WI 53203

CONTINUUM
ARCHITECTS + PLANNERS, S.C.