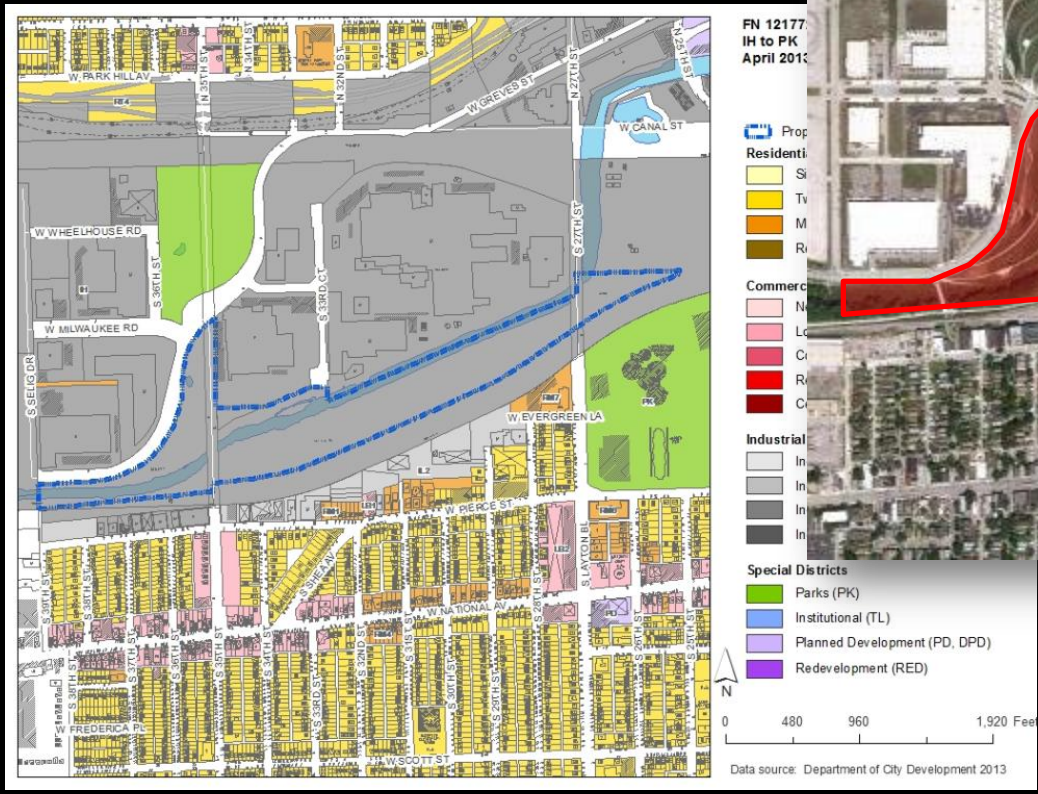


File No. 121772. An ordinance relating to the change in zoning from Industrial Heavy to Parks, for a park, on land located on the south side of West Canal Street, generally between South Selig Drive and South 27th Street, in the **8th Aldermanic District**. This zoning change was requested by the Redevelopment Authority of the City of Milwaukee, and would permit development of a park at the former Menomonee Valley Airline Yards site.





Facing east from W. Canal St.



Facing west from S. Layton Blvd.



Facing west from S. 35th St.

Rendering from Journal Sentinel, August 2012





Historic neighborhood connection restored
as the Valley Passage



