

File No. 141510. An ordinance relating to the change in zoning from Multi-Family Residential to Local Business for reuse of a building located at 6914 West Appleton Avenue, on the northeast side of West Appleton Avenue, north of West Keefe Avenue Parkway, in the 10th Aldermanic District.



FN 141510
 Change in zoning from RM2 to LB1
 March 2015

Legend
 Zoning Change Boundry

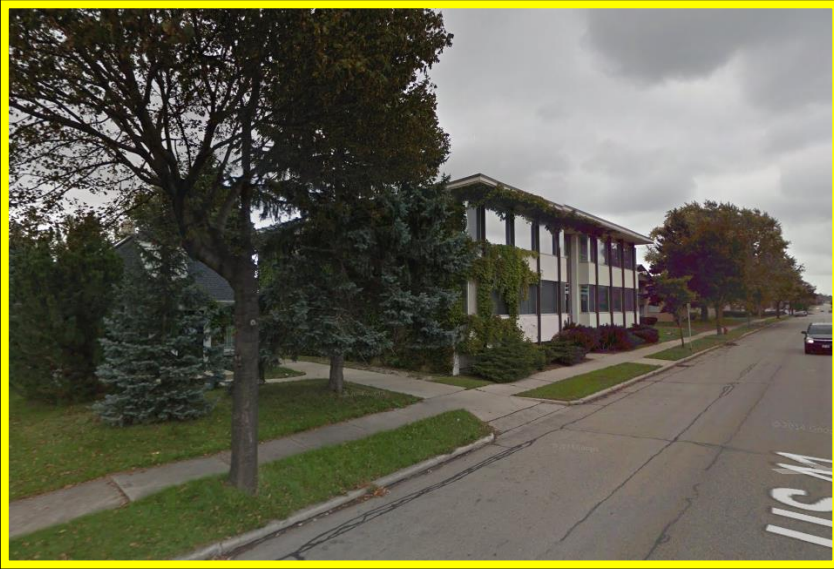
Zoning
MAPCODE

- Commercial - Commercial Service
- Commercial - Neighborhood Shopping
- Commercial - Local Business
- Commercial - Regional Business
- Downtown
- Industrial - Office
- Industrial - Light
- Industrial - Medium Density
- Industrial - Heavy
- Residential - Single-Family Detached
- Residential - Medium Density
- Residential - Single-Family Attached
- Special - Park
- Special - Institutional
- Special - Planned
- Special - Redevelopment

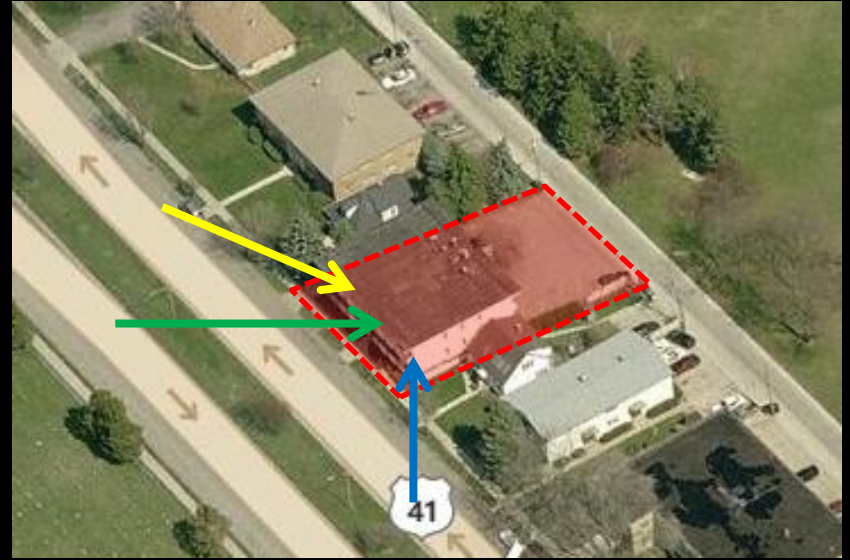
0 25 50 Feet
 Source: Dept. of City Planning



File No. 141510. Site Context Photos.



View looking southeast from West Appleton Avenue



View looking east from West Appleton Avenue



View looking north from West Appleton Avenue