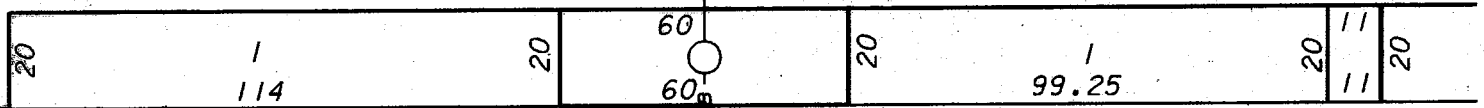


W. MEINECKE

AVE.

15" COMB.



326-1595-133-0

METCALFE
(CITY OF MILWAUKEE)

(LOT 15 AND PART OF LOTS 1-14, BLK. 8,
PART OF LOT 1 & ALL OF LOTS 2-15, BLK. 7 OF
PRUSSIAN HEIGHTS, PART OF LOT 1 & ALL
OF LOTS 26-40, BLK. 2 OF LEWIS' SUBD. AND
VAC. STREET & ALLEY)

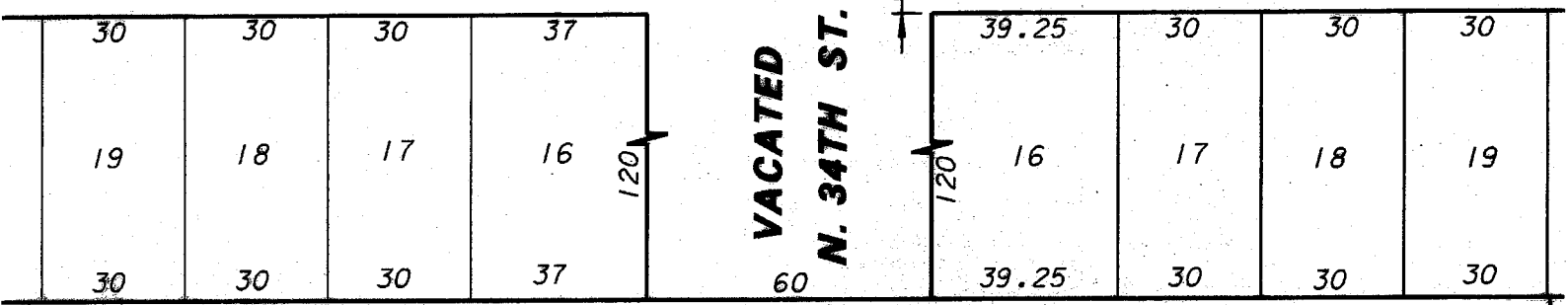
PLAYFIELD

S.E.R.-2420

326-1608-100-3

120

99.25



W. NORTH

AVE.



ENVIRONMENTAL ENGINEERING SECTION
INFRASTRUCTURE SERVICES DIVISION
DEPARTMENT OF PUBLIC WORKS
MILWAUKEE, WISCONSIN

PLAN OF SEWER EASEMENT RELEASE

AREA IN S.E. 1/4 SEC. 15, T. 25, R. 21 E.

N. 33RD ST. TO N. 34TH ST. FROM

W. NORTH AVE TO W. MEINECKE AVE.

SCALE 1" = 40'

ATLAS CASE NO. 228

EASE NO. S.E.R.-2420

DRAWN BY D. COOK

CHKD BY [Signature]

W.O. NO.

APPROVED

[Signature]

DATE 12/6/99

APPROVED

[Signature]

FILE NO. 151-4-39