

APPROVED
By Tim Askin - Milwaukee HPC at 2:58 pm, Sep 15, 2021

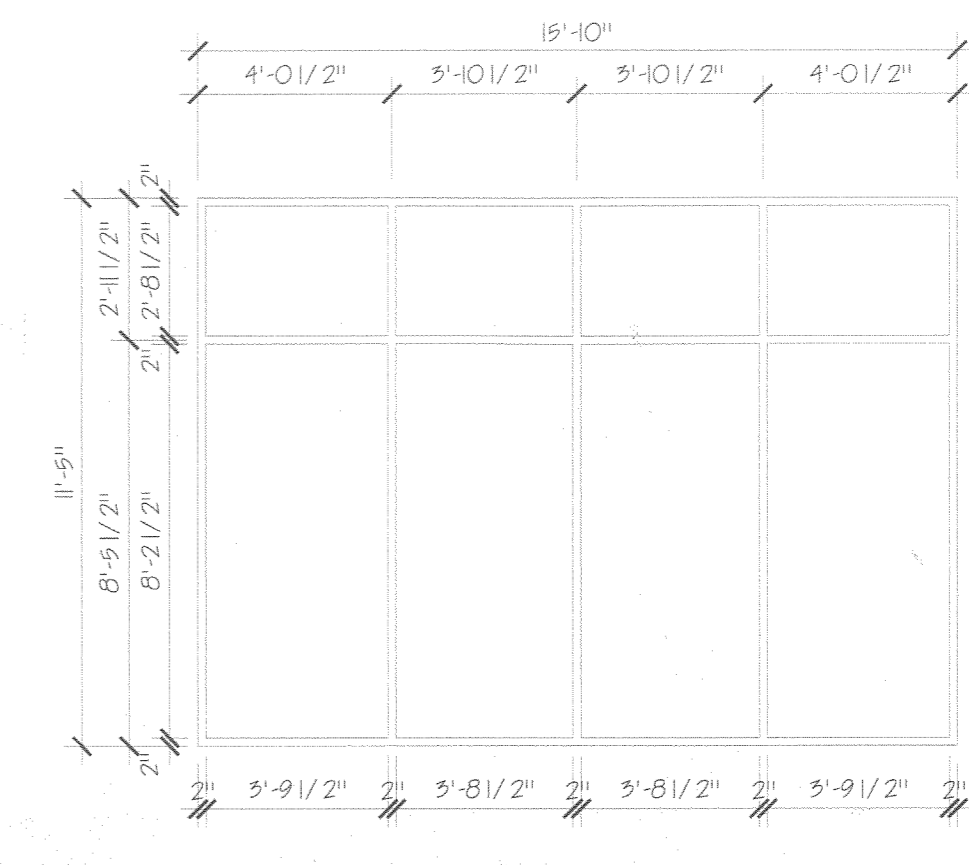


1 REMOVE EXISTING DOORS
REMOVE EXISTING TRANSOM PANELS ABOVE BOTH DOORS
EXISTING NORTH ELEVATION
SCALE: NTS

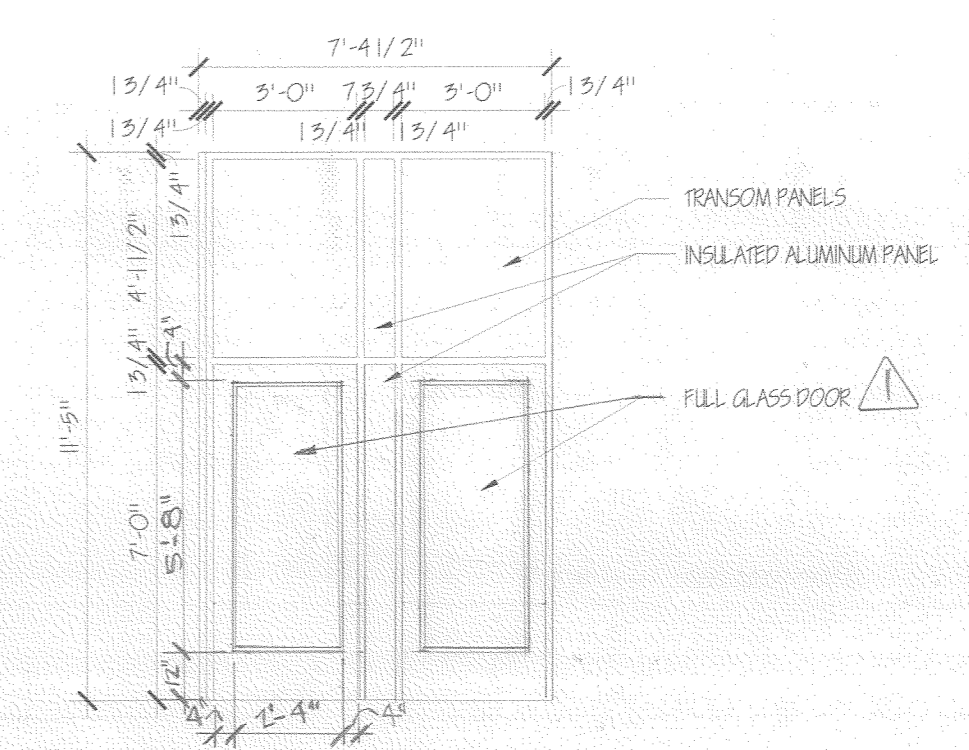
- REMOVE EXISTING LIGHT FIXTURES AND EXPOSED CONDUIT AND CAP PER CODE
- EXISTING WINDOWS AND WINDOW FRAMING TO BE REMOVED
- EXISTING GLASS BLOCK AND FRAMING TO BE REMOVED
- REMOVE EXISTING FRAMING AND BLOCKING AT WEST OPENING.
- BREAK UP AND REMOVE EXISTING CONCRETE SILL - REMOVE TO FOUNDATION WALL BELOW
- NEW ALUMINUM FRAME STOREFRONT WITH THERMO PANE TO MATCH EXISTING STORES TO THE EAST
- NEW INSULATED STEEL DOOR AND FRAME AND HARDWARE WITH TRANSOM PANEL COLOR TO MATCH EXISTING DOORS TO THE EAST
- NEW ALUMINUM FRAMED STOREFRONT DOOR TRANSOM AND FRAME AND HARDWARE TO MATCH EXISTING STORE TO THE EAST
- NEW BRICK INFILL TO MATCH EXISTING - CONCRETE SILL PLUS 3 COURSES OF BRICK



2 REVISED NORTH ELEVATION
SCALE: NTS



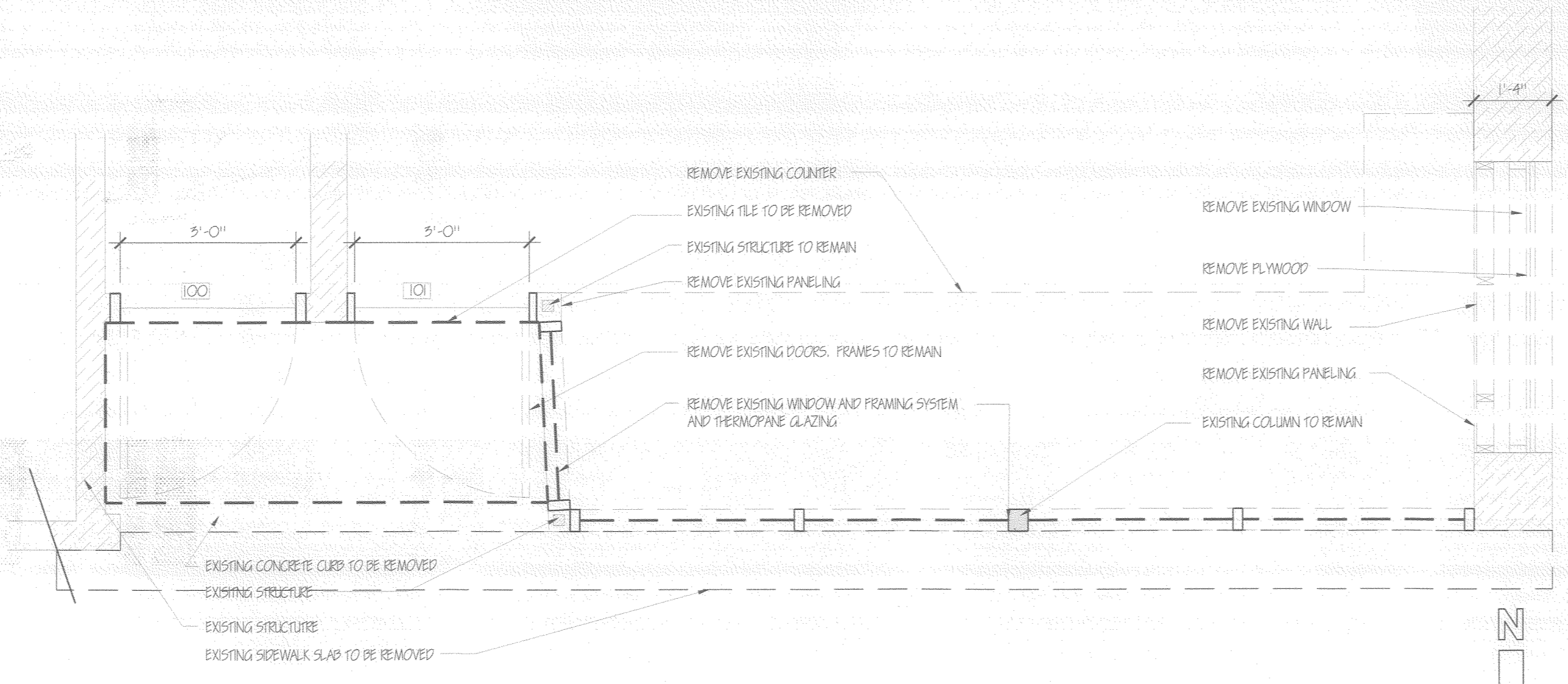
13 ELEVATION NORTH WINDOW
SCALE: 1/4" = 1'-0"



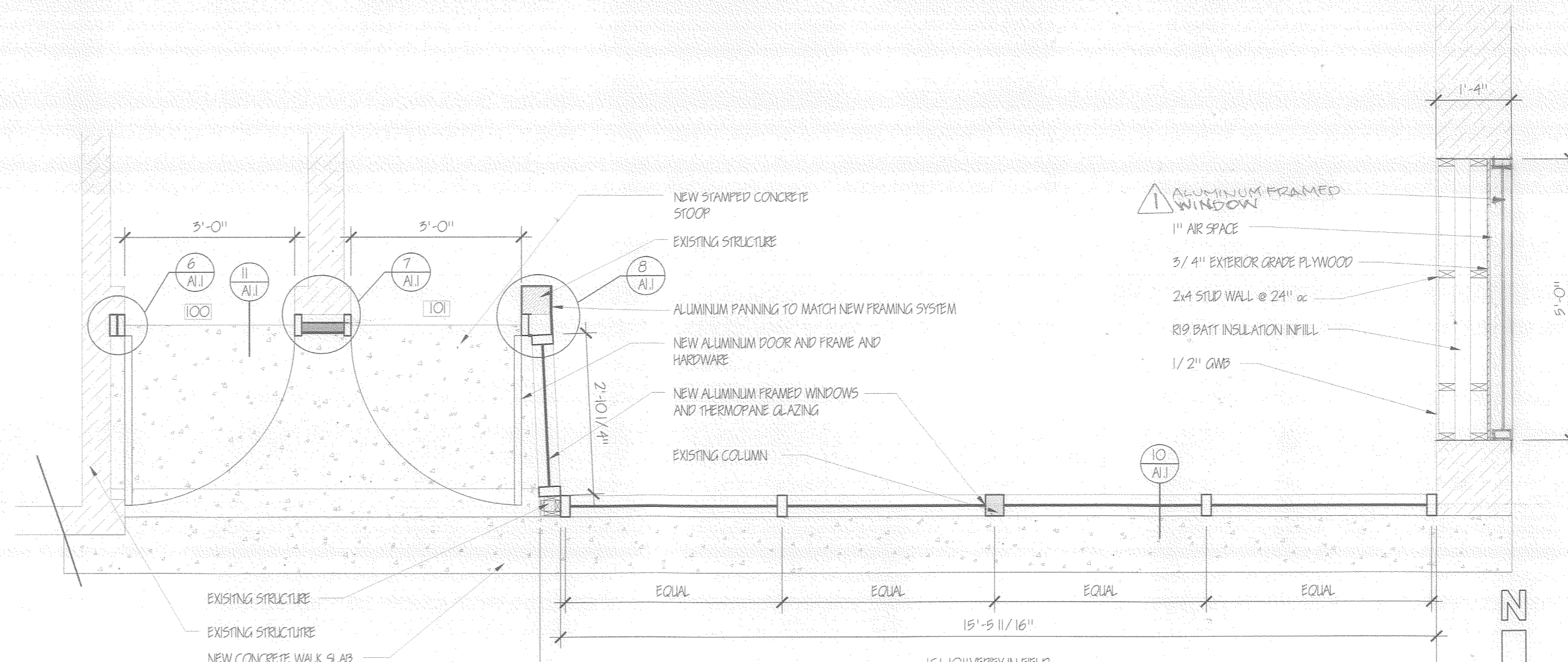
14 ELEVATION DOORS
SCALE: 1/4" = 1'-0"



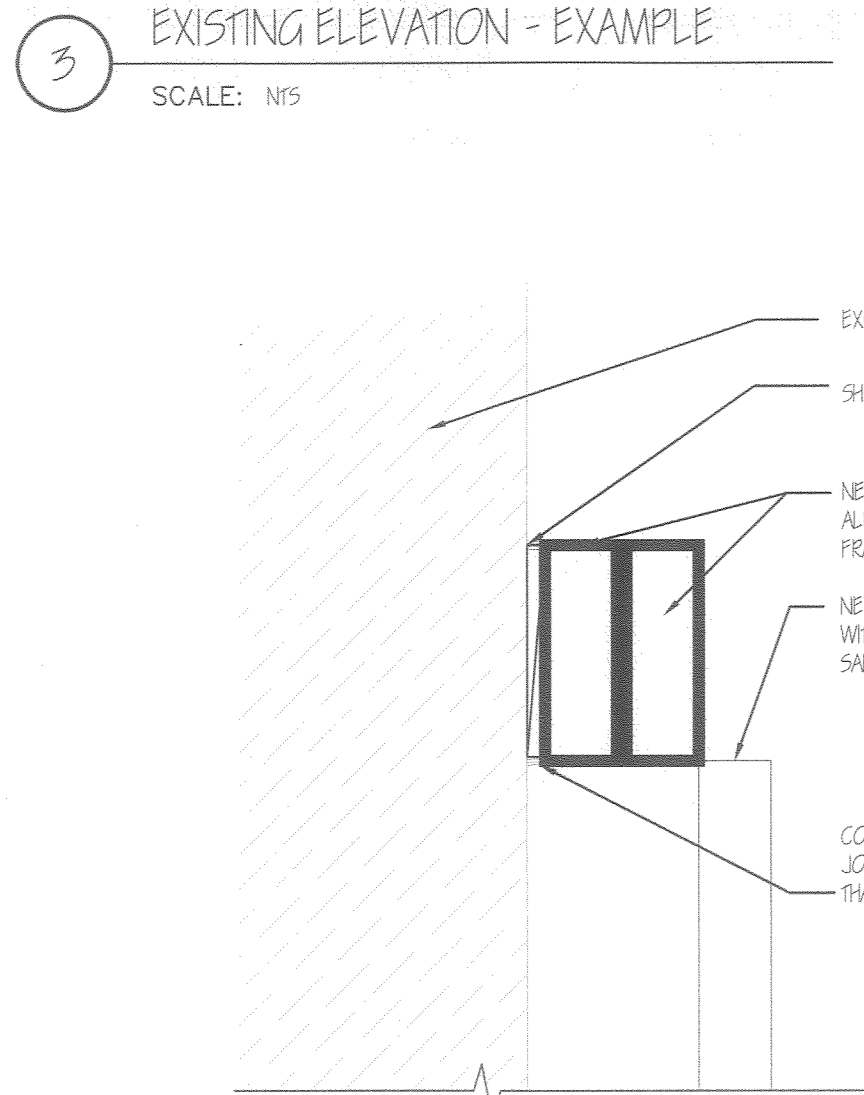
3 EXAMPLE OF EXISTING ALUMINUM FRAMING; STOREFRONT; DOORS; FRAMES AND TANSOM AND GLAZING. THIS IS TO BE MATCHED AT 815-817 ADDRESS
EXISTING ELEVATION - EXAMPLE
SCALE: NTS



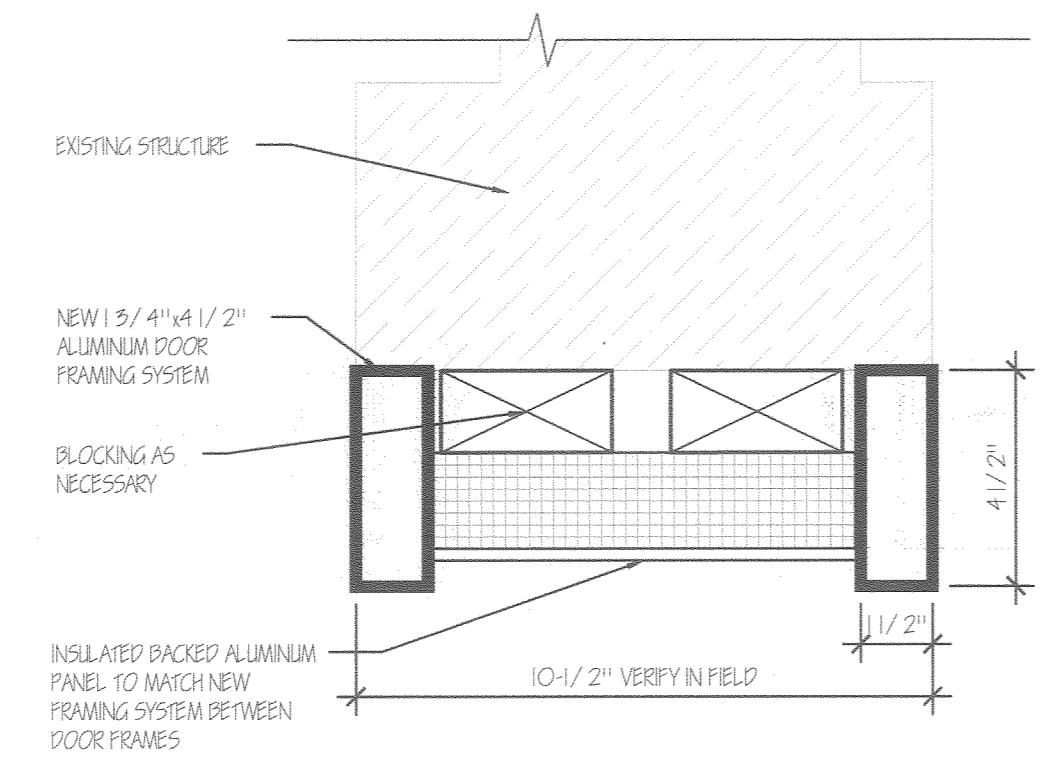
4 EXISTING FLOOR PLAN
SCALE: 1/2" = 1'-0"



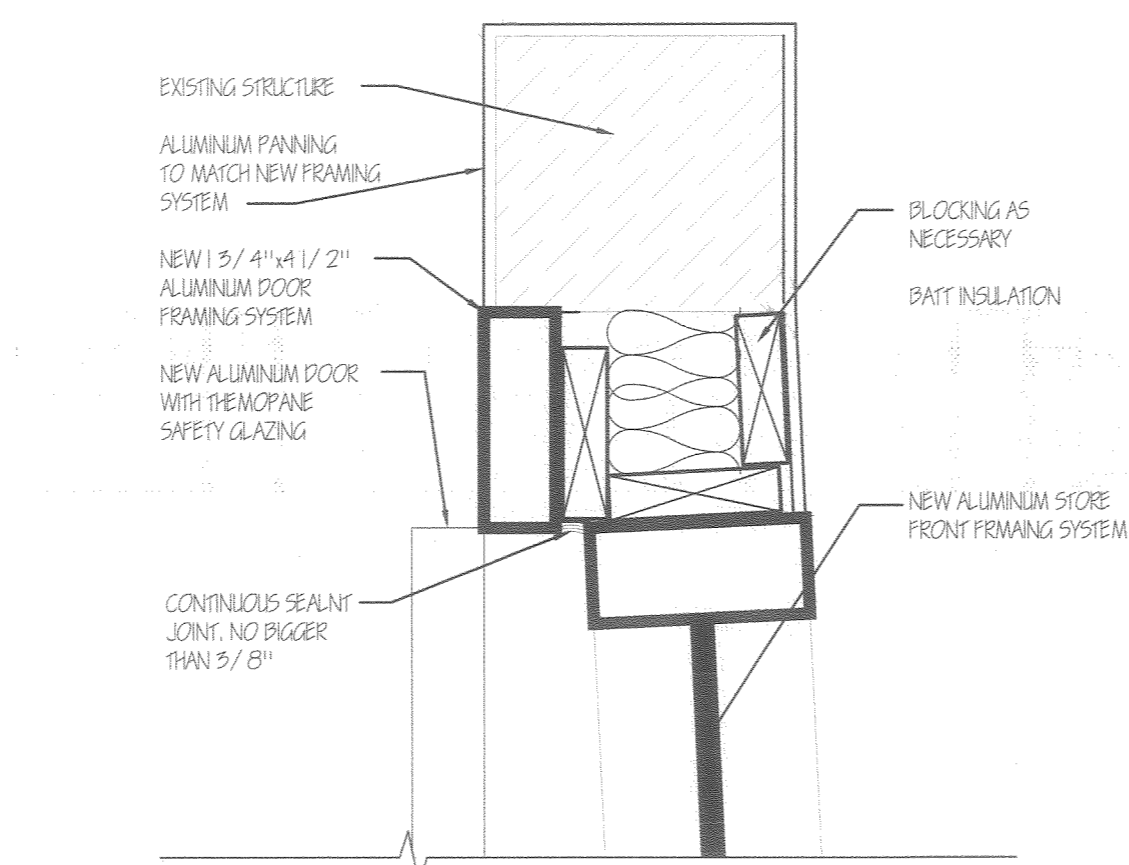
5 PARTIAL REVISED FLOOR PLAN
SCALE: 1/2" = 1'-0"



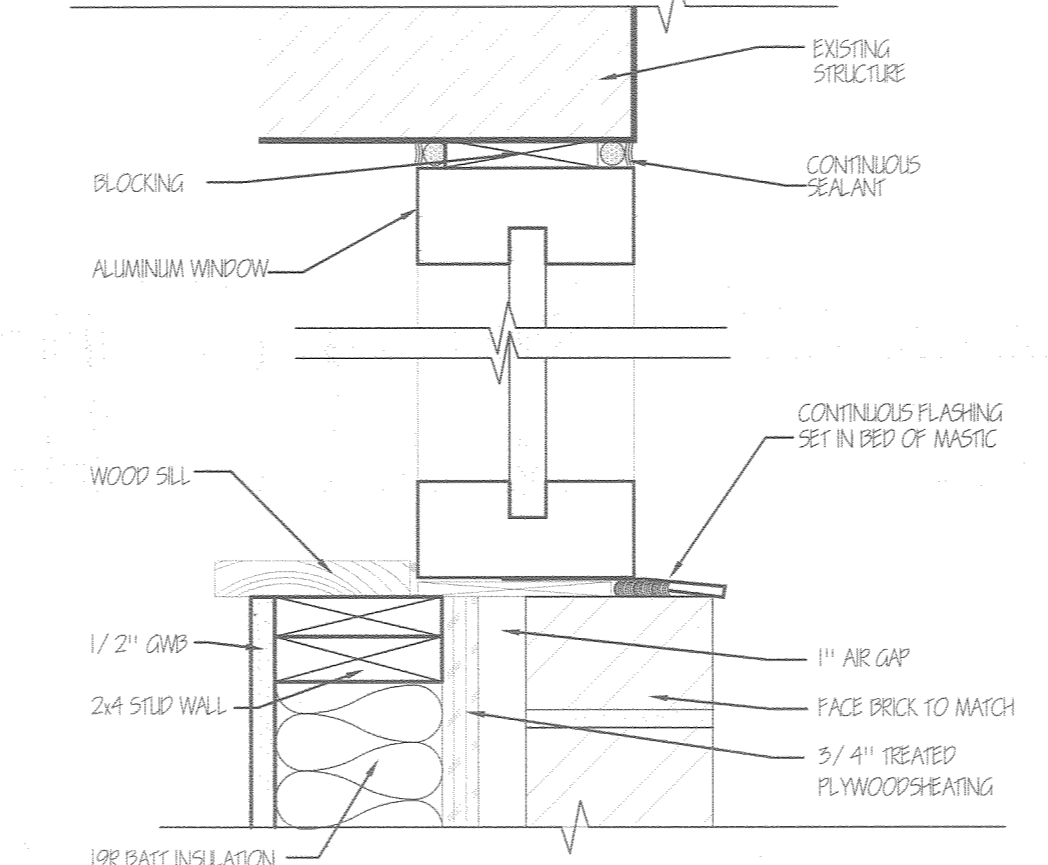
6 DOOR JAMB
SCALE: 3/4" = 1'-0"



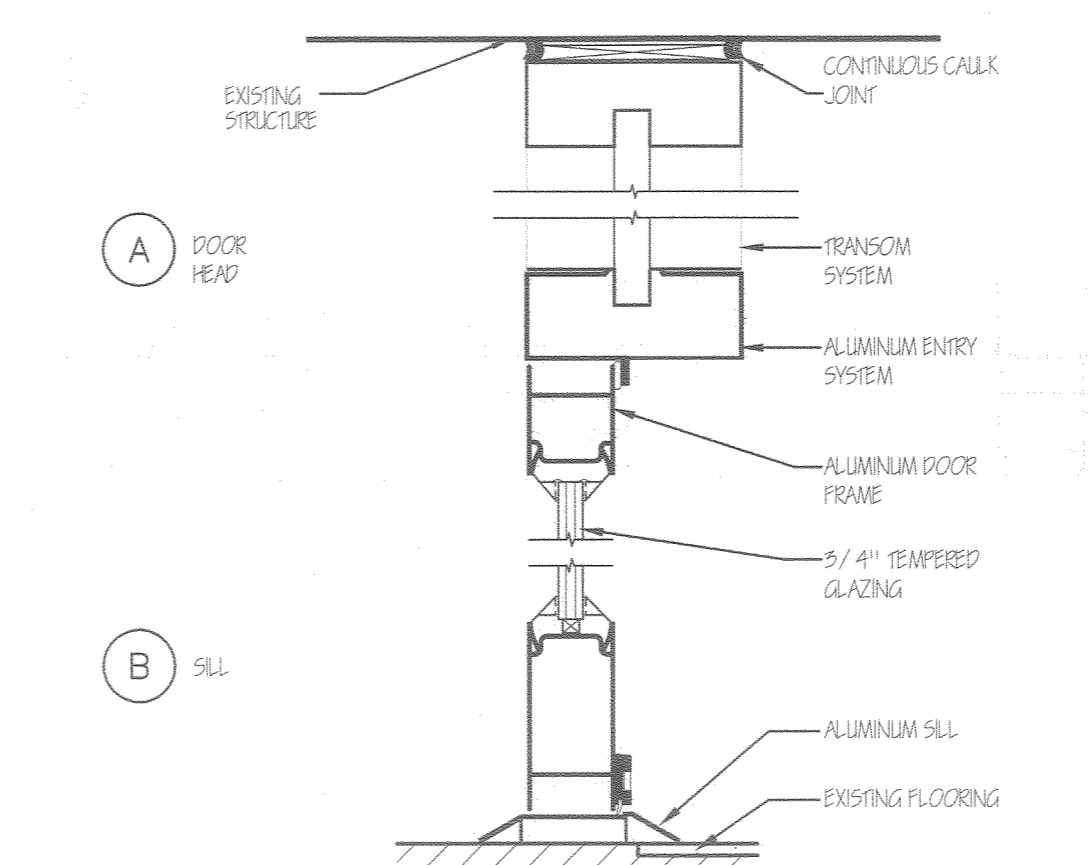
7 JAMB/ INFILL PANEL
SCALE: 3/4" = 1'-0"



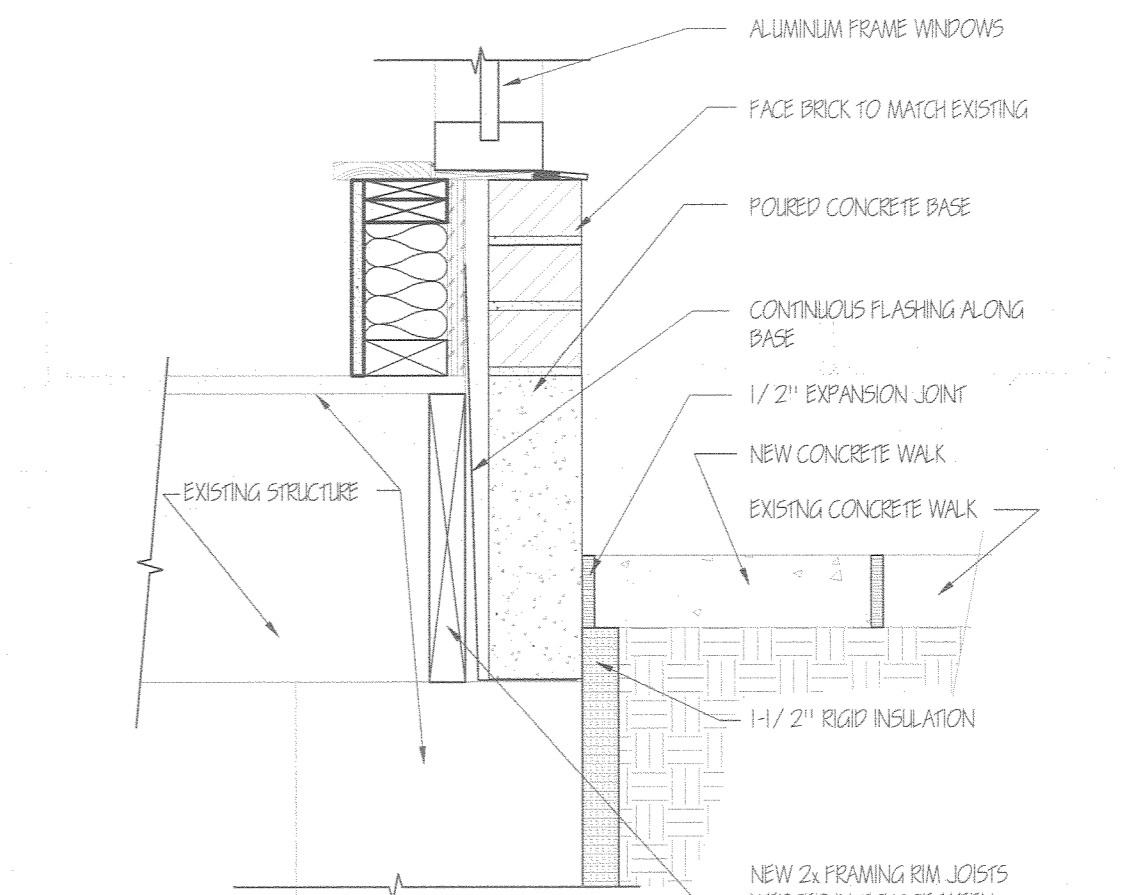
8 DOOR/ WINDOW JAMB
SCALE: 3/4" = 1'-0"



10 SILL DETAIL
SCALE: 3/4" = 1'-0"



11 DOOR SECTION
SCALE: 3/4" = 1'-0"



12 BASE SILL DETAIL
SCALE: 1/2" = 1'-0"

FACADE ALTERATIONS
HECTOR SALINAS
815-817 WEST HISTORIC MITCHELL
MILWAUKEE, WI 53202

ARCHITECT:
SchultzWerk
Architecture, Inc.
2515 NORTH 66TH STREET
WAUWATOSA, WI 53213
414.778.1187
swerk@juno.com

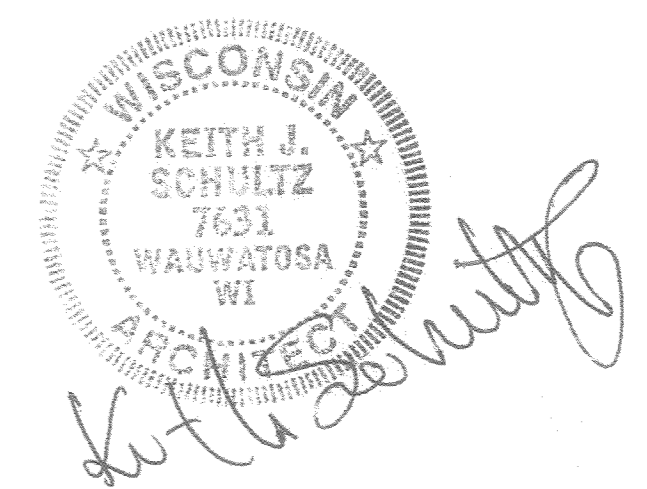


ARCHITECT:
KEITH SCHULTZ, AIA

REVISIONS
9/7/2021

PROJECT NO. 10026.00
DATE 12/22/10
DRAWN BY KJS
CHECKED BY KJS

SHEET CONTENTS
FLOOR PLAN



SHEET
A1.1
1 OF 1