

Northwest Side Comprehensive Area Plan

Held by Zoning and Neighborhood Development Committee for the Department of City Development to review the following items:

- 1. Creation of growth boundaries to encourage in-fill development, rather than development of existing green space.*
- 2. Existing rail lines and integrating them into a high-speed system to access downtown, creating development hubs around rail stations and creation of a larger transportation plan.*
- 3. The future of Timmerman Field.*
- 4. The future of Brynwood country club.*
- 5. The future of the vacant Milwaukee County transit hub at 76th and Mill Rd.*
- 6. Expanded use of town squares.*

Northwest Side Comprehensive Area Plan

1. *Creation of growth boundaries to encourage in-fill development, rather than development of existing green space.*

Northwest Side Comprehensive Area Plan

1. *Creation of growth boundaries to encourage in-fill development, rather than development of existing green space.*
2. *Existing rail lines and integrating them into a high-speed system to access downtown, creating development hubs around rail stations and creation of a larger transportation plan.*

Northwest Side Comprehensive Area Plan

1. *Creation of growth boundaries to encourage in-fill development, rather than development of existing green space.*
2. *Existing rail lines and integrating them into a high-speed system to access downtown, creating development hubs around rail stations and creation of a larger transportation plan.*
3. *The future of Timmerman Field.*



Northwest Side Comprehensive Area Plan

1. *Creation of growth boundaries to encourage in-fill development, rather than development of existing green space.*
2. *Existing rail lines and integrating them into a high-speed system to access downtown, creating development hubs around rail stations and creation of a larger transportation plan.*
3. *The future of Timmerman Field.*
4. *The future of Brynwood country club.*

Northwest Side Comprehensive Area Plan

1. *Creation of growth boundaries to encourage in-fill development, rather than development of existing green space.*
2. *Existing rail lines and integrating them into a high-speed system to access downtown, creating development hubs around rail stations and creation of a larger transportation plan.*
3. *The future of Timmerman Field.*
4. *The future of Brynwood country club.*
5. *The future of the vacant Milwaukee County transit hub at 76th and Mill Rd.*

Northwest Side Comprehensive Area Plan

1. *Creation of growth boundaries to encourage in-fill development, rather than development of existing green space.*
2. *Existing rail lines and integrating them into a high-speed system to access downtown, creating development hubs around rail stations and creation of a larger transportation plan.*
3. *The future of Timmerman Field.*
4. *The future of Brynwood country club.*
5. *The future of the vacant Milwaukee County transit hub at 76th and Mill Rd.*
6. *Expanded use of town squares.*

Northwest Side Comprehensive Area Plan

1. *Creation of growth boundaries to encourage in-fill development, rather than development of existing green space.*
2. *Existing rail lines and integrating them into a high-speed system to access downtown, creating development hubs around rail stations and creation of a larger transportation plan.*
3. *The future of Timmerman Field.*
4. *The future of Brynwood country club.*
5. *The future of the vacant Milwaukee County transit hub at 76th and Mill Rd.*
6. *Expanded use of town squares.*

Northwest Side Comprehensive Area Plan

Other suggested additions or changes

- 1. Language regarding rezoning of commercial areas to promote alternate uses*
- 2. Signage guidelines*
- 3. Area north of Job Corp Project – Ch 4: District 10*
- 4. Gateway entrance – Ch 4 – District 7:*
- 5. Street connections – text deletion*
- 6. Landlord Compacts*

Northwest Side Comprehensive Area Plan

Other suggested additions or changes

1. *Language regarding rezoning of commercial areas to promote alternate uses*

Northwest Side Comprehensive Area Plan

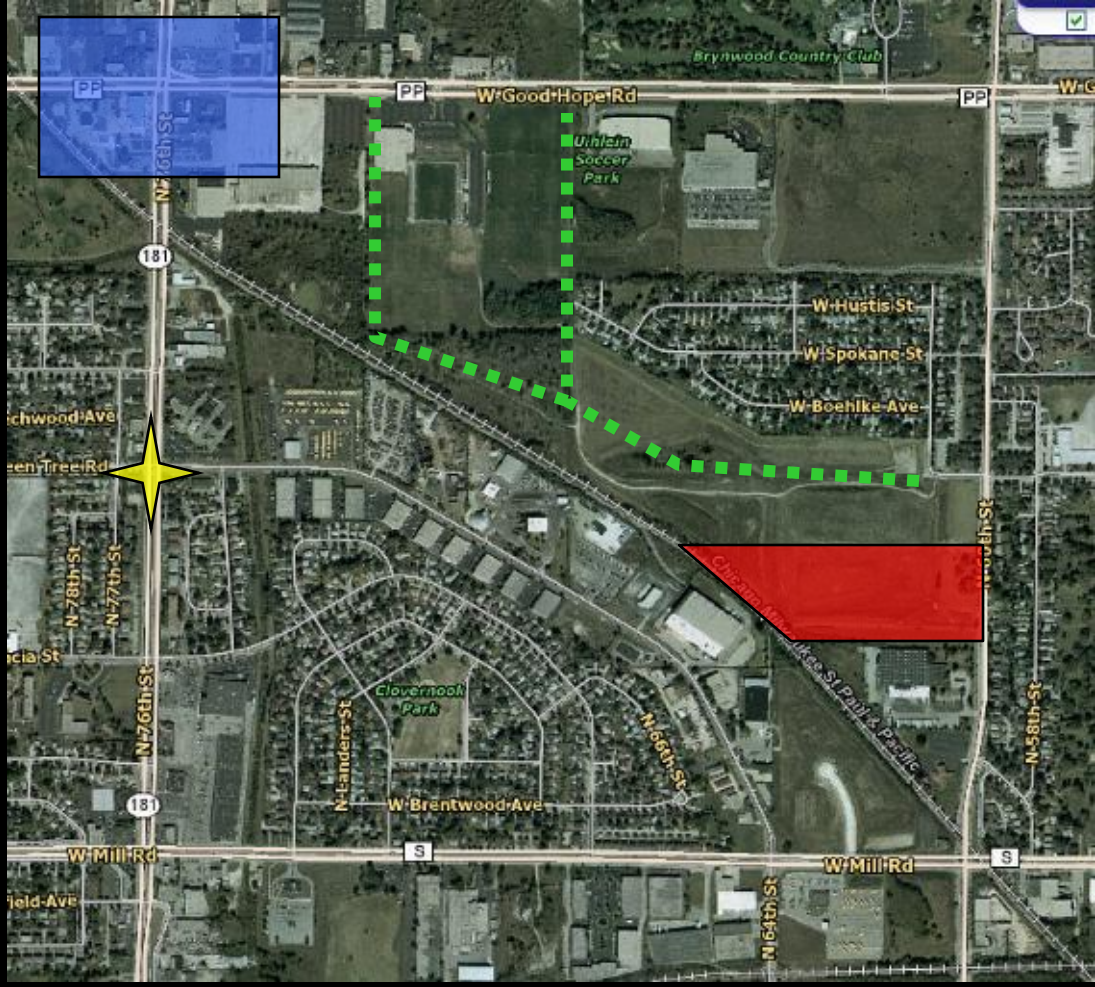
Other suggested additions or changes

- 1. Language regarding rezoning of commercial areas to promote alternate uses*
- 2. Signage guidelines*

Northwest Side Comprehensive Area Plan

Other suggested additions or changes

- 1. Language regarding rezoning of commercial areas to promote alternate uses
- 2. Signage guidelines
- 3. Area north of Job Corp Project – Ch 4: District 10
- 4. Gateway entrance – Ch 4 – District 7:



Northwest Side Comprehensive Area Plan

Other suggested additions or changes

- 1. Language regarding rezoning of commercial areas to promote alternate uses*
- 2. Signage guidelines*
- 3. Area north of Job Corp Project – Ch 4: District 10*
- 4. Gateway entrance – Ch 4 – District 7:*
- 5. Street connections – text deletion*

Northwest Side Comprehensive Area Plan

Other suggested additions or changes

- 1. Language regarding rezoning of commercial areas to promote alternate uses*
- 2. Signage guidelines*
- 3. Area north of Job Corp Project – Ch 4: District 10*
- 4. Gateway entrance – Ch 4 – District 7:*
- 5. Street connections – text deletion*
- 6. Landlord Compacts*

Northwest Side Comprehensive Area Plan

Other suggested additions or changes

- 1. Language regarding rezoning of commercial areas to promote alternate uses*
- 2. Signage guidelines*
- 3. Area north of Job Corp Project – Ch 4: District 10*
- 4. Gateway entrance – Ch 4 – District 7:*
- 5. Street connections – text deletion*
- 6. Landlord Compacts*

Northwest Side Comprehensive Area Plan

Questions and Comments