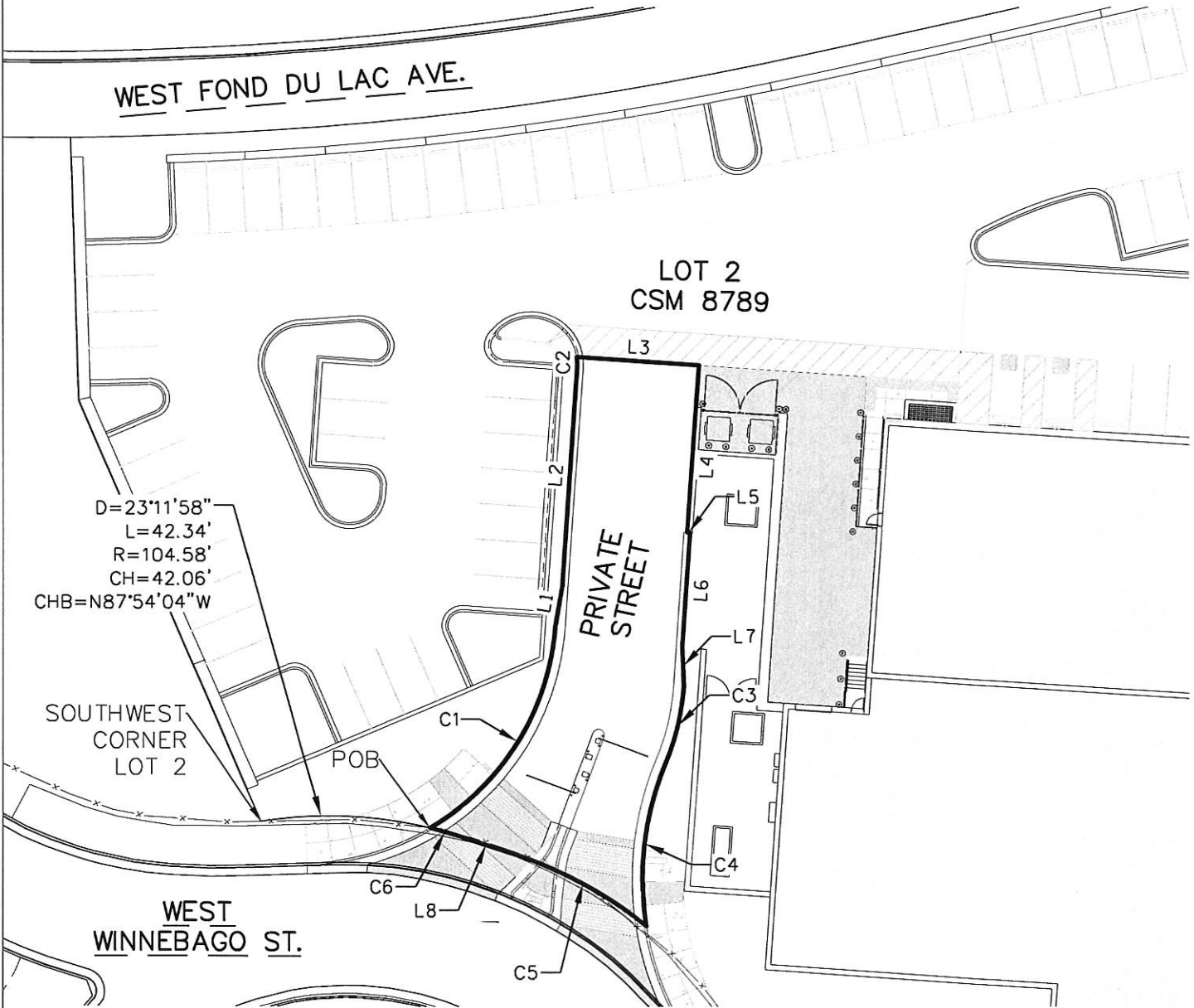




### EASEMENT EXHIBIT B



D=23'11'58"  
 L=42.34'  
 R=104.58'  
 CH=42.06'  
 CHB=N87°54'04"W

SOUTHWEST  
 CORNER  
 LOT 2

POB

WEST  
 WINNEBAGO ST.

PRIVATE  
 STREET

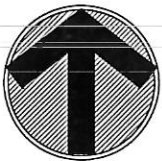
LOT 2  
 CSM 8789

CURVE TABLE

CURVE #	DELTA	LENGTH	RADIUS	CH	CHB
C1	D=55°29'19"	L=62.38'	R=64.42'	CH=59.98'	CHB=N31°39'19"E
C2	D=12°04'53"	L=2.42'	R=11.50'	CH=2.42'	CHB=N2°07'47"W
C3	D=18°47'03"	L=20.19'	R=61.58'	CH=20.10'	CHB=S13°18'11"W
C4	D=31°59'37"	L=41.55'	R=74.42'	CH=41.02'	CHB=S6°41'54"W
C5	D=20°58'51"	L=38.30'	R=104.58'	CH=38.08'	CHB=N61°33'49"W
C6	D=4°14'51"	L=7.75'	R=104.58'	CH=7.75'	CHB=N74°10'40"W

LINE TABLE

LINE #	LENGTH	DIRECTION
L1	10.06'	N10° 05' 37"E
L2	55.37'	N03° 54' 39"E
L3	30.56'	S86° 05' 20"E
L4	42.25'	S03° 54' 39"W
L5	0.70'	S86° 05' 21"E
L6	28.61'	S03° 54' 39"W
L7	10.06'	S02° 16' 18"E
L8	14.00'	N72° 03' 14"W



0 10 20 40  
 SCALE IN FEET 1"=40'



Department of Public Works  
Infrastructure Services Division

Ghassan Korban, P.E.  
Commissioner of Public Works

Jeffrey S. Polenske, P.E.  
City Engineer

Timothy J. Thur, P.E.  
Infrastructure Administration Manager

June 7, 2017

To the Honorable, the Common Council

Subject: Private Street Designation Request of North Deer Drive

Dear Honorable Members:


To support the construction of a new building for the Milwaukee Bucks training facility, the owner has requested a private street be designated. Designating this roadway as a private street will allow addresses to be assigned, support commercial use and facilitate emergency response to this property.

It is recommended that the attached resolution be adopted to create a private street.

Sincerely,



Jeffrey Polenske, P.E.  
City Engineer



Ghassan Korban, P.E.  
Commissioner of Public Works

<sup>YM</sup>YM/PM/clm  
<sup>JT</sup>Attachment

c: Alderwoman Milele A. Coggs