

GENEVA EDWARDS
2030 North 24 Street
Milwaukee, WI 53205

CITY OF MILWAUKEE

2010 MAY 21 AM 11:35

RONALD D. LEONHARDI
CITY CLERK

May 19, 2010

Milwaukee City Clerk
200 East Wells Street, Room 205
Milwaukee, Wisconsin 53202

OFFICE OF
CITY ATTORNEY
2010 MAY 24 PM 2:52
CITY OF MILWAUKEE
RECEIVED

Dear Mr. Langley:

Geneva Edwards Wish To Appeal Your Decision

C.I. File No.: 10-S-47

I have received your response to my claim in the amount of \$92.55, to damages suffered to my vehicle when it struck a pothole on February 9, 2010 by/near North end North 6th Street on the side where the State Office Building driveway not South end which you had written on my claim letter; and the pothole was not in the driveway it was in the street.

You mentioned that your investigation reveals that the Infrastructure Services Division reviewed their records and the records of the DPW and found prior to February 9, 2010 the City had no notice of this hazard in the roadway. For over a year there was a missing sewer grate where the pothole was so that is a good possibility why your records of the DPW Call Center showed no prior records of a pothole because cars knew to steer clear including me because it was a deep opening at the sewer. On the day that my incident happened, there was a new sewer cap on the sewer. The pothole was right in front of the sewer on the North end North 6th Street side as you cross the street lights on Kilbourn. Also, if you check the weather for that day February 9, 2010 we had a snow storm and the pothole wasn't visible and because of this problem not being corrected I feel the city should be liable to damage of my tire that was only a year old.

CITY OF MILWAUKEE
CITY OF MILWAUKEE MY CLAIM FORM

2010 FEB 15 PM 3:09
(Damage To My Vehicle)

OFFICE OF
CITY ATTORNEY

Claimant's Name: Geneva Edwards
Street Address: 2030 N 24 Street
City/State/Zip Code: Milwaukee, WI 53205
Telephone Number: Day- 414-344-3577 Evening- 414-344-3577 (Voice Mail)
Email Address: edwardsg@matc.edu
Claimant's Vehicle: 1993 TOYOTA COROLLA BLUE 4DR

CITY OF MILWAUKEE
2010 FEB 15 AM 7:33
RONALD D. LEONARDI
CITY CLERK

Date, Time and place of Incident: February 09, 2010- 1:20pm – Across the street from Kilbourn on six Street.

Location at Which Incident Occurred: Across the street from Kilbourn in the far right lane in front of the State Office Building 819 N 6th Street heading south the pot hole was more towards the end not far from the State building driveway on six street.

Describe in Detail How Incident Occurred: I was on my way to work at Milwaukee Area Technical College 02/09/10. I'm traveling down six street which I do every day Monday thru Thursday because I park my car in the parking structure at 605 W Wells St. I was in the far right lane which I'm always in so I can pull into the Firestone parking structure, but before I got to the structure around 1:20pm my car hit a deep pot hole on six street in front of the State Office Building towards Kilbourn and it destroyed my right front tire and I had to buy a tire from Firestone costing \$ 92.55. I had recently bought a set of 4 new tires about a year ago. So, I'm asking for money damages of \$ 92.55 for the one tire.

Reported to City Hall Call Center and City Clerk: I spoke to Scott Feb. 09, 2010 at the City Call Center at 2:05pm and Cheryl in the City Clerk Dept. February 09, 2010 at 2:10pm. I called again after 2pm today 02/10/10 to inform the call center that the snow from the storm and plowing has covered the hole.

Work Sheet and Bill Attached: Yes

Statement of relief sought: \$ 92.55

Pictures Are attached: 13 copies of the deep pothole

Paid Bill Attached: Yes

Signature of Claimant:

Geneva Edwards

Date:

02-10-10

Customer Invoice
103627
02/09/2010

FIRESTONE COMPLETE AUTO CARE
WELLS ST
605 W WELLS ST
MILWAUKEE, WI. 53203

Service Advisor:
03 AARON
414.278.7404

EDWARDS, GENEVA
2030 N 24TH ST
MILWAUKEE, WI 53205-1005
414.297.8180

1993 TOYOTA COROLLA [BLUE]
4-1587 1.6L DOHC
Lic #: 865MTV WI Vin #: 1NXAE04EOPZ103476
In: 02/09/10 1:30PM Mileage: 49,260
Out: 02/09/10 4:05PM

Store # 020168

RETAIL SALE

Description	Rev Hist /Article #	ID	Qty	Unit Price	Extended Price	Job Total
COURTESY CHECK		03				
COURTESY CHECK	7046930	77TS	1	N/C	N/C	
FIRESTONE TIRE PACKAGE RF	1,2	02				87.17
148206 FR380 BL 185/65R14 86S 55,000 MILE LIMITED WARRANTY	148206	77TN	1	63.99	63.99	
DOT# E26C38B4509						
NEW TIRE WHEEL BALANCE PARTS	7018708	77TN	1	3.00	3.00	
NEW TIRE WHEEL BALANCE LABOR	7018716	77TS	1	8.00	8.00	
RUBBER VALVE STEM	7015040	77TN	1	2.00	2.00	
7097782 ROAD HAZARD PROTECTION	7097782	77TN	1	7.68	7.68	
TIRE DISPOSAL FEE (1)	7075078	77TN	1	2.50	2.50	
TIRE INSTALLATION	7015016	77TS	1	N/C	N/C	

ORDER NOTES

THERE WAS A CUT ON THE SIDEWALL, WHICH CAUSED THE RF TIRE TO GO FLAT.

Technician(s):

77 PHENG LOR

Payment History:

American Express 1002 92.55 584305
Total Tendered 92.55

Summary:

Parts 76.67
Labor 10.50
Shop Supplies 0.48
Sub-Total 87.65
Tax (5.60%) 4.90
Total \$92.55

I have received the above goods and/or services. If this is a credit card purchase, I agree to pay and comply with my cardholder agreement with the issuer.

Revision History:	Rev Amt	Init
1) 02/09/2010 02:24PM	66.16 EDWARDS, GENEVA 414.297.8180	
2) 02/09/2010 02:27PM	0.00 EDWARDS, GENEVA 414.297.8180	

Customer Signature

Initial here to indicate you have received the Tire Maintenance Warranty Book.

All parts are new unless otherwise specified.

Declined Work:

ALIGNMENT SERVICE
PREMIUM ALIGNMENT SERVICE
EVER-WEAR TRANSMISSION FLUID FLUSH
EVER-WEAR RADIATOR SERVICE / NEW ANTIFREEZE
: FLUSH BRAKE SYSTEM :

I acknowledge notice and oral approval of an increase in the original estimated price.

Signature or Initials

Motor Vehicle repair practices are regulated by chapter ATCP 132, Wis. Adm. Code, administered by the bureau of consumer protection, Wisconsin Dept. Agriculture, Trade and Consumer Protection, PO Box 8911, Madison, Wisconsin 53708-8911

"MOTOR VEHICLE REPAIR PRACTICES ARE REGULATED BY CHAPTER ATCP 132, WIS. ADM. CODE, ADMINISTERED BY THE BUREAU OF CONSUMER PROTECTION, WISCONSIN DEPT. OF AGRICULTURE, TRADE AND CONSUMER PROTECTION, P. O. BOX 8911, MADISON, WISCONSIN 53708-8911"

www.FirestoneCompleteAutoCare.com

LIMITED NATIONWIDE SERVICE WARRANTY

Your Complete Satisfaction is Important to us:

Thank you for your purchase. At Firestone Complete Auto Care, our goal is complete customer satisfaction. If you have any questions or concerns regarding the service you received or our nationwide limited warranty, **please contact the Manager** of the store listed on the front of this document. You may also contact Bridgestone Retail Operations, LLC Customer Retention toll free at 1-800-367-3872 or visit our website at www.firestonecompleteautocare.com.

Fixed Right Guarantee:

We promise that the services we perform will be fixed right the first time. If the automotive repair or service was performed improperly, then we will re-perform the service at no additional charge to you, during the established warranty period.

On Time Guarantee:

We value your time. If your vehicle is not ready at the time we promised, we will offer a 10% discount on your next purchase (discount cannot exceed \$25.00) which is valid at any company-owned Firestone Complete Auto Care Store. The subsequent second visit must occur within one year of the original service. This discount can not be used to reduce outstanding debt.

What is Warrantied and for how long:

Most parts and services purchased at Firestone Complete Auto Care are covered by a minimum of twelve (12) months or 12,000 miles, whichever comes first, with some parts and services carrying a different warranty. Some exclusions may apply; please see details below. Warranties apply to parts installed and service performed on private passenger vehicles. This warranty is valid at Firestone Complete Auto Care locations.

Auto parts which prove to be unserviceable during the warranty period, will be replaced free of any additional charge for parts or labor, except as noted under "Exclusions", below.

SERVICE	PARTS	LABOR
Oil Change and Oil Filter	3 Months / 3,000 Miles	3 Months / 3,000 Miles
Air, Fuel, Cabin Air and Transmission Filter (for workmanship and material related issues)	6 Months / 6,000 Miles	6 Months / 6,000 Miles
Major Engine, Air Conditioning, and A/C Repairs	24 Months / 24,000 Miles	12 Months / 12,000 Miles
Standard Brake Service - Brakes Shoes, Disc Pads	12 Months / 12,000 Miles	12 Months / 12,000 Miles
Plus Brake Grease - Brake Grease, Disc Pads (1) Service Includes: Brake System Flush and Clean, Adjust Rear Axle (if applicable)	24 Months / 24,000 Miles	12 Months / 12,000 Miles
Premium Brake Service - Brake Shoes, Disc Pads, Calipers and/or Wheel Cylinders, and Brake Installation Hardware (1)	Lifetime (1)	Lifetime (1)
Shocks and Struts	Lifetime	12 Months / 12,000 Miles
Steering & Suspension Parts	Lifetime	12 Months / 12,000 Miles
Lubelina Alignment Service (1)	N/A (2)	Lifetime
Lifetime Wheel Balance (3)	Lifetime (3)	Lifetime (3)

ALL LIFETIME WARRANTIES ARE ONLY VALID FOR AS LONG AS THE ORIGINAL CUSTOMER OWNS THE VEHICLE.

- (1) Costs of additional brake system components including master cylinders, rotors, drums and all additional labor, are warrantied for a period of twelve (12) months or 12,000 miles, whichever comes first.
- (2) If parts are repaired to restore vehicle to manufacturer's alignment specifications, then those parts and the labor required to install them are not covered.
- (3) Lifetime balance is only warrantied so long as originally balanced tire remains on wheel. If needed, additional charge may apply for resetting the Tire Pressure Monitoring System (TPMS).

Other Service Warranty Exclusions: Replacement of anti-freeze or clamps is not included in the warranty on belts/radiator hoses. Cost of refrigerant and recharging of the air conditioning system is not included with the warranty on air conditioner parts or air conditioner compressors. Cost of additional brake system components, including rotors and drums and/or labor to restore Brake System to its safe proper operation is not included with the warranty on Brake Shoes, Disc Pads, Calipers and/or Wheel Cylinders and/or brake hardware. Batteries are covered by a separate warranty from the manufacturer.

Tire Warranties and Exclusions:

Tires purchased at Firestone Complete Auto Care are covered by a **Manufacturer's Limited Warranty** from workmanship and material related issues. This may also be covered by a **Supplemental Mileage Limited Warranty** which varies by tire brand and model. Information about these tire warranties is provided separately at the time of purchase.

GENERAL PROVISIONS (Applicable to all warranties)

THIS WARRANTY IS LIMITED TO THE PARTS AND SERVICES LISTED IN THIS DOCUMENT. This warranty covers only the original purchaser of the installed parts and/or services. WHERE WILL THE WARRANTIES BE HONORED? Take your vehicle to the Firestone Complete Auto Care Store which sold the warranted parts and/or service work, or any other Firestone Complete Auto Care Store with the listed Store. Call 1-800-LOCATE-US to find a company-owned location.

HOW CAN A CLAIM BE MADE UNDER THE WARRANTIES? The original invoice from the store at which the original work was performed must be presented in order to get the benefit of the warranty.

WHAT OTHER CONDITIONS APPLY? The obligations undertaken in these warranties are offered only on the above items and conditions, and may not be enlarged or altered by any other agreement. Limitation does not apply to products or vehicles used for commercial, racing, or off-road purposes, or to damage caused by abuse or accident to THE EXTENT PERMITTED BY LAW. BRIDGESTONE RETAIL OPERATIONS, LLC, AND ITS FIRESTONE COMPLETE AUTO CARE STORES DISCLAIM LIABILITY FOR INCIDENTAL OR CONSEQUENTIAL DAMAGES. Some states do not allow the exclusion or limitation of incidental or consequential damages, so the above limitation or exclusion may not apply to you.

CONSUMER RIGHTS: This warranty does not limit your legal rights, and you may also have other rights which vary from state to state.

© 2015 Bridgestone Retail Operations, LLC. All rights reserved. Bridgestone/Firestone North American Tire, LLC, 535 Marriot Drive, Nashville, TN 37214

LIMITED NATIONWIDE SERVICE WARRANTY

Your Complete Satisfaction is Important to us:

Thank you for your purchase. At Firestone Complete Auto Care, our goal is complete customer satisfaction. If you have any questions or concerns regarding the service you received or our nationwide limited warranty, **please contact the Manager** of the store listed on the front of this document. You may also contact Bridgestone Retail Operations, LLC Customer Retention toll free at 1-800-367-3872 or visit our website at www.firestonecompleteautocare.com.

Fixed Right Guarantee:

We promise that the services we perform will be fixed right the first time. If the automotive repair or service was performed improperly, then we will re-perform the service at no additional charge to you, during the established warranty period.

On Time Guarantee:

We value your time. If your vehicle is not ready at the time we promised, we will offer a 10% discount on your next purchase (discount cannot exceed \$25.00) which is valid at any company-owned Firestone Complete Auto Care Store. The subsequent second visit must occur within one year of the original service. This discount can not be used to reduce outstanding debt.

What is Warrantied and for how long:

Most parts and services purchased at Firestone Complete Auto Care are covered by a minimum of twelve (12) months or 12,000 miles, whichever comes first, with some parts and services carrying a different warranty. Some exclusions may apply; please see details below. Warranties apply to parts installed and service performed on private passenger vehicles. This warranty is valid at Firestone Complete Auto Care locations.

Auto parts which prove to be unserviceable during the warranty period, will be replaced free of any additional charge for parts or labor, except as noted under "Exclusions" below.

SERVICE	PARTS	LABOR
Oil Change and Oil Filter	3 Months / 3,000 Miles	3 Months / 3,000 Miles
Air Filter, Cabin Air and Transmission Filters (for workmanship and material related issues)	6 Months / 6,000 Miles	6 Months / 6,000 Miles
Free Tire Rotation, Inflation and Alignment	24 Months / 24,000 Miles	12 Months / 12,000 Miles
Standard Brake Service - Brake Shoes, Disc Pads	12 Months / 12,000 Miles	12 Months / 12,000 Miles
Plus Brake Sepsies, Brake Shocks, Coil Springs, 11 Steering Knuckles, Brake System Lubrication, Clean & Adjust Rear Axle (if applicable)	24 Months / 24,000 Miles	12 Months / 12,000 Miles
Front and Rear Service - Brake Shoes, Disc Pads, Calipers and/or Wheel Cylinders, and Brake Installation Hardware (1)	Lifetime (1)	Lifetime (1)
Coilovers and Sphers	Lifetime	12 Months / 12,000 Miles
Steering & Suspension Parts	Lifetime	12 Months / 12,000 Miles
Lifetime Alignment Service (1)	N/A (2)	Lifetime
Lifetime Wheel Balance (3)	Lifetime (3)	Lifetime (3)

ALL LIFETIME WARRANTIES ARE ONLY VALID FOR AS LONG AS THE ORIGINAL CUSTOMER OWNS THE VEHICLE.

- (1) Costs of additional brake system components, including master cylinders, rotors, drums and all additional labor, are warranted for a period of twelve (12) months or 12,000 miles, whichever comes first.
- (2) If the vehicle is found to be out of alignment a manufacturer's alignment specifications, then those parts and the labor required to install them are not covered.
- (3) Lifetime balance is only warranted so long as originally balanced tire remains on wheel. If needed, additional charge may apply for resetting the Tire Pressure Monitoring System (TPMS).

Other Lifetime Warranty Exclusions: Replacement of anti-freeze or clamps is not included in the warranty on belts/radiator hoses. Cost of refrigerant and recharging of air conditioning system is not included in the warranty on air conditioner parts or air conditioner compressors. Cost of additional brake system components, including rotors and drums and labor to the Brake System to its safe proper operation is not included with the warranty on Brake Shoes, Disc Pads, Calipers and/or Wheel Cylinders. Other exclusions and limitations are covered by a separate warranty from the manufacturer.

Firestone Complete Auto Care Locations

Services performed at Firestone Complete Auto Care are covered by a **Manufacturer's Limited Warranty** from workmanship and material related issues. Services performed are covered by a **Supplemental Mileage Limited Warranty** which varies by tire brand and model. Information about these fire warranties is included separately at the time of purchase.

GENERAL PROVISIONS (Applicable to all warranties)

This warranty is provided by Firestone Complete Auto Care, a Bridgestone Retail Operations, LLC store. This warranty covers only the original purchaser of the installed parts and/or services, whether retail or commercial, and is non-transferable. It applies to your vehicle at the Firestone Complete Auto Care Store which sold the warranted parts and/or service work, or any other Firestone Complete Auto Care Store in the United States. Call 1-800-LCCARE-US to find a company owned location.

HOW CAN I CLAIM MY WARRANTY UNDER THE WARRANTIES? The original invoice from the store at which the original work was performed must be presented in order to get the benefit of the warranty.

WHAT DOES NOT APPLY? The obligations undertaken in these warranties are offered only on the above items and conditions, and may not be enlarged or altered by any other warranty document. They do not apply to products or vehicles used for commercial, racing, or off-road purposes, or to damage caused by abuse or accident. **TO THE EXTENT PERMITTED BY LAW, BRIDGESTONE RETAIL OPERATIONS, LLC, AND ITS FIRESTONE COMPLETE AUTO CARE STORES DISCLAIM LIABILITY FOR INCIDENTAL AND CONSEQUENTIAL DAMAGES.** Some states do not allow the exclusion or limitation of incidental or consequential damages, so the above limitation on this exclusion may not apply to you.

CONSUMER RIGHTS: This warranty does not affect your specific legal rights, and you may also have other rights which vary from state to state.

© 2011 Firestone Complete Auto Care. All rights reserved. Printed in black ink on a stamp or if none, by Bridgestone/Firestone North American Tire, LLC, 535 Marriott Drive, Nashville, TN 37214.

WORK ORDER #
103627
02/09/10 04:05PM

FIRESTONE COMPLETE AUTO CARE
605 W WELLS ST
MILWAUKEE, WI. 53203

SERVICE ADVISOR
03 AARON
414.278.7404

EDWARDS, GENEVA
2030 N 24TH ST
MILWAUKEE, WI 53205-1005
414.297.8180

1993 TOYOTA COROLLA [BLUE]
4-1587 1.6L DOHC
LIC # 865MTV WI VIN # 1NXAE04EOPZ103476
IN 02/09/10 1:30PM EST. MILEAGE 156,000

Store # 020168

Recommended Services not Authorized by Customer

Status	Description	Qty	Unit Price		Job Total	Extended Price	Total
			Parts	Labor			
Recmd	ALIGNMENT SERVICE					74.99	
	Symptom:-	0	0.00	0.00			
	TIRE MAINT						
Recmd	ALIGNMENT SERVICE	1	0.00	74.99			
Recmd	PREMIUM ALIGNMENT SERVICE					159.99	
	Symptom:-	0	0.00	0.00			
	TIRE MAINT						
	LIFETIME ALIGNMENT SERVICE	1	0.00	159.99			
	Preventive Maintenance - Suggested					> 234.98	234.98
Recmd	EVER-WEAR TRANSMISSION FLUID FLUSH					129.99	
	TRANSMISSION FLUID (UP TO 15 QUARTS)	1	40.00	0.00			
	EA-63P TRANSMISSION FLUID SERVICE KIT	1	19.99	0.00			
	TRANSMISSION FLUID EXCHANGE LABOR	1	0.00	70.00			
Recmd	EVER-WEAR RADIATOR SERVICE / NEW ANTIFREEZE					95.99	
	ANTI-FREEZE GALLON	2	12.00	0.00			
	COOLANT FLUSH LABOR	1	0.00	57.00			
	TLF108P COOLANT FLUSH W/SEALER AND	1	14.99	0.00			
	CONDITIONER						
Recmd	: FLUSH BRAKE SYSTEM :					79.99	
	BRAKE SYSTEM FLUSH - FLUID	1	19.99	0.00			
	BRAKE SYSTEM - FLUSH LABOR	1	0.00	60.00			
	Scheduled Maintenance - Suggested					> 305.97	540.95

Recommended Parts: 118.97
Labor: 421.98
Subtotal: 540.95
Shop Supplies: 25.00
Tax (5.60%): 31.69
Total: 597.64

THESE PRICES ARE VALID FOR 30 DAYS

Labor charges are based on 'Menu Items' of a predetermined amount or the flat rate charged per the Mitchell Labor Manual @ \$94.00/hr.

ALL PARTS ARE NEW UNLESS NOTED OTHERWISE

MOTOR VEHICLE REPAIR PRACTICES ARE REGULATED BY CHAPTER ATCP 132, WIS. ADM. CODE, ADMINISTERED BY THE BUREAU OF CONSUMER PROTECTION, WISCONSIN DEPT. OF AGRICULTURE, TRADE AND CONSUMER PROTECTION, P. O. BOX 8911, MADISON, WISCONSIN 53708-8911

LIMITED NATIONWIDE SERVICE WARRANTY

Your Complete Satisfaction is Important to us:

Thank you for your purchase. At Firestone Complete Auto Care, our goal is complete customer satisfaction. If you have any questions or concerns regarding the service you received or our nationwide limited warranty, **please contact the Manager** of the store listed on the front of this document. You may also contact Bridgestone Retail Operations, LLC Customer Retention toll free at 1-800-367-3872 or visit our website at www.firestonecompleteautocare.com.

Fixed Right Guarantee:

We promise that the services we perform will be fixed right the first time. If the automotive repair or service was performed improperly, then we will re-perform the service at no additional charge to you, during the established warranty period.

On Time Guarantee:

We value your time. If your vehicle is not ready at the time we promised, we will offer a 10% discount on your next purchase (discount cannot exceed \$25.00) which is valid at any company-owned Firestone Complete Auto Care Store. The subsequent second visit must occur within one year of the original service. This discount can not be used to reduce outstanding debt.

What is Warrantied and for how long:

Most parts and services purchased at Firestone Complete Auto Care are covered by a minimum of twelve (12) months or 12,000 miles, whichever comes first, with some parts and services carrying a different warranty. Some exclusions may apply; please see details below. Warranties apply to parts installed and service performed on private passenger vehicles. This warranty is valid at Firestone Complete Auto Care locations.

Auto parts which prove to be unserviceable during the warranty period, will be replaced free of any additional charge for parts or labor, except as noted under "Exclusions", below.

SERVICE	PARTS	LABOR
Oil Change and Oil Filter	3 Months / 3,000 Miles	3 Months / 3,000 Miles
Air, Fuel, Cabin Air and Transmission Filters (for workmanship and material related issues)	6 Months / 6,000 Miles	6 Months / 6,000 Miles
Major Remanufactured Starters and Alternators	24 Months/ 24,000 Miles	12 Months / 12,000 Miles
Standard Brake Service - Brakes Shoes, Disc Pads	12 Months / 12,000 Miles	12 Months / 12,000 Miles
Premium Brake Service - Brake Shoes, Disc Pads (1) Service Includes: Brake System Flush and Clean / Adjust Rear Axle (if applicable)	24 Months/ 24,000 Miles	12 Months / 12,000 Miles
Premium Brake Service - Brake Shoes, Disc Pads, Calipers and / or Wheel Cylinders and Brake Installation Hardware (1)	Lifetime (1)	Lifetime (1)
Shocks and Struts	Lifetime	12 Months / 12,000 Miles
Steering & Suspension Parts	Lifetime	12 Months / 12,000 Miles
Lifetime Alignment Service (2)	N/A (2)	Lifetime
Lifetime Wheel Balance (3)	Lifetime (3)	Lifetime (3)

ALL LIFETIME WARRANTIES ARE ONLY VALID FOR AS LONG AS THE ORIGINAL CUSTOMER OWNS THE VEHICLE.

- (1) Costs of additional brake system components, including master cylinders, rotors, drums and all additional labor, are warrantied for a period of twelve (12) months or 12,000 miles, whichever comes first.
- (2) Repairs are required to restore vehicle to manufacturer's alignment specifications, then those parts and the labor required to install them are not covered.
- (3) Lifetime balance is only warrantied so long as originally balanced tire remains on wheel. If needed, additional charge may apply for resetting the Tire Pressure Monitoring System (TPMS).

Other Service Warranty Exclusions: Replacement of anti-freeze or clamps is not included in the warranty on belts/radiator hoses. Cost of refrigerant and recharging of air conditioning system is not included with the warranty on air conditioner parts or air conditioner compressors. Cost of additional brake system components, including master cylinders and/or labor to restore Brake System to its safe proper operation is not included with the warranty on Brake Shoes, Disc Pads, Calipers and/or Wheel Cylinders and other hardware. Brakes are covered by a separate warranty from the manufacturer.

Manufacturer's Limited Warranties:

Parts purchased at Firestone Complete Auto Care are covered by a **Manufacturer's Limited Warranty** from workmanship and material related issues. These parts may be covered by a **Supplemental Mileage Limited Warranty** which varies by tire brand and model. Information about these tire warranties is provided on the front of the tire at the time of purchase.

GENERAL PROVISIONS (Applicable to all warranties)

WHERE WILL THE WARRANTIES BE HONORED? This warranty covers only the original purchaser of the installed parts and/or services. WHERE WILL THE WARRANTIES BE HONORED? Take your vehicle to the Firestone Complete Auto Care Store which sold the warrantied parts and/or service work, or any other Firestone Complete Auto Care Store in the United States. Call 1-800-LOCATE-US to find a company owned location.

HOW CAN A CLAIM BE MADE UNDER THE WARRANTIES? The original invoice from the store at which the original work was performed must be presented in order to get the benefit of the warranty.

WHAT OTHER LIMITATIONS APPLY? The obligations undertaken in these warranties are offered only on the above items and conditions, and may not be enlarged or altered by anyone. This warranty document does not apply to products or vehicles used for commercial, racing, or off-road purposes, or to damage caused by abuse or accident. TO THE EXTENT PERMITTED BY LAW, BRIDGESTONE RETAIL OPERATIONS, LLC, AND ITS FIRESTONE COMPLETE AUTO CARE STORES DISCLAIM LIABILITY FOR INCIDENTAL OR CONSEQUENTIAL DAMAGES. Some states do not allow the exclusion or limitation of incidental or consequential damages, so the above limitation of damages may not apply to you.

DOES THIS WARRANTY AFFECT YOUR OTHER LEGAL RIGHTS? This warranty does not affect your other legal rights, and you may also have other rights which vary from state to state.

© 2011 Bridgestone Retail Operations, LLC. Printed in stamp or, if none, by Bridgestone/Firestone North American Tire, LLC, 535 Marriot Drive, Nashville, TN 37214.

COURTESY CHECK

INSPECT ALL ITEMS IN TOP SECTION

Year 1998 Make NISSAN Model Corolla
11 NXA E6 41G DPZ 1103476

Eng. Size _____ SOHC OHV DIESEL Trans. Auto
 DOHC HYBRID Manu
 Hubcap Missing Windshield Cracked Scratches/Dents N
 Lic. # 865 MTN State Inspection Due Month _____ Year _____

MILEAGE: 49260

MAINTENANCE SERVICES/STARTING

INSPECT	VISUAL			SCHED. MAINT.	WHY RECOMMENDED
	OK	SUG	REQ		
WIPER BLADES	<input checked="" type="checkbox"/>			<input checked="" type="checkbox"/>	<input type="checkbox"/> FRONT <input type="checkbox"/> REAR
HEAD LIGHTS	<input checked="" type="checkbox"/>			<input checked="" type="checkbox"/>	
TURN SIGNALS	<input checked="" type="checkbox"/>			<input checked="" type="checkbox"/>	<input type="checkbox"/> BRAKE <input type="checkbox"/> TURN SIGNAL <input type="checkbox"/> LICENSE PLATE <input type="checkbox"/> PARKING
AIR FILTER	<input checked="" type="checkbox"/>			<input checked="" type="checkbox"/>	
CABIN AIR FILTER	<input checked="" type="checkbox"/>			<input checked="" type="checkbox"/>	
CV VALVE	<input checked="" type="checkbox"/>			<input checked="" type="checkbox"/>	
WASHER FLUID	<input checked="" type="checkbox"/>			<input checked="" type="checkbox"/>	
OIL LEVEL	<input checked="" type="checkbox"/>			<input checked="" type="checkbox"/>	
POWER STR. BATTERY LEVEL	<input checked="" type="checkbox"/>			<input checked="" type="checkbox"/>	
MASTER CYL. FLUID LEVEL	<input checked="" type="checkbox"/>			<input checked="" type="checkbox"/>	<input type="checkbox"/> BRAKE INSPECTION
WASHER FLUID FLUSH	<input checked="" type="checkbox"/>			<input checked="" type="checkbox"/>	TEST STRIP FAILURE <input checked="" type="checkbox"/>
TRANS. SERVICE (AUTO / MANUAL)	<input checked="" type="checkbox"/>			<input checked="" type="checkbox"/>	<input type="checkbox"/> FLUSH <input type="checkbox"/> PAN SERVICE
COOLANT LEVEL / FLUSH	<input checked="" type="checkbox"/>			<input checked="" type="checkbox"/>	TYPE _____
COOLANT HOSES	<input checked="" type="checkbox"/>			<input checked="" type="checkbox"/>	<input type="checkbox"/> UPPER <input type="checkbox"/> LOWER <input type="checkbox"/> BYPASS <input type="checkbox"/> HEATER
BELTS	<input checked="" type="checkbox"/>			<input checked="" type="checkbox"/>	<input checked="" type="checkbox"/> ALT <input type="checkbox"/> PS <input type="checkbox"/> BELTS 1 2 3 4 <input checked="" type="checkbox"/> A/C <input type="checkbox"/> IAP
BATTERY 2-18 TEST	<input checked="" type="checkbox"/>			<input checked="" type="checkbox"/>	<input checked="" type="checkbox"/> GOOD <input type="checkbox"/> MARGINAL <input type="checkbox"/> REPLACE
BATTERY ACCESSORIES	<input checked="" type="checkbox"/>			<input checked="" type="checkbox"/>	<input type="checkbox"/> CABLE ENDS/CABLES <input type="checkbox"/> POS <input type="checkbox"/> NEG <input type="checkbox"/> HOLD DOWNS
BATTERY GARD	<input checked="" type="checkbox"/>			<input checked="" type="checkbox"/>	<input type="checkbox"/> CORROSION <input checked="" type="checkbox"/> PREVENTIVE

TIRES AND TIRE MAINTENANCE

TIRE SIZE: F R 185/65R14 FR-380 SPEED RATING 9 RUN FLAT Y TPMS Y

INSPECT	VISUAL			TREAD DEPTH 32nds		X FWD <input type="checkbox"/> RWD <input type="checkbox"/> 4WD/AWI
	OK	SUG	REQ	OUTER	INNER	
LEFT FRONT	<input checked="" type="checkbox"/>			<input checked="" type="checkbox"/>	<input checked="" type="checkbox"/>	<input type="checkbox"/> EDGEWEAR <input type="checkbox"/> CRACKING <input type="checkbox"/> CUPPING <input type="checkbox"/> NAILS <input type="checkbox"/> CUTS <input type="checkbox"/> REPAIRABLE <input type="checkbox"/> IRREGULARITY <input type="checkbox"/> NON-REPAIRABLE
PSI IN: <u>25</u> PSI OUT: <u>30</u>				<u>9</u>	<u>9</u>	
RIGHT FRONT	<input checked="" type="checkbox"/>			<input checked="" type="checkbox"/>	<input checked="" type="checkbox"/>	<input type="checkbox"/> EDGEWEAR <input type="checkbox"/> CRACKING <input type="checkbox"/> CUPPING <input type="checkbox"/> NAILS <input type="checkbox"/> CUTS <input type="checkbox"/> REPAIRABLE <input type="checkbox"/> IRREGULARITY <input type="checkbox"/> NON-REPAIRABLE
PSI IN: <u>25</u> PSI OUT: <u>30</u>				<u>9</u>	<u>9</u>	
RIGHT REAR	<input checked="" type="checkbox"/>			<input checked="" type="checkbox"/>	<input checked="" type="checkbox"/>	<input type="checkbox"/> EDGEWEAR <input type="checkbox"/> CRACKING <input type="checkbox"/> CUPPING <input type="checkbox"/> NAILS <input type="checkbox"/> CUTS <input type="checkbox"/> REPAIRABLE <input type="checkbox"/> IRREGULARITY <input type="checkbox"/> NON-REPAIRABLE
PSI IN: <u>25</u> PSI OUT: <u>30</u>				<u>9</u>	<u>9</u>	
LEFT REAR	<input checked="" type="checkbox"/>			<input checked="" type="checkbox"/>	<input checked="" type="checkbox"/>	<input type="checkbox"/> EDGEWEAR <input type="checkbox"/> CRACKING <input type="checkbox"/> CUPPING <input type="checkbox"/> NAILS <input type="checkbox"/> CUTS <input type="checkbox"/> REPAIRABLE <input type="checkbox"/> IRREGULARITY <input type="checkbox"/> NON-REPAIRABLE
PSI IN: <u>25</u> PSI OUT: <u>30</u>				<u>9</u>	<u>9</u>	
SPARE	<input checked="" type="checkbox"/>			<input checked="" type="checkbox"/>	<input checked="" type="checkbox"/>	<input type="checkbox"/> EDGEWEAR <input type="checkbox"/> CRACKING <input type="checkbox"/> CUPPING <input type="checkbox"/> NAILS <input type="checkbox"/> CUTS <input type="checkbox"/> REPAIRABLE <input type="checkbox"/> IRREGULARITY <input type="checkbox"/> NON-REPAIRABLE
PSI IN: _____ PSI OUT: _____						
TIRE MAINTENANCE	<input checked="" type="checkbox"/>			<input type="checkbox"/>	<input type="checkbox"/>	<input type="checkbox"/> ROTATION <input type="checkbox"/> BALANCE
ALIGNMENT CHECK	<input checked="" type="checkbox"/>			<input type="checkbox"/>	<input type="checkbox"/>	<input type="checkbox"/> MAINTENANCE <input type="checkbox"/> TIRE WEAR

Complete VEHICLE INSPECTION

IN ADDITION TO THE ABOVE INSPECT ALL ITEMS BELOW

MAINTENANCE SERVICES/STARTING

INSPECT	VISUAL			SCHED. MAINT.	WHY RECOMMENDED
	OK	SUG	REQ		
BART / CHARGE	<input checked="" type="checkbox"/>			<input checked="" type="checkbox"/>	
BELT TENSIONER	<input checked="" type="checkbox"/>			<input checked="" type="checkbox"/>	
PARK PLUGS	<input checked="" type="checkbox"/>			<input checked="" type="checkbox"/>	
FUEL FILTER	<input checked="" type="checkbox"/>			<input checked="" type="checkbox"/>	
FUEL SYSTEM SERVICE	<input checked="" type="checkbox"/>			<input checked="" type="checkbox"/>	
IGNITION WIRES	<input checked="" type="checkbox"/>			<input checked="" type="checkbox"/>	
VALVE COVER GASKET	<input checked="" type="checkbox"/>			<input checked="" type="checkbox"/>	
POWER STEERING OSE	<input checked="" type="checkbox"/>			<input checked="" type="checkbox"/>	<input type="checkbox"/> PRESSURE <input type="checkbox"/> RETURN
DRIVING BELT	<input checked="" type="checkbox"/>			<input checked="" type="checkbox"/>	

EXHAUST

EXHAUST SYSTEM	<input checked="" type="checkbox"/>			<input checked="" type="checkbox"/>	<input type="checkbox"/> INTERMEDIATE PIPE <input type="checkbox"/> MUFFLER <input type="checkbox"/> TAILPIPE
----------------	-------------------------------------	--	--	-------------------------------------	---

STEERING AND SUSPENSION

SHOCK JOINT	<input checked="" type="checkbox"/>			<input checked="" type="checkbox"/>	<input type="checkbox"/> FRONT <input type="checkbox"/> REAR
DRIVER/PITMAN ARM	<input checked="" type="checkbox"/>			<input checked="" type="checkbox"/>	<input type="checkbox"/> IDLER <input type="checkbox"/> PITMAN
LOWER CONTROL ARM	<input checked="" type="checkbox"/>			<input checked="" type="checkbox"/>	
SHOCK BUSHINGS	<input checked="" type="checkbox"/>			<input checked="" type="checkbox"/>	<input type="checkbox"/> CONTROL ARM <input type="checkbox"/> SWAY BAR <input type="checkbox"/> FRONT REAR
SHOCK PINS	<input checked="" type="checkbox"/>			<input checked="" type="checkbox"/>	<input type="checkbox"/> FRONT <input type="checkbox"/> REAR <input type="checkbox"/> LEFT <input type="checkbox"/> RIGHT
SHOCK ROD ENDS	<input checked="" type="checkbox"/>			<input checked="" type="checkbox"/>	<input type="checkbox"/> L OUT <input type="checkbox"/> L IN <input type="checkbox"/> R IN <input type="checkbox"/> R OUT <input type="checkbox"/> SLEEVE(S)
SHOCK ALL JOINTS	<input checked="" type="checkbox"/>			<input checked="" type="checkbox"/>	<input type="checkbox"/> L UPPER <input type="checkbox"/> R UPPER <input type="checkbox"/> L LOWER <input type="checkbox"/> R LOWER SPEC _____ ACTUAL _____
SHOCK SHOCK & PINION ASSEMBLY	<input checked="" type="checkbox"/>			<input checked="" type="checkbox"/>	
SHOCK CV JOINTS	<input checked="" type="checkbox"/>			<input checked="" type="checkbox"/>	<input type="checkbox"/> L OUT <input type="checkbox"/> L IN <input type="checkbox"/> R IN <input type="checkbox"/> R OUT
SHOCK CV JOINTS	<input checked="" type="checkbox"/>			<input checked="" type="checkbox"/>	<input type="checkbox"/> L OUT <input type="checkbox"/> L IN <input type="checkbox"/> R IN <input type="checkbox"/> R OUT
SHOCK STRUTS	<input checked="" type="checkbox"/>			<input checked="" type="checkbox"/>	<input type="checkbox"/> FRONT <input type="checkbox"/> REAR <input type="checkbox"/> LEFT <input type="checkbox"/> RIGHT
SHOCK SHOCKS	<input checked="" type="checkbox"/>			<input checked="" type="checkbox"/>	<input type="checkbox"/> FRONT <input type="checkbox"/> REAR <input type="checkbox"/> LEFT <input type="checkbox"/> RIGHT

REPAIR / REPLACEMENT SUGGESTED

- 1) CLOSE TO END OF USEFUL LIFE
- 2) ADDRESS CUSTOMER REQUEST/NEED/CONVENIENCE
- 3) COMPLY WITH MANUFACTURER RECOMMENDATION
- 4) TECHNICIAN RECOMMENDATION FROM EXPERIENCE

BRAKES Visual Inspection Only

INSPECT	VISUAL			WHY RECOMMENDED
	OK	SUG	REQ	
FRONT PADS	<input checked="" type="checkbox"/>			LF <input checked="" type="checkbox"/> FRONT <input type="checkbox"/> RF <input type="checkbox"/> 32nds OR % WORN
FRONT CALIPERS	<input checked="" type="checkbox"/>			ABS Y N
FRONT ROTORS	<input checked="" type="checkbox"/>			LF ROTOR <input type="checkbox"/> RF ROTOR <input type="checkbox"/>
MACHINE TO: _____ / DISCARD: _____				ACT. _____ ACT. _____
REAR SHOES/PADS	<input checked="" type="checkbox"/>			LR <input checked="" type="checkbox"/> REAR <input type="checkbox"/> RR <input type="checkbox"/> 32nds OR % WORN
REAR WHEEL CYL	<input checked="" type="checkbox"/>			ABS Y N
REAR DRUMS/ROTORS	<input checked="" type="checkbox"/>			LR DRUM/ROTOR <input type="checkbox"/> RR DRUM/ROTOR <input type="checkbox"/>
MACHINE TO: _____ / DISCARD: _____				ACT. _____ ACT. _____
HARDWARE/ADJUSTERS	<input checked="" type="checkbox"/>			<input type="checkbox"/> FRONT <input type="checkbox"/> REAR
REAR CLEAN/ADJUST	<input checked="" type="checkbox"/>			
WHEEL BEARING REPACK BEARINGS/SEALS	<input checked="" type="checkbox"/>			WHEEL BEARING REPACK <input type="checkbox"/> FRONT <input type="checkbox"/> REAR <input type="checkbox"/> BEARINGS/SEALS <input type="checkbox"/> FRONT <input type="checkbox"/> REAR
BRAKE HOSE(S)	<input checked="" type="checkbox"/>			<input type="checkbox"/> LF <input type="checkbox"/> RF <input type="checkbox"/> LR <input type="checkbox"/> RR
PARKING CABLES	<input checked="" type="checkbox"/>			<input type="checkbox"/> LEFT <input type="checkbox"/> RIGHT <input type="checkbox"/> FRONT

NOTES: Cut in sidewall, cannot repair

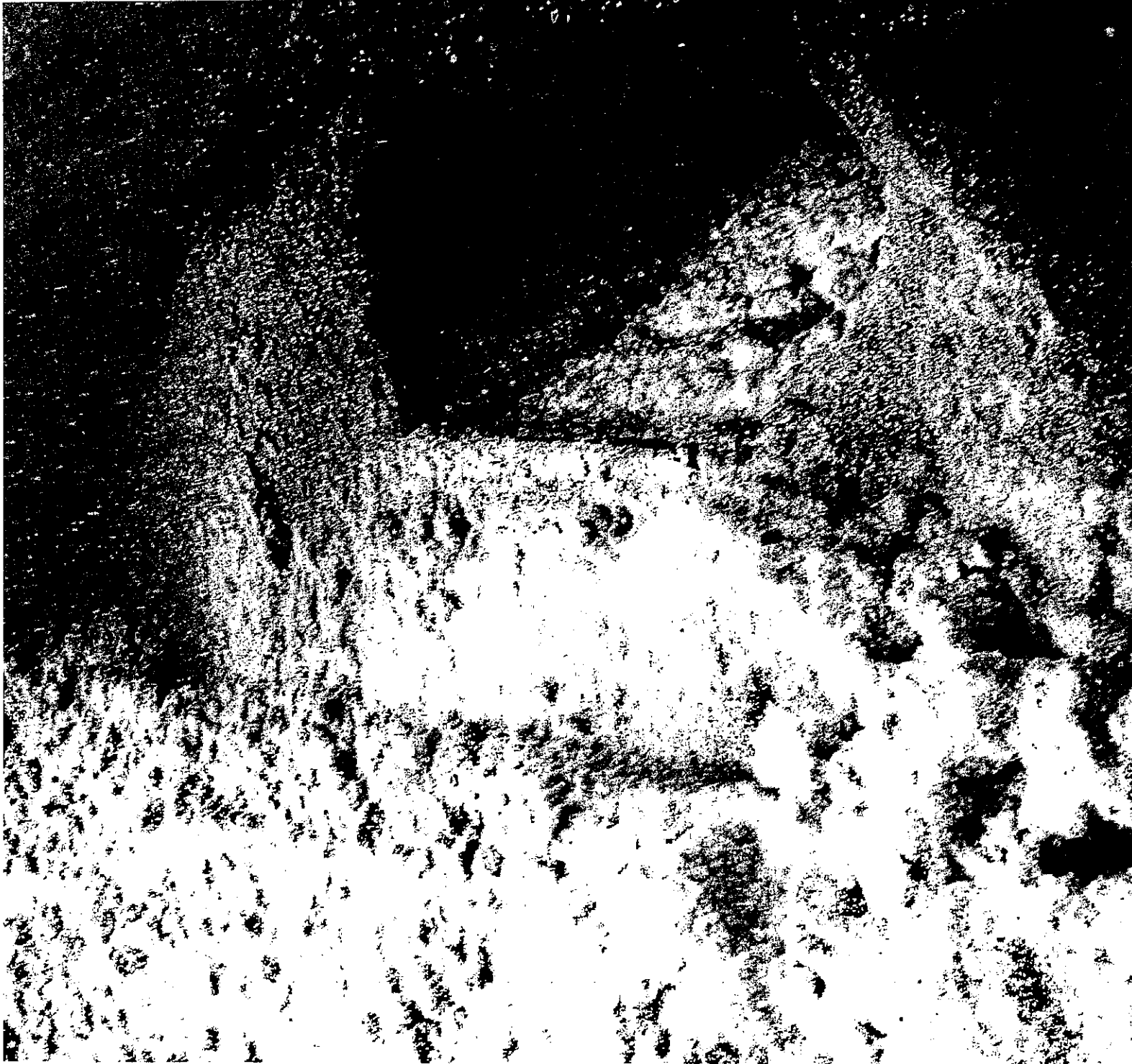
STEP 5

INSPECTED BY 77

STEP 7

RE-INSPECTED BY _____

PLEASE READ
INFORMATION
ON THE BACK
OF THE PICTURES



← OME → WINTER Storm

DATE - TIME

FEB 09, 10 (TUES day at 1:20 PM)

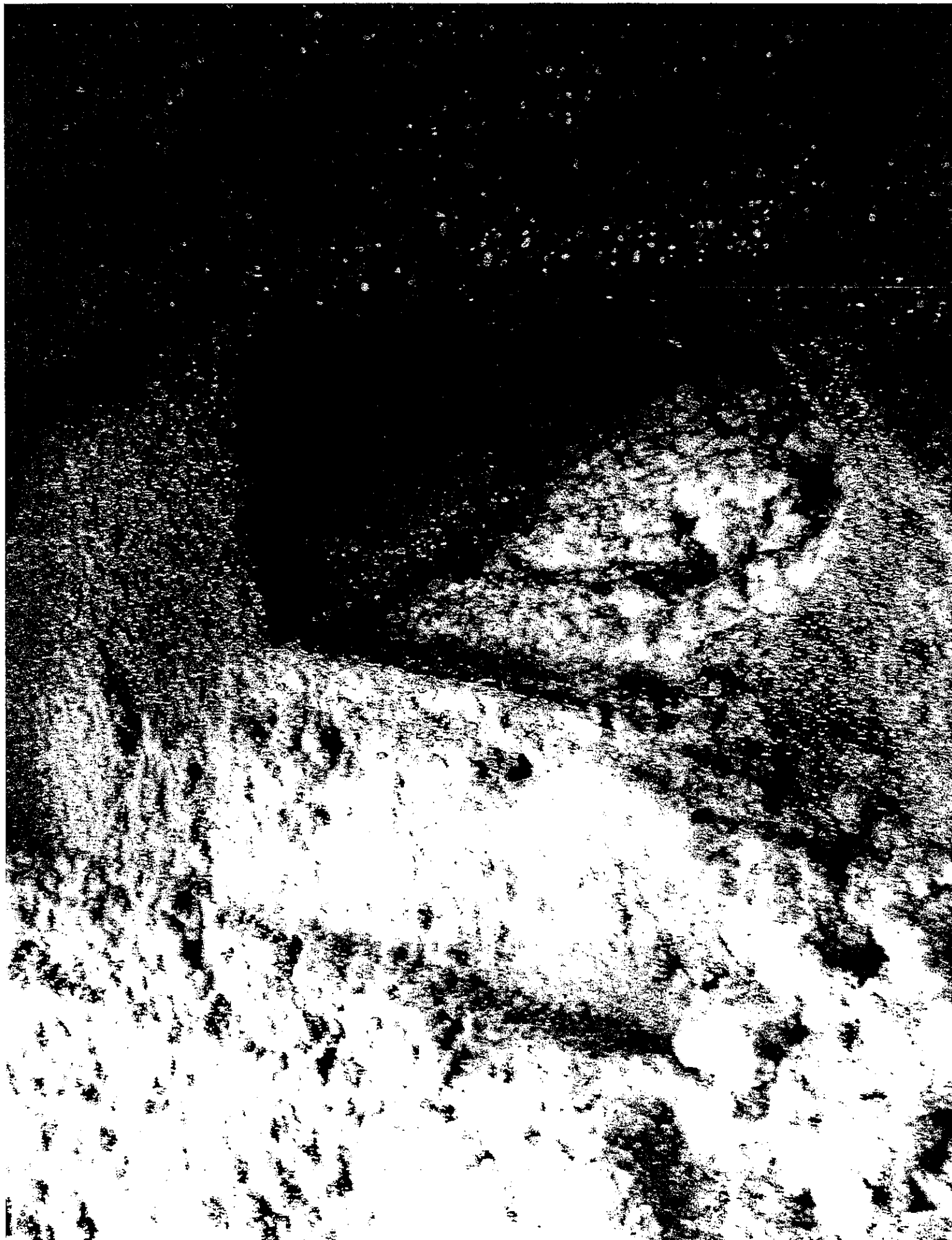
INCIDENT LOCATION

819 N 6TH STREET (MILW. STATE OFFICE Building)

CLAIMANT: GENEVA EDWARDS

2030 N 24 ST
MILW. WI 53205

"DEEP POT HOLE"



← Two → WINTER Storm

FEB. 09, 2010 (Tues.) AT 1:26 PM Accident / Incident
happen

CLAIMANT: Geneva Edwards
2030 N 24 ST
MILWA, WI 53205

"DEEP POT HOLE"



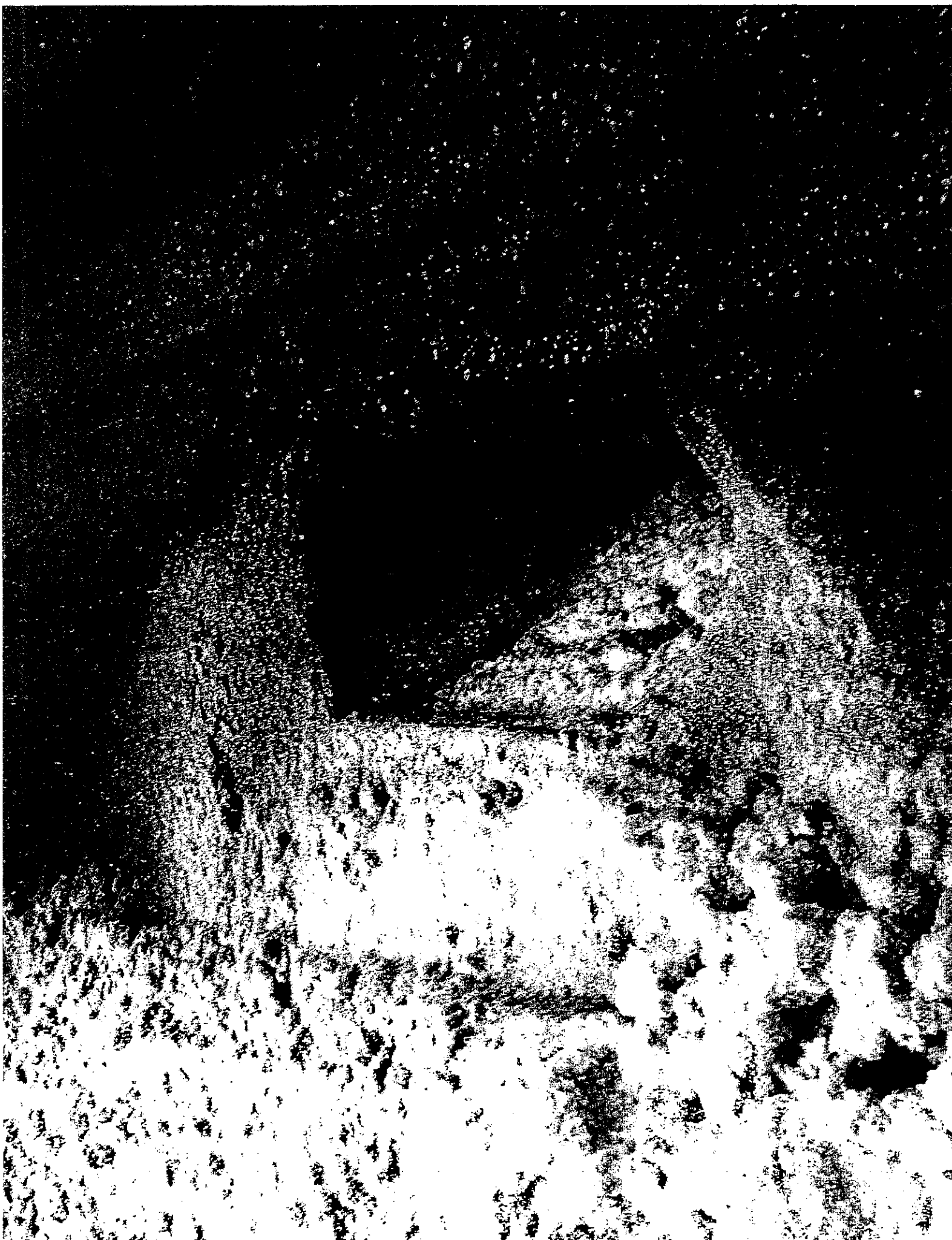
€ THREE → WINTER STORM

FEB 09, 10 TUES. AT 1:20 PM

INCIDENT HAPPEN

CLAIMANT: Geneva Edwards
2030 N 24 ST
MILW WI 53205

DEEP POTHOLE



⇐ FOUR → WINTER STORM

CLAIMANT: GENEVA EDWARDS
2036 N 24 ST
MILWAUKEE WI 53205

DEEP POTHOLE

78



← FIVE →

Chaumont: GENEVA Edwards
2036 → 24 ST
MILW WI 53205

DEEP POTHOLE



← SIX →

Chaumont: Geneva Edwards
2030 N 24 ST
MILW, WI 53205

DEEP POT HOLE



← SEVEN →

Chamant: GENEVA Edwards
2030 N 24 ST
MILWA, WI 53205

DEEP POTHOLE



← EIGHT →

Chaimant: Geneva Edwards
2036 N 24 ST
MILWAU, WI 53205

DEEP POT HOLE



←mine →

Chaimant^o: Geneva Edwards
2030 N 24 ST
MILW WI 53265

DEEP POT HOLE



← TEN →

Chaumont: GENEVA Edwards
2030 N 24 ST
MILWAU, WI 53205

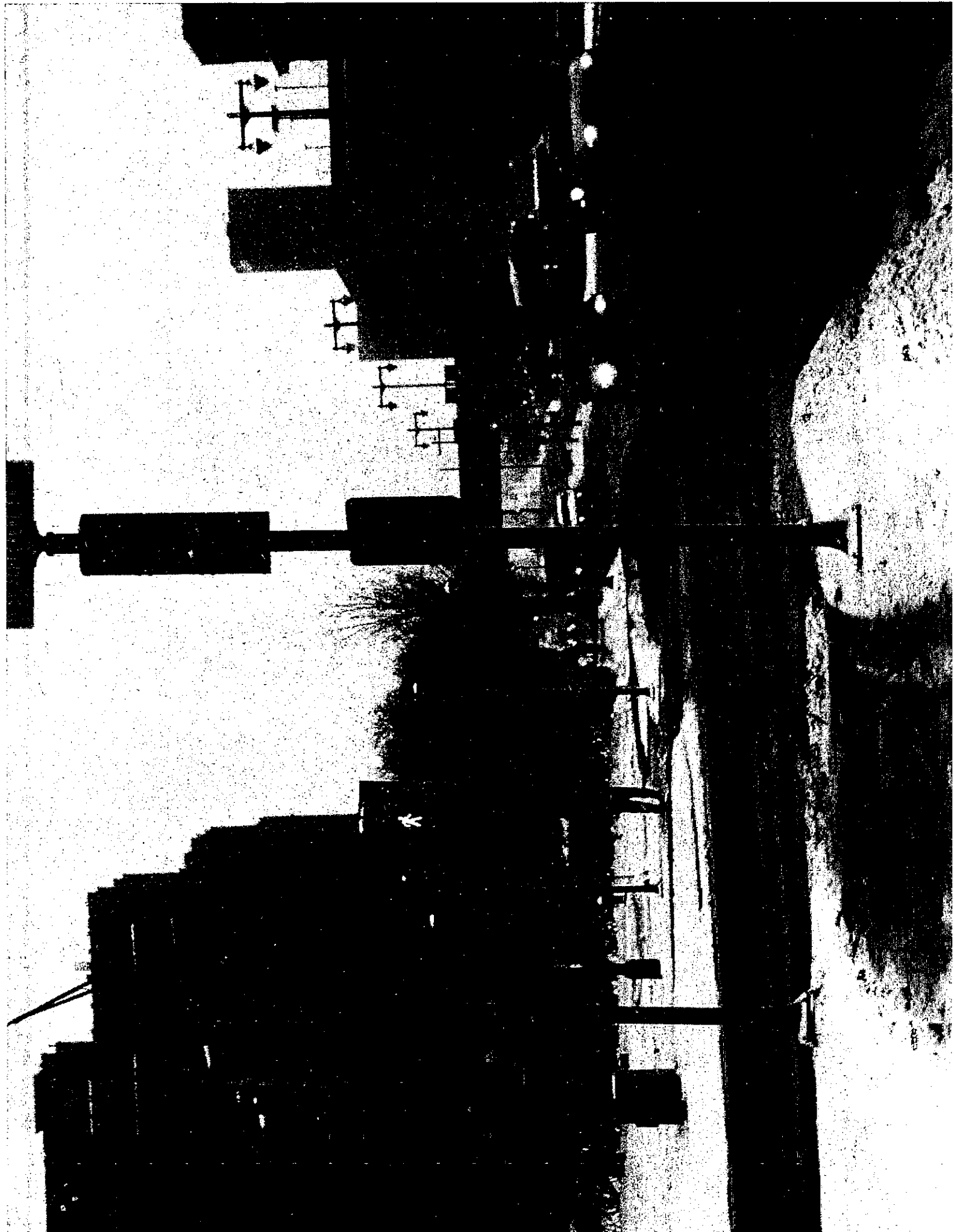
RE: DEEP POTHOLE



← ELEYEN →

Chaimant: Geneva Edwards
2030 N 24 ST
MILWAUKEE WI 53205

DEEP POT HOLE



← TWELVE →

Chamant: Geneva Edwards
2030 N 24 ST
MILWAU, WI 53205

DEEP POTHOLE



← → THIRTEEN

THE HOLE

Claimant: Geneva Edwards
2030 N 24 ST
MILWAU, WI 53205

RE: DEEP POT HOLE