

426

N.E. 1/4 SEC. 31, T.7N., R.22E.

C.S.M. NO. 3997

PAR. 1

C.S.M. NO. 5100

PARCEL 2

TAX KEY NO. 426-0112-000

TAX KEY NO. 426-0071-111

TAX KEY NO. 426-0071-111

C.S.M. NO. 3997

TAX KEY NO. 426-0112-000

PAR. 1

TAX KEY NO. 426-9958-110

TAX KEY NO. 426-9948-111

TAX KEY NO. 426-9958-110

TAX KEY NO. 426-9948-111

PORTIONS OF PUBLIC STREETS PROPOSED TO BE VACATED

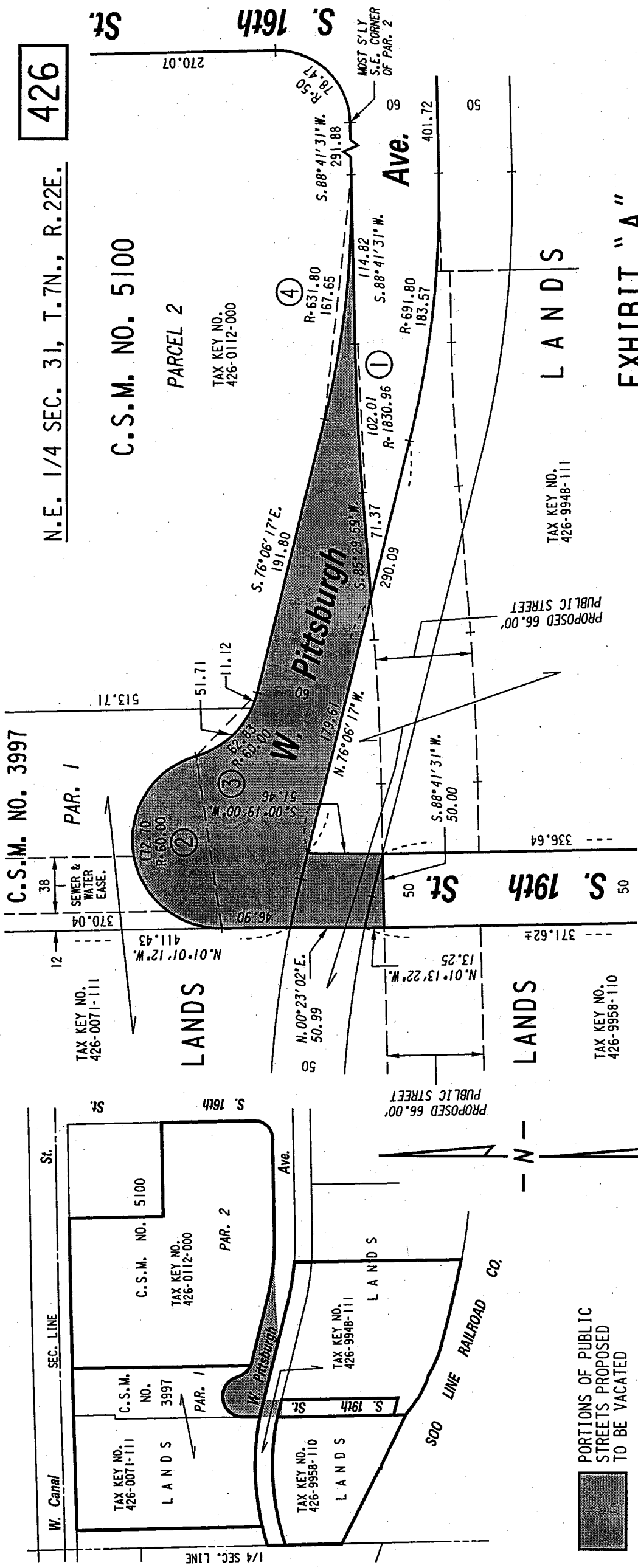


EXHIBIT "A"

FILE NO. 020631

INFRASTRUCTURE SERVICES DIVISION

MILWAUKEE, WISCONSIN

ASSIGNED TO: W.E. FUCHS

CH'K'D. BY: M.C. WILLIAMS

DRAWN BY: W.E.F. DATE: NOV. 5, 2002

PROJECT/GRANT NO.: WK52337166 SCALE: 1" = 80'

APPROVED BY:

Marica Lindholm
CENTRAL DRAFTING & RECORDS MANAGER

John Williams
CIVIL ENGINEER

- ① R- 1830.96'
A- 102.01'
C- 102.00'
I 4- 3°11'32"
D 4- 1°35'46"
C.B.- S.87°05'45" W.
- ② R- 60.00'
A- 172.70'
C- 118.96'
I 4- 164°54'55"
D 4- 82°27'27.5"
C.B.- N.81°26'15"E.
- ③ R- 60.00'
A- 62.83'
C- 60.00'
I 4- 60°00'00"
D 4- 30°00'00"
C.B.- S.46°06'17"E.
- ④ R- 631.80'
A- 167.65'
C- 167.16'
I 4- 15°12'12"
D 4- 7°36'06"
C.B.- S.83°42'23"E.