
Communication Relating to the Status of Current and Future Operations

February 18, 2021

Public Works Committee

Common Council File #191930

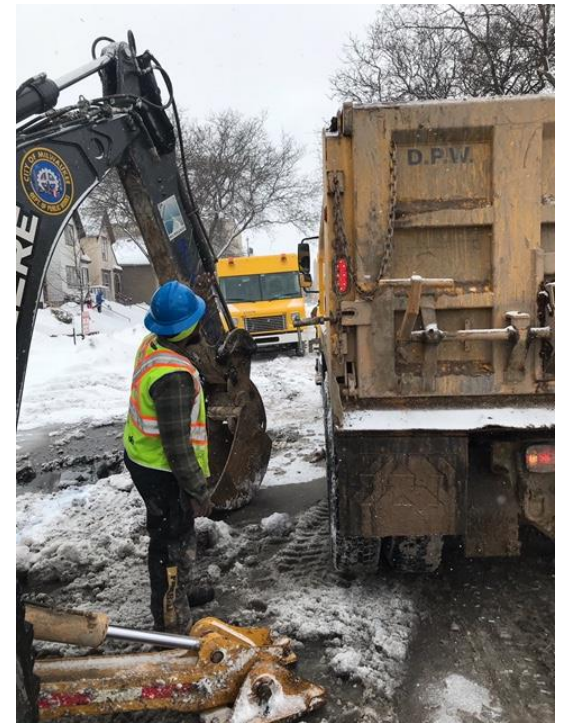
Sever Weather Response - February 2021

Main Breaks

- 60 main breaks; average 4-6/day between February 1 – 16, 2021
- February 2020 = 40
- February 5-Year Average = 55; February 10-year Average = 80
- February 2014 = 234, the highest recorded

Other emergency response

- 73 branch or service line leaks
- 92 frozen/burst meters replacements
- 13 frozen services



Milwaukee
Water Works

Severe Weather Response

Distribution Operations:

- ~120 employees – all hands on deck
- Six crews on 2nd shift scheduled
- Four crews on 3rd shift on-call
- Additional Water Utility Investigators on-call



Milwaukee
Water Works

Severe Weather Response

Meter Services:

- Four thawing crews scheduled daily
- 2nd and 3rd shift on-call crew and supervisor for emergencies
- Support Distribution workforce - Four technicians currently reporting

- Plants Operations

- Maintaining reduced operating pressure
- Increased monitoring of facilities
- Increased operational monitoring and adjustments
- Resiliency and redundancy



Employee Appreciation

“Great job in terrible conditions by the Water Works crew repairing a main leak.”

- Resident affected by 8” main break

“Thank you to @cityofmilwaukee workers for fixing the water main break in these freezing temps . . . You are real heroes and we [heart] you!”

- Business affected by 6” main break

Severe Weather Precautions



Winter in Milwaukee

<https://city.milwaukee.gov/water/News/Winter-in-Milwaukee>



CITY OF MILWAUKEE SNOW AND ICE CONTROL OPERATIONS

DPW OPERATIONS
FLEET FORESTRY PARKING SANITATION

2/18/2021

Snow Events Timeline 2020/2021

OPERATION	INCHES	MIN TEMP	STARTING	ENDING
ANTI ICING 7		15	12/28	12/29
PLOW 1	7.4	18	12/29	1/1/2021
GIC 3 & 4	.2	18	1/1/2021	1/4/2021
BRIDGE RUN 2		24	1/10/2021	
GIC 5	.3	20	1/11/2021	
ANTI ICING 8		24	1/12/2021	
GIC 6	trace	29	1/14/2021	
GIC 7	1.5	34	1/16/2021	
GIC 8	.3	27	1/17/2021	
GIC 9	1.1	19	1/19/2021	
GIC 10	1.8	18	1/24/2021	
PLOW 2	5.9	9	1/25/2021	1/29/2021
PLOW 3	9.1	18	1/30/2021	2/4/2021
GIC 11	1.7	25	2/4/2021	2/6/2021
BRIDGE RUN 3		0	2/8/2021	
GIC 12	trace	0	2/8/2021	
GIC 13	1.8	3	2/11/2021	2/12/2021
GIC 14	2.2	-6	2/13/2021	2/14/2021
PLOW 4	9.6	-4	2/15/2021	2/17/2021

42.9"

DECEMBER							JANUARY							FEBRUARY						
S	M	T	W	T	F	S	S	M	T	W	T	F	S	S	M	T	W	T	F	S
		1	2	3	4	5						1	2		1	2	3	4	5	6
6	7	8	9	10	11	12	3	4	5	6	7	8	9	7	8	9	10	11	12	13
13	14	15	16	17	18	19	10	11	12	13	14	15	16	14	15	16	17	18	19	20
20	21	22	23	24	25	26	17	18	19	20	21	22	23	21	22	23	24	25	26	27
27	28	29	30	31			24	25	26	27	28	29	30	28						
							31													

City of Milwaukee
 96 square miles
 1,472 miles of street
 7,000 lane miles

*Data from National Weather Service – Snow totals measured from Mitchel International Airport



2020/2021 Winter Challenges/Strategies

Challenges

- Above average snow fall
 - 44" so far (49.4" season average)
 - 42.9" since Dec 28th
- Arctic cold temperatures
 - Causes snow to freeze and adhere to streets quicker
- Back to back snowfall
 - Cleanup operations impacted
 - Other services for residents impacted
 - Equipment impacted
 - Staff impacted

Strategies

- Added 6 Pickup trucks w/ 7' plows (less durable)
 - Narrow streets
 - Hills
 - **Purchase additional units**
- Reconfigured end loader routes city-wide
 - Cul du sacs, dead ends and cross overs
- **Build Parking Compliance**
- **Build more private contractor relationships**

General Service Levels

Street Type	General Ice Control (salting)	Plowing 4-8" snow	Plowing 8"+ snow	Expected Result
Main Streets	3-4 hours	6-12 hours after snow stops	12-24 hours after snow stops	Bare pavement in driving and turn lanes
Residential Streets	6-8 hours	18-24 hours after snow stops	24-48 hours after snow stops	Drivable at slower speeds, packed snow cover expected
Alternate side Parking		24-48 hours after plowing	24-48 hours after plowing	Clear snow to open lanes
Sidewalks, corners, crosswalks		Begins 2-3 days after plowing completed	Begins 2-3 days after plowing completed	Clear snow, open walk path
Bus Stops		Scheduled during overnight hours 1-3 days after plowing completed	Scheduled during overnight hours 1-3 days after plowing completed	Clear snow, create access and clear from curb to bus entry/exit

Expect delays to all service levels due to pandemic protocols and staffing impacts

More Information...

DPW Snow Information Website
www.Milwaukee.gov/snow

Sign up for **Winter Parking Text Alerts** at
milwaukeeparkingalerts.com

Follow DPW on Facebook and
Twitter – both [@milwaukeepw](https://www.facebook.com/milwaukeepw)

Join Next Door to receive DPW
updates (City residents only)

