

N.W. 8-7-22
ATLAS P. 272

W. ABERT

Vol. 36 Page 53
ABERT HEIGHTS No 2

272

272-26

PL.



3792	183 272-0058	14	20	2437 1	272-0045	3793
3786	-0057	13	19	2437 2	-0046	3787
3782 3780	-0056	12	18	2437 3	-0047	3783
3778 3776	-0055	11	17	2437 4	-0048	3777
3772 3770	-0054	10	16	2437 5	-0049	3773 3771
3766 3764	-0053	9	15	2437 6	-0050	3767
3760	272-0052	8	14	2437 7	272-0051	3761
3754	272-0552	29	20	2437 1	272-0529	3755
3750	-0551	28	19	2437 2	-0530	3751
3746	-0550	27	18	2437 3	-0531	3745
3740 3740	-0549	26	17	2437 4	-0532	3741
3734	-0548	24	15	2437 5	-0533	3735
3732	-0547	23	14	2437 6	-0534	3731
3728	-0546	22	13	2437 7	-0535	3723
3722	-0545	21	12	2437 8	-0536	3721
3718	272-0544	20	11	2437 9	272-0537	

N. 10TH ST.

N. 9TH ST.
16.16 Feet
Cont. of Williamsburg Hts.

19	18	17	16	15	14	13	12	11
272-0543	-0542	-0541	-0540	-0539	-0538	-0537	272-0536	272-0535

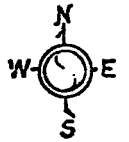
MICROFILMED

932 926 924 918 912 906 902
W. NASH ST.

S.E. 7-7-22
ATLAS P. 284

204
(R. P. HOUGHTON'S)
SUBD. INTO 1 & 5 ACRE LOTS

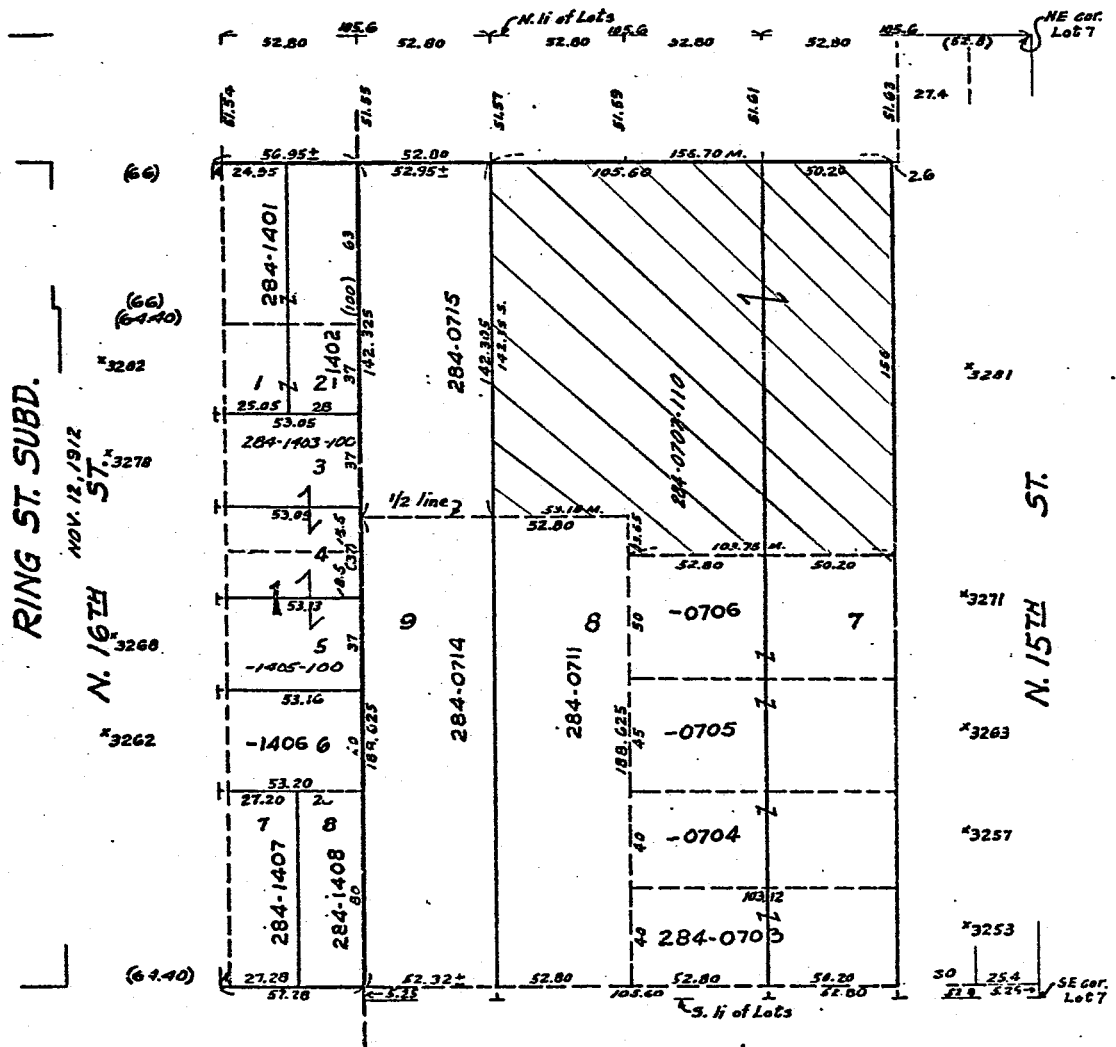
284-13
Scale 1 in. = 50 ft.



W. CONCORDIA

AVE.

*1531 *1523 *1517



RING ST. SUBD.

NOV. 12, 1912

N. 16TH ST.

N. 16TH ST.

N. 15TH ST.

*1532 *1528 1524 1518
W. RING

ST.

2-9-77

W. BURLING ST.

W. HOPKINS



ST.

ST.

ST.

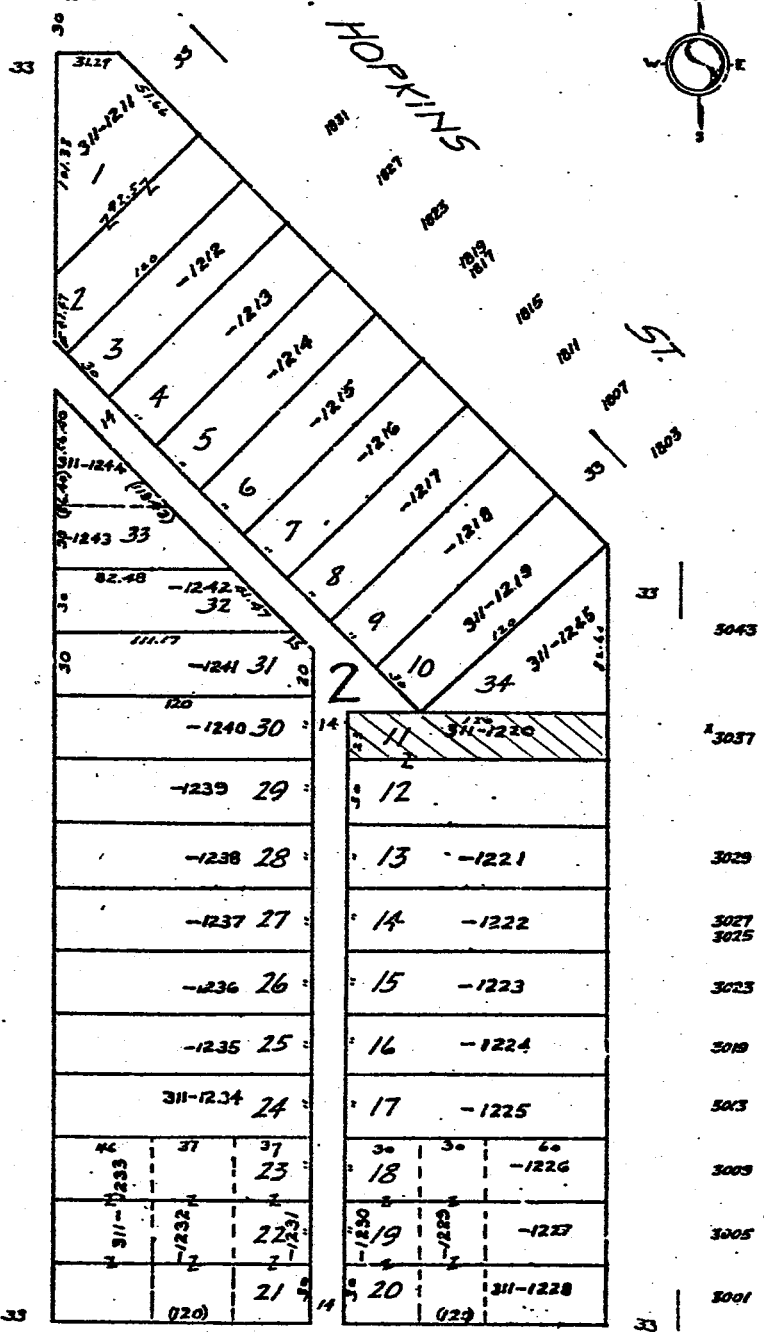
N 19TH

N 18TH

MICROFILMED 10-28-69

W. CHAMBERS

ST.



W. MITCHELL 460 ST.
1815 1811 1805 1801
1813



1700 1704	120	460-1749	50	120	
ST. 1708	-13	-1748	47.55 91.55 97.55	14	1750-100-9
1714	-1747		50 40 50 50	15	-1755
1720	-1746		7		-1756
1724	-1745		17	16	
1726	-1744		10	17	-1757
1734	-1743		7		-1758
1738	460-1742-100-X		9	18	63.5 -1759 56.5
1744	460-1740-100-9		8	19	-1760 23.8 26.2
1748	-1739		153		-1761
1750	-1738		7	20	-1762
1802	-1737		6	21	-1763
1808	-1736		5	22	-1764
1812	-1735				
1816	-1734		4	23	-1765
1818	-1733				-1767-100-6
1822	-1732		3	24	-1769
1824	-1731				-1770
1828	-1730		2	25	-1771
1832	-1729				-1772
1836	60 60	-1728 -1727	50	26	-1773
	120		46.50 1.5		460-1774 120

S. 19TH

S. 18TH

1715
1719
1721
*1729
*1731-3
*1735
*1737
*1739
1741
1745
1747
1751
1803
1811
1817
1823
1825
1829
1833
1837
1839

10

N.W. 7-7-22
ATLAS P. 270

270

270-03

SPENCE'S SUBD. NO 1

W. VIENNA AVE.
2033-334 2023



3748

3744

3740

3738

3732
3730

3726

3720

3716

ST

N. 21ST

65	(124)	55	32
270-1427-100		270-1427-200	31
270-1427-100		270-1427-200	30
-1426			29
-1425			28
-1424			27
-1423			26
-1422			24
-1421			23
-1420			22
270-1419			21
			20
270-1418 F 1809A	1417 F 1809	270-1416	19
			18
			17

1	270-1401
2	
3	-1402
4	-1403
5	
6	-1405
7	-1406
8	-1407
9	-1408
10	-1409
11	
12	-1411
13	-1412
14	-1413
15	-1414
16	270-1415

3763
3761

3755

3749

3745

3739
3737

3733

3731

3725

3719

3713

3711

3707

3703
3701

ST

N. 20TH

2030 2026 2024

W. NASH ST.

MAR 31 1982

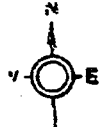
MICROFILMED

8
S.W. 7-7-22
ATLAS R 285

285
W. CONCORDIA AVE.

285-28

2465



ST.

3292	285-0337	20	1	285-0319	3293
3290	-0336	19	2	-0320	
3288			3	-0321	3285
3286	-0335	18	4	-0322	3281
3284	-0334	17	5	-0323	3277
3280		16	6	-0324	3273
3274	-0333	15	7	-0325	3269
3268	-0332	14	8	-0326	3265 3265A
3264	-0331	13	9	-0327	3261
3260	-0330	12	10	285-0328	3257
3256A 3256	285-0329	11			
3250	285-0747	28		285-0726	3253 3251
3244	-0746	27	3	-0727	3247 3245
3240	-0745	26	4	-0728	3243
3236	-0744	25	5	-0729	3239 3237
3234	-0743	24	6		3231
3230	-0742	23	7	-0730	
3224	-0741	22	8	-0731	3227 3225
3222	-0740	21	9	285-0732	
3218	285-0739	20	10		3221

PL.
CONCORDIA HEIGHTS
VOL. 11 PAGE 17

N. 24TH
GRAND VIEW
VOL. 15 PAGE 47

MICROFILMED
4-20-84

19	18	17	16	15	14	13	12	11
285-0738	-0737	-0736	-0735	-0734	285-0733			

2482 2478 2472 2468 2464
W. AUER AVE.

SW 07-7-22

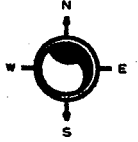
ATLAS P. 285

285

285-35

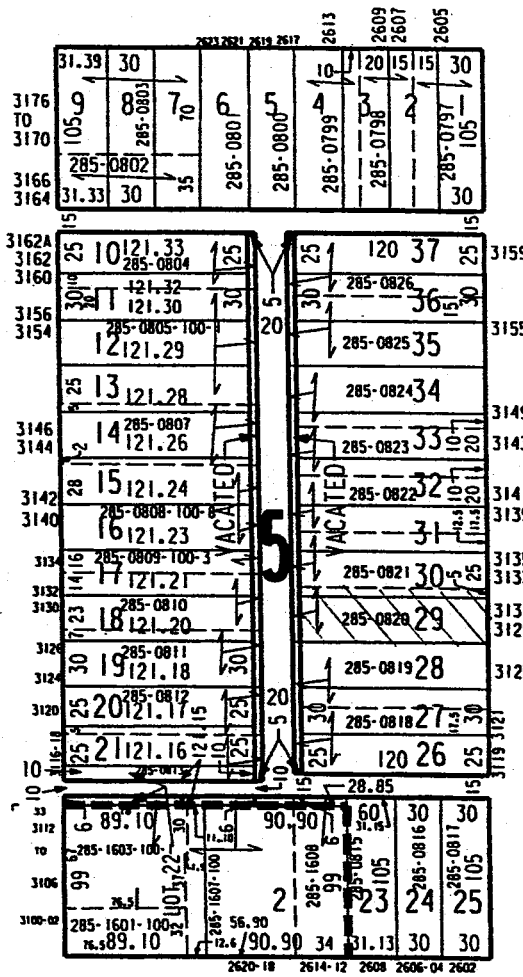
SCALE 1" = 80'

GRAND VIEW
W AUER AV



N 27TH ST

N 26TH ST



W BURLEIGH ST
PEASE'S
SUBDIVISION

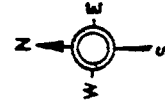
NW 24-7-21
ATLAS PAGE 348

348

348-15

MANUFACTURING PLAT-STATE

CLEVELAND HEIGHTS



N. 37TH

1853 1849 1845

ST.

LANDS

AVE.

3701-07

3711

TO

3729

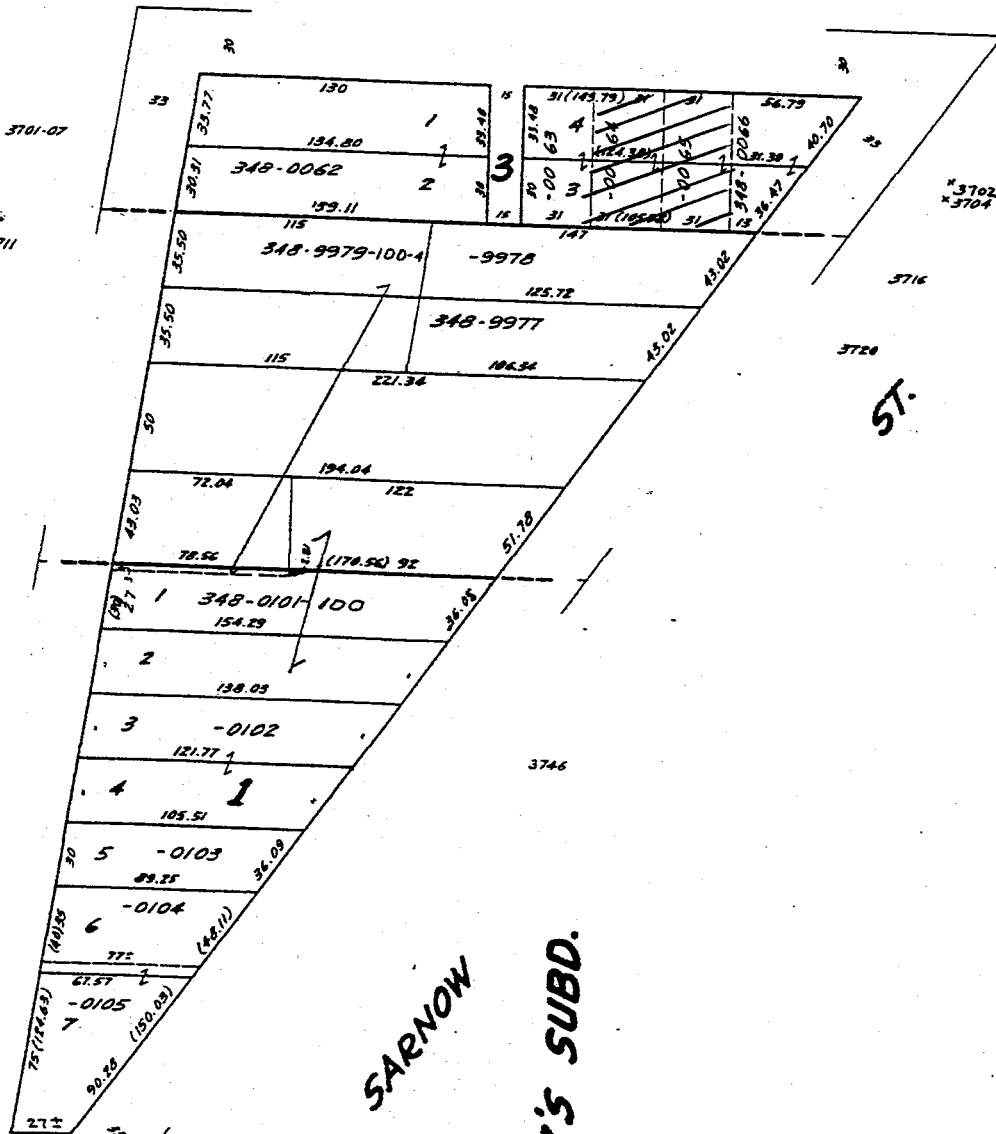
* 3733

W. LISBON

3803-05

3809

W. 3817



* 3702

* 3704

3716

3728

ST.

3746

W. SARNOW

DIETZ'S SUBD.

N. 39TH ST.

N.E. 14-7-21
ATLAS # 307

307

307-23

Harrison Park
W. Chambers St.



2976-8	125 307-0469 30	20	126 1 307-0440	2977-9
St 2972-4	-0468 29		2 -0441	2975-5 St
2966-6	-0467 28		3 -0442	2969
2960-2	-0466 27		4 -0443	2963-5
2958-4A	-0465 26		5 -0444	2959
2950-2	-0464 25		6 -0445	2953
2944	-0463 24		7 -0446	2945-7
2940-2	-0462 23	10	8 -0447	2941-3
2934-6	-0461 22		9 -0448	2935-7
2928-30	-0460 21		10 -0449	2931 2929
2924-6	-0459 20		11 -0450	2925
2918-20	-0458 19		12 -0451	2919
N 49th 2912-4	-0457 18		13 -0452	2915-5 N 48th
2908-10	-0456 17		14 -0453	2909-11
2902	307-0455 16		15 307-0454	2903-3
	125	20	126	

W. Locust

St.

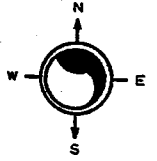
MICROFILMED 9-25-82

SW 16-7-22
ATLAS P. 321

321

321-22
SCALE 1" = 80'

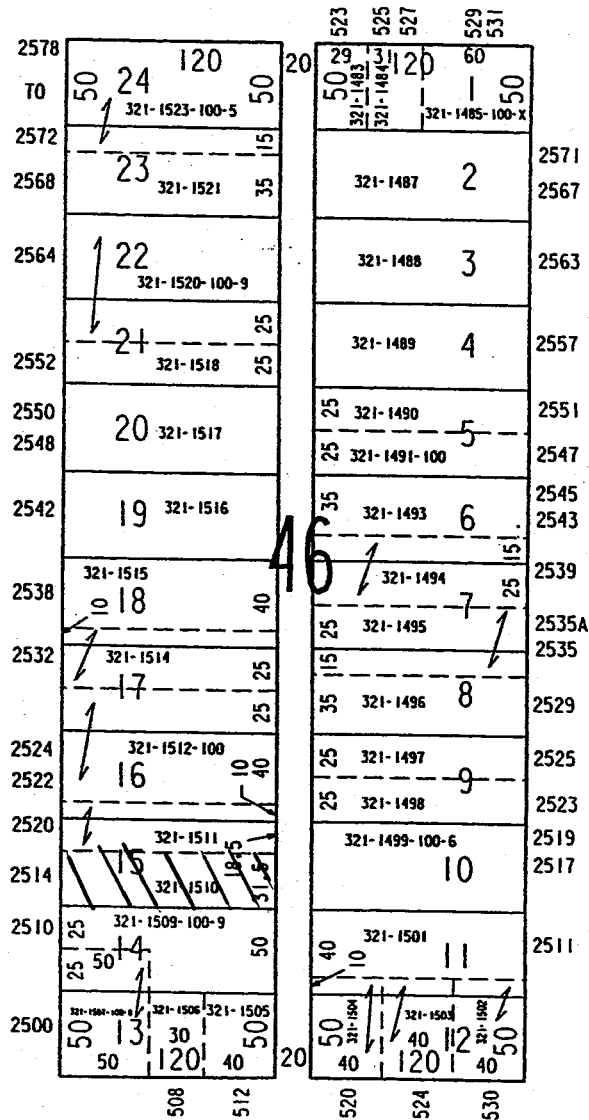
J. L. PIERCE'S SUBDIVISION
OF LOTS 47 - 55



E CLARKE ST

N HOLTON ST

N BOOTH ST



E WRIGHT ST

19
N.W. 16-7-22
ATLAS P. 314

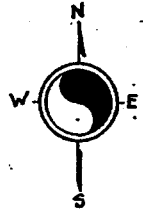
314

314-25

Wechselberg & Thornton's Subd.

E. Burleigh St.

401-3 409-11 417-5 423 425 429



ST.

ST.

110	-1147	-1148	-1149	-1150	-1151	-1152	-1153	110
25	26	27	28	29	30	31	32	33
25	30		15	15			25	25

3060	120 -1146	24	20	34	120 -1154	3063
3056	-1145	23	20	35	-1155	3057
3052	-1144	22	20	36	-1156	3053
3050	-1143	21	20	37	-1157	3049
3046	-1142	20	20	38	-1158	3045
3042	314-1141	19	20	39	314-1159	3043
3036A-RCAR 3036	24	23	20	1	314-0633	3057
	314-0652	-0651	23	2		
3030	-0650	22	20	3	-0634	3033
3026 3024	-0649	21	20	4	-0635	3029 3027
3020	-0648	19	20	5	-0636	3025 3021
		18	20	6	-0637	3019
3014 3014B	-0647	17	20	7	-0638	3015
	-0646	16	20	8	-0639	3011
3008 3006A 3006	-0645	15	20	9	-0640	
		14	20	10	-0641	
3002	-0643	13	20	11	-110-1	
			20	12	-120-9	

63

N. BUFFUM

N. HOLTON

E. Chambers
Paine & Stacy's Subd. St.

412-4 418-20 426 430 432

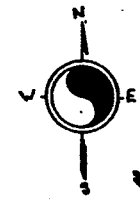
MEASURED BY 87

NE & NW 17-7-22
 ATLAS PAGE 312 & 313

PREFIX 312 ← PREFIX 313
 W. CHAMBERS ST.

312-02

517 509 503



JOI'S J. SAM RINDSKOPF'S & CHAS HARPKE'S SUBD.

ST. 6TH N.

2978
2976
*2972A
*2972
*2968
*2966
2962
2960
2958
2952
2950
2946
2940
2938
2928
2924
2922
2914
2912
2908
2904
2902
2900

150 312-1701	1	30	4 47.333	4 100	313-2129	2967 2965
-1702	2	2	3	65-2120-100	313-2128	
-1703	3	20.5	2	35	44.50	
-1704	4	20	2	40.0	-2125	
-1705	5	2	1	41.333	313-2124	*2961
-1706	6	2	5	37.5	313-2023	2957 2955
-1707	7	2	6	37.5	-2024	2951
-1708	8	2	7	37.5	-2025	2945
-1709	9	2	8	37.5	-2026	2941
-1710-100	10	2	9	37.5	-2027	2935
-1713	11	2	10	37.5	313-2028	2931
-1714	12	2	11	37.5		
-1715-100-X	13	2	12	37.5	313-0118	2925
-1717	14	2	13	37.5	-0119	2923
-1720	15	2	14	37.5	-0120	2919
-1721	16	2	15	37.5	-0121	2915
312-1722	17	2	16	37.5	-0122	2911
	18	2	17	37.5	-0123	2907
	19	2	18	37.5	313-0124	2903 2901
	20	2	18	37.5		

ST. 5TH N. SUBD. OF LOT 'M' SUBD. OF LOT 'N' ASSESSMENT SUBD NO. 28

12
SE.17-7-22
ATLAS P. 312

322

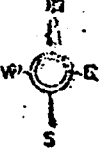
322-01

J.B.A. KERNS SUBD. N°2

E. Center

St.

NE COR. 1/4 SEC



St.

St.

N. Hubbard

N. Richard

2678	20	20	87.45	140	11	100	35
			89	39	2		
			83	38	3		
			87	37	4	22-0431	
			62	36	5		
			66	35	6		
			70	34	7		
			74	33	8		
			78	32	9		
			83				
2672			322-0447	31	10	-0432	2671
2670			87	21	5		2679
2638			-0446	30	11	-0433	2637
2636			31	29	12		2635
2632			-0448	29	12		2631
2630			93	28	13	-0434	2625
2628			-0444	27	14	-0435	2623
			87.99	26	15	-0436	2621
			82.04	25	16	-0437	2617
2620			-0443	24	17	-0438	2615
2616			12.4	23	18	-0439	2613
			16	22	19	-0440	2611
			25	21	20	-0440	2607
	20	20	82.27			100	2605
							2603

MICROFILMED 11-3-75

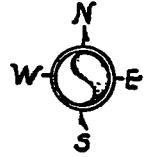
E. Clarke

St.

N.W.-7-7-22
ATLAS P. 270

270
ZINGEN & BRAUN'S GARDEN SUBD.

270-21



W. VIENNA

*2427A *2423 *2419
*2427

AVE.

*3760	173.28 270-1530	26	1	173.28 270-1501
PL. 3758	120	25	2	120
	-1629	24	3	-1502
*3750	-1528	23	4	-1503
*3746	-1627	22	5	120
*3742	-1526	21	6	-1506
*3738	-1525	20	7	-1507
*3732	-1524	19	8	-1508
*3726	-1523	18	9	-1509
*3722	-1522	17	10	-1510
*3716	-1521	16	11	-1511
N. 24 TH ST. 3712	-1520	15	12	-1512
3706A 3708	-1519	14	13	-1513
*3702 *3700	120 270-1518 173.28	13	14	120 270-1514 173.28

W. NASH

*2426 *2418
*2420

ST.

MICROFILMED 2-22-53

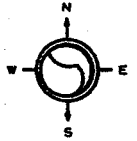
SW 19-7-22

ATLAS P. 364

364

364-40

SCALE 1" = 80'

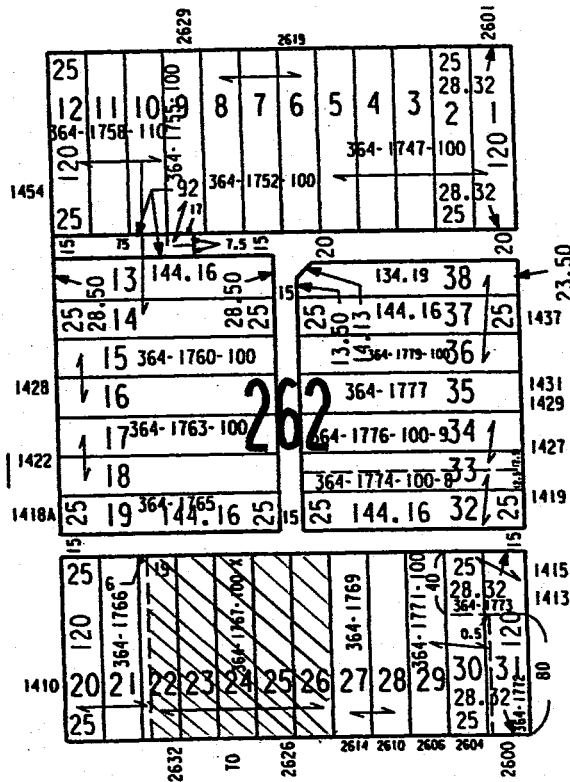


A. K. MAYHEW'S ADD'N.

W CHERRY ST

N 27TH ST

N 26TH ST



W VLIET ST