

Certificate of Appropriateness

LIVING WITH HISTORY

Milwaukee Historic Preservation Commission/809 N. Broadway/PO Box 324/Milwaukee, WI 53201-0324/414-286-5712

Property

840 W. HISTORIC MITCHELL ST.

Description of work

Install new brick veneer over exposed concrete block on storefront. Install new black canvas awning, with no more than 10 square feet of signage, over storefront. Install new ceramic tile floor in vestibule. Coat concrete curb on storefront with epoxy.

Date issued

3/12/2010

PTS ID 62117 COA, brick veneer and awning

In accordance with the provisions of Section 308-81(9) of the Milwaukee Code of Ordinances, the Milwaukee Historic Preservation Commission has issued a certificate of appropriateness for the work listed above. The work was found to be consistent with preservation guidelines. The following conditions apply to this certificate of appropriateness:

All work will be done according to attached drawings. HPC staff must review and approve a sample panel of brickwork before general installation of the brick is commenced.

All work must be done in a craftsman-like manner, and must be completed within one year of the date this certificate was issued. Staff must approve any changes or additions to this certificate before work begins. Work that is not completed in accordance with this certificate may be subject to correction orders or citations. If you require technical assistance, please contact Paul Jakubovich of the Historic Preservation staff as follows: Phone: (414) 286-5712 Fax: (414) 286-0232 E-mail: pjakub@milwaukee.gov.

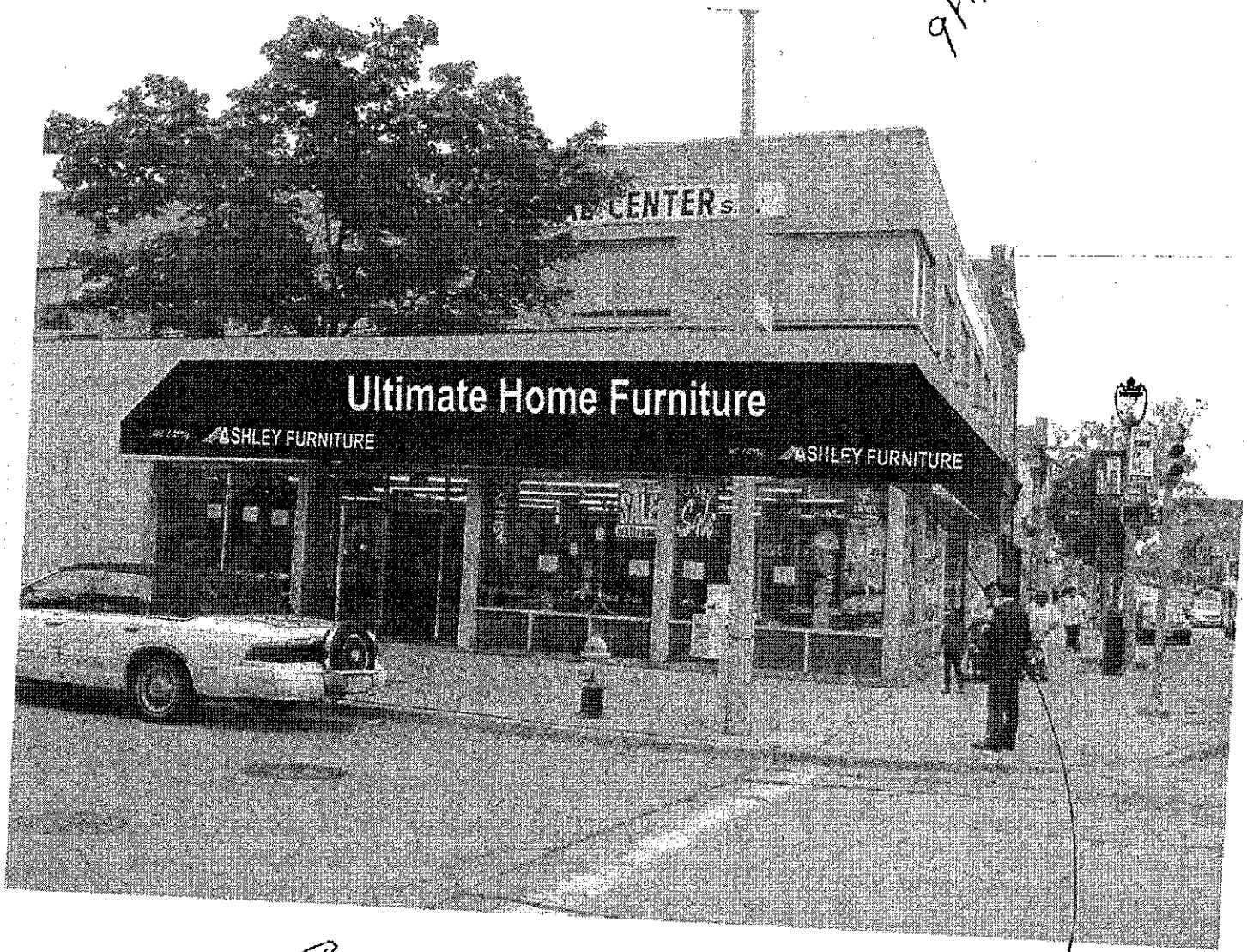
If permits are required, you are responsible for obtaining them from the Milwaukee Development Center. If you have questions about permit requirements, please consult the Development Center's web site, www.mkedcd.org/build, or call (414) 286-8278 or 8211.

Paul Jakubovich
City of Milwaukee Historic Preservation

Copies to: Development Center, Ald. Jim Witkowiak, Contractor Ron Nezeri, Inspector Dave Leonard (286-2560)

NAEGELE AWNING
DAN 517.4643

9th Street



Signage on Awning
must be no more
than 20 square feet
in size

NEW BRICK HERE



Orangeburg
warehouse

New York road