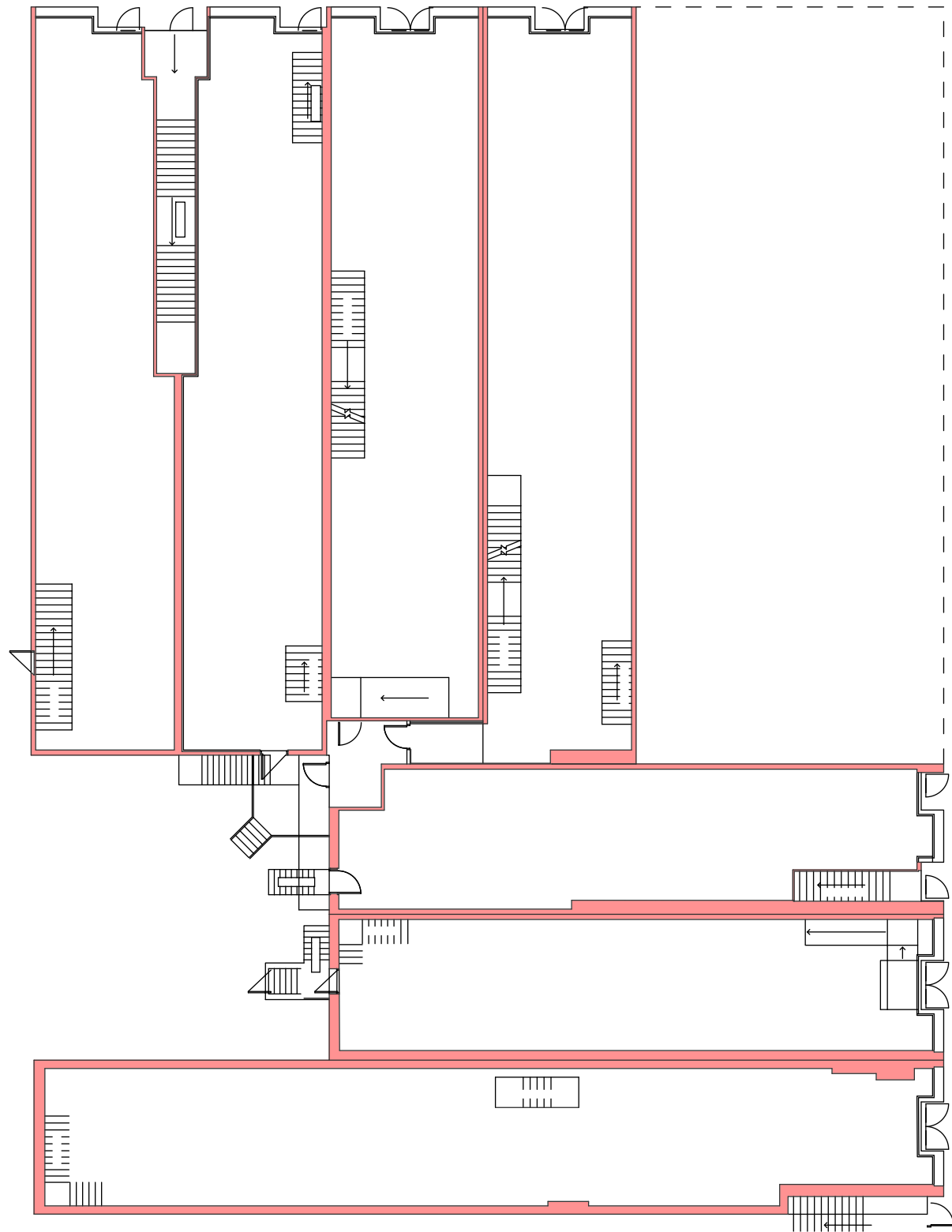


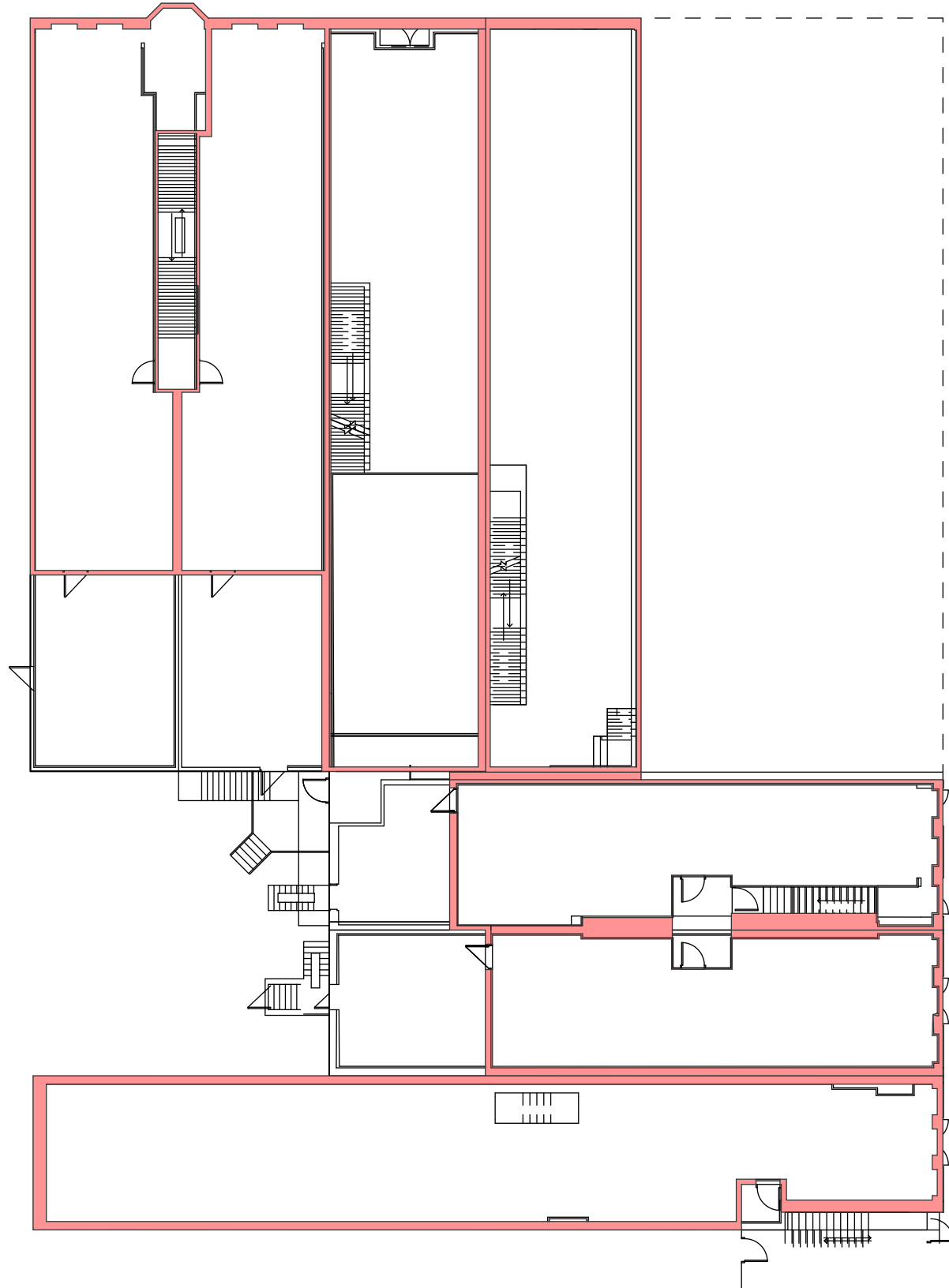
WISCONSIN AVE.



NORTH BROADWAY

1 FIRST FLOOR PLAN
 A12 Scale: 1"=20'-0"

WISCONSIN AVE.



NORTH BROADWAY

2 SECOND FLOOR PLAN
 A12 Scale: 1"=20'-0"



**UIHLEIN
 WILSON**
 ARCHITECTS

322 East Michigan Street
 Milwaukee, WI 53202

telephone | 414.271.8899
 facsimile | 414.271.8942
 email | office@uihleין-wilson.com

© UIHLEIN WILSON ARCHITECTS, INC. ALL RIGHTS RESERVED

OWNERSHIP OF DOCUMENTS
 This document, and the ideas and designs incorporated herein, as an instrument of professional service, is the sole property of Uihlein Wilson Architects, Inc., and is not to be used in whole or in part for any other project or purpose without the expressed written authorization of Uihlein Wilson Architects, Inc.

REVISIONS

| No. | Date | Description |
|-----|------|-------------|
|-----|------|-------------|

PROJECT

Broadway Facade
 Renovations
 Milwaukee, WI

SHEET

Floor Plans

DATE:

March 30, 2017

PROJECT NO.

13-103

A12



**UIHLEIN
WILSON**
ARCHITECTS

322 East Michigan Street
Milwaukee, WI 53202

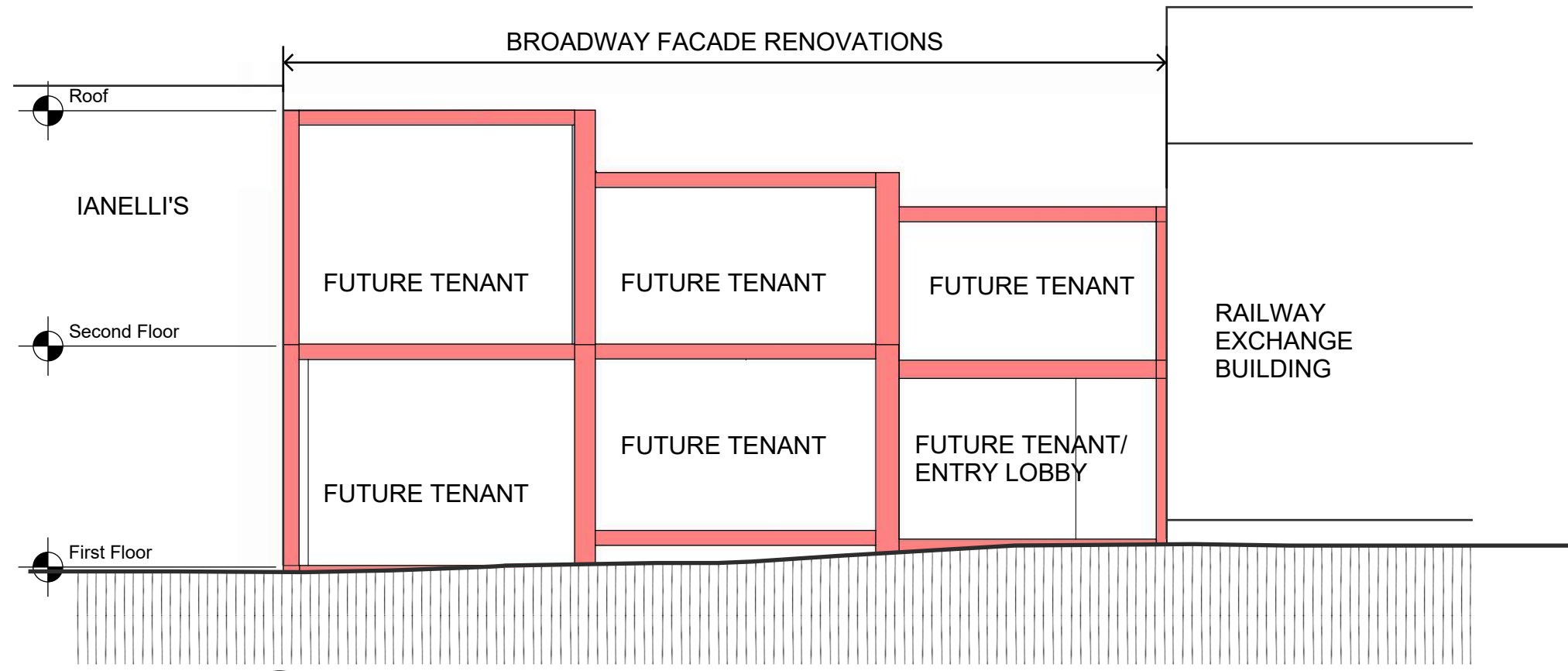
telephone | 414.271.8899
facsimile | 414.271.8942
email | office@uihleין-wilson.com

© UIHLEIN WILSON ARCHITECTS, INC. ALL RIGHTS RESERVED

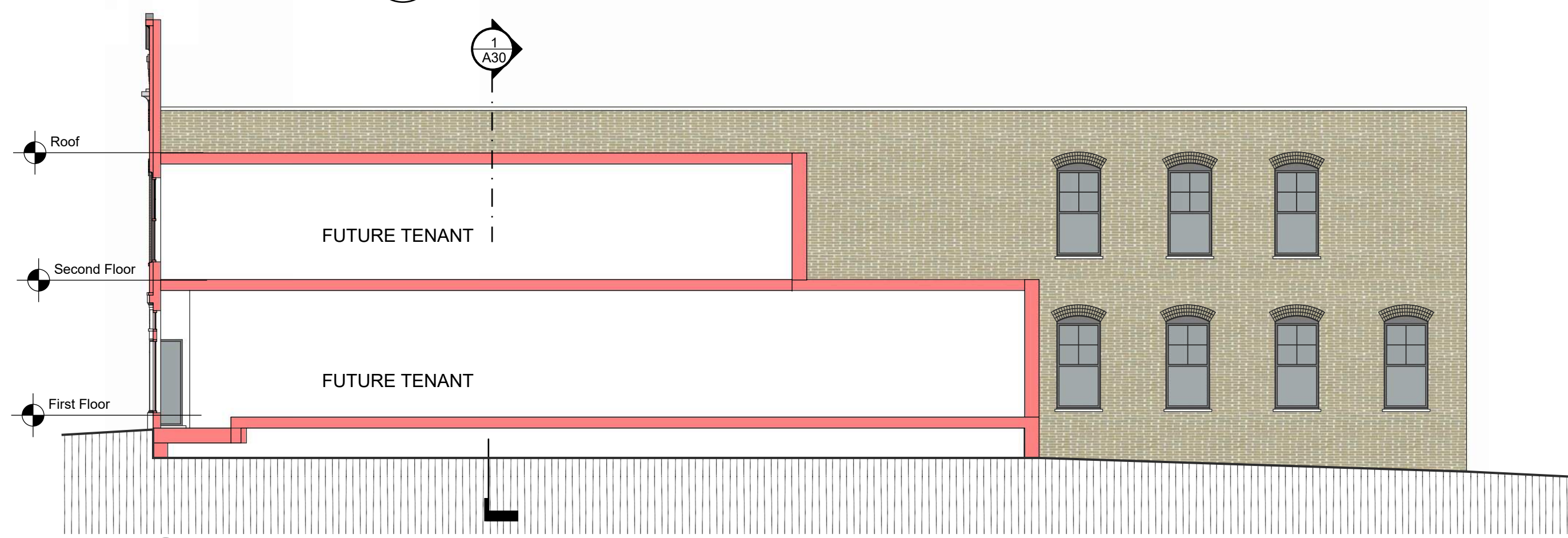
OWNERSHIP OF DOCUMENTS
This document, and the ideas and designs incorporated herein, as an instrument of professional service, is the sole property of Uihlein Wilson Architects, Inc., and is not to be used in whole or in part for any other project or purpose without the expressed written authorization of Uihlein Wilson Architects, Inc.

REVISIONS

| No. | Date | Description |
|-----|------|-------------|
|-----|------|-------------|



1 NORTH-SOUTH SECTION- FROM BROADWAY
A30 Scale: 1"=10'-0"



2 EAST-WEST SECTION FROM NORTH
A30 Scale: 1"=10'-0"

PROJECT

Broadway Facade
Renovations
Milwaukee, WI

SHEET

Building
Sections

DATE:

March 30, 2017

PROJECT NO.

13-103

A30