

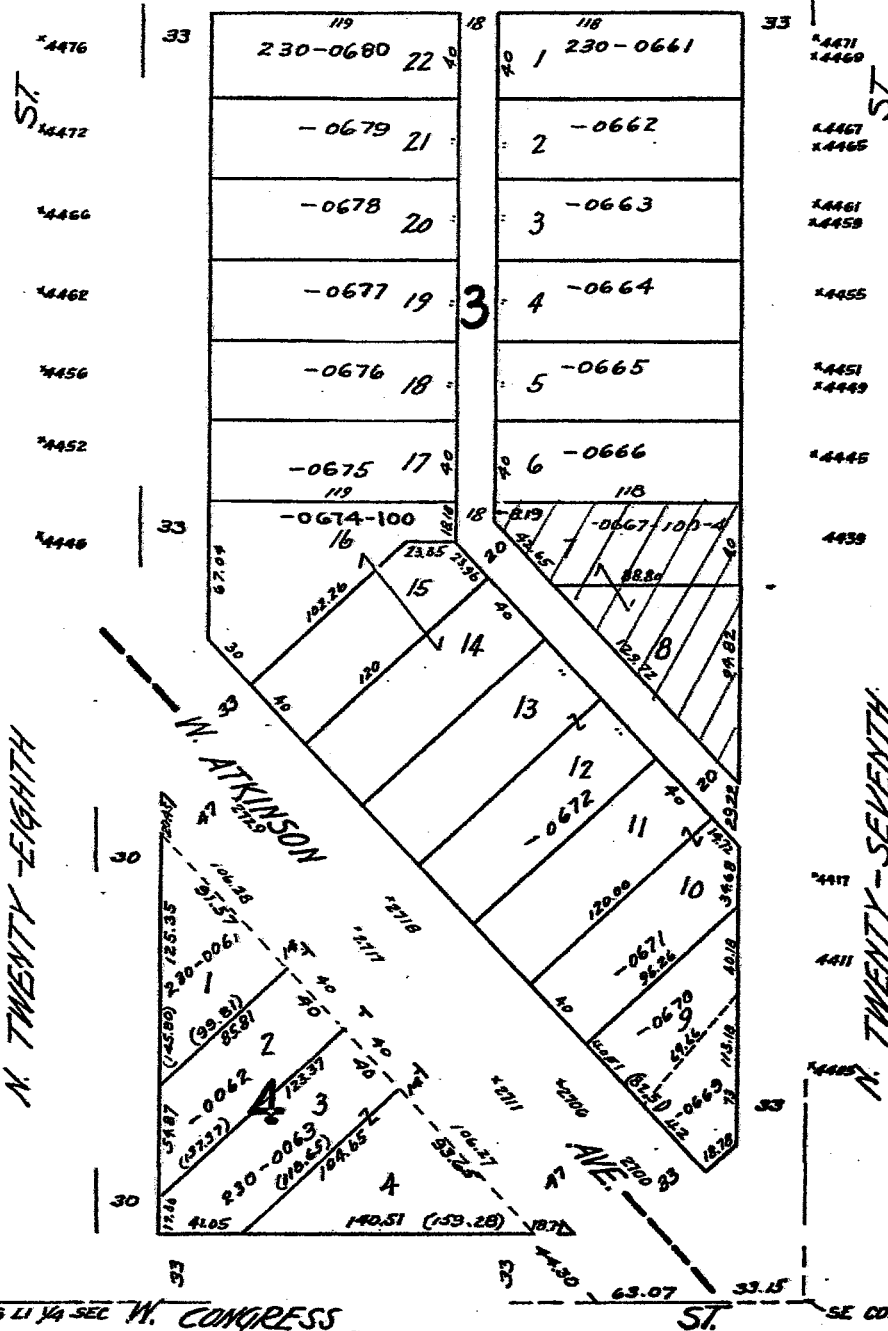
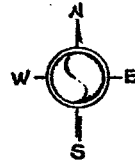
N.E. 1-7-21
ATLAS P. 230

230
NORVILLE

230-04

W. RUBY

AVE.



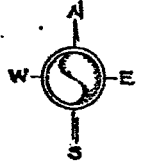
MICROFILMED 3-29-85

1/4 SEC W. CONGRESS ST.
CONT. OF ZINGEN & BRAUN'S NORVILLE

N.E. 1-7-21
ATLAS P. 236

230
NORVILLE
Vol. 38 Page 59
W. GLENDALE AVE
*2705-05A

230-0



	18.00	18	18.00	
4576	230-0630	30	2 / 230-0601	4574
4572	-0629	29	2 -0602	4572
4568	-0628	28	3 -0603	4568
4564	-0627	27	4 -0604	4564
4560	-0626	26	5 -0605	4559
4556	-0625	25	6 -0606	4557
4552	-0624	24	7 -0607	4553
4548	-0623	23	8 -0608	4549
4544	-0622	22	9 -0609	4541
4540	-0621	21	10 -0610	4537
4536	-0620	20	11 -0611	4531
4532	-0619	19	12 -0612	4525
4528	-0618	18	13 -0613	4519
4524	-0617	17	14 -0614	4515
4520	-0616	16	15-0615	4509
4516				4501

MICROFILMED 12-17-68

N. TWENTY-EIGHTH

N. TWENTY-SEVENTH

W. RUBY AVE.

2720