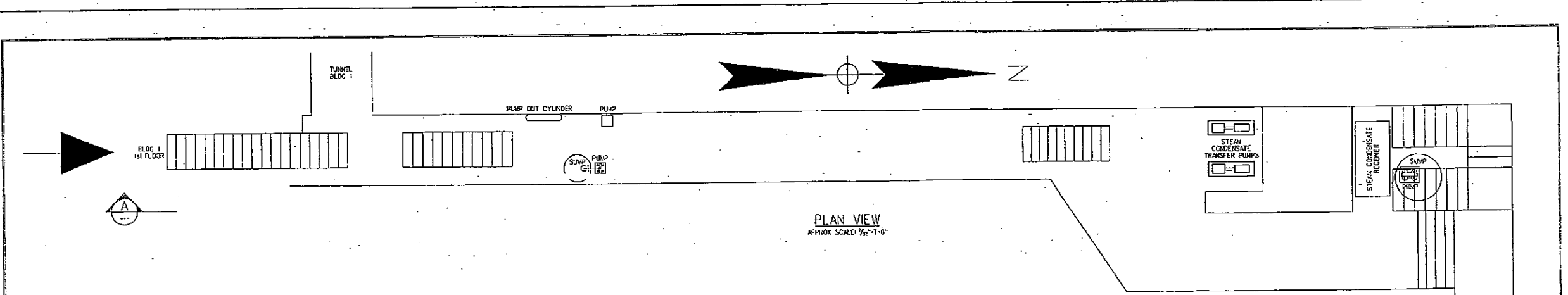


MILLER BREWING COMPANY  
MILWAUKEE PLANT  
FACILITY LAYOUT

SCALE  
0 100 200 300  
APPROXIMATE 1"=150'

DATE: JUNE 20, 1988

BUILDING LEGEND	
1A	ENGINE ROOM AND COOLER BLDG.
2	ENGINE ROOM ADDITION
3	ENGINE ROOM
4	ENGINE ROOM ANNEX
5	HOP STORAGE AND UTILITIES OFFICE
6	ENGINE ROOM ANNEX
7	BOILER HOUSE
8	CONDENSER BLDG.
9	PUMP AND TANK BLDG.
10	HOUSE - A
11	HOUSE - B
12	HOUSE - C
13	HOUSE - D
14	HOUSE - E
15	HOUSE - F
16	HOUSE - G
17	HOUSE - H
18	QUALITY ASSURANCE AND MAINTENANCE BLDG.
19	MAINTENANCE SHOP
20	MAINTENANCE SHOP AND OFFICES
21	HOUSE - I
22	HOUSE - J
23	HOUSE - K
24	HOUSE - L
25	HOUSE - M
26	HOUSE - N
27	HOUSE - O
28	HOUSE - P
29	HOUSE - Q
30	HOUSE - R
31	HOUSE - S
32	HOUSE - T
33	HOUSE - U
34	HOUSE - V
35	HOUSE - W
36	HOUSE - X
37	HOUSE - Y
38	HOUSE - Z
39	HOUSE - AA
40	HOUSE - AB
41	HOUSE - AC
42	HOUSE - AD
43	HOUSE - AE
44	HOUSE - AF
45	HOUSE - AG
46	HOUSE - AH
47	HOUSE - AI
48	HOUSE - AJ
49	HOUSE - AK
50	HOUSE - AL
51	HOUSE - AM
52	HOUSE - AN
53	HOUSE - AO
54	HOUSE - AP
55	HOUSE - AQ
56	HOUSE - AR
57	HOUSE - AS
58	HOUSE - AT
59	HOUSE - AU
60	HOUSE - AV
61	HOUSE - AW
62	HOUSE - AX
63	HOUSE - AY
64	HOUSE - AZ
65	HOUSE - BA
66	HOUSE - BB
67	HOUSE - BC
68	HOUSE - BD
69	HOUSE - BE
70	HOUSE - BF
71	HOUSE - BG
72	HOUSE - BH
73	HOUSE - BI
74	HOUSE - BJ



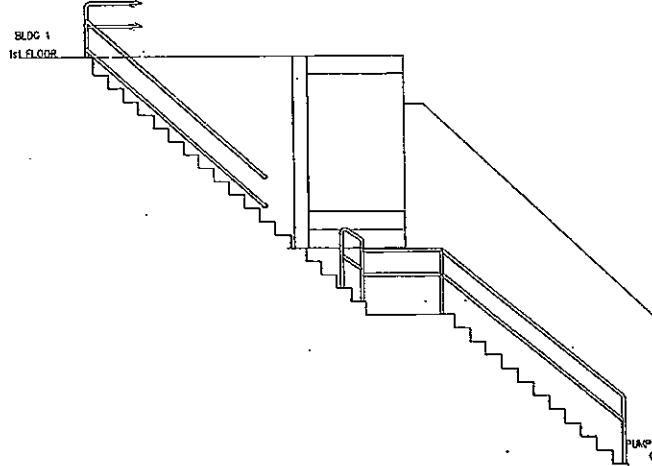
PLAN VIEW  
APPROX SCALE: 1/2"=1'-0"

THIS TUNNEL CONTAINS THE FOLLOWING UTILITIES AND PROCESSES

- |                                 |                                      |
|---------------------------------|--------------------------------------|
| 1" AMMONIA PUMP OUT             | 1" ELECTRICAL CONDUIT                |
| 1" HDSE                         | PLASTIC HOSE                         |
| 6" 170° HOT WATER               | 6" AMMONIA SUCTION 24 PSIG           |
| 1 5/32" COMPRESSED AIR          | 4" FROM STEAM CONDENSATE PUMPS       |
| 1 5/32" CARBON DIOXIDE          | 3" ELECTRICAL CONDUIT                |
| 1 5/32" INSTRUMENT AIR          | 3 1/2" ELECTRICAL CONDUIT            |
| 1" ELECTRICAL CONDUIT           | 12 LB STEAM                          |
| 2" ELECTRICAL CONDUIT           | 6" PROCESS PURIFIED WATER            |
| 2" ELECTRICAL CONDUIT           | 1" CARBON DIOXIDE                    |
| 1" AMMONIA PUMPOUT              | 3" ELECTRICAL CONDUIT 4000 VOLTS     |
| 1" AMMONIA SUCTION 24 PSIG      | 3" ELECTRICAL CONDUIT 4000 VOLTS     |
| 1" HOSE                         | 1" ELECTRICAL CONDUIT                |
| 1 5/32" AMMONIA LIQUID 185 PSIG | 3 1/2" ELECTRICAL CONDUIT            |
| 1 1/32" PIPE                    | 1" ELECTRICAL CONDUIT                |
| 115 LB STEAM                    | 1 5/32" PLASTIC LINE                 |
| 1" AMMONIA PUMP OUT             | 1 5/32" WIRE                         |
| 6" WORT COOLER WATER            | 3 1/2" ELECTRICAL CONDUIT            |
| 1" ELECTRICAL CONDUIT           | 3 1/2" ELECTRICAL CONDUIT            |
| 3" FROM SUMP PUMP               | AMMONIA LIQUID 185 PSIG              |
| ORIGINATES IN TUNNEL            | 1" STEAM CONDENSATE TO TANK          |
| 6" WORT COOLER WATER            | 1" STEAM CONDENSATE                  |
| 3" COMPRESSED AIR               | 1" STEAM CONDENSATE                  |
| FIBER OPTIC                     | 3 1/2" ELECTRICAL CONDUIT TERMINATES |
| FIBER OPTIC                     | IN TUNNEL                            |
| 3 1/2" ELECTRICAL CONDUIT       | 1" STEAM CONDENSATE                  |
| 12 LB STEAM LINE                | 1 5/32" LINE TERMINATES              |
| 1" PLASTIC LINE                 | IN BREWHOUSE                         |
| 3 1/2" ELECTRICAL CONDUIT       |                                      |

UTILITIES  
ENGINE ROOM  
BLDG 1

BLDG 33  
BREWHOUSE

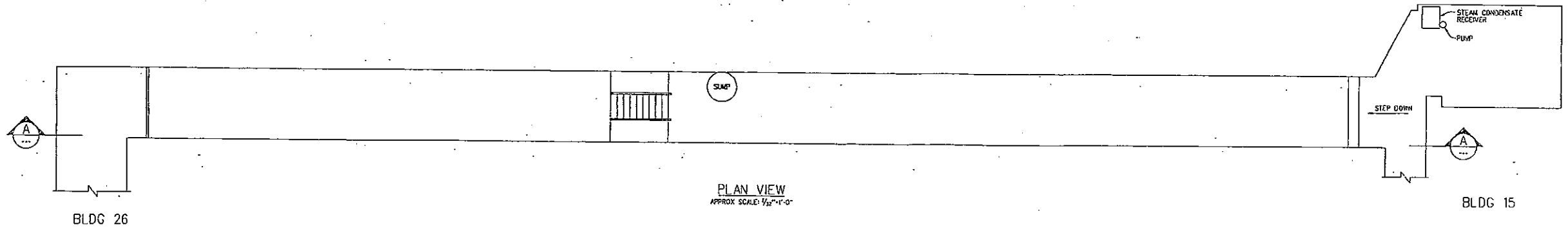
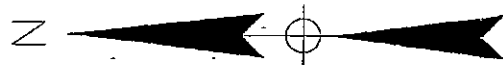


EAST ELEVATION LOOKING WEST

SECTION A  
APPROX SCALE: 1/2"=1'-0"

SP 369

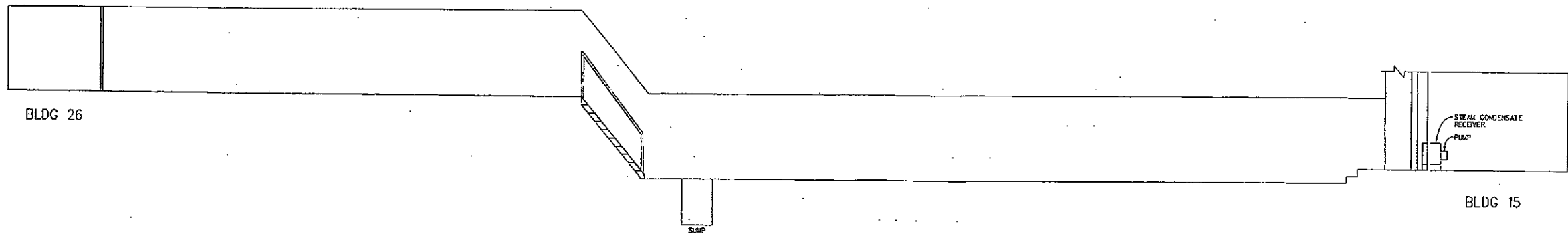
VERIFY SCALE BAR IS ONE INCH ON ORIGINAL DRAWING. 0 1" IF NOT ONE INCH ON THIS SHEET, ADJUST SCALES ACCORDINGLY	OSOR DR O.J.SCHUTTEN CRK APVO	NO. DATE REVISION BY APVO	<b>TRIAD</b> <b>ENGINEERING</b> <b>INCORPORATED</b> <small>© 1993 Triad Engineering</small>	325 East Chicago Street Milwaukee, Wisconsin 53202 (414)-291-8840 FAX 291-8841	<b>MILLER BREWING COMPANY</b> <b>MILWAUKEE PLANT</b> <b>TUNNEL CONNECTING BLDG 1 UTILITIES AND BLDG 33 BREWHOUSE</b>	SHEET NO. A DWG NO. 10726-0 DATE APRIL 1993 PROJ NO. 10726
---	--	---------------------------------	--	---	--	---



PLAN VIEW  
APPROX SCALE: 1/8"=1'-0"

THIS TUNNEL CONTAINS THE FOLLOWING UTILITIES AND PROCESSES

- |                          |                                  |
|--------------------------|----------------------------------|
| 2 1/32" STEAM CONDENSATE | 3/32" ELECTRICAL CONDUIT         |
| 4" LOOP 3 SUPPLY         | 3/32" ELECTRICAL CONDUIT         |
| 4" LOOP 1 RETURN         | 3" 4000V ELECTRICAL CONDUIT      |
| 4" LOOP 2 SUPPLY         | 1" ELECTRICAL CONDUIT            |
| 3/32" ELECTRICAL CONDUIT | 20" 12 LB STEAM                  |
| 3/32" ELECTRICAL CONDUIT | 4" LOOP 9                        |
| 6" LOOP 1 SUPPLY         | 1 1/32" DISCHARGE LINE FROM SUMP |

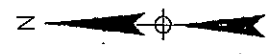
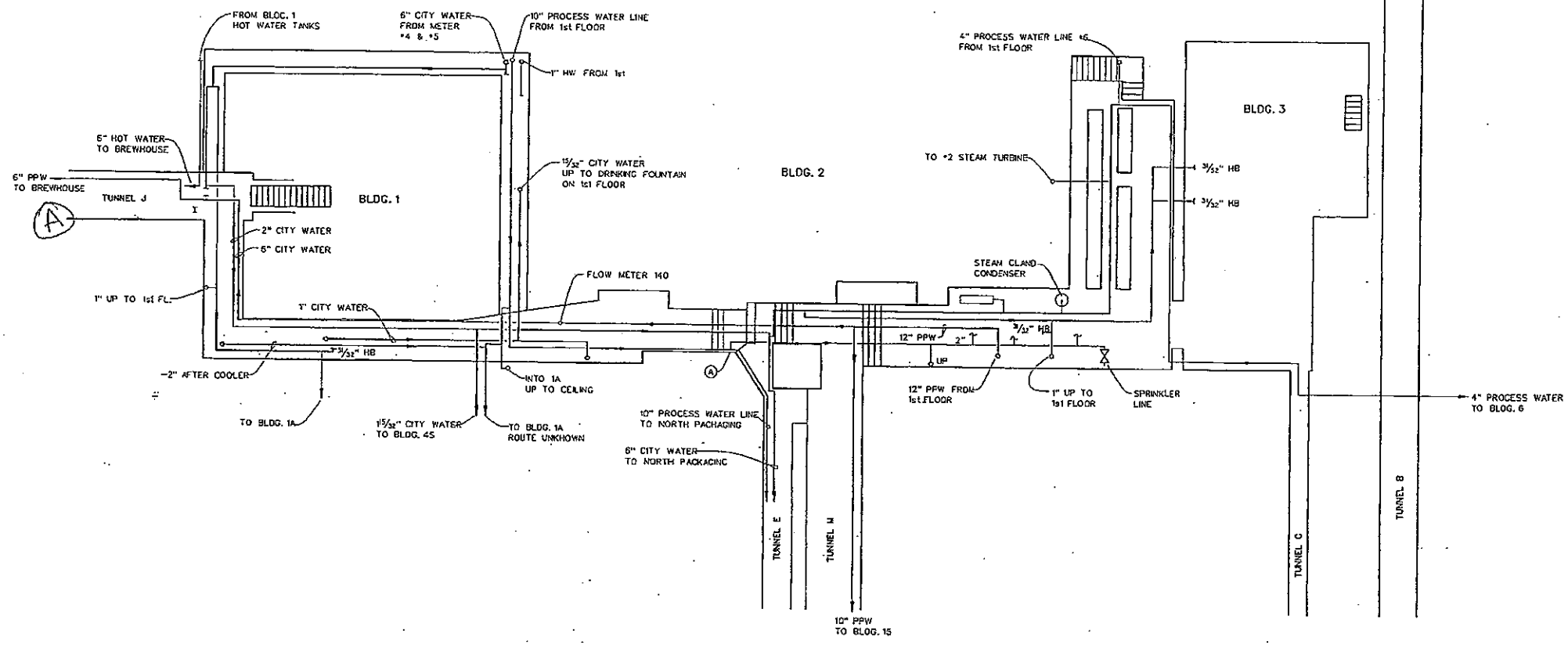


WEST ELEVATION LOOKING EAST

SECTION A  
APPROX SCALE: 1/8"=1'-0"

SP 428

VERIFY SCALE BAR IS ONE INCH ON ORIGINAL DRAWING. IF NOT ONE INCH ON THIS SHEET, ADJUST SCALES ACCORDINGLY	DSGN DR D.J.SCHUTTEN CHK APVD	NO. DATE REVISION	BY APVD	TRIAD ENGINEERING INCORPORATED 325 East Chicago Street Milwaukee, Wisconsin 53202 4141-291-8840 FAX 291-8841	MILLER BREWING COMPANY MILWAUKEE PLANT TUNNEL CONNECTING BLDG 15 AND BLDG 26	SHEET NO. 11018-0A DATE APRIL 1993 PROJ. NO. 11018
	(B)					



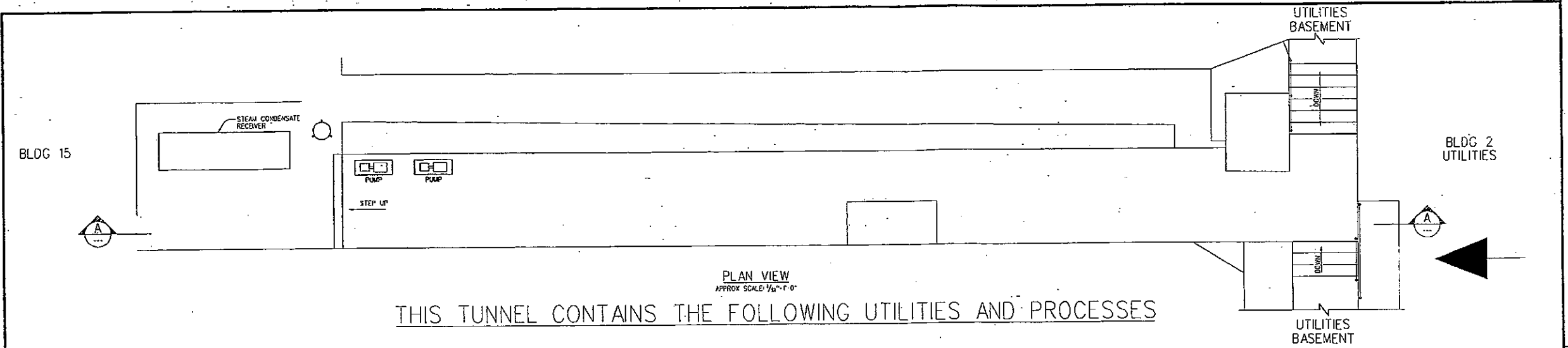
MILLER BREWING COMPANY  
 DWG. NO. CF-99.7-233-D

VERIFY SCALE	DSGN				
BAR IS ONE INCH ON ORIGINAL DRAWING.	DR	J. G. MENHOLZ			
IF NOT ONE INCH ON THIS SHEET, ADJUST SCALES ACCORDINGLY	CHK				
	APVD				
	NO.	DATE	REVISION	BY	APVD

**TE TRIAD**  
 ENGINEERING  
 INCORPORATED  
 325 East Chicago Street  
 Milwaukee, Wisconsin 53202  
 (414) 291-8840  
 FAX 291-8841

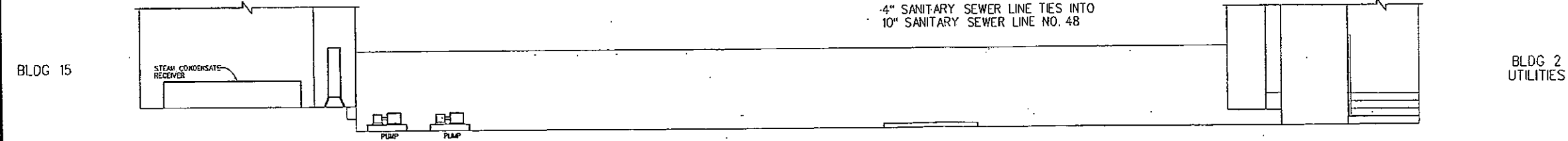
MILLER BREWING CO.- MILW. PLANT  
 WATER PIPING LAYOUT  
 UTILITIES BASEMENT & TUNNEL PLAN

SHEET NO.	
DWG. NO.	D-62
DATE	7/8/91
PROJ. NO.	10293



PLAN VIEW  
 APPROX SCALE: 1/4" = 1'-0"  
 THIS TUNNEL CONTAINS THE FOLLOWING UTILITIES AND PROCESSES

- 2" STEAM CONDENSATE
- 20" 12 lb STEAM
- 6" 115 lb STEAM
- 6" 115 lb STEAM
- 10" PPW - PROCESS PURIFIED WATER
- 2" SODIUM HYDROXIDE
- 2" STEAM CONDENSATE
- 2" INSTRUMENT AIR
- 1 15/32" ELECTRICAL CONDUIT
- 1 1/2" CITY WATER
- 2" FROM STEAM CONDENSATE PUMPS IN TUNNEL
- 2 15/32" STEAM CONDENSATE
- 2" STEAM CONDENSATE
- 2" STEAM CONDENSATE FROM VERTICAL TANK
- 4" 4000 VOLT ELECTRICAL CONDUIT
- 2" BLACK PLASTIC ELECTRICAL CONDUIT
- 2" ELECTRICAL CONDUIT
- 6" COMPRESSED AIR
- 4" CARBON DIOXIDE DISTRIBUTION (SUPPLY)
- 3" FROM STEAM CONDENSATE TANK TO PUMP (EAST)
- 3" FROM STEAM CONDENSATE TANK TO PUMP (WEST)
- 2" DRAIN LINE OFF OF LINE 13
- 3/32" ELECTRICAL CONDUIT, TERMINATES IN TUNNEL
- 3/32" START IN TUNNEL OFF OF LINE 15
- 3/32" STEAM TRAP DRAIN LINE, TERMINATES IN TUNNEL
- 3/32" ELECTRICAL CONDUIT TO PUMP
- 3/32" ELECTRICAL CONDUIT TO PUMP
- 1 5/32" ELECTRICAL CONDUIT - BLACK CABLE
- 1 5/32" CARBON DIOXIDE DISTRIBUTION (SUPPLY)
- 2 15/32" STEAM CONDENSATE TO TANK
- 2 15/32" STEAM CONDENSATE TO TANK
- 2" STEAM CONDENSATE TO TANK
- 2" STEAM CONDENSATE TO TANK
- 2" ELECTRICAL CONDUIT
- 1" ELECTRICAL CONDUIT REDUCE DOWN TO 3/32", TERMINATES IN TUNNEL
- 6" CITY WATER
- 10" PPW - PROCESS PURIFIED WATER
- 4" ELECTRICAL CONDUIT
- 2" ELECTRICAL CONDUIT
- 2" ELECTRICAL CONDUIT
- 2" ELECTRICAL CONDUIT
- 1 15/32" ELECTRICAL CONDUIT
- 1 5/32" ELECTRICAL CONDUIT
- 1 1/2" ELECTRICAL CONDUIT
- 3/32" ELECTRICAL CONDUIT, TERMINATES IN TUNNEL
- 4" SANITARY SEWER LINE (SECTION B) TO 10" IN TUNNEL (SECTION C)
- 4" SANITARY SEWER LINE TIES INTO 10" SANITARY SEWER LINE NO. 48

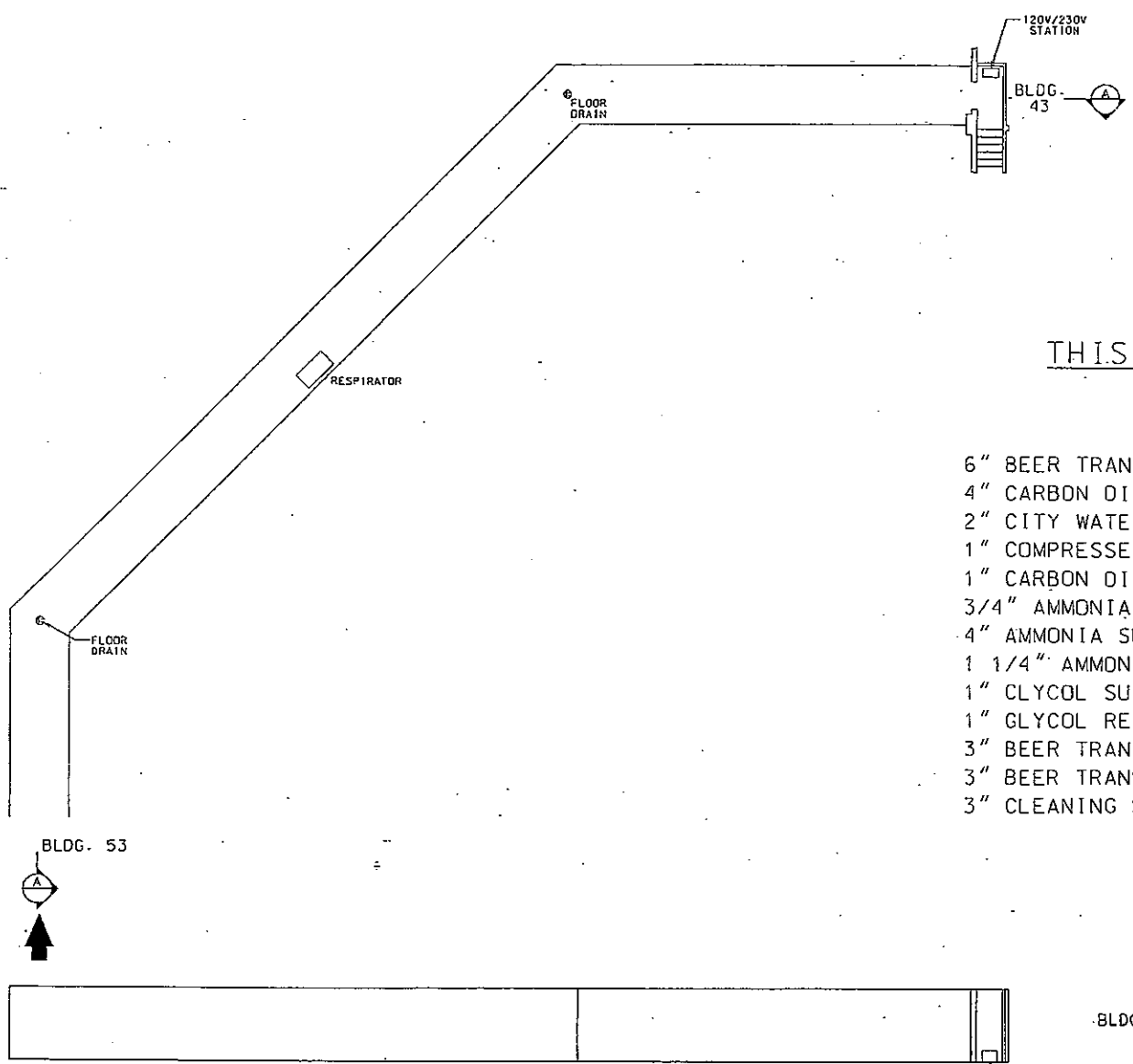
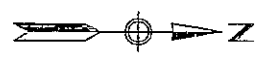


SOUTH ELEVATION LOOKING NORTH

SECTION A

VERIFY SCALE BAR IS ONE INCH ON ORIGINAL DRAWING. IF NOT ONE INCH ON THIS SHEET, ADJUST SCALES ACCORDINGLY.	DSGN DR D.J.SCHUTTEN	NO. DATE REVISION BY APVD	TRIAD ENGINEERING INCORPORATED 325 East Chicago Street Milwaukee, Wisconsin 53202 (414)-291-8840 FAX 291-8841	MILLER BREWING COMPANY MILWAUKEE PLANT TUNNEL CONNECTING BLDG 2 AND BLDG 15	SHEET NO. 11018-0
	DATE APRIL 1993				PROJ NO. 11018

RL/A



THIS TUNNEL CONTAINS THE FOLLOWING UTILITIES  
AND PROCESSES

- |                                       |   |
|---------------------------------------|---|
| 6" BEER TRANSFER (MR HEADER TO K-HSE) | 4" NON-CHLORINATED PURIFIED PROCESS WATER |
| 4" CARBON DIOXIDE GAS, PURE           | 6" BEER TRANSFER                          |
| 2" CITY WATER                         | 3/4" 110V ELECTRICAL CONDUIT (4 EACH)     |
| 1" COMPRESSED AIR                     | 2" 230V ELECTRICAL CONDUIT (3 EACH)       |
| 1" CARBON DIOXIDE GAS, PURE           | 1" CARBON DIOXIDE                         |
| 3/4" AMMONIA PUMP OUT                 | 3" BEER TRANSFER (PUMP 4087 FROM K-HSE)   |
| 4" AMMONIA SUCTION                    | 3" BEER TRANSFER (LINE 110XX TO K-HSE 3A) |
| 1 1/4" AMMONIA LIQUID                 | 3" BEER TRANSFER (LINE 109XX TO K-HSE 3B) |
| 1" GLYCOL SUPPLY                      |   |
| 1" GLYCOL RETURN                      |   |
| 3" BEER TRANSFER (BT OUT FROM K-HSE)  |   |
| 3" BEER TRANSFER (K-HSE)              |   |
| 3" CLEANING SOLUTION SUPPLY           |   |

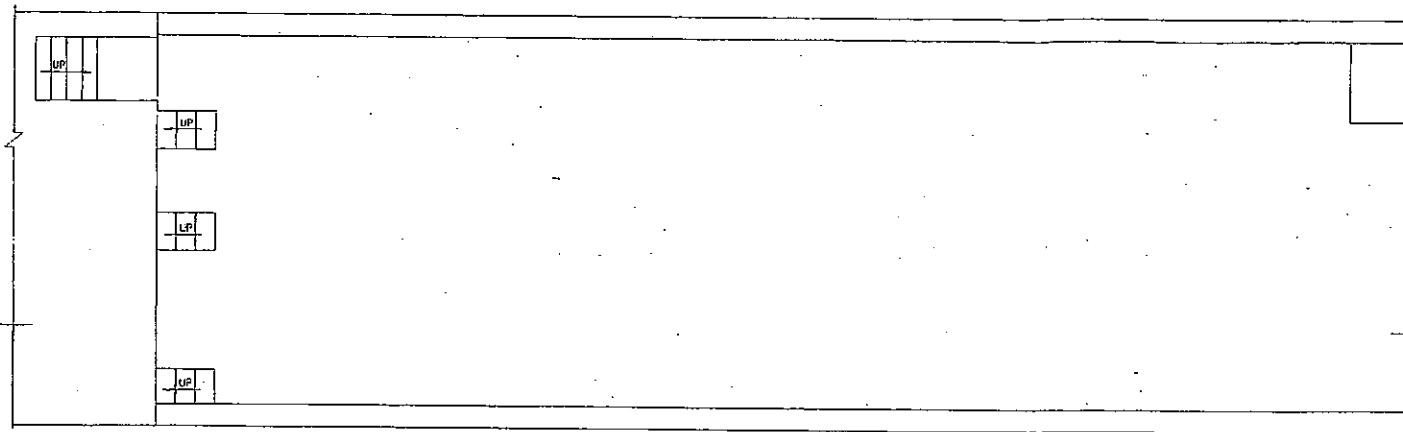
EAST ELEVATION LOOKING WEST

SECTION **A**  
APPROX. SCALE: 1/8"=1'-0"

*N/A*

MILLER BREWING COMPANY MILWAUKEE, WISCONSIN									
PLANT 01									
TUNNEL CONNECTING BLDG. 43 & BLDG. 53									
DR		DATE		INITIAL		DATE		SUBJECT NO. NO. RELEASE NO. SHEET	
CH		1-93		N/A		1-93		TRIAD JOB NO. 9555T4	
APPR.								ORNG. NO. 55574-0	
DESCRIPTION	REV.	OWNED BY	DATE	DESCRIPTION	REV.	OWNED BY	DATE	SCALE	1/8"=1'-0"

BLDG 58



BLDG 44  
2nd FLOOR

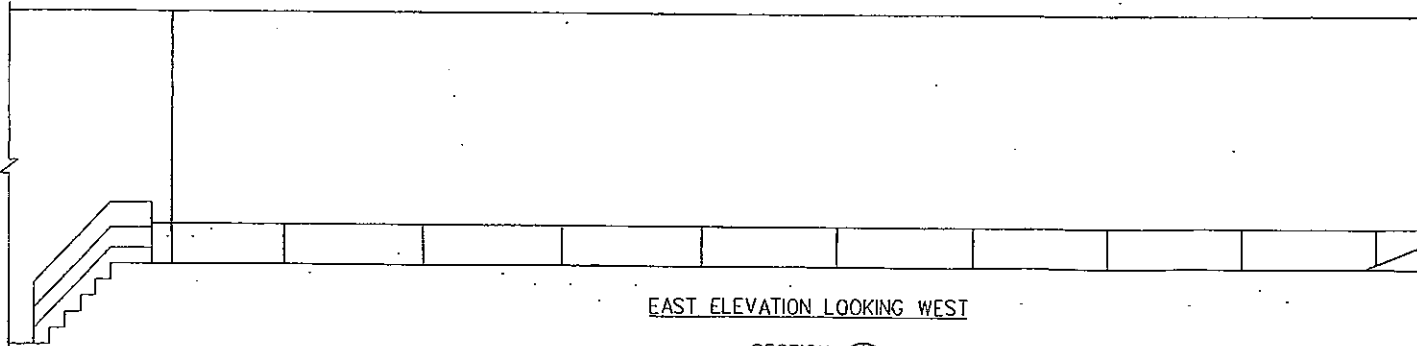


PLAN VIEW  
APPROX SCALE: 1/8"=1'-0"

THIS PIPE BRIDGE CONTAINS THE FOLLOWING UTILITIES AND PROCESSES

- 1/2" ELECTRICAL CONDUIT
- 1/2" ELECTRICAL CONDUIT
- 3/4" ELECTRICAL CONDUIT - 2 LINES, TERMINATES IN BRIDGE
- 12" HIGH TEMPERATURE HOT WATER RETURN
- 12" HIGH TEMPERATURE HOT WATER SUPPLY
- 1/2" PLASTIC ELECTRICAL CONDUIT
- 8" HIGH PRESSURE STEAM (115 lb)
- 3/2" NATURAL GAS
- 1" ELECTRICAL CONDUIT
- 8" FINISHED BEER 13211
- 4" PPW - PROCESS PURIFIED WATER
- 2" PROCESSED WATER (3211)
- 3/2" ELECTRICAL CONDUIT
- 3" PPW - PROCESS PURIFIED WATER
- 8" FINISHED BEER 1311A1
- 3" PPW - PROCESSED PURIFIED WATER (311A)
- 8" FINISHED BEER 131B1
- 3" PPW - PROCESSED PURIFIED WATER (31B1)
- 2" FIRE SPRINKLER LINE
- 1/2" ELECTRICAL CONDUIT
- 1/2" ELECTRICAL CONDUIT
- 3/2" ELECTRICAL CONDUIT, TERMINATES IN BRIDGE
- 3/2" ELECTRICAL CONDUIT, TERMINATES IN BRIDGE
- 3/2" ELECTRICAL CONDUIT
- 4" ELECTRICAL CONDUIT, 20,400 VOLTS
- 3/2" ELECTRICAL CONDUIT
- 1" ELECTRICAL CONDUIT, TERMINATES IN BRIDGE
- 1/2" ELECTRICAL CONDUIT, TERMINATES IN BRIDGE
- 1/2" ELECTRICAL CONDUIT
- 2" ELECTRICAL CONDUIT 2 LINES
- 2" ELECTRICAL CONDUIT
- 3/2" ELECTRICAL CONDUIT
- 4" ELECTRICAL CONDUIT
- 1" ELECTRICAL CONDUIT
- 1/2" ELECTRICAL CONDUIT, TERMINATES IN BRIDGE
- 3/2" ELECTRICAL CONDUIT 12 LINES
- 1" ELECTRICAL CONDUIT
- 3/2" ELECTRICAL CONDUIT, TERMINATES IN BRIDGE
- 3/2" ELECTRICAL CONDUIT, TERMINATES IN BRIDGE
- 3/2" ELECTRICAL CONDUIT, TERMINATES IN BRIDGE
- 3/2" ELECTRICAL CONDUIT
- 1/2" ELECTRICAL CONDUIT
- 3/2" ELECTRICAL CONDUIT (ENDS IN BRIDGE)
- 3/2" COMPRESSED AIR
- 3/2" ELECTRICAL CONDUIT, TERMINATES IN BRIDGE
- 3/2" ELECTRICAL CONDUIT, TERMINATES IN BRIDGE
- 2" ELECTRICAL CONDUIT, TERMINATES IN BRIDGE
- 1" ELECTRICAL CONDUIT
- 1" ELECTRICAL CONDUIT, TERMINATES IN BRIDGE
- 3/2" ELECTRICAL CONDUIT, TERMINATES IN BRIDGE

BLDG 58



BLDG 44  
2nd FLOOR

EAST ELEVATION LOOKING WEST

SECTION A  
APPROX SCALE: 1/8"=1'-0"

SP 1976

VERIFY SCALE  
BAR IS ONE INCH ON  
ORIGINAL DRAWING.  
IF NOT ONE INCH ON  
THIS SHEET, ADJUST  
SCALES ACCORDINGLY

DESIGN  
BY  
O.J. SCHITTEN  
CHECK  
APPROVED

NO.	DATE	REVISION	BY	APPROVED

TRIAD  
ENGINEERING  
INCORPORATED

325 East Chicago Street  
Milwaukee, Wisconsin 53202  
14743-291-8840  
FAX 291-8841

MILLER BREWING COMPANY  
MILWAUKEE PLANT  
STATE STREET OVERPASS-BLDG 59, CONNECTING BLDG 44 AND BLDG 58

SHEET NO.  
1101B-00B  
DATE  
APRIL 1993  
PROJ. NO.  
1101B