

153

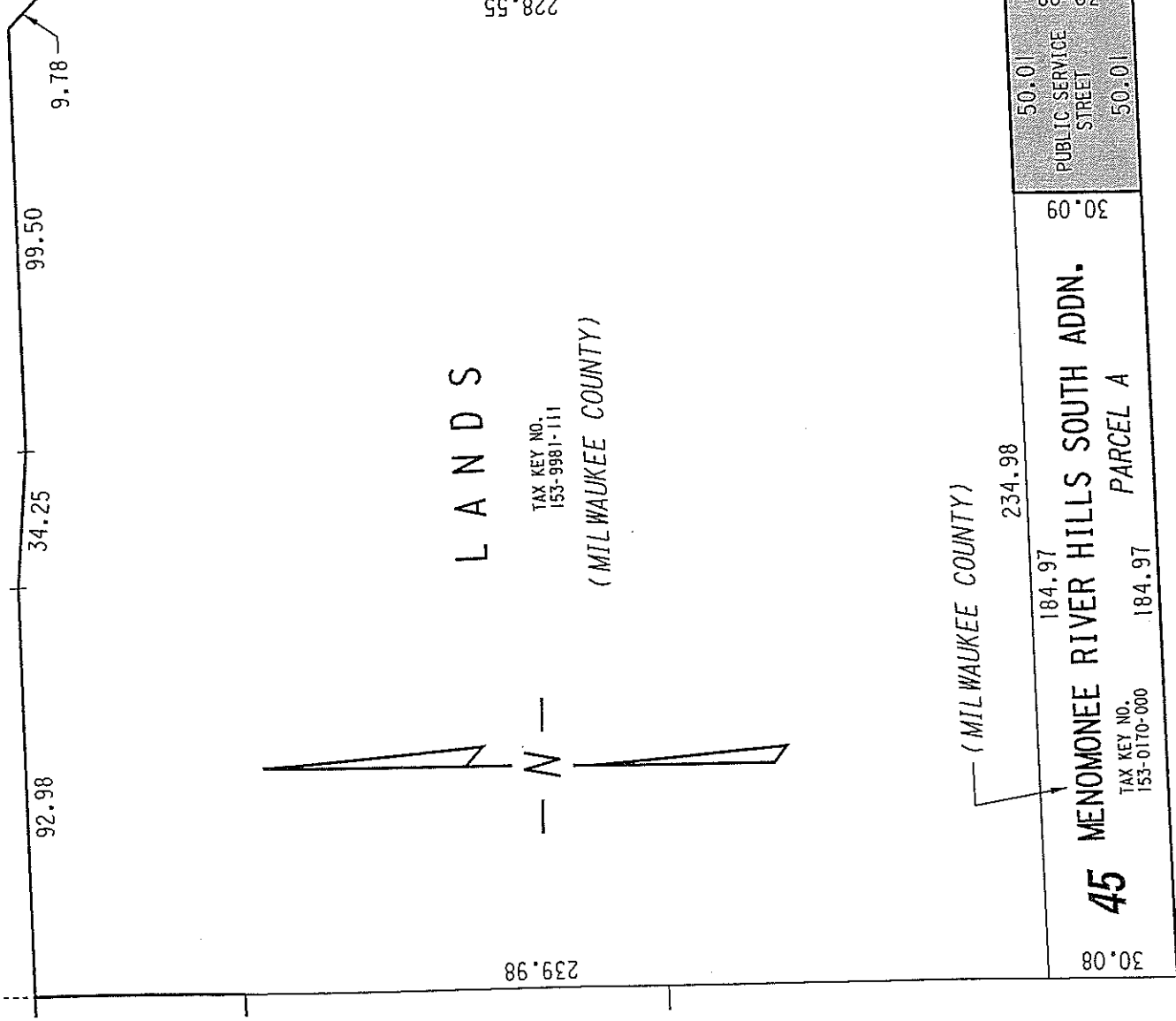
N.E. 1/4 SEC. 28, T.8N., R.2E.

(R.O.W. VARIES)

SEC. LINE

W. Mill

Rd.



W. Winfield

(60' R.O.W.)

Ave.

PORTION OF PUBLIC STREET PROPOSED TO BE VACATED

EXHIBIT "A"

FILE NO. 090789

INFRASTRUCTURE SERVICES DIVISION

MILWAUKEE, WISCONSIN

ASSIGNED TO: W.E. FUCHS

CH'K'D. BY: W.E. FUCHS

DRAWN BY: W.E.F.

DATE: DEC. 29, 2009

PROJECT/GRANT NO.: WK52337287

SCALE: 1" = 40'

APPROVED BY:

Marisa Cornell

CENTRAL DRAFTING & RECORDS MANAGER

CAW

CIVIL ENGINEER

Signature of Marisa Cornell