



Planning Group

January 8, 2006

City Hall
200 E. Wells Street
Milwaukee, WI 53202
Attn: City of Milwaukee Common Council

**Re: Columbia St. Mary's – Main Hospitals
Detailed Plan Development - Request for Minor Modification**

Dear City of Milwaukee Common Council:

On behalf of Columbia St. Mary's, HOK is pleased to resubmit project documentation related to the above-referenced project which has resulted from issues encountered during construction (either from cost, program changes or construction logistics). The minor changes have been:

1. The pre-cast concrete panel system above the third floor level on the East end of the building is changed to an aluminum panel system.
2. The pre-cast concrete panel system at the fifth floor level and above on the South end of the building is changed to an aluminum panel system.
3. The railings at the roof levels have been removed.
4. The curtain wall at the central portion of the penthouse has been changed to an aluminum panel system with columns revealed at the east end.
5. The curtain wall system at the west end of the upper level mirrors the east end of the building.
6. The building area above the main entrance driveway at the third floor level has been deleted. This occurs under the mass of the building.
7. The screen wall surrounding the mechanical system at roof on level 5 along Prospect Avenue has been removed. The equipment will be painted to match the aluminum panel system.

Attached for your review is the a 11x17 color presentation (and CD with the copy of the images) for your use that compares the original DPD Submittal images with the modifications outlined above.

Should there be any questions about these design changes feel free to call at any time at either 314.421.2000 or William.Wahle@hok.com.

Sincerely,
Hellmuth, Obata + Kassabaum

Bill

William O. Wahle, AIA
Vice President
Project Manager

cc: P. Westrick, C. Smocke, J. Mallory, W. Palmer, P. Strohm, File



Columbia St. Mary's

A Passion for Patient Care

Main Hospital Exterior Modifications

January 8, 2007



DPD Submittal



Modification

Lake Drive Comparison

from the Park

DPD Submittal

Modification

Precast and Glass
Building with Metal Trim

Metal and Glass Building with
Precast Concrete Base



Metal at South Elevation

Metal at Penthouse

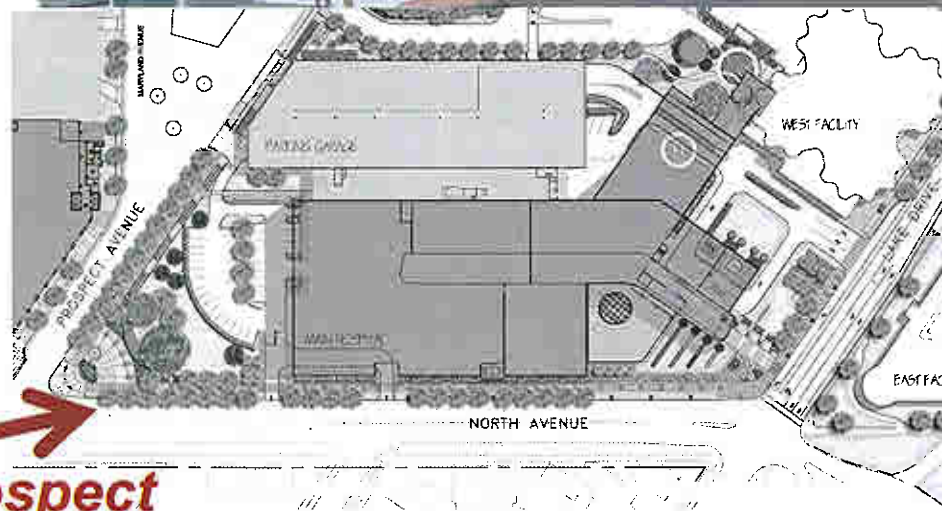
Metal on East Bed Tower

Lake Drive Comparison

from Prospect

DPD Submittal

Modification



Metal at West Elevation
Metal at Penthouse
Metal on South Elevation

prospect

 Columbia St. Mary's

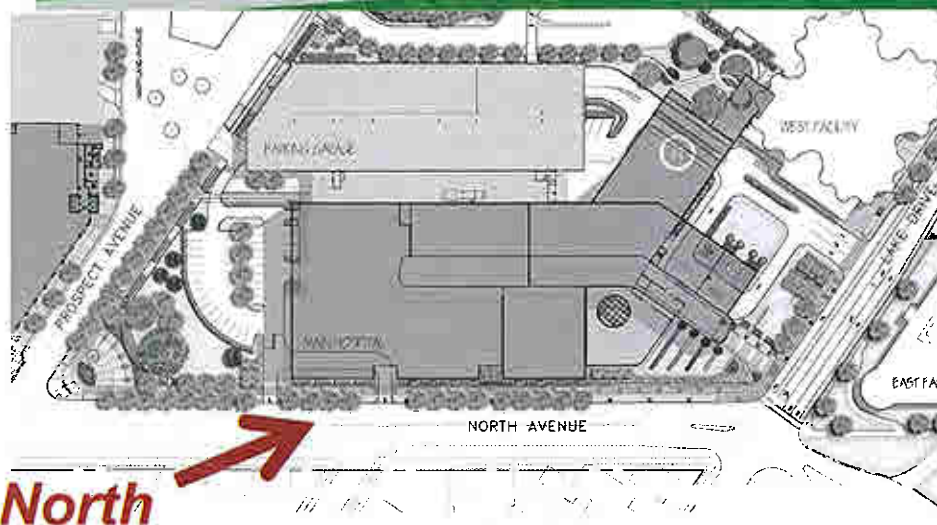


Lake Drive Comparison

from North Ave

DPD Submittal

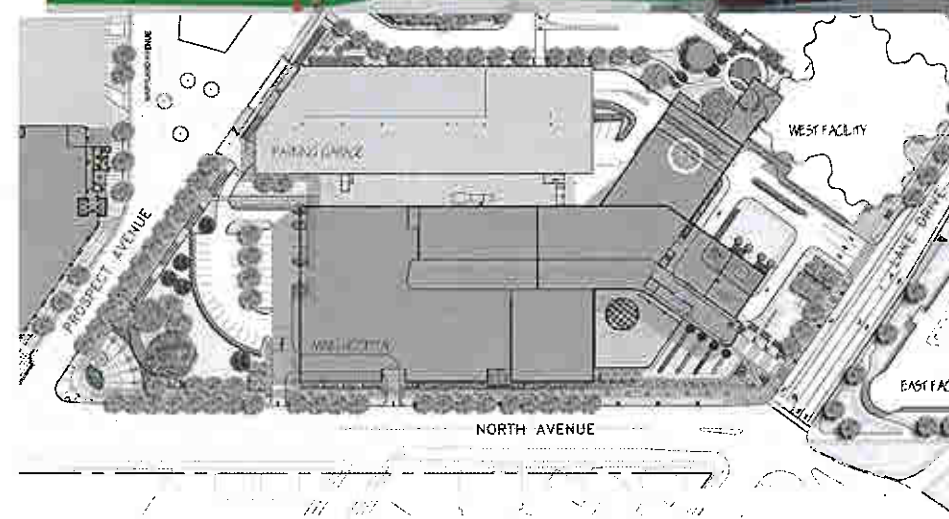
Modification



Metal at Penthouse

Metal at South Elevation

DPD Submittal



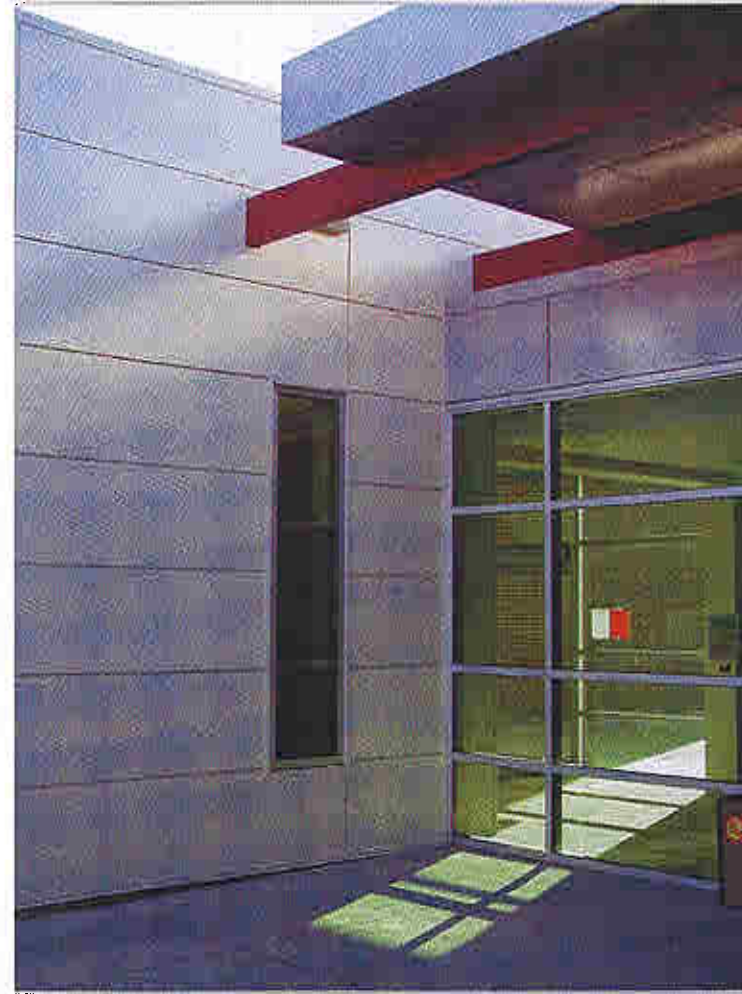
Modification



Metal at East Bed Tower
Metal at North Bed Tower
PreCast Concrete Base



TYPICAL HORIZONTAL JOINT



Lake Drive Modification



Lake Drive Modification



Lake Drive Modification





Columbia St. Mary's

A Passion for Patient Care

