

PLAT OF THE TOWN OF MILW. ON THE WEST SIDE OF THE RIVER

BLOCK 74

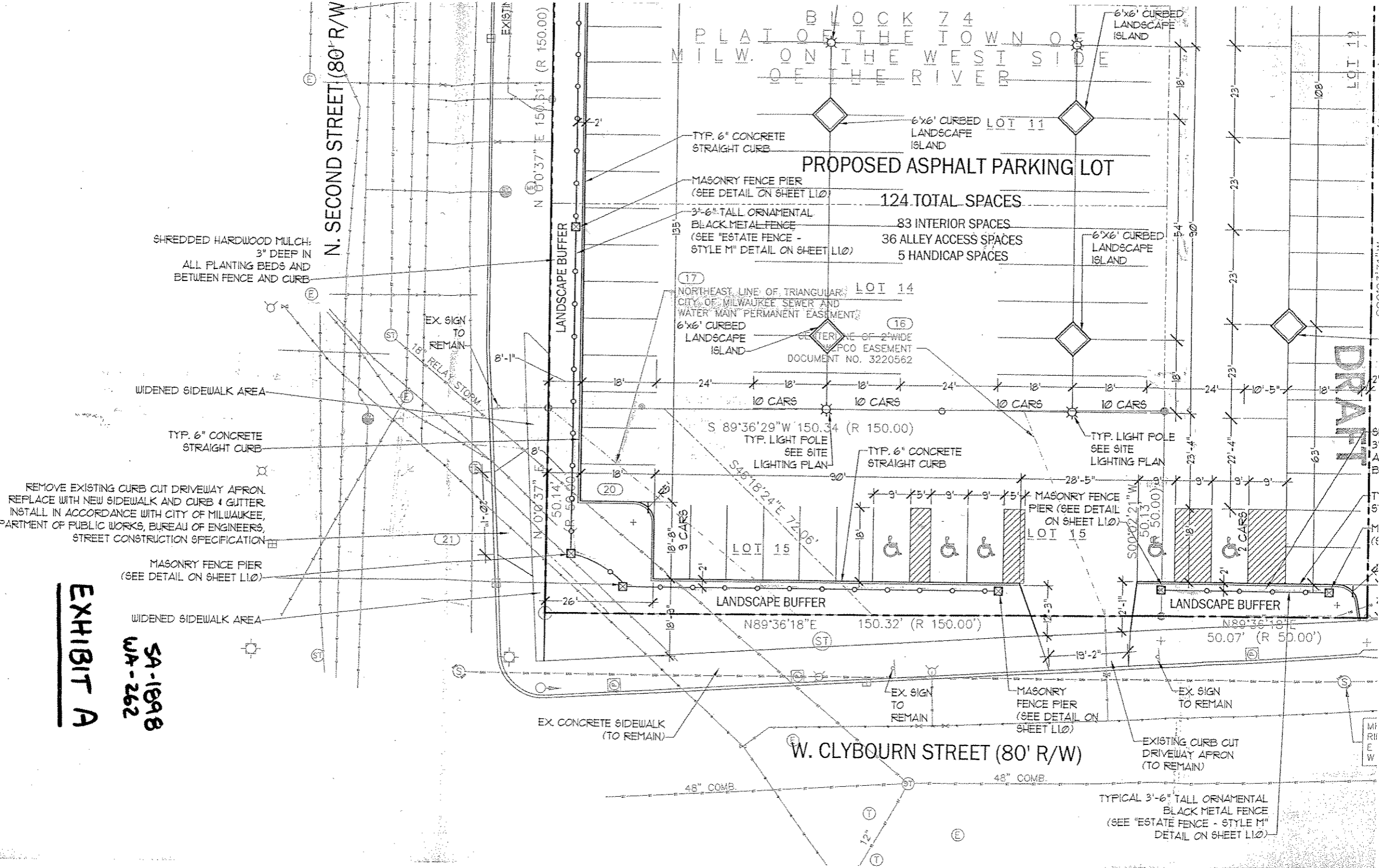
PROPOSED ASPHALT PARKING LOT

124 TOTAL SPACES

83 INTERIOR SPACES

36 ALLEY ACCESS SPACES

5 HANDICAP SPACES



SHREDDED HARDWOOD MULCH: 3" DEEP IN ALL PLANTING BEDS AND BETWEEN FENCE AND CURB

WIDENED SIDEWALK AREA

TYP. 6" CONCRETE STRAIGHT CURB

REMOVE EXISTING CURB CUT DRIVEWAY APRON. REPLACE WITH NEW SIDEWALK AND CURB & GUTTER. INSTALL IN ACCORDANCE WITH CITY OF MILWAUKEE, DEPARTMENT OF PUBLIC WORKS, BUREAU OF ENGINEERS, STREET CONSTRUCTION SPECIFICATION

MASONRY FENCE PIER (SEE DETAIL ON SHEET L10)

WIDENED SIDEWALK AREA

EX. CONCRETE SIDEWALK (TO REMAIN)

W. CLYBOURN STREET (80' R/W)

TYPICAL 3'-6" TALL ORNAMENTAL BLACK METAL FENCE (SEE "ESTATE FENCE - STYLE M" DETAIL ON SHEET L10)

DRAFT

**EXHIBIT A**

SA-1098  
WA-262