

360

S.W. 1/4 SEC. 21, T.7N., R.22E.

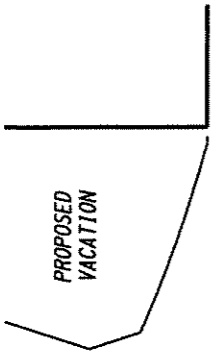
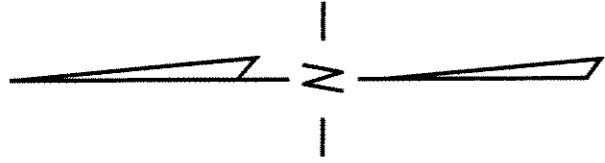
①

R= 654.66'
 A= 65.64'
 C= 65.61'
 1<- 5°44'41"
 D<- 2°52'20.5"
 C.B.= N.41°41'07.5"E.

②

R= 297.50'
 A= 48.63'
 C= 48.57'
 1<- 9°21'54"
 D<- 4°40'57"
 C.B.= S.11°07'26"W.

(R.O.W. VARIES)



St.

E. Pleasant

St.

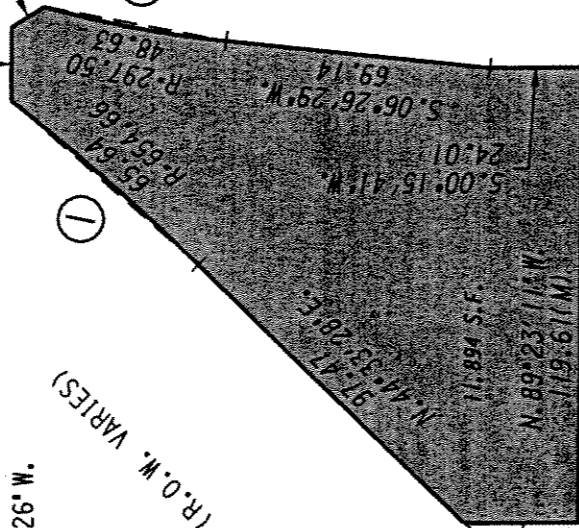
80 (P)

S.89°15'57"E.
 19.32

S.30°57'47"E.
 10.20

②

①



St.

N. Water

LOT 11

120.53
 TAX KEY NO.
 392-1795-000

80.33

N. Jefferson

80.33

FRACTIONAL

9 60

120.53
 S.W. 1/4

8

W. 1/2 OF THE

60

121

4 60

120.53
 OF SEC. 21

5

(E. Lyon St.)

PORTION OF PUBLIC STREET PROPOSED TO BE VACATED

REVISED: JUNE 14, 2005
 LIMITS REVISED

EXHIBIT "A"
 FILE NO. 041056

INFRASTRUCTURE SERVICES DIVISION

MILWAUKEE, WISCONSIN

ASSIGNED TO: W.E. FUCHS
 DRAWN BY: W.E.F.
 PROJECT/GRANT NO.: WK52337204
 APPROVED BY:

CH'K'D. BY: W.E. FUCHS
 DATE: MAY 4, 2005
 SCALE: 1" = 50'

maior dindhoff
 CENTRAL DRAFTING & RECORDS MANAGER

W.E. Fuchs
 CIVIL ENGINEER