

New Signs

'A': 6' wide x 8'-8" high double face monument sign, illuminated

'B': 6' wide x 11'-3" high double face monument sign, illuminated

'C': 6' wide x 6' high double face post & panel sign, non-lit

'D': 3' wide x 5' high double face post & panel sign, non-lit

Existing Signs

#1: 4' high x 10' wide temporary banner.

#2: 1300 South Wing, illuminated 70" high x 50" wide wall tenant sign. 6" high metal address numerals 1300 below sign.

#3: Canopy over 1300 entrance. 30" high x 9' long Ascension wording.

#4: 16" high x 25" wide metal Stearns Chapel sign.

#5: 8" high metal Ascension Church letters, area is 35" x 10' wide.

#6: Canopy near 1236 entrance. 14" high x 10' long Ascension wording.

#7: 6" high x 12" wide 1212 Synod Office letters on door window.

#8: Canopy over 26th St. entrance. 14" high x 8' long Ascension wording.

#9: 28" high x 24" wide metal wall sign with tenants listed.

#10: Canopy over 26th gym entrance. 12" high x 8' long Ascension Gym letters.

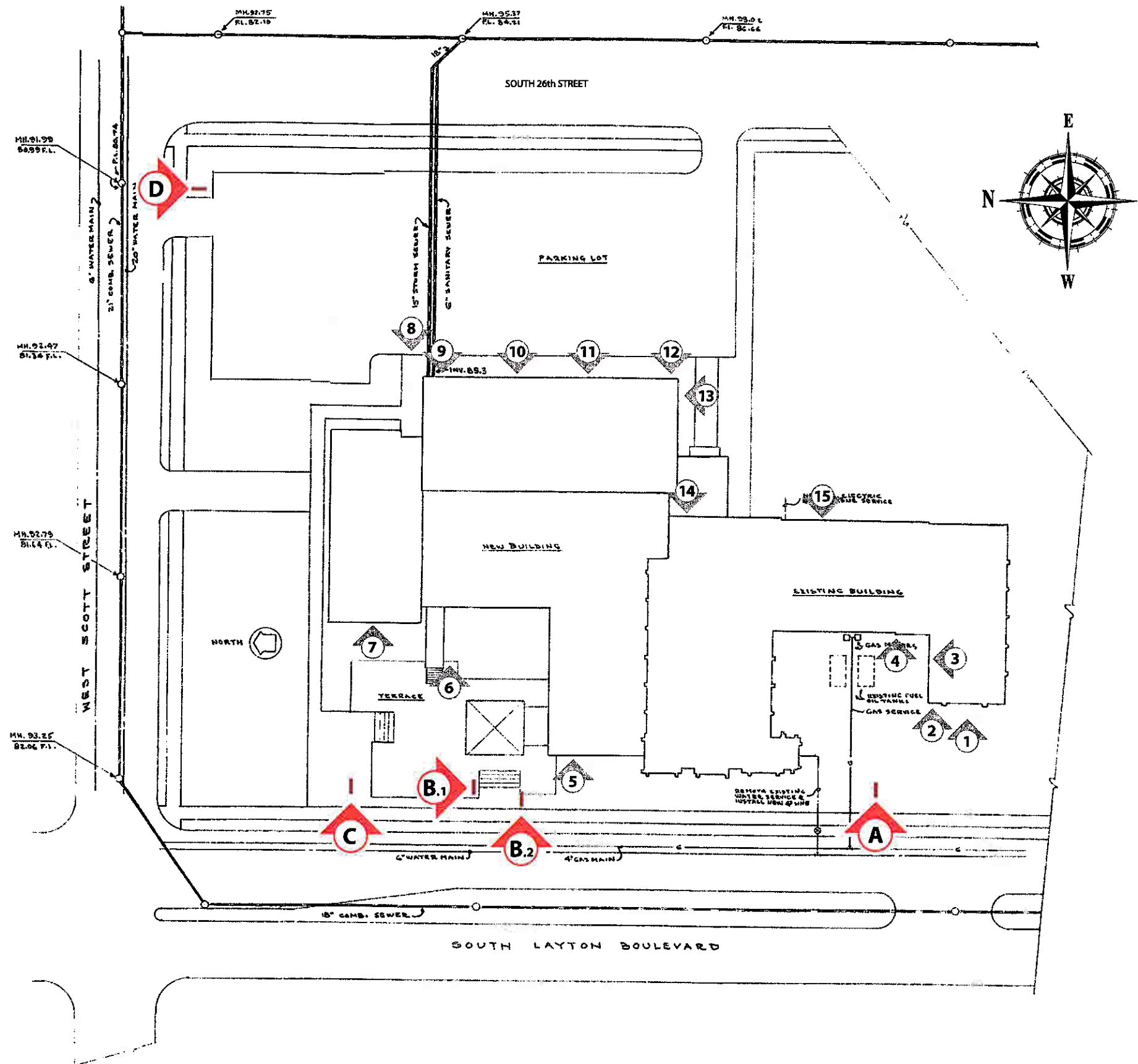
#11: 3' high x 8' wide temporary banner announcing 10:00 service.

#12: 1300 South Wing, non-lit 48" high x 36" wide metal sign with blank tenant spaces.

#13: Canopy over 26th St. alley disabled entrance. 12" high x 16' long Ascension wording.

#14: 24" high x 22" wide metal wall sign.

#15: 36" high x 24" wide metal wall sign with tenants listed.



PLOT PLAN
SCALE: 1/32" = 1'-0"



3130 Intertech Drive
Brookfield, WI 53045
262-781-3100 phone
262-781-4626 fax
www.triadcreativegroup.com

© Copyright 2005 - All designs, concepts and variations there of are the sole property of Triad Creative Group.

Triad retains the exclusive right to bid on the production of its designs.

Client
Ascension Lutheran Church
1236 S. Layton Blvd.
Milwaukee, WI 53215

Customer Approval
PRELIMINARY

Revision
added existing signs 11-7-07

Representative
Fred Meyer

Drawn By
MCM

Job Number
17698

Date
07-02-07

Scale
None

Sheet
Plot Plan

Client

**Ascension Lutheran
 Church**
 1236 S. Layton Blvd.
 Milwaukee, WI 53215

Customer Approval

Revision
 design 3-29-07
 layout 5-25-07
 base decoration 11-5-07

Representative
 David Bullis

Drawn By
 MCM

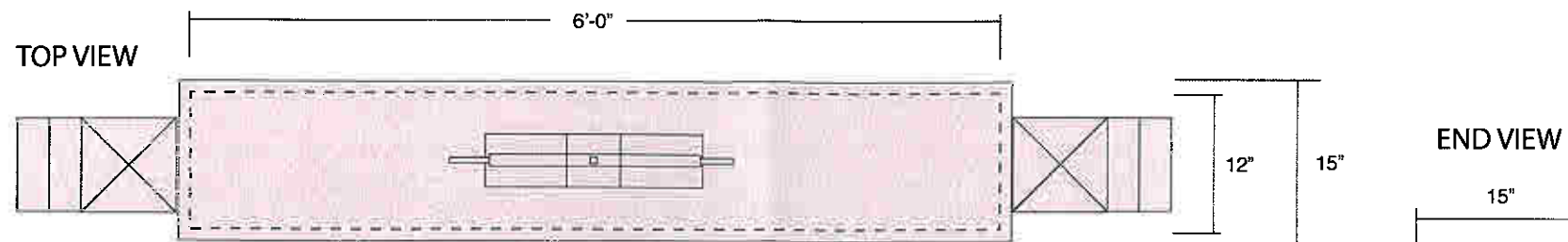
Job Number
 17698

Date
 04-26-06

Scale
 3/4" = 1' - 0"

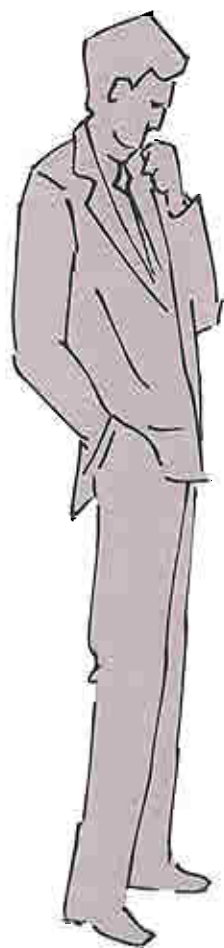
Sheet

1



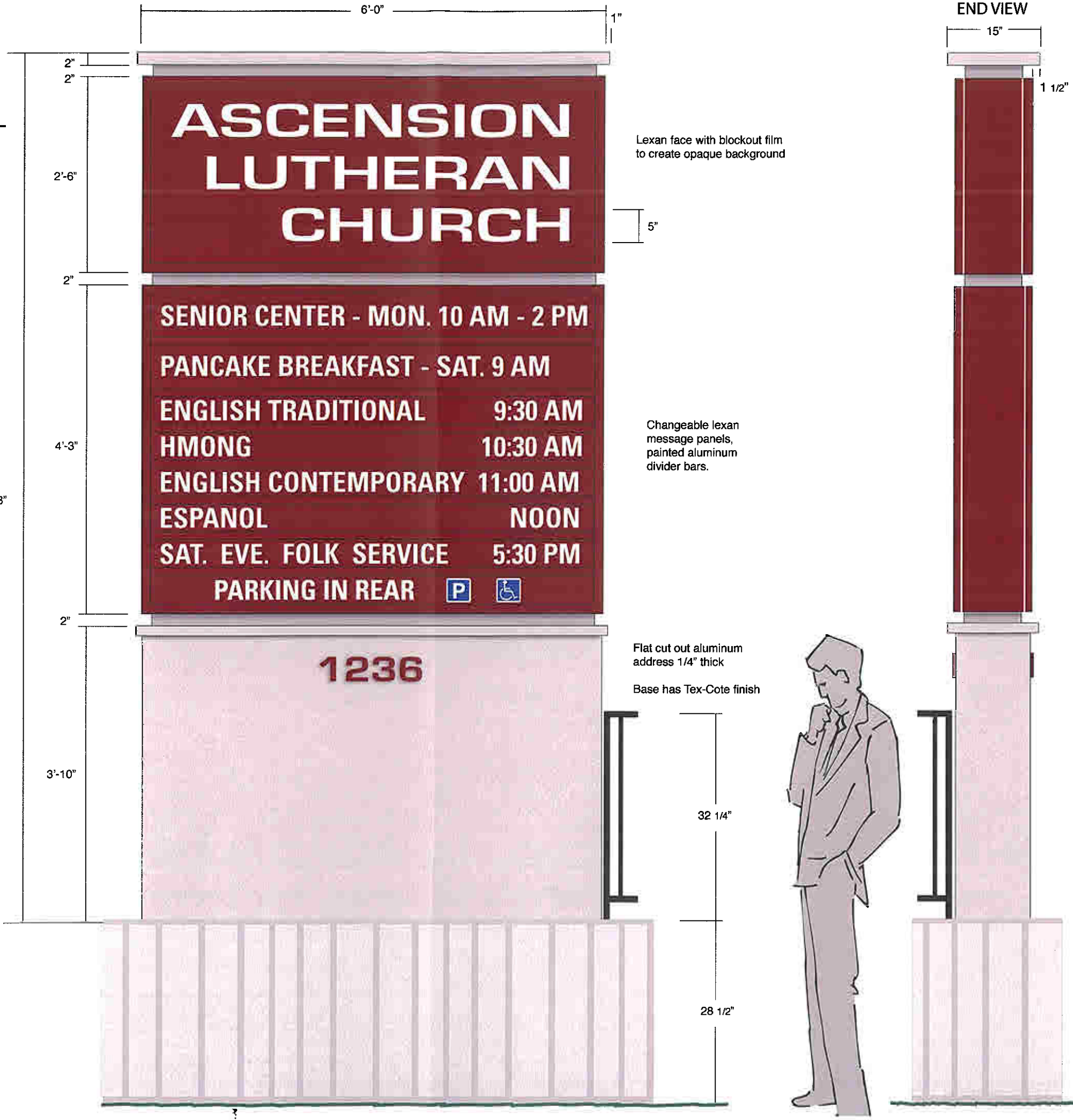
1/4" Double Face Monument Sign

- Lightly Illuminated
- White
- Background - Burgundy, (opaque)
- Sign body - Paint Burgundy to match face
- Sign base and spanner at top - Paint Lt. Grey, (tex-cote finish)
- Sign - Flat cut out aluminum 1/4" thick, stud mounted to base
- Decorated aluminum "Jerusalem" cross - Paint M.A.P. Brushed Aluminum
- Steel pipe buried into 12" x 48" deep concrete footing.



Double Face Monument Sign

Unfinished
 Paint - Burgundy, (opaque)
 Sign body - Paint Burgundy to match face
 Base and spanner at top - Paint Lt. Grey, (tex-cote finish)
 Flat cut out aluminum 1/4" thick, stud mounted to base
 Pipe buried into 12" x 48" deep concrete footing.



3130 Intertech Drive
 Brookfield, WI 53045
 262-781-3100 phone
 262-781-4626 fax
 www.triadcreativegroup.com

©
 Copyright 2005 - All designs, concepts and variations there of are the sole property of Triad Creative Group.
 Triad retains the exclusive right to bid on the production of its designs.

Client
Ascension Lutheran Church
 1236 S. Layton Blvd.
 Milwaukee, WI 53215

Customer Approval
 Revision
 design 3-29-07
 design 5-29-07
 elim. message center 11-5-07

Representative
 David Bullis
 Drawn By
 MCM

Job Number
17698

Date
 04-26-06

Scale
 3/4" = 1' - 0"

Sheet
2





3130 Intertech Drive
Brookfield, WI 53045

262-781-3100 phone
262-781-4626 fax
www.triadcreativegroup.com

©
Copyright 2005 - All designs, concepts
and variations there of are the sole
property of Triad Creative Group.

Triad retains the exclusive right
to bid on the production of its
designs.

Client

Ascension Lutheran Church

1236 S. Layton Blvd.
Milwaukee, WI 53215

Customer Approval

Revision
addition 3-29-07
opt. 2 5-25-07

Representative
Fred Meyer

Drawn By
MCM

Job Number
17698

Date
04-26-06

Scale
3/4" = 1' - 0"

Sheet
3



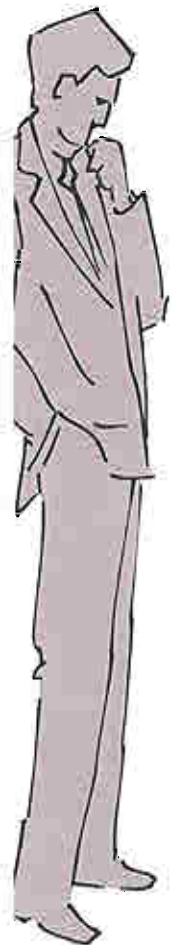
Replaces this sign.

Sign "C"

One (1) Double Face Identification Sign

Non- Lit
Graphics - Pressure sensitive vinyl
3/4" MDO sign face - Paint with sign enamel
Painted 4 x 4 cedar posts with finials, direct bury posts into ground.

NOTE: New sign to be installed perpendicular to Layton Blvd.



3130 Intertech Drive
Brookfield, WI 53045

262-781-3100 phone
262-781-4626 fax
www.triadcreativegroup.com

©
Copyright 2005 - All designs, concepts
and variations there of are the sole
property of Triad Creative Group.

Triad retains the exclusive right
to bid on the production of its
designs.

Client

**Ascension Lutheran
Church**

1236 S. Layton Blvd.
Milwaukee, WI 53215

Customer Approval

Revision
addition 5-29-07

Representative
Fred Meyer

Drawn By
MCM

Job Number
17698

Date
04-26-06

Scale
3/4" = 1' - 0"

Sheet

4



Sign "D"
One (1) Double Face Identification Sign

Non-Lit
Graphics - Pressure sensitive vinyl
3/4" MDO sign face - Paint with sign enamel
Painted 4 x 4 cedar posts, direct bury into ground.

TOP VIEW



3'-0"



opposite face

