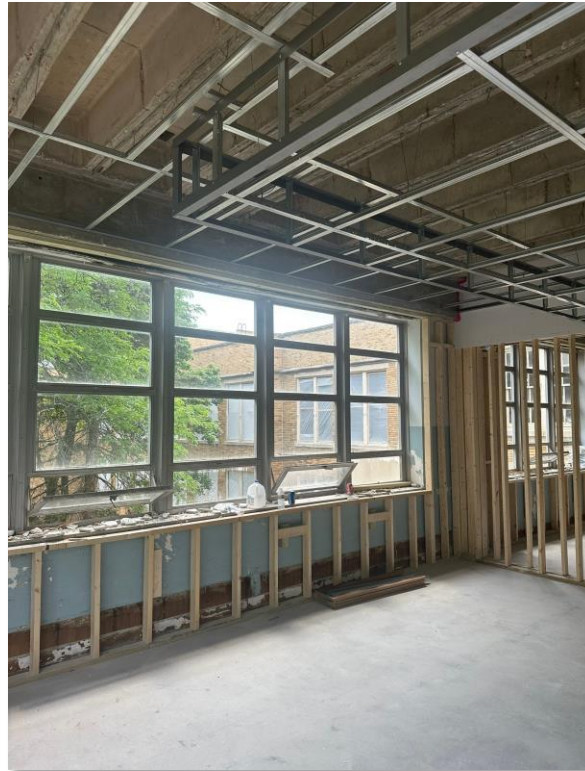


EDISON SCHOOL APARTMENT PROJECT

SBE, RPP and Section 3 Participation Performance Report through June 30, 2023



Demolition to create new corridor



Interior framing, prerock and ceiling framing



Townhouses are backfilled and underground plumbing

Submitted by:  CROSS MANAGEMENT SERVICES, INC.

Date: July 20, 2023

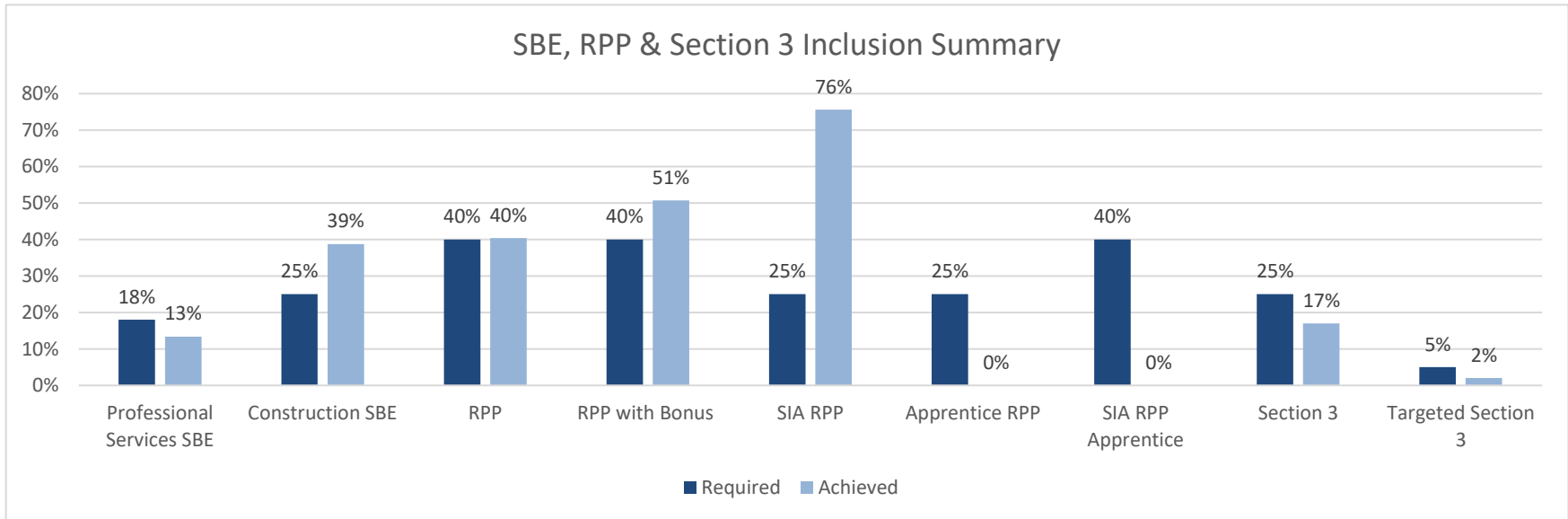
Disclaimer:

On January 1, 2023, the City of Milwaukee required contractors to use the city-created Labor Compliance Reporting ("LCR") system for tracking workforce hours. The information on the RPP Reports generated by the LCR system is error prone and unreliable. Until the LCR system is tested fully, we disclaim the accuracy of the RPP, SIA RPP and Section 3 information reported herein.

Project Summary

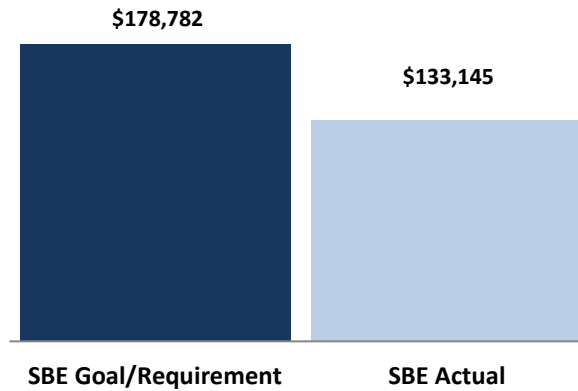
Gorman is partnering with Malik Cupid and Lutheran Social Services of Wisconsin and Upper Michigan on redeveloping the former Edison Middle School into 64 affordable apartments with another 12 townhouse-style units. The project’s financing includes low-income housing tax credits (“LIHTC”) awarded by Wisconsin Housing and Economic Development Authority (“WHEDA”) and Tax Incremental Financing and Housing Trust funds from the City of Milwaukee.

Developer:	Gorman & Company
Project Address:	5372 N 37 th Street, Milwaukee, WI 53209
Professional Services Cost Subject to Inclusion	\$993,233
Applicable Professional Services Payments to Date	\$788,642
Construction Cost Subject to Inclusion	\$16,697,076
Applicable Construction Draw to Date	\$1,672,110



SBE Professional Services Inclusion

Through the period covered by this report, this project has achieved 13% SBE participation for Professional Services.



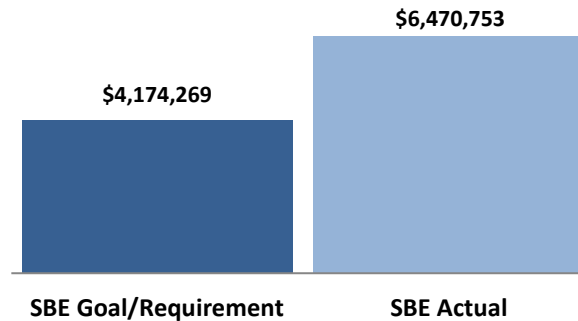
Total Value of SBE Payments	Goal/Requirement	Actual	Status
SBE Participation Percentage	18%	13%	-5%
Value of SBE Participation	\$178,782	\$133,145	-\$44,637

Table 1: Professional Services SBE Inclusion

NAME OF CERTIFIED FIRM	DBE/SBE	SUBCONTRACTOR OF	SERVICE PERFORMED OR MATERIALS SUPPLIED	SUBCONTRACT AWARD AMOUNT	TOTAL AMOUNT PAID TO DATE
Cross Management Services, Inc.	DBE/SBE	Gorman & Company	Inclusion Consultant	\$ 67,000	\$ -
LF Green Development LLC	SBE	Gorman & Company	Environment Consultant	\$ 66,145	\$ 62,072
TOTAL INCLUSION				\$ 133,145	\$ 62,072
INCLUSION, AS PERCENT OF PROFESSIONAL SERVICES COST SUBJECT TO INCLUSION				13%	
INCLUSION, AS PERCENT OF PROFESSIONAL SERVICES APPLICABLE DRAW TO DATE					8%

SBE Construction Inclusion

Through the period covered by this report, this project has achieved 39% SBE participation for Construction.



Total Value of SBE Payments	Goal/Requirement	Actual	Status
SBE Participation Percentage	25%	39%	+14%
Value of SBE Participation	\$4,174,269	\$6,470,753	+\$2,296,484

Table 2: Construction SBE Inclusion

NAME OF CERTIFIED FIRM	DBE / SBE	SUBCONTRACTOR OF	SERVICE PERFORMED OR MATERIALS SUPPLIED	SUBCONTRACT AWARD AMOUNT	TOTAL AMOUNT PAID TO DATE
Dynamic Contracting Services, LLC	SBE	Gorman & Company	Demolition	\$ 513,774	\$ 380,218
Dynamic Contracting Services, LLC	SBE	Gorman & Company	Remediation	\$ 272,645	\$ 227,660
JRT Top Notch Roofs LLC	SBE	Gorman & Company	TPO Roofing	\$ 692,934	
JRT Top Notch Roofs LLC	SBE	Gorman & Company	Gutters & Downspouts	\$ 11,000	
R.D. Woods Co. Inc.	SBE	Gorman & Company	Masonry Restoration	\$ 159,500	
Skyrise Construction Group, LLC	SBE	Gorman & Company	Gypsum Drywall	\$ 763,493	
Skyrise Construction Group, LLC	SBE	Gorman & Company	Insulation Systems	\$ 156,951	
Skyrise Construction Group, LLC	SBE	Gorman & Company	Ceiling Framing	\$ 257,317	
Skyrise Construction Group, LLC	SBE	Gorman & Company	Painting & Staining	\$ 377,037	\$ 312
Skyrise Construction Group, LLC	SBE	Gorman & Company	Rough Carpentry - Labor	\$ 293,888	
Skyrise Construction Group, LLC	SBE	Gorman & Company	Rough Carpentry - Material	\$ 417,215	\$ 1,088
Skyrise Construction Group, LLC	SBE	Gorman & Company	Townhomes	\$ 2,491,309	
Ward Welding and Fabrication	SBE	Gorman & Company	Steel Fabrication and Erection	\$ 63,690	
TOTAL INCLUSION				\$ 6,470,753	\$ 609,278
INCLUSION, AS PERCENT OF CONSTRUCTION COST SUBJECT TO INCLUSION				39%	
INCLUSION, AS PERCENT OF APPLICABLE CONSTRUCTION DRAWS TO DATE					36%

RPP Participation

As shown in Table 3 below, the RPP inclusion achieved is 40% and 51% when the bonus hours for SIA RPP hours are included.

Table 3: RPP Participation by Contractor

Contractor	Trade	On-Site Construction Hours				
		Total Hours Worked	RPP Worker Hours	RPP %	SIA RPP Hours	SIA RPP %
AA Security	Teledata Installer	85.50				
AK Carpentry LLC	Carpentry					
Blair Fire Protection, LLC	General Laborer	1.50				
Dynamic Contracting Services, LLC	General Laborer	2,210.50	766.00	35%	418.00	55%
Fischer Companies, Inc.	General Laborer	50.25				
M R Window Solutions, LLC	General Laborer	427.50	387.50	91%	387.50	100%
Neuman Plumbing & Heating Inc.	Plumber	120.00				
NSI Electrical Contractors, Inc.	Operator	287.00				
R.D. Woods Co., Inc.	Carpentry	148.00	74.00	50%	74.00	100%
Skyrise Construction Group, LLC	Electrician	200.00	200.00	100%	200.00	100%
Total Hours		3,530.25	1,427.50	40%	1,079.50	76%
Bonus SIA RPP Hours			363.24			
Total RPP Hours with Bonus		3,530.25	1,790.74	51%		

Table 4: RPP Participation by Craft

Craft	RPP Hours	# of RPP Workers
Laborer	1,227.50	8
Carpenter	200.00	1
Total	1,427.50	9

Table 5: RPP Participation by Zip Code

Zip Code	RPP Hours	# of RPP Workers
53204	291.00	2
53210	74.00	1
53212	387.50	2
53215	327.00	2
53220	173.00	1
53221	175.00	1
Total	1,427.50	9

Table 6: RPP Participation by Race

Race	RPP Hours	# of RPP Workers
Causasian	387.50	2
Hispanic or Latino	1,040.00	7
Total	1,427.50	9

Table 7: RPP Participation by Gender

Gender	RPP Hours	# of RPP Workers
Male	1,427.50	9
Total	1,427.50	9

Table 8: Apprenticeship & On-The-Job Trainee Participation

Craft	# of Apprentices / OJT Trainees	Total Hours Worked	RPP Apprentices Hours	RPP Apprentices %	SIA RPP Apprentices Hours	SIA RPP Apprentices Hours %
Electrician	1	24.00				
Total	1	24.00		0%		

Table 9: Apprentice Participation by Race

Race	Hours	# of Workers
Not Specified	24.00	1
Total	24.00	1

Table 10: Apprentice Participation by Gender

Gender	Total Hours	# of Workers
Male	24.00	1
Total	24.00	1

Section 3 Participation

As shown in Table 11 below, the Section 3 inclusion achieved is 17% and 2% Targeted Section 3.

Contractor	Trade	On-Site Construction Hours				
		Total Hours Worked	Section 3 Worker Hours	% Section 3	Targeted Section 3 Worker Hours	% Targeted Section 3
AA Security	Teledata Installer	85.50	85.50	100%		
AK Carpentry LLC	Carpenter					
Blair Fire Protection, LLC	General Laborer	1.50				
Dynamic Contracting Services, LLC	General Laborer	2,210.50				
Fischer Companies, Inc.	General Laborer	50.25				
M R Window Solutions, LLC	General Laborer	427.50	427.50	100%		
Neumann Plumbing & Heating, Inc.	Plumber	120.00				
NSI Electrical Contractors, Inc.	Operator	287.00	24.00	8%		
R.D. Woods Co., Inc.	Carpentry	148.00	74.00	50%	74.00	50%
Skyrise Construction Group, LLC	Electrician	200.00				
Total Hours		3,530.25	611.00	17%	74.00	2%