

S.W. 1/4 SEC. 20, T. 7N., R. 22E.

361

W. McKinley

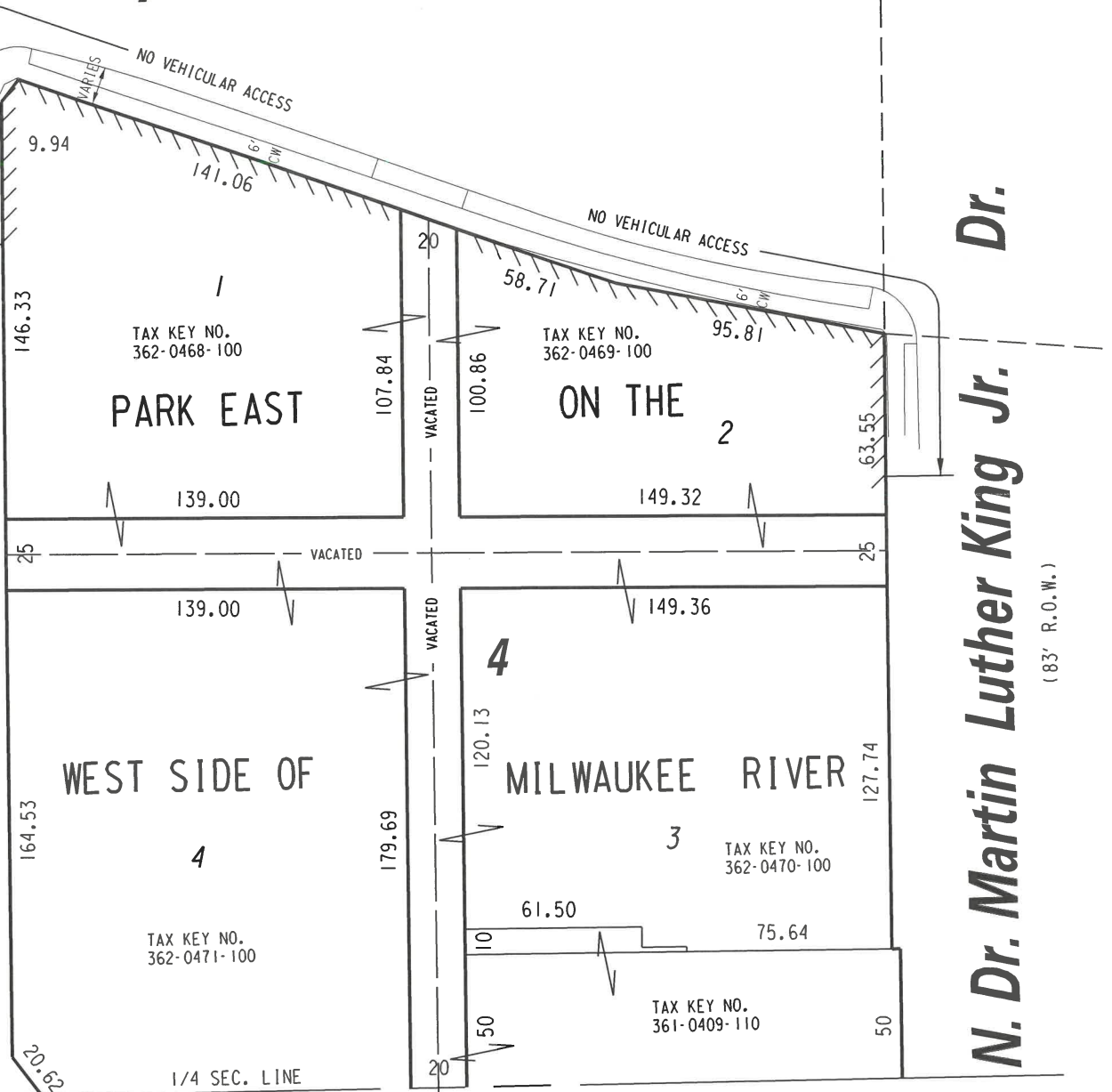
(R.O.W. VARIES)

Ave.

Ave.

(R.O.W. VARIES)

N. Vel R. Phillips




 PORTION OF NO VEHICULAR ACCESS RESTRICTION TO BE RELEASED

**FILE NO.**  
 INFRASTRUCTURE SERVICES DIVISION  
 MILWAUKEE, WISCONSIN

ASSIGNED TO: D. BEKELE  
 DRAWN BY: D.B.  
 PROJECT/GRANT NO.: WK52368048  
 APPROVED BY:

CH'K'D. BY: Y. MARTI  
 DATE: MAY. 08, 2024  
 SCALE: 1" = 60'

  
 CENTRAL DRAFTING & RECORDS MANAGER

  
 CITY ENGINEER