

WEST NASH ST.

WEST VIENNA AVE.

WEST MELVINA ST.

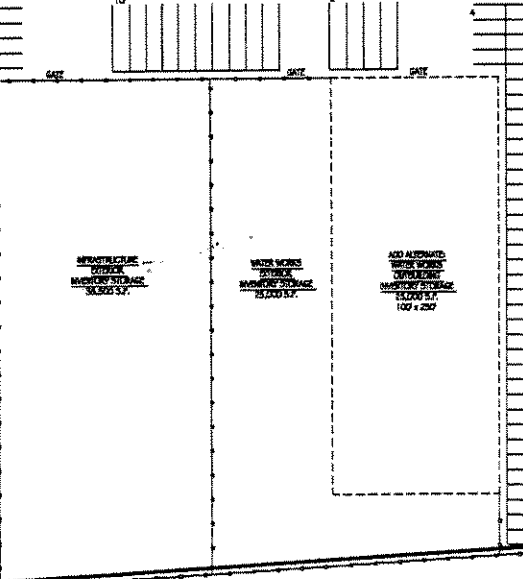
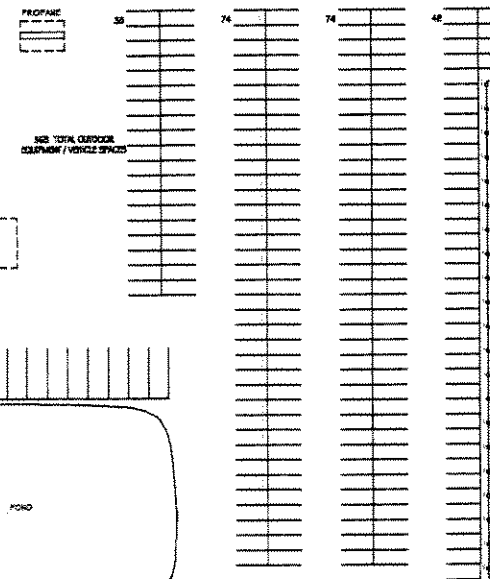
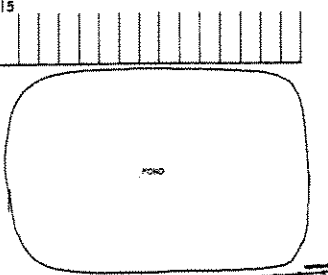
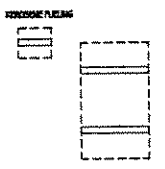
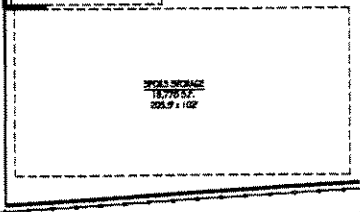
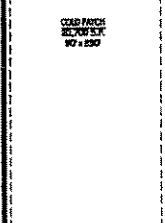
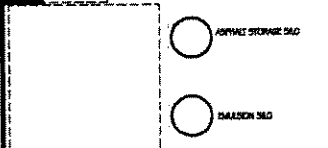
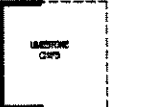
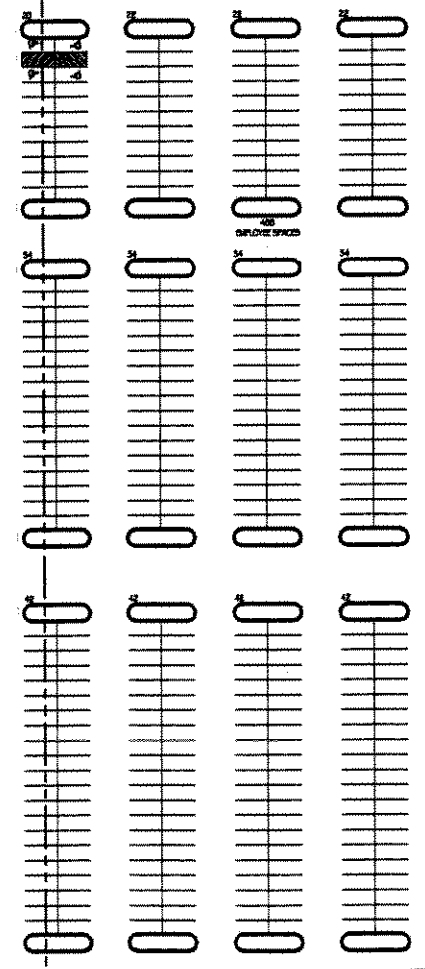
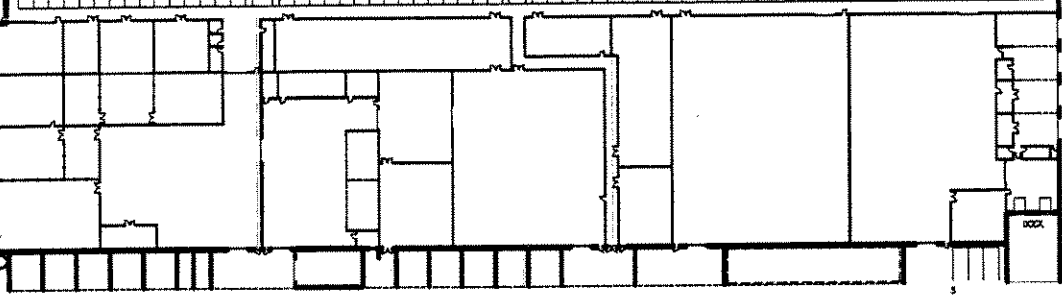
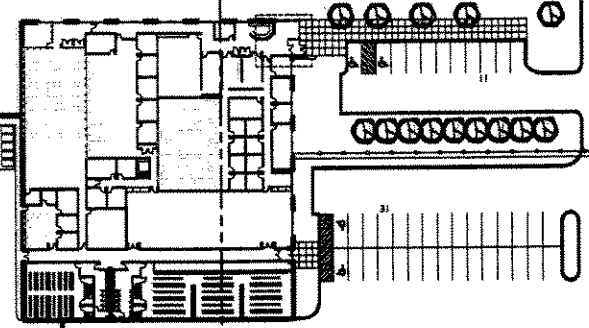
NORTH 35th STREET

1238.79'

897.45'

828.17'

1238.78'



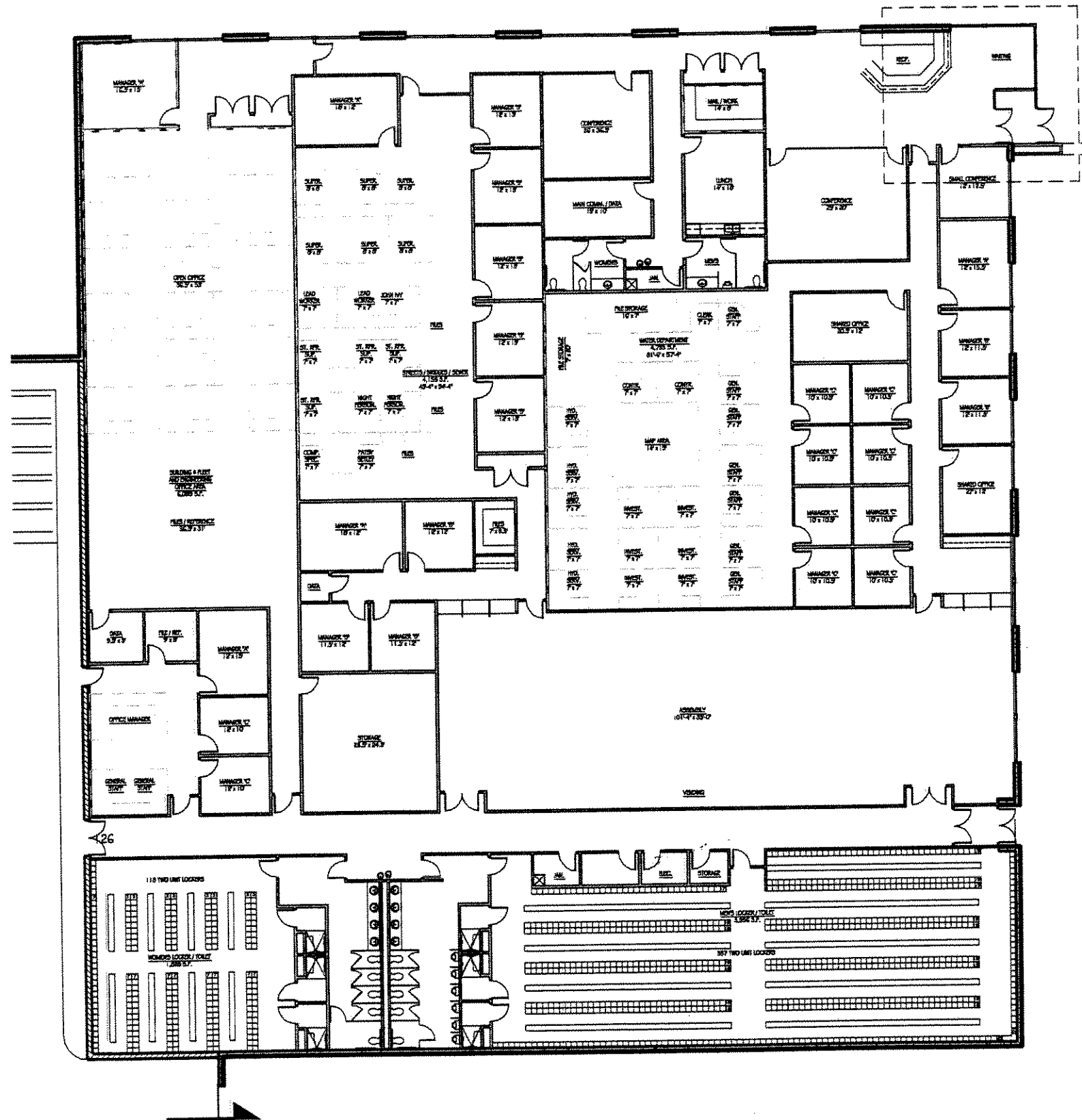
WATER STORAGE 18000 SQ. FT.

ADD ALTERNATE STORAGE 100 x 200

CITY OF MILWAUKEE - WATER & DPW OPERATIONS
TOWER SITE, NORTH 35TH STREET

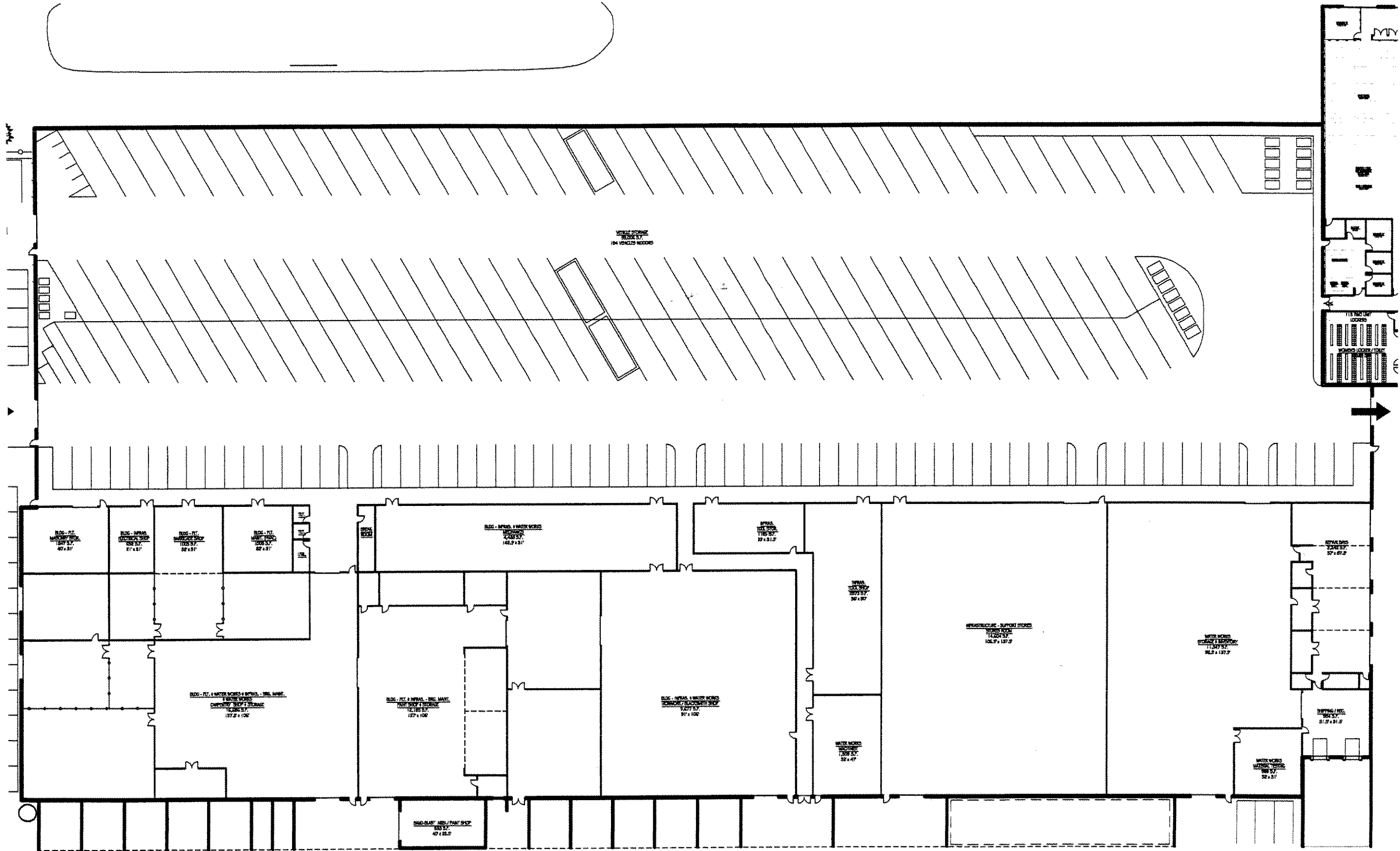
MILWAUKEE, WI
1" = 40' 0"
JULY 26, 2004





PROPOSED OFFICE AREA FLOOR PLAN
 CITY OF MILWAUKEE - WATER & DPW OPERATIONS
 TOWER SITE, NORTH 35TH STREET
 MILWAUKEE, WI
 1/8" = 1'-0"
 10/26/2011



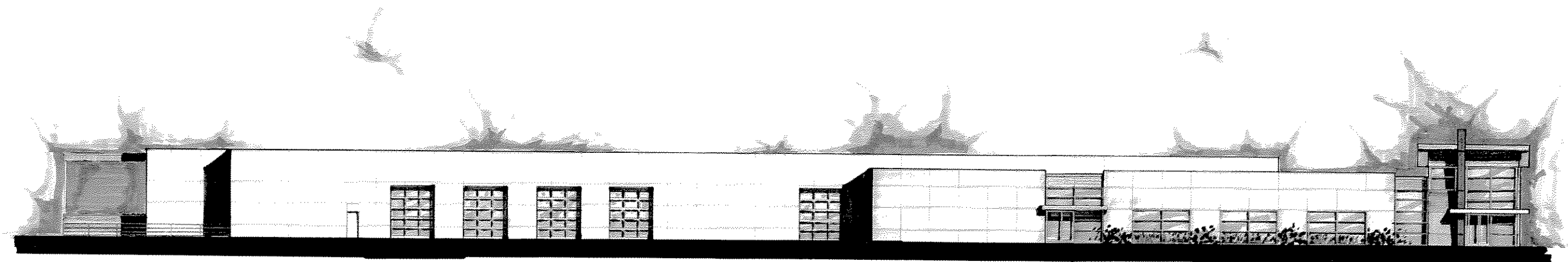


CITY OF MILWAUKEE - WATER & DPW OPERATIONS
 TOWER SITE, NORTH 35TH STREET

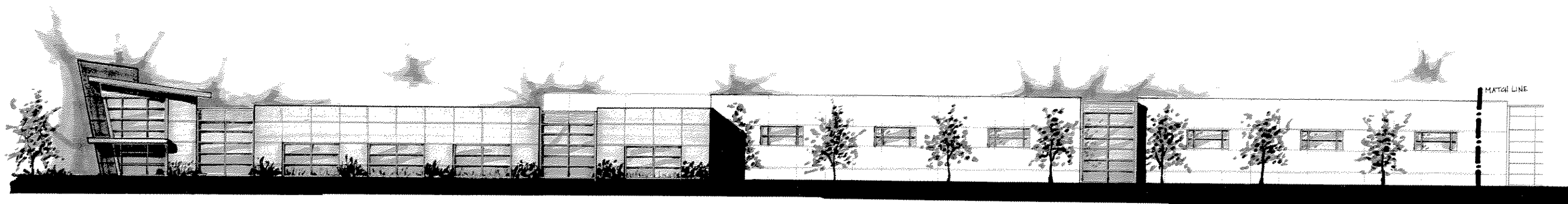
PROPOSED SHOP AREA FLOOR PLAN

MILWAUKEE, WI
 1/2" = 1'-0"
 JUNE 20, 2004

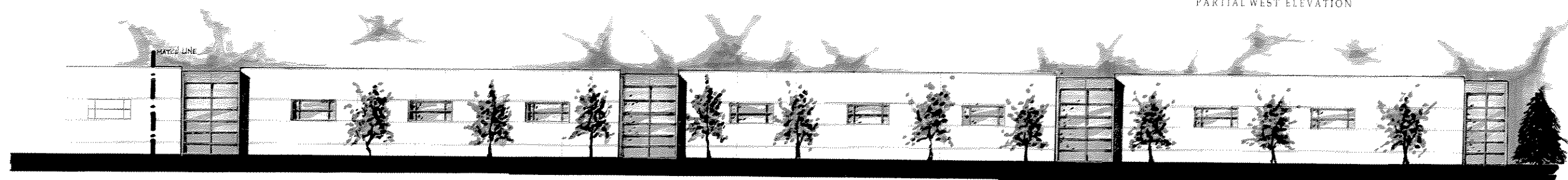




NORTH ELEVATION



PARTIAL WEST ELEVATION



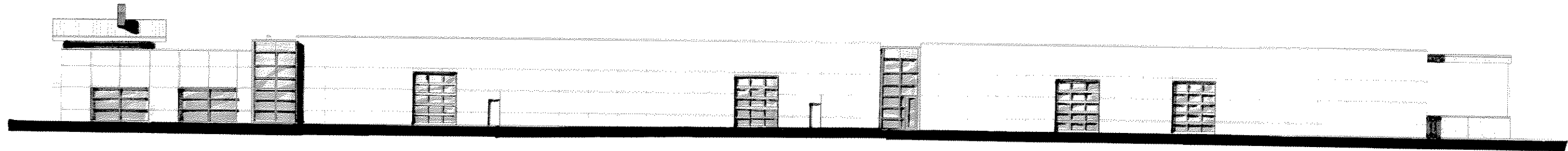
PARTIAL WEST ELEVATION

PROPOSED ELEVATIONS

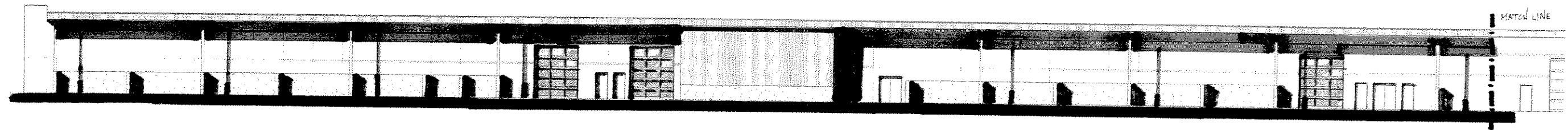
CITY OF MILWAUKEE - WATER & DPW OPERATIONS
TOWER SITE, NORTH 35TH STREET

MILWAUKEE, WI
1/32" = 1'-0"
JUNE 21, 2004

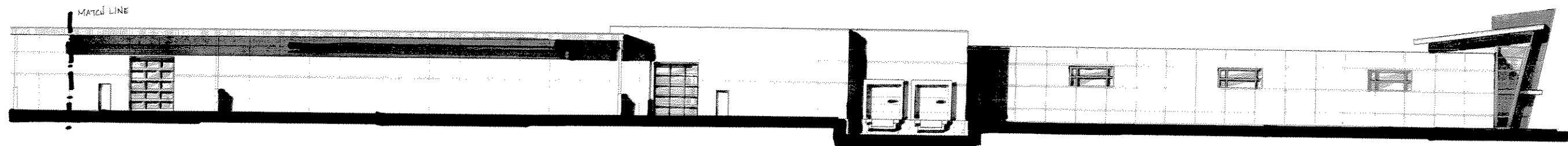




SOUTH ELEVATION



PARTIAL EAST ELEVATION



PARTIAL EAST ELEVATION

PROPOSED ELEVATIONS

CITY OF MILWAUKEE - WATER & DPW OPERATIONS
TOWER SITE, NORTH 35TH STREET

MILWAUKEE, WI

3/22 + 3/18
JUNE 29, 2014

