

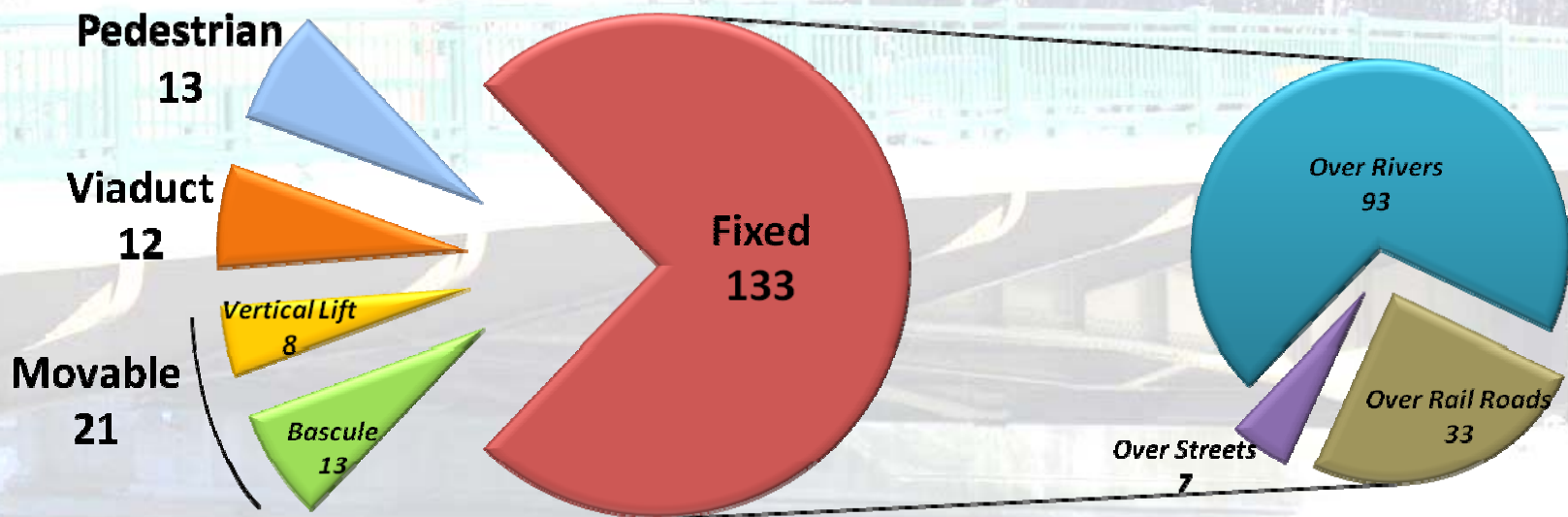
City of Milwaukee Department of Public Works

Major Bridge Program



City Bridge Inventory

- 179 City-owned and maintained bridges
- Relative comparison of bridge types:



Bridge Structure Inspection

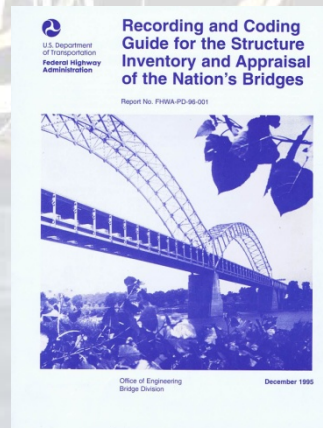
- In accordance with FHWA and WisDOT standards
- Conducted by DPW personnel
 - FHWA certified Bridge Inspectors
- Bridges inspected *every* 24 months, except:
 - Annually for:
 - Movable bridges
 - Structurally deficient bridges



Sufficiency Rating (SR)

- FHWA standard measures service condition
- Three separate group factors determine SR Rating
 - Structural adequacy (Deck, Superstructure, and Substructure)
 - Serviceability and functional obsolescence
 - Essentiality for public use
- Condition and function are rated to current standards (not what the bridge may have been built to)

FHWA Coding Guide



Sufficiency Rating (SR) Cont'd

- 100 percent would represent an entirely sufficient bridge; 0 is insufficient or deficient bridge
- Rating is not a quantitative measure of safe versus unsafe
- Example, a 50 year old bridge may be structurally adequate but deficient due to current roadway widths, standards, or clearance

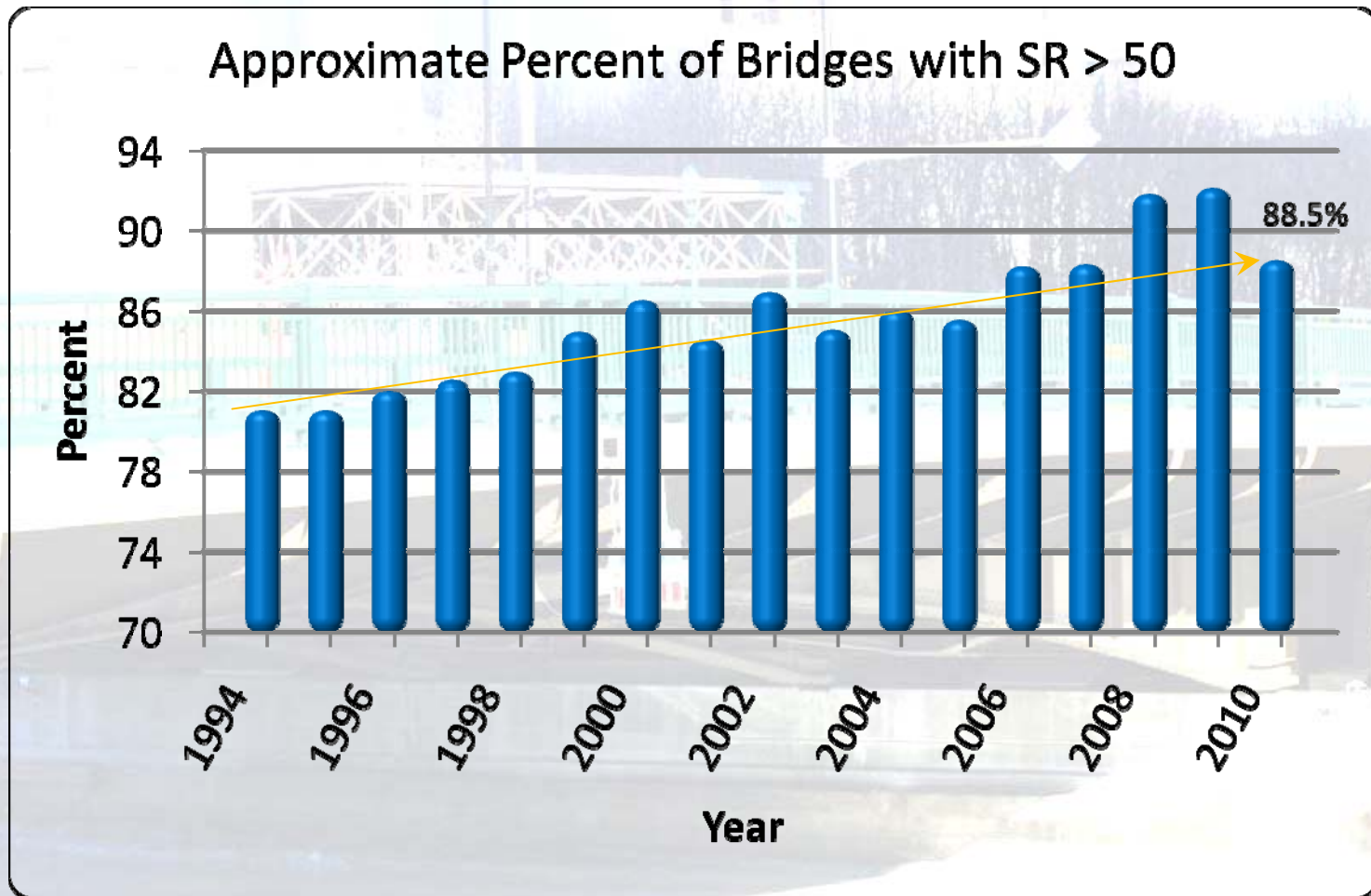


U.S. Department
of Transportation

**Federal Highway
Administration**

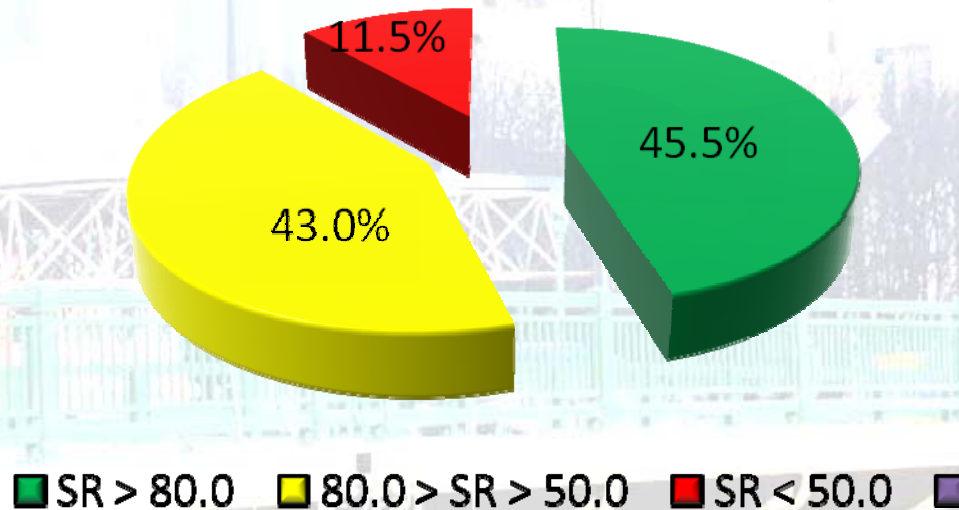
Milwaukee Bridge Performance

- SR of bridge inventory trending upwards



Milwaukee Bridge Performance

- Relative comparison of SR for city rated bridges, 2010



- Federal/State funding eligibility

- SR < 80.0 : Bridge eligible for rehabilitation
- SR < 50.0 : Bridge eligible for rehabilitation or replacement

Federal/State Program

- Available only for those bridges deemed as federally eligible
- Competitive application process for limited state-wide program dollars
- Applied for on a 3 year cycle
- Generally 80% Federal/State funded with 20% local share
- Project schedule generally established by limits on available funding

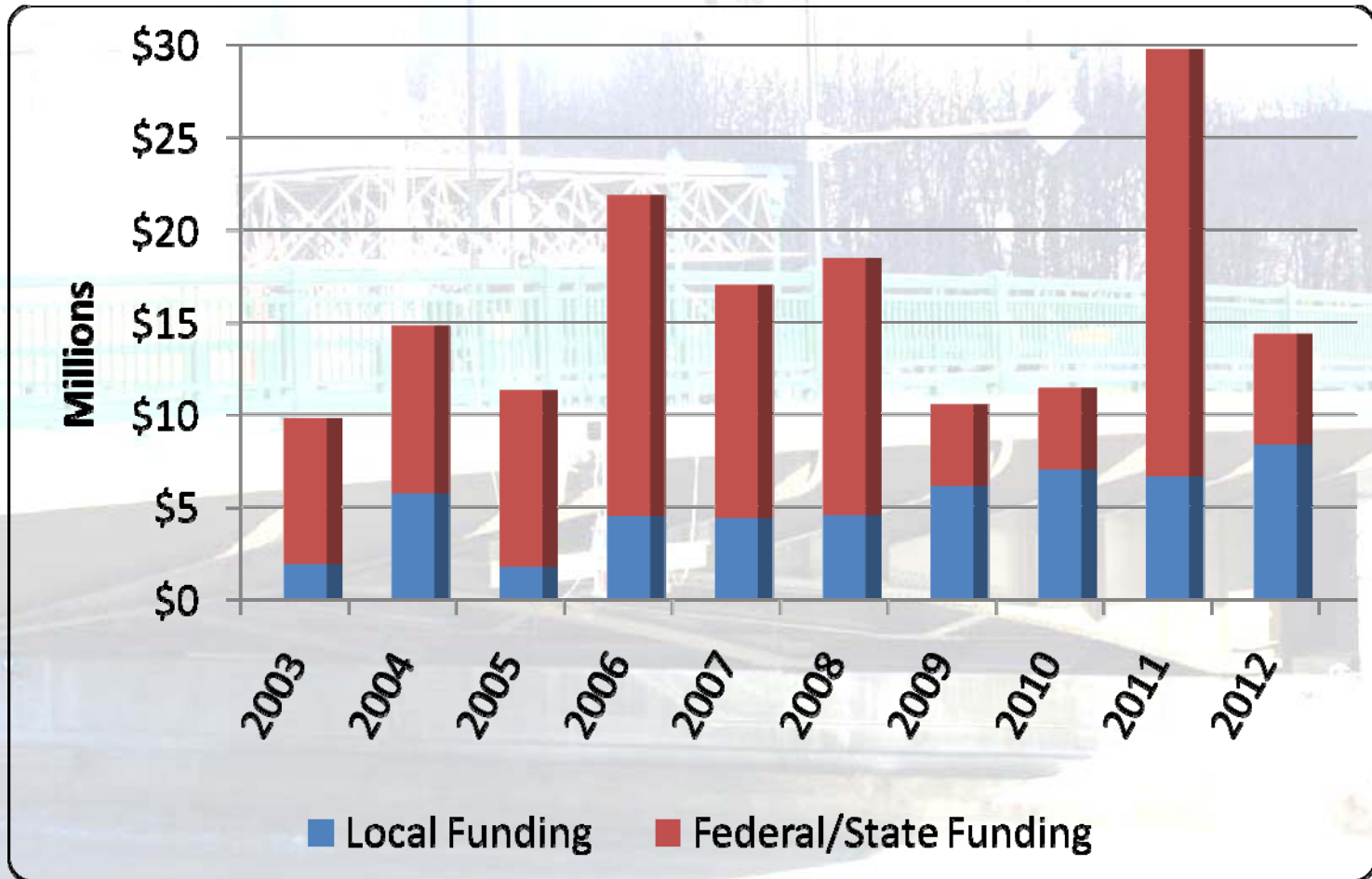


Local Program

- Bridges not deemed Federal/State eligible
- Bridges in which Federal/State funds not available or insufficient
- Maintenance work including structure repair, painting, mechanical upgrades, inspections, pre-engineering activities, etc.



Summary of Capital Bridge Program 2003-2012



Questions?

