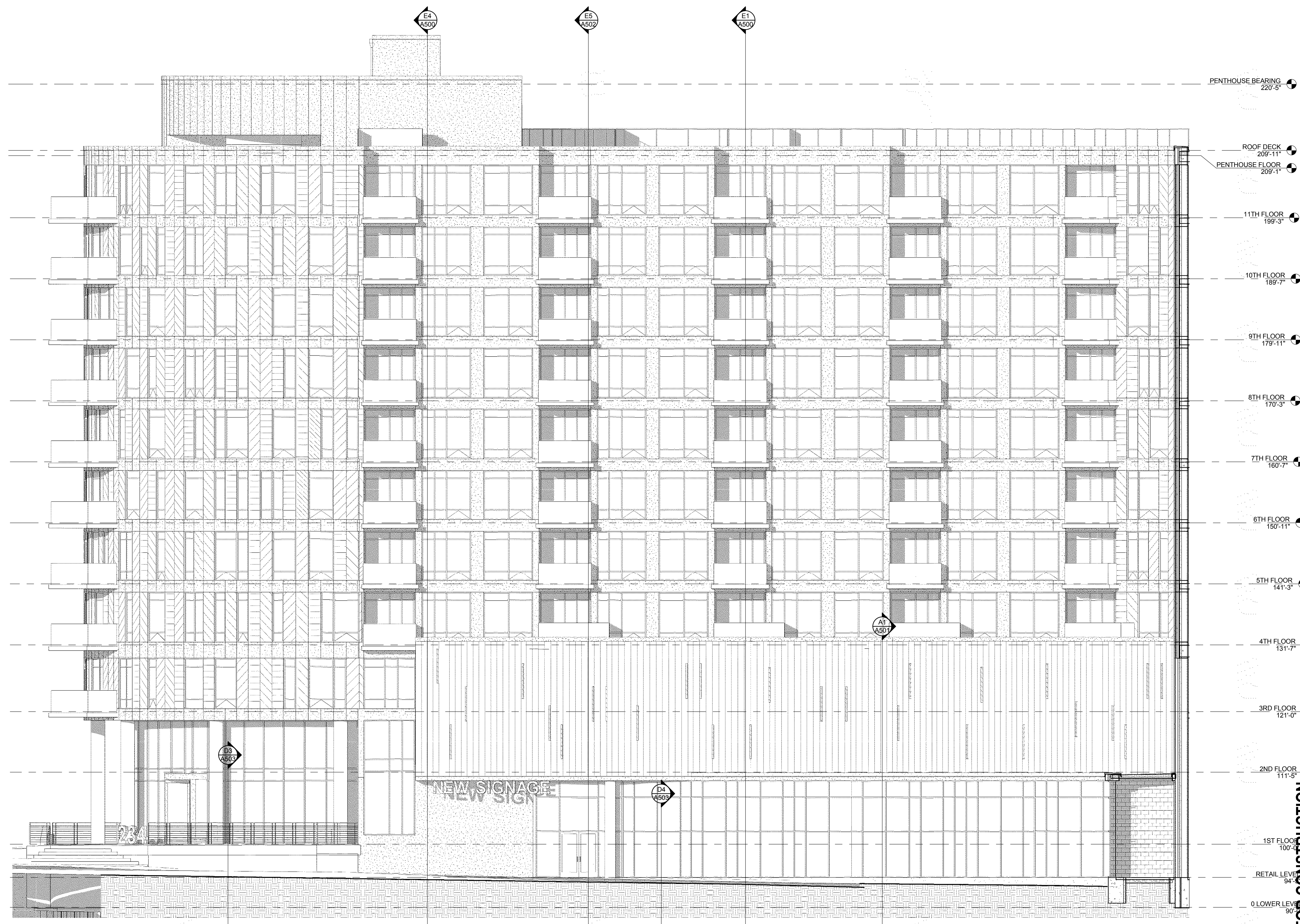


11/20/15 12:15:52 PM C:\PRA\Local\Project\Files\140254-01\234 S Water - central rev. A.dwg

8/22/2016 2:40:08 PM C:\PRA\Local\Project\Files\140254-01\234 S Water - Act.dwg



E3 WEST ELEVATION (ORIENTED TO APARTMENTS)
A401 1/8" = 1'-0"

KEYNOTE LEGEND - CONSTRUCTION TYPES

C1	LAV IN CEILING PANELS IN EXPOSED GRID SYSTEM SUSPENDED FROM STRUCTURE ABOVE
C2	5/8" GYP BOARD CEILING ON METAL SUSPENSION SYSTEM SUSPENDED FROM STRUCTURE ABOVE
C3	ACoustical FIBER ON 5/8" GYP BOARD CEILING PANEL SUSPENSION SYSTEM SUSPENDED FROM STRUCTURE ABOVE
C4	1" HIR RATED SWAY WALL CEILING WITH DESIGN 485 (S40101) ONE LAYER 5/8" TYPE 'X' GYP BOARD ON 3/4" STEEL SHAPING STUDS @ 24" OC WITH 1" TYPE 'X' GYP BOARD LINER PANEL @ CONCEALED FACE
C5	1/2" THICK FABRIC COVERED ACoustical PANELS DIRECT APPLIED TO ROOF DECK (SEE FIRE PROOFING)
C6	EXTERIOR SOFFIT DIRECT APPLIED EXTERIOR FINISH SYSTEM (EPS) ON GYP BOARD SHEATHING ON 1/2" GALV METAL FRAMING COLOR TO MATCH ADJACENT METAL PANELS (PROVIDE SOFFIT VENT)
C7	EXTERIOR SOFFIT 5/8" GYP BOARD ON 3/8" METAL SUPPORTS @ 16" OC DIAGONAL KICKERS @ 24" OC
C8	ALUMINUM WINDOW SYSTEM WITH LOW E INSULATING GLASS
C9	ALUMINUM STOREFRONT SYSTEM WITH LOW E INSULATING GLASS
C10	ALUMINUM ENTRANCE SYSTEM WITH TEMPERED INSULATING GLASS
C11	ALUMINUM CURTAIN WALL SYSTEM WITH INSULATING GLASS 1" INSULATED CERAMIC COATED SPANREL GLASS SATE 1" INSULATED PANEL
C12	GLAZED WALL SYSTEM WITH 1/2" TEMPERED GLASS BUTT GLAZED WALL/MULLION FLOOR & CEILING RECEIVERS
C13	METAL SCULPTURE
C14	METAL SCULPTURE
C15	METAL COUNTER LASHING ONE PIECE WEDGED IN PLACE METAL COUNTER LASHING IN SAW CUT JOINT (3/4" H X 1/2" DEEP) SECURE 1/4" LONG MOUNTING FLANGE IN PLACE WEDGES & SEAL IN BARRIER ROOFS/LAND
C16	METAL COUNTER LASHING TWO PIECE SWAP IN METAL COUNTER LASHING WITH SURFACE MOUNTED RECEIVERS WITH MECHANICAL FASTENERS @ 24" OC WITH PROTRUSION ANCHORS (SEE EXPOSED WATER HEADS)
C17	SPLASH BLOCK
C18	METAL FASCIA/RIP SYSTEM METAL FASCIA W/ RIP ATTACHED TO CONTINUOUS REGLET & NAIL TO FIRE RESISTANT BLOCKING
C19	METAL FASCIA/RIP SYSTEM METAL FASCIA W/ RIP ATTACHED TO CONTINUOUS REGLET & NAIL TO FIRE RESISTANT BLOCKING
C20	WINDOW WASHING WALL ANCHOR PROVIDE PREMOULDED PIPE BOOT TO ROOF
C21	WINDOW WASHING WALL ANCHOR
C22	SOFFIT VENT
C23	GLASS PATIO RAILING SYSTEM
C24	INTERIOR MASONRY FIRE BARRIER 8" CONCRETE BLOCK
C25	INTERIOR MASONRY FIRE BARRIER 8" REINFORCED CONCRETE WALL
C26	INTERIOR MASONRY FIRE BARRIER 10" CONCRETE BLOCK
C27	INTERIOR MASONRY FIRE BARRIER 10" CONCRETE WALL STC-48
C28	INTERIOR MASONRY FIRE BARRIER 12" CONCRETE BLOCK
C29	INTERIOR MASONRY FIRE BARRIER 12" REINFORCED CONCRETE WALL STC-48
C30	INTERIOR MASONRY FIRE BARRIER 12" REINFORCED CONCRETE WALL STC-48
C31	SINGLE PLY ROOFING SYSTEM FULLY ADHERED EPDM MEMBRANE ON 4" OF RIGID INSULATION ON VAPOR RESISTANT CONCRETE DECK. AVERAGE 9" VALUE R-15
C32	SINGLE PLY ROOFING SYSTEM FULLY ADHERED EPDM MEMBRANE ON 4" OF RIGID INSULATION ON VAPOR RESISTANT CONCRETE DECK. AVERAGE 9" VALUE R-15
C33	SINGLE PLY ROOFING SYSTEM FULLY ADHERED EPDM MEMBRANE ON 4" OF RIGID INSULATION ON VAPOR RESISTANT CONCRETE DECK. AVERAGE 9" VALUE R-15
C34	SINGLE PLY ROOFING SYSTEM FULLY ADHERED EPDM MEMBRANE ON 4" OF RIGID INSULATION ON VAPOR RESISTANT CONCRETE DECK. AVERAGE 9" VALUE R-15
C35	SINGLE PLY ROOFING SYSTEM FULLY ADHERED EPDM MEMBRANE ON 4" OF RIGID INSULATION ON VAPOR RESISTANT CONCRETE DECK. AVERAGE 9" VALUE R-15
C36	SINGLE PLY ROOFING SYSTEM FULLY ADHERED EPDM MEMBRANE ON 4" OF RIGID INSULATION ON VAPOR RESISTANT CONCRETE DECK. AVERAGE 9" VALUE R-15
C37	SINGLE PLY ROOFING SYSTEM FULLY ADHERED EPDM MEMBRANE ON 4" OF RIGID INSULATION ON VAPOR RESISTANT CONCRETE DECK. AVERAGE 9" VALUE R-15
C38	SINGLE PLY ROOFING SYSTEM FULLY ADHERED EPDM MEMBRANE ON 4" OF RIGID INSULATION ON VAPOR RESISTANT CONCRETE DECK. AVERAGE 9" VALUE R-15
C39	SINGLE PLY ROOFING SYSTEM FULLY ADHERED EPDM MEMBRANE ON 4" OF RIGID INSULATION ON VAPOR RESISTANT CONCRETE DECK. AVERAGE 9" VALUE R-15
C40	SINGLE PLY ROOFING SYSTEM FULLY ADHERED EPDM MEMBRANE ON 4" OF RIGID INSULATION ON VAPOR RESISTANT CONCRETE DECK. AVERAGE 9" VALUE R-15
C41	SINGLE PLY ROOFING SYSTEM FULLY ADHERED EPDM MEMBRANE ON 4" OF RIGID INSULATION ON VAPOR RESISTANT CONCRETE DECK. AVERAGE 9" VALUE R-15
C42	SINGLE PLY ROOFING SYSTEM FULLY ADHERED EPDM MEMBRANE ON 4" OF RIGID INSULATION ON VAPOR RESISTANT CONCRETE DECK. AVERAGE 9" VALUE R-15
C43	SINGLE PLY ROOFING SYSTEM FULLY ADHERED EPDM MEMBRANE ON 4" OF RIGID INSULATION ON VAPOR RESISTANT CONCRETE DECK. AVERAGE 9" VALUE R-15
C44	SINGLE PLY ROOFING SYSTEM FULLY ADHERED EPDM MEMBRANE ON 4" OF RIGID INSULATION ON VAPOR RESISTANT CONCRETE DECK. AVERAGE 9" VALUE R-15
C45	SINGLE PLY ROOFING SYSTEM FULLY ADHERED EPDM MEMBRANE ON 4" OF RIGID INSULATION ON VAPOR RESISTANT CONCRETE DECK. AVERAGE 9" VALUE R-15
C46	SINGLE PLY ROOFING SYSTEM FULLY ADHERED EPDM MEMBRANE ON 4" OF RIGID INSULATION ON VAPOR RESISTANT CONCRETE DECK. AVERAGE 9" VALUE R-15
C47	SINGLE PLY ROOFING SYSTEM FULLY ADHERED EPDM MEMBRANE ON 4" OF RIGID INSULATION ON VAPOR RESISTANT CONCRETE DECK. AVERAGE 9" VALUE R-15
C48	SINGLE PLY ROOFING SYSTEM FULLY ADHERED EPDM MEMBRANE ON 4" OF RIGID INSULATION ON VAPOR RESISTANT CONCRETE DECK. AVERAGE 9" VALUE R-15
C49	SINGLE PLY ROOFING SYSTEM FULLY ADHERED EPDM MEMBRANE ON 4" OF RIGID INSULATION ON VAPOR RESISTANT CONCRETE DECK. AVERAGE 9" VALUE R-15
C50	SINGLE PLY ROOFING SYSTEM FULLY ADHERED EPDM MEMBRANE ON 4" OF RIGID INSULATION ON VAPOR RESISTANT CONCRETE DECK. AVERAGE 9" VALUE R-15

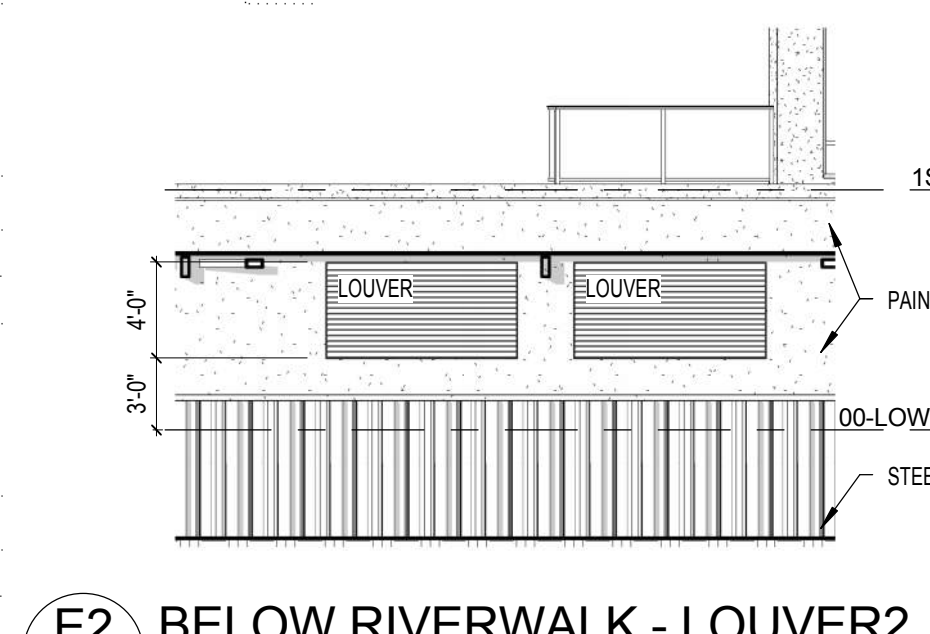
EXTERIOR FINISH PATTERNS

CP	COMPOSITE METAL PANEL - BLACK
CP*	COMPOSITE METAL PANEL - TERRA DI TOSCA
MP	COMPOSITE METAL PANEL - TERRA DI TOSCA
MP*	COMPOSITE METAL PANEL - TERRA DI TOSCA
FLP	FLAT LOCK METAL PANEL - BLACK

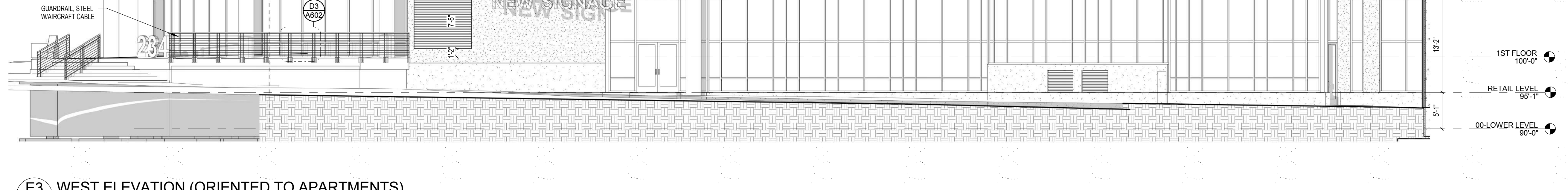
EXTERIOR ELEVATIONS - GENERAL NOTES

- SEALANT COLORS TO MATCH ADJACENT FINISHED SURFACES
- ALL GLAZING CLEAR VISION GLASS
- ALL MECHANICAL EQUIPMENT/LOWERS/VENTS/ETC TO BE PAINTED BLACK TO MATCH THE WALL PANELS UNLESS OTHERWISE NOTED

E1 BELOW RIVERWALK - LOUVER1
A401 1/8" = 1'-0"



E2 BELOW RIVERWALK - LOUVER2
A401 1/8" = 1'-0"



E3 WEST ELEVATION (ORIENTED TO APARTMENTS)
A401 1/8" = 1'-0"

1/10/2016 12:31:13 PM C:\PRA\BAC\Local\Project Files\140254-01\234 S Water\external\m_jiang\us.ctb



E2 NORTH ELEVATION
1/8" = 1'-0"

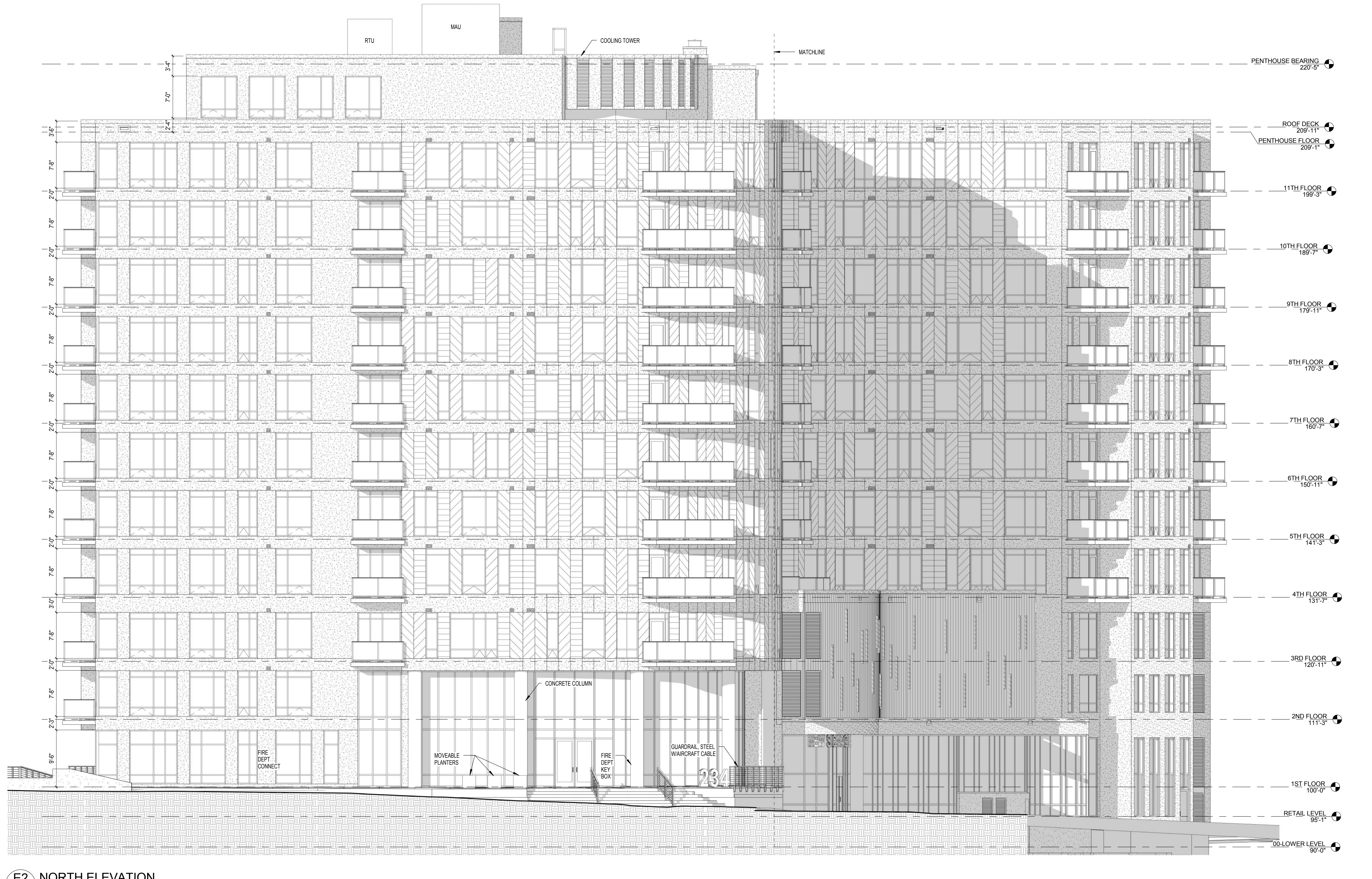
414 339 3000
608 240 9900
2315 cornedale drive suite 2000 madison, wisconsin 53718
1015 fountainhead suite 3 jacksonville, florida 32206
www.praich.com
prai
PLUNKETT RAISCH
ARCHITECTS, LLP
AS APPROVED
234 S. Water, LLC
234 S. WATER STREET
MILWAUKEE, WI
Revisions
Drawn By: Author
Date: 06 NOV 15
Job No.: 140254-01
Sheet No.: A405

8/22/2016 3:02:43 PM C:\PRA\BAC\Local\Project Files\140254-01\234 S Water\Acta_alang\us.ctb

KEYNOTE LEGEND - CONSTRUCTION TYPES	
C1	LAY IN CEILING PANELS IN EXPOSED GRID SYSTEM SUSPENDED FROM STRUCTURE ABOVE.
C2	5/8" GYP BOARD CEILING ON METAL SUSPENSION SYSTEM SUSPENDED FROM STRUCTURE ABOVE.
C3	ACOUSTICAL FIBER ON 5/8" GYP BOARD CEILING ON METAL SUSPENSION SYSTEM SUSPENDED FROM STRUCTURE ABOVE.
C4	1/4" RATED SWAYT WALL CEILING WITH DESIGN 465 FSH (SH407) ONE LAYER 5/8" TYPE X GYP BOARD ON 3/4" STEEL SWAYT WALL STUDS @ 24" OC WITH 1" TYPE X GYP BOARD UNDER PANEL & CONCEALED FACE.
C5	1/2" THICK FIBRE COVERED ACOUSTICAL PANELS DIRECT APPLIED TO ROOF DECK BELOW FIRE PROOFING.
C12	EXTERIOR SOFFIT DIRECT APPLIED EXTERIOR FINISH SYSTEM (EPS) ON GYPSUM SHEATHING ON 2 1/2" GALV METAL FRAMING COLOR TO MATCH ADJACENT METAL PANELS FROM SOFFIT VIEW.
C16	INTERIOR SOFFIT 5/8" GYP BOARD ON 3 1/2" METAL SUPPORTS @ 16" OC W/ANGULAR KICKERS @ 24" OC.
E1	ALUMINUM WINDOW SYSTEM WITH LOW E INSULATING GLASS.
E2	ALUMINUM STOREFRONT SYSTEM WITH LOW E INSULATING GLASS.
E3	ALUMINUM ENTRANCE SYSTEM WITH THERMO INSULATING GLASS.
E4	ALUMINUM CURTAIN WALL SYSTEM WITH INSULATING GLASS 1" INSULATED CERAMIC COATED SPANDREL GLASS UNITS - INSULATED PANEL.
E11	GLAZED WALL SYSTEM WITH 1/2" THERMO INSULATING GLASS BUTT GLAZED W/ALUMINUM FLOOR & CEILING RECEIVERS.
G1	METAL SCULPTURE.
G8	METAL COUNTERFLASHING ONE PIECE METAL IN PLACE METAL COUNTERFLASHING IN SWAY CUT JOINT (3/4" X 1/2" DEEP) SECURE 1/4" LONG MOUNTING FLANGE, IN PLACE WEDGES & SEAL W/ BARRIER ROD/GRANT.
G9	METAL COUNTERFLASHING TWO PIECE SWAYT METAL COUNTERFLASHING WITH SURFACE MOUNTED RECEIVER WITH MECHANICAL FASTENERS @ 24" OC WITH PROTRUDING ANCHORS @ EXPOSED FASTENER HEADS.
G17	SPLASH BLOCK.
G18	METAL FACEDORIP SYSTEM METAL FACEDORIP ATTACHED VIA CONTINUOUS REGLET & NAILED TO FIRE RESISTANT BLOCKING.
G19	PENKON FLASHING ROOF ANCHOR, PROVIDE PREMOULDED PIPE BOOT TO ROOF.
G20	WINDOW WASHING WALL ANCHOR.
G21	SOFFIT EIGHT.
G8	GLASS RATIO WALLING SYSTEM.
M8	INTERIOR MASONRY FIRE BARRIER, 8" CONCRETE BLOCK.
M10	INTERIOR MASONRY FIRE BARRIER, 8" REINFORCED CONCRETE WALL.
M12	INTERIOR MASONRY FIRE BARRIER, 12" CONCRETE BLOCK.
M13	INTERIOR MASONRY FIRE BARRIER, 12" CONCRETE WALL, STC-48.
M14	INTERIOR MASONRY FIRE BARRIER, 12" REINFORCED CONCRETE WALL, STC-48.
M15	INTERIOR MASONRY FIRE BARRIER, 12" REINFORCED CONCRETE WALL, STC-48.
R1	SINGLE PLY ROOFING SYSTEM FULLY ADHERED EPDM MEMBRANE ON 4" OF RIGID INSULATION ON VAPOR RETARDER ON CONCRETE DECK. AVERAGE R VALUE R-5.
R2	SINGLE PLY ROOFING SYSTEM FULLY ADHERED EPDM MEMBRANE ON 4" OF RIGID INSULATION ON VAPOR RETARDER ON CONCRETE DECK. AVERAGE R VALUE R-5.
R3	SINGLE PLY ROOFING SYSTEM FULLY ADHERED EPDM MEMBRANE ON 4" OF RIGID INSULATION ON VAPOR RETARDER ON CONCRETE DECK. PROVIDE 2X2 MASONRY DECKLE ON ADJUSTABLE SUPPORTS. PROVIDE 1/4" X 1/4" GALV METAL MESH @ ALL LOCATIONS BETWEEN DRAINAGE LANE & STRUCTURE (TO PREVENT ANIMAL NESTING). NEW BOTTOM EDGE TOWARD EPDM. AVERAGE R VALUE R-5.
R4	SINGLE PLY ROOFING SYSTEM FULLY ADHERED EPDM MEMBRANE ON 4" OF RIGID INSULATION ON VAPOR RETARDER ON CONCRETE DECK. PROVIDE 2X2 MASONRY DECKLE ON ADJUSTABLE SUPPORTS. PROVIDE 1/4" X 1/4" GALV METAL MESH @ ALL LOCATIONS BETWEEN DRAINAGE LANE & STRUCTURE (TO PREVENT ANIMAL NESTING). NEW BOTTOM EDGE TOWARD EPDM. AVERAGE R VALUE R-5.
S1	IF REINFORCED CONCRETE SLAB ON VAPOR BARRIER ON DRAINAGE FILL.
S18	IF REINFORCED CONCRETE SLAB ON VAPOR BARRIER ON DRAINAGE FILL.
S28	MINI REINFORCED CONCRETE SLAB ON 4" RIGID INSULATION ON DRAINAGE MAT ON WATERPROOFING MEMBRANE ON CAST IN PLACE REINFORCED CONCRETE STRUCTURE. 2 HR RATED.
S4	IF CAST IN PLACE REINFORCED CONCRETE ON METAL DECK.
S4	IF CAST IN PLACE REINFORCED CONCRETE STRUCTURE.
S4	IF CAST IN PLACE REINFORCED CONCRETE STRUCTURE FOR BALCONY. SLOPE CONCRETE 1" AWAY FROM BALCONY FACE. PROVIDE DRIP EDGE @ BOTTOM OF LEADING EDGES.
S9	CLIMATE BARRIER MEMBRANE IN WALLING ON PRESSURE TREATED 2X FRAMING ON STEEL FRAME ON PILES OR CONCRETE FOUNDATION WALLS.
S10	IF CAST IN PLACE REINFORCED CONCRETE STRUCTURE WITH FINISH CARBON PROVIDE WATERPROOF SURFACE MEMBRANE. STC-48. ACUSTICAL FINISHING UNDER CARPET & ACOUSTICAL MAT UNDER HARD SURFACES WILL BE REQUIRED TO MEET MINIMUM R-REQUIRED OF 5.

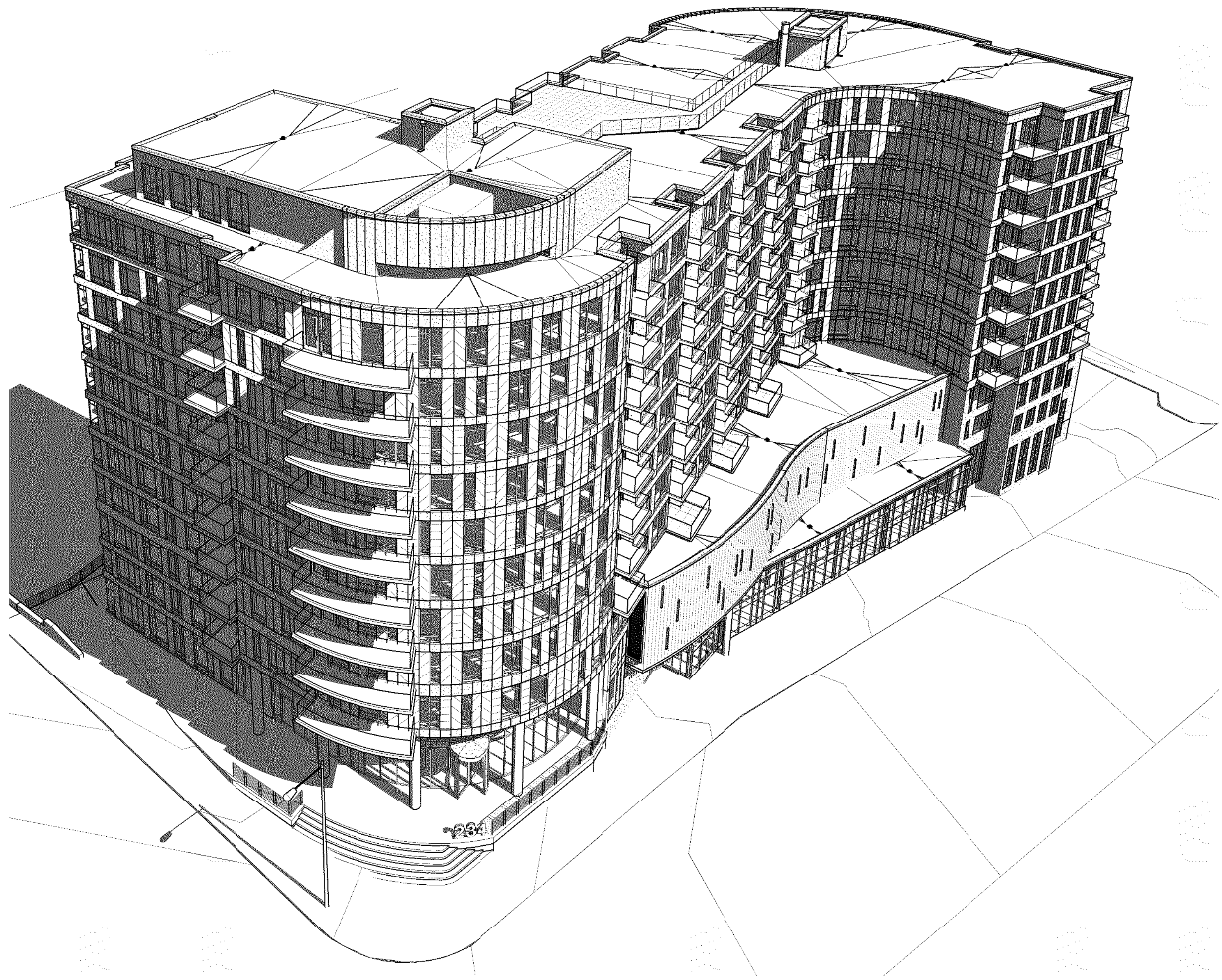
EXTERIOR FINISH PATTERNS	
CFB	COMPOSITE METAL PANEL BLACK
CFD	COMPOSITE METAL PANEL TERRA DI TOCCA
CFE	COMPOSITE METAL PANEL TERRA COTTA
CFG	COMPOSITE METAL PANEL TERRA DI SENNA
FLD	FLAT LOOK METAL PANEL BLACK

EXTERIOR ELEVATIONS - GENERAL NOTES	
A	SEALANT COLORS TO MATCH ADJACENT FINISHED SURFACES.
B	ALL GLAZING CLEAR VISION GLASS.
C	ALL MECHANICAL EQUIPMENT ENCLOSURES TO BE PAINTED BLACK TO MATCH THE WALL PANELS UNLESS NOTED OTHERWISE.

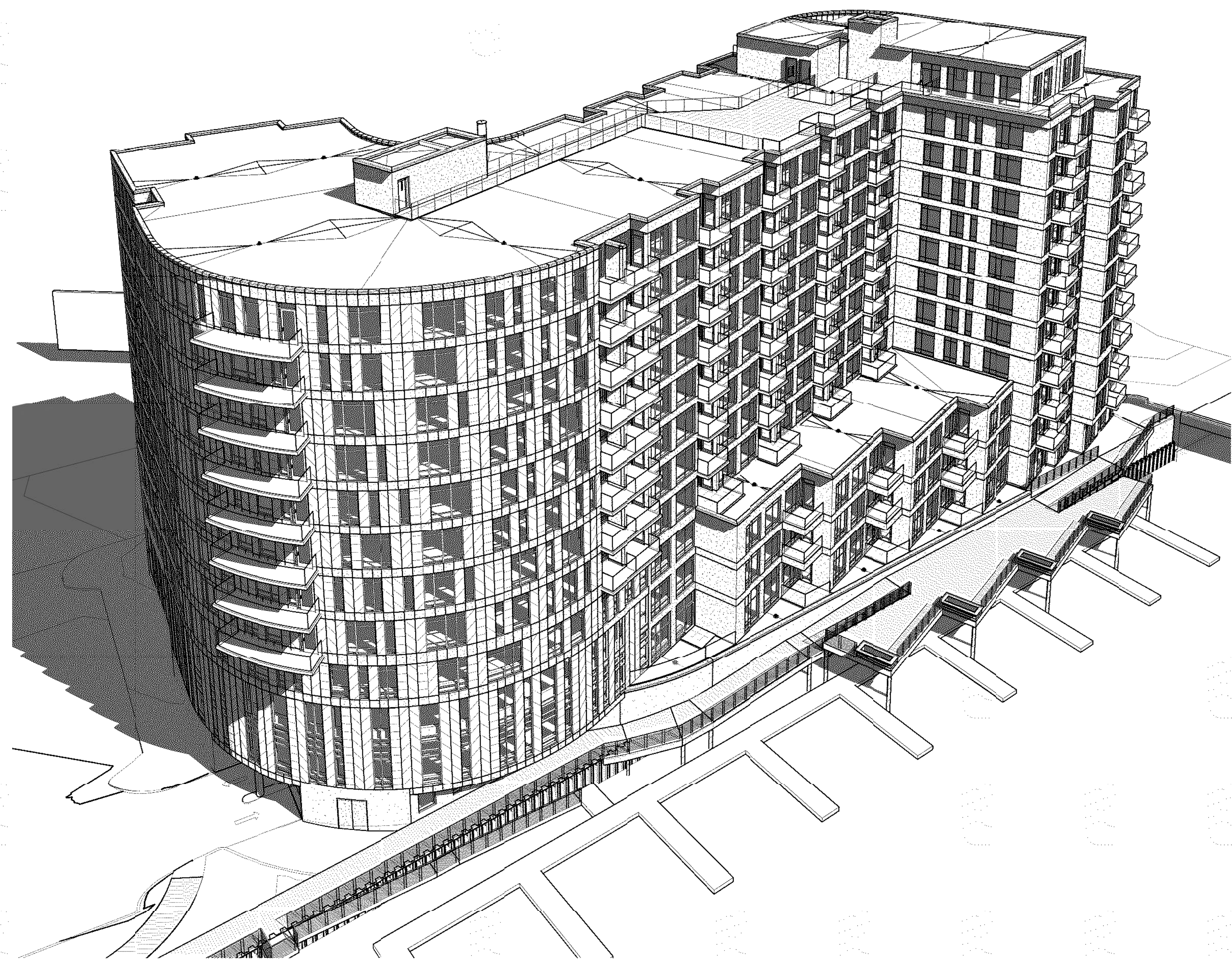


E2 NORTH ELEVATION
1/8" = 1'-0"

414 339 3000
608 240 9900
2315 cornedale drive suite 2000 madison, wisconsin 53718
1015 fountainhead suite 3 jacksonville, florida 32206
www.praich.com
prai
PLUNKETT RAISCH
ARCHITECTS, LLP
AS PROPOSED
LCM Funds 38 Harbor View, LLC.
234 S. WATER STREET
MILWAUKEE, WI
Revisions
OB-1 08-30-16
Drawn By: AML/MB
Date: 24 JUNE 16
Job No.: 140254-01
Sheet No.: A405



C1 BIRDSEYE PERSPECTIVE FROM PITTSBURGH AVE.
A410



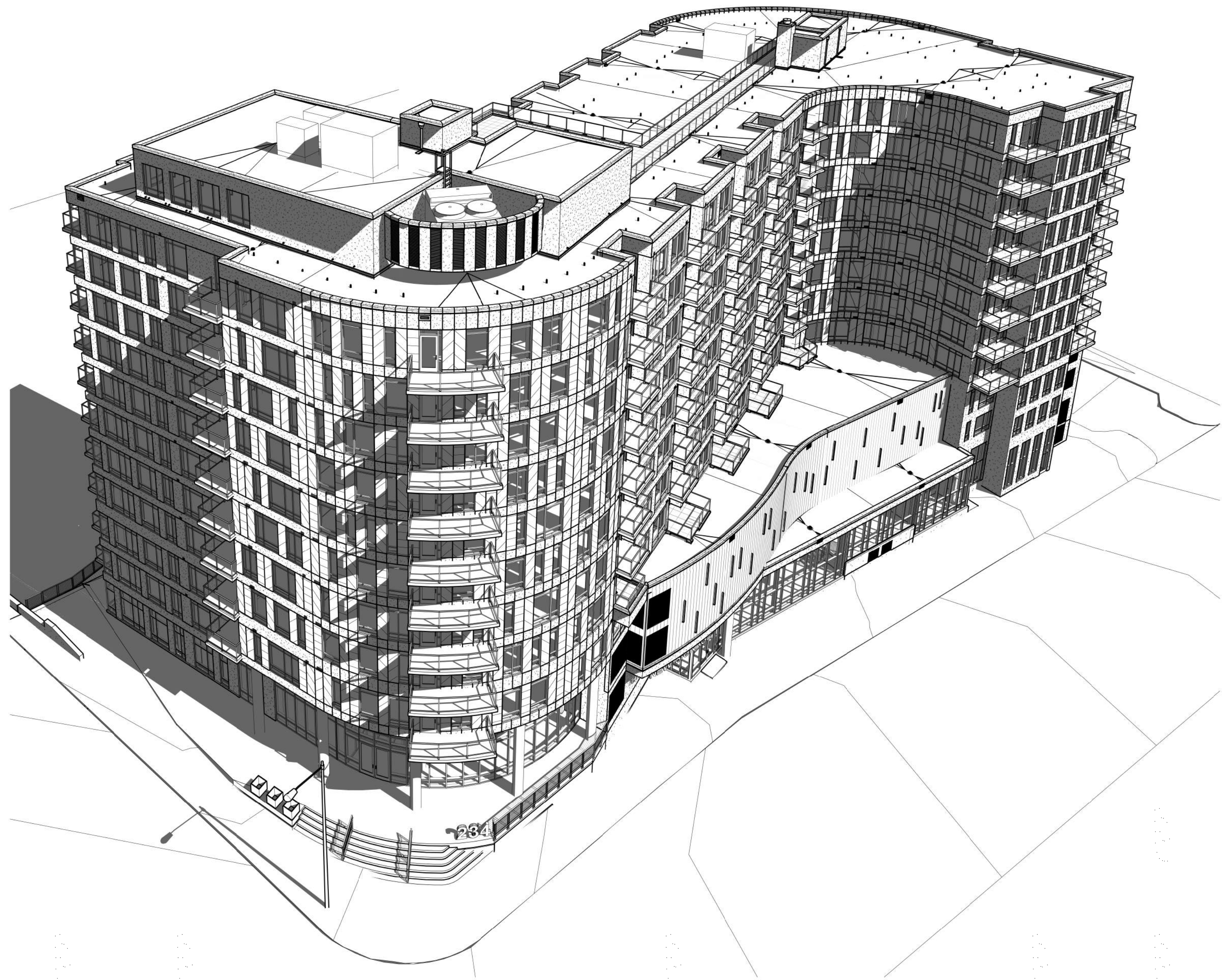
C4 BIRDSEYE PERSPECTIVE FROM MILWAUKEE RIVER
A410



E1 PERSPECTIVE VIEW FROM PITTSBURGH AVE.
A410



E3 PERSPECTIVE VIEW FROM WATER ST.
A410



C1 BIRDSEYE PERSPECTIVE FROM PITTSBURGH AVE.
A410



C4 BIRDSEYE PERSPECTIVE FROM MILWAUKEE RIVER
A410



E1 PERSPECTIVE VIEW FROM PITTSBURGH AVE.
A410



E3 PERSPECTIVE VIEW FROM WATER ST.
A410



E5 PERSPECTIVE VIEW FROM RIVER
A410

11/30/2015 12:34:35 PM C:\PRA\BAC\Local\Project Files\140254\01_234 S. Water\central\rev_01.dwg

8/20/2016 3:05:52 PM C:\PRA\BAC\Local\Project Files\140254_234 S. Water_Arch_Architect

NOT FOR CONSTRUCTION
© Plunkett Rainsch Architects, LLP

pro
 PLUNKETT RAINSCH
 ARCHITECTS, LLP
 intelligent design. inspired results. | www.praarch.com
 200 north water street | milwaukee, wisconsin 53204 | 414 337 2900
 2315 crossroads drive | suite 2000 | madison, wisconsin 53718 | 608 246 9000
 1015 florida road | suite 3 | orlando, florida 32826 | 407 344 3010

AS APPROVED
 234 S. Water, LLC
 234 S. WATER STREET
 MILWAUKEE, WI

Revisions
Drawn By: AML
Date: 06 NOV 15
Job No.: 140254-01
Sheet No.: A410

NOT FOR CONSTRUCTION
© Plunkett Rainsch Architects, LLP

pro
 PLUNKETT RAINSCH
 ARCHITECTS, LLP
 intelligent design. inspired results. | www.praarch.com
 200 north water street | milwaukee, wisconsin 53204 | 414 337 2900
 2315 crossroads drive | suite 2000 | madison, wisconsin 53718 | 608 246 9000
 1015 florida road | suite 3 | orlando, florida 32826 | 407 344 3010

AS PROPOSED
 LCM Funds 38 Harbor View, LLC.
 234 S. WATER STREET
 MILWAUKEE, WI

Revisions
Drawn By: AML
Date: 24 JUNE 16
Job No.: 140254-01
Sheet No.: A410