

2020



Legislative Reference Bureau

www.milwaukee.gov/lrb



ELECTION COMMISSION

2020 Proposed Plan and Executive Budget Review

Prepared by: Teodros W. Medhin, Ph.D., Legislative Research Supervisor

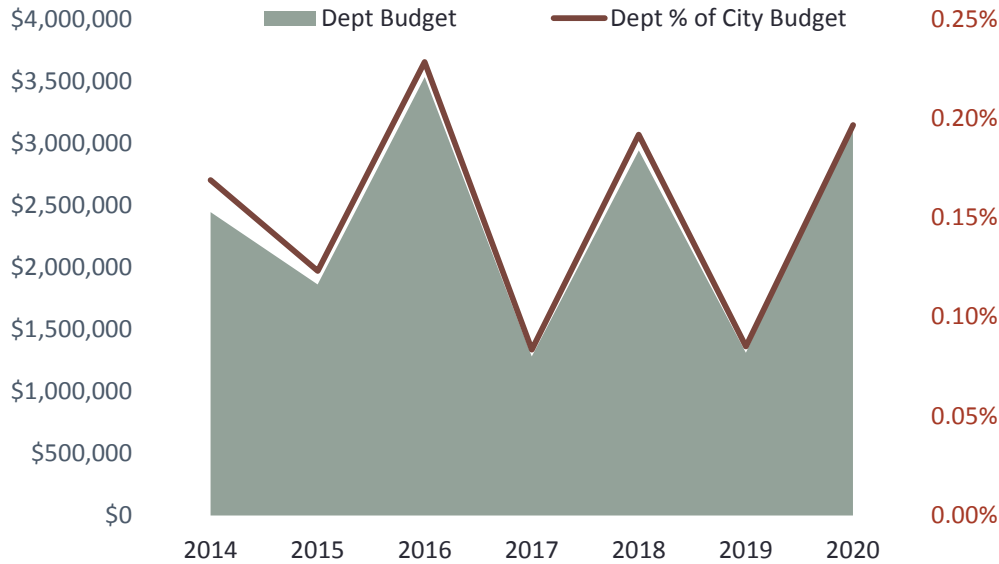
Budget Hearing: 1:30 pm on Tuesday, October 15, 2019



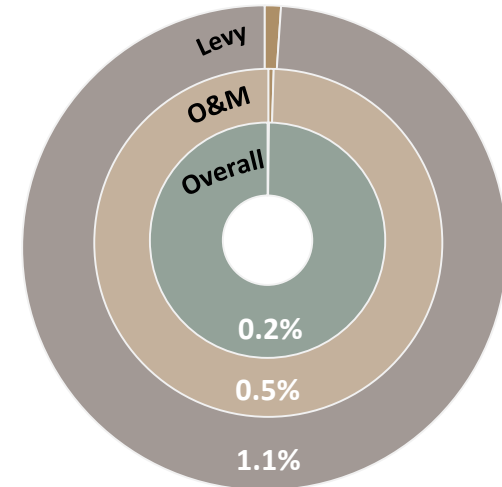
\$3,162,982
Proposed 2020 Budget

\$1,851,610
Change in Proposed Budget

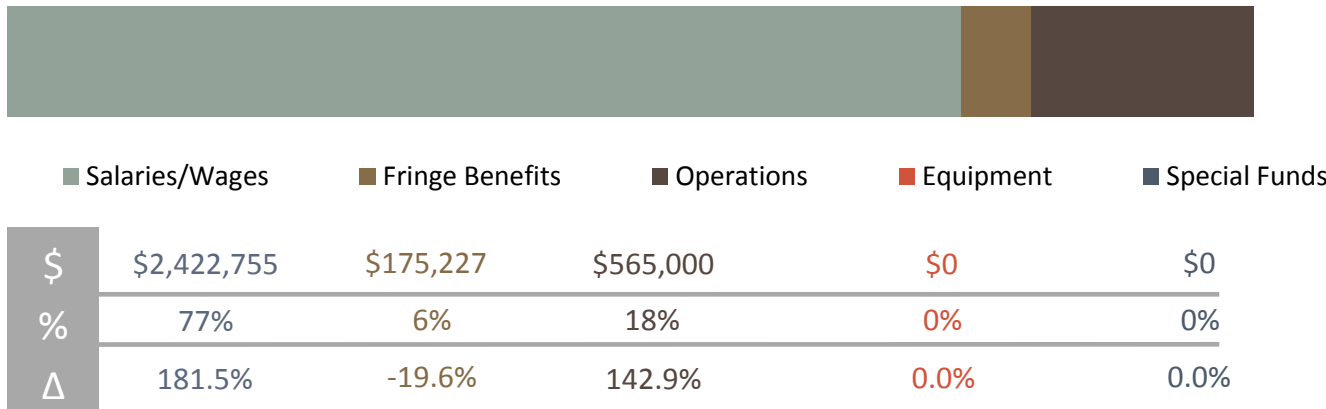
141.2%
% Change in Proposed Budget



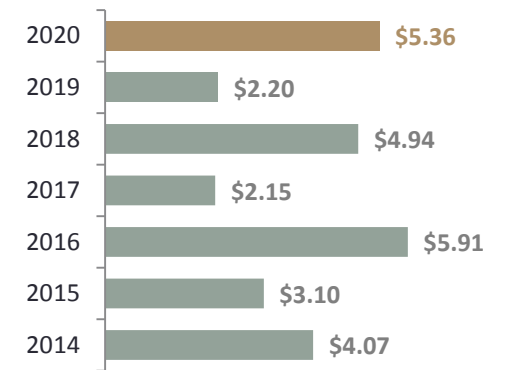
Departmental Budget Impact



Departmental Budget Appropriation Category



Budget per Capita



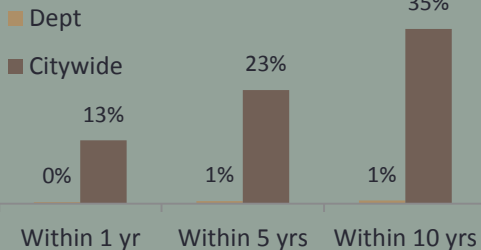
\$310,000

Number of registered voters in the city.

190

Number of polling locations in Milwaukee.

Retirement Eligible



1014

Change in Positions

66.8%

% Change in Positions

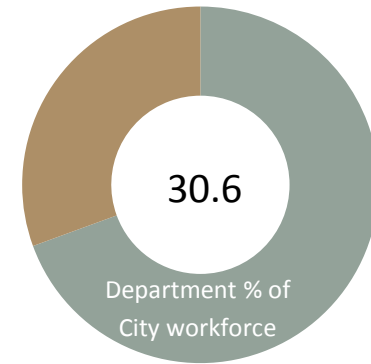
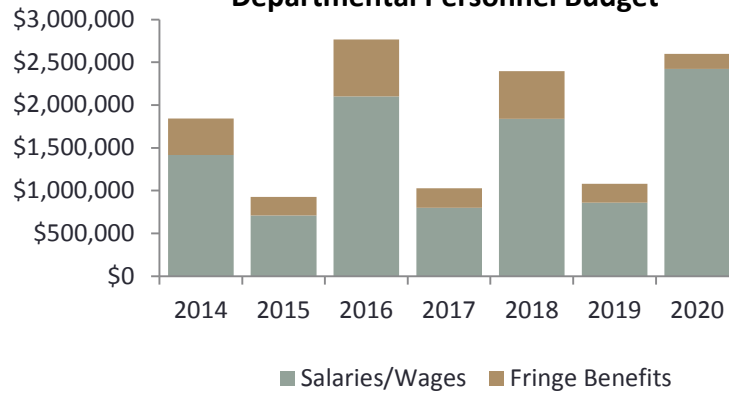
2

Current Vacancies

2

Voluntary Separations

Departmental Personnel Budget

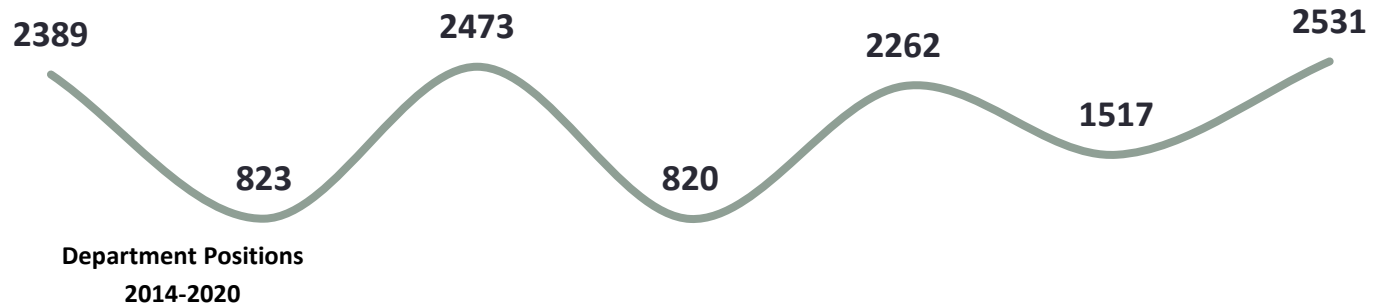


Staffing - Vacancies

The department's Election Commission Administrator and Early Voting Coordinator are currently vacant. The Election Commission Administrator position is expected to be filled later this year. The Early Voting Coordinator position is not funded in the Proposed Budget.

Staffing - Authorized Positions

The number of authorized positions rises from 1,517 to 2,531 due to the increased number of elections in even-numbered years.



\$1,562,000

Increase in salaries and wages for the department, up 181.5%

\$332,363

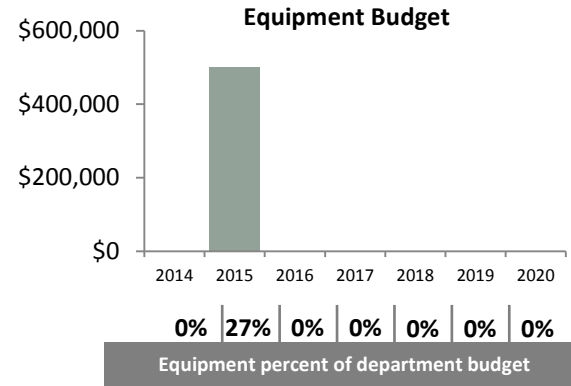
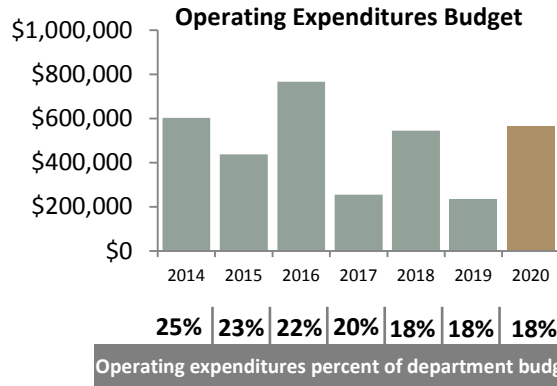
Increase in Operating Expenditures, up 142.9%.

-\$11,972

Decrease in fringe benefits.

8

Number of sites to be used for In-Person Absentee Voting in 2020.



2020 ELECTION DATES AND PROJECTED TURNOUTS

- February 18 Spring Primary - 75,000
- April 7 Spring/Presidential Primary 180,000
- August 11 Fall Primary 95,000
- November 3 General/Presidential Election 285,000

Special Purpose Accounts

The department has no special purpose accounts.

Grants

The department has no grant funding.

Capital Requests

There are no proposed capital programs or projects.

\$185,610

Increase in department's budget.

\$2,531

Number of positions authorized for 2020.

4

Number of elections scheduled for 2020.

1,100%

Increase in early-voted ballots since 2000.

I. Voter Registration Efforts

Recent changes to election law have made it increasingly difficult for persons in poverty (due to the transient nature of poverty), students and seniors to register to vote. Subsequently, in 2018, the Election Commission launched ten strategies to encourage voter registration prior to Election Day. These strategies include:

- Completion and dissemination of videos promoting step-by-step instructions related to the State's new online registration system.
- Establishment of highly visible registration kiosks at libraries, Health Department clinics and many other community-based agencies (e.g. YWCA, 16th Street Health Clinics, SDC).
- Distribution of door hangers (by Safe & Sound), bucks slips in Milwaukee Water Works mailings.
- Dissemination of information at all HACM facilities.
- Staffing at community events.
- Promoting the National Voter Registration Week and partnering with voting rights and community groups (such as the ACLU's bus shelter Bill board campaign) to share information.

While the City experienced a noteworthy increase in voter participation from the 2014 midterm to the 2018 midterm, same-day registrations actually declined. This would indicate a success in efforts to get more people registered prior to the election.

II. Impact of Voter ID Law.

The effects of Wisconsin's photo ID law on Milwaukee residents remain significant. The State's investment in a photo ID education campaign was negligible. While the City, along with numerous community partners, have made a substantial investment in photo ID education, the communities that are the most-impacted by this law (people in poverty, students and seniors) can also be the most difficult to reach via messaging.

In addition to a lack of messaging, erroneous messages, passed from person to person, can also impact or discourage access to voting. Misinformation includes references to an ID specific to voting ("voter ID"), that the address on the ID must match the registration ID, or that only "REAL IDs" can be used to meet the photo ID requirement.

Based on the tracking of issued provisional ballots and other Election Day documentation, it is estimated that between 250-300 City of Milwaukee residents were not able to vote in the 2018 General Election due to this requirement. This number does not reflect people who did not attempt to vote due to lacking ID or misperceptions related to the requirement.

III. Initiatives and Programs.

The Election Commission plans to undertake the following initiatives and programs in 2020:

- Expanding the "In-Person Absentee 'Early' Voting" (IPAV) from the 3 sites used for the 2016 Presidential Election to the 8 sites used in the 2018 Gubernatorial Election. Additionally, evening and weekend (both Saturday and Sunday) will be made available.
- Expanding, for the April Spring Election, from one site used in 2016 or 3 sites.
- Streamlining election preparation processes related to the field, data (registration and absentee) quality control, and achieving sufficient worker staffing.