



Certificate of Appropriateness

Milwaukee Historic Preservation Commission/841 N Broadway/Milwaukee, WI 53202/phone 414-286-5712

Property

939 W. Historic Mitchell Street

Description of work

Install new ATM, bollards, and parking lot features per attached plans

Date issued

11/17/2025

Under the provisions of Section 320-21 (11) and (12) of the Milwaukee Code of Ordinances, the Milwaukee Historic Preservation Commission has granted a certificate of appropriateness for the work listed above. The work was found to be consistent with preservation guidelines. The following conditions apply to this certificate of appropriateness: N/A

All work must be done in a craftsman-like manner. Staff must approve any changes or additions to this certificate before work begins. Work that is not completed in accordance with this certificate may be subject to correction orders or citations. If you require technical assistance, please contact Historic Preservation staff as follows: Phone: (414) 286-5712 E-mail: hpc@milwaukee.gov.

Permits and timeline

You are responsible for determining if permits are required and obtaining them prior to commencing work. Consult the Development Center on the web or by telephone for details www.milwaukee.gov/lms (414) 286-8210. If permits are not required, work must be completed within one year of the date this certificate was issued. If permits are required, permits must be obtained within one year of the date this certificate was issued.

City of Milwaukee Preservation Staff

INDEX:

T-1.0	SITE PLAN / TITLE SHEET
A-1.0	DRIVE-UP ISLAND PLAN
A-2.0	ATM PLAN AND ELEVATIONS

CUSTOMER

939 W HISTORIC MITCHELL ST
COM-ALT-25-00724



COMMISSIONER OF NEIGHBORHOOD SERVICES
MILWAUKEE, WI
PLANS CONDITIONALLY APPROVED
Subject to s.200-23 City of Milwaukee Code of Ordinances
BY [Signature] DATE 11/14/25
SEE PLAN REVIEW LETTER AND/OR PERMIT FOR CONDITIONS
ADDITIONAL COMMENTS:



**Michael Peine
Architects**
Commercial - Industrial
Design/Build Partnering

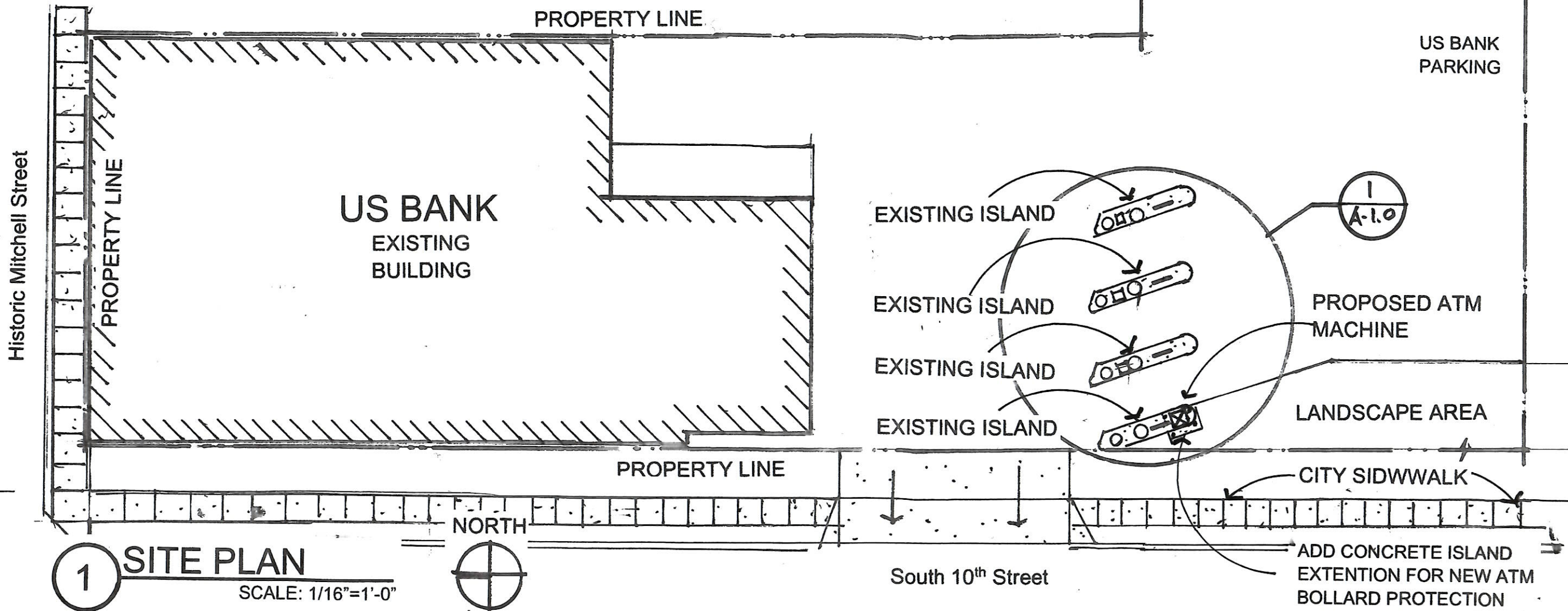
4017 N. Lincoln Ave.
Waukegan, WI 53211
(508) 518-0531 Phone
Mpeine54@icloud.com

Owner:
Lindsey Chamberlin,
US Bank ATM Admin
17650 NE Sandy Blvd
Gresham, OR. 97230
503-703-0036
Lindsey.chamberlin
@usbank.com

US BANK
939 Historic W Mitchell
MILWAUKEE, WISCONSIN 53204
Drive-up ATM Installation

REVISIONS
DRAWN
CHECKED
DATE
October 2 ND , 2025
SCALE
JOB NO.
SHEET DESCRIPTION
SHEET NUMBER

T-1.0



10TH STREET

EXIT DRIVEWAY APRON

CITY SIDEWALK

ADD CONCRETE ISLAND
EXTENTION FOR NEW ATM
BOLLARD PROTECTION
STEEL COLUMN FRAME

PROPOSED ATM
MACHINE

NEW 6" CONCRETE FILLED
STEEL PIPE BOLLARD

LANDSCAPE AREA

PROPERTY LINE

ATM LANE #4

TELLER LANE #3

TELLER LANE #2

TELLER LANE #1

CONCRETE
BOLLARD

CONCRETE
DRIVE-UP ISLAND

NEW 6" CONCRETE FILLED
STEEL PIPE BOLLARD

CONCRETE FILLED
STEEL BOLLARD

CONCRETE
BOLLARD

CONCRETE
DRIVE-UP ISLAND

STEEL COLUMN FRAME

CONCRETE FILLED
STEEL BOLLARD

CONCRETE FILLED
STEEL BOLLARD

NEW 6" CONCRETE FILLED
STEEL PIPE BOLLARD

FINISHED GRADE

EXISTING CONCRETE
ATM ISLAND

NEW CONCRETE ISLAND
EXTENTION / BOLLARD
FOUNDATION

BOLLARD SECTION A-A

SCALE: 1/2"=1'-0"

NORTH



1

DRIVE-UP ISLAND PLAN

SCALE: 1/4"=1'-0"



**Michael Peine
Architects**

Commercial - Industrial
Design/Build Partnering

4917 N. Industrial Ave.
Vancouver, WA 98661
(509) 518-0531 Phone

mpeine54@icloud.com

Owner:

Lindsey Chamberlin,
US Bank ATM Admin
17650 NE Sandy Blvd
Gresham, OR. 97230
503-703-0036
Lindsey.chamberlin
@usbank.com

US BANK
939 Historic W Mitchell
MILWAUKEE, WISCONSIN 53204
Drive-up ATM Installation

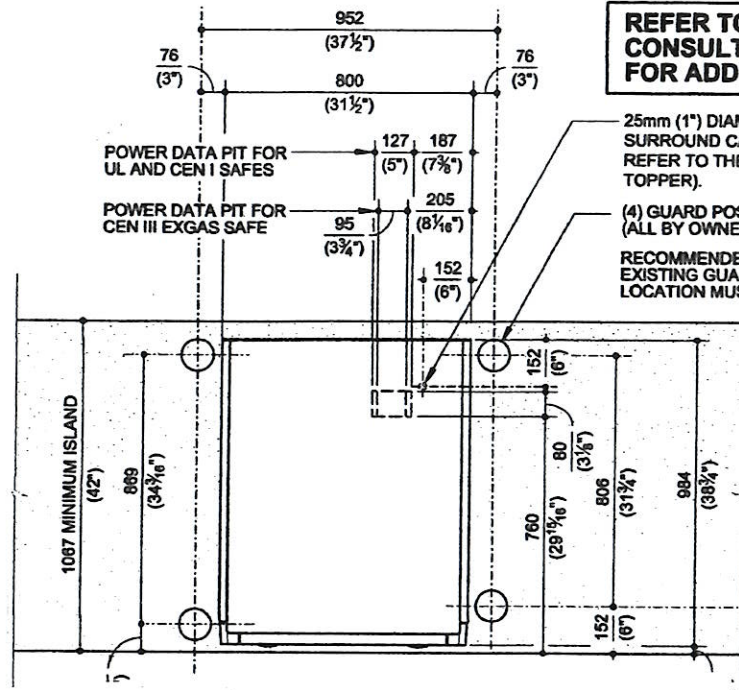
REVISIONS	
DRAWN	
CHECKED	
DATE	October 2 ND , 2025
SCALE	
JOB NO.	
SHEET DESCRIPTION	
SHEET NUMBER	

A-1.0



DN SERIES™ 490 DRIVE-UP ISLAND UL, CEN I and CEN III EXGAS SAFES

CALL 1-800-999-3600

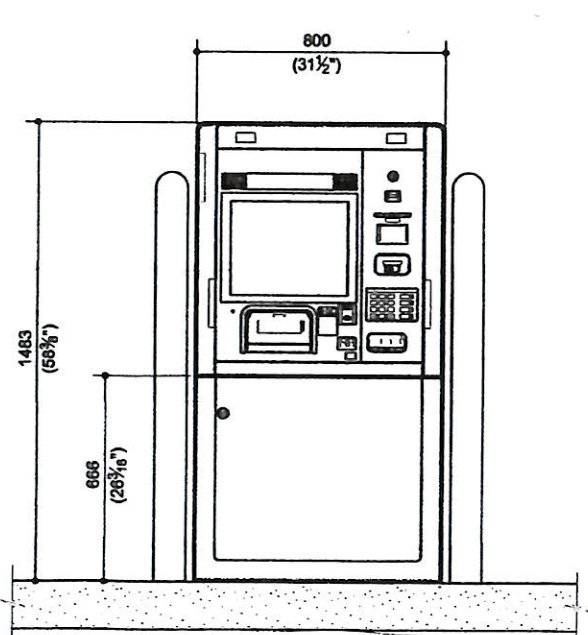


REFER TO INSTALLATION MANUAL # 01750337285.
CONSULT WITH DIEBOLD NIXDORF INSTALLATION/SERVICE
FOR ADDITIONAL DETAILS AND INFORMATION.

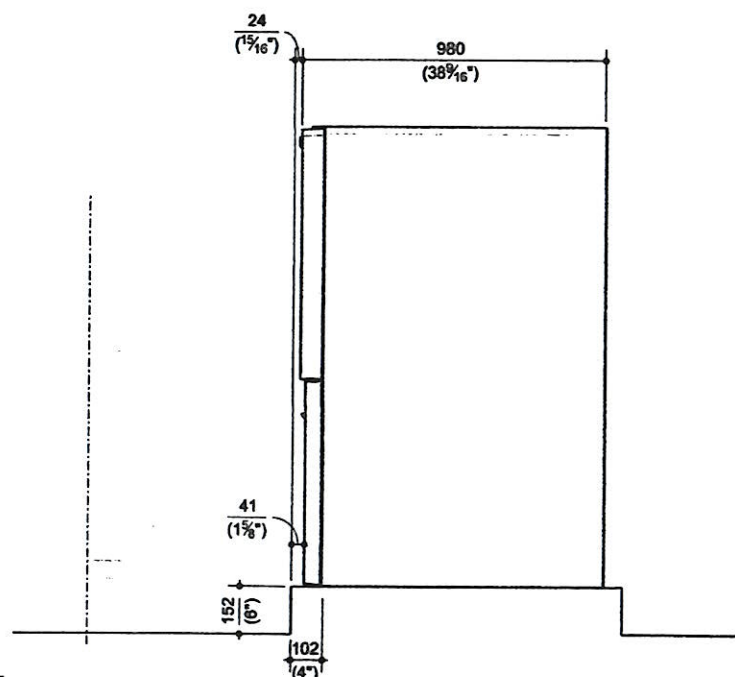
1 ATM ISLAND PLAN
SCALE: 1/4"=1'-0"

NOTE:
DIEBOLD NIXDORF ATMS ARE SPECIFICALLY DESIGNED TO MEET VARIOUS USER CRITERIA FOR DRIVE-UP AND WALK-UP APPLICATIONS INCLUDING REACH, PRIVACY AND SCREEN VIEW ABILITY. A DRIVE-UP ATM USED IN A WALK-UP APPLICATION MAY RESULT IN REDUCED USER PRIVACY. AN OPTIONAL KEYPAD PRIVACY SHIELD IS RECOMMENDED IN THIS APPLICATION.

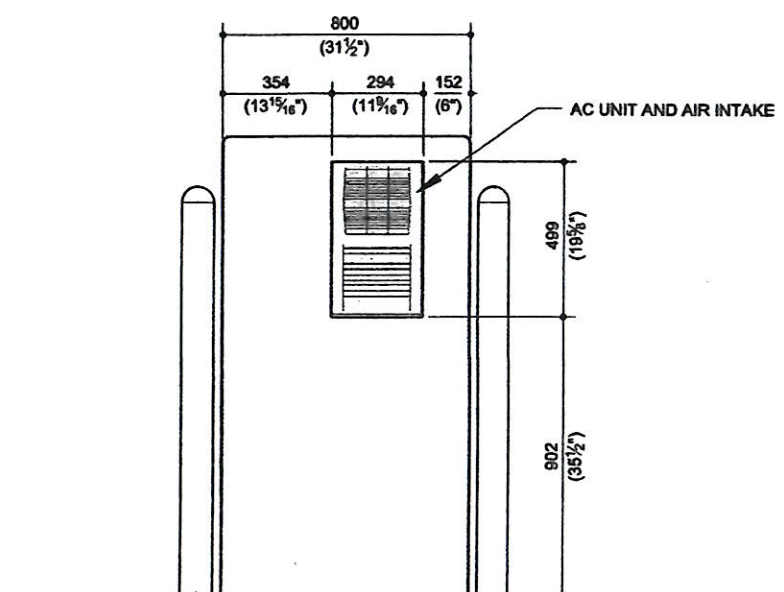
THE CUSTOMER ACCEPTS ALL RESPONSIBILITY FOR ANY REDUCTION IN USER CONVENIENCE, VISIBILITY AND PRIVACY RISK ISSUES ASSOCIATED WITH USING DIEBOLD NIXDORF ATMS OUTSIDE OF THEIR INTENDED APPLICATIONS.



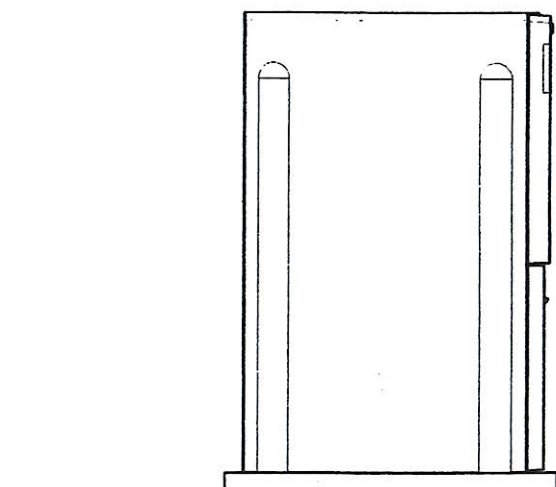
2 EAST ATM ELEV.
SCALE: 1/2"=1'-0"



SECTION



3 WEST ATM ELEV.
SCALE: 1/2"=1'-0"



4 SOUTH ATM ELEV.
SCALE: 1/2"=1'-0"

DN SERIES™ 490 DRIVE-UP ISLAND UL, CEN I and CEN III EXGAS SAFES

SPECIFICATIONS

POWER REQUIREMENTS:

THE ATM REQUIRES SINGLE-PHASE THREE WIRE UNSWITCHED POWER. WIRING TO THE ATM MUST USE A THIRD-WIRE EARTH GROUND (CONDUIT GROUND IS NOT ACCEPTABLE). THE POWER SUPPLIED MUST BE AS SPECIFIED BELOW.

CHOOSE AND SUPPLY THE PROPER POWER FOR THE SITE:

- 100-127 VAC (+6%, -10%) AT 50 (±1%) Hz, SINGLE-PHASE
- 100-127 VAC (+6%, -10%) AT 60 (±1%) Hz, SINGLE-PHASE
- 200-240 VAC (±10%) AT 50 (±1%) Hz, SINGLE-PHASE
- 200-240 VAC (±10%) AT 60 (±1%) Hz, SINGLE-PHASE

POWER TO THE ATM IS TO BE A DEDICATED SERVICE AND MUST BE PROTECTED BY A SAFETY QUICK-DISCONNECT DEVICE TO BREAK LINE VOLTAGE (SUCH AS A CIRCUIT BREAKER AT THE ELECTRICAL SERVICE PANEL). THE QUICK DISCONNECT DEVICE (OR CIRCUIT BREAKER) MUST TURN OFF THE LINE VOLTAGE AT THE AMPERAGE SPECIFIED BELOW.

100-127 VAC SERVICE, DISCONNECT AT 30 AMPERES
200-240 VAC SERVICE, DISCONNECT AT 15 AMPERES

POWER USAGE:

MACHINE STATUS	TERMINAL CONFIGURED AS NOTED BELOW	WITH AIR CONDITIONER (+900 WATTS)	MAX. USAGE WITH A/C and BATTERY CHARGING (+130 WATTS)	WITH HEATERS (+1400 WATTS)	MAX. USAGE WITH HEATERS and BATTERY CHARGING (+130 WATTS)
IDLE (NO TRANSACTION)	160 WATTS	1060 WATTS	1190 WATTS	1560 WATTS	1690 WATTS
OPERATION (MAXIMUM)	370 WATTS	1270 WATTS	1400 WATTS	1770 WATTS	1900 WATTS

TERMINAL CONFIGURATION:

AUTORIZED CARD READER, RECEIPT PRINTER WITH RETRACT, CASH IN/OUT RM4V, 15" SUNLIGHT VIEWABLE DISPLAY, HIGH PERFORMANCE PC, CONTACTLESS CARD READER, BATTERY INSTALLED, CHECK DEPOSIT AND (2) 700 W HEATERS.

THE POWER USE DEPENDS ON THE NUMBER AND TYPE OF DEVICES PRESENT IN THE TERMINAL, AND THE TYPE OF TRANSACTION THE TERMINAL IS PERFORMING.

HEAT OUTPUT CONFIGURATION:

106 AVERAGE BTU/HR - USING 128kWh PER MONTH AS TYPICAL POWER CONSUMPTION. HEAT OUTPUT VALUE IS BASED ON APPROXIMATELY 240 TRANSACTIONS PER DAY AND ASSUMES NO ADDITIONAL POWER CONSUMPTION OR HEAT CONTRIBUTION FROM HEATERS IN COLD ENVIRONMENTS.

1,071 BTU/HR WHEN AIR CONDITIONER IS OPERATING.

1,780 BTU/HR WHEN HEATERS ARE OPERATING.

OPERATING ENVIRONMENT:

-35° C TO 50° C (-31° F TO 122° F)
15% TO 100% RELATIVE HUMIDITY.

CANOPY REQUIREMENT:

IT IS RECOMMENDED THE UNIT BE PLACED UNDER COVER/CANOPY FOR SUN PROTECTION, WATER INGRESS AND OPERATOR/SERVICE.

NOTE: IN ORDER TO ENSURE THE PROTECTION FROM WATER INGRESS THE FASCIA OF THE TERMINAL MUST BE PROPERLY SEALED AND LATCHED CORRECTLY. TO VERIFY IT IS HAS BEEN LATCHED CORRECTLY, THE USER CAN PULL ON THE FASCIA TO ENSURE NEITHER SIDE PULLS OUT.

WEIGHT OF UNIT:

UL and CEN I — 907kg (2,000 LBS.)
CEN III EXGAS — 1004kg (2,209 LBS.)

ALARM PROTECTION:

THE SAFE IS EQUIPPED WITH A BASIC ALARM SENSOR PACKAGE. THE BASIC PACKAGE INCLUDES A SAFE DOOR OPEN SWITCH, ALARM SHUNTING SWITCH, AND RATE-OF-RISE HEAT SENSOR.

RECOMMENDED ISLAND:

1068mm (3'-6") WIDE X 152mm (6") HIGH X 203mm (8") MIN. THICKNESS

PHYSICAL SECURITY:

UL SAFE

THE SAFE MEETS THE REQUIREMENTS OF UL STANDARD 291 LEVEL 1 FOR AUTOMATED TELLER SYSTEMS FOR 24 HOUR SERVICE. THE SAFE DOOR IS PROVIDED WITH UL LISTED RELOCKING DEVICES AND A UL LISTED GROUP 1 ELECTRICAL LOCK WITH SINGLE OR DUAL COMBINATION LOCK.

TO MEET REQUIREMENTS OF UL 291, DIEBOLD NIXDORF RECOMMENDS (4) M20 ANCHOR BOLTS THAT ARE 170mm (6 3/4") LONG FOR PROPERLY SECURING THE UNIT (PART #01750308241). THE OVERALL DRILLING DEPTH DEPENDS ON STRUCTURAL CONDITIONS. THE MOUNTING ANCHORS MUST BE LOCATED AT LEAST 125mm (4 1/8") DEEP IN THE LOAD BEARING CONCRETE (SEE DETAIL). ANCHOR BOLTS MUST BE USED IN ALL (4) AVAILABLE ANCHOR HOLES. IF MOUNTING KIT IS NOT PROVIDED, USE EQUIVALENT FASTENING MATERIAL. INSTALL ANCHORS IN ACCORDANCE WITH INSTALLATION TEMPLATE PART NUMBER #01750338732 (ALSO PROVIDED).

CEN SAFES

THE SAFE MEETS THE REQUIREMENTS FOR EN 1143-1 CEN RESISTANCE GRADE FOR ATM SAFES.

TO MEET REQUIREMENTS OF CEN, DIEBOLD NIXDORF RECOMMENDS (4) M20 ANCHOR BOLTS THAT ARE 170mm (6 3/4") LONG FOR PROPERLY SECURING THE UNIT (PART #01750308241). THE OVERALL DRILLING DEPTH DEPENDS ON STRUCTURAL CONDITIONS. THE MOUNTING ANCHORS MUST BE LOCATED AT LEAST 125mm (4 1/8") DEEP IN THE LOAD BEARING CONCRETE (SEE DETAIL). ANCHOR BOLTS MUST BE USED IN ALL (4) AVAILABLE ANCHOR HOLES. IF MOUNTING KIT IS NOT PROVIDED, USE EQUIVALENT FASTENING MATERIAL. INSTALL ANCHORS IN ACCORDANCE WITH INSTALLATION TEMPLATE PART NUMBER 01750338732 (ALSO PROVIDED).

DIEBOLD NIXDORF M20 ANCHOR BOLTS (OR EQUIVALENT) MEET/EXCEED THE FOLLOWING RESISTANCE GRADE REQUIREMENTS WHEN PROPERLY INSTALLED:

CEN I and CEN III EXGAS SAFE: 50 kN (PULLOUT FORCE)



Michael Peine
Architects

Commercial - Industrial
Design/Build Partnering

4817 N. Island Ave.
Washington, DC 20011
(202) 518-0531 Phone

Mpeine54@icloud.com

Owner:

Lindsey Chamberlin,
US Bank ATM Admin
17650 NE Sandy Blvd
Gresham, OR. 97230
503-703-0036
Lindsey.chamberlin@usbank.com

US BANK
939 Historic W Mitchell
MILWAUKEE, WISCONSIN 53204
Drive-up ATM Installation

REVISIONS	
DRAWN	
CHECKED	
DATE	October 2 ND , 2025
SCALE	
JOB NO.	
SHEET DESCRIPTION	
SHEET NUMBER	

A-2.0



Sent from my iPhone



Sent from my iPhone



**Michael Peine
Architects**
Commercial - Industrial
Design/Build Partnering

4617 N. Kimball Ave.
Whitish Bay, WI 53211
(508) 516-0531 Phone

Mpeine54@icloud.com

Owner:

Lindsey Chamberlin,
US Bank ATM Admin
17650 NE Sandy Blvd
Gresham, OR. 97230
503-703-0036
Lindsey.chamberlin@usbank.com

US BANK
939 Historic W Mitchell
MILWAUKEE, WISCONSIN 53204
Drive-up ATM Installation

REVISIONS	
DRAWN	
CHECKED	
DATE	October 2 ND , 2025
SCALE	
JOB NO.	
SHEET DESCRIPTION	
SHEET NUMBER	

P-1.0



**Michael Peine
Architects**
Commercial - Industrial
Design/Build Partnering

4017 N. Idawild Ave.
Whitish Bay, WI 53211
(202) 518-0531 Phone

Mpeine54@icloud.com

Owner:

Lindsey Chamberlin,
US Bank ATM Admin
17650 NE Sandy Blvd
Gresham, OR. 97230
503-703-0036
Lindsey.chamberlin@usbank.com

US BANK
939 Historic W Mitchell
MILWAUKEE, WISCONSIN 53204
Drive-up ATM Installation

REVISIONS

DRAWN

CHECKED

DATE

October 2ND, 2025

SCALE

JOB NO.

SHEET DESCRIPTION

SHEET NUMBER

P-2.0