

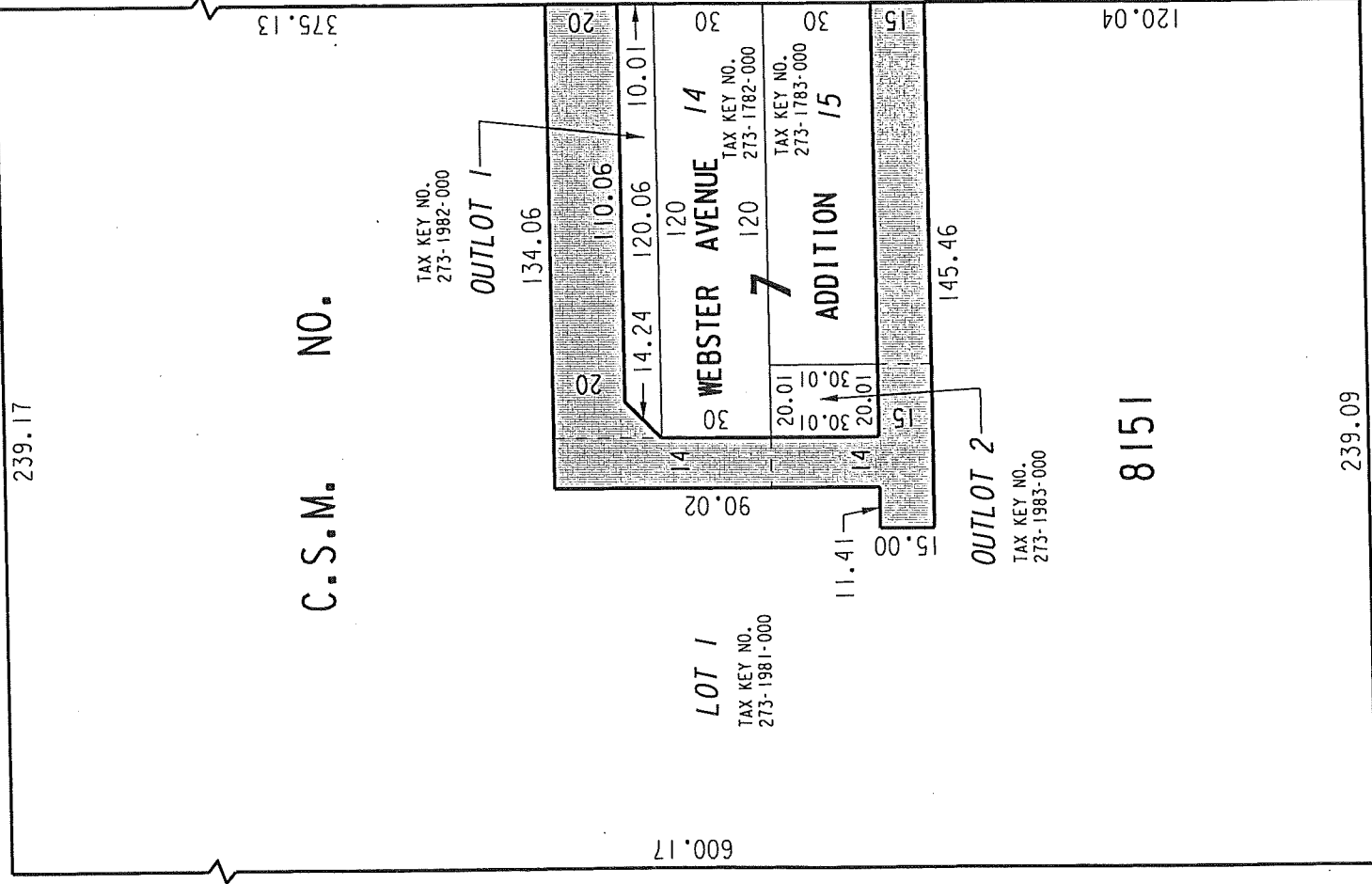
273

N.E. 1/4 SEC. 8, T.7N., R.22E.

**E. Nash**

(60' R.O.W.)

**St.**



**St.**

**St.**

C.S.M. NO.

(70' R.O.W.)

(70' R.O.W.)

**N. Palmer**

**N. 1st**

33

33

**E. Keefe**

1/4 SEC. LINE

**Ave.**

(66' R.O.W.)

PUBLIC ALLEYS  
PROPOSED TO  
BE VACATED



EXHIBIT "A"

FILE NO. 111069

INFRASTRUCTURE SERVICES DIVISION

MILWAUKEE, WISCONSIN

ASSIGNED TO: W.E. FUCHS

CH'K'D. BY: W.E. FUCHS

DRAWN BY: W.E.F.

DATE: DEC. 27, 2011

PROJECT/GRANT NO.: WK52337307

SCALE: 1" = 50'

APPROVED BY:

*Maricia Cornell*

CENTRAL DRAFTING & RECORDS MANAGER

*Jeffrey Palenche*  
CITY ENGINEER