

# VILLARD AVENUE LIBRARY AND HOUSING

## Survey

### Land Information Services, Inc.

9722 Watertown Plank Road  
Building S-5  
Wauwatosa, WI 53226

Ph 414-302-9515  
Fx 414-302-9516

## Landscape

### Lone Oak Interests, LLC

2915 McKinley Street  
Madison, WI 53705

Ph 608-279-1695

## Architectural

### Engberg Anderson

320 East Buffalo Street  
Suite 500  
Milwaukee, Wisconsin 53202

Ph 414-944-9000  
Fx 414-944-9100

Survey

Landscape Plan

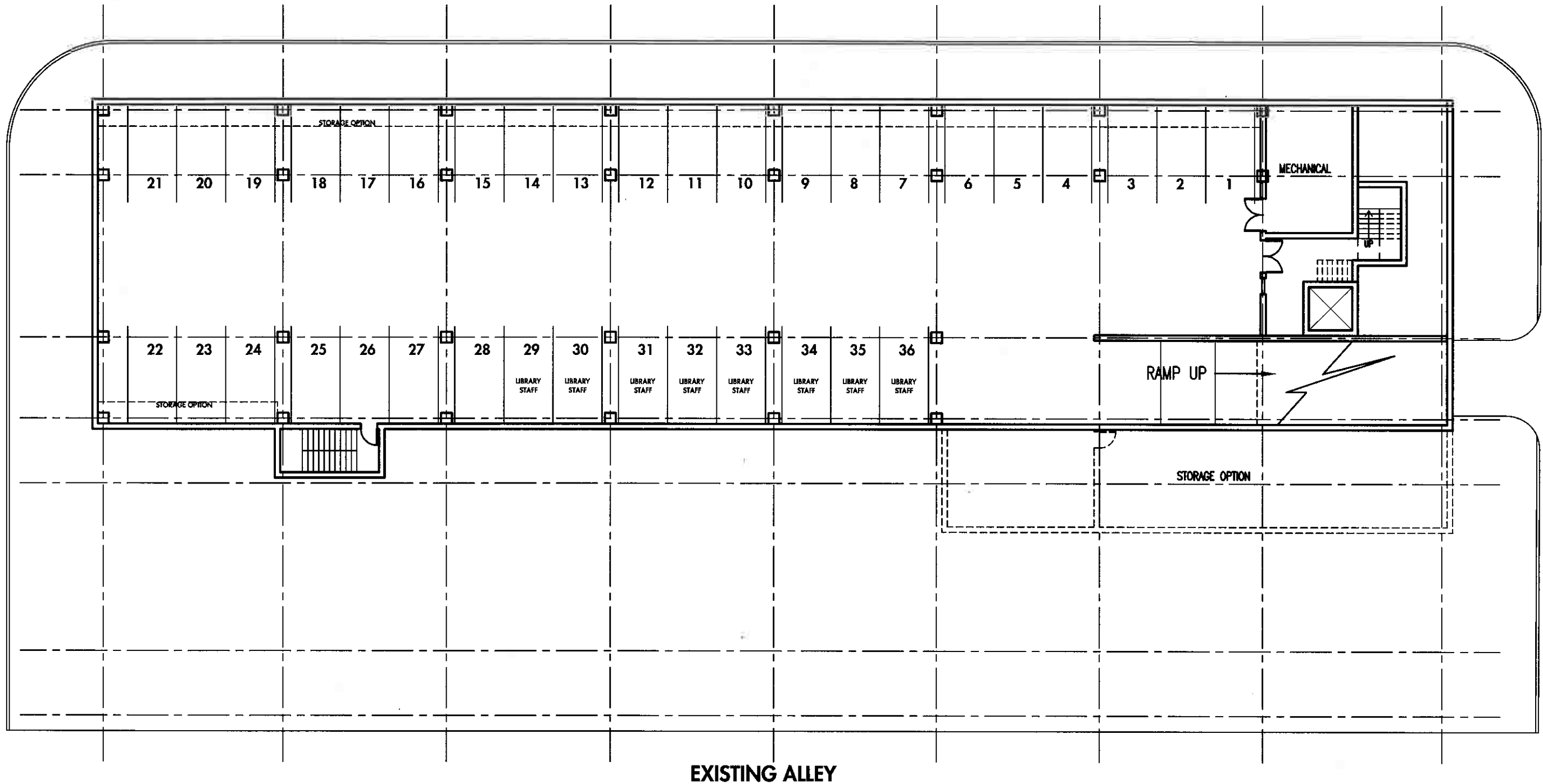
Lower Level Plan  
Site Plan  
First and Second Residential Floor Plans  
Third Residential Floor Plan  
Building Elevations  
Building Elevations  
Rendered Building Elevations  
Perspective  
Perspective  
Perspective



WEST VILLARD AVENUE

NORTH 35TH STREET

NORTH 34TH STREET



# VILLARD AVENUE LIBRARY AND HOUSING

LOWER LEVEL PARKING

Scale: 1" = 20'-0"

July 6, 2009

Engberg Anderson Project No. 091905



WEST VILLARD AVENUE

NORTH 35TH STREET

RESIDENTIAL ENTRY

250'-0"

LIBRARY

FLOOR ELEVATION  
EL. 100'-0"

LOBBY

FLOOR EL.  
EL. 96'-0"

61'-0"

PROPERTY LINE

REFUSE

LEASING

DOWN

BELOW GRADE  
PARKING ENTRY

NORTH 34TH STREET

LIBRARY ENTRY

1

BICYCLES

2

3

4

5

6

7

8

9

10

11

12

LIBRARY PARKING

DECORATIVE METAL  
PARKING LOT GATE

DECORATIVE METAL  
PARKING LOT GATE

FACE OF BUILDING  
ABOVE

FACE OF BUILDING  
ABOVE

13

14

15

16

17

18

19

20

21

22

23

24

25

26

27

28

29

30

31

32

EXISTING ALLEY

APPROXIMATE LOCATION  
OF EXISTING UTILITY POLES, TYP.

DECORATIVE METAL  
FENCE ON CAST  
STONE WALL

DECORATIVE METAL  
FENCE ON CAST  
STONE WALL

# VILLARD AVENUE LIBRARY AND HOUSING

SITE PLAN

Scale: 1" = 20'-0"

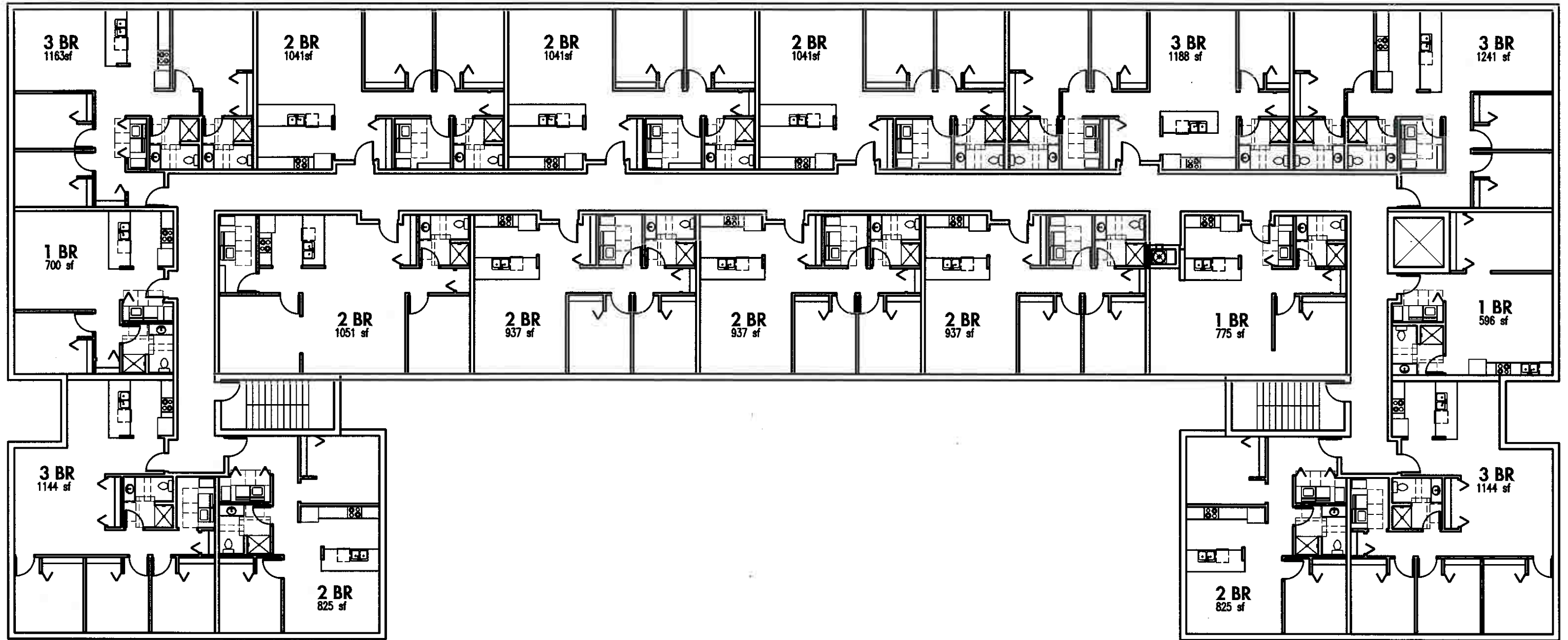
July 13, 2009

Engberg Anderson Project No. 091905

Engberg  
Anderson

MILWAUKEE • MADISON • TUCSON





○ First and Second Residential Floor Plans  
SCALE: 1/16" = 1'-0"



# VILLARD AVENUE LIBRARY AND HOUSING

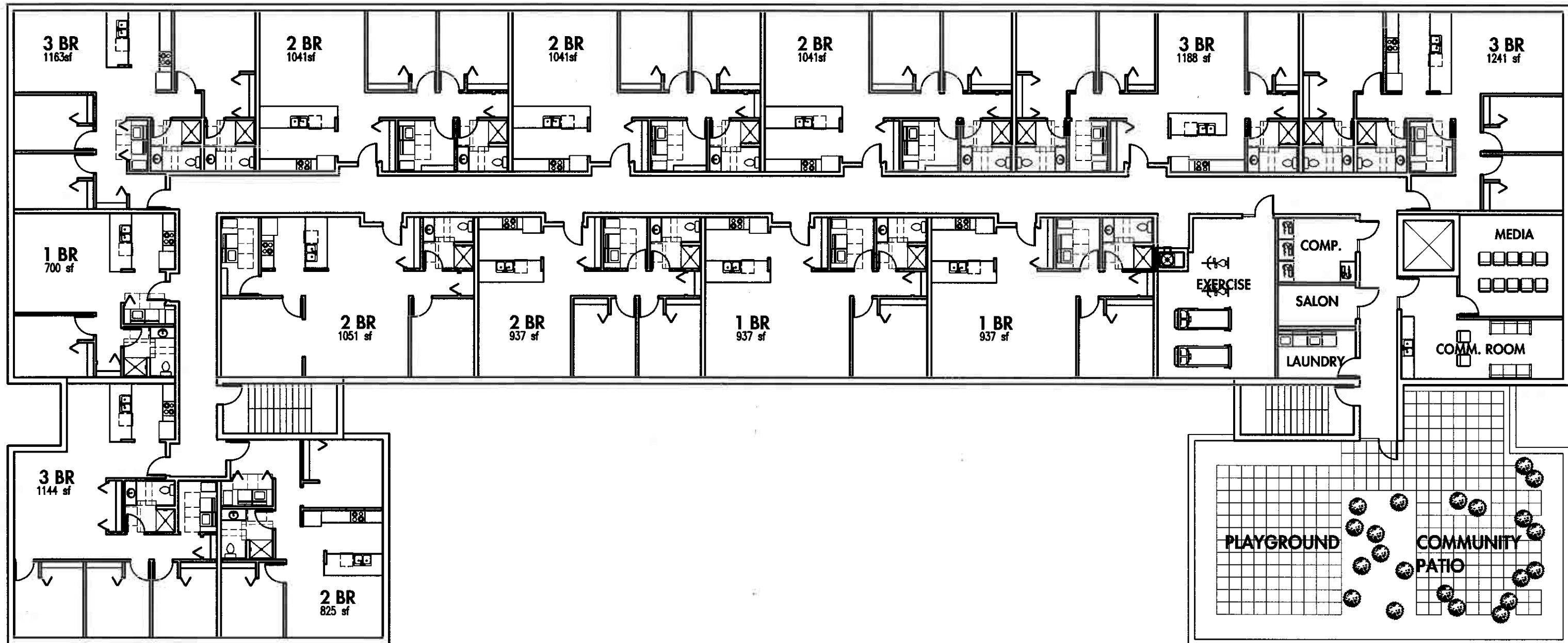
FIRST AND SECOND RESIDENTIAL FLOOR PLANS

Scale: 1/16" = 1'-0"

June 17, 2009

Engberg Anderson Project No. 091905





○ Third Residential Floor Plan  
SCALE: 1/16" = 1'-0"



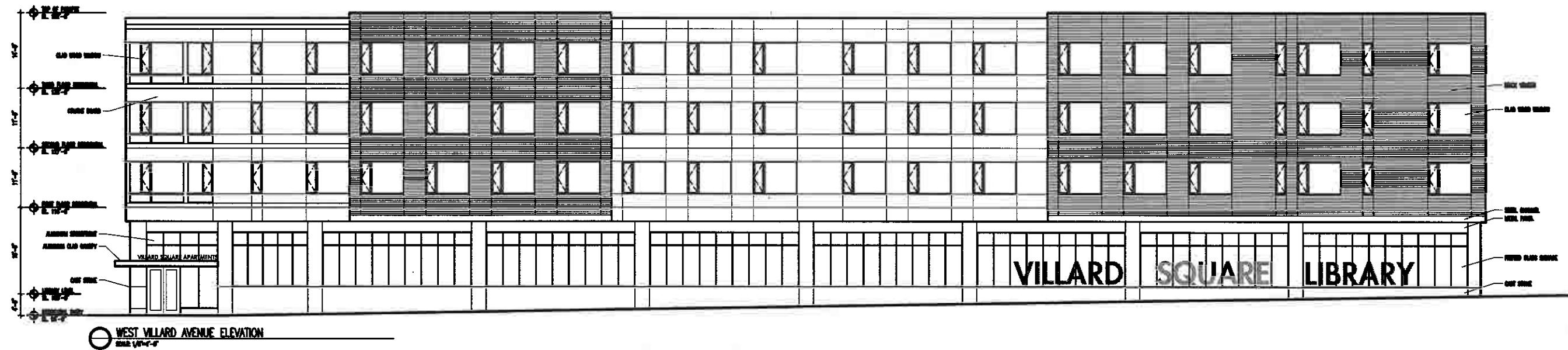
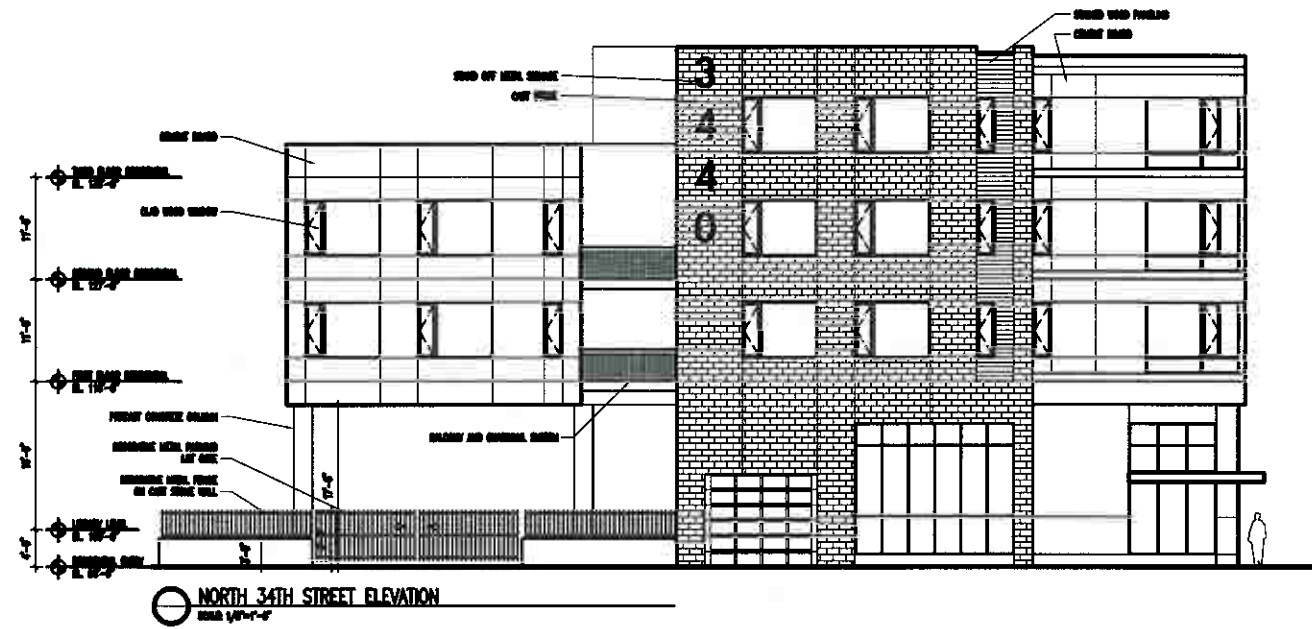
# VILLARD AVENUE LIBRARY AND HOUSING

THIRD RESIDENTIAL FLOOR PLAN

Scale: 1/16" = 1'-0"

June 17, 2009

Engberg Anderson Project No. 091905



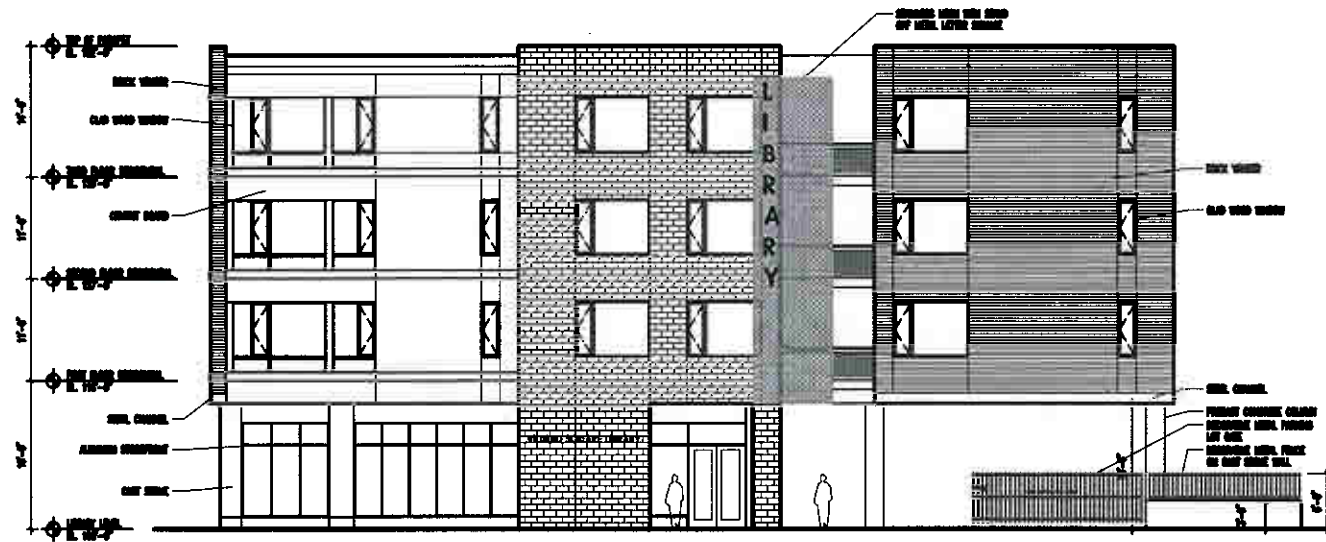
# VILLARD AVENUE LIBRARY AND HOUSING

ELEVATIONS

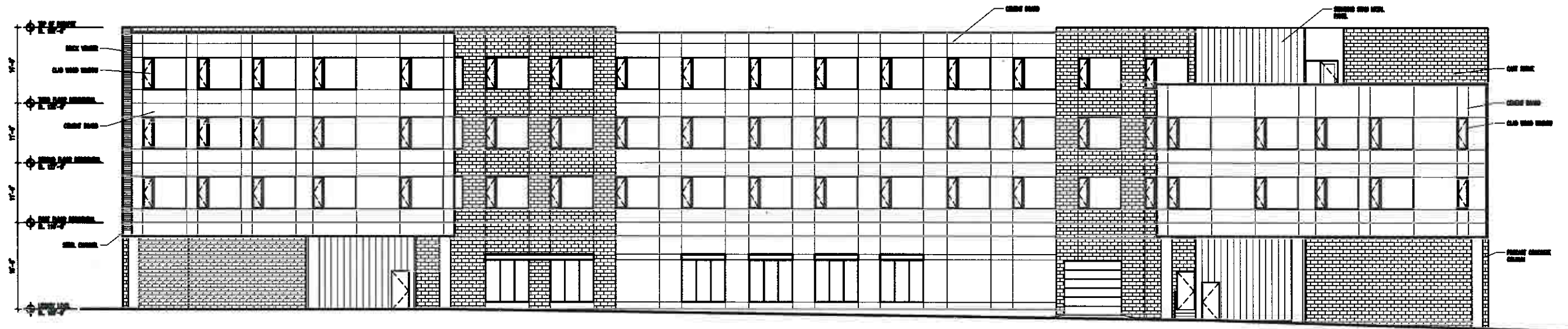
Scale: 1" = 20'-0"

July 13, 2009

Engberg Anderson Project No. 091905



**NORTH 35TH STREET ELEVATION**  
 Scale: 1/8" = 1'-0"



**ALLEY ELEVATION**  
 Scale: 1/8" = 1'-0"

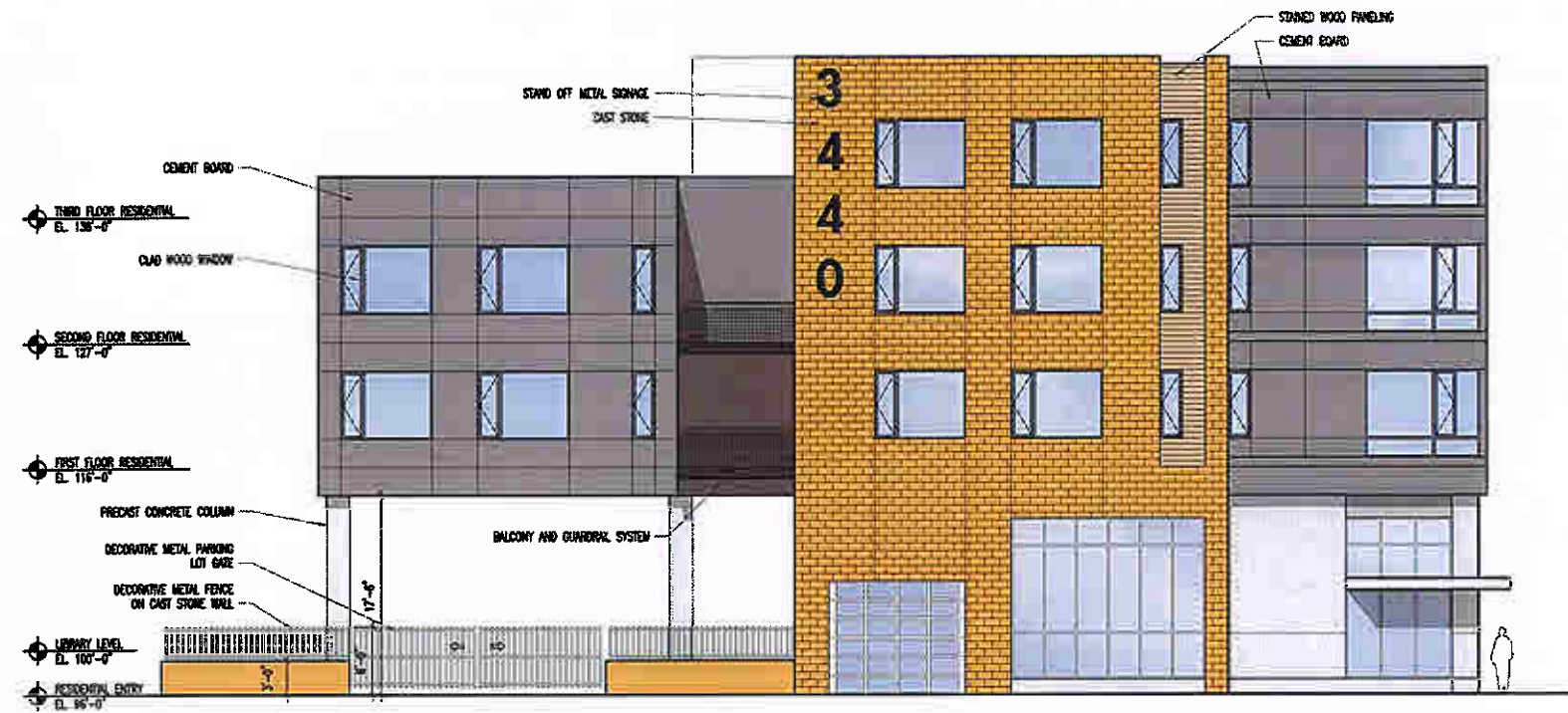
# VILLARD AVENUE LIBRARY AND HOUSING

**ELEVATION**

Scale: 1" = 20'-0"

July 13, 2009

Engberg Anderson Project No. 091905



**NORTH 34TH STREET ELEVATION**  
SCALE: 1/8"=1'-0"



**NORTH 35TH STREET ELEVATION**  
SCALE: 1/8"=1'-0"



**WEST VILLARD AVENUE ELEVATION**  
SCALE: 1/8"=1'-0"





## VILLARD AVENUE LIBRARY AND HOUSING

**PERSPECTIVE**

NTS

July 13, 2009

Engberg Anderson Project No. 091905





## VILLARD AVENUE LIBRARY AND HOUSING

**PERSPECTIVE**

NTS

July 13, 2009

Engberg Anderson Project No. 091905

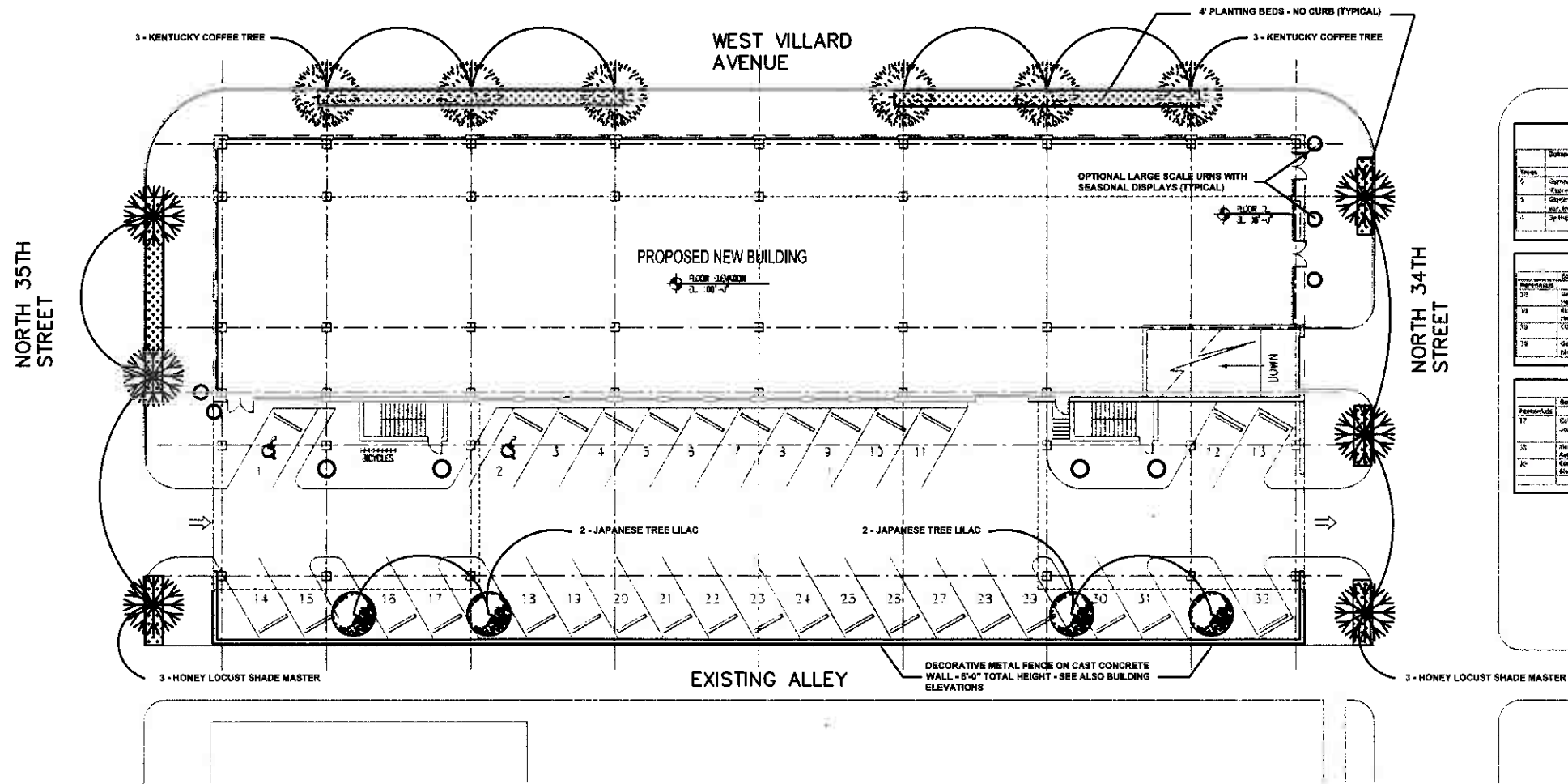




# VILLARD AVENUE LIBRARY AND HOUSING



**PERSPECTIVE**  
NTS  
July 13, 2009  
Engberg Anderson Project No. 091905



Tree Schedule					
Item	Botanical Name	Common Name	Size	Root	Comments
1	<i>Gymnocladia dioica</i>	Kentucky Coffee Tree	2-2 1/2"	ESB	Matching
2	<i>Quercus macrocarpa</i>	White Oak	2-2 1/2"	ESB	Matching
3	<i>Juniperus horizontalis</i>	Creeping Juniper	2-2 1/2"	ESB	Matching

4' Planter - Mixed Species					
Item	Botanical Name	Common Name	Size	Root	Comments
1	<i>Salix caprea</i>	Salix	1 gallon	container	
2	<i>Prunella vulgaris</i>	Prunella	1 gallon	container	
3	<i>Verbena officinalis</i>	Verbena	1 gallon	container	
4	<i>Salvia officinalis</i>	Salvia	1 gallon	container	

4' Planter - 100% 14" x 14" x 14" Sizes					
Item	Botanical Name	Common Name	Size	Root	Comments
1	<i>Salix caprea</i>	Salix	1 gallon	container	
2	<i>Prunella vulgaris</i>	Prunella	1 gallon	container	
3	<i>Verbena officinalis</i>	Verbena	1 gallon	container	
4	<i>Salvia officinalis</i>	Salvia	1 gallon	container	

# CONCEPTUAL LANDSCAPING PLAN

1/16" = 1'-0"



## VILLARD AVENUE LIBRARY AND HOUSING

3402-3440 West Villard Avenue  
Milwaukee, Wisconsin

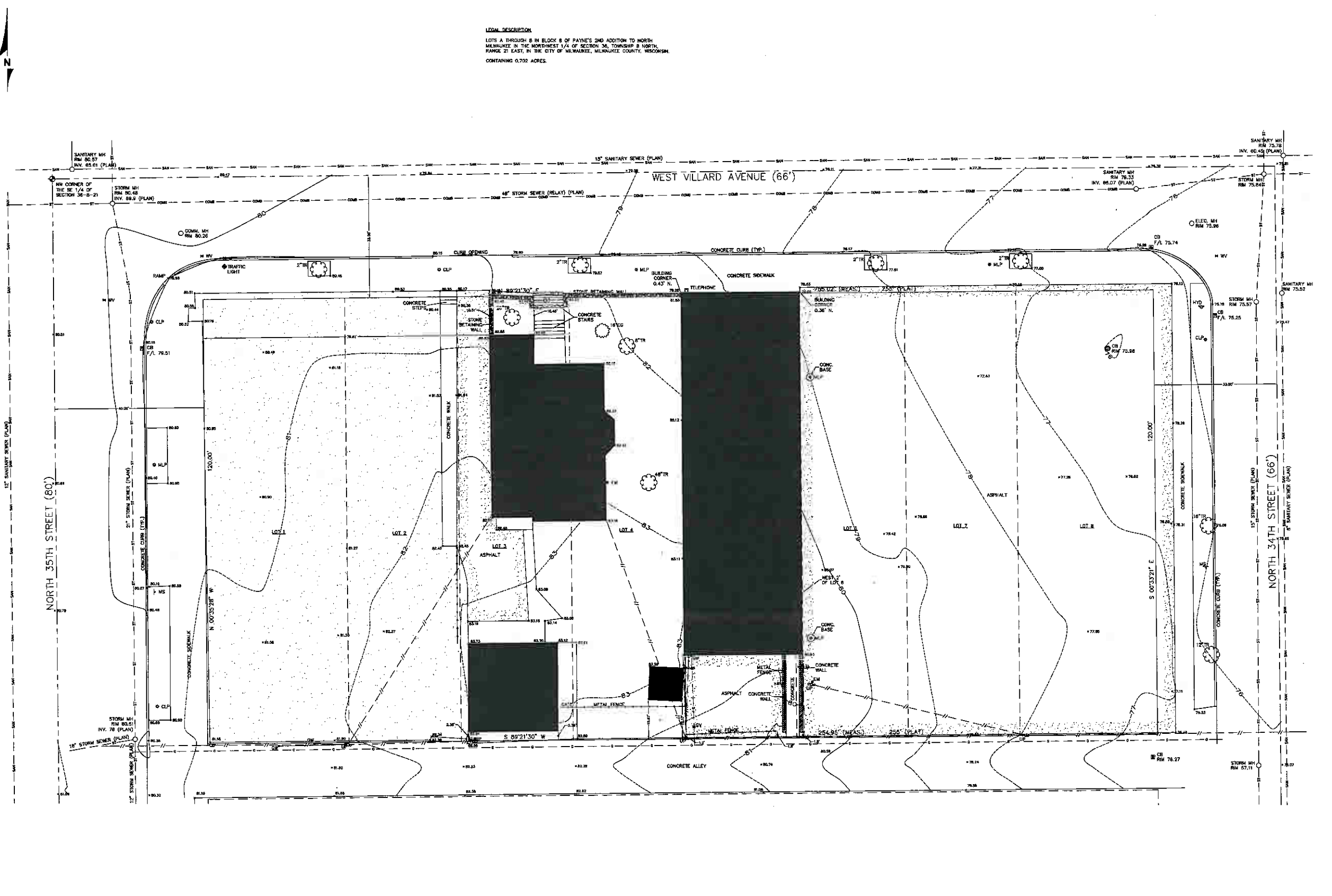


LONE OAK INTERESTS, LLC  
2915 McKinley Street  
Madison, WI 53705

**GORMAN**  
& COMPANY, INC.

**LEGAL DESCRIPTION**  
 LOTS 1 THROUGH 8 IN BLOCK 8 OF PAYNE'S 2ND ADDITION TO NORTH MILWAUKEE IN THE NORTHWEST 1/4 OF SECTION 36, TOWNSHIP 8 NORTH, RANGE 21 EAST IN THE CITY OF MILWAUKEE, MILWAUKEE COUNTY, WISCONSIN.  
 CONTAINING 0.702 ACRES.

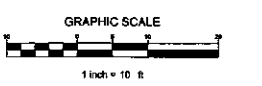
**LIS**  
 LAND INFORMATION SERVICES, INC.  
 ENGINEERS, SURVEYORS & CONSULTANTS  
 300 WATER FRONT PLAZA, SUITE 100  
 MILWAUKEE, WI 53212  
 TELEPHONE: 778-8888



ARCHITECTURAL SURVEY  
**3401-3431 WEST VILLARD AVENUE**  
 CITY OF MILWAUKEE

DRAWN BY: J.T.M.  
 CHECKED BY: M.L.W.  
 DATE: 12/15/03  
 JOB NUMBER: S03241RDAR

**NOTES**  
 1. PROJECT BENCHMARK: CITY OF MILWAUKEE STANDARD BENCHMARK #182, ELEV. #80.077.  
 2. LEGAL DESCRIPTION BASED ON BEST AVAILABLE DATA. SHOULD BE NOTED BY RECORDED DOCUMENTS.  
 3. SITE WAS SNOW COVERED AT TIME OF SURVEY.

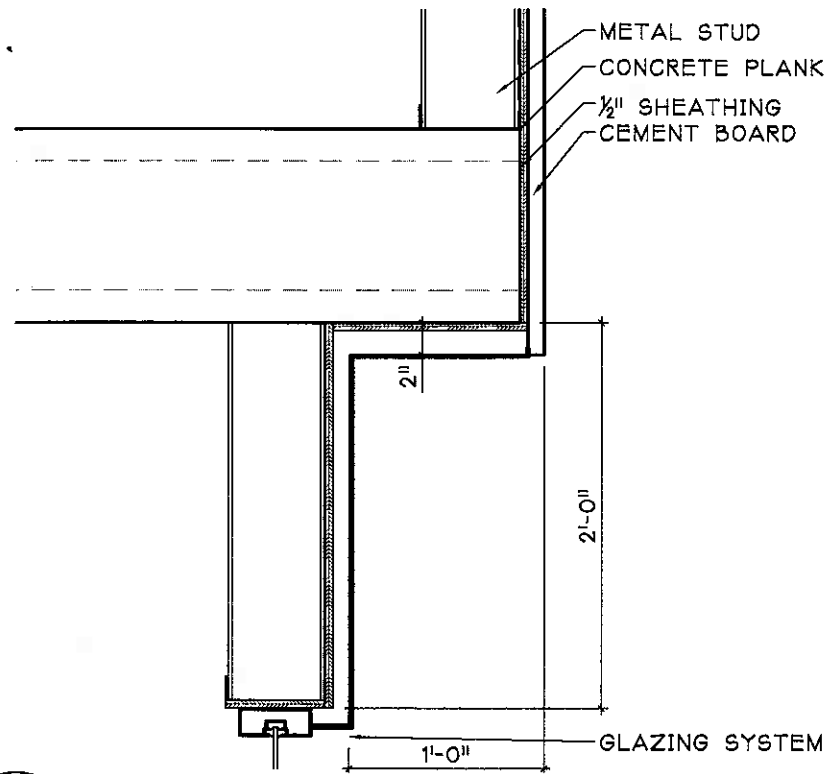


**LEGEND**

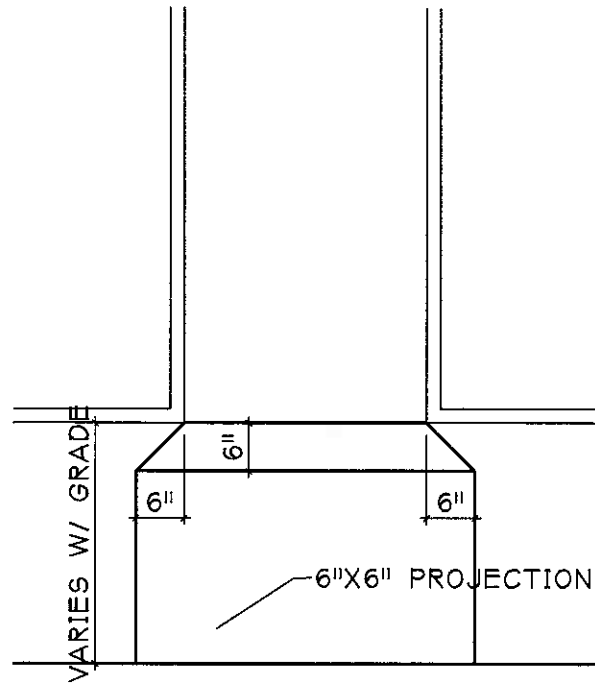
SYMBOL	DESCRIPTION	SYMBOL	DESCRIPTION	SYMBOL	DESCRIPTION
○	BENCHMARK (BM)	○	MILWAUKEE (M)	○	MONITORING WELL (MW)
⊕	BOUNDARY MARK (B.M.)	○	MONITORING WELL (MW)	○	UNDERGROUND CONDUIT (UC)
○	BENCH MARK (B.M.)	○	CONDUIT (CON)	○	UNDERGROUND CONDUIT (UC)
○	CONCRETE (CON)	○	CONDUIT (CON)	○	UNDERGROUND CONDUIT (UC)
○	CORNER MARK (CM)	○	CONDUIT (CON)	○	UNDERGROUND CONDUIT (UC)
○	CURB (CUR)	○	CONDUIT (CON)	○	UNDERGROUND CONDUIT (UC)
○	DEVELOPMENT (DEV)	○	CONDUIT (CON)	○	UNDERGROUND CONDUIT (UC)
○	EXPOSURE (EXP)	○	CONDUIT (CON)	○	UNDERGROUND CONDUIT (UC)
○	FIRE HYDRANT (FH)	○	CONDUIT (CON)	○	UNDERGROUND CONDUIT (UC)
○	FLAG POLE (FP)	○	CONDUIT (CON)	○	UNDERGROUND CONDUIT (UC)
○	GAS PIPE (GP)	○	CONDUIT (CON)	○	UNDERGROUND CONDUIT (UC)
○	GROUNDWATER (GW)	○	CONDUIT (CON)	○	UNDERGROUND CONDUIT (UC)
○	HAZARDOUS (HAZ)	○	CONDUIT (CON)	○	UNDERGROUND CONDUIT (UC)
○	HOIST (HO)	○	CONDUIT (CON)	○	UNDERGROUND CONDUIT (UC)
○	INSULATION (INS)	○	CONDUIT (CON)	○	UNDERGROUND CONDUIT (UC)
○	IRON PIPE (IP)	○	CONDUIT (CON)	○	UNDERGROUND CONDUIT (UC)
○	METAL (MET)	○	CONDUIT (CON)	○	UNDERGROUND CONDUIT (UC)
○	METAL PIPE (MP)	○	CONDUIT (CON)	○	UNDERGROUND CONDUIT (UC)
○	METAL WIRE (MW)	○	CONDUIT (CON)	○	UNDERGROUND CONDUIT (UC)
○	METAL WIRE (MW)	○	CONDUIT (CON)	○	UNDERGROUND CONDUIT (UC)
○	METAL WIRE (MW)	○	CONDUIT (CON)	○	UNDERGROUND CONDUIT (UC)
○	METAL WIRE (MW)	○	CONDUIT (CON)	○	UNDERGROUND CONDUIT (UC)
○	METAL WIRE (MW)	○	CONDUIT (CON)	○	UNDERGROUND CONDUIT (UC)
○	METAL WIRE (MW)	○	CONDUIT (CON)	○	UNDERGROUND CONDUIT (UC)
○	METAL WIRE (MW)	○	CONDUIT (CON)	○	UNDERGROUND CONDUIT (UC)
○	METAL WIRE (MW)	○	CONDUIT (CON)	○	UNDERGROUND CONDUIT (UC)
○	METAL WIRE (MW)	○	CONDUIT (CON)	○	UNDERGROUND CONDUIT (UC)
○	METAL WIRE (MW)	○	CONDUIT (CON)	○	UNDERGROUND CONDUIT (UC)



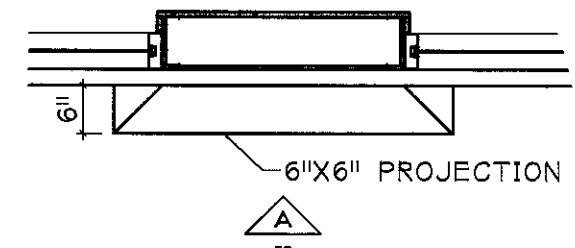
3401-3431 WEST VILLARD AVENUE  
 S03241



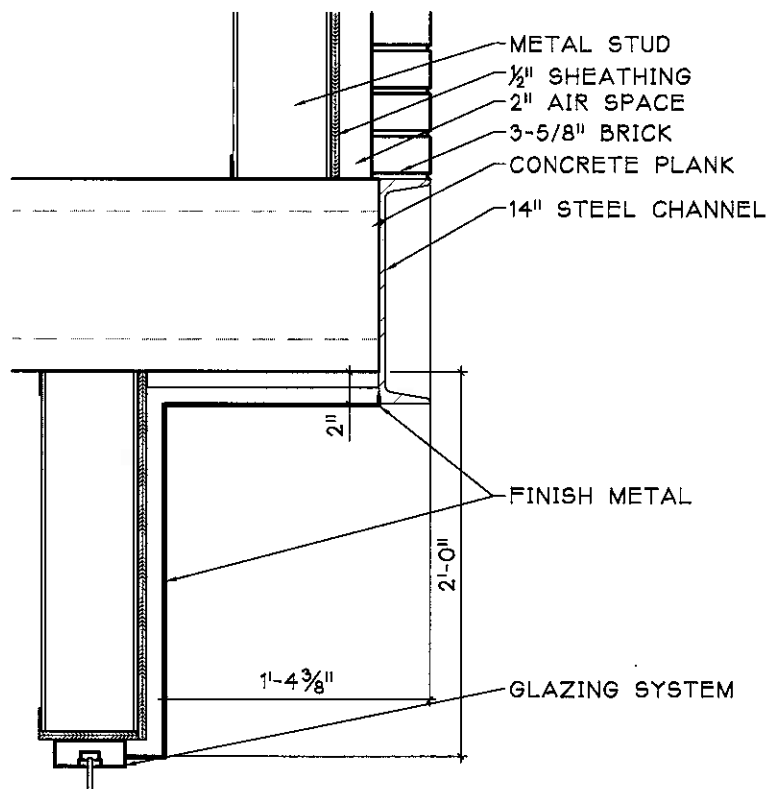
**B** SECTION @ FACADE  
SCALE: 1/2" = 1'-0"



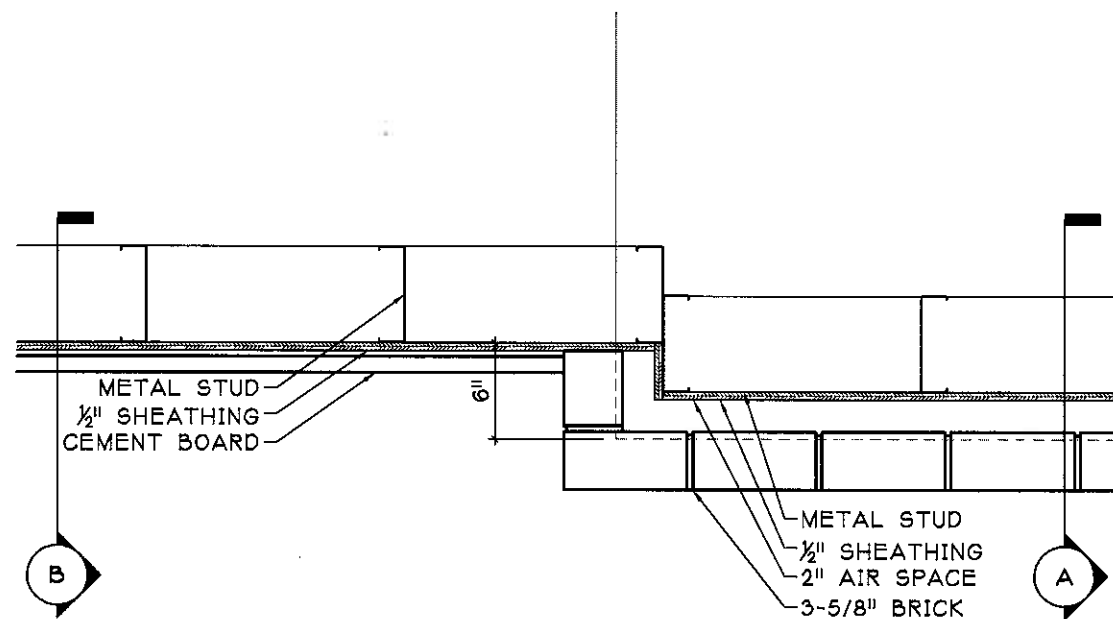
**A** ELEVATION - COLUMN PROJECTION  
SCALE: 1/2" = 1'-0"



**2** COLUMN PROJECTION IN PLAN  
SCALE: 1/2" = 1'-0"



**A** SECTION @ BRICK  
SCALE: 1/2" = 1'-0"



**1** OFFSET IN PLAN  
SCALE: 1/2" = 1'-0"

# VILLARD AVENUE LIBRARY AND HOUSING

EXTERIOR DETAILS

Scale: As Shown

July 10, 2009